

## N.M. OIL CONSERVATION DIVISION

811 S. FIRST STREET

ARTESIA, NM 88210

FORM APPROVED  
OMB No. 1004-0137  
Expires: July 31, 2010Form 3160-5  
(August 2007)UNITED STATES  
DEPARTMENT OF THE INTERIOR  
BUREAU OF LAND MANAGEMENT

## SUNDRY NOTICES AND REPORTS ON WELLS

Do not use this form proposals to drill or to re-enter an  
abandoned well. Use Form 3160-3 (APD) for such proposals.

5. Lease Serial No.  
NMNM-121940

6. If Indian, Allottee or Tribe Name

SUBMIT IN TRIPLICATE - Other instructions on page 2.

## 1. Type of Well

☒ Oil Well ☐ Gas Well ☐ Other

## 2. Name of Operator

Mack Energy Corporation

## 3a. Address

P.O. Box 960 Artesia, NM 88210-0960

## 3b. Phone No. (include area code)

(575) 748-1288

7. If Unit of CA/Agreement, Name and/or No.

8. Well Name and No.  
Churchill Federal #19. API Well No.  
30-005-64233

## 4. Location of Well (Footage, Sec., T,R,M, or Survey Description)

330 FSL &amp; 330 FEL, Sec. 13 T15S R28E

10. Field and Pool or Exploratory Area

Round Tank; San Andres

11. Country or Parish, State

Chaves, NM

## 12. CHECK THE APPROPRIATE BOX(ES) TO INDICATE NATURE OF NOTICE, REPORT OR OTHER DATA

TYPE OF SUBMISSION	TYPE OF ACTION			
<input checked="" type="checkbox"/> Notice of Intent	<input type="checkbox"/> Acidize	<input type="checkbox"/> Deepen	<input type="checkbox"/> Production (Start/Resume)	<input type="checkbox"/> Water Shut-Off
<input type="checkbox"/> Subsequent Report	<input type="checkbox"/> Alter Casing	<input type="checkbox"/> Fracture Treat	<input type="checkbox"/> Reclamation	<input type="checkbox"/> Well Integrity
<input type="checkbox"/> Final Abandonment Notice	<input type="checkbox"/> Casing Repair	<input type="checkbox"/> New Construction	<input type="checkbox"/> Recomplete	<input checked="" type="checkbox"/> Other <u>Move Location</u>
	<input type="checkbox"/> Change Plans	<input type="checkbox"/> Plug and Abandon	<input type="checkbox"/> Temporarily Abandon	
	<input type="checkbox"/> Convert to Injection	<input type="checkbox"/> Plug Back	<input type="checkbox"/> Water Disposal	

13. Describe Proposed or Completed Operation: Clearly state all pertinent details, including estimated starting date of any proposed work and approximate duration thereof. If the proposal is to deepen directionally or recompleat horizontally, give subsurface locations and measured and true vertical depths of all pertinent markers and zones. Attach the Bond under which the work will be performed or provide the Bond No. on file with BLM/BIA. Required subsequent reports must be filed within 30 days following completion of the involved operations. If the operation results in a multiple completion or recompleat in a new interval, a Form 3160-4 must be filed once testing has been completed. Final Abandonment Notices must be filed only after all requirements, including reclamation, have been completed and the operator has determined that the site is ready for final inspection.)

Mack Energy is requesting approved to move the Churchill Federal #1 location 200' east of current location. New footages will be 330 FSL & 330 FEL Sec. 13 T15S R28E. All other Conditions of Approval are applicable.

RD 6/30/15  
Accepted for record  
NMAOCD

NM OIL CONSERVATION  
ARTESIA DISTRICT

JUN 29 2015

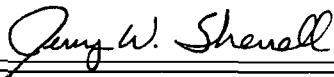
RECEIVED

14. I hereby certify that the foregoing is true and correct. Name (Printed/Typed)

Jerry W. Sherrell

Title Production Clerk

Signature



Date 5/27/15

## THIS SPACE FOR FEDERAL OR STATE OFFICE USE

Approved by

[S] Ruben J. Sanchez

Assistant Field Manager,  
Lands And Minerals

Date

JUN 26 2015

Conditions of approval, if any, are attached. Approval of this notice does not warrant or certify that the applicant holds legal or equitable title to those rights in the subject lease which would entitle the applicant to conduct operations thereon.

Office

Roswell Field

Office

Title 18 U.S.C. Section 1001 and Title 43 U.S.C. Section 1212, make it a crime for my person knowingly and willfully to make to any department or agency of the United States any false, fictitious or fraudulent statements or representations as to any matter within its jurisdiction.

(Instructions on page 2)

District I  
1625 N. French Dr., Hobbs, NM 88240  
Phone: (575) 393-6161 Fax: (575) 393-0720  
District II  
511 S. First St., Artesia, NM 88210  
Phone: (575) 748-1283 Fax: (575) 748-9720  
District III  
1000 Rio Brazos Road, Aztec, NM 87410  
Phone: (505) 334-6178 Fax: (505) 334-6170  
District IV  
1220 S. St. Francis Dr., Santa Fe, NM 87505  
Phone: (505) 476-3460 Fax: (505) 476-3462

State of New Mexico  
Energy, Minerals & Natural Resources Department  
OIL CONSERVATION DIVISION  
1220 South St. Francis Dr.  
Santa Fe, NM 87505

Form C-102  
Revised August 1, 2011  
Submit one copy to appropriate  
District Office

☐ AMENDED REPORT

WELL LOCATION AND ACREAGE DEDICATION PLAT

<sup>1</sup> API Number <b>30-005-64233</b>	<sup>2</sup> Pool Code <b>52770</b>	<sup>3</sup> Pool Name <b>Round Tank; San Andres</b>
<sup>4</sup> Property Code <b>314207</b>	<sup>5</sup> Property Name <b>CHURCHILL FEDERAL</b>	
<sup>7</sup> OGRID No. <b>13837</b>	<sup>8</sup> Operator Name <b>MACK ENERGY CORPORATION</b>	
		<sup>6</sup> Well Number <b>1</b>
		<sup>9</sup> Elevation <b>3737.6</b>

<sup>10</sup> Surface Location

UL or lot no.	Section	Township	Range	Lot Idn	Feet from the	North/South line	Feet from the	East/West line	County
<b>P</b>	<b>13</b>	<b>15 S</b>	<b>28 E</b>		<b>330</b>	<b>SOUTH</b>	<b>330</b>	<b>EAST</b>	<b>CHAVES</b>

<sup>11</sup> Bottom Hole Location If Different From Surface

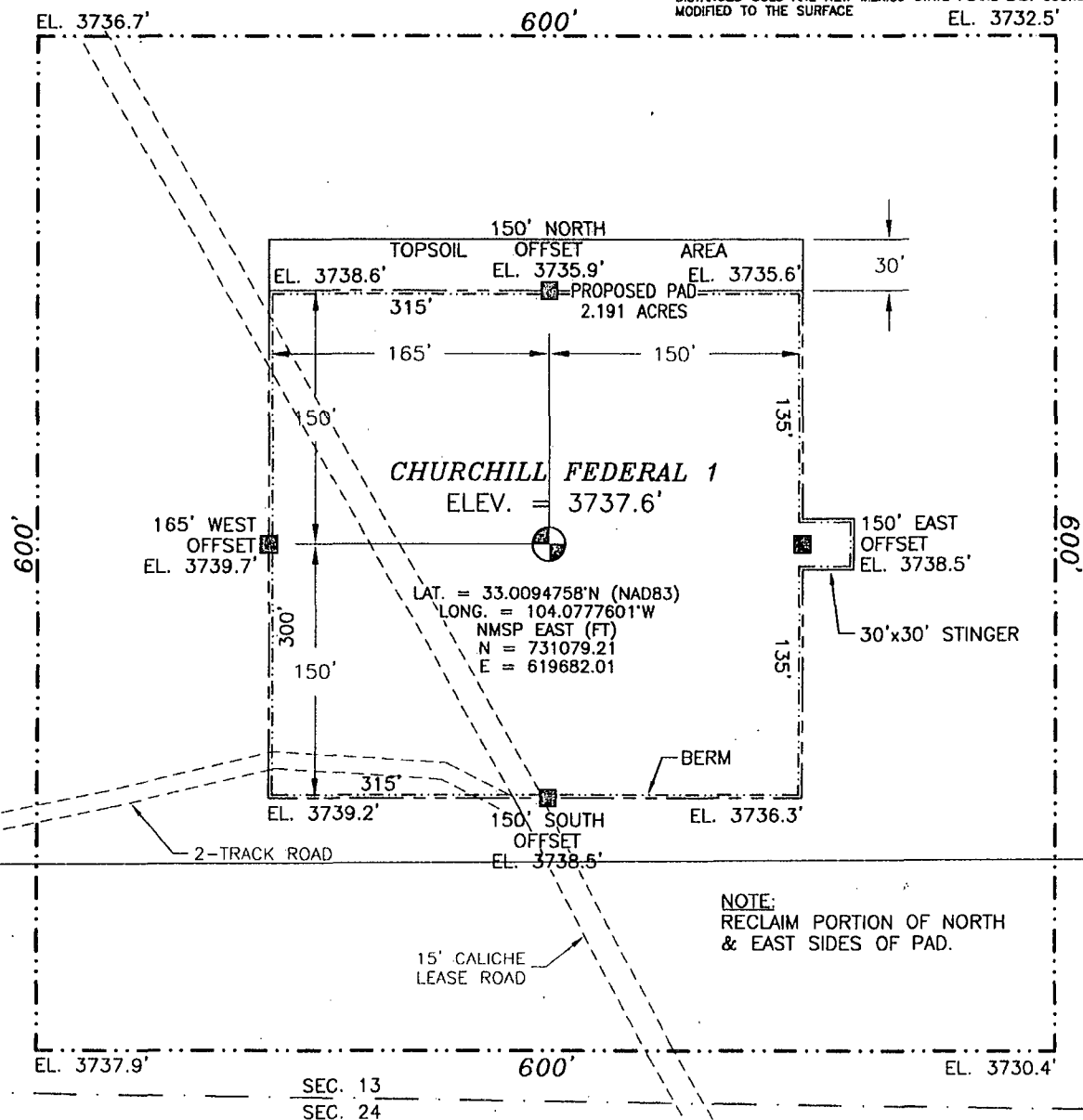
UL or lot no.	Section	Township	Range	Lot Idn	Feet from the	North/South line	Feet from the	East/West line	County
<sup>12</sup> Dedicated Acres <b>40</b>		<sup>13</sup> Joint or Infill		<sup>14</sup> Consolidation Code		<sup>15</sup> Order No.			

No allowable will be assigned to this completion until all interests have been consolidated or a non-standard unit has been approved by the division.

S89°56'48"E 2646.15 FT		S89°58'01"E 2643.96 FT		<b>" OPERATOR CERTIFICATION</b>	
NW CORNER SEC. 13 LAT. = 33.0233346°N LONG. = 104.0940196°W NMSP EAST (FT) N = 736109.70 E = 614686.24		N/4 CORNER SEC. 13 LAT. = 33.0233110°N LONG. = 104.0853884°W NMSP EAST (FT) N = 736107.24 E = 617331.70		NE CORNER SEC. 13 LAT. = 33.0232894°N LONG. = 104.0767643°W NMSP EAST (FT) N = 736105.72 E = 619974.98	
NOTE: LATITUDE AND LONGITUDE COORDINATES ARE SHOWN USING THE NORTH AMERICAN DATUM OF 1983 (NAD83). LISTED NEW MEXICO STATE PLANE EAST COORDINATES ARE GRID (NAD83). BASIS OF BEARING AND DISTANCES USED ARE NEW MEXICO STATE PLANE EAST COORDINATES MODIFIED TO THE SURFACE.				I hereby certify that the information contained herein is true and complete to the best of my knowledge and belief, and that this organization either owns a working interest or undivided mineral interest in the land including the proposed bottom hole location or has a right to drill this well at this location pursuant to a contract with an owner of such a mineral or working interest, or to a voluntary pooling agreement or a compulsory pooling order heretofore entered by the division.  <i>Jerry W. Sharrell</i> 5-28-2015 Signature Date Printed Name E-mail Address	
W/4 CORNER SEC. 13 LAT. = 33.0160829°N LONG. = 104.0939722°W NMSP EAST (FT) N = 733471.34 E = 614706.77				E/4 CORNER SEC. 13 LAT. = 33.0159130°N LONG. = 104.0767347°W NMSP EAST (FT) N = 733421.99 E = 619990.60	
		CHURCHILL FEDERAL 1 ELEV. = 3737.6' LAT. = 33.0094758°N (NAD83) LONG. = 104.0777601°W NMSP EAST (FT) N = 731079.21 E = 619682.01		<b>"SURVEYOR CERTIFICATION</b> I hereby certify that the well location shown on this plat was plotted from field notes of actual surveys made by me or under my supervision, and that the same is true and correct to the best of my belief. JUNE 25, 2014 Date of Survey Signature and Seal of Professional Surveyor Certificate Number: EMMON F. LARAMILLO, PLS 12797 SURVEY NO. 2850	
SW CORNER SEC. 13 LAT. = 33.0087931°N LONG. = 104.0939215°W NMSP EAST (FT) N = 730819.17 E = 614728.35		S/4 CORNER SEC. 13 LAT. = 33.0086741°N LONG. = 104.0852973°W NMSP EAST (FT) N = 730782.00 E = 617372.20		SE CORNER SEC. 13 LAT. = 33.0085533°N LONG. = 104.0768764°W NMSP EAST (FT) N = 730744.38 E = 620015.02	
N89°11'40"W 2644.79 FT		N89°11'04"W 2643.77 FT			

SECTION 13, TOWNSHIP 15 SOUTH, RANGE 28 EAST, N.M.P.M.  
CHAVES COUNTY, STATE OF NEW MEXICO  
**SITE MAP**

NOTE: LATITUDE AND LONGITUDE COORDINATES ARE SHOWN USING THE NORTH AMERICAN DATUM OF 1983 (NAD83). LISTED NEW MEXICO STATE PLANE EAST COORDINATES ARE GRID (NAD83). BASIS OF BEARING AND DISTANCES USED ARE NEW MEXICO STATE PLANE EAST COORDINATES MODIFIED TO THE SURFACE



010 50 100 200

SCALE 1" = 100'

**DIRECTIONS TO LOCATION**

FROM THE INTERSECTION OF STATE HIGHWAY 249 AND CR 30 (JEMINA) GO NORTHWEST ON STATE HIGHWAY 249 FOR APPROX. 2.1 MILES. GO SOUTH ON 20' CALICHE LEASE ROAD FOR APPROX. 4.4 MILES. GO SOUTHEAST APPROX. 0.5 OF A MILE. GO SOUTHWEST APPROX. 1.2 MILES. GO WEST APPROX. 0.4 OF A MILE. GO NORTHWEST APPROX. 1.0 MILE. LOCATION IS APPROX. 100' EAST.

**MACK ENERGY CORPORATION**  
**CHURCHILL FEDERAL 1**  
LOCATED 330 FT. FROM THE SOUTH LINE  
AND 330 FT. FROM THE EAST LINE OF  
SECTION 13, TOWNSHIP 15 SOUTH,  
RANGE 28 EAST, N.M.P.M.  
CHAVES COUNTY, STATE OF NEW MEXICO

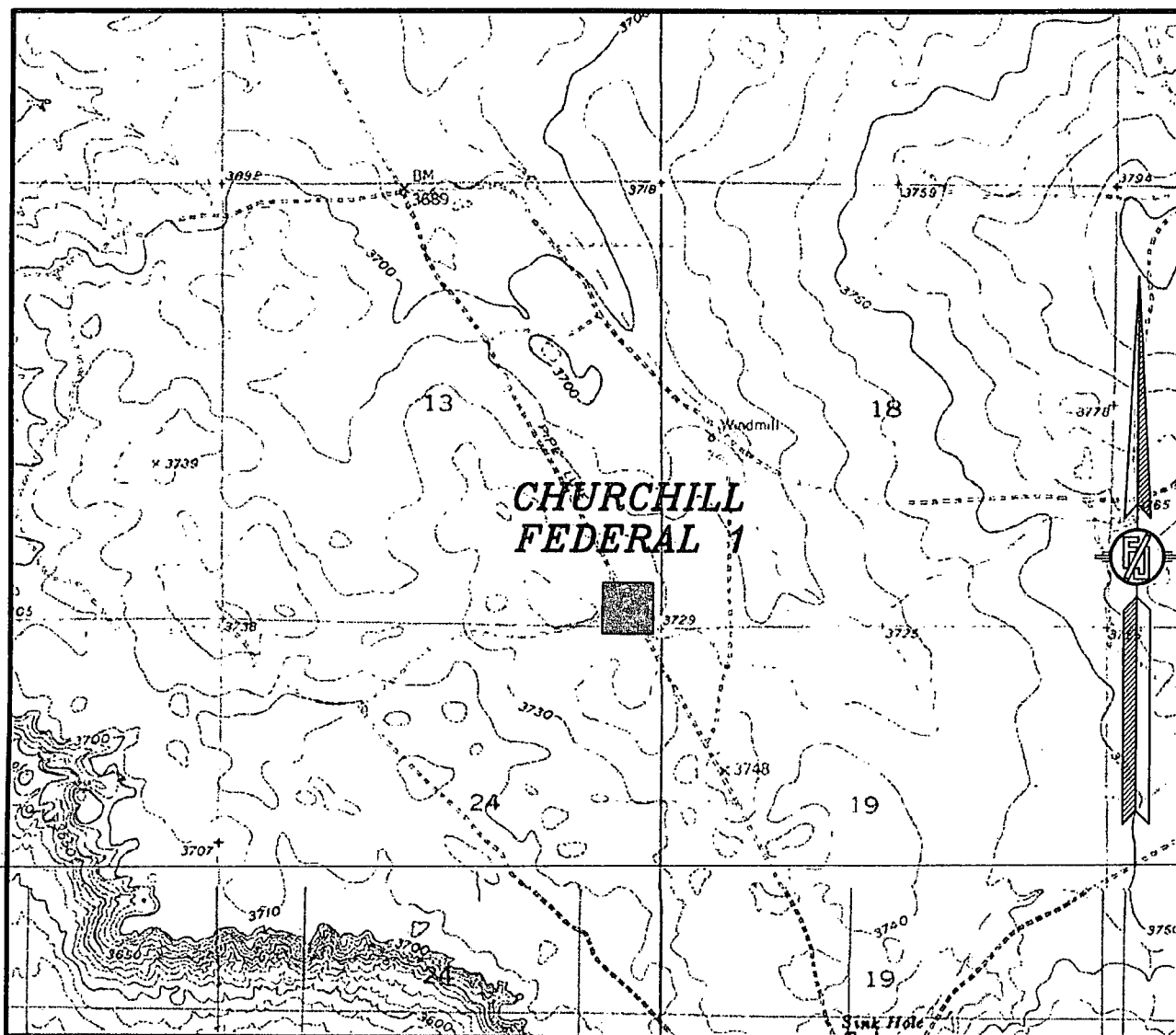
JUNE 25, 2014

SURVEY NO. 2850

MADRON SURVEYING, INC. 301 SOUTH CANAL  
(575) 234-3341

CARLSBAD, NEW MEXICO

SECTION 13, TOWNSHIP 15 SOUTH, RANGE 28 EAST, N.M.P.M.  
CHAVES COUNTY, STATE OF NEW MEXICO  
LOCATION VERIFICATION MAP



USGS QUAD MAP:  
KING CAMP

NOT TO SCALE

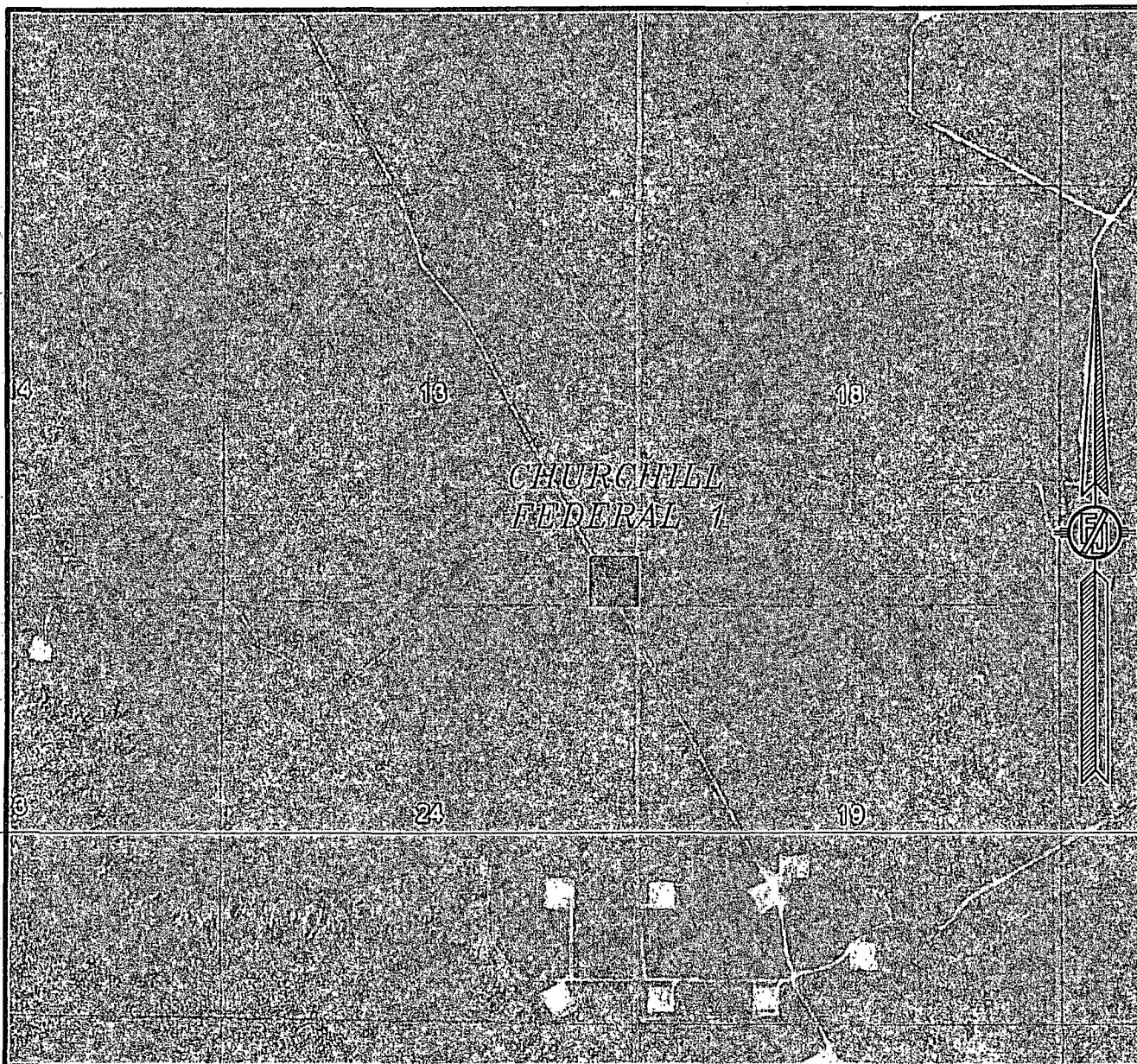
**MACK ENERGY CORPORATION**  
**CHURCHILL FEDERAL 1**  
LOCATED 330 FT. FROM THE SOUTH LINE  
AND 330 FT. FROM THE EAST LINE OF  
SECTION 13, TOWNSHIP 15 SOUTH,  
RANGE 28 EAST, N.M.P.M.  
CHAVES COUNTY, STATE OF NEW MEXICO

JUNE 25, 2014

MADRON SURVEYING, INC. 301 SOUTH CANAL (575) 234-3341 CARLSBAD, NEW MEXICO

SURVEY NO. 2850

SECTION 13, TOWNSHIP 15 SOUTH, RANGE 28 EAST, N.M.P.M.  
CHAVES COUNTY, STATE OF NEW MEXICO  
AERIAL PHOTO



NOT TO SCALE  
AERIAL PHOTO:  
GOOGLE EARTH  
APRIL 2013

**MACK ENERGY CORPORATION**  
**CHURCHILL FEDERAL 1**  
LOCATED 330 FT. FROM THE SOUTH LINE  
AND 330 FT. FROM THE EAST LINE OF  
SECTION 13, TOWNSHIP 15 SOUTH,  
RANGE 28 EAST, N.M.P.M.  
CHAVES COUNTY, STATE OF NEW MEXICO

JUNE 25, 2014

SURVEY NO. 2850

MADRON SURVEYING, INC. 301 SOUTH CANAL (575) 234-3341 CARLSBAD, NEW MEXICO



SECTION 13, TOWNSHIP 15 SOUTH, RANGE 28 EAST, N.M.P.M.  
CHAVES COUNTY, STATE OF NEW MEXICO  
ACCESS AERIAL ROUTE MAP



NOT TO SCALE  
AERIAL PHOTO:  
GOOGLE EARTH  
FEBRUARY 2014

**MACK ENERGY CORPORATION**  
**CHURCHILL FEDERAL 1**  
LOCATED 330 FT. FROM THE SOUTH LINE  
AND 330 FT. FROM THE EAST LINE OF  
SECTION 13, TOWNSHIP 15 SOUTH,  
RANGE 28 EAST, N.M.P.M.  
CHAVES COUNTY, STATE OF NEW MEXICO

JUNE 25, 2014

SURVEY NO. 2850

MADRON SURVEYING, INC. 301 SOUTH CANAL CARLSBAD, NEW MEXICO  
(575) 234-3341