

UNITED STATES
DEPARTMENT OF THE INTERIOR
BUREAU OF LAND MANAGEMENT

N.M. OIL CONSERVATION DIVISION

811 S. FIRST STREET

ARTESIA, NM 88210

FORM APPROVED
OMB No. 1004-0137
Expires: July 31, 2010

SUNDRY NOTICES AND REPORTS ON WELLS

Do not use this form proposals to drill or to re-enter an abandoned well. Use Form 3160-3 (APD) for such proposals.

SUBMIT IN TRIPLICATE - Other instructions on page 2.

1. Type of Well

☒ Oil Well

☐ Gas Well

☐ Other

2. Name of Operator

Mack Energy Corporation

3a. Address

P.O. Box 960 Artesia, NM 88210-0960

3b. Phone No. (include area code)

(575) 748-1288

4. Location of Well (Footage, Sec., T,R,M, or Survey Description)

1650 FSL & 330 FWL, Sec. 21 T15S R29E

5. Lease Serial No.

NMNM-131581

6. If Indian, Allottee or Tribe Name

7. If Unit of CA/Agreement, Name and/or No.

8. Well Name and No.

White Rock Federal #1

9. API Well No.

30-005-64283

10. Field and Pool or Exploratory Area

Round Tank; San Andres

11. Country or Parish, State

Chaves, NM

12. CHECK THE APPROPRIATE BOX(ES) TO INDICATE NATURE OF NOTICE, REPORT OR OTHER DATA

TYPE OF SUBMISSION

TYPE OF ACTION

☒ Notice of Intent

☐ Subsequent Report

☐ Final Abandonment Notice

☐ Acidize

☐ Alter Casing

☐ Casing Repair

☐ Change Plans

☐ Convert to Injection

☐ Deepen

☐ Fracture Treat

☐ New Construction

☐ Plug and Abandon

☐ Plug Back

☐ Production (Start/Resume)

☐ Reclamation

☐ Recomplete

☐ Temporarily Abandon

☐ Water Disposal

☐ Water Shut-Off

☐ Well Integrity

☒ Other Move Location

13. Describe Proposed or Completed Operation: Clearly state all pertinent details, including estimated starting date of any proposed work and approximate duration thereof. If the proposal is to deepen directionally or recompleat horizontally, give subsurface locations and measured and true vertical depths of all pertinent markers and zones. Attach the Bond under which the work will be performed or provide the Bond No. on file with BLM/BIA. Required subsequent reports must be filed within 30 days following completion of the involved operations. If the operation results in a multiple completion or recompleat in a new interval, a Form 3160-4 must be filed once testing has been completed. Final Abandonment Notices must be filed only after all requirements, including reclamation, have been completed and the operator has determined that the site is ready for final inspection.)

Mack Energy is requesting approved to move the White Rock Federal #1 location 26' north and 16' east of current location. New footages will be 1650 FSL & 330 FWL Sec. 21 T15S R29E. All other Conditions of Approval are applicable.

APD 6/30/15
Accepted for record
NMOCD

NM OIL CONSERVATION
ARTESIA DISTRICT

JUN 29 2015

RECEIVED

14. I hereby certify that the foregoing is true and correct. Name (Printed/Typed)

Jerry W. Sherrell

Title Production Clerk

Signature

Jerry W. Sherrell

Date 5/28/15

THIS SPACE FOR FEDERAL OR STATE OFFICE USE

Approved by

\S\ Ruben J. Sanchez

Assistant Field Manager,
Lands And Minerals

Date

JUN 26 2015

Conditions of approval, if any, are attached. Approval of this notice does not warrant or certify that the applicant holds legal or equitable title to those rights in the subject lease which would entitle the applicant to conduct operations thereon.

Office

Roswell Field
Office

Title 18 U.S.C. Section 1001 and Title 43 U.S.C. Section 1212, make it a crime for my person knowingly and willfully to make to any department or agency of the United States any false, fictitious or fraudulent statements or representations as to any matter within its jurisdiction.

(Instructions on page 2)

District I
1625 N. French Dr., Hobbs, NM 88240
Phone: (575) 393-6101 Fax: (575) 393-0720
District II
311 S. First St., Artesia, NM 88210
Phone: (575) 745-1253 Fax: (575) 748-0720
District III
1000 Rio Brazos Road, Aztec, NM 87410
Phone: (505) 234-6178 Fax: (505) 234-6170
District IV
1220 S. St. Francis Dr., Santa Fe, NM 87505
Phone: (505) 476-3460 Fax: (505) 476-3462

State of New Mexico
Energy, Minerals & Natural Resources Department
OIL CONSERVATION DIVISION
1220 South St. Francis Dr.
Santa Fe, NM 87505

Form C-102
Revised August 1, 2011
Submit one copy to appropriate
District Office

☐ AMENDED REPORT

WELL LOCATION AND ACREAGE DEDICATION PLAT

| | | | | | |
|--|--|--|--|---|---|
| ¹ API Number 30-005-64283 | | ² Pool Code 52770 | | ³ Pool Name Round Tank; San Andres | |
| ⁴ Property Code 314853 | | ⁵ Property Name WHITE ROCK FEDERAL | | | ⁶ Well Number 1 |
| ⁷ OGRID No. 13837 | | ⁸ Operator Name MACK ENERGY CORPORATION | | | ⁹ Elevation 3793.9 |

¹⁰ Surface Location

| UL or lot no. | Section | Township | Range | Lot Idn | Feet from the | North/South line | Feet from the | East/West line | County |
|---------------|-----------|-------------|-------------|---------|---------------|------------------|---------------|----------------|---------------|
| L | 21 | 15 S | 29 E | | 1650 | SOUTH | 330 | WEST | CHAVES |

¹¹ Bottom Hole Location If Different From Surface

| UL or lot no. | Section | Township | Range | Lot Idn | Feet from the | North/South line | Feet from the | East/West line | County |
|---------------|---------|----------|-------|---------|---------------|------------------|---------------|----------------|--------|
| | | | | | | | | | |

| | | | |
|--|-------------------------------|----------------------------------|-------------------------|
| ¹² Dedicated Acres 40 | ¹³ Joint or Infill | ¹⁴ Consolidation Code | ¹⁵ Order No. |
|--|-------------------------------|----------------------------------|-------------------------|

No allowable will be assigned to this completion until all interests have been consolidated or a non-standard unit has been approved by the division.

| | | | | | | | | |
|---|--|--|---|--|--|--|--|--|
| <p>N89°55'52"E 2615.72 FT</p> <p>NW CORNER SEC. 21 LAT. = 33.0086670°N LONG. = 104.0420158°W NMSP EAST (FT) N = 730813.44 E = 630640.06</p> | | | <p>N89°56'16"E 2615.03 FT</p> <p>N/4 CORNER SEC. 21 LAT. = 33.0086555°N LONG. = 104.0334852°W NMSP EAST (FT) N = 730816.58 E = 633255.11</p> | | | <p>NE CORNER SEC. 21 LAT. = 33.0086425°N LONG. = 104.0249569°W NMSP EAST (FT) N = 730819.43 E = 635869.46</p> | | |
| <p>W/4 CORNER SEC. 21 LAT. = 33.0014268°N LONG. = 104.0422246°W NMSP EAST (FT) N = 728179.05 E = 630583.33</p> | | | <p>NOTE: LATITUDE AND LONGITUDE COORDINATES ARE SHOWN USING THE NORTH AMERICAN DATUM OF 1983 (NAD83). LISTED NEW MEXICO STATE PLANE EAST COORDINATES ARE GRID (NAD83). BASIS OF BEARING AND DISTANCES USED ARE NEW MEXICO STATE PLANE EAST COORDINATES MODIFIED TO THE SURFACE.</p> | | | <p>E/4 CORNER SEC. 21 LAT. = 33.0012599°N LONG. = 104.0247523°W NMSP EAST (FT) N = 728133.60 E = 635940.04</p> | | |
| <p>W/4 CORNER SEC. 21 LAT. = 32.9941741°N LONG. = 104.0419921°W NMSP EAST (FT) N = 725540.51 E = 630661.92</p> | | | <p>WHITE ROCK FEDERAL #1 ELEV. = 3793.9 LAT. = 32.9987102°N (NAD83) LONG. = 104.0410611°W NMSP EAST (FT) N = 727191.67 E = 630942.78</p> | | | <p>SE CORNER SEC. 21 LAT. = 32.9939935°N LONG. = 104.0247493°W NMSP EAST (FT) N = 725489.88 E = 635948.72</p> | | |
| <p>S89°41'35"W 2638.68 FT</p> | | | <p>N88°35'59"W 2650.32 FT</p> | | | <p>SURFACE LOCATION 330'</p> | | |

¹⁷ OPERATOR CERTIFICATION
I hereby certify that the information contained herein is true and complete to the best of my knowledge and belief, and that this organization either owns a working interest or undivided mineral interest in the land including the proposed bottom hole location or has a right to drill this well at this location pursuant to a contract with an owner of such a mineral or working interest, or to a voluntary pooling agreement or a compulsory pooling order heretofore entered by the division.

Jerry W. Sherrell 5-28-2015
Signature Date

Jerry W. Sherrell
Printed Name

jerryse@mec.com
E-mail Address

¹⁸ SURVEYOR CERTIFICATION
I hereby certify that the well location shown on this plat was plotted from field notes of actual surveys made by me or under my supervision, and that the same is true and correct to the best of my belief.

APRIL 22, 2014
Date of Survey

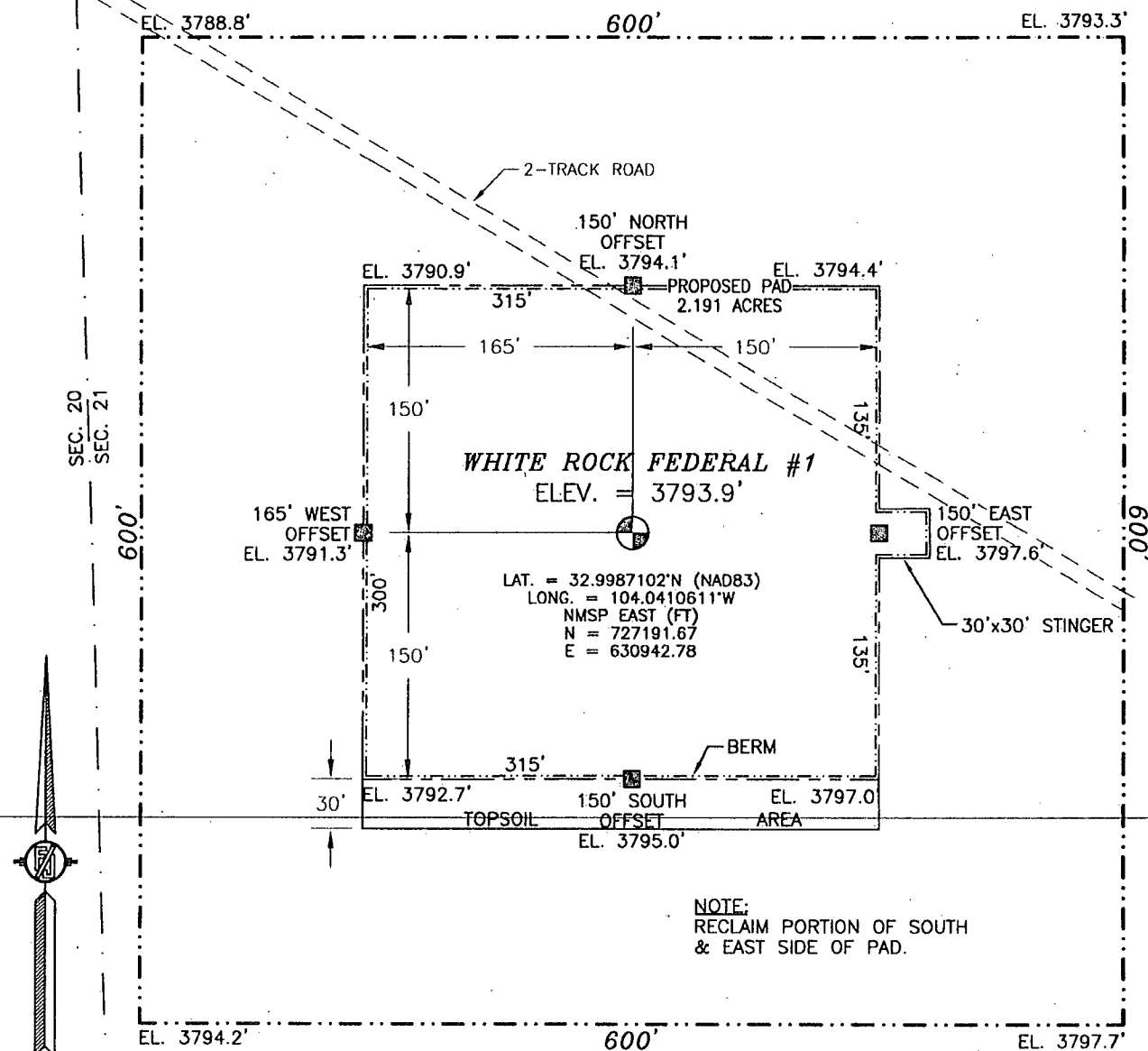
[Signature]
Signature and Seal of Professional Surveyor

Certificate Number 1748001 JARAMILLO, PLS 12797
SURVEY NO. 2806

SECTION 21, TOWNSHIP 15 SOUTH, RANGE 29 EAST, N.M.P.M.
CHAVES COUNTY, STATE OF NEW MEXICO

SITE MAP

NOTE: LATITUDE AND LONGITUDE COORDINATES ARE SHOWN USING THE NORTH AMERICAN DATUM OF 1983 (NAD83). LISTED NEW MEXICO STATE PLANE EAST COORDINATES ARE GRID (NAD83). BASIS OF BEARING AND DISTANCES USED ARE NEW MEXICO STATE PLANE EAST COORDINATES MODIFIED TO THE SURFACE



NOTE:
RECLAIM PORTION OF SOUTH
& EAST SIDE OF PAD.

010 50 100 200

SCALE 1" = 100'

DIRECTIONS TO LOCATION

FROM THE INTERSECTION OF STATE HIGHWAY 249 AND CR 30 (JEMINA) GO NORTHWEST ON STATE HIGHWAY 249 FOR APPROX. 2.1 MILES. GO SOUTH ON CALICHE LEASE ROAD APPROX. 4.4 MILES. GO SOUTHEAST APPROX. 0.5 MILES. CONTINUE SOUTHEAST ON 2-TRACK ROAD APPROX. 0.7 OF A MILE TO LOCATION 140' SOUTH.

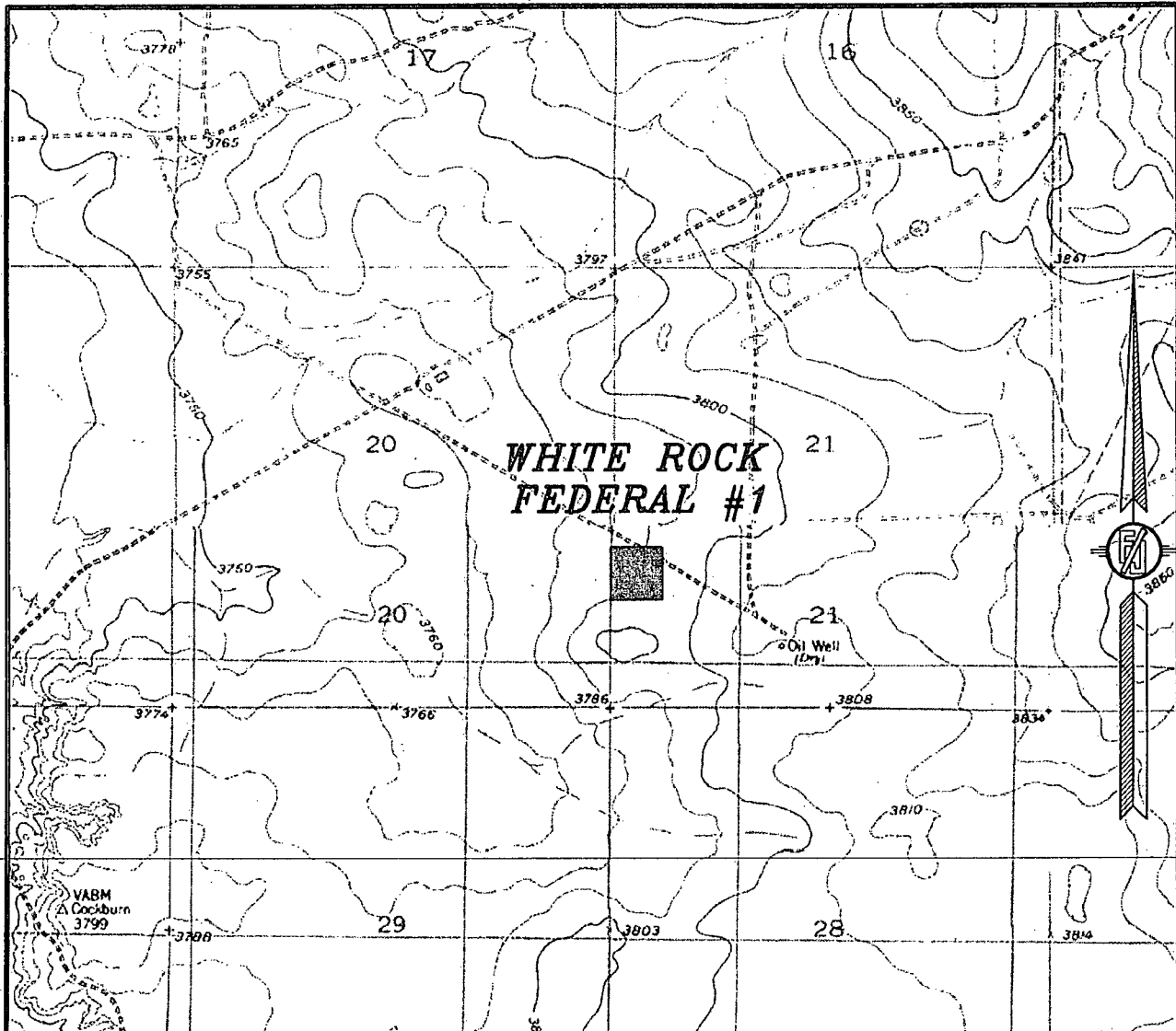
MACK ENERGY CORPORATION
WHITE ROCK FEDERAL #1
LOCATED 1650 FT. FROM THE SOUTH LINE
AND 330 FT. FROM THE WEST LINE OF
SECTION 21, TOWNSHIP 15 SOUTH,
RANGE 29 EAST, N.M.P.M.
CHAVES COUNTY, STATE OF NEW MEXICO

APRIL 22, 2014

SURVEY NO. 2806

MADRON SURVEYING, INC. 301 SOUTH CANAL CARLSBAD, NEW MEXICO
(575) 234-3341

SECTION 21, TOWNSHIP 15 SOUTH, RANGE 29 EAST, N.M.P.M.
CHAVES COUNTY, STATE OF NEW MEXICO
LOCATION VERIFICATION MAP



USGS QUAD MAP:
KING CAMP & BASIN
WELL

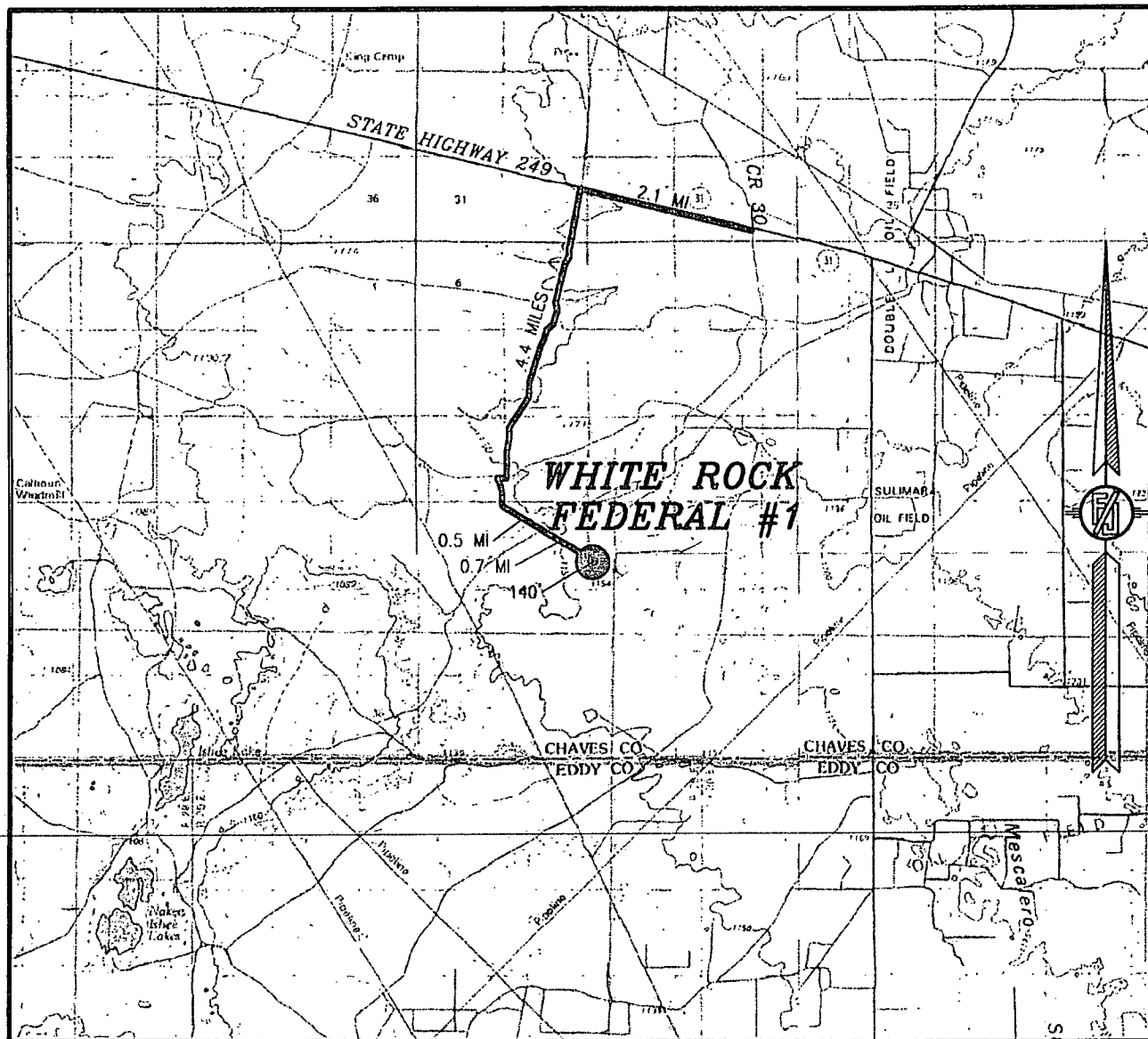
NOT TO SCALE

MACK ENERGY CORPORATION
WHITE ROCK FEDERAL #1
LOCATED 1650 FT. FROM THE SOUTH LINE
AND 330 FT. FROM THE WEST LINE OF
SECTION 21, TOWNSHIP 15 SOUTH,
RANGE 29 EAST, N.M.P.M.
CHAVES COUNTY, STATE OF NEW MEXICO

APRIL 22, 2014

MADRON SURVEYING, INC. 301 SOUTH CANAL (575) 234-3341 CARLSBAD, NEW MEXICO SURVEY NO. 2806

SECTION 21, TOWNSHIP 15 SOUTH, RANGE 29 EAST, N.M.P.M.
CHAVES COUNTY, STATE OF NEW MEXICO
VICINITY MAP



DISTANCES IN MILES

NOT TO SCALE

MACK ENERGY CORPORATION
WHITE ROCK FEDERAL #1
LOCATED 1650 FT. FROM THE SOUTH LINE
AND 330 FT. FROM THE WEST LINE OF
SECTION 21, TOWNSHIP 15 SOUTH,
RANGE 29 EAST, N.M.P.M.
CHAVES COUNTY, STATE OF NEW MEXICO

DIRECTIONS TO LOCATION

FROM THE INTERSECTION OF STATE HIGHWAY 249 AND CR 30 (JEMINA) GO NORTHWEST ON STATE HIGHWAY 249 FOR APPROX. 2.1 MILES. GO SOUTH ON CALICHE LEASE ROAD APPROX. 4.4 MILES. GO SOUTHEAST APPROX. 0.5 MILES. CONTINUE SOUTHEAST ON 2-TRACK ROAD APPROX. 0.7 OF A MILE TO LOCATION 140' SOUTH.

APRIL 22, 2014

SURVEY NO. 2806

MADRON SURVEYING, INC. 301 SOUTH CANAL (575) 234-3341 CARLSBAD, NEW MEXICO

SECTION 21, TOWNSHIP 15 SOUTH, RANGE 29 EAST, N.M.P.M.
CHAVES COUNTY, STATE OF NEW MEXICO
AERIAL PHOTO



NOT TO SCALE
AERIAL PHOTO:
GOOGLE EARTH
JULY 2011

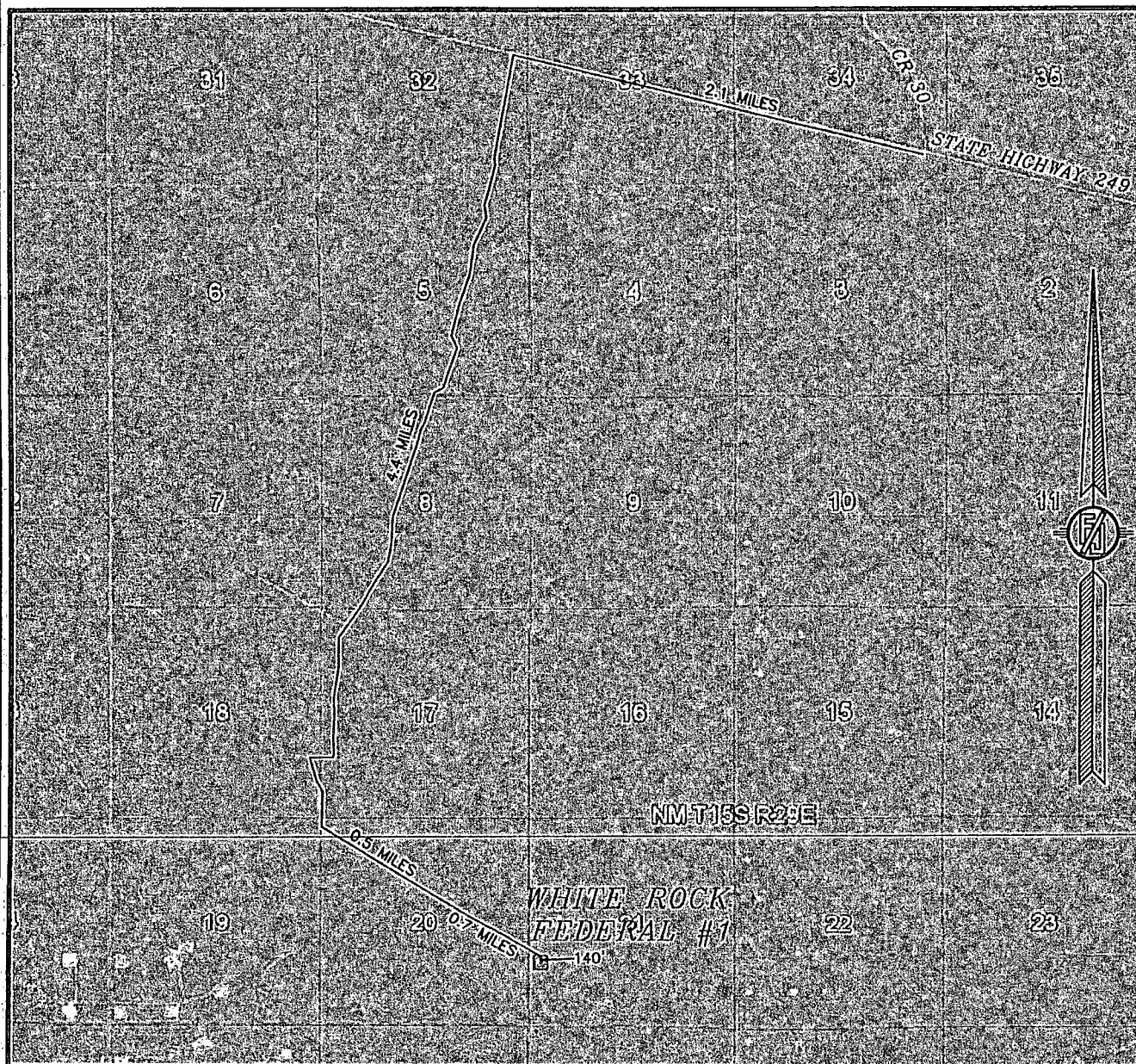
MACK ENERGY CORPORATION
WHITE ROCK FEDERAL #1
LOCATED 1650 FT. FROM THE SOUTH LINE
AND 330 FT. FROM THE WEST LINE OF
SECTION 21, TOWNSHIP 15 SOUTH,
RANGE 29 EAST, N.M.P.M.
CHAVES COUNTY, STATE OF NEW MEXICO

APRIL 22, 2014

SURVEY NO. 2806

MADRON SURVEYING, INC. 301 SOUTH CANAL CARLSBAD, NEW MEXICO
(575) 234-3341

SECTION 21, TOWNSHIP 15 SOUTH, RANGE 29 EAST, N.M.P.M.
CHAVES COUNTY, STATE OF NEW MEXICO
ACCESS AERIAL ROUTE MAP



NOT TO SCALE
AERIAL PHOTO:
GOOGLE EARTH
JULY 2011

MACK ENERGY CORPORATION
WHITE ROCK FEDERAL #1
LOCATED 1650 FT. FROM THE SOUTH LINE
AND 330 FT. FROM THE WEST LINE OF
SECTION 21, TOWNSHIP 15 SOUTH,
RANGE 29 EAST, N.M.P.M.
CHAVES COUNTY, STATE OF NEW MEXICO

APRIL 22, 2014

SURVEY NO. 2806

MADRON SURVEYING, INC. 301 SOUTH CANAL (575) 234-3341 CARLSBAD, NEW MEXICO