

UNITED STATES
DEPARTMENT OF THE INTERIOR
BUREAU OF LAND MANAGEMENT

NM OIL CONSERVATION

ARTESIA DISTRICT
Artesia

JUL 21 2015

FORM APPROVED
OMB NO. 1004-0135
Expires: July 31, 2010**SUNDRY NOTICES AND REPORTS ON WELLS**
*Do not use this form for proposals to drill or to re-enter an abandoned well. Use form 3160-3 (APD) for such proposals.***SUBMIT IN TRIPLICATE - Other instructions on reverse side.**

1. Type of Well <input type="checkbox"/> Oil Well <input checked="" type="checkbox"/> Gas Well <input type="checkbox"/> Other		5. Lease Serial No. NMLC061862
2. Name of Operator DEVON ENERGY PRODUCTION CO EMail: REBECCA.DEAL@DVN.COM		6. If Indian, Allottee or Tribe Name
3a. Address 333 WEST SHERIDAN AVE OKLAHOMA CITY, OK 73102	3b. Phone No. (include area code) Ph: 405-228-8429	7. If Unit or CA/Agreement, Name and/or No. 891005247E
4. Location of Well (Footage, Sec., T., R., M., or Survey Description) Sec 12 T25S R31E NWSE 2600FSL 1500FEL		8. Well Name and No. COTTON DRAW UNIT 86
		9. API Well No. 30-015-29850-00-S1
		10. Field and Pool, or Exploratory PADUCA ; DEVONIAN, NW 96615
		11. County or Parish, and State EDDY COUNTY, NM

12. CHECK APPROPRIATE BOX(ES) TO INDICATE NATURE OF NOTICE, REPORT, OR OTHER DATA

TYPE OF SUBMISSION	TYPE OF ACTION			
<input type="checkbox"/> Notice of Intent	<input type="checkbox"/> Acidize	<input type="checkbox"/> Deepen	<input type="checkbox"/> Production (Start/Resume)	<input type="checkbox"/> Water Shut-Off
<input checked="" type="checkbox"/> Subsequent Report	<input type="checkbox"/> Alter Casing	<input type="checkbox"/> Fracture Treat	<input type="checkbox"/> Reclamation	<input type="checkbox"/> Well Integrity
<input type="checkbox"/> Final Abandonment Notice	<input type="checkbox"/> Casing Repair	<input type="checkbox"/> New Construction	<input type="checkbox"/> Recomplete	<input type="checkbox"/> Other
	<input type="checkbox"/> Change Plans	<input type="checkbox"/> Plug and Abandon	<input checked="" type="checkbox"/> Temporarily Abandon	
	<input type="checkbox"/> Convert to Injection	<input type="checkbox"/> Plug Back	<input type="checkbox"/> Water Disposal	

13. Describe Proposed or Completed Operation (clearly state all pertinent details, including estimated starting date of any proposed work and approximate duration thereof. If the proposal is to deepen directionally or recompleat horizontally, give subsurface locations and measured and true vertical depths of all pertinent markers and zones. Attach the Bond under which the work will be performed or provide the Bond No. on file with BLM/BIA. Required subsequent reports shall be filed within 30 days following completion of the involved operations. If the operation results in a multiple completion or recompleat in a new interval, a Form 3160-4 shall be filed once testing has been completed. Final Abandonment Notices shall be filed only after all requirements, including reclamation, have been completed, and the operator has determined that the site is ready for final inspection.)

DEVON ENERGY RESPECTFULLY REQUESTS TA STATUS WITH ATTACHED PROCEDURES COMPLETED FROM 4/14/2015 - 6/30/2015.

ATTACHMENTS: PROCEDURES
MIT 500 PSI
MIT 1000 PSI
CURRENT WELLBORE SCHEMATIC

RD 7/21/2015
RECEIVED



Approved For TA until 3/18/2016

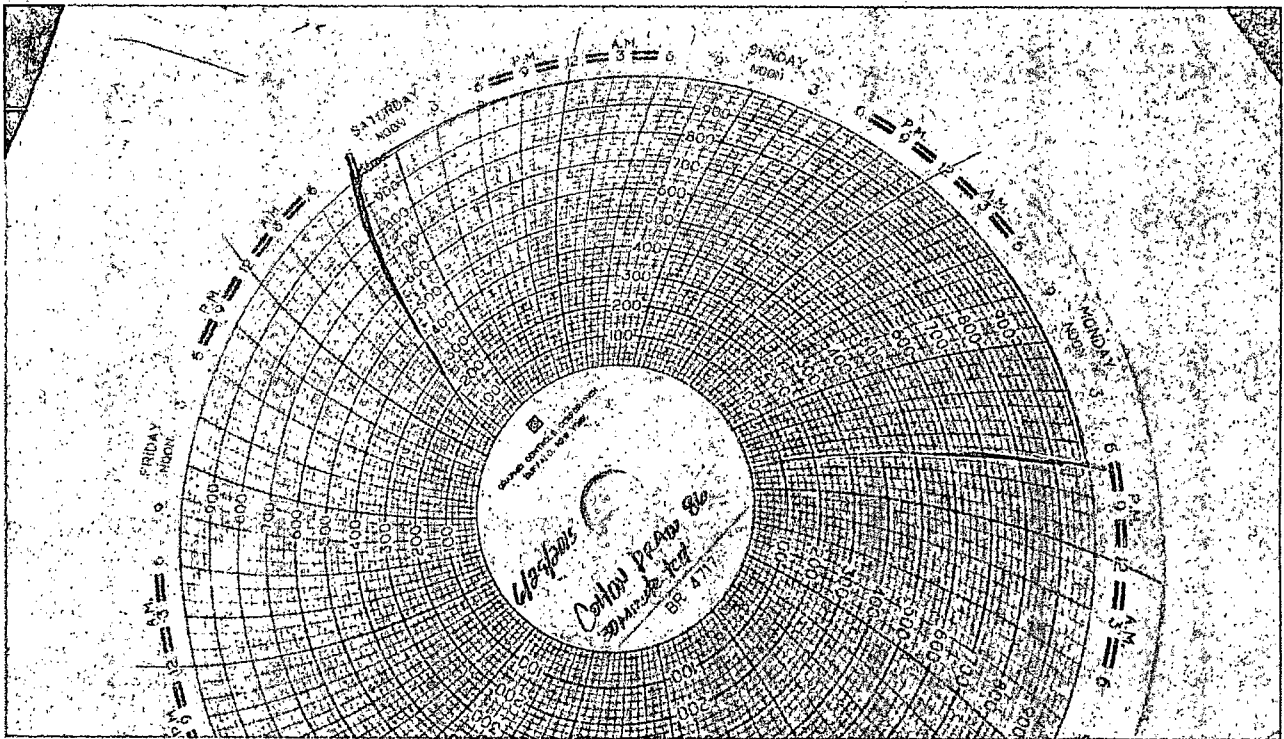
14. I hereby certify that the foregoing is true and correct. Electronic Submission #308189 verified by the BLM Well Information System For DEVON ENERGY PRODUCTION CO LP, sent to the Hobbs Committed to AFMSS for processing by ED FERNANDEZ on 07/09/2015 (15JAM0091SE)	
Name (Printed/Typed) REBECCA DEAL	Title REGULATORY COMPLIANCE PROF
Signature (Electronic Submission)	Date 07/07/2015

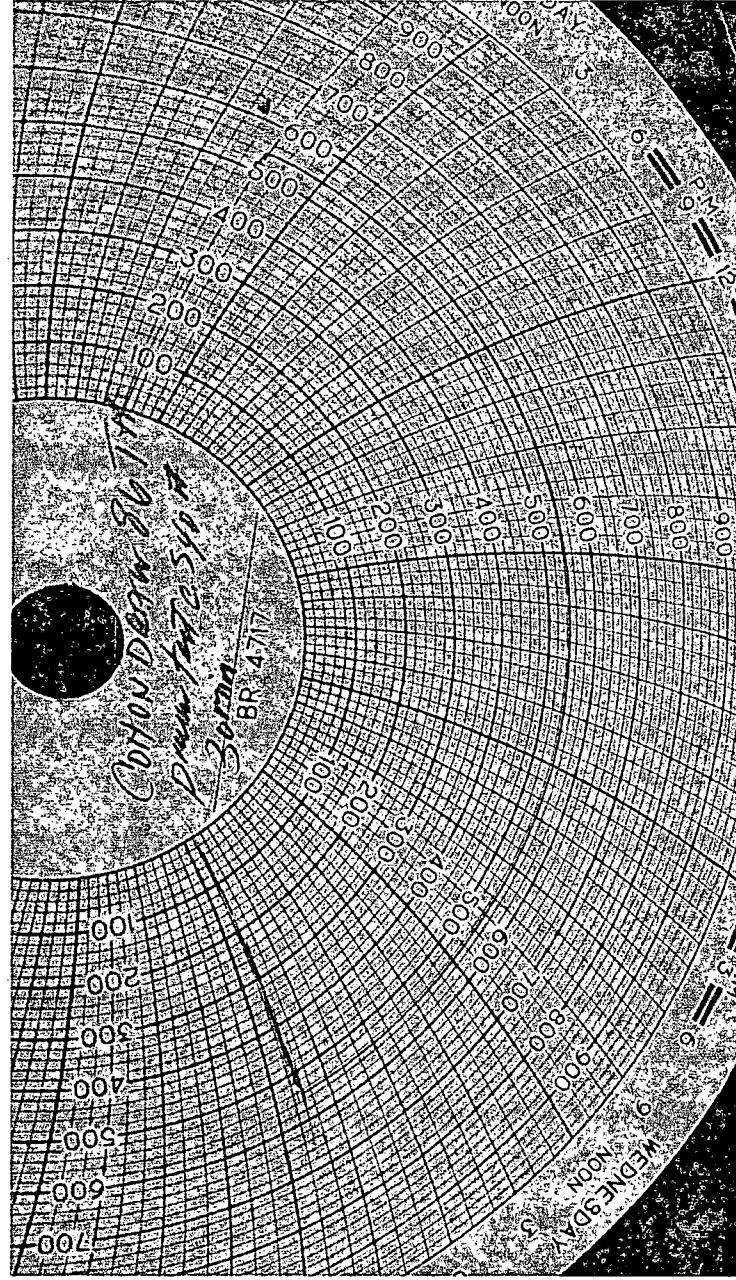
THIS SPACE FOR FEDERAL OR STATE OFFICE USE

Approved By ACCEPTED	EDWARD FERNANDEZ Title PETROLEUM ENGINEER	Date 07/09/2015
Conditions of approval, if any, are attached. Approval of this notice does not warrant or certify that the applicant holds legal or equitable title to those rights in the subject lease which would entitle the applicant to conduct operations thereon.		Office Hobbs

Title 18 U.S.C. Section 1001 and Title 43 U.S.C. Section 1212, make it a crime for any person knowingly and willfully to make to any department or agency of the United States any false, fictitious or fraudulent statements or representations as to any matter within its jurisdiction.

** BLM REVISED ** BLM REVISED ** BLM REVISED ** BLM REVISED ** BLM REVISED **





COTTON DRAW UNIT #86 PROCEDURES
API 30-015-29850
12-25S-31E

4/14: Mobilize equipment, notify BLM,
4/15: MIRU safety equipment – due to H2S
4/16: Test Wellhead and tree
4/17: MIRU additional equipment
4/18: Wireline operations – attempt to set plug in XN nipple, prong shattered. And shows scale on tools.
4/20: Wireline operations – successful set plug in XN nipple. Bled pressure from 5500 psi to 1500 psi
4/21: Wireline operations – attempt to set 2nd plug in X nipple this time. Shows scale-like material on tools. Issues with wellhead and leak.
4/22: Wireline operations – set 2nd plug in X nipple. Attempt to bleed down pressure, unsuccessful. Likely due to corrosion around SS nipples.
4/23: Wireline operations – attempt to dump bail cement on top of X nipple and plug. Issues with WL company.
4/24: WO new wireline company
4/25: E-line operations: dump bail 12' of cement on top of X nipple and plug. Set additional plug in tubing at 16338'.
4/26: WOC
4/27: WOC
4/28: Bleed pressure off well. Plugs holding and 0 psi on tubing. Wireline operations: attempt to cut tubing. Issues with crimp in wireline.
4/29: WO new WL spool.
4/30: Wireline operations: attempt to cut tubing. RIH to 15650' and became stuck. Jarred and attempted to get unstuck. Exhausted all options. Attempted to cut tubing. Unsuccessful and appeared to have pulled out of the rope socket. Left tools downhole: 3 tungsten weight bars, CCL tool, and tubing cutter. 22.6'.
5/1: Remove wellhead and install BOPE. Issues with corrosion.
5/4: Continue removing wellhead and install BOPE. Test. Attempt to pull on tubing to determine if it was cut. Pulled max for rig and showed zero signs of tubing being cut.
5/5: WO equipment
5/6: Wireline operations – attempt to freepoint. Issues with tagging high and tools getting sticky. Stacked out at XO from 3.5" to 2.875" tubing. Ran impressions block. Shows fishing neck at 12924'. It seems we were able to pull the cutter and tools into the 3.5" tubing before losing them and they are stuck at the XO.
5/7: wireline operations – attempt to fish cutter and tools. Could not latch on and fish went downhole. POOH with fishing tools – found scale. TIH with overshot again. Tagged at 15636' repeatedly.
5/8: Wireline operations – continued fishing. Run impression block. Suspect iron sulfide scale on top of fish and impression block showed nothing capable of fishing. At this point I contacted you all at the BLM and we discussed our options. Decided to cut tubing and attempt to wash over tubing down to packer.
5/11: WO equipment
5/12: Wireline operations: Cut tubing at 15600'. Circulate well with treated KCl.
5/13: POOH with tubing.
5/14 Finish POOH with tubing.
5/15: Pick up cutter and washpipe and begin TIH.
5/18: Losing weight as we run in the hole. Rig up swivel to get down. Tag fish @ 15567'. Could not RIH, rotate, or POOH. Attempted to pump down tubing and casing. Pressured up. Attempt to jar curter loose.

5/19: During jarring crimped a joint of tubing near BOP. Remediate. Cut joint. Overshot tubing at surface. Set off the jars and came free. Knives broken, Cutter was intact, but severely bent.

5/20: POOH with tubing and cutter.

5/21: RIH w/shoe to clean top of fish.

5/22: Dressed top of fish with 4-5/8" shoe. Milled 3".

5/26: POOH. WO rig issues.

5/27: Pick up cutter and washpipe and begin TIH. Finished to top of fish.

5/28: Tagged fish and attempt to washover. Made no progress. Stuck workstring and attempted to jar free. Jarred free.

5/29: Finished out of hole with tools.

5/30 – 5/31: Shut down discussing engineering options. Contact BLM and receive confirmation to attempt to overshot tubing fish and attempt to run coil tubing inside tubing.

6/1: WO tools. RIH with 2-7/8" overshot.

6/2: Finish in hole. Tagged top of fish. Unable to latch up. POOH. Saw uneven wear on bottom of overshot.

6/3: Finish POOH. RIH w/shoe in attempt to centralize tubing fish.

6/4: Continue in hole. Rig issues shut down.

6/5: RIH and attempt to centralize pipe with washpipe but no cutter.

6/8: POOH with tubing and tools. Rig maintenance.

6/9: POOH with tubing. RIH with overshot.

6/10: Latch onto tubing with overshot.

6/11: MIRU Coil Tubing Unit.

6/12: Attempt to fish wireline tools – no recovery. Tagged at 15,649'. Pump pressure increasing as push on fish. Could not move fish down. POOH. Did not recover. (Started working 24 hours a day.)

6/13: Attempt to run alligator grapple (in case some wireline is downhole). RIH and tag. Set down and could not move. No differential pressure. POOH.

6/14: Modify BHA and attempt to go back with washover shoe for wireline tool recovery. Created a different type of mill in a machine/fishing tool shop. WO fabrication. TIH and workover fish. Stalled each time at 15625'. Pumped sweeps and made another attempt. POOH.

6/15: POOH with washover tools. RIH with overshot – no recovery. POOH. Attempt smaller grapple – no recovery. POOH.

6/16: TIH with tapered 5 blade junk mill. Attempt to mill up issue at 15632'. Had torque issues and motor stalls. Very high differential pressure. Returns included iron sulfide scale, plastic type material, and metal cuttings. Pump sweep and POOH with CT. RDMOL.

6/17: Shut down waiting on orders. Received variance from BLM on COAs.

6/22: MIRU Pulling unit.

6/23: Pull overshot off fish. Begin POOH with tubing.

6/24: Finish POOH.

6/25: Tag top of fish. Set CIBP @ 15570'. (WL believed they were at 15580' but tagged 10' high)

6/26: TIH with tubing for cement operations.

6/27: Tag CIBP @ 15570'. Pump 40 sx Class H cmt. Reverse circulate and shut well in for 48 hours.

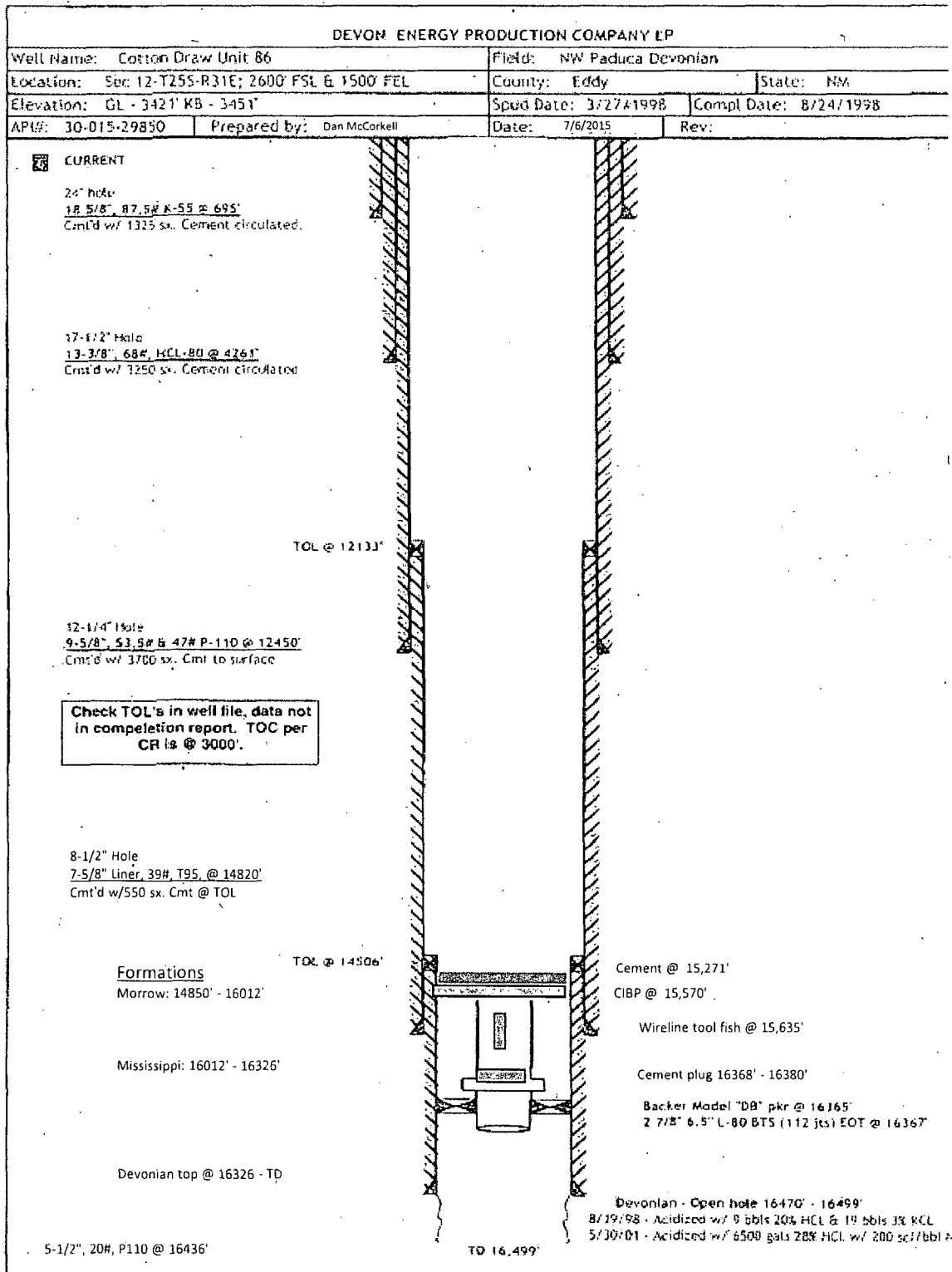
6/29: Tag TOC @ 15271'. Pressure test to 1000 psi on chart. Line was above acceptable range on chart. Also pressure tested to 540 psi. Tested good. Included chart.

6/30: POOH and shut-down. RDMOL.

JUL 21 2015

CDU 86: Current Schematic

RECEIVED



CDU 86: Current Schematic

