

Submit 1 Copy to Appropriate District Office  
District I - (575) 393-6161  
1625 N. French Dr., Hobbs, NM 88240  
District II - (575) 748-1283  
811 S. First St., Artesia, NM 88210  
District III - (505) 334-6178  
1000 Rio Brazos Rd., Aztec, NM 87410  
District IV - (505) 476-3460  
1220 S. St. Francis Dr., Santa Fe, NM 87505

State of New Mexico  
Energy, Minerals and Natural Resources

Form C-103  
October 13, 2009

OIL CONSERVATION DIVISION  
1220 South St. Francis Dr.  
Santa Fe, NM 87505

WELL API NO. <b>30-015-23729</b>
5. Indicate Type of Lease STATE <input checked="" type="checkbox"/> FEE <input checked="" type="checkbox"/>
6. State Oil & Gas Lease No.
7. Lease Name or Unit Agreement Name <b>Loving 1 State</b>
8. Well Number 1
9. OGRID Number
10. Pool name or Wildcat <b>Black River East (Wolfcamp)</b>

SUNDRY NOTICES AND REPORTS ON WELLS (DO NOT USE THIS FORM FOR PROPOSALS TO DRILL OR TO DEEPEN OR PLUG BACK TO A DIFFERENT RESERVOIR. USE "APPLICATION FOR PERMIT" (FORM C-101) FOR SUCH PROPOSALS.)	
1. Type of Well: Oil Well <input checked="" type="checkbox"/> Gas Well <input type="checkbox"/> Other <input type="checkbox"/>	
2. Name of Operator <b>COG Operating LLC</b>	
3. Address of Operator <b>600 W. Illinois, Midland, TX 79701</b>	
4. Well Location Unit Letter <b>B</b> : <b>990</b> feet from the <b>N</b> line and <b>1980</b> feet from the <b>E</b> line Section <b>1</b> Township <b>24S</b> Range <b>27E</b> NMPM County <b>Eddy</b>	
11. Elevation (Show whether DR, RKB, RT, GR, etc.) <b>3114.3 GR</b>	

12. Check Appropriate Box to Indicate Nature of Notice, Report or Other Data

NOTICE OF INTENTION TO:

PERFORM REMEDIAL WORK ☐ PLUG AND ABANDON ☒  
TEMPORARILY ABANDON ☐ CHANGE PLANS ☐  
PULL OR ALTER CASING ☐ MULTIPLE COMPL ☐  
DOWNHOLE COMMINGLE ☐

REMEDIAL WORK ☐  
COMMENCE CASING/CE ☐

OTHER: ☐

SUBSEQUENT REPORTS ARE AVAILABLE ON OUR  
[www.emnrd.state.nm.us](http://www.emnrd.state.nm.us)  
Current forms are available on our  
website and should be used when  
filing regulatory documents.

OTHER: ☐

13. Describe proposed or completed operations. (Clearly state all pertinent details, including pertinent dates, including estimated date of starting any proposed work). SEE RULE 19.15.7.14 NMAC. For Multiple Completions: Attach well bore diagram of proposed completion or recompletion.

1. MIRU plugging equipment. ND wellhead NU BOP.
2. Set CIBP @ 10350'. Circulate hole w/ mud laden fluid.
3. Spot 25 sx cement @ 10350-10280'.
4. Perf and squeeze @ 5950 and squeezed 55 sx cement @ 5950-5850' (bone springs)
5. Perf and squeeze 45 sx cement @ 2490-2390. Tag (9 5/8 shoe)
6. Perf and squeeze 125 sx cement @ 800-480. Tag (13 3/8 shoe & base of salt)
7. Perf and squeeze 65 sx cement @ 100-Surface.
8. Cut off wellhead and weld on Dry Hole Marker.

NM OIL CONSERVATION

ARTESIA DISTRICT

AUG 12 2015

RECEIVED

Approved for plugging of well bore only.  
Liability under bond is retained pending receipt  
of C-103 (Subsequent Report of Well Plugging)  
which may be found at OCD Web Page under  
Forms. [www.emnrd.state.nm.us/oed](http://www.emnrd.state.nm.us/oed).

Spud Date:

Rig Release Date:

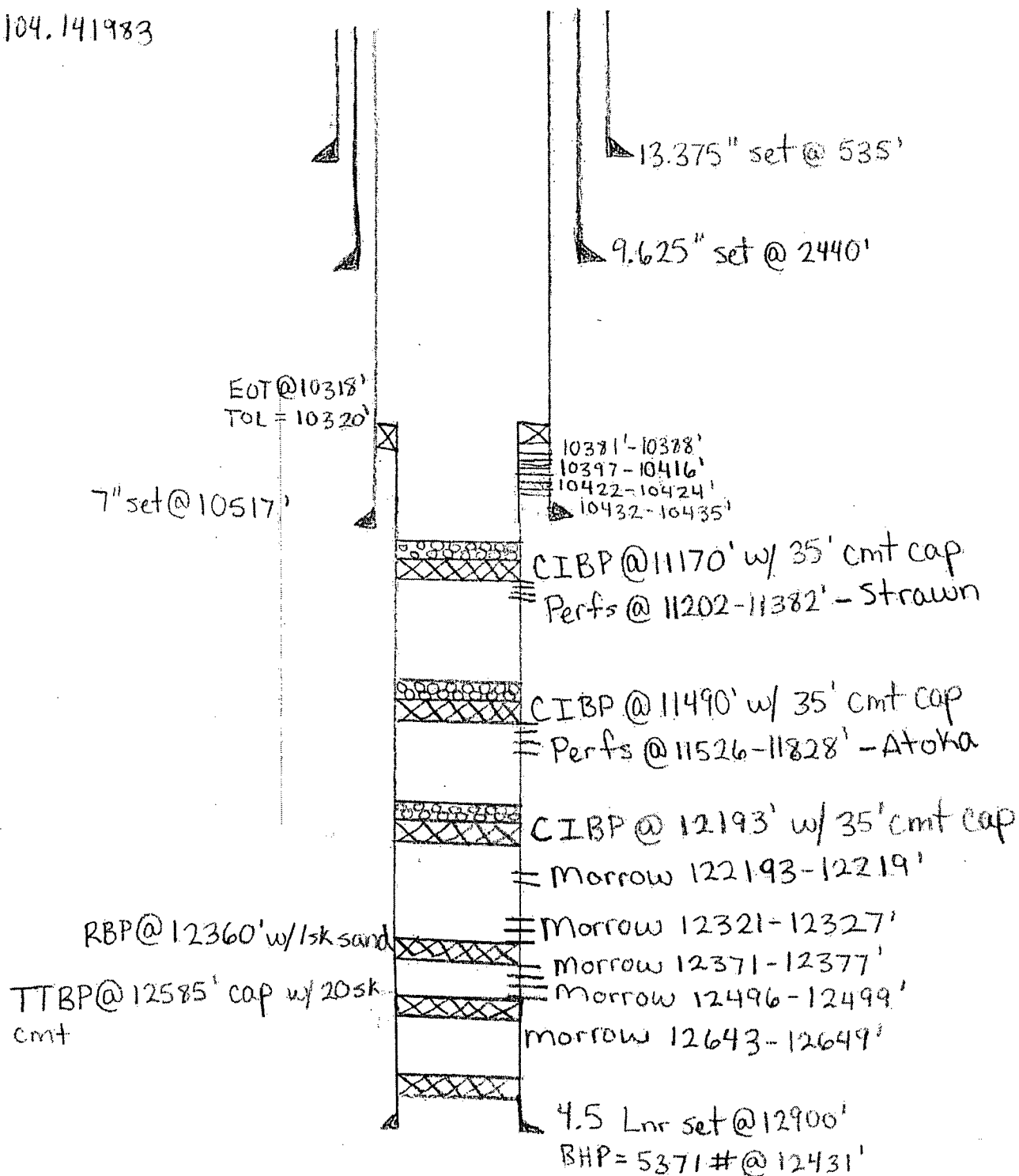
*Well Bore Must Be Plugged by 8-12-2016*

I hereby certify that the information above is true and complete to the best of my knowledge and belief.

SIGNATURE *Ben Montgomery* TITLE *Agent* DATE *8/12/15*  
Type or print name *Ben Montgomery* E-mail address: *ben@benandassociates.com* PHONE: *432-580-7161*  
For State Use Only  
APPROVED BY: *Dr. J. Supervisor* TITLE *Dr. J. Supervisor* DATE *8-12-2015*  
Conditions of Approval (if any):

*\* See Attached CDs*

Loving State I  
API 30-015-23729  
CoG Operating LLC  
Lat 32.2515526  
Long -104.141983



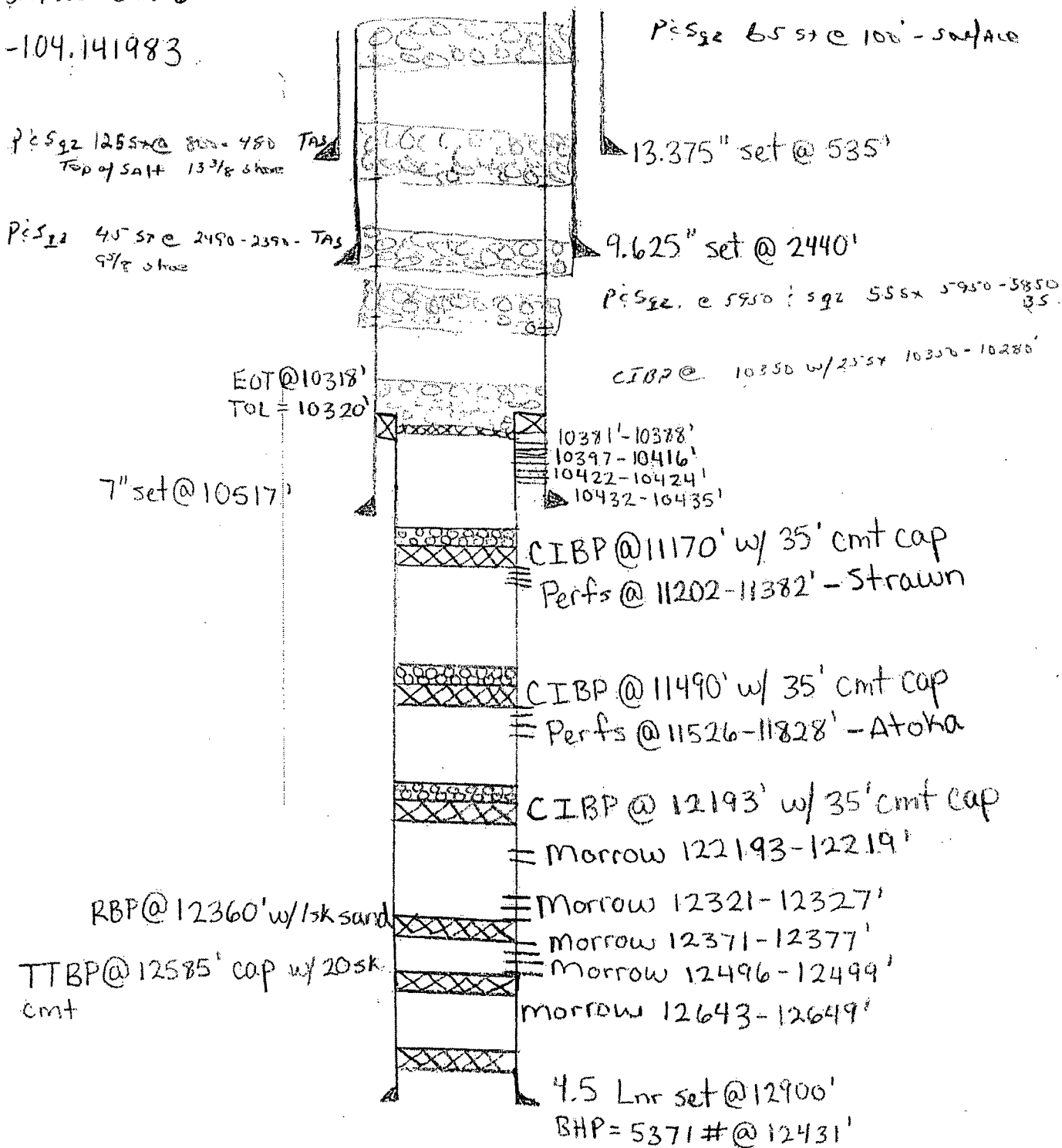
Loving State 1

API 30-015-23729

COG Operating LLC

Lat 32.2515526

Long -104.141983



NEW MEXICO OIL CONSERVATION DIVISION  
DISTRICT 2 OFFICE  
811 S. FIRST STREET  
ARTESIA, NM 88210  
(575)748-1283

**CONDITIONS OF APPROVAL FOR PLUGGING & ABANDONMENT**

Operator: COG.

Well Name & Number: Loving / State /

API #: 30-015-2329

1. Produced water **will not** be used during any part of the plugging & abandonment operation.
2. Notify NMOCD Dist. 2 office at least 24 hrs before beginning work.
3. Closed Loop System is to be used for entire plugging operation. Upon completion, contents of steel pit are to be hauled to a permitted disposal location.
4. Trucking companies being used to haul oilfield waste fluids to a disposal – commercial or ~~private~~ – ~~shall have an approved NMOCD C-133 permit.~~ A copy of this permit shall be available in each truck used to haul waste products. It is the responsibility of the operator, as well as the contractor, to verify that this permit is place prior to performing work. Drivers shall produce a copy upon request of NMOCD Field Inspectors.
5. A subsequent C-103 will serve as notification that the well bore has been plugged ONLY. A C-103 FINAL shall be filed before any bonding can be released on the well. Upon receipt of the Final, an inspection will be performed to verify that the location has been satisfactorily cleaned to NMOCD standards.
6. If work has not begun within 90 days of the approval of this procedure, an extension request must be filed, stating reason that well has not been plugged.
7. Every attempt must be made to clean the well bore out to below the perfs, before any plugs can be set, by whatever means possible.
8. Cement Retainers may not be used.
9. Squeeze pressures are not to exceed 500 PSI, unless approval is given by NMOCD.
10. Plugs may be combined after consulting with and getting approval from NMOCD.
11. Minimum WOC time for tag plugs will be 4 Hrs.

*Handwritten initials*

*8/12/15*

## GUIDELINES FOR PLUGGING AND ABANDONMENT

### DISTRICT II / ARTESIA

- All cement plugs will be a minimum of 100' in length or a minimum of 25 sacks of cement, whichever is greater.
- Mud laden fluids must be placed between all cement plugs.
- Mud laden fluids must be mixed at 25 sacks of gel per 100 bbls of water.
- A cement plug is required to be set 50' below and 50' above all casing shoes and casing stub plugs. These plugs must be tagged.
- A CIBP with 35' of cement on top may be set in lieu of 100' cement plug.
- A plug as indicated above must be placed within 100' of top perforation. This plug must be tagged.
- Plugs set below and above salt zones must be tagged.
- No more than 2000' is to be allowed between cement plugs in open hole and no more than 3000' in cased hole.
- DV tools are required to have a 100' cement plug set 50' above and below the tool and must be tagged.

- Formations to be isolated with plugs placed at the top of each formation are:

- Fusselman

- Devonian
    - Morrow
    - Wolfcamp
    - Bone Spring
    - Delaware
    - Any Salt Section (Plug at top and bottom)
    - Abo
    - Glorieta
    - Yates (this plug is usually at base of salt section)

- If cement does not exist behind casing strings at recommended formation depths, the casing must be cut and pulled with plugs set at these depths or casing must be perforated and cement squeezed behind casing at the formation depths.
- In the R-111-P area (Potash Mine area) a solid cement plug must be set across the salt section. Fluid used to mix the cement shall be saturated with the salts common to the section penetrated and in suitable proportions, but not more than a 3% calcium chloride by weight of cement will be considered the desired mixture whenever possible (50' below and 50' above).