

Carlsbad Field Office OCD Artesia

15-207

Form 3160-3
(March 2012)

NM OIL CONSERVATION
ARTESIA DISTRICT

JUL 21 2015

RECEIVED

UNITED STATES
DEPARTMENT OF THE INTERIOR
BUREAU OF LAND MANAGEMENT

APPLICATION FOR PERMIT TO DRILL OR REENTER

FORM APPROVED
OMB No. 1004-0137
Expires October 31, 2014

5. Lease Serial No.
NM-019612, NM-017225B, NM-035607

6. If Indian, Allottee or Tribe Name

7. If Unit or CA Agreement, Name and No.

8. Lease Name and Well No.
RDX FEDERAL COM 28-9H

9. API Well No.

30-015-43294

10. Field and Pool, or Exploratory
UNDESIGNATED WOLFCAMP (84330)

11. Sec., T. R. M. or Blk. and Survey or Area
SHL: SECTION 28, T. 26 S., R. 30 E.
BHL: SECTION 33, T. 26 S., R. 30 E.

12. County or Parish
EDDY

13. State
NM

1a. Type of work: ☒ DRILL ☐ REENTER

1b. Type of Well: ☐ Oil Well ☒ Gas Well ☐ Other ☒ Single Zone ☐ Multiple Zone

2. Name of Operator RKI EXPLORATION & PRODUCTION, LLC.

3a. Address 210 PARK AVENUE, SUITE 900
OKLAHOMA CITY, OKLAHOMA 73102

3b. Phone No. (include area code)
(405) 987-2226 (Sam McCurdy)

4. Location of Well (Report location clearly and in accordance with any State requirements.)*

At surface 360 FNL & 1345 FWL (First Take: 330 FNL & 660 FWL)

At proposed prod. zone 230 FSL & 660 FWL (Last Take: 330 FSL & 660 FWL)

14. Distance in miles and direction from nearest town or post office*
15 MILES SOUTHEAST OF MALAGA, NM

15. Distance from proposed*
location to nearest SHL: 360'
property or lease line, ft. BHL: 230'
(Also to nearest drig. unit line, if any)

16. No. of acres in lease
SHL: 1160
BHL: 290.72

17. Spacing Unit dedicated to this well
449.5

18. Distance from proposed location*
to nearest well, drilling, completed, SHL: 25'
applied for, on this lease, ft. BHL: 792'

19. Proposed Depth
TVD: 10,700'
MD: 17,398'

20. BLM/BIA Bond No. on file
NLM-NMB-000460

21. Elevations (Show whether DF, KDB, RT, GL, etc.)
3013' GL

22. Approximate date work will start*

ASAP

23. Estimated duration
35 DAYS

24. Attachments

The following, completed in accordance with the requirements of Onshore Oil and Gas Order No.1, must be attached to this form:

1. Well plat certified by a registered surveyor.
2. A Drilling Plan.
3. A Surface Use Plan (if the location is on National Forest System Lands, the SUPO must be filed with the appropriate Forest Service Office).
4. Bond to cover the operations unless covered by an existing bond on file (see Item 20 above).
5. Operator certification
6. Such other site specific information and/or plans as may be required by the BLM.

25. Signature

Barry W. Hunt

Name (Printed/Typed)
BARRY W. HUNT

Date

11/6/14

Title

PERMIT AGENT FOR RKI EXPLORATION & PRODUCTION, LLC.

Approved by (Signature)

ISI JEANETTE MARTINEZ

Name (Printed/Typed)

Date

JUL 16 2015

Title

FIELD MANAGER

Office

CARLSBAD FIELD OFFICE

Application approval does not warrant or certify that the applicant holds legal or equitable title to those rights in the subject lease which would entitle the applicant to conduct operations thereon.

Conditions of approval, if any, are attached.

APPROVAL FOR TWO YEARS

Title 18 U.S.C. Section 1001 and Title 43 U.S.C. Section 1212, make it a crime for any person knowingly and willfully to make to any department or agency of the United States any false, fictitious or fraudulent statements or representations as to any matter within its jurisdiction.

(Continued on page 2)

*(Instructions on page 2)

Carlsbad Controlled Water Basin

8/14/15

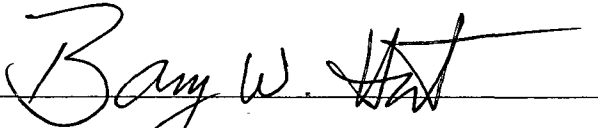
Approval Subject to General Requirements
& Special Stipulations Attached

SEE ATTACHED FOR
CONDITIONS OF APPROVAL

CERTIFICATION

I hereby certify that I, or persons under my direct supervision, have inspected the proposed drill site and access road proposed herein; that I am familiar with the conditions that presently exist; that I have full knowledge of State and Federal laws applicable to this operation; that the statements made in this APD package are, to the best of my knowledge, true and correct, and that the work associated with the operations proposed herein will be performed in conformity with this APD package and the terms and conditions under which it is approved. I also certify that I, or RKI Exploration and Production, LLC am responsible for the operations conducted under this application. These statements are subject to the provisions of 18 U. S. C. 1001 for the filing of false statements. Executed this 4th day of November 2014.

Signed: _____



Printed Name: Barry Hunt

Position: Agent for RKI Exploration & Production, LLC.

Address: 1403 Springs Farm Place, Carlsbad, NM 88220

Telephone: (575) 361-4078

E-mail: specialtpermitting@gmail.com

DISTRICT I
1625 N. French Dr., Hobbs, NM 88240
Phone: (575) 393-6161 Fax: (575) 393-0720

DISTRICT II
811 S. First St., Artesia, NM 88210
Phone: (575) 748-1283 Fax: (575) 748-9720

DISTRICT III
1000 Rio Hondo Rd., Artesia, NM 87410
Phone: (505) 334-6178 Fax: (505) 334-6170

DISTRICT IV
1220 S. St. Francis Dr., Santa Fe, NM 87505
Phone: (505) 476-3460 Fax: (505) 476-3462

State of New Mexico
Energy, Minerals & Natural Resources Department
OIL CONSERVATION DIVISION
1220 South St. Francis Dr.
Santa Fe, New Mexico 87505

NM OIL CONSERVATION
ARTESIA DISTRICT

JUL 21 2015

RECEIVED

Form C-102
Revised August 1, 2011
Submit one copy to appropriate
District Office
☐ AMENDED REPORT

WELL LOCATION AND ACREAGE DEDICATION PLAT

Property Code 40485	Property Name RDX FEDERAL COM 28	Well Number 9H
GRID No. 246289	Operator Name RKI EXPLORATION & PRODUCTION	Elevation 3013

Surface Location

UL or lot no.	Section	Township	Range	Lot Idn	Feet from the	North/South line	Feet from the	East/West line	County
C	28	26 S	30 E		360	NORTH	1345	WEST	EDDY

Bottom Hole Location If Different From Surface

UL or lot no.	Section	Township	Range	Lot Idn	Feet from the	North/South line	Feet from the	East/West line	County
4	33	26 S	30 E		230	SOUTH	660	WEST	EDDY

Dedicated Acres 449.5	Joint or Infill	Consolidated Code	Order No.
---------------------------------	-----------------	-------------------	-----------

No allowable will be assigned to this completion until all interests have been consolidated or a non-standard unit has been approved by the division.

FIRST TAKE
330' FNL &
660' FWL
NMSP-E (NAD 83)
N (Y) = 371201.1'
E (X) = 677902.0'

NW COR SEC 28
NMSP-E (NAD 83)
N (Y) = 371527.1'
E (X) = 677240.1'

W/4 COR SEC 28
NMSP-E (NAD 83)
N (Y) = 368869.6'
E (X) = 677255.9'

SW COR SEC 28
NW COR SEC 33
NMSP-E (NAD 83)
N (Y) = 366212.5'
E (X) = 677272.5'

LAST TAKE
330' FSL &
660' FWL
NMSP-E (NAD 83)
N (Y) = 364395.4'
E (X) = 677940.3'

SW COR SEC 33
NMSP-E (NAD 83)
N (Y) = 364062.2'
E (X) = 677281.8'

S/4 COR SEC 33
NMSP-E (NAD 83)
N (Y) = 364074.7'
E (X) = 679939.0'

SE COR SEC 33
NMSP-E (NAD 83)
N (Y) = 364087.5'
E (X) = 682596.1'

NE COR SEC 28
NMSP-E (NAD 83)
N (Y) = 371559.3'
E (X) = 682558.1'

RDY FEDERAL COM 28 9H SHL
NMSP-E (NAD 83)
N (Y) = 371175.2'
E (X) = 678586.9'
LAT. = 32°01'10.80"N
LONG. = 103°53'25.74"W
NMSP-E (NAD 27)
N (Y) = 371117.9'
E (X) = 637400.7'
LAT. = 32.0195424°N
LONG. = 103.8800057°W

RDY FEDERAL COM 28 9H BHL
NMSP-E (NAD 83)
N (Y) = 364295.4'
E (X) = 677940.8'
LAT. = 32°00'02.75"N
LONG. = 103°53'33.57"W
NMSP-E (NAD 27)
N (Y) = 364238.3'
E (X) = 636754.4'
LAT. = 32.0006375°N
LONG. = 103.8921815°W

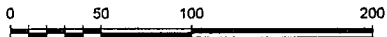
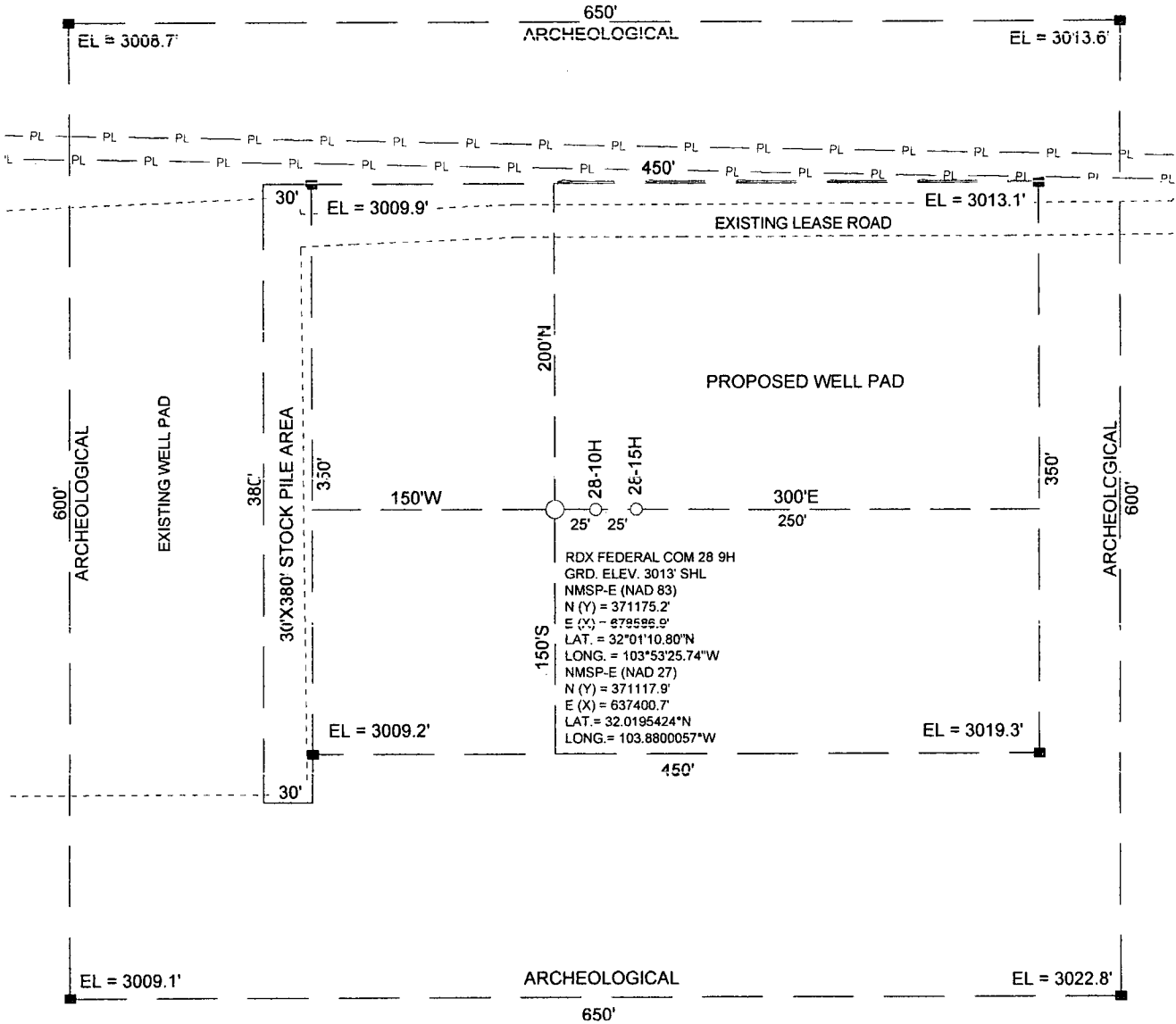
OPERATOR CERTIFICATION
I hereby certify that the information contained herein is true and complete to the best of my knowledge and belief, and that this organization either owns a working interest or unleased mineral interest in the land including the proposed bottom hole location or has a right to drill this well at this location pursuant to a contract with an owner of such a mineral or working interest, or to voluntary pooling agreement or a compulsory pooling order heretofore entered by the division.

Barry W. Hunt 11/6/14
Signature Date
Barry W. Hunt
Print Name
E-mail Address

SURVEYORS CERTIFICATION
I hereby certify that the well location shown on this plat was plotted from field notes of actual surveys made by me or under my supervision, and that the same is true and correct to the best of my belief.

SEPTEMBER 26, 2014
Date of Survey
Signature and Seal of Professional Surveyor
James E. Tompkins
Job No. WTC50115
JAMES E. TOMPKINS 14729
Certificate Number

SITE LOCATION



GRAPHIC SCALE 1" = 100'

SECTION 28, T 26 S, R 30 E, N.M.P.M.

COUNTY: EDDY STATE: NM

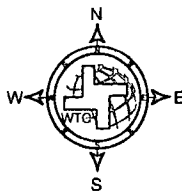
DESCRIPTION: 360' FNL & 1345' FWL

OPERATOR: RKI EXPLORATION & PRODUCTION

WELL NAME: RDX FEDERAL COM 28 9H



W T C, INC.
405 S.W. 1st. STREET
ANDREWS, TEXAS 79714
(432) 523-2181



DRIVING DIRECTIONS:

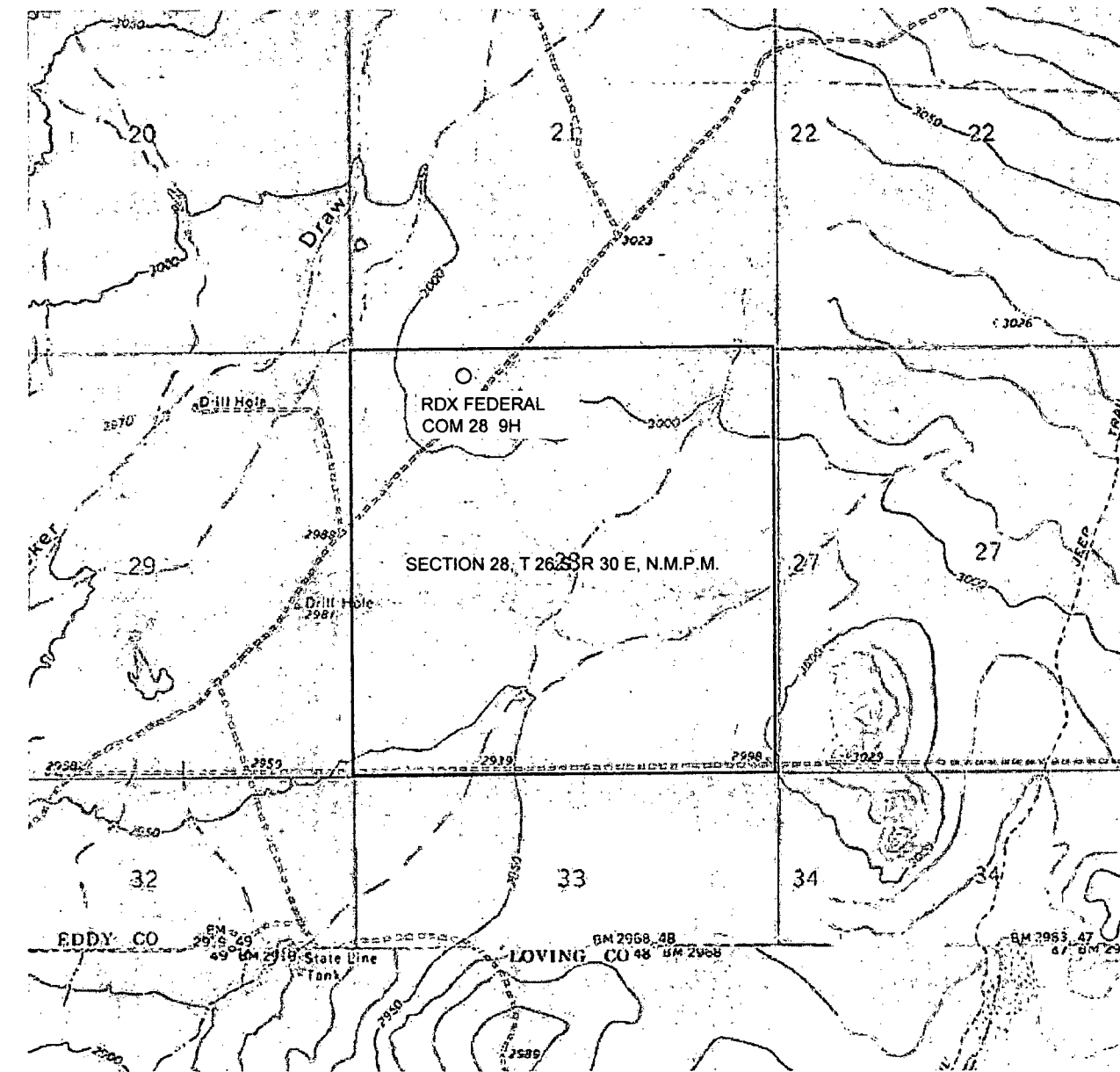
From Stateline Road and County Road 1, go 6.5 miles west. Turn right on lease road and go 0.4 miles to "Y". Go right on lease road and go 2.8 miles west to lease road left go 0.6 miles southeast the location flag is \pm 550 feet to the southwest.

RKI EXPLORATION & PRODUCTION

JOB No.: WTC50115

© 2006 by the American Psychological Association or one of its allied publishers. This article is intended solely for the personal use of the individual user and is not to be disseminated broadly.

LOCATION VERIFICATION MAP



0 1000 2000 4000

GRAPHIC SCALE 1" = 2000'

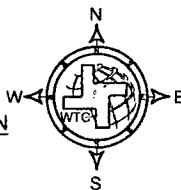
SECTION 28, T 26 S, R 30 E, N.M.P.M.

COUNTY: EDDY STATE: NM

DESCRIPTION: 360' FNL & 1345' FWL

OPERATOR: RKI EXPLORATION & PRODUCTION

WELL NAME: RDX FEDERAL COM 28 9H



DRIVING DIRECTIONS:

From Stateline Road and County Road 1, go 6.5 miles west. Turn right on lease road and go 0.4 miles to "Y". Go right on lease road and go 2.8 miles west to lease road left go 0.6 miles southeast the location flag is ± 550 feet to the southwest.



WTC, INC.
405 S.W. 1st STREET
ANDREWS, TEXAS 79714
(432) 523-2181

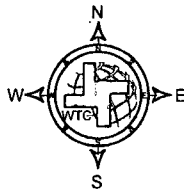
RKI EXPLORATION & PRODUCTION

JOB No.: WTC50115

The map displays a grid of townships and ranges. The townships are labeled T-25-S and T-26-S. The ranges are labeled R-29-E, R-30-E, and R-31-E. The map includes several creeks and roads, including Rock Dove, Buck Jackson, Hedgehog, Tarbuck, and Fish Creek. A specific area in the bottom center is shaded with diagonal lines and labeled with the number 28.



WELL NAME: RDX FEDERAL COM 28 9H



From Stateline Road and County Road 1, go 6.5 miles west. Turn right on lease road and go 0.4 miles to "Y". Go right on lease road and go 2.8 miles west to lease road left go 0.6 miles southeast the location flag is \pm 550 feet to the southwest.



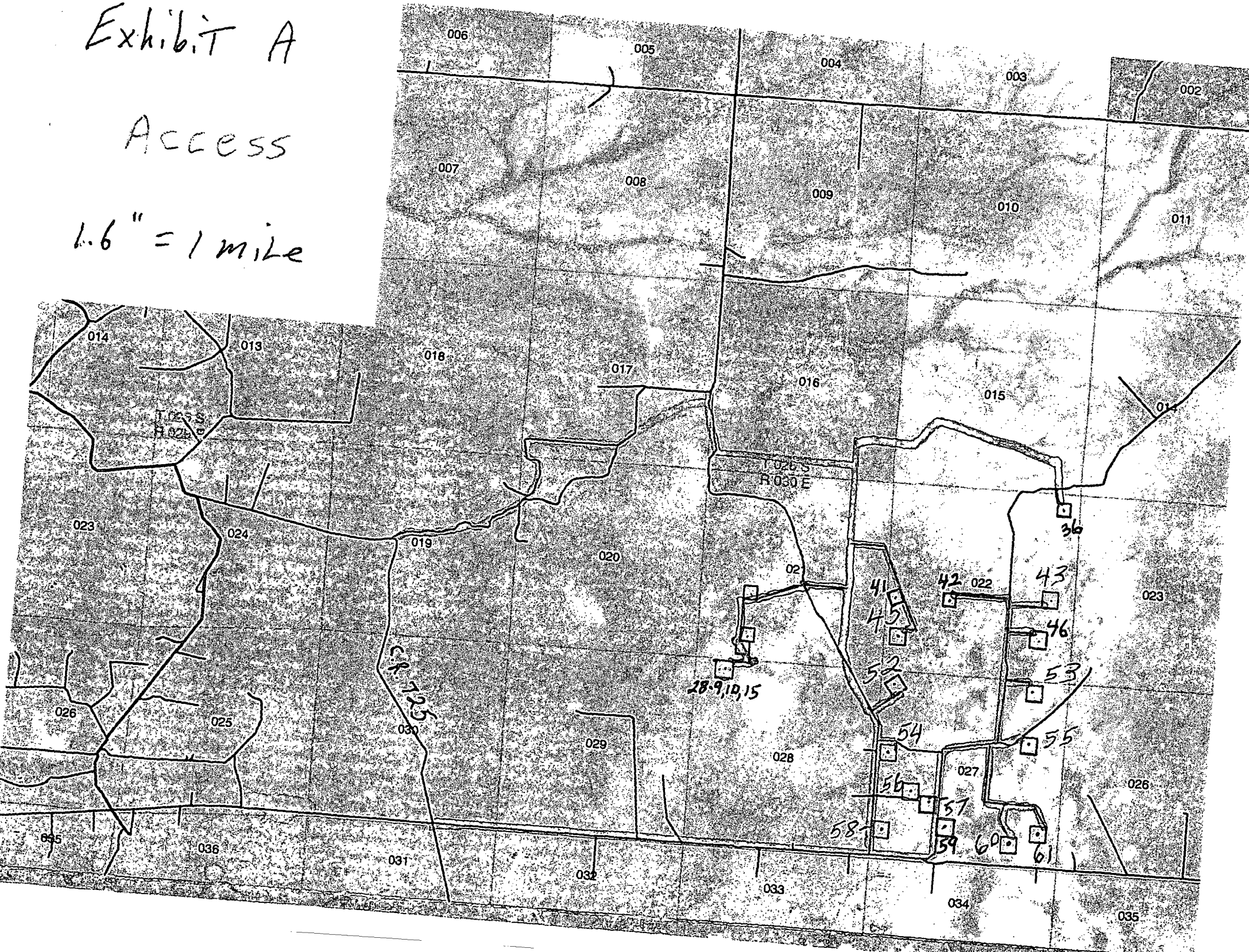
RKI EXPLORATION & PRODUCTION

JOB No.: WTC50115

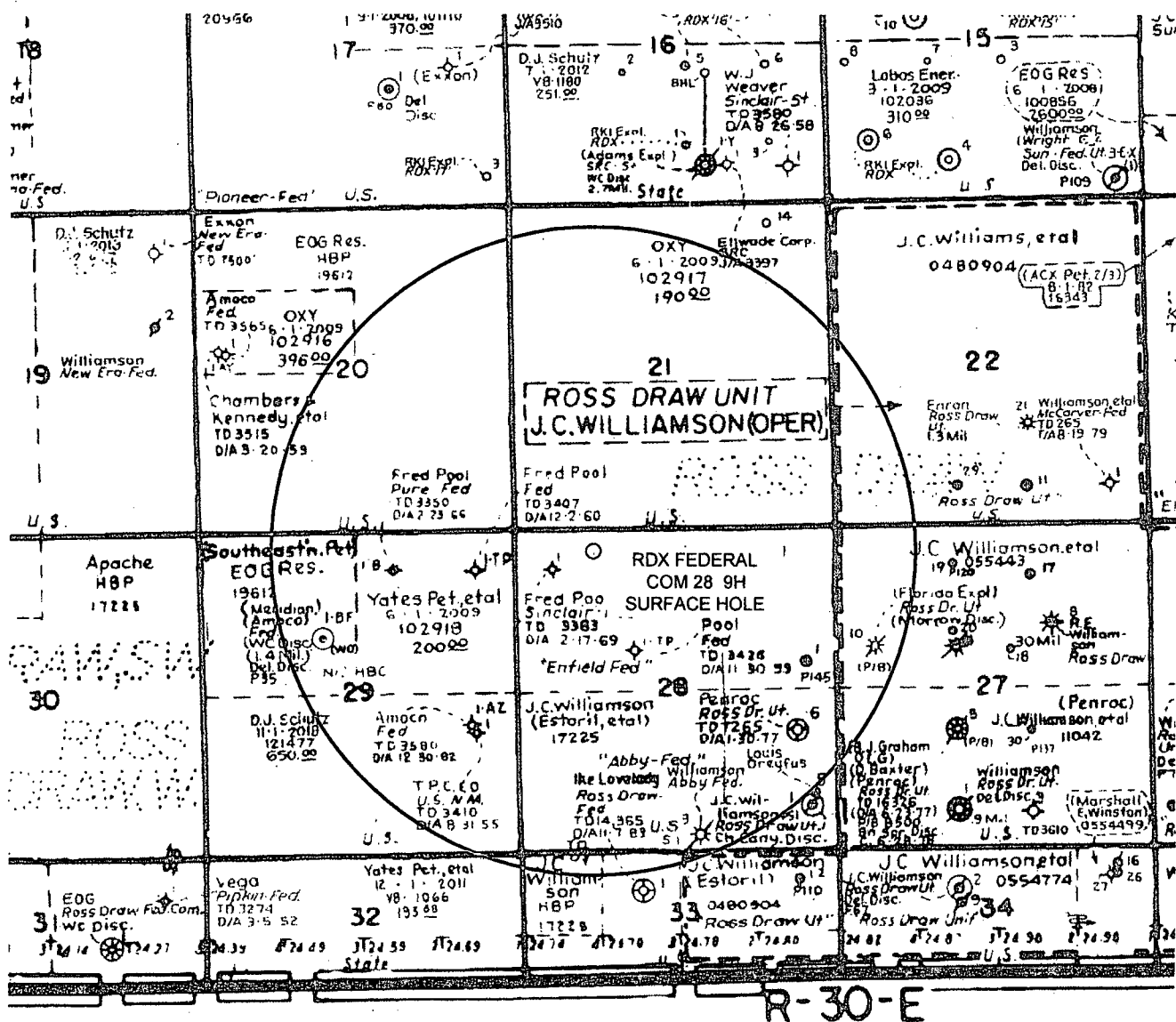
Exhibit A

Access

1.6" = 1 mile



Ex. B



0 .5 1 1.5

GRAPHIC SCALE 1" = 1/2 MILE

SECTION 28, T 26 S, R 30 E, N.M.P.M.

COUNTY: EDDY STATE: NM

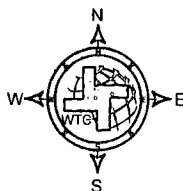
DESCRIPTION: 360' FNL & 1345' FWL

OPERATOR: RKI EXPLORATION & PRODUCTION

WELL NAME: RDX FEDERAL COM 28 9H



W T C, INC.
405 S.W. 1st. STREET
ANDREWS, TEXAS 79714
(432) 523-2181



DRIVING DIRECTIONS:

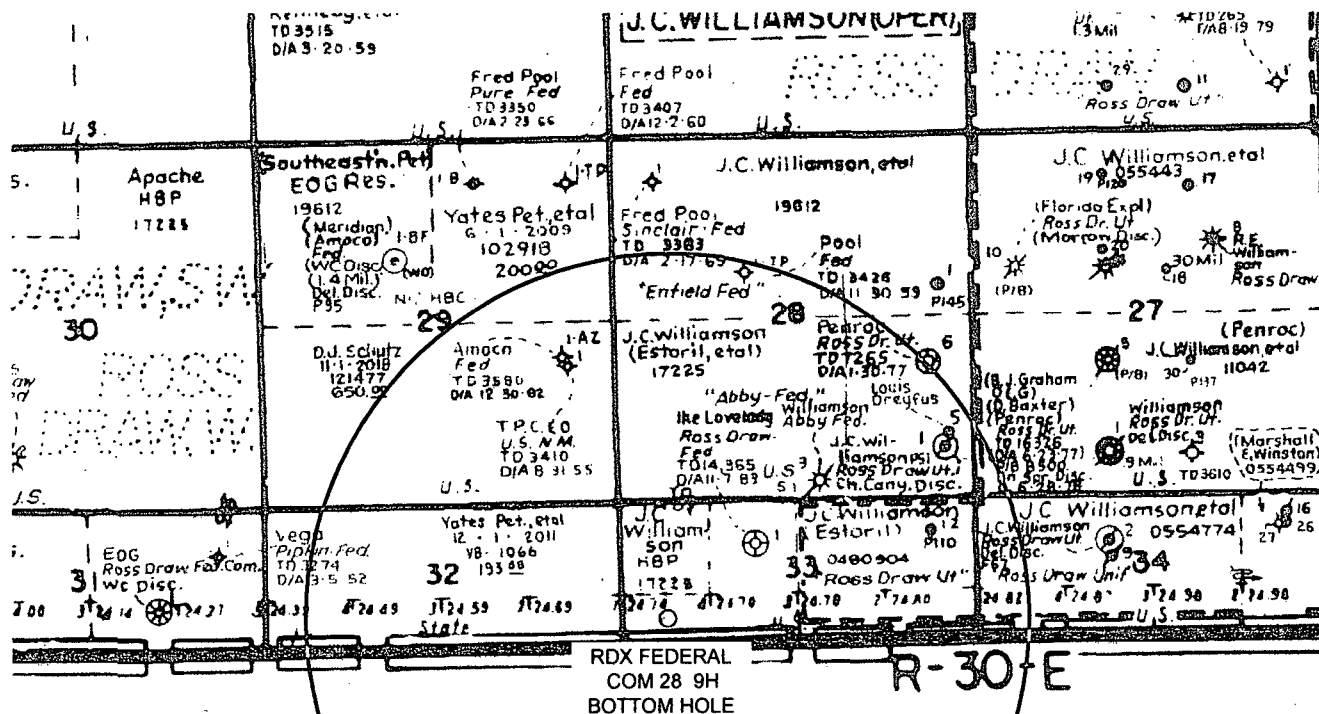
From Stateline Road and County Road 1, go 6.5 miles west. Turn right on lease road and go 0.4 miles to "Y". Go right on lease road and go 2.8 miles west to lease road left go 0.6 miles southeast the location flag is \pm 550 feet to the southwest.

RKI EXPLORATION & PRODUCTION

JOB No.: WTC50115

[illegible]

BOTTOM HOLE LOCATION



GRAPHIC SCALE 1" = 1/2 MILE

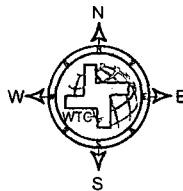
SECTION 28, T 26 S, R 30 E, N.M.P.M.

COUNTY: EDDY STATE: NM

DESCRIPTION: 360' FNL & 1345' FWL

OPERATOR: RKI EXPLORATION & PRODUCTION

WELL NAME: RDX FEDERAL COM 28 9H



DRIVING DIRECTIONS:

From Stateline Road and County Road 1, go 6.5 miles west. Turn right on lease road and go 0.4 miles to "Y". Go right on lease road and go 2.8 miles west to lease road left go 0.6 miles southeast the location flag is ± 550 feet to the southwest.



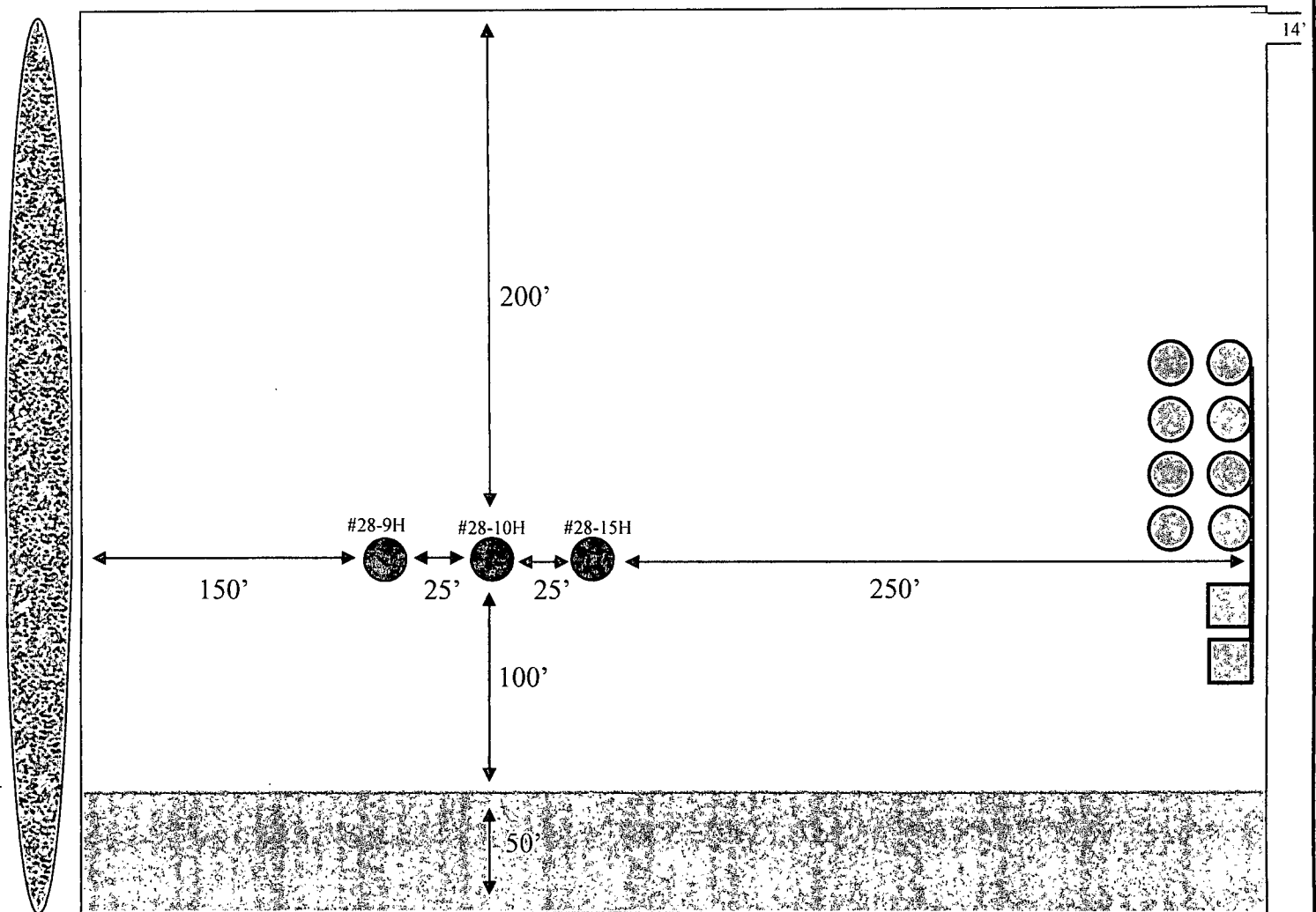
WTC, INC.
405 S.W. 1st STREET
ANDREWS, TEXAS 79714
(432) 523-2181

RKI EXPLORATION & PRODUCTION

JOB No.: WTC50115

EXHIBIT C

Interim Reclamation & Production Facilities RDX FEDERAL COM 28-9H, 28-10H & 28-15H V-DOOR WEST



LEGEND



Well Bore



Topsoil



Interim Reclamation



Berm

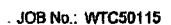


Production Facilities



NORTH

SITE LOCATION



RKI Exploration & Production, LLC
Drilling Program

Well RDX-Fed Com 28-9H
Location Surface: 360 FNL 1,345 FWL Sec. 28-26S-30E
Bottom Hole: 230 FSL 660 FWL Sec. 33-26S-30E
County Eddy
State New Mexico

- 1) The elevation of the unprepared ground is. 3,013 feet above sea level.
25 KB 3,038
2) A rotary rig will be utilized to drill the well to 17,398 feet and run casing.
This equipment will then be rigged down and the well will be completed with a workover rig
3) Proposed depth is 17,398 feet measured depth

4) Estimated tops:

	MD	TVD	Thickness	Fluid	
Rustler	800	800		Freshwater	
Salado	1,100	1,100			
Base Lamar Lime	3,427	3,388			BHP
Cherry Canyon Sand	4,534	4,462		Oil	1,963 psi
Bone Spring Lime	7,266	7,187		Oil	3,162 psi
Bone Spring 1st SS	8,223	8,144		Oil	3,583 psi
Bone Spring 2nd SS	8,861	8,782		Oil	3,864 psi
Bone Spring 3rd SS	10,109	10,030		Oil	4,413 psi
KQP	10,135	10,056		Oil	4,425 psi
Wolfcamp	10,509	10,404		Oil	4,578 psi
Wolfcamp Target Top	11,135	10,700		Oil	4,708 psi
Landing Point	11,135	10,700			4,708 psi
					psi
Total Depth	17,398	10,700			230 Degrees F
Lateral Length	6,263 MD				

*Note: All mineral resources encountered will be protected by running casing and raising cement across all encountered resources

5) Casing program:

See COA

Hole Size	Top	Bottom	OD Csg	Weight	Grade	Connection	Burst	Pressure Max	Burst SF
17 1/2"	0	1,000	13 3/8"	54.5	J-55	STC	2730	468	5.83
12 1/4"	0	7,266	9 5/8"	40	HCL-80	LTC	5750	3778	1.52
8 3/4"	0	17,398	5 1/2"	20	P-110	BTC	12630	10000	1.26
*Burst SF = Burst / Pmax									
Hole Size	Top	Bottom	OD Csg	Weight	Grade	Connection	Collapse	Mud Weight	Collapse SF
17 1/2"	0	1,000	13 3/8"	54.5	J-55	STC	1580	9.0	3.38
12 1/4"	0	7,266	9 5/8"	40	HCL-80	LTC	4230	10.0	1.12
8 3/4"	0	17,398	5 1/2"	20	P-110	BTC	12100	11.5	1.16
*Collapse SF = (Collapse/(mw x 0.052 x Depth))									
Hole Size	Top	Bottom	OD Csg	Weight	Grade	Connection	Tension	Tension Load	Tension SF
17 1/2"	0	1,000	13 3/8"	54.5	J-55	STC	420000	54500	7.71
12 1/4"	0	7,266	9 5/8"	40	HCL-80	LTC	936000	290640	3.22
8 3/4"	0	17,398	5 1/2"	20	P-110	BTC	641000	347950	1.84

*All casing load assumptions are based on Air Wt. Burst design assumes Max Frac Pressure (10K), & Collapse design assumes evacuated & max Mud Weight during interval.

Minimum Design Standards

Collapse 1.1
Burst 1
Tension 1.9

All casing will be new
Casing design subject to revision based on geologic conditions encountered

Cement program:

6) Surface

17 1/2" hole
 Pipe OD 13 3/8" **215**
 Setting Depth ~~1,000~~ ft
 Annular Volume 0.6947 cf/ft
 Tail 200
 Shoe Joint 36.5
 Excess 1 100 %
 383 ft

Lead 642 sx 1.75 cf/sk 13.5 ppg 9.13 gal/sk
 Tail 200 sx 1.33 cf/sk 14.8 ppg 6.32 gal/sk

Lead: "C" + 4% PF20 (gel) + 2% PF1 (CC) + .125 pps PF29 (CelloFlake) + .4 pps PF46 (antifoam)
 Tail: "C" + 1% PF1 (CC)

Top of cement: Surface
 3 centralizers on bottom 3 jts 1 per jt, then 1 every other jt

Intermediate

12 1/4" hole
 Pipe OD 9 5/8"
 Setting Depth 7,266 ft
 Annular Volume 0.3132 cf/ft 0.323 cf/ft
 DV Tool 5,500 ft
 Excess 1st Stage 0.6 60 %
 2nd Stage 1.6 160 %

Stage 1:
 Lead 598 sx 1.48 cf/sk 13 ppg 7.609 gal/sk

Lead: PVL + 1.3% PF44 + 5% PF174 + .5% PF606 + .4% PF13 + .1% PF153 + .4 pps PF45

Top of cement: 5,500 ft DV tool: 5,500 ft
 1 per joint bottom 3 joints, then 1 every 3th jt

Stage 2:

Lead 1308 sx 2.87 cf/sk 11.6 ppg 16.793 gal/sk
 Tail 175 sx 1.33 cf/sk 14.8 ppg 6.331 gal/sk

Lead: 35/65 Poz "C" + 5% PF44 + 6% PF20 + .2% PF13 + .125 ps PF29 + .4 pps PF46
 Tail: "C" + .2% PF13

Top of cement: SURFACE ft
 1 per joint bottom 3 joints, then 1 every 3th jt

Production

8 3/4" hole
 Pipe OD (in OH) 5 1/2"
 Setting Depth 17,398 ft
 Annular Volume 0.2526 cf/ft 0.2526 cf/ft
 Excess 0.35 35 %

Lead 686 sx 1.47 cf/sk 13 ppg gal/sk
 Tail 1310 sx 1.89 cf/sk 13 ppg 9.632 gal/sk

Lead: PVL + 1.3% PF44 + 5% PF174 + .5% PF606 + .3% PF 813 + .1% PF153 + .4pps PF45
 Tail: AcidSolid PVL + 5% PF174 + .7% PF606 + .2% PF153 + .5% PF13 + 30% PF151 + .4 pps PF47

Top of cement: 6,966 ft
 1 per joint bottom 3 joints, then every 3rd joint to top of cement

*NOTE: A cement bond log will be ran across 9 5/8" Intermediate casing

7) Pressure control equipment:

The blowout preventer equipment will be 5,000 psi rated as shown in the attached BOP diagram and consist of the following

- Annular preventer
- Pipe rams
- Blind rams
- Pipe rams
- Drilling spool or blowout preventer with 2 side outlets (choke side shall be a 3" minimum diameter, kill side shall be at least 2" diameter)
- Choke line shall be 3" minimum diameter
- 2 choke line valves, 3" minimum diameter
- 2 chokes with 1 remotely controlled from the rig floor
- Kill line, 2" minimum diameter
- 2 kill line valves and a check valve, 2" minimum diameter
- Upper and lower kelly cock valves with handles readily available
- Safety valves and subs to fit all drill string connections in use shall be readily available
- Inside BOP or float available
- Pressure gauge on choke manifold
- All BOPE subjected to pressure shall be flanged, welded, or clamped
- Fill-up line above uppermost preventer

See COA

A 13 3/8" SOW x 13 5/8" 5M multi-bowl casing head will be installed and utilized until Total Depth is reached.
 The 9 5/8" casing will be landed in the head on a casing mandrel, and the stack will not be broker until total depth has been reached. Before drilling out the 9 5/8" casing will be tested to .22 psi/ft of casing setting depth or 1,500 psi whichever is greater, but not exceeding 70% of the burst rating of the pipe.
 After drilling approximately 10 feet of new formation an EMW test of 11.0 ppg will be performed.
 Pipe rams will be operated and checked each 24 hour period and each time the drill string is out of the hole. These function test will be documented on the daily driller's log.

8) Mud program:

Top	Bottom	Mud Wt.	Vis	PV	YP	Fluid Loss	Type System	
715	0	1,000	8.3 to 8.5	28 to 30	1 - 6	1 - 6	NC	Fresh Water ND
	1,000	7,266	9.8 to 10	28 to 30	1 - 10	1 - 12	NC	Brine
	7,266	10,135	8.8 to 9.3	35 to 40	8 - 10	10 - 12	NC	Cut Brine
	10,135	17,398	9.3 to 10.5	45 to 55	8 - 12	6 - 10	10 to 15	Cut Brine

*Enough Barite will be stored on location to weight up mud system to an 11.5 ppg mud weight if needed (2751 sx from 9.3 ppg to 11.5 ppg - 2000 bbl system). Formula: Barite Required (lbs) = [(35.05 x (Wf-Wi))/(35.05-Wf)] x Mud Volume (gals).

*Pason PVT equipment will monitor all pit levels at all times, in the event an influx occurred

9) Logging, coring, and testing program:

No drill stem test or cores are planned
 Neutron/Density, Resistivity, Gamma Ray, Caliper will be run at Pilot Hole Total Depth
 Neutron, Gamma Ray, Caliper will be run from TD to surface

10) Potential hazards:

No H2S is known to exist in the area.
 Lost circulation can occur, lost circulation material will be readily available if needed

11) Anticipated start date ASAP
 Duration 35 days

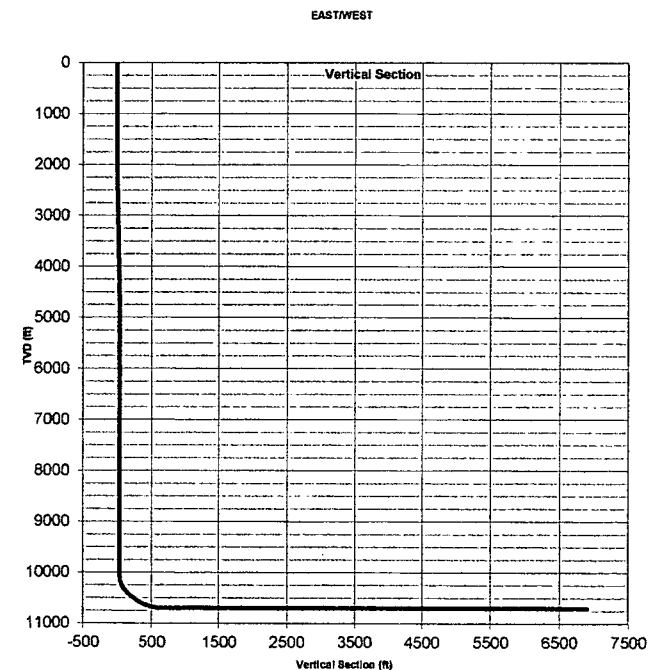
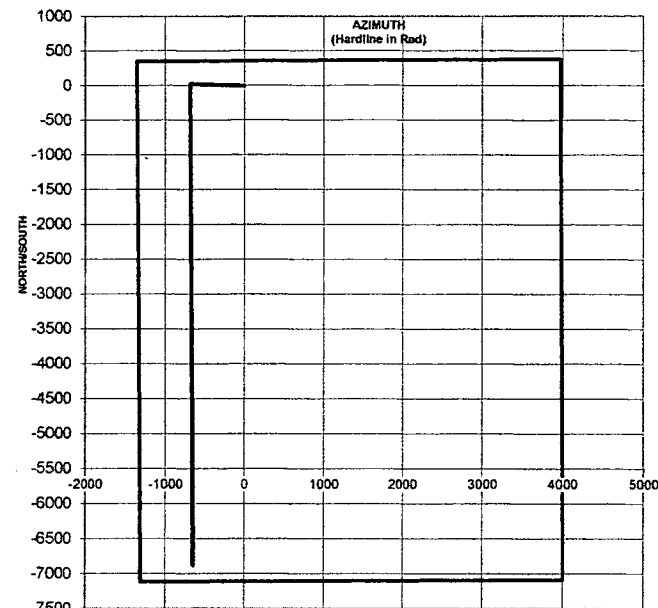
RKI EXPLORATION

RIG:

WELL: RDX Fed Com 28-9H
LOCATION: 360' FNL & 1345' FWL 28-26S-30E
BHL: 230' FSL & 660' FWL 33-26S-30E

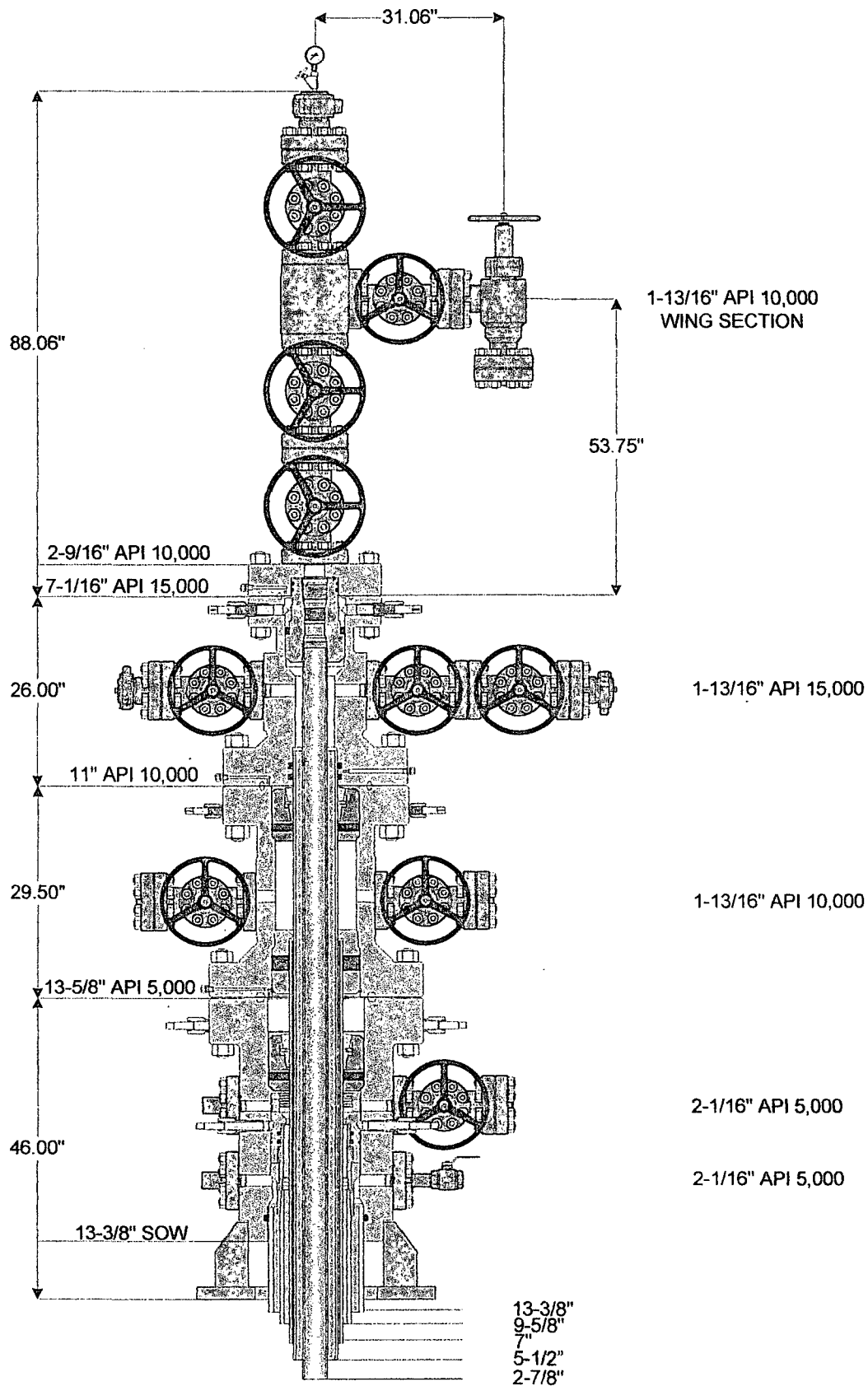
Target Direction: 185.37 deg
North/South Hard Line: 330
East/West Hard Line: 2,310

STATION	SURVEY						VERT.	DLS/100
NUMBER	DEPTH	INC	AZMTH	TVD	N-S	E-W	SECTION	
Tie-In								
	1800.0			1800				
	1900.0	3.0	272.17	1900	0	-3	0	3.0
	2000.0	6.0	272.17	2000	0	-10	1	3.0
	2100.0	9.0	272.17	2099	1	-23	1	3.0
	2200.0	12.0	272.17	2197	2	-42	2	3.0
	2300.0	14.0	272.17	2295	2	-64	4	2.0
Lamar Base	3427.0	14.0	272.17	3388	13	-337	19	
Cherry Cnyn	4533.8	14.0	272.17	4462	23	-604	34	
	4600.0	14.0	272.17	4526	23	-620	35	
	4700.0	12.0	272.17	4624	24	-643	36	2.0
	4800.0	9.00	272.17	4722	25	-661	37	3.0
	4900.0	6.00	272.17	4821	25	-674	38	3.0
	5000.0	3.00	272.17	4921	26	-682	38	3.0
	5100.0		272.17	5021	26	-684	38	3.0
BS Lime	7266.3			7187	26	-684	38	
BSpg 1 SS	8223.3			8144	26	-684	38	
BSpg 2 SS	8861.3			8782	26	-684	38	
BSpg 3 SS	10109.3			10030	26	-684	38	
KOP	10135.3		179.68	10056	26	-684	38	
	10235.3	10.00	179.68	10156	17	-684	47	10.0
	10335.3	20.00	179.68	10252	-9	-684	73	10.0
	10435.3	30.00	179.68	10342	-51	-684	115	10.0
Wolfcamp	10509.0	37.36	179.68	10404	-92	-684	155	10.0
	10535.3	40.00	179.68	10424	-108	-684	172	10.0
	10585.3	45.00	179.68	10461	-142	-683	205	10.0
	10685.3	45.00	179.68	10532	-213	-683	276	
	10735.3	50.00	179.68	10566	-249	-683	312	10.0
	10835.3	60.00	179.68	10623	-331	-682	394	10.0
	10935.3	70.00	179.68	10665	-422	-682	484	10.0
	11035.3	80.00	179.68	10691	-518	-681	580	10.0
Wolfcamp TT	11135.3	90.00	179.68	10700	-618	-681	679	10.0
	11225.0	90.00	179.68	10700	-707	-680	768	
	11325.3	90.00	179.68	10700	-808	-680	868	
	11557.8	90.00	179.68	10700	-1040	-678	1099	
	11657.8	90.00	179.68	10700	-1140	-678	1199	
	11757.8	90.00	179.68	10700	-1240	-677	1298	
	11857.8	90.00	179.68	10700	-1340	-677	1398	
	11957.8	90.00	179.68	10700	-1440	-676	1497	
	12057.8	90.00	179.68	10700	-1540	-676	1597	
	12157.8	90.00	179.68	10700	-1640	-675	1696	
	12257.8	90.00	179.68	10700	-1740	-675	1796	
	12357.8	90.00	179.68	10700	-1840	-674	1895	
	12457.8	90.00	179.68	10700	-1940	-673	1995	
	12557.8	90.00	179.68	10700	-2040	-673	2094	
	12657.8	90.00	179.68	10700	-2140	-672	2194	
	12757.8	90.00	179.68	10700	-2240	-672	2293	
	12857.8	90.00	179.68	10700	-2340	-671	2393	
	12957.8	90.00	179.68	10700	-2440	-671	2492	
	13057.8	90.00	179.68	10700	-2540	-670	2592	
	13157.8	90.00	179.68	10700	-2640	-669	2691	
	13257.8	90.00	179.68	10700	-2740	-669	2791	
TD	17397.5	90.00	179.68	10700	-6880	-646	6910	



multi-bowl wellhead

NOTE: THIS DRAWING IS NOT TO SCALE. THE DIMENSIONS REFLECTED ON THIS DRAWING ARE ESTIMATED DIMENSIONS AND ARE FOR REFERENCE ONLY.



Weatherford

© 2014 Weatherford All rights reserved

Customer: RKI EXPLORATION & PRODUCTION LLC	Project No.: 103983	Quote No.: 220542
Project Name: PERMIAN BASIN-LOVING COUNTY-WFT-MBU SYSTEM	Date: 06-04-2014	Drawn By: RL

RKI Exploration and Production
3817 N. W. Expressway, Suite 950
Oklahoma City, OK. 73112

Closed Loop System

Design Plan

Equipment List

- 2 – 414 Swaco Centrifuges
- 2 – 4 screen Mongoose shale shakers
- 2 – 250 bbl. tanks to hold fluid
- 2 – CRI Bins with track system
- 2 – 500 bbl. frac tanks for fresh water
- 2 – 500 bbl. frac tanks for brine water

Operation and Maintenance

- Closed Loop equipment will be inspected daily by each tour and any necessary maintenance performed
- Any leak in system will be repaired and/or contained immediately
- OCD notified within 48 hours
- Remediation process started

Closure Plan

During drilling operations, all liquids, drilling fluids and cuttings will be hauled off via CRI (Controlled Recovery Incorporated). Permit #: R-9166.

Plat for Closed Loop System

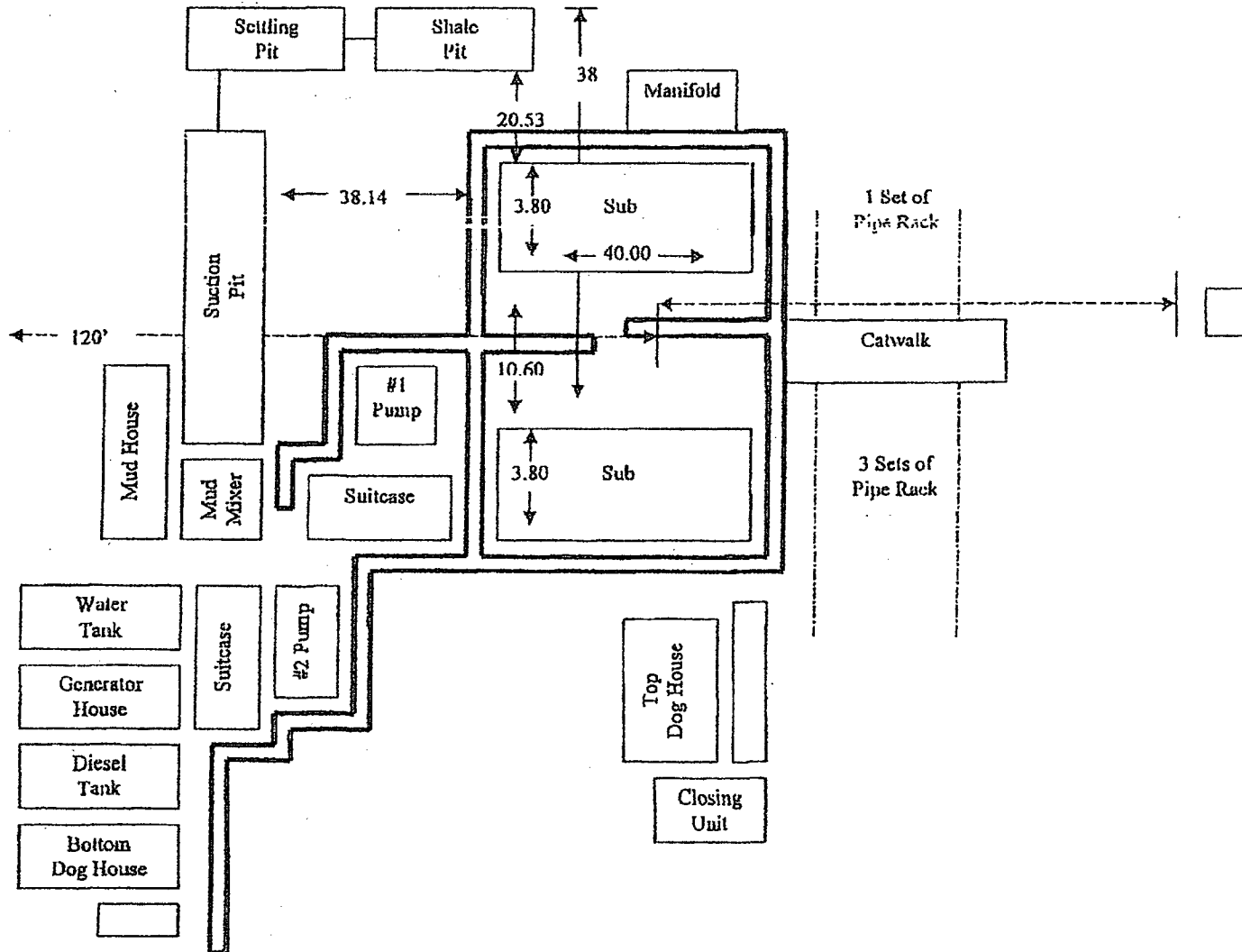
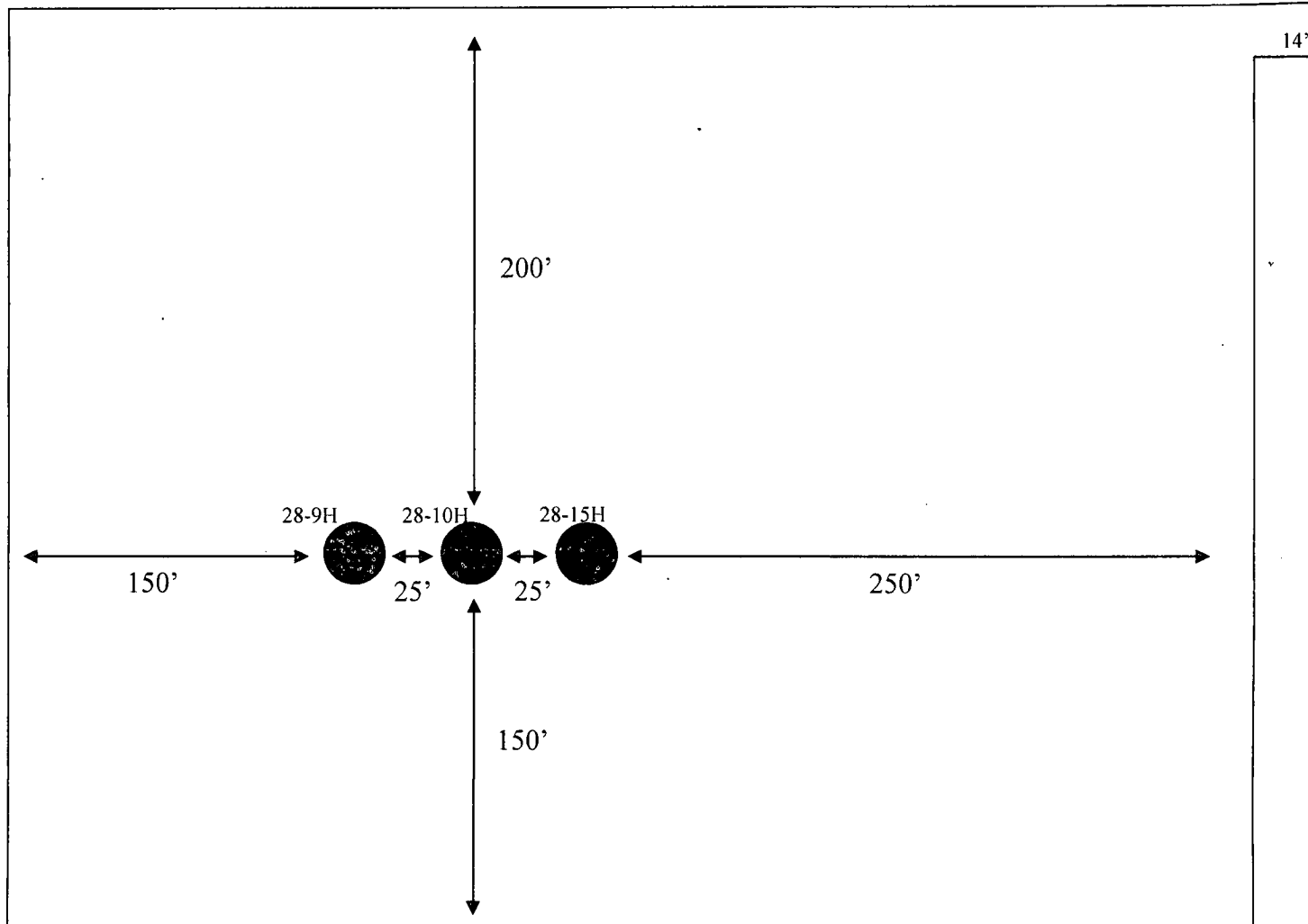


EXHIBIT D

Rig Plat Only
RDX FED COM 28-9H, 28-10H & 28-15H
V-DOOR WEST



SURFACE USE PLAN

RKI Exploration & Production, LLC
RDX FEDERAL COM 28-9H
SHL: 360' FNL & 1345' FWL
Section 28, T. 26 S., R. 30 E.
BHL: 230' FSL & 660' FWL
Section 33, T. 26 S., R. 30 E
Eddy County, New Mexico

NM OIL CONSERVATION
ARTESIA DISTRICT
JUL 21 2015
RECEIVED

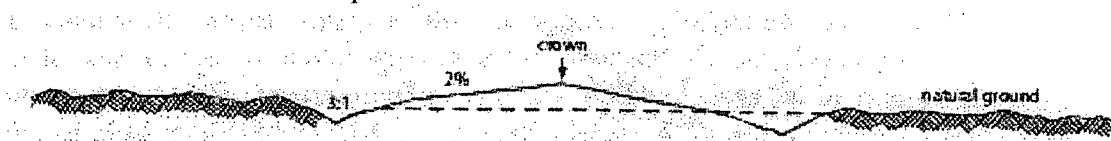
This plan is submitted with form 3160-3, Application for Permit to Drill, covering the above described well. The purpose of this plan is to describe the location of the proposed well, the proposed construction activities and operations plan, the magnitude of the surface disturbance involved and the procedures to be followed in rehabilitating the surface after completion of the operations, so that a complete appraisal can be made of the environmental effect associated with the operations.

1. EXISTING ROADS:

- A. DIRECTIONS: Go south of Carlsbad, NM, on Highway 285, for 30 miles. Turn east onto the Longhorn road (County Road 725) for 12.6 miles. Turn east on lease road for 2.2 miles. Turn south 1/4 mile, then east for 3/4 mile, then south for 1.50 miles, then 0.50 miles west. All existing roads are either paved or a caliche lease road.
- B. See attached plats and maps provided by WTC Surveys.
- C. The access routes from Eddy County Road 725 to the well location is depicted on **Exhibit A**. The route highlighted in red has been authorized under a ROW permit.
- D. Existing roads on the access route will be improved and maintained to the standard set forth in Section 2 of this Surface Use Plan of Operations.
- E. A right-of-way (ROW) was obtained in September of 2010 to access this well and other leases within the RDX and Ross Draw Unit field.

2. NEW OR RECONSTRUCTED ACCESS ROADS:

- A. No new access is required due to location being adjacent to the existing lease road to the RDX Fed Com 28-2H, 3H & 11 well pad.
- B. The maximum width of the driving surface will be 14 feet. The road will be crowned and ditched with a 2% slope from the tip of the crown to the edge of the driving surface. The ditches will be 1 foot deep with 3:1 slopes. The driving surface will be made of 6" rolled and compacted caliche.



Level Ground Section

- C. Surface material will be native caliche. The average grade of the entire road will be approximately 3%.
- D. Fence Cuts: No
- E. Cattle guards: No

- F. Turnouts: No
- G. Culverts: No
- H. Cuts and Fills: Not significant
- I. Approximately 6 inches of topsoil (root zone) will be stripped from the proposed access road prior to any further construction activity. The topsoil that was stripped will be spread along the edge of the road and within the ditch. The topsoil will be seeded with the proper seed mix designated by the BLM.
- J. The access road will be constructed and maintained as necessary to prevent soil erosion and accommodate all-weather traffic. The road will be crowned and ditched with water turnouts installed as necessary to provide for proper drainage along the access road route.
- K. The access road and associated drainage structures will be constructed and maintained in accordance with road guidelines contained in the joint BLM/USFS publication: Surface Operating Standards for Oil and Gas Exploration and Development, The Gold Book, Fourth Edition and/or BLM Manual Section 9113 concerning road construction standards on projects subject to federal jurisdiction.

3. LOCATION OF EXISTING WELLS:

See attached map (**Exhibit B**) showing all wells within a one-mile radius.

4. LOCATION OF EXISTING AND/OR PROPOSED FACILITIES:

- A. In the event the well is found productive, a TANK BATTERY, will be installed on the East portion of the pad (**EXHIBIT C**). A 12.5 kv overhead electric line (one pole) will be installed. A buried 6" gas pipeline (250 psi) and surface 4" poly SWD line (90 psi) will be installed to the Lateral E existing line system at the north edge of the proposed pad (**SEE EXHIBIT E**).
- B. All permanent (on site six months or longer) aboveground structures constructed or installed on location and not subject to safety requirements will be painted to BLM specifications.
- C. Containment berms will be constructed completely around production facilities designed to hold fluids. The containment berms will be constructed or compacted subsoil, be sufficiently impervious, hold 1 ½ times the capacity of the largest tank and away from cut or fill areas.

5. LOCATION AND TYPE OF WATER SUPPLY:

The well will be drilled using a combination of water mud systems as outlined in the Drilling Program. The water will be obtained from commercial water stations in the area and hauled to the location by transport truck using the existing and proposed roads shown in the attached survey plats. If a commercial water well is nearby, a temporary, surface poly line, will be laid along existing roads or other ROW easements and the water pumped to the well. No water well will be drilled on the location.

6. SOURCE OF CONSTRUCTION MATERIALS:

Any construction material that may be required for surfacing of the drill pad and access road will be from a contractor having a permitted source of materials within the general area. All roads will be constructed of 6" rolled and compacted caliche.

7. METHODS OF HANDLING WASTE DISPOSAL:

- A. The well will be drilled utilizing a closed loop mud system. Drill cuttings will be held in roll-off style mud boxes and taken to an NMOCD approved disposal site.
- B. Drilling fluids will be contained in steel mud pits.

- C. Water produced from the well during completion will be held temporarily in steel tanks and then taken to an NMOCD approved commercial disposal facility.
- D. Oil produced during operations will be stored in tanks until sold.
- E. Portable, self-contained chemical toilets will be provided for human waste disposal. Upon completion of operations, or as required, the toilet holding tanks will be pumped and the contents thereof disposed of in an approved sewage disposal facility. All state and local laws and regulations pertaining to disposal of human and solid waste will be complied with. This equipment will be properly maintained during the drilling and completion operations and will be removed when all operations are complete.
- F. All trash, junk, and other waste materials will be contained in trash cages or bins to prevent scattering and will be removed and deposited in an approved sanitary landfill. Immediately after drilling all debris and other waste materials on and around the well location, not contained in the trash cage will be cleaned up and removed from the location. No potentially adverse materials or substances will be left on the location.

8. ANCILLARY FACILITIES:

No campsite, airstrip, or other facilities will be built as a result of the operation of this well. No staging areas are needed.

9. WELL SITE LAYOUT:

- A. **Exhibit D** shows the dimensions of the proposed well pad.
- B. The proposed 3 well pad (RDX Fed Com 28-9H, 10H, & 15H) size will be 450' x 350' pad size (**See Exhibit D**). There will be no reserve pit due to the well being drilled utilizing a closed loop mud system. The closed loop system will meet the NMOCD requirements 19.15.17 .
- C. The **Exhibit D**, shows how the wells will be turned to a V-Door West.
- D. A 600' x 600' area has been staked and flagged.
- E. All equipment and vehicles will be confined to the approved disturbed areas of this APD (i.e., access road, well pad, and topsoil storage areas)

10. PLANS FOR SURFACE RECLAMATION:

- A. After concluding the drilling and/or completion operations, if the well is found non-commercial, all the equipment will be removed, the surface material, caliche, will be removed from the well pad and road and transported to the original caliche pit or used for other roads. The original stock piled top soil will be returned to the pad and contoured, as close as possible, to the original topography. The access road will have the caliche removed and the road ripped, barricaded and seeded as directed by the BLM.
- B. If the well is a producer, the portions of the location not essential to production facilities or space required for workover operations, will be reclaimed and seeded as per BLM requirements. (**SEE EXHIBIT C FOR INTERIM RECLAMATION PLAT FOR THIS WELL**)

C. Reclamation Performance Standards

The following reclamation performance standards will be met:

Interim Reclamation – Includes disturbed areas that may be redisturbed during operations and will be redisturbed at final reclamation to achieve restoration of the original landform and a natural vegetative community.

- Disturbed areas not needed for active, long-term production operations or vehicle travel will be recontoured, protected from erosion, and revegetated with a self-sustaining, vigorous, diverse, native (or as otherwise approved) plant community sufficient to minimize visual

impacts, provide forage, stabilize soils, and impede the invasion of noxious, invasive, and non-native weeds.

Final Reclamation – Includes disturbed areas where the original landform and a natural vegetative community will be restored and it is anticipated the site will not be redisturbed for future development.

- The original landform will be restored for all disturbed areas including well pads, production facilities, roads, pipelines, and utility corridors.
- A self-sustaining, vigorous, diverse, native (or otherwise approved) plant community will be established on the site, with a density sufficient to control erosion and invasion by non-native plants and to re-establish wildlife habitat or forage production. At a minimum, the established plant community will consist of species included in the seed mix and/or desirable species occurring in the surrounding natural vegetation.
- Erosion features are equal to or less than surrounding area and erosion control is sufficient so that water naturally infiltrates into the soil and gully, headcutting, slumping, and deep or excessive rills (greater than 3 inches) are not observed.
- The site will be free of State- or county-listed noxious weeds, oil field debris and equipment, and contaminated soil. Invasive and non-native weeds are controlled.

D. Reclamation Actions

Earthwork for interim and final reclamation will be completed within 6 months of well completion or plugging unless a delay is approved in writing by the BLM authorized officer.

The following minimum reclamation actions will be taken to ensure that the reclamation objectives and standards are met. It may be necessary to take additional reclamation actions beyond the minimum in order to achieve the Reclamation Standards.

Reclamation – General

Notification:

- The BLM will be notified at least 3 days prior to commencement of any reclamation operations.

Housekeeping:

- Within 30 days of well completion, the well location and surrounding areas(s) will be cleared of, and maintained free of, all debris, materials, trash, and equipment not required for production.
- No hazardous substances, trash, or litter will be buried or placed in pits.

Topsoil Management:

- Operations will disturb the minimum amount of surface area necessary to conduct safe and efficient operations.
- Topsoil depth is defined as the top layer of soil that contains 80% of the roots. In areas to be heavily disturbed, the topsoil will be stripped and stockpiled around the perimeter of the well location and along the perimeter of the access road to control run-on and run-off, to keep topsoil viable, and to make redistribution of topsoil more efficient during interim reclamation. Stockpiled

topsoil will include vegetative material. Topsoil will be clearly segregated and stored separately from subsoils.

- Salvaging and spreading topsoil will not be performed when the ground or topsoil is frozen or too wet to adequately support construction equipment or so dry that dust clouds greater than 30 feet tall are created. If such equipment creates ruts in excess of four (4) inches deep, the soil will be deemed too wet.
- No major depressions will be left that would trap water and cause ponding unless the intended purpose is to trap runoff and sediment.

Seeding:

- Seedbed Preparation. Initial seedbed preparation will consist of recontouring to the appropriate interim or final reclamation standard. All compacted areas to be seeded will be ripped to a minimum depth of 18 inches with a minimum furrow spacing of 2 feet, followed by recontouring the surface and then evenly spreading the stockpiled topsoil. Prior to seeding, the seedbed will be scarified to a depth of no less than 4 – 6 inches. If the site is to be broadcast seeded, the surface will be left rough enough to trap seed and snow, control erosion, and increase water infiltration.
- If broadcast seeding is to be used and is delayed, final seedbed preparation will consist of contour cultivating to a depth of 4 to 6 inches within 24 hours prior to seeding, dozer tracking, or other imprinting in order to break the soil crust and create seed germination micro-sites.
- Seed Application. Seeding will be conducted no more than two weeks following completion of final seedbed preparation. A certified weed-free seed mix designed by the BLM to meet reclamation standards will be used.
- If the site is harrowed or dragged, seed will be covered by no more than 0.25 inch of soil.

11. SURFACE OWNERSHIP:

- A. The surface is owned by the U. S. Government and is administered by the Bureau of Land Management. The surface is multiple use with the primary uses of the region for the grazing of livestock and the production of oil and gas.

12. OTHER INFORMATION:

- A. The area surrounding the well site is in a gentle sloped, shallow sandy loam, rolling hills type area. The vegetation consists of Mesquite, Creosote, White-Thorn Acacia with three-awns and some dropseed species.
- B. There is no permanent or live water in the immediate area.
- C. There are no dwellings within 2 miles of this location.
- D. RKI is a participant with the Permian Basin MOA and a check for \$1552 is attached with this application.

13. BOND COVERAGE:

Bond Coverage is Nationwide; Bond Number NMB-000460.

OPERATORS REPRESENTATIVE:

The RKI Exploration and Production, LLC representatives responsible for ensuring compliance of the surface use plan are listed below:

Surface:

Barry W. Hunt – Permitting Agent
1403 Springs Farm Place
Carlsbad, NM 88220
(575) 885-1417 (Home)
(575) 361-4078 (Cell)

Drilling & Production:

Ken Fairchild – RKI Exploration and Production, LLC.
210 Park Avenue, Suite 900
Oklahoma City, Ok. 73102
(405) 996-5764 (Office)
(469) 693-6051 (Cell)

ON-SITE PERFORMED ON 8/20/14 RESULTED IN PROPOSED LOCATION BEING MOVED 185 FT. SOUTH, SO AS TO AVOID LATERAL E PIPELINE CORRIDOR AND 50 FT. EAST, TO ALLOW FOR ADDITIONAL ROOM FROM THE RDX FED COM 28-2H, 3H, 11 WELL PAD. IT WAS AGREED TO TURN THE LOCATION TO A V-DOOR WEST, PLACE THE TOP SOIL TO THE WEST, PLACE THE BATTERY TO THE EAST. IT WAS FURTHER AGREED TO RECLAIM THE SOUTH PORTION OF THE PAD.

PRESENT AT ON-SITE:

**BARRY HUNT – PERMITTING AGENT FOR RKI EXPLORATION & PRODUCTION
INDRA DAHAL – BLM
BECKIE HILL - BOONE ARCHAEOLOGICAL SERVICES
WTC SURVEYORS**

RKI Exploration & Production LLC

3817 NW Expressway, Suite 950, Oklahoma City, OK 73112
405-949-2221 Fax 405-949-2223

June 25th, 2012

To Whom It May Concern:

Please be advised that Mr. Barry Hunt has been retained by RKI Exploration & Production to sign as our agent on Application for Permit to Drill (APD) as well as Right of Way applications within the States of New Mexico and Texas.

If you have any questions or require additional information, please feel free to contact me at (405) 996-5771.

Sincerely,

A handwritten signature in cursive script, appearing to read "Charles K. Ahn".

Charles K. Ahn
EH&S/Regulatory Manager

**PECOS DISTRICT
CONDITIONS OF APPROVAL**

NM OIL CONSERVATION
ARTESIA DISTRICT
JUL 21 2015

RECEIVED

OPERATOR'S NAME:	RKI Exploration & Production LLC
LEASE NO.:	NM35607
WELL NAME & NO.:	RDX Federal Com 28-9H
SURFACE HOLE FOOTAGE:	360'/N & 1345'/W
BOTTOM HOLE FOOTAGE:	230'/S & 660'/W
LOCATION:	Section 28, T. 26 S., R. 30 E., NMPM
COUNTY:	Eddy County, New Mexico

TABLE OF CONTENTS

Standard Conditions of Approval (COA) apply to this APD. If any deviations to these standards exist or special COAs are required, the section with the deviation or requirement will be checked below.

- ☐ **General Provisions**
- ☐ **Permit Expiration**
- ☐ **Archaeology, Paleontology, and Historical Sites**
- ☐ **Noxious Weeds**
- ☒ **Special Requirements**
 - Cave/Karst
 - Phantom Bank Heronries
 - Cultural Resources
 - Communitization Agreement
- ☐ **Construction**
 - Notification
 - Topsoil
 - Closed Loop System
 - Federal Mineral Material Pits
 - Well Pads
 - Roads
- ☐ **Road Section Diagram**
- ☒ **Drilling**
 - Cement Requirements
 - High Cave/Karst
 - Logging Requirements
 - Waste Material and Fluids
- ☒ **Production (Post Drilling)**
 - Well Structures & Facilities
 - Pipelines
 - Electric Lines
- ☐ **Interim Reclamation**
- ☐ **Final Abandonment & Reclamation**

I. GENERAL PROVISIONS

The approval of the Application For Permit To Drill (APD) is in compliance with all applicable laws and regulations: 43 Code of Federal Regulations 3160, the lease terms, Onshore Oil and Gas Orders, Notices To Lessees, New Mexico Oil Conservation Division (NMOCD) Rules, National Historical Preservation Act As Amended, and instructions and orders of the Authorized Officer. Any request for a variance shall be submitted to the Authorized Officer on Form 3160-5, Sundry Notices and Report on Wells.

II. PERMIT EXPIRATION

If the permit terminates prior to drilling and drilling cannot be commenced within 60 days after expiration, an operator is required to submit Form 3160-5, Sundry Notices and Reports on Wells, requesting surface reclamation requirements for any surface disturbance. However, if the operator will be able to initiate drilling within 60 days after the expiration of the permit, the operator must have set the conductor pipe in order to allow for an extension of 60 days beyond the expiration date of the APD. (Filing of a Sundry Notice is required for this 60 day extension.)

III. ARCHAEOLOGICAL, PALEONTOLOGY & HISTORICAL SITES

Any cultural and/or paleontological resource discovered by the operator or by any person working on the operator's behalf shall immediately report such findings to the Authorized Officer. The operator is fully accountable for the actions of their contractors and subcontractors. The operator shall suspend all operations in the immediate area of such discovery until written authorization to proceed is issued by the Authorized Officer. An evaluation of the discovery shall be made by the Authorized Officer to determine the appropriate actions that shall be required to prevent the loss of significant cultural or scientific values of the discovery. The operator shall be held responsible for the cost of the proper mitigation measures that the Authorized Officer assesses after consultation with the operator on the evaluation and decisions of the discovery. Any unauthorized collection or disturbance of cultural or paleontological resources may result in a shutdown order by the Authorized Officer.

IV. NOXIOUS WEEDS

The operator shall be held responsible if noxious weeds become established within the areas of operations. Weed control shall be required on the disturbed land where noxious weeds exist, which includes the roads, pads, associated pipeline corridor, and adjacent land affected by the establishment of weeds due to this action. The operator shall consult with the Authorized Officer for acceptable weed control methods, which include following EPA and BLM requirements and policies.

V. SPECIAL REQUIREMENT(S)

Cave and Karst

** Depending on location, additional Drilling, Casing, and Cementing procedures may be required by engineering to protect critical karst groundwater recharge areas.

Cave/Karst Surface Mitigation

The following stipulations will be applied to minimize impacts during construction, drilling and production.

Construction:

In the advent that any underground voids are opened up during construction activities, construction activities will be halted and the BLM will be notified immediately.

No Blasting:

No blasting will be utilized for pad construction. The pad will be constructed and leveled by adding the necessary fill and caliche.

Pad Berming:

The entire perimeter of the well pad will be bermed to prevent oil, salt, and other chemical contaminants from leaving the well pad.

- The compacted berm shall be constructed at a minimum of 12 inches high with impermeable mineral material (e.g. caliche).
- No water flow from the uphill side(s) of the pad shall be allowed to enter the well pad.
- The topsoil stockpile shall be located outside the bermed well pad.
- Topsoil, either from the well pad or surrounding area, shall not be used to construct the berm.
- No storm drains, tubing or openings shall be placed in the berm.
- If fluid collects within the bermed area, the fluid must be vacuumed into a safe container and disposed of properly at a state approved facility.
- The integrity of the berm shall be maintained around the surfaced pad throughout the life of the well and around the downsized pad after interim reclamation has been completed.

- Any access road entering the well pad shall be constructed so that the integrity of the berm height surrounding the well pad is not compromised. (Any access road crossing the berm cannot be lower than the berm height.)

Tank Battery Liners and Berms:

Tank battery locations and all facilities will be lined and bermed. A 20 mil permanent liner will be installed with a 4 oz. felt backing to prevent tears or punctures. Tank battery berms must be large enough to contain 1 ½ times the content of the largest tank.

Leak Detection System:

A method of detecting leaks is required. The method could incorporate gauges to measure loss, siting valves and lines so they can be visually inspected, or installing electronic sensors to alarm when a leak is present. Leak detection plan will be submitted to BLM for approval.

Automatic Shut-off Systems:

Automatic shut off, check valves, or similar systems will be installed for pipelines and tanks to minimize the effects of catastrophic line failures used in production or drilling.

Cave/Karst Subsurface Mitigation

The following stipulations will be applied to protect cave/karst and ground water concerns:

Rotary Drilling with Fresh Water:

Fresh water will be used as a circulating medium in zones where caves or karst features are expected. SEE ALSO: Drilling COAs for this well.

Directional Drilling:

Kick off for directional drilling will occur at least 100 feet below the bottom of the cave occurrence zone. SEE ALSO: Drilling COAs for this well.

Lost Circulation:

ALL lost circulation zones from the surface to the base of the cave occurrence zone will be logged and reported in the drilling report.

Regardless of the type of drilling machinery used, if a void of four feet or more and circulation losses greater than 70 percent occur simultaneously while drilling in any cave-bearing zone, the BLM will be notified immediately by the operator. The BLM will assess the situation and work with the operator on corrective actions to resolve the problem.

Abandonment Cementing:

Upon well abandonment in high cave karst areas additional plugging conditions of approval may be required. The BLM will assess the situation and work with the operator to ensure proper plugging of the wellbore.

Pressure Testing:

Annual pressure monitoring will be performed by the operator on all casing annuli and reported in a sundry notice. If the test results indicated a casing failure has occurred, remedial action will be undertaken to correct the problem to the BLM's approval.

Phantom Bank Heronries

Surface disturbance will not be allowed within up to 200 meters of active heronries or by delaying activity for up to 120 days, or a combination of both.

Exhaust noise from pump jack engines must be muffled or otherwise controlled so as not to exceed 75 db measured at 30 ft. from the source of the noise.

Cultural Resources

Historic properties in the vicinity of this project are protected by federal law. In order to ensure that they are not damaged or destroyed by construction activities, the project proponent and construction supervisors shall ensure that the following stipulations are implemented.

Professional Archaeological Monitoring:

Contact your project archaeologist, or BLM's Cultural Resources Section at (575) 234-5986 or 5917 for assistance. These stipulations must be given to your monitor at least 5 days prior to the start of construction. No construction, including vegetation removal or other site prep may begin prior to the arrival of the monitor.

Mitigation Measures:

The following sites will require monitoring of all ground disturbing activities within 100 feet: LA-49811

Documentation:

Submit a brief monitoring report within 30 days of completion of monitoring. Consult with BLM Archaeologists on potential site update requirements.

Other:

Site Protection and Employee Education: It is the responsibility of the project proponent and his construction supervisor to inform all employees and subcontractors that cultural and archaeological sites are to be avoided by all personnel, vehicles, and equipment; and that it is illegal to collect, damage, or disturb cultural resources on Public lands.

For assistance, contact BLM Cultural Resources:

Bruce Boeke (575) 234-5917 Stacy Galassini (575) 234-5986
Jessica Han (575) 234-5555 Hila Nelson (575) 234-2236
Martin Stein (575) 234-5967

Communitization Agreement

A Communitization Agreement covering the acreage dedicated to this well must be filed for approval with the BLM. The effective date of the agreement shall be prior to any sales. In addition, the well sign shall include the surface and bottom hole lease numbers. When the Communitization Agreement number is known, it shall also be on the sign.

VI. CONSTRUCTION

A. NOTIFICATION

The BLM shall administer compliance and monitor construction of the access road and well pad. Notify the Carlsbad Field Office at (575) 234-5909 at least 3 working days prior to commencing construction of the access road and/or well pad.

When construction operations are being conducted on this well, the operator shall have the approved APD and Conditions of Approval (COA) on the well site and they shall be made available upon request by the Authorized Officer.

B. TOPSOIL

The operator shall strip the top portion of the soil (root zone) from the entire well pad area and stockpile the topsoil along the edge of the well pad as depicted in the APD. The root zone is typically six (6) inches in depth. All the stockpiled topsoil will be redistributed over the interim reclamation areas. Topsoil shall not be used for berming the pad or facilities. For final reclamation, the topsoil shall be spread over the entire pad area for seeding preparation.

Other subsoil (below six inches) stockpiles must be completely segregated from the topsoil stockpile. Large rocks or subsoil clods (not evident in the surrounding terrain) must be buried within the approved area for interim and final reclamation.

C. CLOSED LOOP SYSTEM

Tanks are required for drilling operations: No Pits.

The operator shall properly dispose of drilling contents at an authorized disposal site.

D. FEDERAL MINERAL MATERIALS PIT

Payment shall be made to the BLM prior to removal of any federal mineral materials. Call the Carlsbad Field Office at (575) 234-5972.

E. WELL PAD SURFACING

Surfacing of the well pad is not required.

If the operator elects to surface the well pad, the surfacing material may be required to be removed at the time of reclamation. The well pad shall be constructed in a manner which creates the smallest possible surface disturbance, consistent with safety and operational needs.

F. EXCLOSURE FENCING (CELLARS & PITS)

Exclosure Fencing

The operator will install and maintain exclosure fencing for all open well cellars to prevent access to public, livestock, and large forms of wildlife before and after drilling operations until the pit is free of fluids and the operator initiates backfilling. (For examples of exclosure fencing design, refer to BLM's Oil and Gas Gold Book, Exclosure Fence Illustrations, Figure 1, Page 18.)

G. ON LEASE ACCESS ROADS**Road Width**

The access road shall have a driving surface that creates the smallest possible surface disturbance and does not exceed fourteen (14) feet in width. The maximum width of surface disturbance, when constructing the access road, shall not exceed twenty-five (25) feet.

Surfacing

Surfacing material is not required on the new access road driving surface. If the operator elects to surface the new access road or pad, the surfacing material may be required to be removed at the time of reclamation.

Where possible, no improvements should be made on the unsurfaced access road other than to remove vegetation as necessary, road irregularities, safety issues, or to fill low areas that may sustain standing water.

The Authorized Officer reserves the right to require surfacing of any portion of the access road at any time deemed necessary. Surfacing may be required in the event the road deteriorates, erodes, road traffic increases, or it is determined to be beneficial for future field development. The surfacing depth and type of material will be determined at the time of notification.

Crowning

Crowning shall be done on the access road driving surface. The road crown shall have a grade of approximately 2% (i.e., a 1" crown on a 14' wide road). The road shall conform to Figure 1; cross section and plans for typical road construction.

Ditching

Ditching shall be required on both sides of the road.

Turnouts

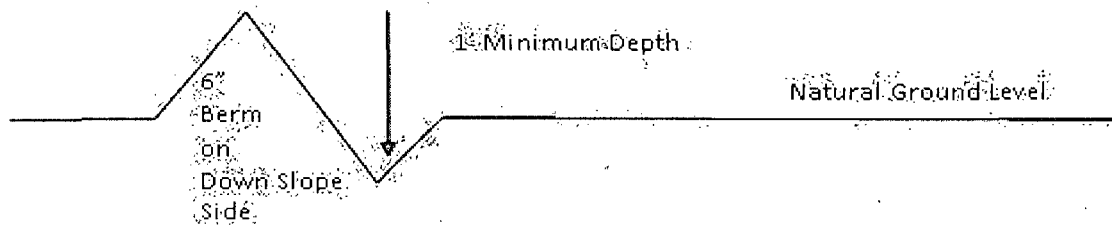
Vehicle turnouts shall be constructed on the road. Turnouts shall be intervisible with interval spacing distance less than 1000 feet. Turnouts shall conform to Figure 1; cross section and plans for typical road construction.

Drainage

Drainage control systems shall be constructed on the entire length of road (e.g. ditches, sidehill out sloping and insloping, lead-off ditches, culvert installation, and low water crossings).

A typical lead-off ditch has a minimum depth of 1 foot below and a berm of 6 inches above natural ground level. The berm shall be on the down-slope side of the lead-off ditch.

Cross Section of a Typical Lead-off Ditch



All lead-off ditches shall be graded to drain water with a 1 percent minimum to 3 percent maximum ditch slope. The spacing interval are variable for lead-off ditches and shall be determined according to the formula for spacing intervals of lead-off ditches, but may be amended depending upon existing soil types and centerline road slope (in %);

Formula for Spacing Interval of Lead-off Ditches

Example - On a 4% road slope that is 400 feet long, the water flow shall drain water into a lead-off ditch. Spacing interval shall be determined by the following formula:

$$400 \text{ foot road with } 4\% \text{ road slope: } \frac{400'}{4\%} + 100' = 200' \text{ lead-off ditch interval}$$

Cattleguards

An appropriately sized cattleguard sufficient to carry out the project shall be installed and maintained at fence/road crossings. Any existing cattleguards on the access road route shall be repaired or replaced if they are damaged or have deteriorated beyond practical use. The operator shall be responsible for the condition of the existing cattleguards that are in place and are utilized during lease operations.

Fence Requirement

Where entry is granted across a fence line, the fence shall be braced and tied off on both sides of the passageway prior to cutting. The operator shall notify the private surface landowner or the grazing allotment holder prior to crossing any fences.

Public Access

Public access on this road shall not be restricted by the operator without specific written approval granted by the Authorized Officer.

Construction Steps

1. Salvage topsoil
2. Construct road

3. Redistribute topsoil
4. Revegetate slopes

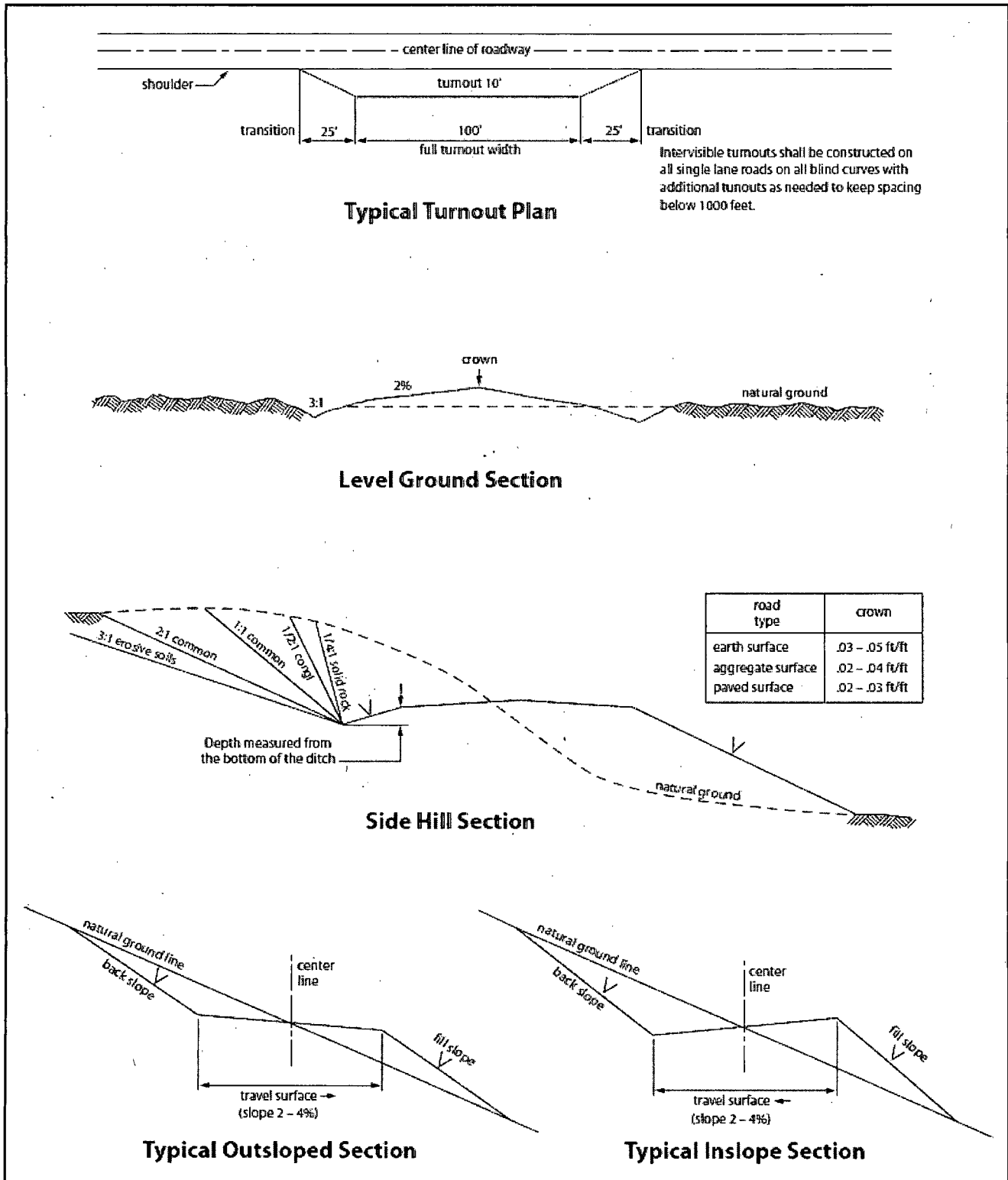


Figure 1. Cross-sections and plans for typical road sections representative of BLM resource or FS local and higher-class roads.

VII. DRILLING

A. DRILLING OPERATIONS REQUIREMENTS

The BLM is to be notified in advance for a representative to witness:

- a. Spudding well (minimum of 24 hours)
- b. Setting and/or Cementing of all casing strings (minimum of 4 hours)
- c. BOPE tests (minimum of 4 hours)

☒ **Eddy County**

Call the Carlsbad Field Office, 620 East Greene St., Carlsbad, NM 88220,
(575) 361-2822

1. **Although Hydrogen Sulfide has not been reported in the area, it is always a potential hazard. If Hydrogen Sulfide is encountered, report measured amounts and formations to the BLM.**
2. Unless the production casing has been run and cemented or the well has been properly plugged, the drilling rig shall not be removed from over the hole without prior approval. **If the drilling rig is removed without approval – an Incident of Non-Compliance will be written and will be a “Major” violation.**
3. Floor controls are required for 3M or Greater systems. These controls will be on the rig floor, unobstructed, readily accessible to the driller and will be operational at all times during drilling and/or completion activities. Rig floor is defined as the area immediately around the rotary table; the area immediately above the substructure on which the draw works is located, this does not include the dog house or stairway area.
4. **The record of the drilling rate along with the GR/N well log run from TD to surface (horizontal well – vertical portion of hole) shall be submitted to the BLM office as well as all other logs run on the borehole 30 days from completion. If available, a digital copy of the logs is to be submitted in addition to the paper copies. The Rustler top and top and bottom of Salt are to be recorded on the Completion Report.**

B. CASING

Changes to the approved APD casing program need prior approval if the items substituted are of lesser grade or different casing size. The Operator can exchange the components of the proposal with that of superior strength (i.e. changing from J-55 to N-80, or from 36# to 40#). Changes to the approved cement program need prior approval if the altered cement plan has less volume or strength or if the changes are substantial (i.e. Multistage tool, ECP, etc.).

Centralizers required on surface casing per Onshore Order 2.III.B.1.f.

Wait on cement (WOC) time prior to drilling out for a primary cement job will be a minimum 18 hours for a water basin, 24 hours in the potash area, or 500 pounds compressive strength, whichever is greater for all casing strings. DURING THIS WOC TIME, NO DRILL PIPE, ETC. SHALL BE RUN IN THE HOLE. Provide compressive strengths including hours to reach required 500 pounds compressive strength prior to cementing each casing string. IF OPERATOR DOES NOT HAVE THE WELL SPECIFIC CEMENT DETAILS ONSITE PRIOR TO PUMPING THE CEMENT FOR EACH CASING STRING, THE WOC WILL BE 30 HOURS. See individual casing strings for details regarding lead cement slurry requirements.

No pea gravel permitted for remedial or fall back remedial without prior authorization from the BLM engineer.

High Cave/Karst A MINIMUM OF TWO CASING STRINGS CEMENTED TO SURFACE IS REQUIRED IN HIGH CAVE/KARST AREAS. THE CEMENT MUST BE IN A SOLID SHEATH. THEREFORE, ONE INCH OPERATIONS ARE NOT SUFFICIENT TO PROTECT CAVE KARST RESOURCES. A CASING DESIGN THAT HAS A ONE INCH JOB PERFORMED DOES NOT COUNT AS A SOLID SHEATH.

Possibility of water flows in the Salado and Delaware.

Possibility of lost circulation in the Rustler and Delaware.

Possible high pressure in the 3rd Bone Spring sand and Wolfcamp

1. The 13-3/8 inch surface casing shall be set at approximately **715 feet (in a competent bed below the Magenta Dolomite, which is a Member of the Rustler, and if salt is encountered, set casing at least 25 feet above the salt)** and cemented to the surface.
 - a. If cement does not circulate to the surface, the appropriate BLM office shall be notified and a temperature survey utilizing an electronic type temperature survey with surface log readout will be used or a cement bond log shall be run to verify the top of the cement. Temperature survey will be run a minimum of six hours after pumping cement and ideally between 8-10 hours after completing the cement job.
 - b. **Wait on cement (WOC) time for a primary cement job is to include the lead cement slurry.**
 - c. Wait on cement (WOC) time for a remedial job will be a minimum of 4 hours after bringing cement to surface or 500 pounds compressive strength, whichever is greater.
 - d. If cement falls back, remedial cementing will be done prior to drilling out that string.

Formation below the 13-3/8" shoe to be tested according to Onshore Order 2.III.B.1.i. Test to be done as a mud equivalency test using the mud weight necessary for the pore pressure of the formation below the shoe and the mud weight for the bottom of the hole. Report results to BLM office.

2. The minimum required fill of cement behind the 9-5/8 inch intermediate casing is:

Operator has proposed DV tool at depth of 5500'. Operator is to submit sundry if DV tool depth varies by more than 100' from approved depth.

a. First stage to DV tool:

☒ Cement to circulate. If cement does not circulate, contact the appropriate BLM office before proceeding with second stage cement job. Operator should have plans as to how they will achieve approved top of cement on the next stage.

☒ Cement to surface. If cement does not circulate see B.1.a, c-d above. **Wait on cement (WOC) time for a primary cement job is to include the lead cement slurry due to cave/karst.**

Formation below the 9-5/8" shoe to be tested according to Onshore Order 2.III.B.1.i. Test to be done as a mud equivalency test using the mud weight necessary for the pore pressure of the formation below the shoe (not the mud weight required to prevent dissolving the salt formation) and the mud weight for the bottom of the hole. Report results to BLM office.

3. The minimum required fill of cement behind the 5-1/2 inch production casing is:

☒ Cement should tie-back at least 200 feet into previous casing string. Operator shall provide method of verification.

4. If hardband drill pipe is rotated inside casing, returns will be monitored for metal. If metal is found in samples, drill pipe will be pulled and rubber protectors which have a larger diameter than the tool joints of the drill pipe will be installed prior to continuing drilling operations.

C. PRESSURE CONTROL

1. All blowout preventer (BOP) and related equipment (BOPE) shall comply with well control requirements as described in Onshore Oil and Gas Order No. 2 and API RP 53 Sec. 17.

2. **Operator has proposed a multi-bowl wellhead assembly that has a weld on head with no o-ring seals. This assembly will only be tested when installed on the surface casing. Minimum working pressure of the blowout preventer (BOP) and related equipment (BOPE) required for drilling below the surface casing shoe shall be 5000 (5M) psi.**

- a. **Wellhead manufacturer is supplying the test plug/retrieval tool for the operator's third party tester to use during the BOP/BOPE test. Operator shall use the supplied test plug/retrieval tool.**
- b. **Operator shall install the wear bushing required by the wellhead manufacturer. This wear bushing shall be installed by using the test plug/retrieval tool.**
- c. **Wellhead manufacturer representative shall be on location when the intermediate casing mandrel is landed.**
- d. **Operator shall perform the intermediate casing integrity test to 70% of the casing burst. This will test the multi-bowl seals.**
- e. **If the cement does not circulate and one inch operations would have been possible with a standard wellhead, the well head shall be cut off, cementing operations performed and another wellhead installed.**

5M system requires an HCR valve, remote kill line and annular to match. The remote kill line is to be installed prior to testing the system and tested to stack pressure.

3. **The appropriate BLM office shall be notified a minimum of 4 hours in advance for a representative to witness the tests.**
 - a. **In a water basin, for all casing strings utilizing slips, these are to be set as soon as the crew and rig are ready and any fallback cement remediation has been done. The casing cut-off and BOP installation can be initiated four hours after installing the slips, which will be approximately six hours after bumping the plug. For those casing strings not using slips, the minimum wait time before cut-off is eight hours after bumping the plug. BOP/BOPE testing can begin after cut-off or once cement reaches 500 psi compressive strength (including lead when specified), whichever is greater. However, if the float does not hold, cut-off cannot be initiated until cement reaches 500 psi compressive strength (including lead when specified).**
 - b. **The tests shall be done by an independent service company utilizing a test plug **not a cup or J-packer**.**
 - c. **The test shall be run on a 5000 psi chart for a 2-3M BOP/BOP, on a 10000 psi chart for a 5M BOP/BOPE and on a 15000 psi chart for a 10M BOP/BOPE. If a linear chart is used, it shall be a one hour chart. A circular chart shall have a maximum 2 hour clock with a corresponding chart (i.e. two hour clock-two hour chart, one hour clock-one hour chart).**

- d. The results of the test shall be reported to the appropriate BLM office.
- e. All tests are required to be recorded on a calibrated test chart. **A copy of the BOP/BOPE test chart and a copy of independent service company test will be submitted to the appropriate BLM office.**
- f. The BOP/BOPE test shall include a low pressure test from 250 to 300 psi. The test will be held for a minimum of 10 minutes if test is done with a test plug and 30 minutes without a test plug. This test shall be performed prior to the test at full stack pressure.
- g. BOP/BOPE must be tested by an independent service company within 500 feet of the top of the **Wolfcamp** formation if the time between the setting of the intermediate casing and reaching this depth exceeds 20 days. This test does not exclude the test prior to drilling out the casing shoe as per Onshore Order No. 2.

D. DRILLING MUD

Mud system monitoring equipment, with derrick floor indicators and visual and audio alarms, shall be operating before drilling into the **Wolfcamp** formation, and shall be used until production casing is run and cemented.

E. DRILL STEM TEST

If drill stem tests are performed, Onshore Order 2.III.D shall be followed.

F. WASTE MATERIAL AND FLUIDS

All waste (i.e. drilling fluids, trash, salts, chemicals, sewage, gray water, etc.) created as a result of drilling operations and completion operations shall be safely contained and disposed of properly at a waste disposal facility. No waste material or fluid shall be disposed of on the well location or surrounding area.

Porto-johns and trash containers will be on-location during fracturing operations or any other crew-intensive operations.

CRW 071315

VIII. PRODUCTION (POST DRILLING)

A. WELL STRUCTURES & FACILITIES

Placement of Production Facilities

Production facilities should be placed on the well pad to allow for maximum interim recontouring and revegetation of the well location.

Exclosure Netting (Open-top Tanks)

Immediately following active drilling or completion operations, the operator will take actions necessary to prevent wildlife and livestock access, including avian wildlife, to all open-topped tanks that contain or have the potential to contain salinity sufficient to cause harm to wildlife or livestock, hydrocarbons, or Resource Conservation and Recovery Act of 1976-exempt hazardous substances. At a minimum, the operator will net, screen, or cover open-topped tanks to exclude wildlife and livestock and prevent mortality. If the operator uses netting, the operator will cover and secure the open portion of the tank to prevent wildlife entry. The operator will net, screen, or cover the tanks until the operator removes the tanks from the location or the tanks no longer contain substances that could be harmful to wildlife or livestock. Use a maximum netting mesh size of 1 ½ inches. The netting must not be in contact with fluids and must not have holes or gaps.

Chemical and Fuel Secondary Containment and Exclosure Screening

The operator will prevent all hazardous, poisonous, flammable, and toxic substances from coming into contact with soil and water. At a minimum, the operator will install and maintain an impervious secondary containment system for any tank or barrel containing hazardous, poisonous, flammable, or toxic substances sufficient to contain the contents of the tank or barrel and any drips, leaks, and anticipated precipitation. The operator will dispose of fluids within the containment system that do not meet applicable state or U. S. Environmental Protection Agency livestock water standards in accordance with state law; the operator must not drain the fluids to the soil or ground. The operator will design, construct, and maintain all secondary containment systems to prevent wildlife and livestock exposure to harmful substances. At a minimum, the operator will install effective wildlife and livestock exclosure systems such as fencing, netting, expanded metal mesh, lids, and grate covers. Use a maximum netting mesh size of 1 ½ inches.

Open-Vent Exhaust Stack Exclosures

The operator will construct, modify, equip, and maintain all open-vent exhaust stacks on production equipment to prevent birds and bats from entering, and to discourage perching, roosting, and nesting. (*Recommended exclosure structures on open-vent exhaust stacks are in the shape of a cone.*) Production equipment includes, but may not be limited to, tanks, heater-treaters, separators, dehydrators, flare stacks, in-line units, and compressor mufflers.

Containment Structures

Proposed production facilities such as storage tanks and other vessels will have a secondary containment structure that is constructed to hold the capacity of 1.5 times the

largest tank, plus freeboard to account for precipitation, unless more stringent protective requirements are deemed necessary.

Painting Requirement

All above-ground structures including meter housing that are not subject to safety requirements shall be painted a flat non-reflective paint color, **Shale Green** from the BLM Standard Environmental Color Chart (CC-001: June 2008).

B. PIPELINES

BURIED PIPELINE STIPULATIONS

A copy of the application (Grant, APD, or Sundry Notice) and attachments, including conditions of approval, survey plat and/or map, will be on location during construction. BLM personnel may request to you a copy of your permit during construction to ensure compliance with all stipulations.

Holder agrees to comply with the following stipulations to the satisfaction of the Authorized Officer:

1. The Holder shall indemnify the United States against any liability for damage to life or property arising from the occupancy or use of public lands under this grant.
2. The Holder shall comply with all applicable Federal laws and regulations existing or hereafter enacted or promulgated. In any event, the holder shall comply with the Toxic Substances Control Act of 1976 as amended, 15 USC 2601 et seq. (1982) with regards to any toxic substances that are used, generated by or stored on the right-of-way or on facilities authorized under this right-of-way grant. (See 40 CFR Part 702-799 and especially, provisions on polychlorinated biphenyls, 40 CFR 761.1-761.193.) Additionally, any release of toxic substances (leaks, spills, etc.) in excess of the reportable quantity established by 40 CFR Part 117 shall be reported as required by the Comprehensive Environmental Response, Compensation, and Liability Act, section 102b. A copy of any report required or requested by any Federal agency or State government as a result of a reportable release or spill of any toxic substances shall be furnished to the authorized officer concurrent with the filing of the reports to the involved Federal agency or State government.
3. The holder agrees to indemnify the United States against any liability arising from the release of any hazardous substance or hazardous waste (as these terms are defined in the Comprehensive Environmental Response, Compensation and Liability Act of 1980, 42 U.S.C. 9601, et seq. or the Resource Conservation and Recovery Act, 42 U.S.C. 6901, et seq.) on the Right-of-Way (unless the release or threatened release is wholly unrelated to the Right-of-Way holder's activity on the Right-of-Way), or resulting from the activity of the Right-of-Way holder on the Right-of-Way. This agreement applies without regard to whether a release is caused by the holder, its agent, or unrelated third parties.
4. If, during any phase of the construction, operation, maintenance, or termination of the pipeline, any oil or other pollutant should be discharged from the pipeline system, impacting Federal lands, the control and total removal, disposal, and cleaning up of such oil or other pollutant, wherever found, shall be the responsibility of holder, regardless of fault. Upon failure of holder to control, dispose of, or clean up such discharge on or affecting Federal lands, or to

repair all damages resulting therefrom, on the Federal lands, the Authorized Officer may take such measures as he deems necessary to control and clean up the discharge and restore the area, including where appropriate, the aquatic environment and fish and wildlife habitats, at the full expense of the holder. Such action by the Authorized Officer shall not relieve holder of any responsibility as provided herein.

5. All construction and maintenance activity will be confined to the authorized right-of-way.
6. The pipeline will be buried with a minimum cover of 36 inches between the top of the pipe and ground level.
7. The maximum allowable disturbance for construction in this right-of-way will be 30 feet:
- Blading of vegetation within the right-of-way will be allowed: maximum width of blading operations will not exceed 20 feet. The trench is included in this area. (*Blading is defined as the complete removal of brush and ground vegetation.*)
 - Clearing of brush species within the right-of-way will be allowed: maximum width of clearing operations will not exceed 30 feet. The trench and bladed area are included in this area. (*Clearing is defined as the removal of brush while leaving ground vegetation (grasses, weeds, etc.) intact. Clearing is best accomplished by holding the blade 4 to 6 inches above the ground surface.*)
 - The remaining area of the right-of-way (if any) shall only be disturbed by compressing the vegetation. (*Compressing can be caused by vehicle tires, placement of equipment, etc.*)
8. The holder shall stockpile an adequate amount of topsoil where blading is allowed. The topsoil to be stripped is approximately 6 inches in depth. The topsoil will be segregated from other spoil piles from trench construction. The topsoil will be evenly distributed over the bladed area for the preparation of seeding.
9. The holder shall minimize disturbance to existing fences and other improvements on public lands. The holder is required to promptly repair improvements to at least their former state. Functional use of these improvements will be maintained at all times. The holder will contact the owner of any improvements prior to disturbing them. When necessary to pass through a fence line, the fence shall be braced on both sides of the passageway prior to cutting of the fence. No permanent gates will be allowed unless approved by the Authorized Officer.
10. Vegetation, soil, and rocks left as a result of construction or maintenance activity will be randomly scattered on this right-of-way and will not be left in rows, piles, or berms, unless otherwise approved by the Authorized Officer. The entire right-of-way shall be recontoured to match the surrounding landscape. The backfilled soil shall be compacted and a 6 inch berm will be left over the ditch line to allow for settling back to grade.
11. In those areas where erosion control structures are required to stabilize soil conditions, the holder will install such structures as are suitable for the specific soil conditions being encountered and which are in accordance with sound resource management practices.

12. The holder will reseed all disturbed areas. Seeding will be done according to the attached seeding requirements, using the following seed mix.

- | | |
|--|--|
| <input checked="" type="checkbox"/> seed mixture 1 | <input type="checkbox"/> seed mixture 3 |
| <input type="checkbox"/> seed mixture 2 | <input type="checkbox"/> seed mixture 4 |
| <input type="checkbox"/> seed mixture 2/LPC | <input type="checkbox"/> Aplomado Falcon Mixture |

13. All above-ground structures not subject to safety requirements shall be painted by the holder to blend with the natural color of the landscape. The paint used shall be color which simulates "Standard Environmental Colors" – **Shale Green**, Munsell Soil Color No. 5Y 4/2.

14. The pipeline will be identified by signs at the point of origin and completion of the right-of-way and at all road crossings. At a minimum, signs will state the holder's name, BLM serial number, and the product being transported. All signs and information thereon will be posted in a permanent, conspicuous manner, and will be maintained in a legible condition for the life of the pipeline.

15. The holder shall not use the pipeline route as a road for purposes other than routine maintenance as determined necessary by the Authorized Officer in consultation with the holder before maintenance begins. The holder will take whatever steps are necessary to ensure that the pipeline route is not used as a roadway. As determined necessary during the life of the pipeline, the Authorized Officer may ask the holder to construct temporary deterrence structures.

16. Any cultural and/or paleontological resources (historic or prehistoric site or object) discovered by the holder, or any person working on his behalf, on public or Federal land shall be immediately reported to the Authorized Officer. Holder shall suspend all operations in the immediate area of such discovery until written authorization to proceed is issued by the Authorized Officer. An evaluation of the discovery will be made by the Authorized Officer to determine appropriate actions to prevent the loss of significant cultural or scientific values. The holder will be responsible for the cost of evaluation and any decision as to proper mitigation measures will be made by the Authorized Officer after consulting with the holder.

17. The operator shall be held responsible if noxious weeds become established within the areas of operations. Weed control shall be required on the disturbed land where noxious weeds exist, which includes associated roads, pipeline corridor and adjacent land affected by the establishment of weeds due to this action. The operator shall consult with the Authorized Officer for acceptable weed control methods, which include following EPA and BLM requirements and policies.

18. Escape Ramps - The operator will construct and maintain pipeline/utility trenches that are not otherwise fenced, screened, or netted to prevent livestock, wildlife, and humans from becoming entrapped. At a minimum, the operator will construct and maintain escape ramps, ladders, or other methods of avian and terrestrial wildlife escape in the trenches according to the following criteria:

- a. Any trench left open for eight (8) hours or less is not required to have escape ramps; however, before the trench is backfilled, the contractor/operator shall inspect the trench for wildlife, remove all trapped wildlife, and release them at least 100 yards from the trench.
- b. For trenches left open for eight (8) hours or more, earthen escape ramps (built at no more than a 30 degree slope and spaced no more than 500 feet apart) shall be placed in the trench.

19. The period of time that any trenches or other excavations are kept open will be held to the minimum compatible with construction requirements. The holder shall not leave more than one-half mile of trench open overnight or otherwise unattended. Open trenches will have ramps, bridges, or earthen plugs, at least six feet wide, every one-quarter mile to pass livestock and wildlife.

C. ELECTRIC LINES

STANDARD STIPULATIONS FOR OVERHEAD ELECTRIC DISTRIBUTION LINES

A copy of the grant and attachments, including stipulations, survey plat and/or map, will be on location during construction. BLM personnel may request to you a copy of your permit during construction to ensure compliance with all stipulations.

Holder agrees to comply with the following stipulations to the satisfaction of the Authorized Officer:

1. The holder shall indemnify the United States against any liability for damage to life or property arising from the occupancy or use of public lands under this grant.
2. The holder shall comply with all applicable Federal laws and regulations existing or hereafter enacted or promulgated. In any event, the holder shall comply with the Toxic Substances Control Act of 1976 as amended, 15 USC 2601 et seq. (1982) with regards to any toxic substances that are used, generated by or stored on the right-of-way or on facilities authorized under this right-of-way grant. (See 40 CFR, Part 702-799 and especially, provisions on polychlorinated biphenyls, 40 CFR 761.1-761.193.) Additionally, any release of toxic substances (leaks, spills, etc.) in excess of the reportable quantity established by 40 CFR, Part 117 shall be reported as required by the Comprehensive Environmental Response, Compensation, and Liability Act, section 102b. A copy of any report required or requested by any Federal agency or State government as a result of a reportable release or spill of any toxic substances shall be furnished to the authorized officer concurrent with the filing of the reports to the involved Federal agency or State government.
3. The holder agrees to indemnify the United States against any liability arising from the release of any hazardous substance or hazardous waste (as these terms are defined in the Comprehensive Environmental Response, Compensation and Liability Act of 1980, 42

U.S.C. 9601, et seq. or the Resource Conservation and Recovery Act, 42 U.S.C. 6901, et seq.) on the Right-of-Way (unless the release or threatened release is wholly unrelated to the Right-of-Way holder's activity on the Right-of-Way), or resulting from the activity of the Right-of-Way holder on the Right-of-Way. This agreement applies without regard to whether a release is caused by the holder, its agent, or unrelated third parties.

4. There will be no clearing or blading of the right-of-way unless otherwise agreed to in writing by the Authorized Officer.

5. Power lines shall be constructed and designed in accordance to standards outlined in "Suggested Practices for Avian Protection on Power lines: The State of the Art in 2006" Edison Electric Institute, APLIC, and the California Energy Commission 2006. The holder shall assume the burden and expense of proving that pole designs not shown in the above publication deter raptor perching, roosting, and nesting. Such proof shall be provided by a raptor expert approved by the Authorized Officer. The BLM reserves the right to require modification or additions to all powerline structures placed on this right-of-way, should they be necessary to ensure the safety of large perching birds. Such modifications and/or additions shall be made by the holder without liability or expense to the United States.

Raptor deterrence will consist of but not limited to the following: triangle perch discouragers shall be placed on each side of the cross arms and a nonconductive perching deterrence shall be placed on all vertical poles that extend past the cross arms.

6. The holder shall minimize disturbance to existing fences and other improvements on public lands. The holder is required to promptly repair improvements to at least their former state. Functional use of these improvements will be maintained at all times. The holder will contact the owner of any improvements prior to disturbing them. When necessary to pass through a fence line, the fence shall be braced on both sides of the passageway prior to cutting the fence. No permanent gates will be allowed unless approved by the Authorized Officer.

7. The BLM serial number assigned to this authorization shall be posted in a permanent, conspicuous manner where the power line crosses roads and at all serviced facilities. Numbers will be at least two inches high and will be affixed to the pole nearest the road crossing and at the facilities served.

8. Upon cancellation, relinquishment, or expiration of this grant, the holder shall comply with those abandonment procedures as prescribed by the Authorized Officer.

9. All surface structures (poles, lines, transformers, etc.) shall be removed within 180 days of abandonment, relinquishment, or termination of use of the serviced facility or facilities or within 180 days of abandonment, relinquishment, cancellation, or expiration of this grant, whichever comes first. This will not apply where the power line extends

service to an active, adjoining facility or facilities.

10. Any cultural and/or paleontological resource (historic or prehistoric site or object) discovered by the holder, or any person working on his behalf, on public or Federal land shall be immediately reported to the Authorized Officer. Holder shall suspend all operations in the immediate area of such discovery until written authorization to proceed is issued by the Authorized Officer. An evaluation of the discovery will be made by the Authorized Officer to determine appropriate actions to prevent the loss of significant cultural or scientific values. The holder will be responsible for the cost of evaluation and any decision as to proper mitigation measures will be made by the Authorized Officer after consulting with the holder.

11. Special Stipulations:

- For reclamation remove poles, lines, transformer, etc. and dispose of properly.
- Fill in any holes from the poles removed.

IX. INTERIM RECLAMATION

During the life of the development, all disturbed areas not needed for active support of production operations should undergo interim reclamation in order to minimize the environmental impacts of development on other resources and uses.

Within six (6) months of well completion, operators should work with BLM surface management specialists (Jim Amos: 575-234-5909) to devise the best strategies to reduce the size of the location. Interim reclamation should allow for remedial well operations, as well as safe and efficient removal of oil and gas.

During reclamation, the removal of caliche is important to increasing the success of revegetating the site. Removed caliche that is free of contaminants may be used for road repairs, fire walls or for building other roads and locations. In order to operate the well or complete workover operations, it may be necessary to drive, park and operate on restored interim vegetation within the previously disturbed area. Disturbing revegetated areas for production or workover operations will be allowed. If there is significant disturbance and loss of vegetation, the area will need to be revegetated. Communicate with the appropriate BLM office for any exceptions/exemptions if needed.

All disturbed areas after they have been satisfactorily prepared need to be reseeded with the seed mixture provided below.

Upon completion of interim reclamation, the operator shall submit a Sundry Notices and Reports on Wells, Subsequent Report of Reclamation (Form 3160-5).

X. FINAL ABANDONMENT & RECLAMATION

At final abandonment, well locations, production facilities, and access roads must undergo "final" reclamation so that the character and productivity of the land are restored.

Earthwork for final reclamation must be completed within six (6) months of well plugging. All pads, pits, facility locations and roads must be reclaimed to a satisfactory revegetated, safe, and stable condition, unless an agreement is made with the landowner or BLM to keep the road and/or pad intact.

After all disturbed areas have been satisfactorily prepared, these areas need to be revegetated with the seed mixture provided below. Seeding should be accomplished by drilling on the contour whenever practical or by other approved methods. Seeding may need to be repeated until revegetation is successful, as determined by the BLM.

Operators shall contact a BLM surface protection specialist prior to surface abandonment operations for site specific objectives (Jim Amos: 575-234-5909).

SEED MIXTURE 1 (LOAMY LOCATIONS)

The holder shall seed all disturbed areas with the seed mixture listed below. The seed mixture shall be planted in the amounts specified in pounds of pure live seed (PLS)* per acre. There shall be no primary or secondary noxious weeds in the seed mixture. Seed will be tested and the viability testing of seed will be done in accordance with State law(s) and within nine months prior to purchase. Commercial seed will be certified or registered seed. The seed container will be tagged in accordance with State law(s) and available for inspection by the authorized officer.

Seed will be planted using a drill equipped with a depth regulator to ensure proper depth of planting where drilling is possible. The seed mixture will be evenly and uniformly planted over the disturbed area (smaller/heavier seeds have a tendency to drop to the bottom of the drill and are planted first; the holder shall take appropriate measures to ensure this does not occur). Where drilling is not possible, seed will be broadcast and the area shall be raked or chained to cover the seed. When broadcasting the seed, the pounds per acre are to be double the amounts listed below. The seeding will be repeated until a satisfactory stand is established as determined by the authorized officer. Evaluation of growth will not be made before completion of at least one full growing season after seeding.

Species to be planted in pounds of pure live seed* per acre (**note: if broadcasting seed, amounts are to be doubled**):

Species	Pound/acre
Plains Lovegrass (<i>Eragrostis intermedia</i>)	0.5
Sand Dropseed (<i>Sporobolus cryptandrus</i>)	1.0
Sideoats grama (<i>Bouteloua curtipendula</i>)	5.0

* Pounds of pure live seed = (Pounds of seed) x (Percent purity) x (Percent germination)