

District I  
1625 N. French Dr., Hobbs, NM 88240  
Phone: (575) 393-6161 Fax: (575) 393-0720  
District II  
811 S. First St., Artesia, NM 88210  
Phone: (575) 748-1283 Fax: (575) 748-9720  
District III  
1000 Rio Brazos Road, Aztec, NM 87410  
Phone: (505) 334-6178 Fax: (505) 334-6170  
District IV  
1220 S. St. Francis Dr., Sante Fe, NM 87505  
Phone: (505) 476-3460 Fax: (505) 476-3462

State of New Mexico **NM OIL CONSERVATION**  
Energy, Minerals & Natural Resources ARTESIA DISTRICT  
Department AUG 14 2015  
OIL CONSERVATION DIVISION  
1220 South St. Francis Dr. **RECEIVED**  
Sante Fe, NM 87505

FORM C-102  
Revised August 1, 2011  
Submit one copy to appropriate  
District Office

☐ AMENDED REPORT

**WELL LOCATION AND ACREAGE DEDICATION PLAT**

|   |  |  |
|---|--|--|
| <sup>1</sup> API Number<br>3030-015-43012 | <sup>2</sup> Pool Code<br>50371                          | <sup>3</sup> Pool Name<br>Pierce Crossing; Bone Spring |
| <sup>4</sup> Property Code<br>313993      | <sup>5</sup> Property Name<br>TIGER 14 24S 28E RB        | <sup>6</sup> Well Number<br>#124H                      |
| <sup>7</sup> OGRID No.<br>M289            | <sup>8</sup> Operator Name<br>MATADOR PRODUCTION COMPANY | <sup>9</sup> Elevation<br>2985'                        |

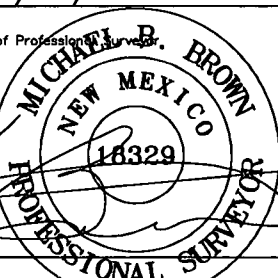
<sup>10</sup>Surface Location

| UL or lot no. | Section | Township | Range | Lot Idn | Feet from the | North/South line | Feet from the | East/West line | County |
|---------------|---------|----------|-------|---------|---------------|------------------|---------------|----------------|--------|
| P             | 14      | 24-S     | 28-E  | -       | 478'          | SOUTH            | 252'          | EAST           | EDDY   |

| UL or lot no. | Section | Township | Range | Lot Idn | Feet from the | North/South line | Feet from the | East/West line | County |
|---------------|---------|----------|-------|---------|---------------|------------------|---------------|----------------|--------|
| M             | 14      | 24-S     | 28-E  | -       | 408'          | SOUTH            | 248'          | WEST           | EDDY   |

|   |                               |                                  |                         |
|---|-------------------------------|----------------------------------|-------------------------|
| <sup>12</sup> Dedicated Acres<br>160.00 | <sup>13</sup> Joint or Infill | <sup>14</sup> Consolidation Code | <sup>15</sup> Order No. |
|---|-------------------------------|----------------------------------|-------------------------|

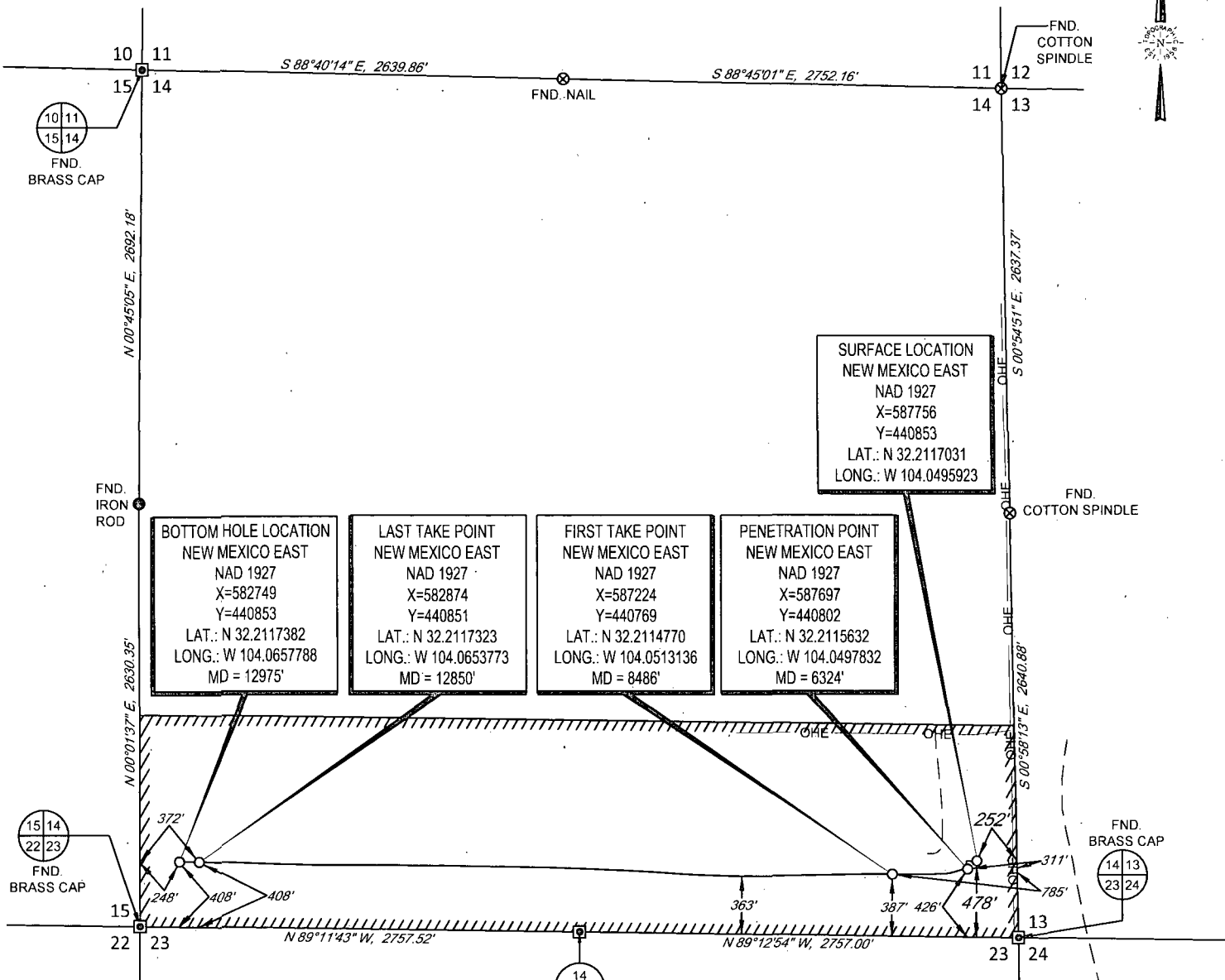
No allowable will be assigned to this completion until all interests have been consolidated or a non-standard unit has been approved by the division.

|   |  |  |   |   |  |  |
|---|--|--|---|---|--|--|
| <sup>16</sup><br>10 11<br>15 14   | <div>BOTTOM HOLE LOCATION<br/>NEW MEXICO EAST<br/>NAD 1927<br/>X=582749<br/>Y=440853<br/>LAT.: N 32.2117382<br/>LONG.: W 104.0657788<br/>MD = 12975'</div> | <div>SURFACE LOCATION<br/>NEW MEXICO EAST<br/>NAD 1927<br/>X=587756<br/>Y=440853<br/>LAT.: N 32.2117031<br/>LONG.: W 104.0495923</div> | <div>LAST TAKE POINT<br/>NEW MEXICO EAST<br/>NAD 1927<br/>X=582874<br/>Y=440851<br/>LAT.: N 32.2117323<br/>LONG.: W 104.0653773<br/>MD = 12850'</div> | <div>FIRST TAKE POINT<br/>NEW MEXICO EAST<br/>NAD 1927<br/>X=587224<br/>Y=440769<br/>LAT.: N 32.2114770<br/>LONG.: W 104.0513136<br/>MD = 8486'</div> | <div>PENETRATION POINT<br/>NEW MEXICO EAST<br/>NAD 1927<br/>X=587697<br/>Y=440802<br/>LAT.: N 32.2115632<br/>LONG.: W 104.0497832<br/>MD = 6324'</div> | <div><sup>17</sup>OPERATOR CERTIFICATION<br/>I hereby certify that the information contained herein is true and complete to the best of my knowledge and belief, and that this organization either owns a working interest or released mineral interest in the land including the proposed bottom hole location or has a right to drill this well at this location pursuant to a contract with an owner of such a mineral or working interest, or to a voluntary pooling agreement or a compulsory pooling order heretofore entered by the division.<br/><br/>Signature: <i>Chris Carleton</i> 7/28/15<br/>Date: 7/28/15<br/>Printed Name: Chris Carleton<br/>E-mail Address: ccarleton@matadorresources.com</div> |
| <div><sup>18</sup>SURVEYOR CERTIFICATION<br/>I hereby certify that the well location shown on this plat was plotted from field notes of actual surveys made by me or under my supervision, and that the same is true to the best of my belief.<br/><br/>07/06/2015<br/>Date of Survey<br/>Signature and Seal of Professional Surveyor:<br/><br/>Certificate Number</div> |  |  |   |   |  |  |

SCALE: 1" = 1000'

0' 500' 1000'

SECTION 14, TOWNSHIP 24-S, RANGE 28-E, N.M.P.M.  
EDDY COUNTY, NEW MEXICO



LEASE NAME & WELL NO.: TIGER 14 24S 28E RB #124H  
SECTION 14 TWP 24-S RGE 28-E SURVEY N.M.P.M.  
COUNTY EDDY STATE NM ELEVATION 2985'  
DESCRIPTION 478' FSL & 252' FEL



Michael Blake Brown, P.S. No. 18329

JULY 6, 2015



TOPOGRAPHIC  
LOYALTY INNOVATION LEGACY

1400 EVERMAN PARKWAY, Ste. 197 • FT. WORTH, TEXAS 76140  
TELEPHONE: (817) 744-7512 • FAX (817) 744-7548  
2903 NORTH BIG SPRING • MIDLAND, TEXAS 79705  
TELEPHONE: (432) 682-1653 OR (800) 767-1653 • FAX (432) 682-1743  
WWW.TOPOGRAPHIC.COM

| TIGER 14 24S 28E<br>RB #124H<br>AS-COMPLETED | REVISION: |      |
|--|-----------|------|
|  | INT       | DATE |
| DATE: 07/06/15                               |           |      |
| FILE: AD_TIGER_14-24S-28E_RB_124H            |           |      |
| DRAWN BY: S.V.                               |           |      |
| SHEET: 1 OF 1                                |           |      |

NOTES:

1. ORIGINAL DOCUMENT SIZE: 8.5" X 11"
2. ALL BEARINGS, DISTANCES, AND COORDINATE VALUES CONTAINED HEREIN ARE GRID BASED UPON THE NEW MEXICO STATE PLANE COORDINATE SYSTEM, EAST ZONE, U.S. SURVEY FEET, NORTH AMERICAN DATUM 1927.
3. CERTIFICATION IS MADE ONLY TO THE LOCATION OF THIS EASEMENT, IN RELATION TO THE EVIDENCE FOUND DURING A FIELD SURVEY, MADE ON THE GROUND, UNDER MY SUPERVISION, AND USING DOCUMENTATION PROVIDED BY MATADOR PRODUCTION COMPANY. ONLY UTILITIES/EASEMENTS THAT WERE VISIBLE ON THE DATE OF THIS SURVEY, WITHIN/ADJOINING THIS EASEMENT, HAVE BEEN LOCATED AS SHOWN HEREON OF WHICH I HAVE KNOWLEDGE. THIS CERTIFICATION IS LIMITED TO THOSE PERSONS OR ENTITIES SHOWN ON THE FACE OF THIS PLAT AND IS NON-TRANSFERABLE, AND MADE FOR THIS TRANSACTION ONLY.