

NM OIL CONSERVATION

DISTRICT I
1625 N. French Dr., Hobbs, NM 88240
Phone: (505) 393-6161 Fax: (505) 393-0720

DISTRICT II
811 S. First St., Artesia, NM 88210
Phone: (505) 748-1283 Fax: (505) 748-9720

DISTRICT III
1000 Rio Brazos Road, Aztec, NM 87410
Phone: (505) 334-6178 Fax: (505) 334-6170

DISTRICT IV
1220 S. St. Francis Dr., Santa Fe, NM 87505
Phone: (505) 476-3460 Fax: (505) 476-3462

ARTESIA DISTRICT

State of New Mexico

Energy, Minerals & Natural Resources Department

OIL CONSERVATION DIVISION

RECEIVED 1220 South St. Francis Dr.
Santa Fe, New Mexico 87505

Form C-102

Revised August 1, 2011

Submit one copy to appropriate
District Office

~~AMENDED~~ REPORT

WELL LOCATION AND ACREAGE DEDICATION PLAT

API Number 30- 015-43360	Pool Code 96721	Pool Name LAGUNA SALADO; BONE SPRING
Property Code 37294	Property Name 20702 HARROUN RANCH FEDERAL COM	Well Number 2H
OGRID No. 260297	Operator Name BTA OIL PRODUCERS	Elevation 2966'

Surface Location

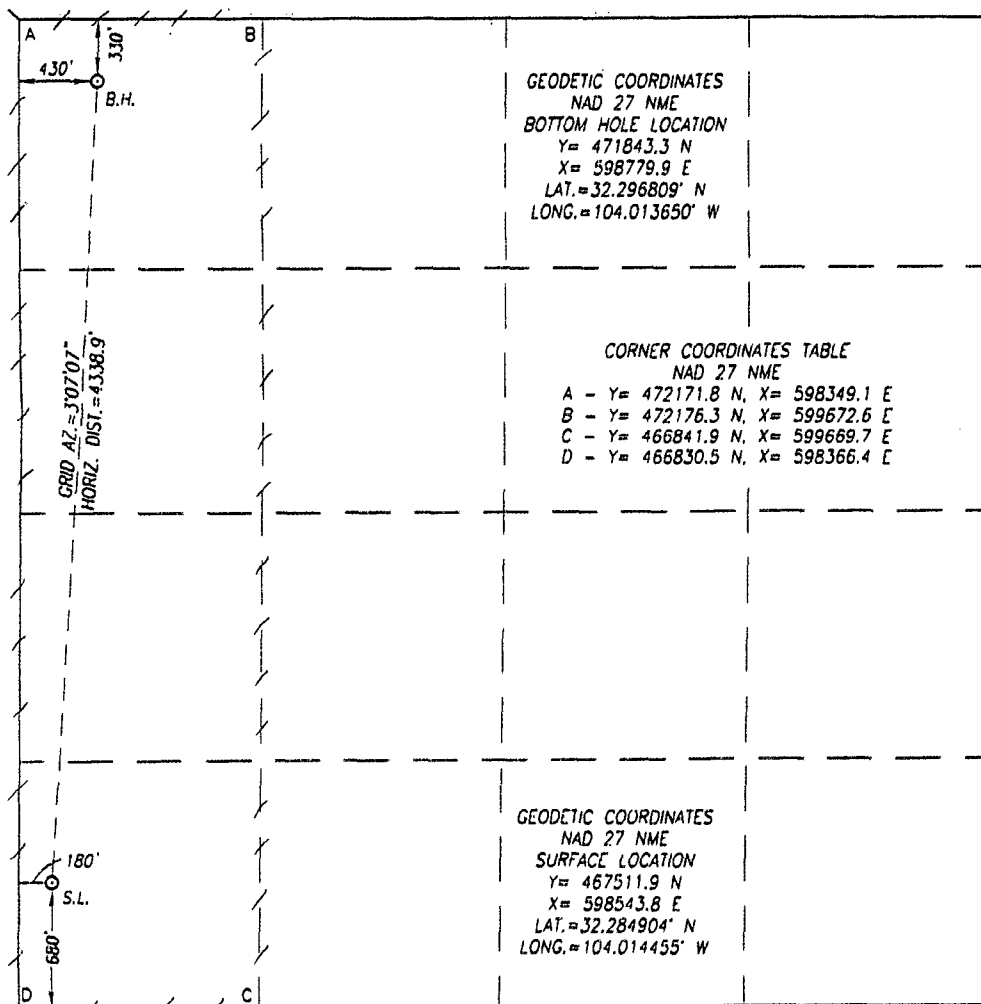
UL or lot No.	Section	Township	Range	Lot Idn	Feet from the	North/South line	Feet from the	East/West line	County
M	20	23-S	29-E		680	SOUTH	180	WEST	EDDY

Bottom Hole Location If Different From Surface

UL or lot No.	Section	Township	Range	Lot Idn	Feet from the	North/South line	Feet from the	East/West line	County
D	20	23-S	29-E		330	NORTH	430	WEST	EDDY

Dedicated Acres	Joint or Infill	Consolidation Code	Order No.
160			

NO ALLOWABLE WILL BE ASSIGNED TO THIS COMPLETION UNTIL ALL INTERESTS HAVE BEEN CONSOLIDATED OR A NON-STANDARD UNIT HAS BEEN APPROVED BY THE DIVISION



GEODETIC COORDINATES
NAD 27 NME
BOTTOM HOLE LOCATION
Y = 471843.3 N
X = 598779.9 E
LAT. = 32.296809° N
LONG. = 104.013650° W

CORNER COORDINATES TABLE NAD 27 NME

A - Y = 472171.8 N, X = 598349.1 E
B - Y = 472176.3 N, X = 599672.6 E
C - Y = 466841.9 N, X = 599669.7 E
D - Y = 466830.5 N, X = 598366.4 E

GEODETIC COORDINATES
NAD 27 NME
SURFACE LOCATION
Y = 467511.9 N
X = 598543.8 E
LAT. = 32.284904° N
LONG. = 104.014455° W

OPERATOR CERTIFICATION

I hereby certify that the information herein is true and complete to the best of my knowledge and belief, and that this organization either owns a working interest or unleased mineral interest in the land including the proposed bottom hole location or has a right to drill this well at this location pursuant to a contract with an owner of such mineral or working interest, or to a voluntary pooling agreement or a compulsory pooling order heretofore entered by the division.

Kayla McConnell 4/10/15
Signature Date
Kayla McConnell
Printed Name
kmccconnell@btaoil.com
E-mail Address

SURVEYOR CERTIFICATION

I hereby certify that the well location shown on this plat was plotted from field notes of actual surveys made by me or under my supervision, and that the same is true and correct to the best of my belief.

MARCH 12, 2015
Date of Survey
Signature & Seal of Professional Surveyor:
Ronald J. Eidson
3239
Certificate Number Gary G. Eidson 12641
Ronald J. Eidson 3239
LSL JWSC W.O.: 15.11.0181

Accepted for record
NMOC