

N.M. Oil Cons. Dist. 2
UNITED STATES DEPARTMENT OF THE INTERIOR
BUREAU OF LAND MANAGEMENT
1901 W. Grand Avenue
Artesia, NM 88210FORM APPROVED
OMB NO. 1004-0136
Expires: February 28, 1995

APPLICATION FOR PERMIT TO DRILL OR DEEPEN

1A. TYPE OF WORK

DRILL ☒DEEPEN ☐

B. TYPE OF WELL

OIL
WELL ☒GAS
WELL ☐OTHER ☐SINGLE
ZONE ☒MULTIPLE
ZONE ☐

2. NAME OF OPERATOR

POGO PRODUCING COMPANY (RICHARD WRIGHT 915-685-8140)

3. ADDRESS AND TELEPHONE NO.

P.O. BOX 10340 MIDLAND, TEXAS 79702-7340 (915-685-8100)

4. LOCATION OF WELL (Report location clearly and in accordance with any State requirements.)

At surface

660' FNL & 1980' FWL SEC. 10 T24S-R31E EDDY CO. NM

At proposed prod. zone SAME

14. DISTANCE IN MILES AND DIRECTION FROM NEAREST TOWN OR POST OFFICE*

Approximately 18 miles East of Carlsbad New Mexico

15. DISTANCE FROM PROPOSED*

LOCATION TO NEAREST
PROPERTY OR LEASE LINE, FT.
(Also to nearest drlg. unit lne, if any)

660'

16. NO. OF ACRES IN LEASE

320

17. NO. OF ACRES ASSIGNED
TO THIS WELL

40

18. DISTANCE FROM PROPOSED LOCATION*
TO NEAREST WELL, DRILLING, COMPLETED,
OR APPLIED FOR, ON THIS LEASE, FT.

1320'

19. PROPOSED DEPTH

8500'

20. ROTARY OR CABLE TOOLS

ROTARY

21. ELEVATIONS (Show whether DF, RT, GR, etc.)

3460' GR. Carlsbad Controlled Water Basin

22. APPROX. DATE WORK WILL START*
WHEN APPROVED

23. PROPOSED CASING AND CEMENTING PROGRAM

SIZE OF HOLE	GRADE SIZE OF CASING	WEIGHT PER FOOT	SETTING DEPTH	QUANTITY OF CEMENT
25"	Conductor 20"	NA	40'	Cement to surface with Redi-mix
17½"	H-40 13 3/8"	48	600' 850'	800 Sx. circulate to surface
11"	J-55 8 5/8"	32	4200'	1200 Sx. " " "
7 7/8"	J-55 5½"	17 & 15.5	8500'	1750 Sx. " " "

1. Drill 25" hole to 40'. Set 40' of 20" conductor pipe and cement to surface with Redi-mix.
2. Drill 17½" hole to 600'. Run and set 600' of 13 3/8" 48# H-40 ST&C casing. Cement with 600 Sx. of Class "C" POZ-GEL 65/35/6, tail in with 200 Sx. of Class "C" cement + 2% CaCl. Circulate cement to surface.
3. Drill 11" hole to 4200'. Run and set 4200' of 8 5/8" 32# J-55 ST&C casing. Cement with 1000 Sx. of Class "C" 65/35/6 POZ-GEL + 5% NaCl, tail in with 200 Sx. of Class "C" cement + 2% CaCl, circulate cement to surface.
4. Drill 7 7/8" hole to 8500'. Run and set 8500' of 5½" casing as follows: 2500' of 5½" 17# J-55 LT&C, 5000' of 15.5# J-55 LT&C, 1000' of 17# J-55 LT&C casing. Cement in 3 stages, DV Tools at 5800' & 3700' ±. Cement 1st stage with 650 Sx. of Class "H" Premium Plus cement + additives, 2nd stage cement with 600 Sx. of Class "C" cement + 8# of Gilsonite/Sx., cement 3rd stage with 400 Sx. of Class "C" 65/35/6 POZ-Gel, tail in with 100 Sx. of Class "C" cement + 1% CaCl, circulate cement to surface.

IN ABOVE SPACE DESCRIBE PROPOSED PROGRAM: If proposal is to deepen, give data on present productive zone and proposed new productive zone. If proposal is to drill or deepen directionally, give pertinent data on subsurface locations and measured and true vertical depths. Give blowout preventer program, if any.

SIGNED

TITLE AGENT

DATE 02/06/03

(This space for Federal or State office use)

APPROVAL SUBJECT TO
GENERAL REQUIREMENTS AND
SPECIAL STIPULATIONS
ATTACHED

PERMIT NO.

Application approval does not warrant or certify that the applicant holds legal or equitable title to those rights in the subject lease which would entitle the applicant to conduct operations thereon.

CONDITIONS OF APPROVAL, IF ANY:

APPROVED BY

Linda S.C. Russell

TITLE

STATE DIRECTOR

DATE

APR 16 2003

*See Instructions On Reverse Side

APPROVAL FOR 1 YEAR

Title 18 U.S.C. Section 1001, makes it a crime for any person knowingly and willfully to make to any department or agency of the United States any false, fictitious or fraudulent statements or representations as to any matter within its jurisdiction.

DISTRICT I
P.O. Box 1980, Hobbs, NM 88241-1980

DISTRICT II
P.O. Drawer DD, Artesia, NM 88211-0719

DISTRICT III
1000 Rio Brazos Rd., Aztec, NM 87410

DISTRICT IV
P.O. BOX 2088, SANTA FE, N.M. 87504-2088

State of New Mexico
Energy, Minerals and Natural Resources Department

OIL CONSERVATION DIVISION
P.O. Box 2088
Santa Fe, New Mexico 87504-2088

Form C-102
Revised February 10, 1994
Submit to Appropriate District Office
State Lease - 4 Copies
Fee Lease - 3 Copies

WELL LOCATION AND ACREAGE DEDICATION PLAT

☐ AMENDED REPORT

API Number	Pool Code 53815	Pool Name SAND DUNES DELAWARE-WEST
Property Code	Property Name SUNDANCE "10" FEDERAL	Well Number 2
OGRID No. 17891	Operator Name POGO PRODUCING COMPANY	Elevation 3460'

Surface Location

UL or lot No. C	Section 10	Township 24-S	Range 31-E	Lot Idn	Feet from the 660	North/South line NORTH	Feet from the 1980	East/West line WEST	County EDDY
--------------------	---------------	------------------	---------------	---------	----------------------	---------------------------	-----------------------	------------------------	----------------

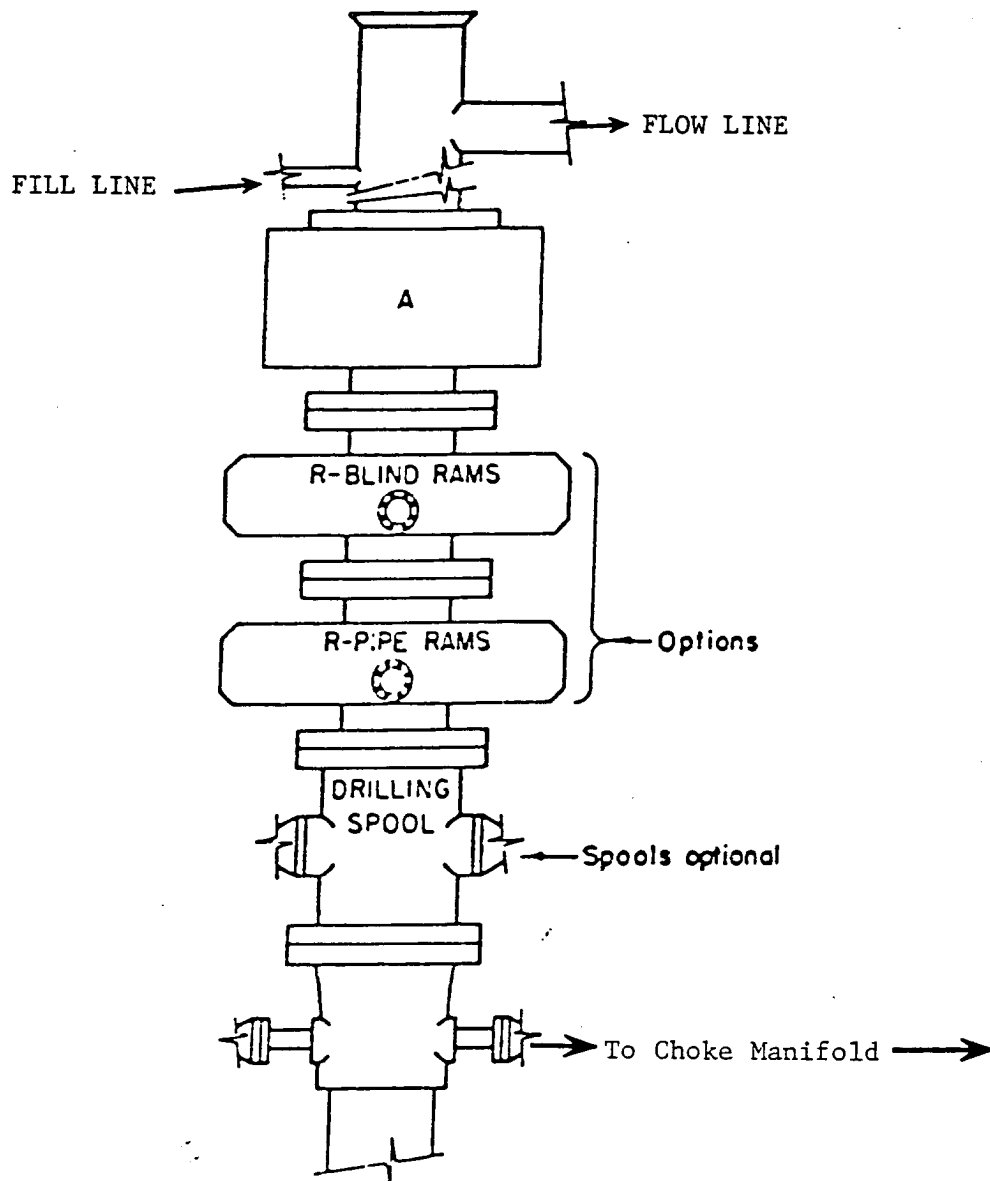
Bottom Hole Location If Different From Surface

UL or lot No.	Section	Township	Range	Lot Idn	Feet from the	North/South line	Feet from the	East/West line	County
Dedicated Acres 40	Joint or Infill	Consolidation Code	Order No.						

NO ALLOWABLE WILL BE ASSIGNED TO THIS COMPLETION UNTIL ALL INTERESTS HAVE BEEN CONSOLIDATED
OR A NON-STANDARD UNIT HAS BEEN APPROVED BY THE DIVISION

	<p>OPERATOR CERTIFICATION</p> <p>I hereby certify the the information contained herein is true and complete to the best of my knowledge and belief.</p> <p><i>Joe T. Janica</i> Signature</p> <p>Joe T. Janica Printed Name</p> <p>Agent Title</p> <p>02/06/03 Date</p> <p>SURVEYOR CERTIFICATION</p> <p>I hereby certify that the well location shown on this plat was plotted from field notes of actual surveys made by me or under my supervision, and that the same is true and correct to the best of my belief.</p> <p>JANUARY 24, 2003 Date Surveyed</p> <p><i>Ronald J. Edson</i> Signature & Seal of Professional Surveyor</p> <p>03.11.0100 Professional Surveyor</p> <p>Certificate No. RONALD J. EDSON 3239 GARY EDSON 12641</p>
--	---

EXHIBIT "A"



ARRANGEMENT SRRA

900 Series
3000 PSI WP

EXHIBIT "E"
SKETCH OF B.O.P. TO BE USED ON

POGO PRODUCING COMPANY
SUNDANCE "10" FEDERAL # 2
UNIT "C" SECTION 10
T24S-R31E EDDY CO. NM

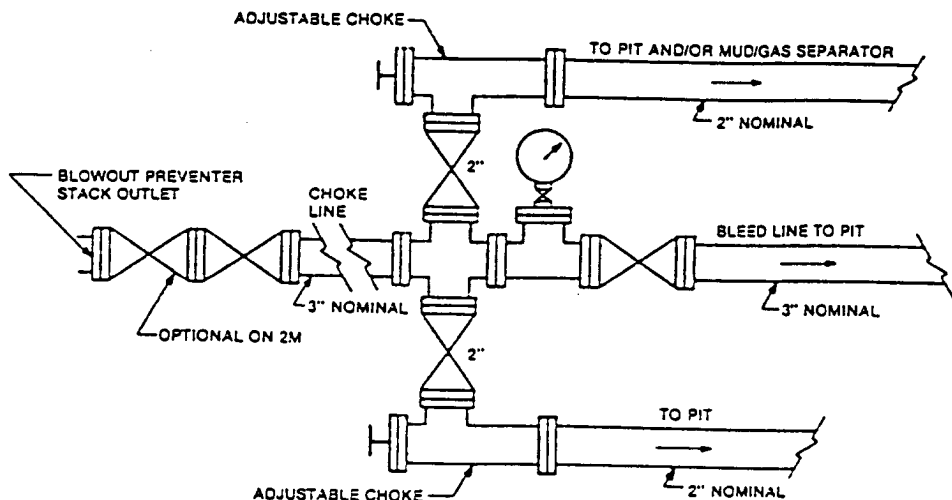


FIGURE K4-1. Typical choke manifold assembly for 2M and 3M rated working pressure service — surface installation.

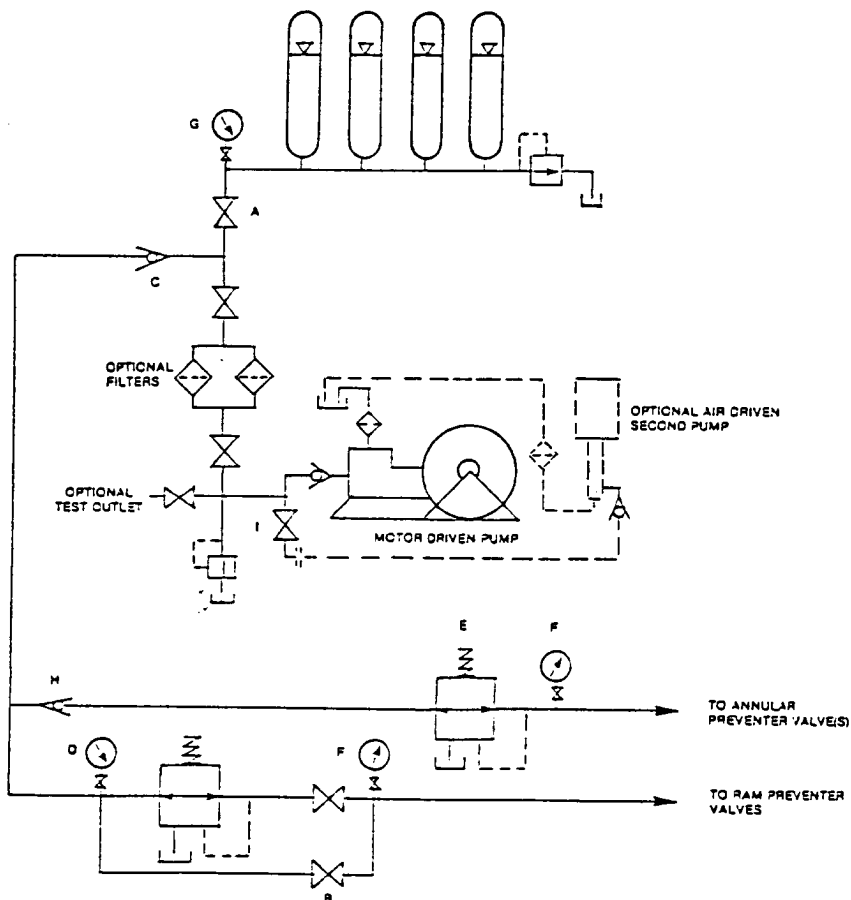


FIGURE K6-1. The schematic sketch of an accumulator system shows required and optional components.

EXHIBIT "E-1"
CHOKE MANIFOLD & CLOSING UNIT

POGO PRODUCING COMPANY
SUNDANCE "10" FEDERAL # 2
UNIT "C" SECTION 10
T24S-R31E EDDY CO. NM