

Submit To Appropriate District Office
State Lease - 6 copies
Fee Lease - 5 copies

State of New Mexico
Energy, Minerals and Natural Resources

Form C-105
Revised March 25, 1999

District I
1625 N. French Dr., Hobbs, NM 88240
District II
811 South First, Artesia, NM 88210
District III
1000 Rio Brazos Rd., Aztec, NM 87410
District IV
2040 South Pacheco, Santa Fe, NM 87505

OIL CONSERVATION DIVISION
2040 South Pacheco
Santa Fe, NM 87505

WELL API NO.
30-005-63516

5. Indicate Type of Lease

STATE ☒ FEE ☐

State Oil & Gas Lease No.
LG-5663-2

WELL COMPLETION OR RECOMPLETION REPORT AND LOG

1a. Type of Well:
OIL WELL ☐ GAS WELL ☒ DRY ☐ OTHER _____
b. Type of Completion:
NEW WORK PLUG DIFF. RESVR. OTHER
WELL ☒ OVER ☐ DEEPEN ☐ BACK ☐ RESVR. ☐

2. Name of Operator
OCEAN ENERGY, INC.

3. Address of Operator
1001 Fannin, Suite 1600, Houston, TX 77002

4. Well Location
Unit Letter **A** : **990** Feet From The **North** Line and **330** Feet From The **East** Line

7. Lease Name or Unit Agreement Name

White State "35"

8. Well No.
3

9. Pool name or Wildcat
Diamond Mound; Morrow

Section **35** Township **15S** Range **27E** NMPM **Chaves** County

10. Date Spudded **1/14/03** 11. Date T.D. Reached **2/7/03** 12. Date Compl. (Ready to Prod.) **3/4/03** 13. Elevations (DF& RKB, RT, GR, etc.) **3554' GR; 3576' RKB** 14. Elev. Casinghead

15. Total Depth **9180'** 16. Plug Back T.D. **8980'** 17. If Multiple Compl. How Many Zones? 18. Intervals Drilled By **9180'** Rotary Tools Cable Tools

19. Producing Interval(s), of this completion - Top, Bottom, Name
8885-8890-Morrow and 8844-8852'-Morrow

20. Was Directional Survey Made
No

21. Type Electric and Other Logs Run
GR/DSN/SDL/SFT; SFT/GR/DLL/MSFL

22. Was Well Cored
No

23. CASING RECORD (Report all strings set in well)

CASING SIZE	WEIGHT LB./FT.	DEPTH SET	HOLE SIZE	CEMENTING RECORD	AMOUNT PULLED
13-3/8"	48#	487'	17-1/2"	620 sx CI C	---
8-5/8"	32#	2008'	11"	700 sx CI C	---
4-1/2"	17#	9180'	7-7/8"	775 sx CI C Poz	---

24. LINER RECORD

SIZE	TOP	BOTTOM	SACKS CEMENT	SCREEN	25. TUBING RECORD
					SIZE DEPTH SET PACKER SET
					2-3/8" 8864' 8873'

26. Perforation record (interval, size, and number)

8885-8890' (5' at 6 SPF - 30 holes)
8844-8852' (8' @ 6 SPF - 48 holes)

27. ACID, SHOT, FRACTURE, CEMENT, SQUEEZE, ETC.

DEPTH INTERVAL	AMOUNT AND KIND MATERIAL USED
8885-8890'	Frac w/17374 gal 40Q 30# WF30 Borate Xlink foam via 2-3/8" . 18080 lbs 20/40 interprop.
8844-8852'	Frac w/28266 gal 65Q Binary foam via 2-3/8". 19740 lbs 20/40 Interprop.

28. PRODUCTION

Date First Production **3/8/03** Production Method (Flowing, gas lift, pumping - Size and type pump) **Flowing** Well Status (Prod. or Shut-in) **Producing**

Date of Test 4/5/03	Hours Tested 24	Choke Size open	Prod'n For Test Period 0	Oil - Bbl 0	Gas - MCF 282	Water - Bbl. 0	Gas - Oil Ratio ---
Flow Tubing Press. 50	Casing Pressure ---	Calculated 24-Hour Rate	Oil - Bbl. 0	Gas - MCF 282	Water - Bbl. 0	Oil Gravity - API - (Corr.) ---	

29. Disposition of Gas (Sold, used for fuel, vented, etc.)

Sold

Test Witnessed By
Gary Kennedy

30. List Attachments

Deviation survey and wellbore schematic

31. I hereby certify that the information shown on both sides of this form as true and complete to the best of my knowledge and belief

Signature *Jeanie McMillan* Printed Name **Jeanie McMillan** Title **Regulatory Specialist** Date **5/30/03**

INSTRUCTIONS

INCLINATION REPORT

DATE: 3/7/2003

WELL NAME AND NUMBER WHITE STATE 35 #3

LOCATION: SEC. 35, T15S, R27E EDDY CO. NM

OPERATOR: OCEAN ENERGY, INC.

DRILLING CONTRACTOR: GREY WOLF DRILLING



The undersigned hereby certifies that he is an authorized representative of the drilling contractor who drilled the above described well and that he has conducted deviation tests and obtained the following results:

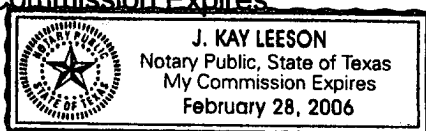
DEGREE	DEPTH	DEGREE	DEPTH	DEGREE	DEPTH	DEGREE	DEPTH
0.50	440	1.00	8733				
0.25	990						
0.50	1504						
0.50	2514						
0.75	3465						
1	3974						
0.75	5022						
0	5428						
2	6373						
0.75	6944						
1.25	7451						
0.75	7958						

Drilling Contractor:
Grey Wolf Drilling Company, LP

By: Oscar Bradley
Oscar Bradley, District Manager

Subscribed and sworn to before me on this 20th day of May, 2003.

My Commission Expires:



Feb. 28, 2006
J. Kay Leeson

devon	OPERATOR: OCEAN ENERGY	LEASE / WELL: WHITE STATE 35-3	SURVEY LOCATION: Sec. 35 - T15S - R27E	WELL SKETCH: CURRENT COMPLETION
	DRILLING RIG: GREYWOLF 76	COUNTY / STATE: CHAVES COUNTY, NEW MEXICO	SURFACE LOCATION: 990' FNL & 330' FEL	FIELD: DIAMOND MOUND
	COMPLETION RIG: LUCKY 77			

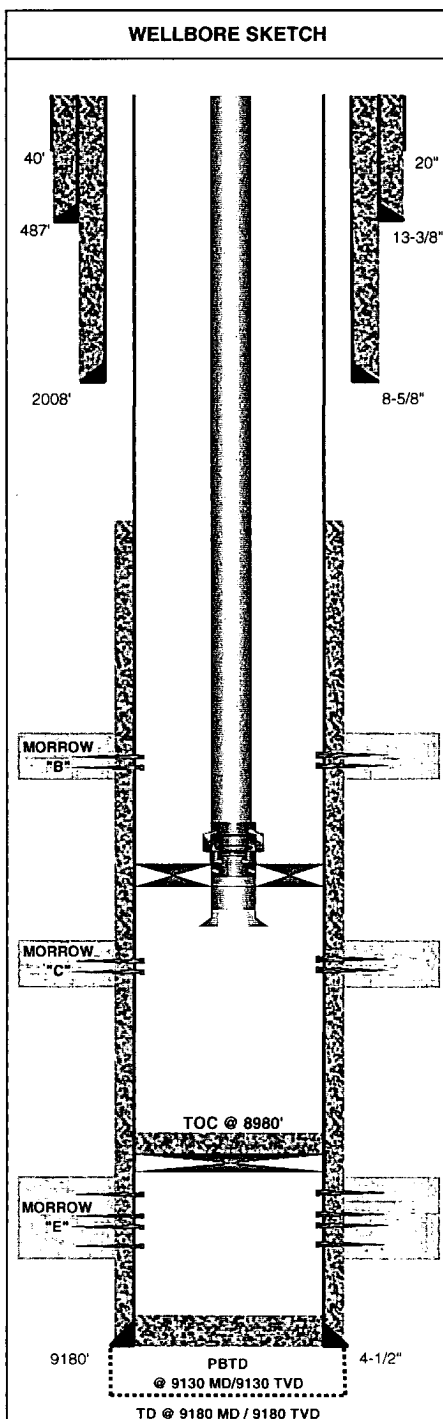
DIRECTIONAL DATA				
KOP:	STRAIGHT HOLE			
MAX DEV:	2.00	deg @	6,373	MD
DEV @ PERFS:	-	deg @	0	MD
DEV @ PERFS:	-	deg @	0	MD
DEV @ PERFS:	1.00	deg @	9,058	MD

DRILLING / COMPLETION FLUID	
DRILLING FLUID:	0.00 ppg - (Aloka)
DRILLING FLUID:	0.00 ppg - (Morrow)
DRILLING FLUID:	0.00 ppg -
COMPLETION FLUID:	- ppg -
PACKER FLUID:	8.60 ppg - 2% KCl

TUBULAR DATA						
Tubulars	Size	Weight	Grade	Thread	MD	TVD
DRIVE PIPE						
CONDUCTOR	20.000				40	40
SURFACE	13.375	48.000	H-40	LTC	487	487
INTERMEDIATE	8.625	32.000	J-55	STC	2,008	2,008
PRODUCTION	4.500	11.600	L-80	LTC	9,180	9,180
TUBING	2.375	4.700	L-80	EUE 8rd	8,864	8,864

CEMENTING DATA: 13-3/8" cemented with 645 sacks. The hole section was drilled blind. There were no returns to surface during cementing or displacement. 8-5/8" cemented with 700 sacks. Full returns to surface. 4-1/2" cemented with 775 sacks with full returns to surface.

WELLHEAD DATA	
TYPE	CAMERON
WP	5,000 psi
T R C A P E	FLANGE:
	2-1/16" 5M
	THREAD:
2-3/8" 8rd LIFT	
TUBING HANGER: ASP 7-1/16" TC BOWL	
BTM FLANGE: 7" 5M	
BPV PROFILE: 2" TYPE H	
ELEVATIONS:	
RKB: 3576'	GROUND ELEVATION
RKB-ELEV: 22'	3554'



EQUIPMENT DESCRIPTION	O D	I D	LENGTH	DEPTH MD
RKB ELEVATION				22.00
1 Cameron Tubing Hanger Type "A5P", 7-1/16" TC Bowl x 2-3/8" 8rd Top and Bottom with 5-1/2" Extended Seal Neck Top	2.375	1.995	1.00	(0.00)
1 Tubing Joint: 2-3/8", 4.7 lb/ft L-80 EUE 8rd	2.375	1.995	31.65	1.00
1 Pup Joint: 2-3/8", 4.7 lb/ft L-80 EUE 8rd	2.375	1.995	8.00	32.65
279 Tubing Joints: 2-3/8" 4.7 lb/ft L-80 EUE 8rd	2.375	1.995	8,830.35	40.65
ETOC at 6180' based on CBL dated 02/10/03				
MORROW SAND (B)	SITP=674 psi. Frac Morrow perfs 8844-8852' with 28266 gal 65Q Binary foam via 2-3/8". 19740 lbs 20/40 Interprop. Max Press=9142 psi. Avg Press=8393 psi. Avg Rate=9.4 BPM. ISIP=3750 5 min=3275 10 min=3143 15 min=3021.			
Perforations: 8844' - 8852' (8' @ 6 spf - 48 Holes)				
TITAN 22.7 gram charge loaded at 6 SPF, 60 degree phasing				
Charge Performance: EHD=0.42" and Penetration=33.64"				
Weatherford Type T-2 On-Off Tool w/ "F" Profile Nipple	2.375	1.875	1.50	8,871.00
Weatherford Arrowset 1-X Retrievable Production Packer	3.340	1.995	4.50	8,872.50
2-3/8", 4.7 lb/ft, L-80 EUE 8rd Pup Joint	2.375	1.995	6.00	8,877.00
Wireline Reentry Guide	2.375	1.995	1.00	8,883.00
Bottom of Assembly				8,884.00
MORROW SAND (C)	SITP=1620 psi. Frac Morrow perfs 8885-8890' with 17374 gal 40Q 30lb WF30 Borate Xlink foam via 2-3/8". 18080 lbs 20/40 Interprop. Max Press=8145 psi. Avg Press=7262 psi. Avg Rate=8.0 BPM. ISIP=4768 Frac Grad=0.843. Pnet Gain=2020 psi. ISIP=4768 5 min=4422 10 min=4228 15 min=4110. Tag all frac with Iridium-192 isotope			
Perforations: 8885' - 8890' (5' @ 6 spf - 30 Holes)				
TITAN 22.7 gram charge loaded at 6 SPF, 60 degree phasing				
Charge Performance: EHD=0.42" and Penetration=33.64"				
35' Cement Plug ETOC = 8980' RKB				
4.5" OWEN CIBP set February 16, 2003	4.500	-	2.00	9,015.00
MORROW SAND (E)				
Perforations: 9026' - 9030' (4' @ 6 spf)				
9050' - 9064' (14' @ 6 spf)				
9086' - 9090' (4' @ 6 spf)				
MILLENNIUM 15 gram charge loaded at 6 SPF, 60 degree phasing (TCP)				
Charge Performance: EHD=0.32" and Penetration=27.84"				
COMMENTS: Drilled to TD 02/07/03 API # 30-005-63516 Completed 02/12/03	PLUG BACK DEPTH:		9,130.00	
	TOTAL WELL DEPTH:		9,180.00	
DRAWING NOT TO SCALE	PREPARED BY:		DATE:	
	ENOS J. FANGUE		May 13, 2003	