

APPLICATION FOR PERMIT TO DRILL OR DEEPEN

5. LEASE DESIGNATION AND SERIAL NO.
LC-0293928

6. IF INDIAN, ALLOTTEE OR TRIBE NAME

1a. TYPE OF WORK
DRILL ☒ DEEPEN ☐

b. TYPE OF WELL
OIL WELL ☒ GAS WELL ☐ OTHER 168489 SINGLE ZONE ☒ MULTIPLE ZONE ☐

2. NAME OF OPERATOR
RICKS EXPLORATION, INC. (GREG WILKES 915-683-7443)

3. ADDRESS AND TELEPHONE NO.
110 WEST LOUISIANA SUITE 410 MIDLAND, TEXAS 79701 (915-683-7443)

4. LOCATION OF WELL (Report location clearly and in accordance with any State requirements.)
At surface 760' FEL & 560' FNL SECTION 27 T18S-R31E EDDY CO. NM
At proposed prod. zone SAME

5. DISTANCE IN MILES AND DIRECTION FROM NEAREST TOWN OR POST OFFICE
Approximately 12 miles Southeast of Loco Hills New Mexico

6. DISTANCE FROM PROPOSED LOCATION TO NEAREST PROPERTY OR LEASE LINE, FT.
(Also to nearest drlg. unit line, if any) 560'

7. NO. OF ACRES IN LEASE 1280

8. DISTANCE FROM PROPOSED LOCATION TO NEAREST WELL, DRILLING, COMPLETED, OR APPLIED FOR, ON THIS LEASE, FT. 250'

9. PROPOSED DEPTH 8500'

10. COUNTY OR PARISH 11. STATE
EDDY CO. NEW MEXICO

12. APPROX. DATE WORK WILL START

PROPOSED CASING AND CEMENTING PROGRAM				
SIZE OF HOLE	GRADE SIZE OF CASING	WEIGHT PER FOOT	SETTING DEPTH	QUANTITY OF CEMENT
25"	Conductor	NA	40'	Cement to surface with Redi-mix.
17 1/2"	H-40 13 3/8"	48	650'	500 Sx. circulate cement to surface
12 1/4"	J-55 8 5/8"	32	4100'	1200 Sx. " " "
7 7/8"	N-80 5 1/2"	17	8500'	475 Sx. Estimate top of cement 5000

1. Drill 25" hole to 40'. Set 40' of 20" conductor and cement to surface with Redi-mix.
2. Drill 17 1/2" hole to 650'. Run and set 650' of 13 3/8" 48# H-40 ST&C casing. Cement with 300 Sx. of Light Class "C" cement + 2% CaCl, tail in with 200 Sx. of Class "C" cement + 1/4# Flocele/Sx, + 2% CaCl, circulate cement to surface.
3. Drill 12 1/4" hole to 4100'. Run and set 4100' of 8 5/8" 32# J-55 ST&C casing. Cement with 1000 Sx. of Class "C" Light weight cement + additives, tail in with 200 Sx. of Class "C" cement + 1% CaCl, circulate cement to surface.
4. Drill 7 7/8" hole to 8500'. Run and set 8500' of 5 1/2" 17# N-80 LT&C casing. Cement with 250 Sx. of Class "H" Light weight cement + additives, tail on with 225 Sx. of Class "H" cement + additives, estimate top of cement 5000' from surface. Cement top to be at least 500' above the top of any productive interval

CAPITAN CONTROLLED WATER BASIN

GENERAL REQUIREMENTS AND SPECIAL STIPULATIONS ATTACHED

BOVE SPACE DESCRIBE PROPOSED PROGRAM: If proposal is to deepen, give data on present productive zone and depth of productive zone. If proposal is to drill or directionally, give pertinent data on subsurface locations and measured and true vertical depths. Give a log of the proposed program, if any.

SIGNED Joel Canice TITLE Agent DATE 04/18/03

(This space for Federal or State office use)

APPROVAL NO. _____

Application approval does not warrant or certify that the applicant holds legal or equitable title to those rights in the subject lease which would entitle the applicant to conduct operations thereon.

CONDITIONS OF APPROVAL IF ANY:

/s/ Leslie A. Theiss

FIELD MANAGER

10 9 JUN 2003

APPROVED BY _____ TITLE _____ DATE _____

DISTRICT I

1825 N. French Dr., Hobbs, NM 88240

DISTRICT II

811 South First, Artesia, NM 88210

DISTRICT III

1000 Rio Brazos Rd., Aztec, NM 87410

DISTRICT IV

2040 South Pacheco, Santa Fe, NM 87505

State of New Mexico

Energy, Minerals and Natural Resources Department

Form C-102
Revised March 17, 1999Submit to Appropriate District Office
State Lease - 4 Copies
Fee Lease - 3 Copies

OIL CONSERVATION DIVISION

2040 South Pacheco
Santa Fe, New Mexico 87505☐ AMENDED REPORT

WELL LOCATION AND ACREAGE DEDICATION PLAT

API Number		Pool Code	Pool Name
		56400	SHUGART-BONE SPRING
Property Code	Property Name		Well Number
26066	GREENWOOD PRE-GRAYBURG UNIT		21
OGRID No.	Operator Name		Elevation
168489	RICKS EXPLORATION INC.		3649'

Surface Location

UL or lot No.	Section	Township	Range	Lot Idn	Feet from the	North/South line	Feet from the	East/West line	County
A	27	18 S	31 E		560	NORTH	760	EAST	EDDY

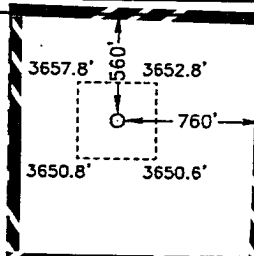
Bottom Hole Location If Different From Surface

UL or lot No.	Section	Township	Range	Lot Idn	Feet from the	North/South line	Feet from the	East/West line	County

Dedicated Acres	Joint or Infill	Consolidation Code	Order No.
40			

NO ALLOWABLE WILL BE ASSIGNED TO THIS COMPLETION UNTIL ALL INTERESTS HAVE BEEN CONSOLIDATED
OR A NON-STANDARD UNIT HAS BEEN APPROVED BY THE DIVISION

LAT-N32°43'27.3"
LONG-W103°51'04.3"



OPERATOR CERTIFICATION

I hereby certify the the information
contained herein is true and complete to the
best of my knowledge and belief.

Signature

Joe T. Janica

Printed Name

Agent

Title

04/18/03

Date

SURVEYOR CERTIFICATION

I hereby certify that the well location shown
on this plat was plotted from field notes of
actual surveys made by me or under my
supervision and that the same is true and
correct to the best of my belief.

APRIL 9, 2003

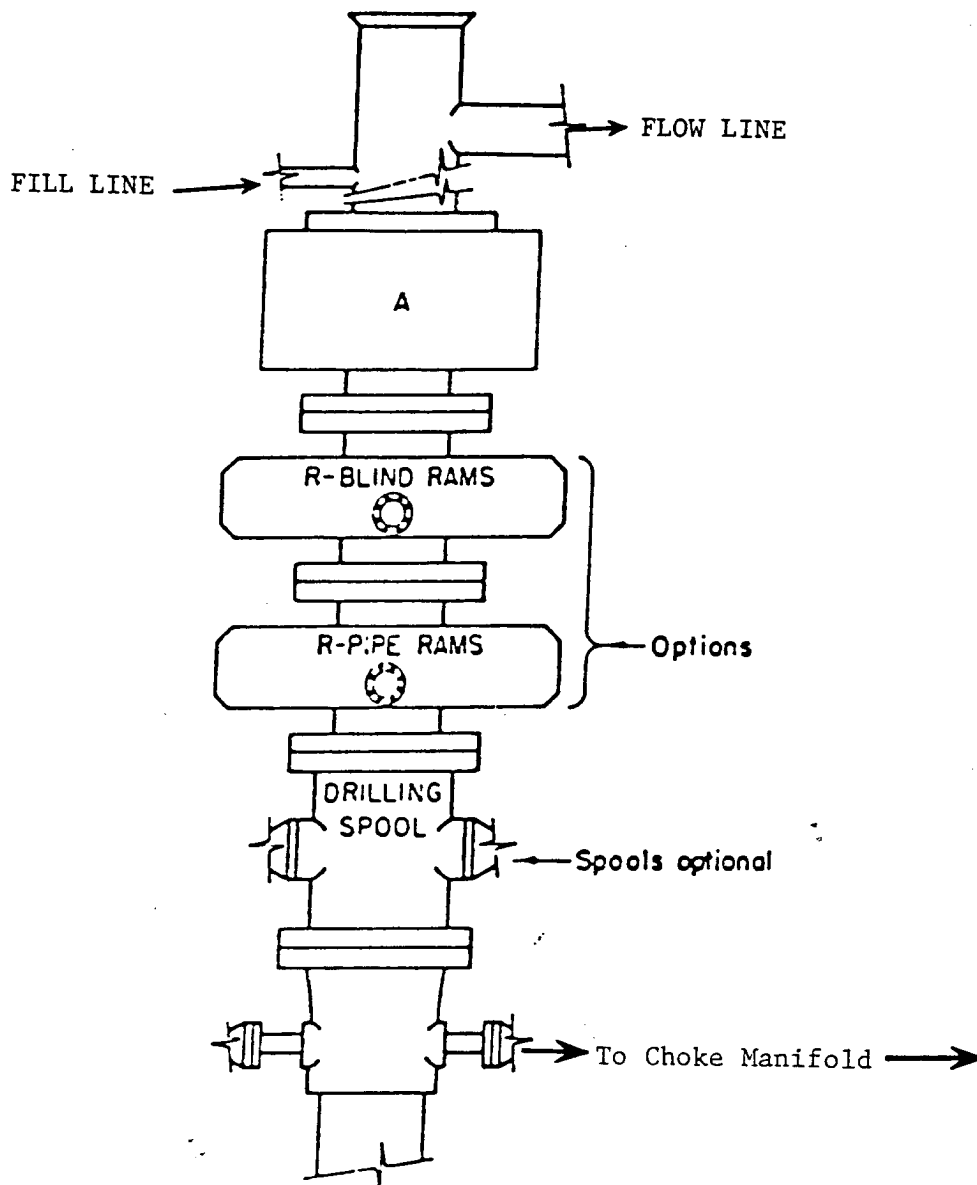
Date Surveyed

Signature & Seal of
Professional Surveyor

Certificate No. GARY L. JONES 7977

BASIN SURVEYS

EXHIBIT "A"

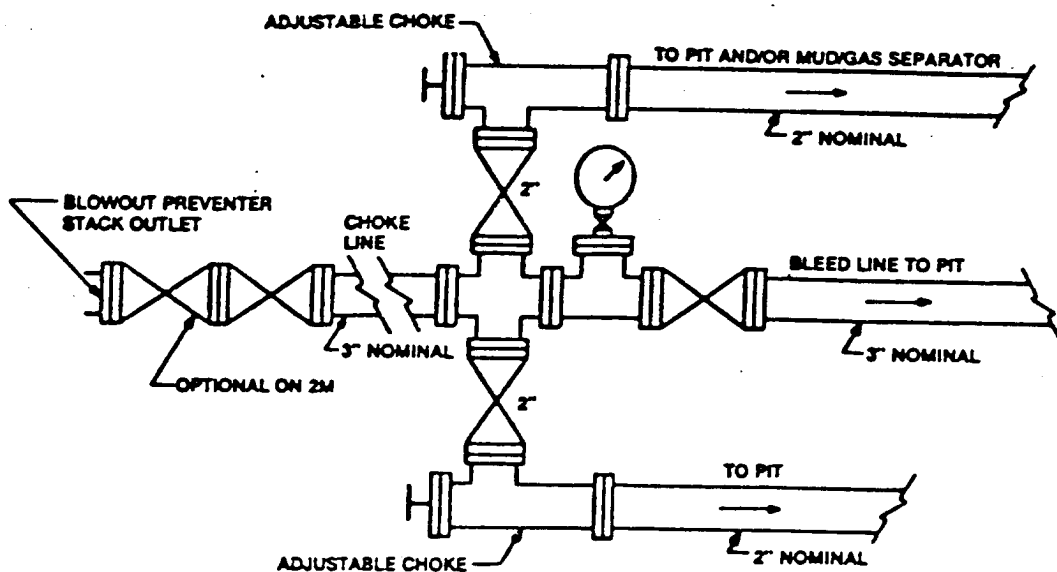


ARRANGEMENT SRRA

900 Series
3000 PSI WP

EXHIBIT "E"
SKETCH OR B.O.P. TO BE USED ON

RICKS EXPLORATION, INC.
GREENWOOD PRE GRAYBURG UNIT # 21
UNIT "A" SECTION 27
T18S-R31E EDDY CO. NM



Typical choke manifold assembly for 3M WP system

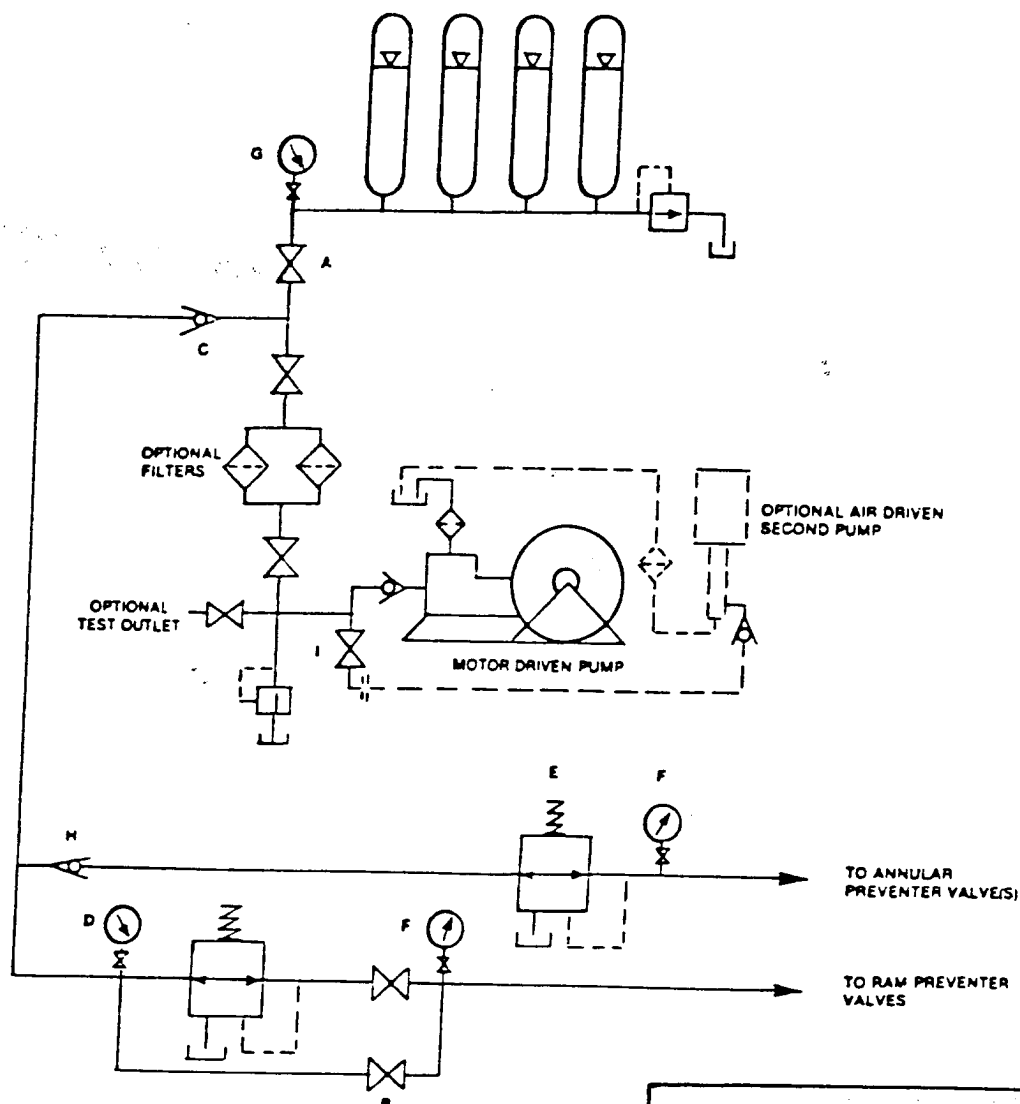


EXHIBIT "E-1"
CHOKE MANIFOLD & CLOSING UNIT

RICKS EXPLORATION, INC.
GREENWOOD PRE-GRAYBURG UNIT # 21
UNIT "A" SECTION 27
T18S-R31E EDDY CO. NM