

EC

OCD-ARTESIA

FORM APPROVED  
OMB No. 1004-0136  
Expires November 30, 2000

UNITED STATES  
DEPARTMENT OF THE INTERIOR  
BUREAU OF LAND MANAGEMENT

APPLICATION FOR PERMIT TO DRILL OR REENTER

5. Lease Serial No.  
NMNM02860

6. If Indian, Allottee or Tribe Name

7. If Unit or CA Agreement, Name and No.  
NMNM71016X

8. Lease Name and Well No.  
POKER LAKE UNIT 200

9. API Well No.  
30-015-32882

10. Field and Pool, or Exploratory  
NASH DRAW DELAWARE

1a. Type of Work: ☒ DRILL ☐ REENTER

1b. Type of Well: ☒ Oil Well ☐ Gas Well ☐ Other ☒ Single Zone ☐ Multiple Zone

2. Name of Operator  
BASS ENTERPRISES PRODUCTION CO  
Contact: TAMI WILBER  
E-Mail: twilber@basspet.com

3a. Address  
P O BOX 2760  
MIDLAND, TX 79702

3b. Phone No. (include area code)  
Ph: 432.683.2277  
Fx: 432.687.0329

4. Location of Well (Report location clearly and in accordance with any State requirements. \*)

At surface NENE 410FNL 450FEL

At proposed prod. zone NENE 410FNL 450FEL

POTASH

11. Sec., T., R., M., or Blk. and Survey or Area  
Sec 18 T24S R30E Mer NMP  
SME: BLM

14. Distance in miles and direction from nearest town or post office\*  
14 MILES EAST OF MALAGA, NM

12. County or Parish  
EDDY

13. State  
NM

15. Distance from proposed location to nearest property or lease line, ft. (Also to nearest drig. unit line, if any)  
410

16. No. of Acres in Lease  
2520.68

17. Spacing Unit dedicated to this well  
40.00

18. Distance from proposed location to nearest well, drilling, completed, applied for, on this lease, ft.  
215.87

19. Proposed Depth  
7800 MD

20. BLM/BIA Bond No. on file

21. Elevations (Show whether DF, KB, RT, GL, etc.)  
3178 GL

22. Approximate date work will start  
07/21/2003

23. Estimated duration  
12

24. Attachments

The following, completed in accordance with the requirements of Onshore Oil and Gas Order No. 1, shall be attached to this form:

1. Well plat certified by a registered surveyor.
2. A Drilling Plan.
3. A Surface Use Plan (if the location is on National Forest System Lands, the SUPO shall be filed with the appropriate Forest Service Office).
4. Bond to cover the operations unless covered by an existing bond on file (see Item 20 above).
5. Operator certification
6. Such other site specific information and/or plans as may be required by the authorized officer.

25. Signature  
(Electronic Submission)

Name (Printed/Typed)  
TAMI WILBER

Date  
05/22/2003

Title  
PRODUCTION CLERK

Approved by (Signature)

Name (Printed/Typed)

Date  
JUL 2003

ACTING

STATE DIRECTOR

Office

NM STATE OFFICE

Application approval does not warrant or certify the applicant holds legal or equitable title to those rights in the subject lease which would entitle the applicant to conduct operations thereon.  
Conditions of approval, if any, are attached.

APPROVAL FOR 1 YEAR

Title 18 U.S.C. Section 1001 and Title 43 U.S.C. Section 1212, make it a crime for any person knowingly and willfully to make to any department or agency of the United States any false, fictitious or fraudulent statements or representations as to any matter within its jurisdiction.

Additional Operator Remarks (see next page)

Electronic Submission #22160 verified by the BLM Well Information System  
For BASS ENTERPRISES PRODUCTION CO, sent to the Carlsbad  
Permitted to AFMSS for processing by Linda Askwig on 05/27/2003 (03LA053345)

APPROVAL SUBJECT TO  
GENERAL REQUIREMENTS  
AND SPECIAL STIPULATIONS  
ATTACHED

\*\* BLM REVISED \*\* BLM REVISED \*\* BLM REVISED \*\* BLM REVISED \*\* BLM REVISED \*\*



**Additional Operator Remarks:**

Surface casing to be set into Rustler below all fresh water sands.  
Production casing will be cemented using Zone Seal Cement.  
Drilling procedure, BOP Diagram, Anticipated Tops & Surface plans attached.

This well is located inside the Secretary's Potash area and outside the R-111 Potash Area.  
There are no potash leases within 1 mile of this location.

## DISTRICT I

1625 N. French Dr., Hobbs, NM 88240

## DISTRICT II

811 South First, Artesia, NM 88210

## DISTRICT III

1000 Rio Brazos Rd., Aztec, NM 87410

## DISTRICT IV

2040 South Pacheco, Santa Fe, NM 87505

## State of New Mexico

Energy, Minerals and Natural Resources Department

Form C-102

Revised March 17, 1999

Submit to Appropriate District Office

State Lease - 4 Copies

Fee Lease - 3 Copies

## OIL CONSERVATION DIVISION

2040 South Pacheco

Santa Fe, New Mexico 87504-2088

☐ AMENDED REPORT

## WELL LOCATION AND ACREAGE DEDICATION PLAT

API Number	Pool Code 47545	Pool Name Nash Draw (Delaware)
Property Code 001796	Property Name POKER LAKE UNIT	Well Number 200
OGRI No. 001801	Operator Name BASS ENTERPRISES PRODUCTION COMPANY	Elevation 3178'

## Surface Location

UL or lot No.	Section	Township	Range	Lot Idn	Feet from the	North/South line	Feet from the	East/West line	County
A	18	24 S	30 E		410	NORTH	450	EAST	EDDY

## Bottom Hole Location If Different From Surface

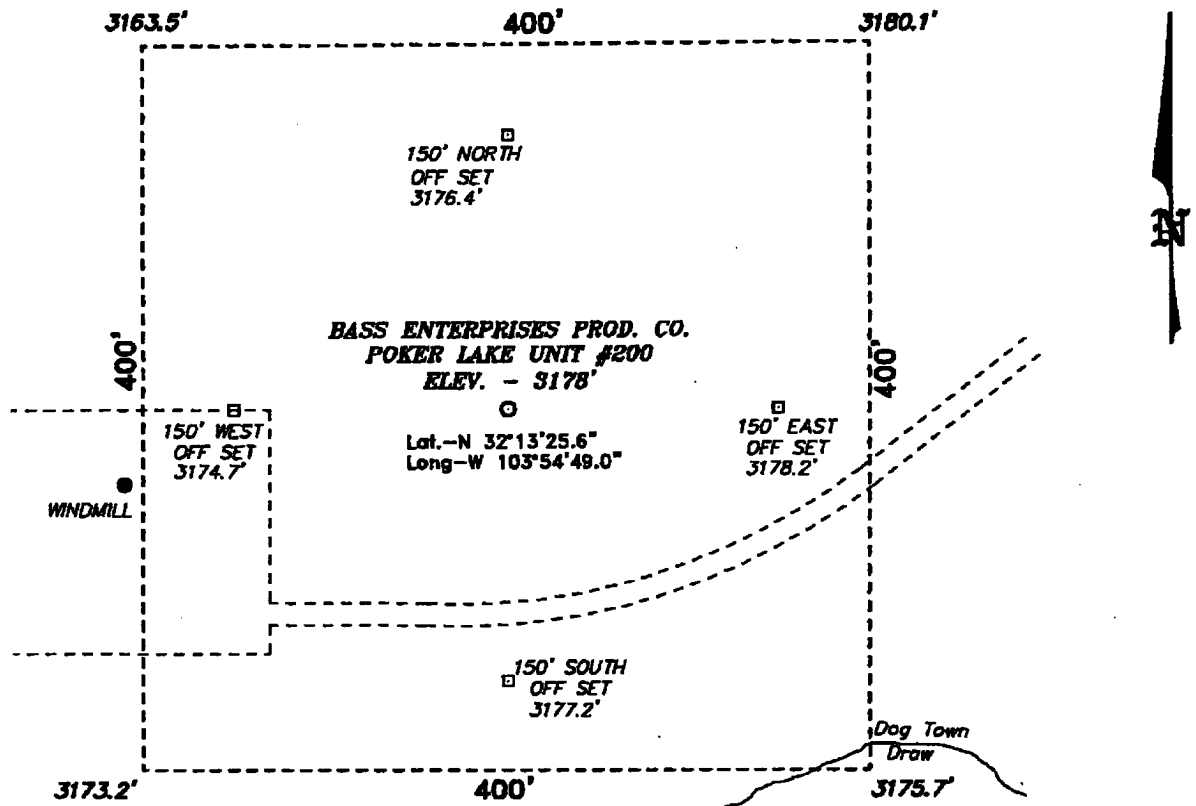
UL or lot No.	Section	Township	Range	Lot Idn	Feet from the	North/South line	Feet from the	East/West line	County

Dedicated Acres 40	Joint or Infill I	Consolidation Code	Order No.
-----------------------	----------------------	--------------------	-----------

NO ALLOWABLE WILL BE ASSIGNED TO THIS COMPLETION UNTIL ALL INTERESTS HAVE BEEN CONSOLIDATED  
OR A NON-STANDARD UNIT HAS BEEN APPROVED BY THE DIVISION

	<b>OPERATOR CERTIFICATION</b> I hereby certify the the information contained herein is true and complete to the best of my knowledge and belief.  Signature W.R. DANNELS Printed Name DIVISION DRILLING SUPT. Title 5/21/03 Date
	<b>SURVEYOR CERTIFICATION</b> I hereby certify that the well location shown on this plat was plotted from field notes of actual surveys made by me or under my supervision, and that the same is true and correct to the best of my belief. MARCH 19, 2003 Date Surveyed  Signature & Seal of Professional Surveyor 7977 W.O. No. 307 Certified by Gary L. Jones PROFESSIONAL LAND SURVEYOR BASIN SURVEYS

**SECTION 18, TOWNSHIP 24 SOUTH, RANGE 30 EAST, N.M.P.M.,  
EDDY COUNTY, NEW MEXICO.**



100 0 100 200 FEET

SCALE: 1" = 100'

**BASS ENTERPRISES PRODUCTION CO.**

REF: POKER LAKE UNIT No. 200 / Well Pad Topo

THE POKER LAKE UNIT No. 200 LOCATED 410' FROM  
THE NORTH LINE AND 450' FROM THE EAST LINE OF  
SECTION 18, TOWNSHIP 24 SOUTH, RANGE 30 EAST,

N.M.P.M., EDDY COUNTY, NEW MEXICO.

**BASIN SURVEYS** P.O. BOX 1786-HOBBS, NEW MEXICO

W.O. Number: 3075

Drawn By: K. GOAD

Date: 03-21-2003

Disk: KJG CD#7 - 3075A.DWG

Survey Date: 03-19-2003

Sheet 1 of 1 Sheets

**EIGHT POINT DRILLING PROGRAM  
BASS ENTERPRISES PRODUCTION CO.**

**NAME OF WELL: Poker Lake Unit #200**

**LEGAL DESCRIPTION - SURFACE: 410' FNL & 450' FEL, Section 18, T-24-S, R-30-E, Eddy County, New Mexico.**

**POINT 1: ESTIMATED FORMATION TOPS**

(See No. 2 Below)

**POINT 2: WATER, OIL, GAS AND/OR MINERAL BEARING FORMATIONS**

Anticipated Formation Tops: KB 3196' (est) GL 3178'

<u>FORMATION</u>	<u>ESTIMATED TOP FROM KB</u>	<u>ESTIMATED SUBSEA TOP</u>	<u>BEARING</u>
T/Rustler	521'	+2675'	Barren
T/Salt	871'	+2325'	Barren
T/Lwr Brushy Canyon 8A	6991'	-3795'	Oil/Gas
T/Bone Spring	7273'	-4077'	Oil/Gas
TD	7800'	-4604'	

**POINT 3: CASING PROGRAM**

<u>TYPE</u>	<u>INTERVALS</u>	<u>PURPOSE</u>	<u>CONDITION</u>
16"	0' - 40'	Conductor	Contractor Discretion
8-5/8", 28#, J-55, LT&C	0' - 800'	Surface	New
5-1/2", 15.5#, J-55, LT&C	0' - 6500'	Production	New
5-1/2", 17#, J-55, LT&C	6500' - 7800'	Production	New

**POINT 4: PRESSURE CONTROL EQUIPMENT (SEE ATTACHED DIAGRAM)**

A BOP equivalent to Diagram 1 will be nipped up on the surface casing head. The BOP stack choke, kill lines, kelly cocks, inside BOP, etc. will be hydro-tested to 70% of internal yield pressure of casing. In addition to the high pressure test, a low pressure (200 psi) test will be required. These tests will be performed:

- a) Upon installation
- b) After any component changes
- c) Fifteen days after a previous test
- d) As required by well conditions

A function test to insure that the preventers are operating correctly will be performed on each trip.

**POINT 5: MUD PROGRAM**

<u>DEPTH</u>	<u>MUD TYPE</u>	<u>WEIGHT</u>	<u>FV</u>	<u>PV</u>	<u>YP</u>	<u>FL</u>	<u>Ph</u>
0' - 800'	FW Spud Mud	8.6 - 9.0	60-38	NC	NC	NC	10.0
800' - 5600'	Brine Water	9.8 -10.0	28-30	NC	NC	NC	9.5-10.5
5600' - TD'	**	8.8 - 9.0	32-40	8	2	<25 cc	9.5 - 10.0

\*\* 40% diesel/60% brine emulsion

*\*May increase vis for logging purposes only.*

**POINT 6: TECHNICAL STAGES OF OPERATION****A) TESTING**

None anticipated.

**B) LOGGING**

GR-CNL-LDT-AIT from TD to base of Salt.  
GR-CNL from base of Salt to surface.

**C) CONVENTIONAL CORING**

None anticipated.

**D) CEMENT**

<u>INTERVAL</u>	<u>AMOUNT SXS</u>	<u>FT OF FILL</u>	<u>TYPE</u>	<u>GALS/SX</u>	<u>PPG</u>	<u>FT<sup>3</sup>/SX</u>
<b>SURFACE:</b>						
Lead 0 - 400' (100% excess + 50 sx circ to surface)	225	400	Permian Basin Filler 1 + 1/4# Celloflake	10.4	12.8	1.90
Tail 400-800' (100% excess)	250	400	Permian Basin Critical Zone	6.33	14.8	1.35

PRODUCTION: Circulate with Zone Seal Cement.

							<u>COMPRESSIVE</u>	
							<u>Nitrogen</u>	<u>Strength</u>
Base Slurry 3100-7800'	780	4700	Premium Plus + 2% Zone Sealant 2000	6.32	14.5	1.39	175-300 scf/bbl	1200

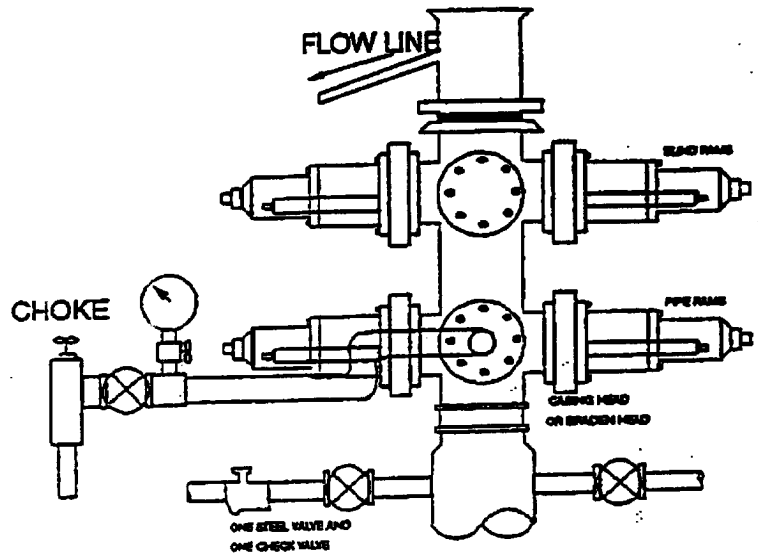
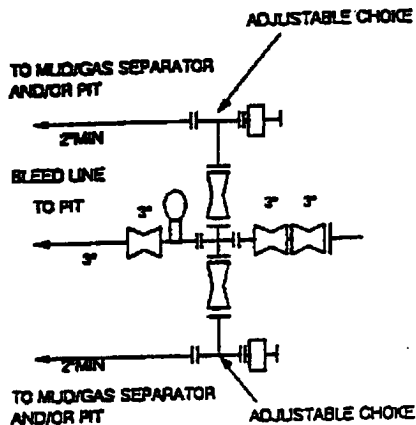
**E) DIRECTIONAL DRILLING**

No directional services anticipated.

**POINT 7: ANTICIPATED RESERVOIR CONDITIONS**

Normal pressures are anticipated throughout Delaware section. A BHP of 3325 psi (max) or MWE of 8.7 ppg is expected. Lost circulation may exist in the Delaware Section from 3583-7350'. No H<sub>2</sub>S is anticipated.

# 2000 PSI WP



THE FOLLOWING CONSTITUTE MINIMUM BLOWOUT PREVENTER REQUIREMENTS

- A. One double gate blowout preventer with lower rams for pipe and upper rams blind, all hydraulically controlled.
- B. Opening on preventers between rams to be flanged, studded or clamped and at least two inches in diameter.
- C. All connections from operating manifold to preventers to be all steel hose or tube a minimum of one inch in diameter.
- D. The available closing pressure shall be at least 15% in excess of that required with sufficient volume to operate (close, open, and re-close) the preventers.
- E. All connections to and from preventers to have a pressure rating equivalent to that of the BOP's.
- F. Manual controls to be installed before drilling cement plug.
- G. Valve to control flow through drill pipe to be located on rig floor.
- H. All chokes will be adjustable. Choke spool may be used between rams.

**DIAGRAM 1**