



OCD-ARTESIA

UNITED STATES
DEPARTMENT OF THE INTERIOR
BUREAU OF LAND MANAGEMENTFORM APPROVED
OMB No. 1004-0136
Expires November 30, 2000

APPLICATION FOR PERMIT TO DRILL OR REENTER

1a. Type of Work: <input checked="" type="checkbox"/> DRILL <input type="checkbox"/> REENTER		5. Lease Serial No. NMLC068545
1b. Type of Well: <input checked="" type="checkbox"/> Oil Well <input type="checkbox"/> Gas Well <input type="checkbox"/> Other <input checked="" type="checkbox"/> Single Zone <input type="checkbox"/> Multiple Zone		6. If Indian, Allottee or Tribe Name
2. Name of Operator BASS ENTERPRISES PRODUCTION CO		7. If Unit or CA Agreement, Name and No. NMNM71016X
Contact: TAMI WILBER E-Mail: twilber@basspet.com		8. Lease Name and Well No. POKER LAKE UNIT 203
3a. Address P O BOX 2760 MIDLAND, TX 79702	3b. Phone No. (include area code) Ph: 432.683.2277 Fx: 432.687.0329	9. API Well No. 30-015-32883
4. Location of Well (Report location clearly and in accordance with any State requirements. *) At surface SWSE 660FSL 1980FEL At proposed prod. zone SWSE 660FSL 1980FEL		10. Field and Pool, or Exploratory NASH DRAW DELAWARE
14. Distance in miles and direction from nearest town or post office* 14 MILES EAST OF MALAGA NM		11. Sec., T., R., M., or Blk. and Survey or Area Sec 7 T24S R30E Mer NMP SME: BLM
15. Distance from proposed location to nearest property or lease line, ft. (Also to nearest drig. unit line, if any) 660	16. No. of Acres in Lease 1843.32	12. County or Parish EDDY
18. Distance from proposed location to nearest well, drilling, completed, applied for, on this lease, ft. 1320	19. Proposed Depth 7700 MD	13. State NM
21. Elevations (Show whether DF, KB, RT, GL, etc.) 3185 GL	22. Approximate date work will start 07/21/2003	17. Spacing Unit dedicated to this well 40.00
23. Estimated duration 12 DAYS		20. BLM/BIA Bond No. On file

24. Attachments

The following, completed in accordance with the requirements of Onshore Oil and Gas Order No. 1, shall be attached to this form:

- | | |
|---|--|
| 1. Well plat certified by a registered surveyor. | 4. Bond to cover the operations unless covered by an existing bond on file (see Item 20 above). |
| 2. A Drilling Plan. | 5. Operator certification |
| 3. A Surface Use Plan (if the location is on National Forest System Lands, the SUPO shall be filed with the appropriate Forest Service Office). | 6. Such other site specific information and/or plans as may be required by the authorized officer. |

25. Signature (Electronic Submission)	Name (Printed/Typed) TAMI WILBER	Date 05/22/2003
Title PRODUCTION CLERK		
Approved by (Signature) /s/ Janice L. Gamby	Name (Printed/Typed) Janice L. Gamby	Date 29 JUL 2003
Title ACTING	Office NM STATE OFFICE	

Application approval does not warrant or certify the applicant holds legal or equitable title to those rights in the subject lease which would entitle the applicant to conduct operations thereon.
Conditions of approval, if any, are attached.

APPROVAL FOR 1 YEAR

Title 18 U.S.C. Section 1001 and Title 43 U.S.C. Section 1212, make it a crime for any person knowingly and willfully to make to any department or agency of the United States any false, fictitious or fraudulent statements or representations as to any matter within its jurisdiction.

Additional Operator Remarks (see next page)

Electronic Submission #22167 verified by the BLM Well Information System
For BASS ENTERPRISES PRODUCTION CO, sent to the Carlsbad
Committed to AFMSS for processing by Linda Askwig on 05/27/2003 (03LA0534AE)APPROVAL SUBJECT TO
GENERAL REQUIREMENTS
AND SPECIAL STIPULATIONS
ATTACHED

** BLM REVISED ** BLM REVISED ** BLM REVISED ** BLM REVISED ** BLM REVISED **

Additional Operator Remarks:

Surface casing to be set into Rustler below all fresh water sands.
Production casing will be cemented using Zone Seal Cement.
Drilling procedure, BOP Diagram, Anticipated tops & Surface plans attached.

This well is located inside the Secretary's Potash area and outside the R-111 Potash Area.
There are no potash leases within 1 mile of this location.

DISTRICT I

1626 N. French Dr., Hobbs, NM 88240

DISTRICT II

811 South First, Artesia, NM 88210

DISTRICT III

1000 Rio Brazos Rd., Aztec, NM 87410

DISTRICT IV

2040 South Pacheco, Santa Fe, NM 87505

State of New Mexico

Energy, Minerals and Natural Resources Department

Form C-102

Revised March 17, 1999

Submit to Appropriate District Office

State Lease - 4 Copies

Fee Lease - 3 Copies

OIL CONSERVATION DIVISION

2040 South Pacheco

Santa Fe, New Mexico 87504-2088

☐ AMENDED REPORT

WELL LOCATION AND ACREAGE DEDICATION PLAT

API Number	Pool Code 47545	Pool Name Nash Draw (Delaware)
Property Code 001796	Property Name POKER LAKE UNIT	Well Number 203
OCRD No. 001801	Operator Name BASS ENTERPRISES PRODUCTION COMPANY	Elevation 3185'

Surface Location

UL or lot No.	Section	Township	Range	Lot Idn	Feet from the	North/South line	Feet from the	East/West line	County
0	7	24 S	30 E		660	SOUTH	1980	EAST	EDDY

Bottom Hole Location If Different From Surface

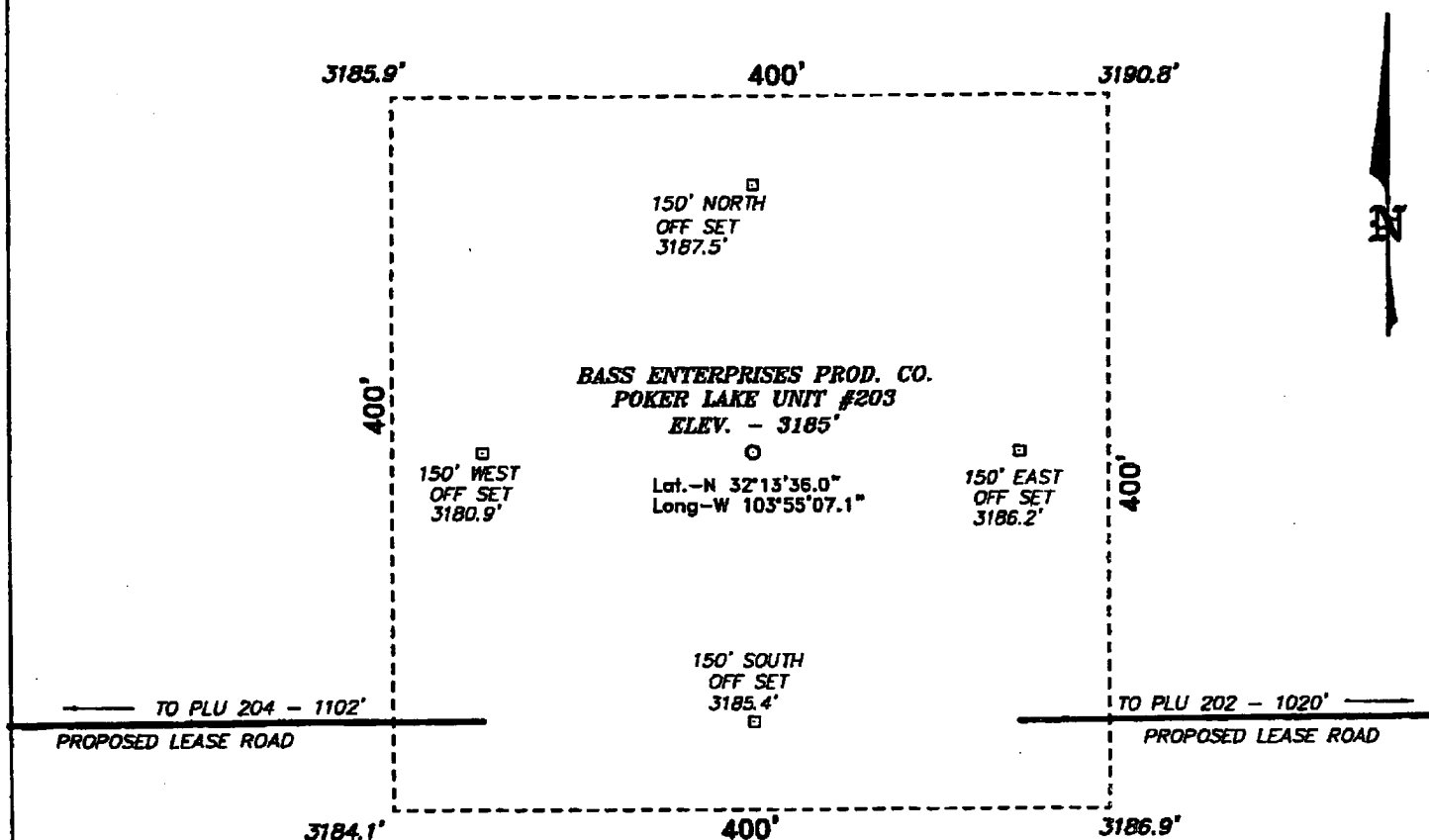
UL or lot No.	Section	Township	Range	Lot Idn	Feet from the	North/South line	Feet from the	East/West line	County

Dedicated Acres 40	Joint or Infill I	Consolidation Code	Order No.
-----------------------	----------------------	--------------------	-----------

NO ALLOWABLE WILL BE ASSIGNED TO THIS COMPLETION UNTIL ALL INTERESTS HAVE BEEN CONSOLIDATED
OR A NON-STANDARD UNIT HAS BEEN APPROVED BY THE DIVISION

	OPERATOR CERTIFICATION I hereby certify the information contained herein is true and complete to the best of my knowledge and belief. Signature W.R. DANNELS Printed Name DIVISION DRILLING SUPT. Title 5/21/03 Date	
	SURVEYOR CERTIFICATION I hereby certify that the well location shown on this plat was plotted from field notes of actual surveys made by me or under my supervision, and that the same is true and correct to the best of my belief. MARCH 10, 2003 Date Surveyed Signature GARY L. JONES PROFESSIONAL SURVEYOR NEW MEXICO No. 4078 Certificate No. Gary L. Jones 7977 PROFESSIONAL SURVEYOR BASIN SURVEYS	

**SECTION 7, TOWNSHIP 24 SOUTH, RANGE 30 EAST, N.M.P.M.,
EDDY COUNTY, NEW MEXICO.**



BASS ENTERPRISES PRODUCTION CO.

REF: POKER LAKE UNIT No. 203 / Well Pad Topo

THE POKER LAKE UNIT No. 203 LOCATED 660' FROM
THE SOUTH LINE AND 1980' FROM THE EAST LINE OF
SECTION 7, TOWNSHIP 24 SOUTH, RANGE 30 EAST,
N.M.P.M., EDDY COUNTY, NEW MEXICO.

BASIN SURVEYS P.O. BOX 1786-HOBBS, NEW MEXICO

W.O. Number: 3078

Drawn By: K. GOAD

Date: 03-11-2003

Disk: KJG CD#7 - 3078A.DWG

Survey Date: 03-10-2003

Sheet 1 of 1 Sheets

**EIGHT POINT DRILLING PROGRAM
BASS ENTERPRISES PRODUCTION CO.**

NAME OF WELL: Poker Lake Unit #203

LEGAL DESCRIPTION - SURFACE: 660' FSL & 1980' FEL, Section 7, T-24-S, R-30-E, Eddy County, New Mexico.

POINT 1: ESTIMATED FORMATION TOPS

(See No. 2 Below)

POINT 2: WATER, OIL, GAS AND/OR MINERAL BEARING FORMATIONS

Anticipated Formation Tops: KB 3203' (est) GL 3185'

<u>FORMATION</u>	<u>ESTIMATED TOP FROM KB</u>	<u>ESTIMATED SUBSEA TOP</u>	<u>BEARING</u>
T/Rustler	328'	+2875	Barren
T/Salt	728'	+2475'	Barren
T/Lwr Brushy Canyon	6966'	-3763'	Oil/Gas
T/Bone Spring	7263'	-4060'	Oil/Gas
TD	7700'	-4497'	

POINT 3: CASING PROGRAM

<u>TYPE</u>	<u>INTERVALS</u>	<u>PURPOSE</u>	<u>CONDITION</u>
16"	0' - 40'	Conductor	Contractor Discretion
8-5/8", 24#, WC-50, LT&C	0' - 675'	Surface	New
5-1/2", 15.5#, K-55, LT&C	0' - 6500'	Production	New
5-1/2", 17#, K-55, LT&C	6500' - 7700'	Production	New

POINT 4: PRESSURE CONTROL EQUIPMENT (SEE ATTACHED DIAGRAM)

A BOP equivalent to Diagram 1 will be nipped up on the surface casing head. The BOP stack choke, kill lines, kelly cocks, inside BOP, etc. will be hydro-tested to 70% of internal yield pressure of casing. In addition to the high pressure test, a low pressure (200 psi) test will be required. These tests will be performed:

- Upon installation
- After any component changes
- Fifteen days after a previous test
- As required by well conditions

A function test to insure that the preventers are operating correctly will be performed on each trip.

POINT 5: MUD PROGRAM

DEPTH	MUD TYPE	WEIGHT	FV	PV	YP	FL	Ph
0' - 675'	FW Spud Mud	8.5 - 9.2	70-38	NC	NC	NC	10.0
675' - 5600'	Brine Water	9.8 -10.2	28-30	NC	NC	NC	9.5-10.5
5600' - TD'	Brine Water/Diesel	8.8 - 9.0	32-40	8	2	<25 cc	9.5 - 10.0

**May increase vis for logging purposes only.*

POINT 6: TECHNICAL STAGES OF OPERATION**A) TESTING**

None anticipated.

B) LOGGING

GR-CNL-LDT-AIT from TD to base of Salt (+/- 3100').
GR-CNL-CAL from base of Salt to surface.

C) CONVENTIONAL CORING

None anticipated.

D) CEMENT

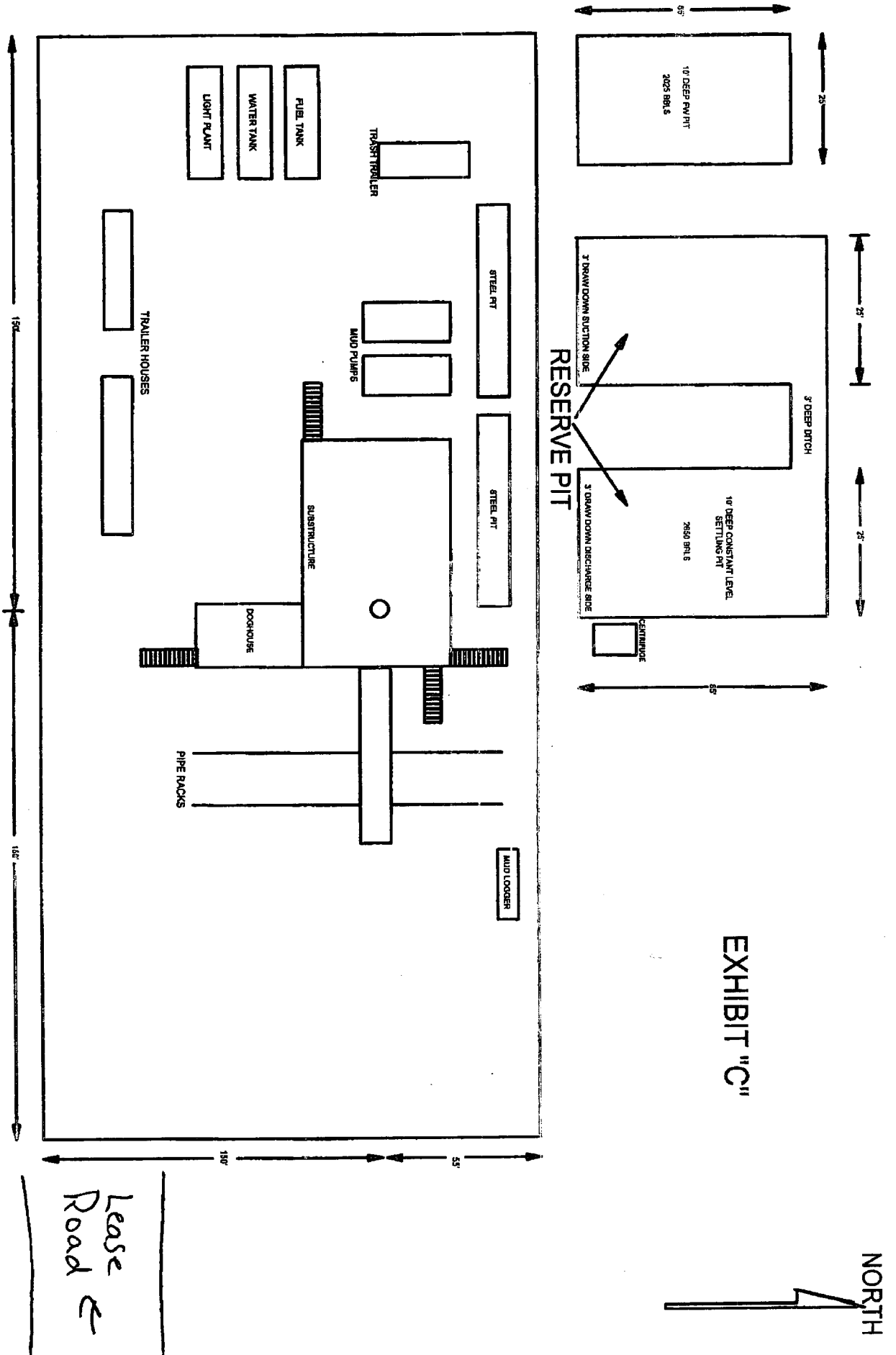
INTERVAL	AMOUNT SXS	FT OF FILL	TYPE	GALS/SX	PPG	FT ³ /SX	COMPRESSIVE Nitrogen Strength	
SURFACE: Lead 0 - 375' (100% excess circ to surface)	163	375	Permian Basin Critical Zone + 1/4# Flocele	10.4	12.8	1.90		
Tail 375-675' (100% excess circ to surface)	233	300	Prem Plus + 2% CaCl ₂ + 1/4# Flocele	6.33	14.8	1.35		
PRODUCTION: Base Slurry w/nitrogen 3050-7700' + (50% excess)	745	4650	Premium Plus + 2% Zone Sealant 2000	6.32	9.1-14.5	2.3-1.39	300/600 scf/bbl	1200

E) DIRECTIONAL DRILLING

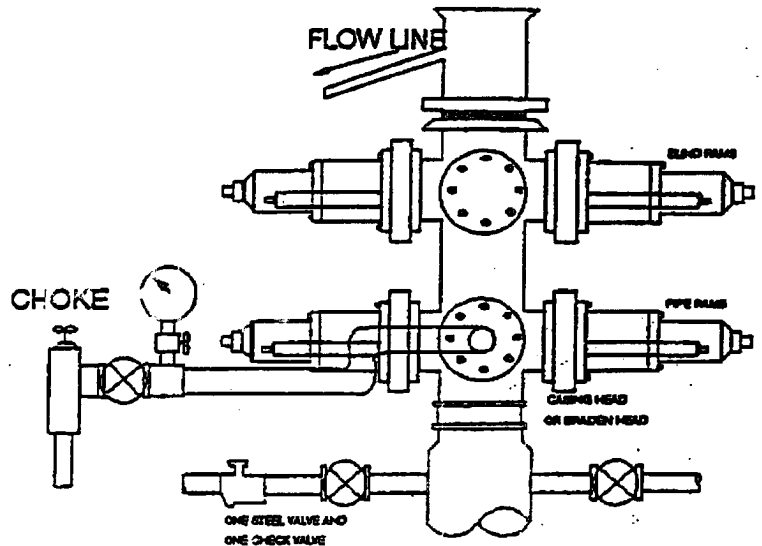
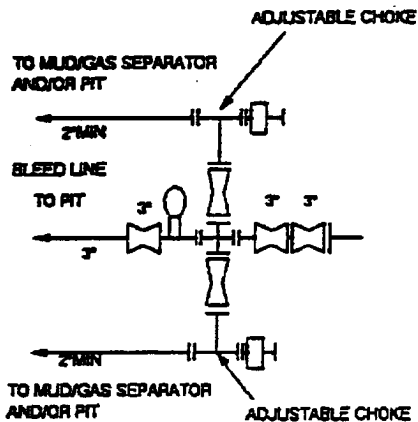
No directional services anticipated.

POINT 7: ANTICIPATED RESERVOIR CONDITIONS

Normal pressures are anticipated throughout Delaware section. A BHP of 3200 psi (max) or MWE of 8.7 ppg is expected. Lost circulation may exist in the Delaware Section from 3583-7350'. No H₂S is anticipated.



2000 PSI WP



THE FOLLOWING CONSTITUTE MINIMUM BLOWOUT PREVENTER REQUIREMENTS

- A. One double gate blowout preventer with lower rams for pipe and upper rams blind, all hydraulically controlled.
- B. Opening on preventers between rams to be flanged, studded or clamped and at least two inches in diameter.
- C. All connections from operating manifold to preventers to be all steel hose or tube a minimum of one inch in diameter.
- D. The available closing pressure shall be at least 15% in excess of that required with sufficient volume to operate (close, open, and re-close) the preventers.
- E. All connections to and from preventers to have a pressure rating equivalent to that of the BOP's.
- F. Manual controls to be installed before drilling cement plug.
- G. Valve to control flow through drill pipe to be located on rig floor.
- H. All chokes will be adjustable. Choke spool may be used between rams.