

**District I**  
1625 N. French Dr., Hobbs, NM 88240  
Phone: (575) 393-6161 Fax: (575) 393-0720  
**District II**  
811 S. First St., Artesia, NM 88210  
Phone: (575) 748-1283 Fax: (575) 748-9720  
**District III**  
1000 Rio Brazos Road, Aztec, NM 87410  
Phone: (505) 334-6178 Fax: (505) 334-6170  
**District IV**  
1220 S. St. Francis Dr., Santa Fe, NM 87505  
Phone: (505) 476-3460 Fax: (505) 476-3462

**NM OIL CONSERVATION State of New Mexico**  
**ARTESIA DISTRICT**  
**Energy Minerals and Natural Resources**  
**OCT 13 2015**  
**Oil Conservation Division**  
**RECEIVED** **1220 South St. Francis Dr.**  
**Santa Fe, NM 87505**

Form C-101  
Revised July 18, 2013

☐ AMENDED REPORT

**APPLICATION FOR PERMIT TO DRILL, RE-ENTER, DEEPEN, PLUGBACK, OR ADD A ZONE**

1. Operator Name and Address BC Operating, Inc. P.O. Box 50820 Midland, Texas 79710		4. OGRID Number 160825
5. Property Code 315313	3. Property Name Man Cave 6 State	6. Well No. 1H

**7. Surface Location**

UL - Lot	Section	Township	Range	Lot Idn	Feet from	N/S Line	Feet From	E/W Line	County
1	7	23S	26E		212	North	300	West	Eddy

**8. Proposed Bottom Hole Location**

UL - Lot	Section	Township	Range	Lot Idn	Feet from	N/S Line	Feet From	E/W Line	County
4	6	23S	26E		240	North	360	West	Eddy

**9. Pool Information**

10. Pool Name WC-015 52326060: WC Wildcat, Wolfcamp (6AS)	11. Pool Code 98170
--	------------------------

**Additional Well Information**

12. Work Type New Well	13. Well Type Gas	14. Cable/Rotary Rotary	15. Lease Type State	16. Ground Level Elevation 3441'
17. Multiple No	18. Proposed Depth 14,084' MD/9000' TVD	19. Formation Wolfcamp	20. Contractor TBD	21. Spud Date 01/01/2016
Depth to Ground water		Distance from nearest fresh water well		Distance to nearest surface water

☒ We will be using a closed-loop system in lieu of lined pits

**22. Proposed Casing and Cement Program**

Type	Hole Size	Casing Size	Casing Weight/ft	Setting Depth	Sacks of Cement	Estimated TOC
Surface	16"	13 3/8"	48#	400'	400	0'
Intermediate	12 1/4"	9 5/8"	40#	5100'	1400	0'
Production	8 3/4"	5 1/2"	17#	14,084'	1800	5000'

**Casing/Cement Program: Additional Comments**

--

**23. Proposed Blowout Prevention Program**

Type	Working Pressure	Test Pressure	Manufacturer
Double Ram Annular	3000#	2000#	Hydrill/Shaeffer

23. I hereby certify that the information given above is true and complete to the best of my knowledge and belief. I further certify that I have complied with 19.15.14.9 (A) NMAC <input checked="" type="checkbox"/> and/or 19.15.14.9 (B) NMAC <input checked="" type="checkbox"/> , if applicable. Signature: <i>Pam Stevens</i>		OIL CONSERVATION DIVISION	
Printed name: Pam Stevens		Approved By: <i>[Signature]</i>	
Title: Regulatory Analyst		Title: <i>Dist. H. Supervisor</i>	
E-mail Address: pstevens@bcoperating.com		Approved Date: 11/5/2015	Expiration Date: 11/5/2017
Date: 09/30/2015	Phone: 432-684-9696	Conditions of Approval Attached - <i>yes</i>	

District I  
1625 N. French Dr., Hobbs, NM 88240  
Phone: (575) 393-6161 Fax: (575) 393-0720  
District II  
811 S. First St., Artesia, NM 88210  
Phone: (575) 748-1283 Fax: (575) 748-9720  
District III  
1000 Rio Brazos Road, Aztec, NM 87410  
Phone: (505) 334-6178 Fax: (505) 334-6170  
District IV  
1220 S. St. Francis Dr., Santa Fe, NM 87505  
Phone: (505) 476-3460 Fax: (505) 476-3462

State of New Mexico  
Energy, Minerals & Natural Resources Department  
OIL CONSERVATION DIVISION  
1220 South St. Francis Dr.  
Santa Fe, NM 87505

Form C-102  
Revised August 1, 2011  
Submit one copy to appropriate  
District Office  
☐ AMENDED REPORT

WELL LOCATION AND ACREAGE DEDICATION PLAT

<sup>1</sup> API Number 30-015-43445		<sup>2</sup> Pool Code 98170		<sup>3</sup> Pool Name WC-015 523260602 Wildcat; Wolfcamp (GAS)	
<sup>4</sup> Property Code 315313		<sup>5</sup> Property Name MAN CAVE 6 STATE			<sup>6</sup> Well Number 1H
<sup>7</sup> GRID No. 160825		<sup>8</sup> Operator Name B.C. OPERATING, INC.			<sup>9</sup> Elevation 3441'

<sup>10</sup> Surface Location

UL or lot no.	Section	Township	Range	Lot Idn	Feet from the	North/South line	Feet from the	East/West line	County
1/D	7	T23S	R26E		212'	NORTH	300'	WEST	EDDY

<sup>11</sup> Bottom Hole Location If Different From Surface

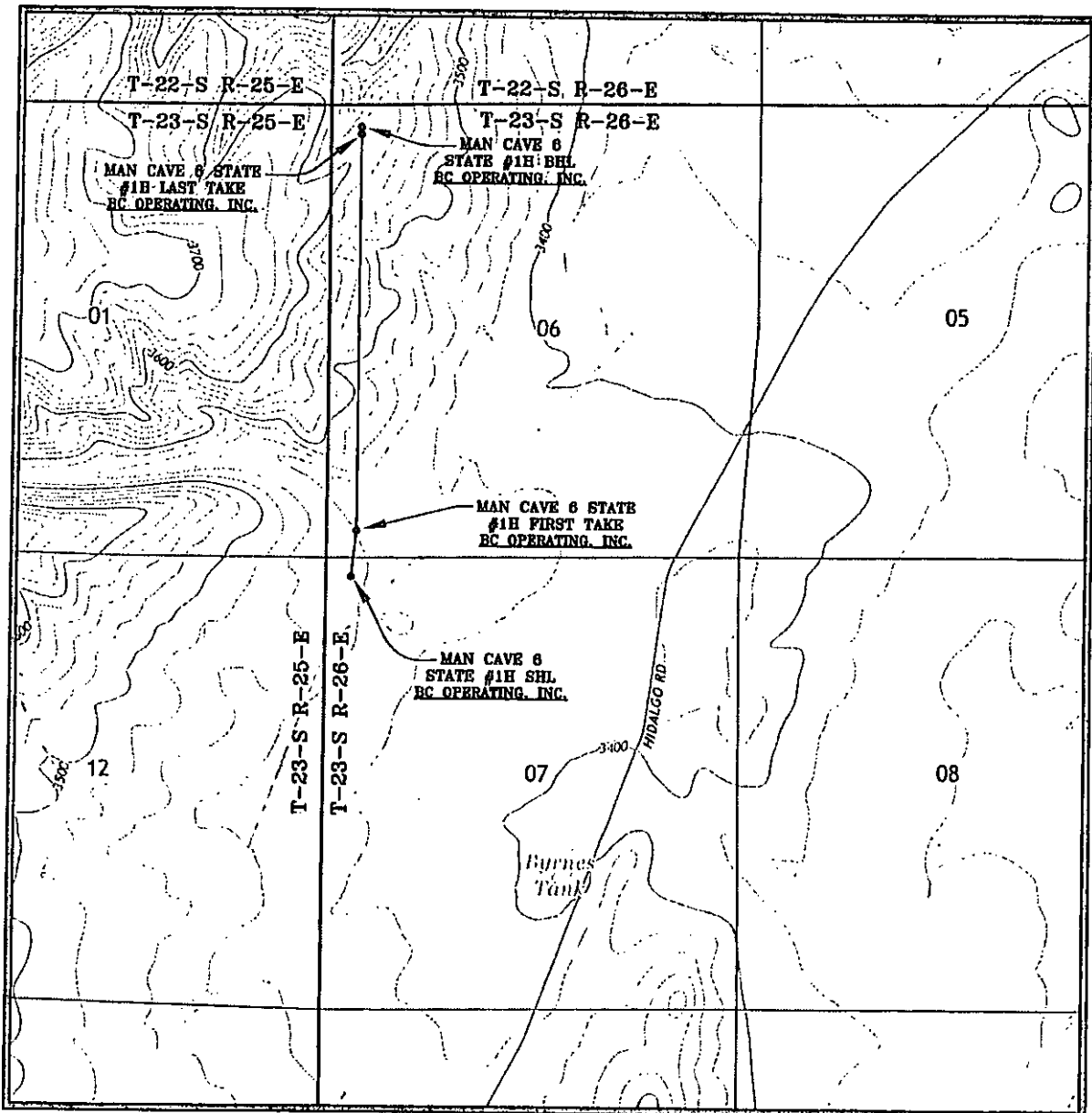
UL or lot no.	Section	Township	Range	Lot Idn	Feet from the	North/South line	Feet from the	East/West line	County
4/D	6	T23S	R26E		240'	NORTH	360'	WEST	EDDY

<sup>12</sup> Dedicated Acres 320.00	<sup>13</sup> Joint or Infill 313.48	<sup>14</sup> Consolidation Code (97748)	<sup>15</sup> Order No.
---	---	---	-------------------------

No allowable will be assigned to this completion until all interests have been consolidated or a non-standard unit has been approved by the division.

<sup>16</sup>		<sup>17</sup> OPERATOR CERTIFICATION I hereby certify that the information contained herein is true and complete to the best of my knowledge and belief, and that this organization either owns a working interest or unleased mineral interest in the land including the proposed bottom hole location or has a right to drill this well at this location pursuant to a contract with an owner of such a mineral or working interest, or to a voluntary pooling agreement or a compulsory pooling order heretofore entered by the division.  Signature: <u>Pam Stevens</u> Date: <u>09/30/15</u> Printed Name: <u>Pam Stevens</u> E-mail Address: <u>pstevens@bcoperating.com</u>	
<sup>18</sup> SURVEYOR CERTIFICATION I hereby certify that the well location shown on this plat was plotted from field notes of actual surveys made by me or under my supervision, and that the same is true and correct to the best of my belief.  Date of Survey: <u>SEPTEMBER 24, 2015</u> Signature and Seal of Professional Surveyor: <u>LLOYD P. SHORT</u>			

# LOCATION VERIFICATION MAP



SEC. 7 TWP. 23 S RGE. 26 E

SURVEY: N.M.P.M.

COUNTY: EDDY

DESCRIPTION: 212' FNL & 300' FWL

ELEVATION: 3441'

OPERATOR: B.C. OPERATING, INC.

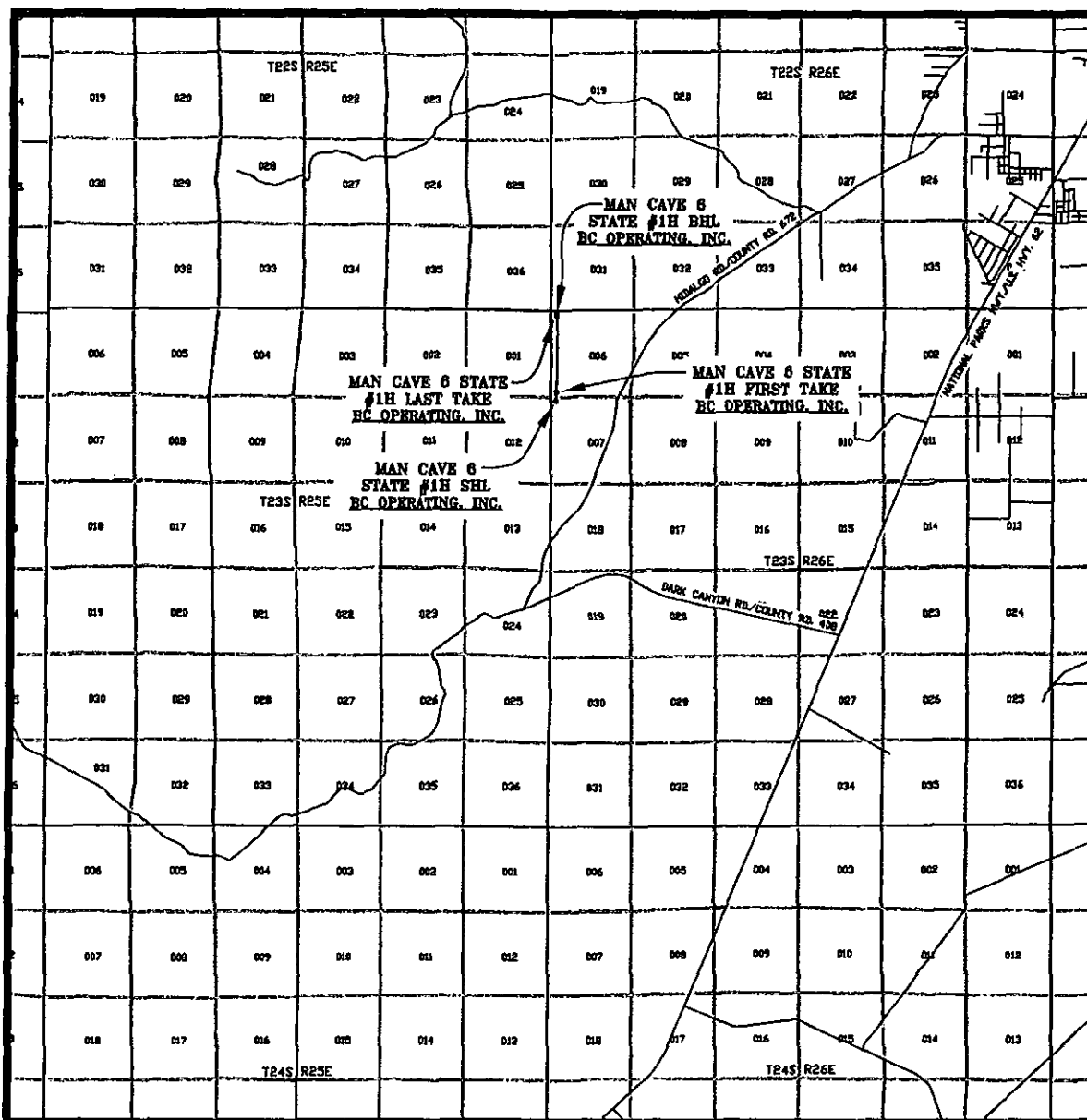
LEASE: MAN CAVE 6 STATE

U.S.G.S. TOPOGRAPHIC MAP: KITCHEN COVE, N.M.

SCALE: 1" = 2000'  
CONTOUR INTERVAL = 20'

PREPARED BY:  
R-SQUARED GLOBAL, LLC  
1309 LOUISVILLE AVENUE, MONROE, LA 71201  
318-323-6900 OFFICE  
JOB No. R3589\_001

# VICINITY MAP



SEC. 7 TWP. 23 S RGE. 26 E  
 SURVEY: N.M.P.M.  
 COUNTY: EDDY  
 DESCRIPTION: 212' FNL & 300' FWL  
 ELEVATION: 3441'  
 OPERATOR: B.C. OPERATING, INC.  
 LEASE: MAN CAVE 6 STATE  
 U.S.G.S. TOPOGRAPHIC MAP: KITCHEN COVE, N.M.

SCALE: 1" = 2 MILES

PREPARED BY:  
 R-SQUARED GLOBAL, LLC  
 1309 LOUISVILLE AVENUE, MONROE, LA 71201  
 318-323-8900 OFFICE  
 JOB No. R3569\_001

NEW MEXICO OIL CONSERVATION DIVISION  
DISTRICT 2 OFFICE  
811 S. FIRST  
ARTESIA, NM 88210  
(575)748-1283

CONDITIONS OF APPROVAL:

NAME OF OPERATOR: BC operating  
WELL NAME & NUMBER: man cave to state 1H  
30-015 - 43445

1. Trucking companies being used to haul oilfield waste to disposal facilities – commercial or private- shall have an approved NMOCD C-133 Permit. A copy of this permit shall be available in each truck used to transport waste products. It is the responsibility of the operator as well as the contractor to verify that this permit is in place. Drivers shall make permit available upon request of an OCD inspector. It is the responsibility of the operator to see to it that waste from their wells is being disposed of in a proper manner.
2. Once well is spud, to prevent groundwater contamination through whole or partial conduits from the surface, the operator shall drill without interruption through the freshwater zone or zones and shall immediately set in cement the water protection string.

INITIALS  
DATE

AD

11/5/2015