

UNITED STATES  
DEPARTMENT OF THE INTERIOR  
BUREAU OF LAND MANAGEMENTNMOCD  
ArtesiaFORM APPROVED  
OMB NO. 1004-0135  
Expires: July 31, 2010**SUNDRY NOTICES AND REPORTS ON WELLS**  
*Do not use this form for proposals to drill or to re-enter an abandoned well. Use form 3160-3 (APD) for such proposals.***SUBMIT IN TRIPLICATE - Other instructions on reverse side.**5. Lease Serial No.  
NMNM117119

6. If Indian, Allottee or Tribe Name

7. If Unit or CA/Agreement, Name and/or No.

8. Well Name and No.  
DELAWARE RANCH 13 B2DA FED COM 1H9. API Well No.  
30-015-43185-00-X110. Field and Pool, or Exploratory  
RED BLUFF11. County or Parish, and State  
EDDY COUNTY, NM

1. Type of Well

☒ Oil Well ☐ Gas Well ☐ Other2. Name of Operator  
MEWBOURNE OIL COMPANYContact: JACKIE LATHAN  
E-Mail: jlathan@mewbourne.com3a. Address  
P O BOX 5270  
HOBBS, NM 882413b. Phone No. (include area code)  
Ph: 575-393-59054. Location of Well (Footage, Sec., T., R., M., or Survey Description)  
Sec 14 T26S R28E NENE 660FNL 185FEL**12. CHECK APPROPRIATE BOX(ES) TO INDICATE NATURE OF NOTICE, REPORT, OR OTHER DATA**

## TYPE OF SUBMISSION

## TYPE OF ACTION

☐ Notice of Intent.☒ Subsequent Report☐ Final Abandonment Notice☐ Acidize☐ Alter Casing☐ Casing Repair☐ Change Plans☐ Convert to Injection☐ Deepen☐ Fracture Treat☐ New Construction☐ Plug and Abandon☐ Plug Back☐ Production (Start/Resume)☐ Reclamation☐ Recomplete☐ Temporarily Abandon☐ Water Disposal☐ Water Shut-Off☐ Well Integrity☒ Other  
Well Spud

13. Describe Proposed or Completed Operation (clearly state all pertinent details, including estimated starting date of any proposed work and approximate duration thereof. If the proposal is to deepen directionally or recompleate horizontally, give subsurface locations and measured and true vertical depths of all pertinent markers and zones. Attach the Bond under which the work will be performed or provide the Bond No. on file with BLM/BIA. Required subsequent reports shall be filed within 30 days following completion of the involved operations. If the operation results in a multiple completion or recompleation in a new interval, a Form 3160-4 shall be filed once testing has been completed. Final Abandonment Notices shall be filed only after all requirements, including reclamation, have been completed, and the operator has determined that the site is ready for final inspection.)

06/20/15 Spud 17 1/2" hole. TD hole @ 245'. Ran 245' of 13 3/8" 48# J55 ST&C & 54.5# J55 ST&C csg.  
Cemented with 300 sks Class C w/1% CaCl2. Mixed @ 14.8 #/g w/1.34 yd. Plug down @ 1:15 AM 06/21/15  
Circ 85 sks of cmt to the pt. Tested BOPE & csg to 1250# for 30 mins, held OK. WOC. Drilled out  
with 12 1/4" bit.

Chart &amp; Schematic Attached.

Bond on file: NM1693 nationwide &amp; NMB000919

NM OIL CONSERVATION  
ARTESIA DISTRICT

NOV 18 2015

RECEIVED

11/20/15  
Accepted for record  
NMOCD

14. I hereby certify that the foregoing is true and correct.

Electronic Submission #307940 verified by the BLM Well Information System  
For MEWBOURNE OIL COMPANY, sent to the Carlsbad/  
Committed to AFMSS for processing by JENNIFER SANCHEZ on 11/10/2015 (16JAS0935SE)

Name (Printed/Typed) JACKIE LATHAN

Title AUTHORIZED REPRESENTATIVE

Signature (Electronic Submission)

Date 07/02/2015

THIS SPACE FOR FEDERAL OR STATE OFFICE USE

Approved By

Title

Conditions of approval, if any, are attached. Approval of this notice does not warrant or certify that the applicant holds legal or equitable title to those rights in the subject lease which would entitle the applicant to conduct operations thereon.

Office

Title 18 U.S.C. Section 1001 and Title 43 U.S.C. Section 1212, make it a crime for any person knowingly and willfully to make to any department or agency of the United States any false, fictitious or fraudulent statements or representations as to any matter within its jurisdiction.

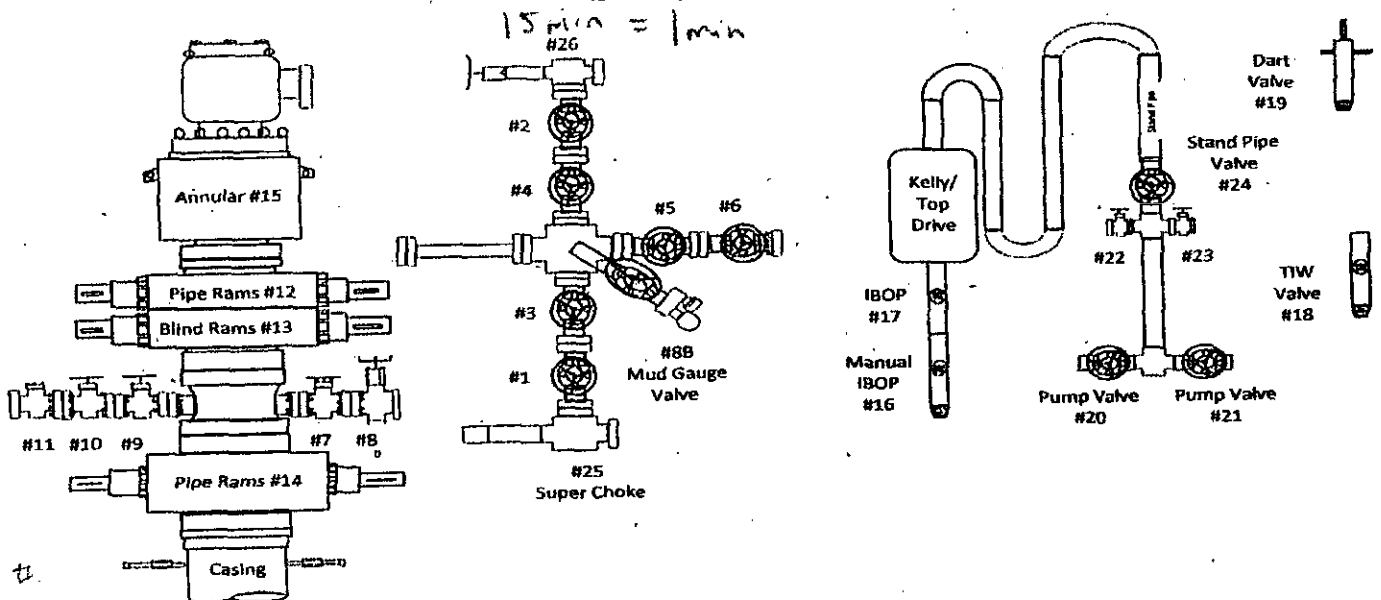
\*\* BLM REVISED \*\* BLM REVISED \*\* BLM REVISED \*\* BLM REVISED \*\* BLM REVISED \*\*



Pg. 1 of 1

Required BOP: \_\_\_\_\_ Installed BOP: \_\_\_\_\_

\*Appropriate Casing Valve Must Be Open During BOP Test\* 24 hr. 91 min. clock \*Check Valve Must Be Open/Disabled To Test Kill Line Valves\*

[illegible]

# MAN WELDING SERVICES, INC

Company Newbourne Oil Co Date 6-25-15

Lease Delaware Ranch 13, BZDA Fed (m) County: Edley Co NM

Drilling Contractor Patterson 310 Plug & Drill Pipe Size 11" C-72 / 4 1/2 XH

Accumulator Pressure: 3000 Manifold Pressure: 1500 Annular Pressure: 1000

## Accumulator Function Test - OO&GO#2

To Check - **USABLE FLUID IN THE NITROGEN BOTTLES** (III.A.2.c.i. or ii or iii)

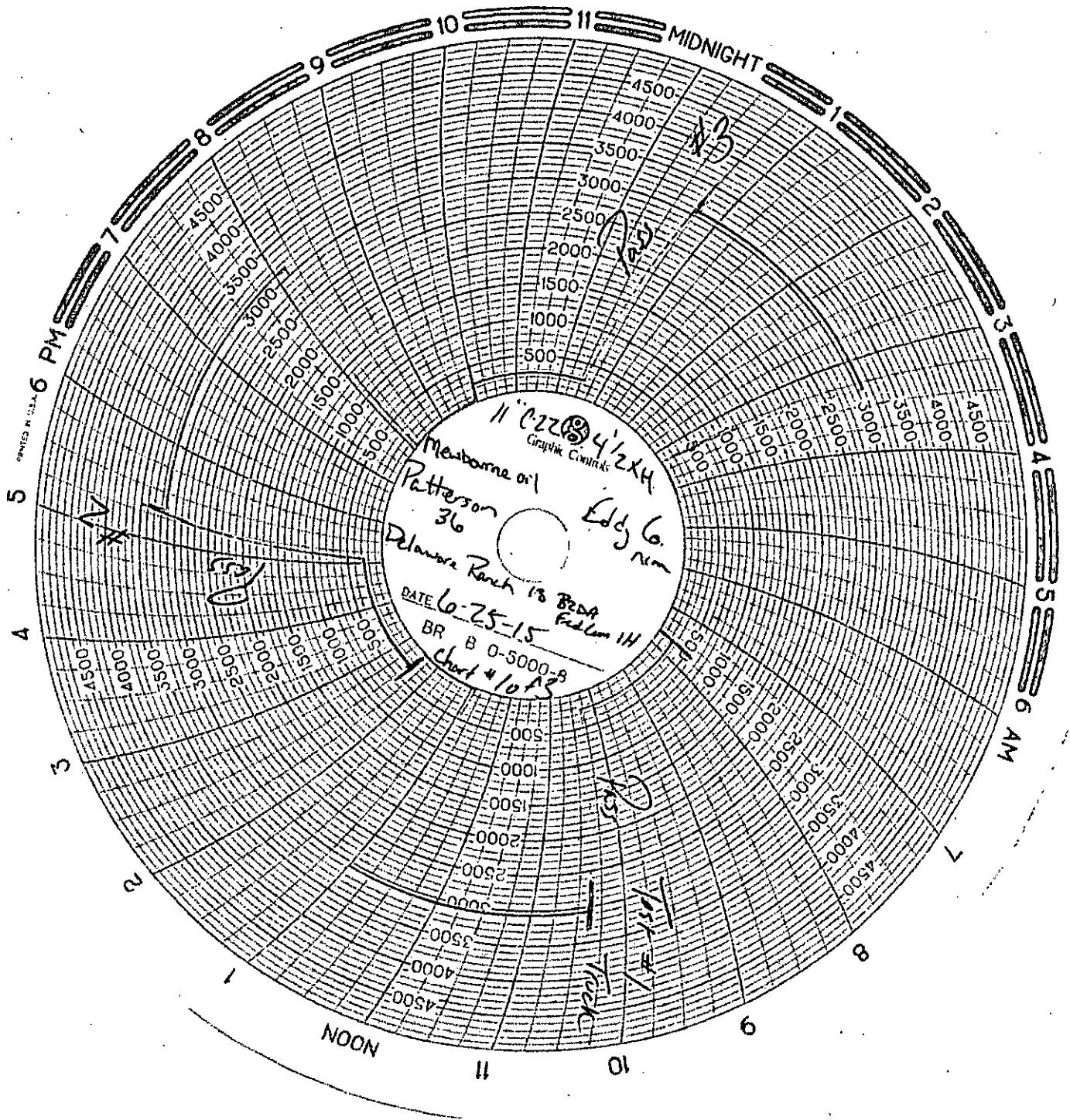
- Make sure all rams and annular are open and if applicable HCR is closed.
- Ensure accumulator is pumped up to working pressure! **(Shut off all pumps)**
  1. Open HCR Valve. (If applicable)
  2. Close annular.
  3. Close **all** pipe rams.
  4. Open one set of the pipe rams to simulate closing the blind ram.
  5. For 3 ram stacks, open the annular to achieve the 50+ % safety factor. (5M and greater systems).
  6. **Record remaining pressure** 1400 psi. **Test Fails if pressure is lower than required.**
    - a. {950 psi for a 1500 psi system} b. {1200 psi for a 2000 & 3000 psi system}
  7. If annular is closed, open it at this time and close HCR.

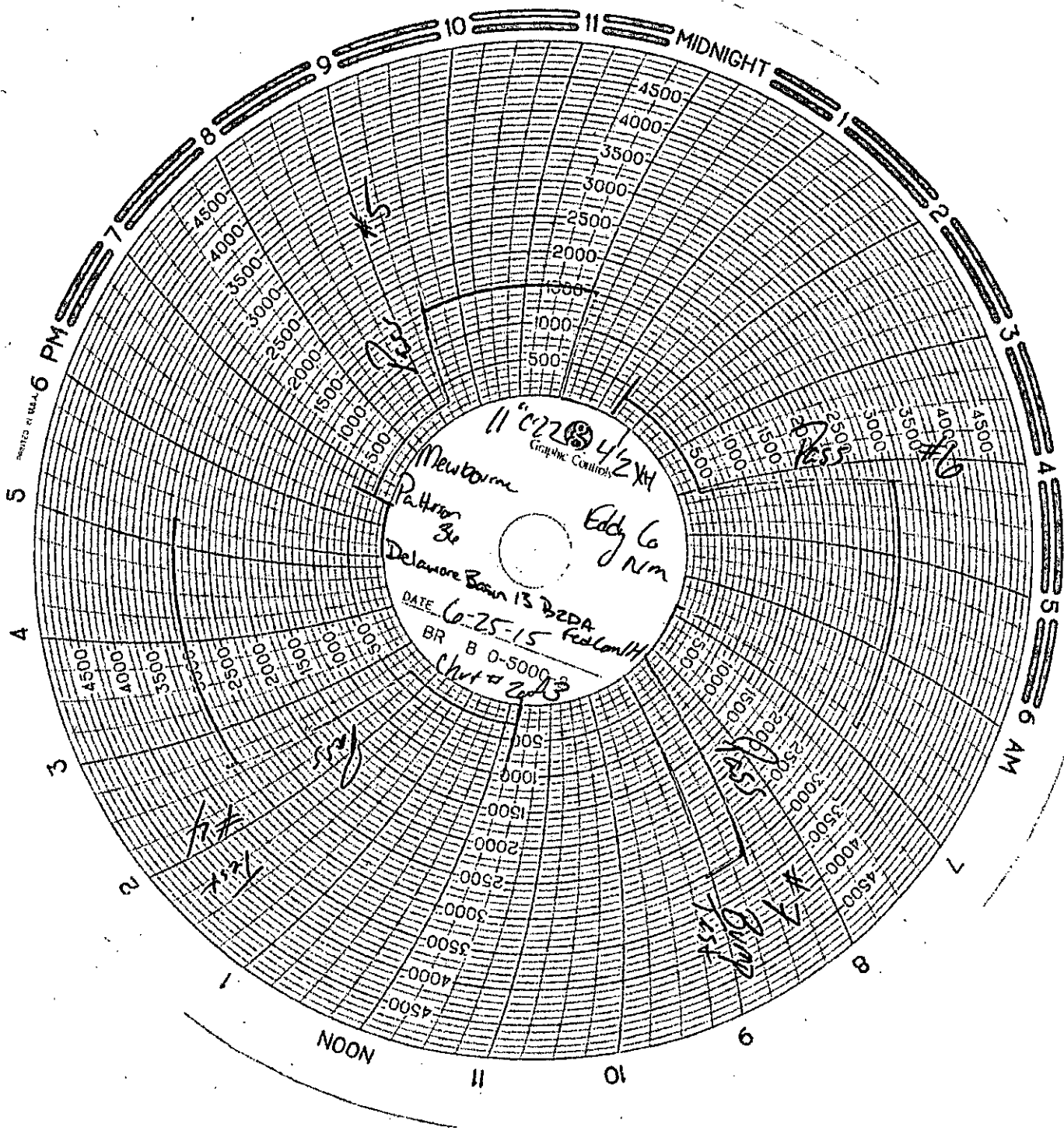
To Check - **PRECHARGE ON BOTTLES OR SPHERICAL** (III.A.2.d.)

- Start with manifold pressure at, or above, maximum acceptable pre-charge pressure:
  - a. {800 psi for a 1500 psi system} b. {1100 psi for 2000 and 3000 psi system}
  1. Open bleed line to the tank; slowly. **(gauge needle will drop at the lowest bottle pressure)**
  2. Close bleed line. Barely bump electric pump and see what pressure the needle jumps up to.
  3. **Record pressure drop** 1000 psi. **Test fails if pressure drops below minimum.**
- **Minimum:** a. {700 psi for a 1500 psi system} b. {900 psi for a 2000 & 3000 psi system}

To Check - **THE CAPACITY OF THE ACCUMULATOR PUMPS** (III.A.2.f.)

- Isolate the accumulator bottles or spherical from the pumps & manifold.
- Open the bleed off valve to the tank, {manifold psi should go to 0 psi} close bleed valve.
  1. Open the HCR valve, {if applicable}
  2. Close annular
  3. With **pumps** only, time how long it takes to regain the required manifold pressure.
  4. **Record elapsed time** min 18 sec. **Test fails if it takes over 2 minutes.**
    - a. {950 psi for a 1500 psi system} b. {1200 psi for a 2000 & 3000 psi system}





NOON

11

10

9

8

7

6 AM

5

4

3

2

1

MIDNIGHT

11

10

9

8

7

6 PM

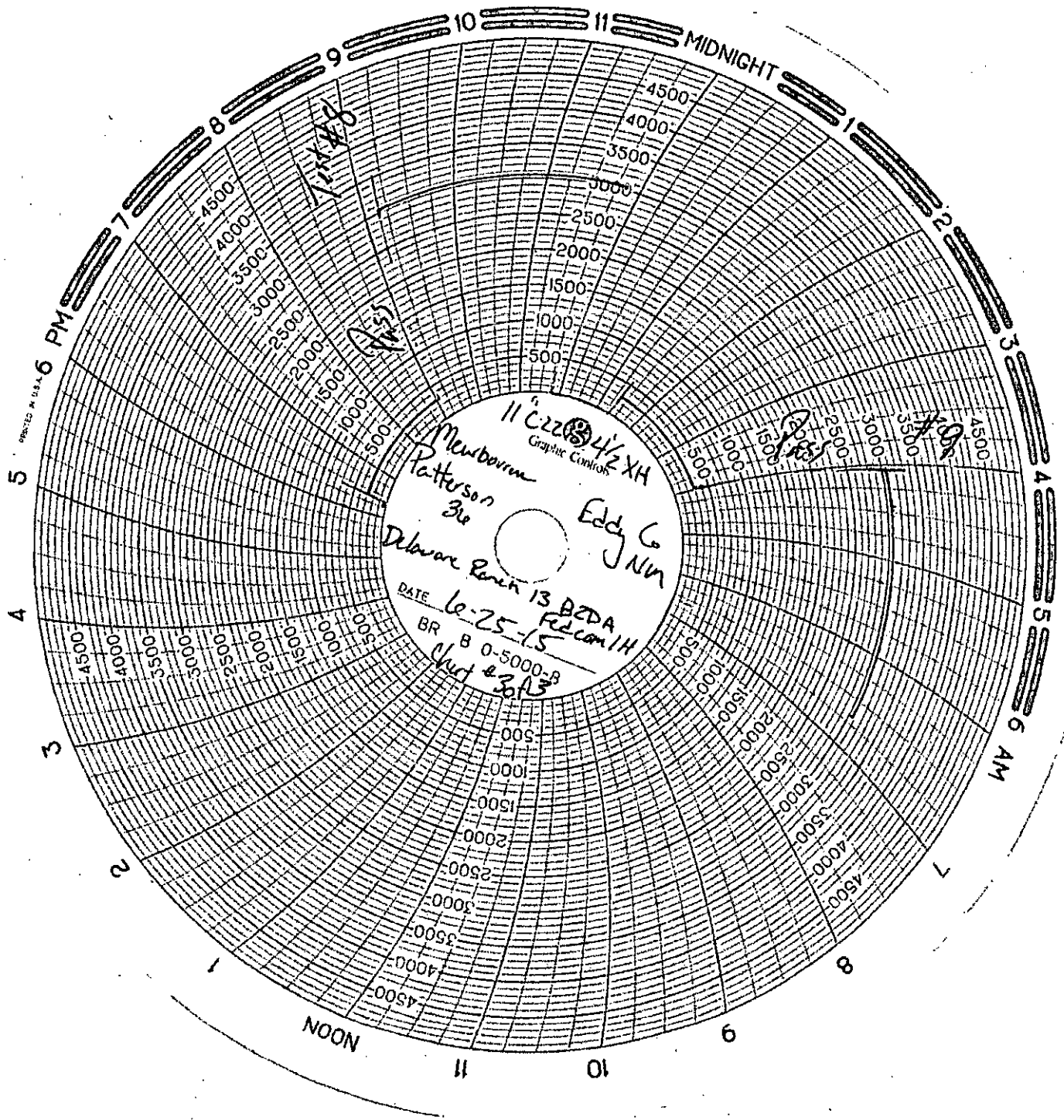
5

4

3

2

1



NOON

MIDNIGHT

6 AM

6 PM

11 C22 4 1/2 XH  
Graphic Controls  
Newbourn  
Patterson 3e  
Eddy 6 JNM  
DATE 6-25-13 B2DA  
BR B 0-5000-3  
Fedcom 1H  
Chart # 313

11/11/13

11/11/13