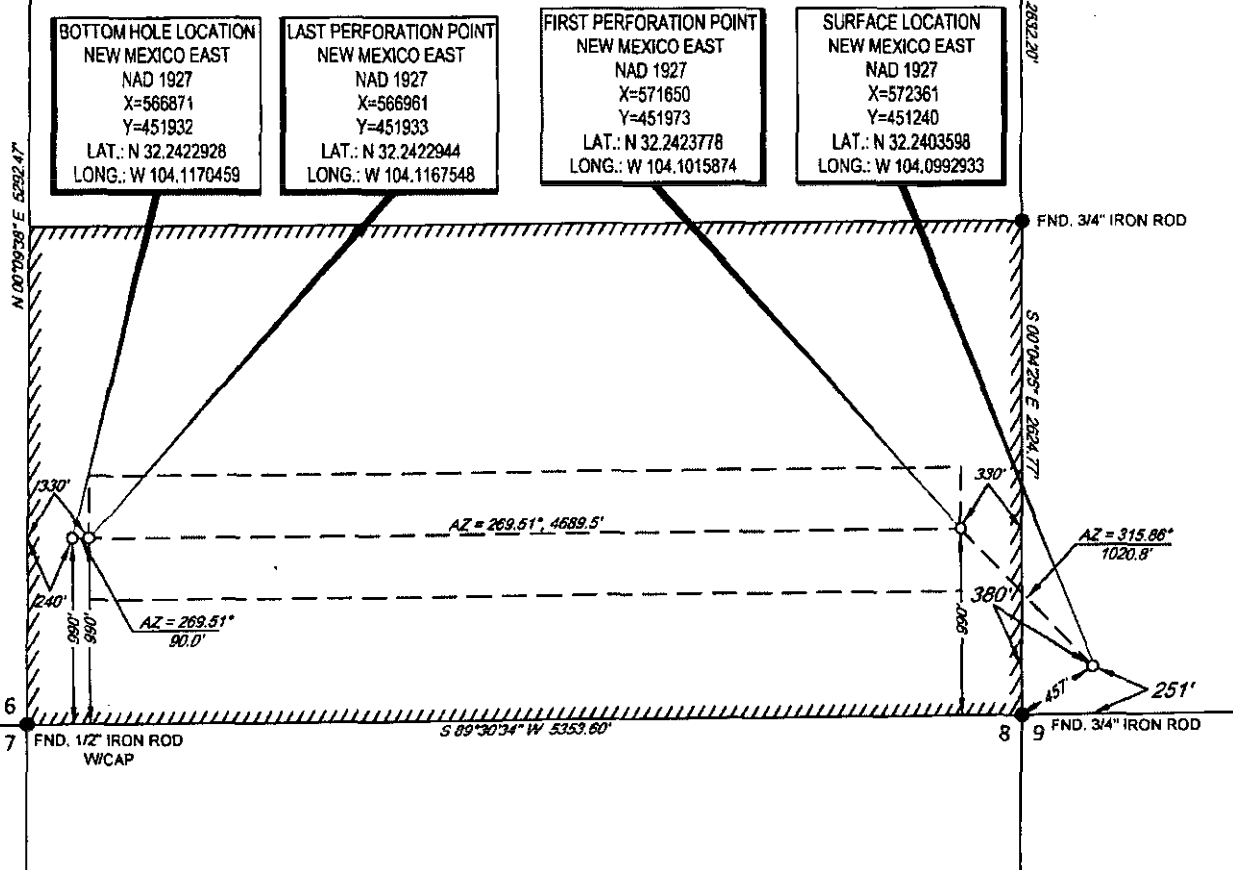


30-015-43478



SCALE: 1" = 1000'

0' 500' 1000'

LEASE NAME & WELL NO.: JIMMY KONE 05-24S-28E RB #224H

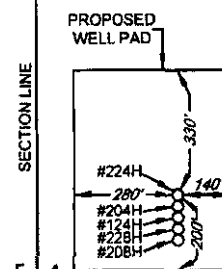
SECTION 4 TWP 24-S RGE 28-E SURVEY N.M.P.M.
 COUNTY EDDY STATE NM
 DESCRIPTION 251' FSL & 380' FWL

DISTANCE & DIRECTION

FROM INT. OF US-285 S. & NM-387. GO SOUTH ON US-285 S ±1.0
 MILES, THENCE SOUTHWEST (RIGHT) ON HIGBY HOLE RD. ±2.2
 MILES TO A POINT ±400 FEET WEST OF THE LOCATION.

ALL BEARINGS, DISTANCES, AND COORDINATE VALUES CONTAINED HEREON ARE GRID
 BASED UPON THE NEW MEXICO STATE PLANE COORDINATE SYSTEM, EAST ZONE OF THE
 NORTH AMERICAN DATUM 1927, U.S. SURVEY FEET

THIS EASEMENT/SERVITUDE LOCATION SHOWN HEREON HAS BEEN SURVEYED ON THE GROUND
 UNDER MY SUPERVISION AND PREPARED ACCORDING TO THE EVIDENCE FOUND AT THE TIME OF
 SURVEY, AND DATA PROVIDED BY MATADOR PRODUCTION COMPANY. THIS CERTIFICATION IS MADE
 AND LIMITED TO THOSE PERSONS OR ENTITIES SHOWN ON THE FACE OF THIS PLAT AND IS
 NON-TRANSFERABLE. THIS SURVEY IS CERTIFIED FOR THIS TRANSACTION ONLY.



DETAIL VIEW
 SCALE: 1" = 500'

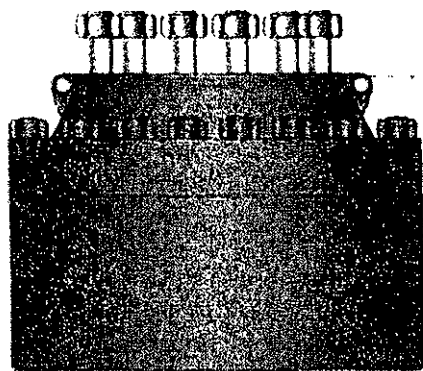


Michael Blake Brown, P.S. No. 18329
 OCTOBER 19, 2015



TOPOGRAPHIC
 LOYALTY INNOVATION LEGACY

1400 EVERMAN PARKWAY, Ste. 197 • FT. WORTH, TEXAS 76140
 TELEPHONE: (817) 744-7512 • FAX (817) 744-7548
 2803 NORTH BIG SPRING • MIDLAND, TEXAS 79705
 TELEPHONE: (432) 682-1653 OR (800) 767-1653 • FAX (432) 682-1743
 WWW.TOPOGRAPHIC.COM



Made by Cameron
(Shaffer Spherical)
Clone Annular

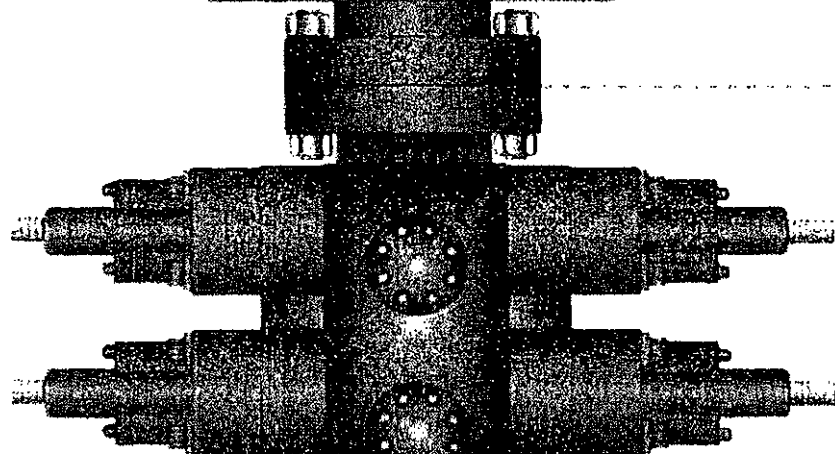
30-015-43478

PATTERSON-UTI # PS2-628

STYLE: New Shaffer Spheric

BORE 13 5/8" PRESSURE 5,000

HEIGHT: 48 1/2" WEIGHT: 13,800



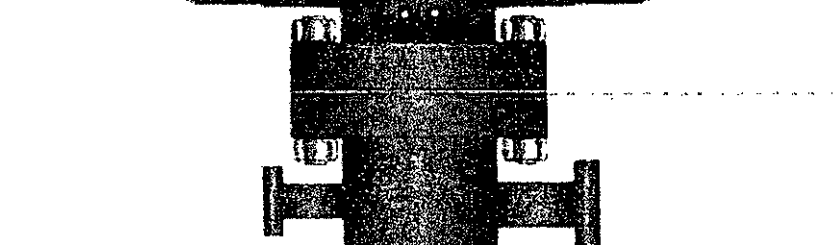
PATTERSON-UTI # PC2-128

STYLE: New Cameron Type

BORE 13 5/8" PRESSURE 10,000

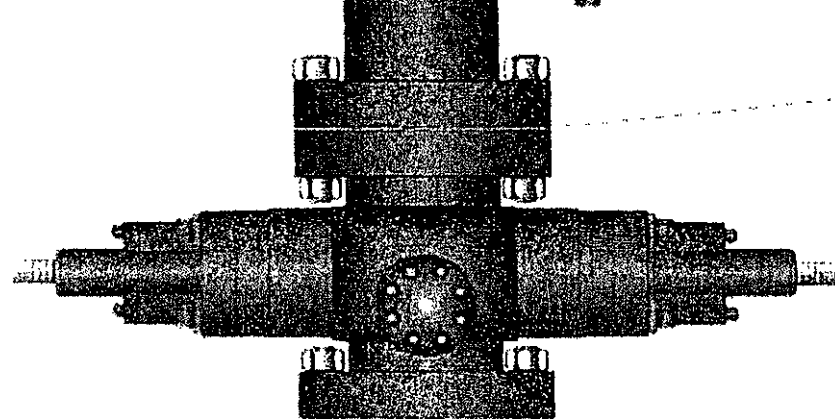
RAMS: TOP 5" Pipe BTM Blin

HEIGHT: 66 5/8" WEIGHT: 24,000



Length 40" Outlets 4" 10M

DSA 4" 10M x 2" 10M



PATTERSON-UTI # PC2-228

STYLE: New Cameron Type

BORE 13 5/8" PRESSURE 10,000

RAMS: 5" Pipe

HEIGHT: 41 5/8" WEIGHT: 13,000

WING VALVES