

UNITED STATES  
DEPARTMENT OF THE INTERIOR  
BUREAU OF LAND MANAGEMENT

NMOCD  
Artesia

FORM APPROVED  
OMB No. 1004-0137  
Expires: July 31, 2010

**SUNDRY NOTICES AND REPORTS ON WELLS**  
**Do not use this form for proposals to drill or to re-enter an abandoned well. Use Form 3160-3 (APD) for such proposals.**

**SUBMIT IN TRIPLICATE** - Other instructions on page 2.

1. Type of Well

☐ Oil Well ☒ Gas Well ☐ Other

2. Name of Operator

Great Western Drilling Company

3a. Address

P. O. Box 1659, Midland, Texas 79707

3b. Phone No. (include area code)

(432)682-5241

4. Location of Well (Footage, Sec., T., R., M., or Survey Description)

1,980' FNL & 660' FEL, Sec. 21, T-6-S, R-25-E (SE 1/4, NE 1/4) (Unit H)

5. Lease Serial No.  
NM-15862

6. If Indian, Allottee or Tribe Name

7. If Unit of CA/Agreement, Name and/or No.  
NM NM 85328

8. Well Name and No.  
Quail Federal Com #9

9. API Well No.  
30-005-62803

10. Field and Pool or Exploratory Area  
Pecos Slope Abo

11. Country or Parish, State  
Chaves, New Mexico

**12. CHECK THE APPROPRIATE BOX(ES) TO INDICATE NATURE OF NOTICE, REPORT OR OTHER DATA**

TYPE OF SUBMISSION	TYPE OF ACTION			
<input checked="" type="checkbox"/> Notice of Intent	<input type="checkbox"/> Acidize	<input type="checkbox"/> Deepen	<input type="checkbox"/> Production (Start/Resume)	<input type="checkbox"/> Water Shut-Off
<input type="checkbox"/> Subsequent Report	<input type="checkbox"/> Alter Casing	<input type="checkbox"/> Fracture Treat	<input type="checkbox"/> Reclamation	<input type="checkbox"/> Well Integrity
<input type="checkbox"/> Final Abandonment Notice	<input type="checkbox"/> Casing Repair	<input type="checkbox"/> New Construction	<input type="checkbox"/> Recomplete	<input type="checkbox"/> Other
	<input type="checkbox"/> Change Plans	<input checked="" type="checkbox"/> Plug and Abandon	<input type="checkbox"/> Temporarily Abandon	
	<input type="checkbox"/> Convert to Injection	<input type="checkbox"/> Plug Back	<input type="checkbox"/> Water Disposal	

13. Describe Proposed or Completed Operation: Clearly state all pertinent details, including estimated starting date of any proposed work and approximate duration thereof. If the proposal is to deepen directionally or recomplete horizontally, give subsurface locations and measured and true vertical depths of all pertinent markers and zones. Attach the Bond under which the work will be performed or provide the Bond No. on file with BLM/BIA. Required subsequent reports must be filed within 30 days following completion of the involved operations. If the operation results in a multiple completion or recompletion in a new interval, a Form 3160-4 must be filed once testing has been completed. Final Abandonment Notices must be filed only after all requirements, including reclamation, have been completed and the operator has determined that the site is ready for final inspection.)

Fill casing with mud consisting of 25 lb/bbl salt gel in 10# brine.  
Set a 20 sack class C cement plug 3,500' to 3,800'. See COA  
Cut the 4 1/2" production casing at 3,300' and pull it from the hole.  
Set a 150 sack class C cement plug 1,400' to 1,600', and tag.  
Set a 150 sack class C cement plug 780' to 980', and tag.  
Set a 45 sack class C cement plug from the surface to 60'.  
Cut off the well head and erect a surface marker.

need Stub Plugs when  
COG is pulled See COA S

NM OIL CONSERVATION  
ARTESIA DISTRICT  
FEB 08 2016

Accepted for record  
NMOCD

RECEIVED

SEE ATTACHED FOR  
CONDITIONS OF APPROVAL  
extra plug needed + changes

14. I hereby certify that the foregoing is true and correct.

Name (Printed/Typed)

CARY BILLINGSLEY

Title

Sr. Area Engineer

Signature

Cary N. Billingsley

Date

1/11/2016

THIS SPACE FOR FEDERAL OR STATE OFFICE USE

Approved by

Title

Office

JAN 28 2016  
Date

BUREAU OF LAND MANAGEMENT  
CARLSBAD FIELD OFFICE

Conditions of approval, if any, are attached. Approval of this notice does not warrant or certify that the applicant holds legal or equitable title to those rights in the subject lease which would entitle the applicant to conduct operations thereon.

Title 18 U.S.C. Section 1001 and Title 43 U.S.C. Section 1212, make it a crime for any person knowingly and willfully to make to any department or agency of the United States any false, fictitious or fraudulent statements or representations as to any matter within its jurisdiction.

(Instructions on page 2)

# Quail Federal Com #9

Well: Quail Federal Com #9  
 Location: 1,980' FNL & 660' FEL  
 Sec 21 T6S R25E  
 Chaves County New Mexico

API# 30-005-62803

Operator: Great Western Drilling Company

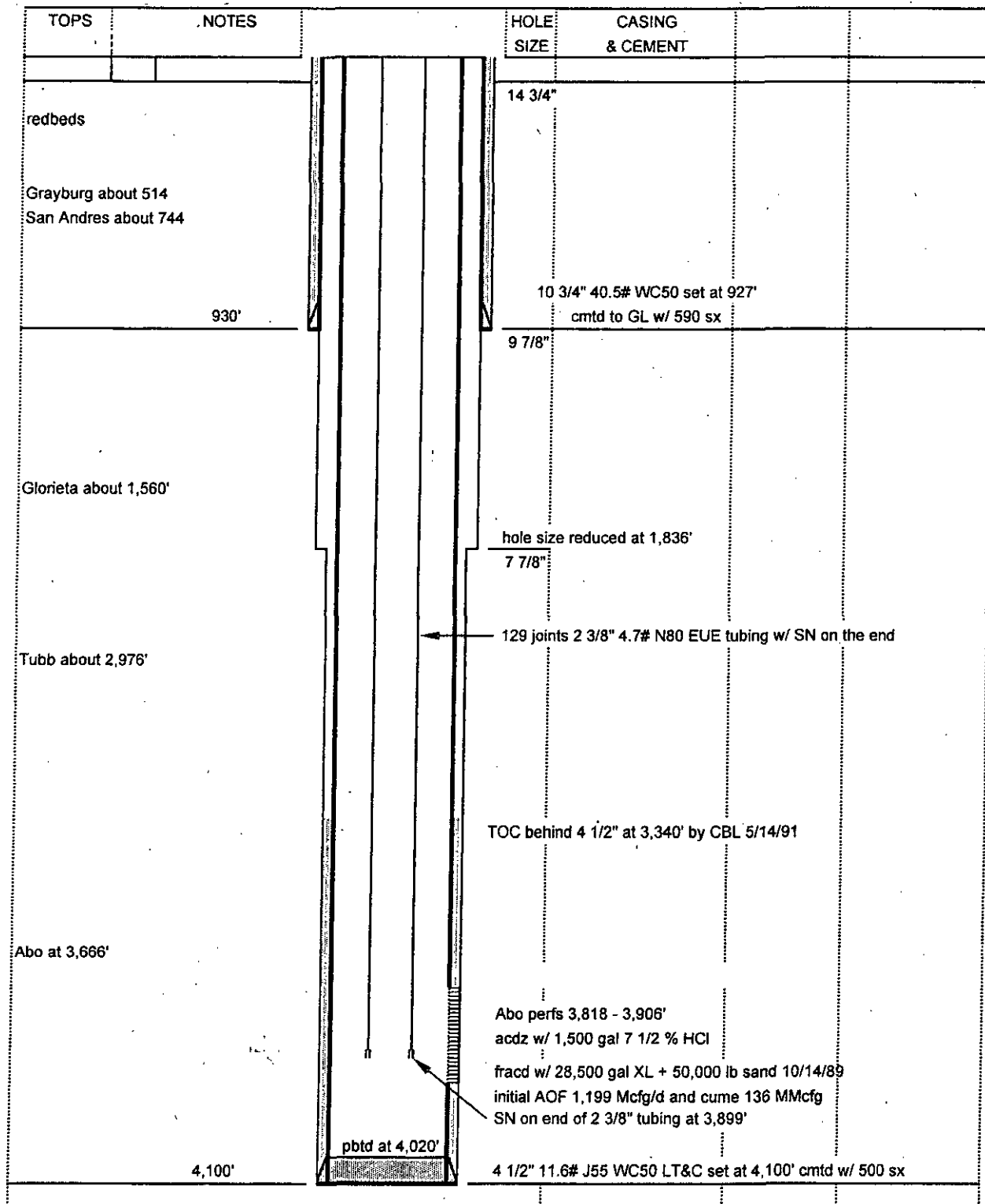
Spud date: 3/28/9991

SI Aug 2010

Elevations: KB 3,997'

KB-GL 8'

GL 3,989'



**Quail Fed Com #9 planned P&A**

Well: Quail Federal Com #9  
Location: 1,980' FNL & 660' FEL  
Sec 21 T6S R25E  
Chaves County New. Mexico  
API# 30-005-62803

Operator: Great Western Drilling Company	
Spud date:	3/28/9991
SI Aug 2010	
Elevations: KB	3,997'
KB-GL	8'
GL	3,989'

TOPS	NOTES	marker	HOLE SIZE	CASING & CEMENT
		45' sx cl C cmt 60'	14 3/4"	
redbeds		mud		
Grayburg about 514				
San Andres about 744		780' 150' sx cl C cmt 980'	10 3/4" 40.5# WC50 set at 927' cmtd to GL w/ 590 sx	
930'		mud	9 7/8"	
		1400' 150' sx cl C cmt 1600'	WOC and tag plug	
Glorieta about 1,560'		mud	hole size reduced at 1,836' 7 7/8"	
Tubb about 2,976'		mud	4 1/2" casing cut at 3,300' and pulled	
			TOC behind 4 1/2" at 3,340' by CBL 5/14/89	
		3,500' 20' sx cl C cmt 3,800'		
Abo at 3,666'		mud	Abo perms 3,818 - 3,906' acdz w/ 1,500 gal 7 1/2 % HCl fracd w/ 28,500 gal XL + 50,000 lb sand 10/14/89 initial AOF 1,199 Mcfg/d and cume 136 MMcfg	
		pbitd at 4,020'	4 1/2" 11.6# J55 WC50 LT&C set at 4,100' cmtd w/ 500 sx	
4,100'				

QUAIL FEDERAL COM #9

PROCEDURE TO PLUG AND ABANDON

The Quail Federal Com #9 was drilled and completed in 1991 with 10 3/4" surface casing set at 927' and 4 1/2" production casing set at 4,100'. The surface casing was cemented to surface and the production casing was cemented back to 3,340'. The 4 1/2" casing was perforated opposite the lower Abo 3,818 – 3,906' and the well was fraced. The well has cumed 136 Mcfg and has not produced since August 2010.

The well is located SE-NE section 21 T6S R25E in Chaves County, New Mexico. Road directions from a point 28 miles north of Roswell on highway 285 and CR C-38A (Dona Ana Road) at milepost 139.5. Turn off Hwy 285 right and go east on CR C-38A 7.90 miles to a fork. Angle left at the fork and go northeast 2.48 miles to a pipeline crossing. Turn off right and follow the pipeline road southeast 3.46 miles. Turn left and go east 0.50 miles. Turn right and go 1.64 miles south-southwest to a north-south road. Turn left and go south 0.32 miles to a cattle guard. Cross the cattle guard and bear to the right and go 0.14 miles to a fork. Turn right and go west 0.27 miles to the Quail Federal #2 well. Continue west 0.11 miles to a cattle guard and then turn left and go southwest 0.42 miles to Quail Federal #3. Continue southwest 0.10 miles and to a dead "T", turn right and go west-northwest 0.95 miles. Turn off left and go 0.50 miles southwest to the location.

TUBULAR SPECIFICATIONS

10 3/4" 40.5# WC50	ID 10.05"	burst ±1,500 psi	capacity 4.121 gal/ft
4 1/2" 11.6# J	ID 4.892"	burst 5,350 psi	capacity 0.976 gal/ft
2 3/8" 4.7# J	ID 1.995"	burst 7,700 psi	capacity 0.162 gal/ft
4 1/2" x 2 3/8" annulus			capacity 0.423 gal/ft

PROCEDURE

1. Notify the BLM of the plugging operation.
2. MIRU a well service unit with a mast capacity of at least 100,000 lb. mast capacity and auxiliary equipment:
  - BOP at least 2M rated
  - pump with at least 75 HP and 100 GPM capacity
  - one steel pit with 250 bbls capacity
  - a centrifugal pump and mixing hopper
3. Mix a pit of mud consisting of 10# brine with 25 lbs/bbl salt gel. NU a return line from the 2 3/8" x 4 1/2" annulus to the steel working pit. Circulate the well full of mud (±100 bbl).
4. Drop a standing valve and pressure test the tubing to 500 psi. Fish the standing valve with the sand line. If the tubing will not test, trip the tubing to eliminate the leakage.
5. NU a BOP at least 2M rated. RU a well plugging contractor.
6. Swing the end of the tubing at 3,800' (just above the perfs) and spot a balanced cement plug from 3,800' back to 3,500' with 20 sacks of class C cement. POH.
7. Close the BOP and pressure test the 4 1/2" casing to 500 psi.
8. RU wire line and cut the 4 1/2" casing at ±3,300'.
9. Pull and lay out the 4 1/2" casing.
10. RIH with the end of the tubing to just below 1,600' and spot a balanced cement plug from ≥1,600' back to ±1,400' with 150 sacks of class C cement = 2% CaCl<sub>2</sub>. POH and WOC until the surface sample is firm.
11. RIH and tag the top of the cement plug near 1,400'.

## **Cure Consulting, Inc.**

12. RIH with the end of the tubing to just below 980' and spot a balanced cement plug from  $\geq 980'$  back to  $\pm 780'$  with 150 sacks of class C cement + 2%  $\text{CaCl}_2$ . POH and WOC until the surface sample is firm.
13. RIH and tag the cement plug near 780'.
14. RIH with the end of the tubing to just below 60' and circulate cement to the surface with 45 sacks of class C cement.
15. RDMO well service unit and equipment.
16. Use a welder to cut off the casings and weld a cap plate and erect a dry hole surface marker.
17. Clean the location. Rip the location road and access road and seed per BLM specifications.

**Quail Federal Com 9  
30-005-62803  
Great Western Drilling Company  
January 28, 2016  
Conditions of Approval**

- 1. Operator shall place CIBP at 3,768' (50'-100' above top most perf) and place 20sx of Class C cement on top. WOC and TAG a minimum of 3,500' to seal the top of the Abo formation.**
- 2. Operator is approved to pull casing at 3,300'. Operator shall place Class C cement plug at 3,370' (70' below the cut casing) – 3,230' (70' above cut casing). WOC and TAG required.**
- 3. Operator shall place a balanced Class C cement plug from 1,600'-1,400' to seal the top of the Yates as proposed.**
- 4. Operator shall place a balanced Class C cement plug from 980'-780' to seal the surface casing stub. WOC and TAG required.**
- 5. Operator shall place a balanced Class C cement plug from 60'- surface as proposed**
- 6. See Attached for general plugging stipulations.**

**JAM 012016**

**BUREAU OF LAND MANAGEMENT**  
**Roswell Field Office**  
**2909 West Second Street**  
**Roswell, New Mexico 88201**  
**(575) 627-0272**

**Permanent Abandonment of Federal Wells**  
**Conditions of Approval**

Failure to comply with the following Conditions of Approval may result in a Notice of Incidents of Noncompliance (INC) in accordance with 43 CFR 3163.1.

1. Plugging operations shall commence within **ninety (90)** days from the approval date of this Notice of Intent to Abandon. **If you are unable to plug the well by the 90<sup>th</sup> day provide the BLM Roswell Field Office (RFO), prior to the 90<sup>th</sup> day, with the reason for not meeting the deadline and a date when the BLM Roswell Field Office can expect the well to be plugged. Failure to do so will result in enforcement action. Unless the well has been properly plugged, the rig shall not be removed from over the hole without prior approval.**

2. Notification: Contact the BLM Roswell Field Office at least 24 hours prior to the commencing of any plugging operations. For wells in Chaves and Roosevelt County, during office hours or after office hours call (575) 627-0205. Engineer on call during office hours phone (575) 627-0275 or phone (after hours) call (575) 626-5749.

3. Blowout Preventers: A blowout preventer (BOP), as appropriate, shall be installed before commencing any plugging operation. The minimum BOP requirement is a 2M system for a well not deeper than 9090 feet; a 3M system for a well not deeper than 13636 feet; and a 5M system for a well not deeper than 22727 feet.

4. Mud Requirement: Mud shall be placed between all plugs. Minimum consistency of plugging mud shall be obtained by mixing at a rate of 25 sacks (50 pounds each) of gel per 100 barrels of water. Minimum nine (9) pounds per gallon.

5. Cement Requirement: Sufficient cement shall be used to bring any required plug to the specified depth and length. Any given cement volumes on the proposed plugging procedure are merely estimates and not final. Unless specific approval is received, no plug except the surface plug shall be less than 25 sacks of cement. In lieu of a cement plug in cased hole, a bridge plug set within 50 feet to 100 feet above the perforations shall be capped with 50 feet of cement. If a bailer is used to cap this plug, 35 feet of cement shall be sufficient.

Unless otherwise specified in the approved procedure, the cement plug shall consist of either class "C" for up to 7500 feet of depth, mixed at 14.8 lbs./gal with 6.3 gallons of fresh water per sack or class "H" for deeper than 7500 feet plugs, mixed at 16.4 lbs./gal with 4.3 gallons of fresh water per sack.

6. Monument: Upon abandonment of the well, all casing shall be cut-off at the base of the cellar or 3-feet below final restored ground level (whichever is deeper). The well bore shall then be covered with a metal plate at least ¼ inch thick and welded in place. The following information shall be permanently inscribed on the dry hole marker: Well name and number, the name of the operator, the lease serial number, the surveyed location (the quarter-quarter section, township and range or other authorized survey designation acceptable to the authorized officer; such as metes and bounds).

7. Subsequent Plugging Reporting: Within 30 days after plugging work is completed, file one original and five copies of the Subsequent Report of Abandonment, Form 3160-5 to the BLM Roswell Field Office. The report should give in detail the manner in which the plugging work was carried out, the extent (by depths) of cement plugs placed, and the size and location (by depths) of casing left in the well. **Show date well was plugged.**

Following the submittal and approval of the Subsequent Report of Abandonment, a Notice of Intent for Final Abandonment with the proposed surface restoration procedure must be submitted for approval.