

NM OIL CONSERVATION ARTESTA DISTRICT

DISTRICT I
1625 N. French Dr., Hobbs, NM 88240
Phone: (575) 393-6161 Fax: (575) 393-4720
DISTRICT II
811 S. First St., Artesia, NM 88210
Phone: (575) 748-1283 Fax: (575) 748-9720
DISTRICT III
1000 Rao Benos Rd., Artesia, NM 87410
Phone: (505) 334-6178 Fax: (505) 334-6170
DISTRICT IV
1220 S. St. Francis Dr., Santa Fe, NM 87505
Phone: (505) 476-3460 Fax: (505) 476-3462

FEB 29 2016
RECEIVED

State of New Mexico
Energy, Minerals & Natural Resources Department
OIL CONSERVATION DIVISION
1220 South St. Francis Dr.
Santa Fe, New Mexico 87505

Form C-102
Revised August 1, 2011
Submit one copy to appropriate
District Office
☐ AMENDED REPORT

WELL LOCATION AND ACREAGE DEDICATION PLAT AS DRILLED

API Number 30-015-42236	Pool Code 15011	Pool Name UNDESIGNATED BONE SPRING
Property Code 38684	Property Name LONGVIEW FEDERAL 12	Well Number 2H
OGRID No. 246289	Operator Name RKI EXPLORATION & PRODUCTION	Elevation 3023'

Surface Location

UL or lot no.	Section	Township	Range	Lot Idn	Feet from the	North/South line	Feet from the	East/West line	County
B	12	23 S	28 E		780	NORTH	1854	EAST	EDDY

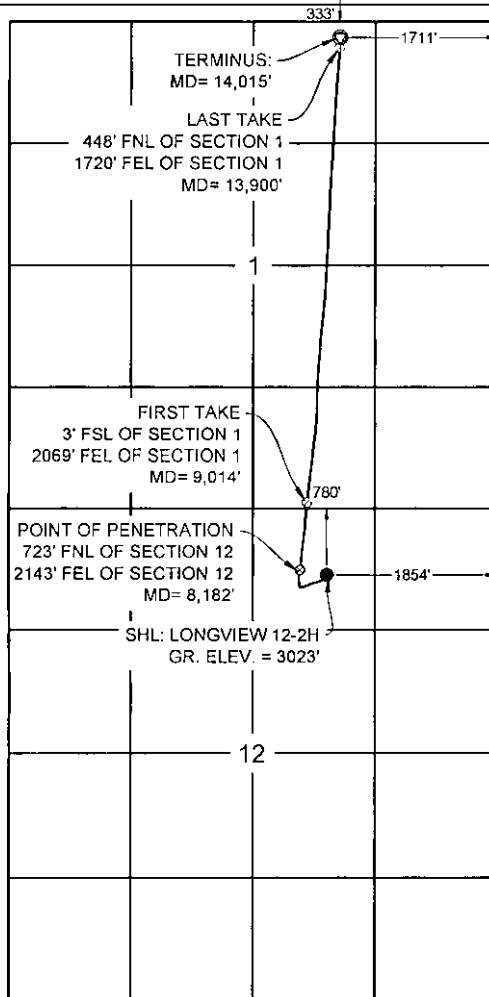
Bottom Hole Location If Different From Surface

UL or lot no.	Section	Township	Range	Lot Idn	Feet from the	North/South line	Feet from the	East/West line	County
B	1	23 S	28 E		333	NORTH	1711	EAST	EDDY

Dedicated Acres	Joint or Infill	Consolidated Code	Order No.

No allowable will be assigned to this completion until all interests have been consolidated or a non-standard unit has been approved by the division.

TERMINUS 12- 2H MD = 14,015
NMSP-E (NAD 83)
N (Y) = 487963.6'
E (X) = 632703.6'
LAT. = 32°20'28.09" N
LONG. = 104°02'14.97" W
NMSP-E (NAD 27)
N (Y) = 487903.9'
E (X) = 591521.0'
LAT. = 32.3410155° N
LONG. = 104.0369978° W
LAST TAKE POINT MD = 13,365'
NMSP-E (NAD 83)
N (Y) = 487849.1'
E (X) = 632694.2'
LAT. = 32°20'26.96" N
LONG. = 104°02'15.09" W
NMSP-E (NAD 27)
N (Y) = 487789.3'
E (X) = 591511.7'
LAT. = 32.3407007° N
LONG. = 104.0370291° W
FIRST TAKE POINT MD = 9,014'
NMSP-E (NAD 83)
N (Y) = 482978.3'
E (X) = 632352.9'
LAT. = 32°19'38.77" N
LONG. = 104°02'19.22" W
NMSP-E (NAD 27)
N (Y) = 482918.6'
E (X) = 591170.2'
LAT. = 32.3273141° N
LONG. = 104.0381781° W
POINT OF PENETRATION MD = 8,182'
NMSP-E (NAD 83)
N (Y) = 482252.1'
E (X) = 632277.0'
LAT. = 32°19'31.58" N
LONG. = 104°02'20.13" W
NMSP-E (NAD 27)
N (Y) = 482192.5'
E (X) = 591094.3'
LAT. = 32.3253185° N
LONG. = 104.0384302° W
LONGVIEW FEDERAL 12-12H SHL:
GR. ELEV. = 3023'
NMSP-E (NAD 83)
N (Y) = 482199.1'
E (X) = 632565.9'
LAT. = 32°19'31.05" N
LONG. = 104°02'16.76" W
NMSP-E (NAD 27)
N (Y) = 482139.5'
E (X) = 591383.2'
LAT. = 32.3251707° N
LONG. = 104.0374955° W



OPERATOR CERTIFICATION

I hereby certify that the information contained herein is true and complete to the best of my knowledge and belief, and that this organization either owns a working interest or unleased mineral interest in the land including the proposed bottom hole location or has a right to drill this well at this location pursuant to a contract with an owner of such a mineral or working interest, or to voluntary pooling agreement or a compulsory pooling order heretofore entered by the division.

Heather Brehm 2.22.2016
Signature Date

Heather Brehm

Print Name

heather.brehm@wpenergy.com

E-mail Address

SURVEYORS CERTIFICATION

I hereby certify that the well location shown on this plat was plotted from field notes of actual surveys made by me or under my supervision, and that the same is true and correct to the best of my belief.

FEBRUARY 17, 2016

Date of Survey

Signature and Seal of Professional Surveyor

James E. Tompkins
Job No. WTC51062
JAMES E. TOMPKINS 14729
Certificate Number

