

District I
1625 N. French Dr., Hobbs, NM 88240
Phone: (575) 393-6161 Fax: (575) 393-0720
District II
811 S. First St., Artesia, NM 88210
Phone: (575) 748-1283 Fax: (575) 748-9720
District III
1000 Rio Brazos Road, Aztec, NM 87410
Phone: (505) 334-6178 Fax: (505) 334-6170
District IV
1220 S. St. Francis Dr., Santa Fe, NM 87505
Phone: (505) 476-3460 Fax: (505) 476-3462

State of New Mexico
Energy Minerals and Natural Resources
NM OIL CONSERVATION
ARTESIA DISTRICT
Oil Conservation Division
1220 South St. Francis Dr.
Santa Fe, NM 87505

Form C-101
Revised July 18, 2013

MAR 14 2016

☐ AMENDED REPORT

RECEIVED

APPLICATION FOR PERMIT TO DRILL, RE-ENTER, DEEPEN, PLUGBACK, OR ADD A ZONE

¹ Operator Name and Address Larry Marker DBA Marker Oil PO Box 3188 Roswell, NM 88202		² OGRID Number 290537
⁴ Property Code 316065		³ API Number 30 015 43603
⁵ Property Name Burnham Grayburg San Andres		⁶ Well No. 5A

7. Surface Location

UL - Lot N	Section 2	Township 17S	Range 30E	Lot Idn	Feet from 677	N/S Line S	Feet From 2000	E/W Line W	County Eddy
---------------	--------------	-----------------	--------------	---------	------------------	---------------	-------------------	---------------	----------------

8. Proposed Bottom Hole Location

UL - Lot	Section	Township	Range	Lot Idn	Feet from	N/S Line	Feet From	E/W Line	County
----------	---------	----------	-------	---------	-----------	----------	-----------	----------	--------

9. Pool Information

Pool Name Square Lake Grayburg San Andres	Pool Code 57570
----------------------------------------------	--------------------

Additional Well Information

¹¹ Work Type N	¹² Well Type O	¹³ Cable/Rotary R	¹⁴ Lease Type S	¹⁵ Ground Level Elevation 3746
¹⁶ Multiple	¹⁷ Proposed Depth 3200	¹⁸ Formation GB-SA	¹⁹ Contractor UDI	²⁰ Spud Date March 31, 2016
Depth to Ground water 110'		Distance from nearest fresh water well >1000'		Distance to nearest surface water >1000'

xx We will be using a closed-loop system in lieu of lined pits

21. Proposed Casing and Cement Program

Type	Hole Size	Casing Size	Casing Weight/ft	Setting Depth	Sacks of Cement	Estimated TOC
Cond.	17.25	13 3/8	48	42	40	0
Surf	11	8 5/8"	24	1400	500	0
Prod	7 7.8	5 1/2"	15.5	3200	620	0

Casing/Cement Program: Additional Comments

--

22. Proposed Blowout Prevention Program

Type	Working Pressure	Test Pressure	Manufacturer
Double Ram	2000	1500	Cameron

²³ I hereby certify that the information given above is true and complete to the best of my knowledge and belief.
I further certify that I have complied with 19.15.14.9 (A) NMAC ☐ and/or 19.15.14.9 (B) NMAC ☐, if applicable.
Signature: _____

Printed name: Phelps White

Title: Consultant

E-mail Address: pwiv@zianet.com

Date: 3/8/16

Phone: 575 626 7660

OIL CONSERVATION DIVISION

Denier

Conditions of Approval Attached

FS 3/24/16

DISTRICT I
1625 N. French Dr., Hobbs, NM 88240
Phone: (575) 393-6161 Fax: (575) 393-0720

DISTRICT II
811 S. First St., Artesia, NM 88210
Phone: (575) 748-1283 Fax: (575) 748-9720

DISTRICT III
1000 Rio Brazos Road, Aztec, NM 87410
Phone: (505) 334-6178 Fax: (505) 334-6170

DISTRICT IV
1220 S. St. Francis Dr., Santa Fe, NM 87505
Phone: (505) 476-3460 Fax: (505) 476-3462

State of New Mexico
Energy, Minerals & Natural Resources Department
OIL CONSERVATION DIVISION
1220 South St. Francis Dr.
Santa Fe, New Mexico 87505

NM OIL CONSERVATION

ARTESIA DISTRICT

Form C-102

Revised August 1, 2011

MAR 14 2016 Submit one copy to appropriate District Office

RECEIVED

☐ AMENDED REPORT

WELL LOCATION AND ACREAGE DEDICATION PLAT

API Number 30015 45603	Pool Code 57570	Pool Name SQUARE LAKE GRAYBURG SAN ANDRES
Property Code 316 065	Property Name BURNHAM GRAYBURG SAN ANDRES	
OGRID No. 290537	Operator Name LARRY MARKER DBA MARKER OIL	Well Number 5K
		Elevation 3746'

Surface Location

UL or lot No. N	Section 2	Township 17-S	Range 30-E	Lot Idn	Feet from the 677	North/South line SOUTH	Feet from the 2000	East/West line WEST	County EDDY
---------------------------	---------------------	-------------------------	----------------------	---------	-----------------------------	----------------------------------	------------------------------	-------------------------------	-----------------------

Bottom Hole Location If Different From Surface

UL or lot No.	Section	Township	Range	Lot Idn	Feet from the	North/South line	Feet from the	East/West line	County
Dedicated Acres 40		Joint or Infill	Consolidation Code	Order No.					

NO ALLOWABLE WILL BE ASSIGNED TO THIS COMPLETION UNTIL ALL INTERESTS HAVE BEEN CONSOLIDATED OR A NON-STANDARD UNIT HAS BEEN APPROVED BY THE DIVISION

4 39.90 AC.	3 39.87 AC.	2 39.83 AC.	1 39.80 AC.
GEODETIC COORDINATES NAD 83 NME SURFACE LOCATION Y= 676139.3 N X= 660686.5 E LAT.=32.858126° N LONG.=103.944659° W		GEODETIC COORDINATES NAD 27 NME SURFACE LOCATION Y= 676075.5 N X= 619507.7 E LAT.=32.858010° N LONG.=103.944152° W	

OPERATOR CERTIFICATION

I hereby certify that the information herein is true and complete to the best of my knowledge and belief, and that this organization either owns a working interest or unleased mineral interest in the land including the proposed bottom hole location or has a right to drill this well at this location pursuant to a contract with an owner of such mineral or working interest, or to a voluntary pooling agreement or a compulsory pooling order heretofore entered by the division.

R 3-11-16
Signature Date

PETERS White
Printed Name

Pwiv@zianet.com
E-mail Address

SURVEYOR CERTIFICATION

I hereby certify that the well location shown on this plat was plotted from field notes of actual surveys made by me or under my supervision, and that the same is true and correct to the best of my belief.

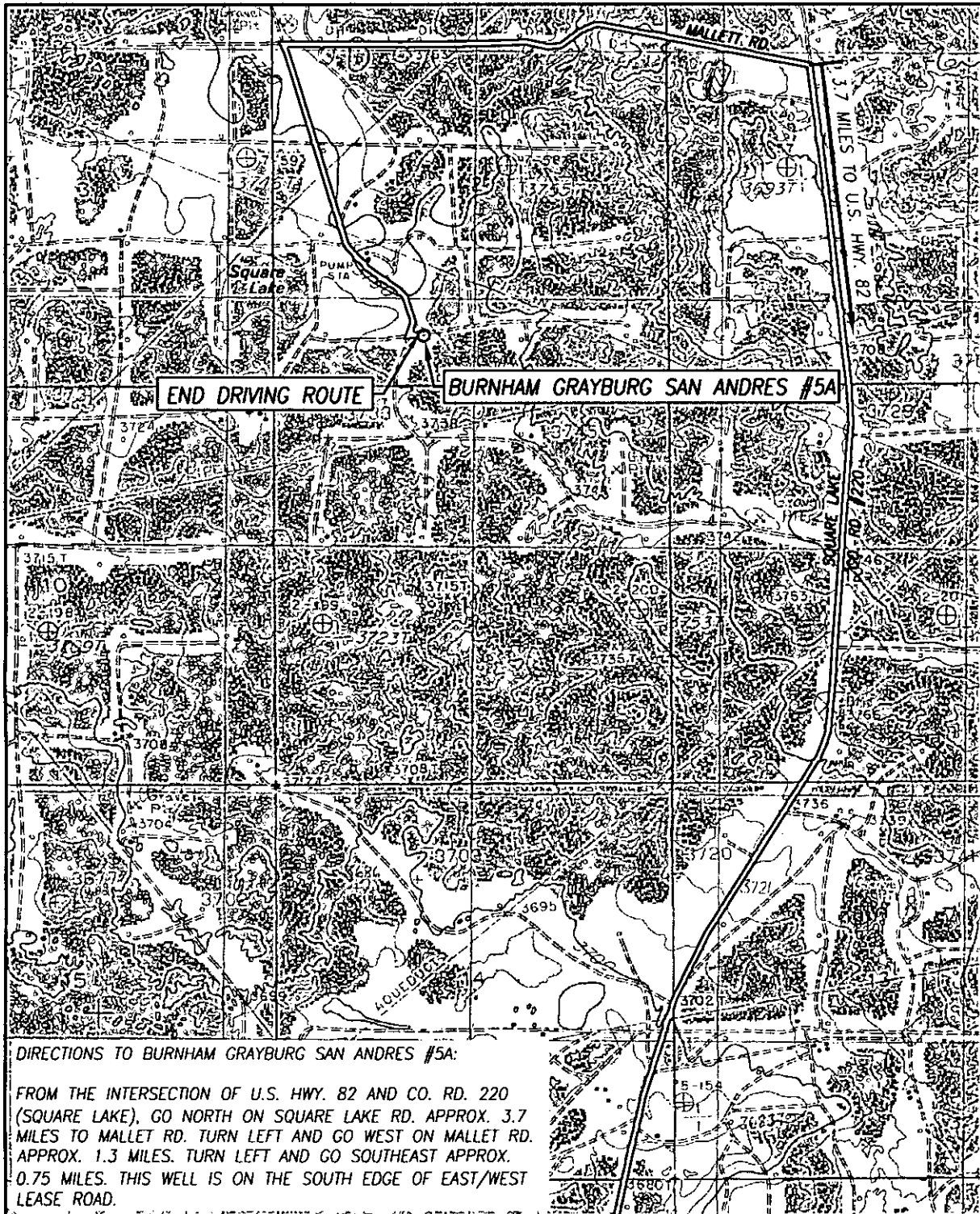
Date of Survey
Signature & Seal of Professional Surveyor
RONALD J. EIDSON
REGISTERED PROFESSIONAL SURVEYOR
3239

Ronald J. Eidson 3/10/2016

Certificate Number
Gary G. Eidson 12641
Ronald J. Eidson 3239

ACK JWSC W.O.: 16.11.0217

TOPOGRAPHICAL AND ACCESS ROAD MAP



SEC. 2 TWP. 17-S RGE. 30-E
 COUNTY EDDY STATE NEW MEXICO
 DESCRIPTION 677' FSL & 2000' FWL
 ELEVATION 3746'
 OPERATOR LARRY MARKER DBA MARKER OIL
 LEASE BURNHAM GRAYBURG SAN ANDRES
 U.S.G.S. TOPOGRAPHIC MAP
 LOCO HILLS, N.M. SURVEY N.M.P.M.

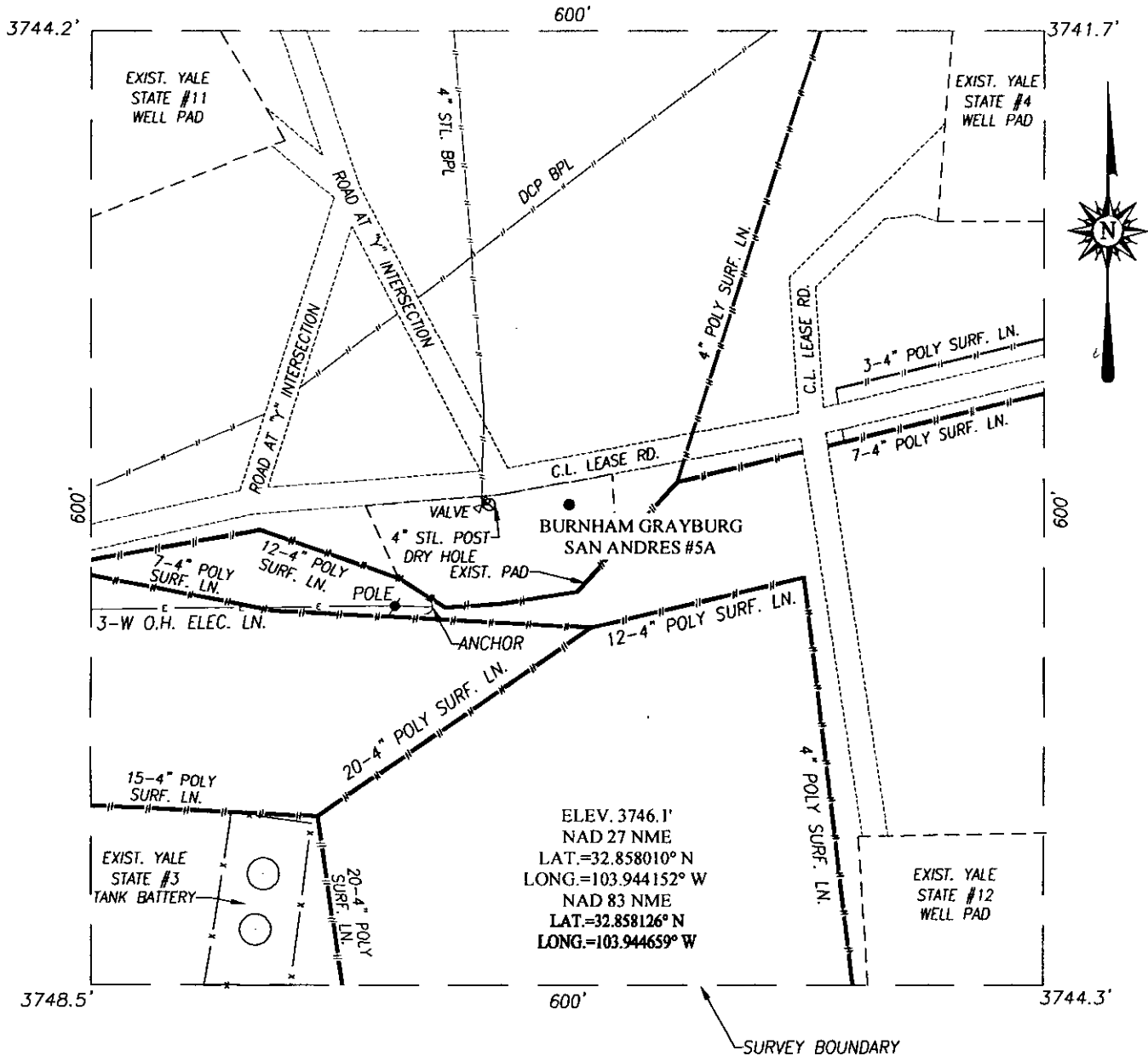
SCALE: 1" = 2000'

CONTOUR INTERVAL:
 LOCO HILLS, N.M. - 10'



PROVIDING SURVEYING SERVICES
 SINCE 1946
JOHN WEST SURVEYING COMPANY
 412 N. DAL PASO HOBBS, N.M. 88240
 (575) 393-3117 www.jwsc.biz
 TBPLS# 10021000

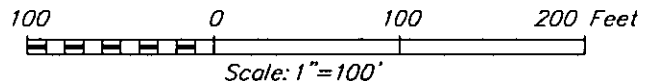
WELL SITE PLAN



NOTE:
SEE "TOPOGRAPHICAL AND ACCESS ROAD
MAP" FOR PROPOSED ROAD LOCATION.

DIRECTIONS TO BURNHAM GRAYBURG SAN ANDRES #5A:

FROM THE INTERSECTION OF U.S. HWY. 82 AND CO. RD. 220 (SQUARE LAKE), GO NORTH ON SQUARE LAKE RD. APPROX. 3.7 MILES TO MALLETT RD. TURN LEFT AND GO WEST ON MALLETT RD. APPROX. 1.3 MILES. TURN LEFT AND GO SOUTHEAST APPROX. 0.75 MILES. THIS WELL IS ON THE SOUTH EDGE OF EAST/WEST LEASE ROAD.



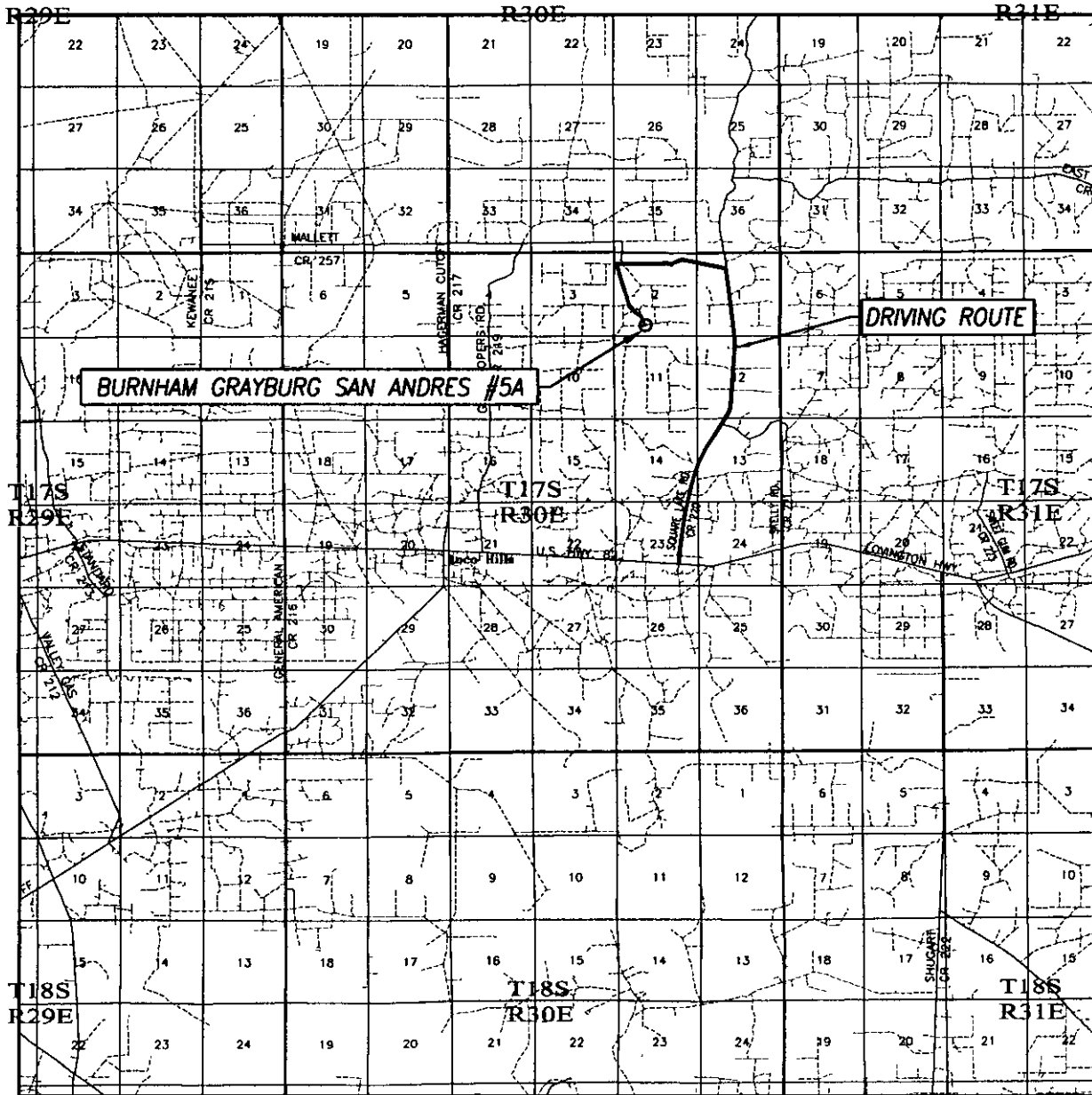
LARRY MARKER DBA MARKER OIL

**BURNHAM GRAYBURG SAN ANDRES #5A WELL
LOCATED 677 FEET FROM THE SOUTH LINE
AND 2000 FEET FROM THE WEST LINE OF SECTION 2,
TOWNSHIP 17 SOUTH, RANGE 30 EAST, N.M.P.M.,
EDDY COUNTY, NEW MEXICO**

Survey Date: 3/10/16	CAD Date: 3/10/16	Drawn By: ACK
W.O. No.: 16110217	Rev: .	Rel. W.O.: Sheet 1 of 1

PROVIDING SURVEYING SERVICES
SINCE 1946
JOHN WEST SURVEYING COMPANY
412 N. DAL PASO HOBBS, N.M. 88240
(575) 393-3117 www.jwsc.biz
TBPLS# 10021000

VICINITY MAP



SCALE: 1" = 2 MILES

DRIVING ROUTE: SEE TOPOGRAPHICAL AND ACCESS ROAD MAP

SEC. 2 TWP. 17-S RGE. 30-E

SURVEY N.M.P.M.

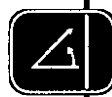
COUNTY EDDY STATE NEW MEXICO

DESCRIPTION 677' FSL & 2000' FWL

ELEVATION 3746'

OPERATOR LARRY MARKER DBA MARKER OIL

LEASE BURNHAM GRAYBURG SAN ANDRES



PROVIDING SURVEYING SERVICES
SINCE 1946

JOHN WEST SURVEYING COMPANY

412 N. DAL PASO HOBBS, N.M. 88240

(575) 393-3117 www.jwsc.biz

TBPLS# 10021000

District I
 1625 N. French Dr., Hobbs, NM 88240
 Phone (575) 393-9151 Fax (575) 393-0720
District II
 311 S. First St., Artesia, NM 88210
 Phone (575) 748-1293 Fax (575) 748-6720
District III
 1000 Rio Brazos Rd., Aztec, NM 87413
 Phone (505) 334-6178 Fax (505) 334-6170
District IV
 1220 S. St Francis Dr., Santa Fe, NM 87505
 Phone (505) 476-3470 Fax (505) 476-3462

Form APD Conditions

State of New Mexico
Energy, Minerals and Natural Resources
Oil Conservation Division
1220 S. St Francis Dr.
Santa Fe, NM 87505

PERMIT CONDITIONS OF APPROVAL

Operator Name and Address:	AP# Number:
	30-015- 43683
	Well: Burnham Grayburg San Andres #5

OCD Reviewer	Condition
kjones	Will require a directional survey with the C-104
kjones	Once the well is spud, to prevent ground water contamination through whole or partial conduits from the surface, the operator shall drill without interruption through the fresh water zone or zones and shall immediately set in cement the water protection string
kjones	If cement does not circulate to surface, must run temperature survey or other log to determine top of cement.

Well cannot be spud until in
 compliance with NMOCD Rule
 19.15.15.12.B. Refere to email
 dated 3-29-2016

KS

Sharp, Karen, EMNRD

From: Sharp, Karen, EMNRD
Sent: Tuesday, March 29, 2016 11:01 AM
To: 'pwiv@zianet.com'
Cc: Kautz, Paul, EMNRD; Jones, Kellie, EMNRD; Dade, Randy, EMNRD
Subject: Larry Marker APD

Mr. White ~

We have received an APD for the Burnham Grayburg San Andres #5 well for Larry Marker DBA Marker Oil. The 40-acre spacing unit for the proposed well currently has 2 other active wells assigned to it: Burnham Grayburg San Andres #2A and Burnham Grayburg San Andres #4A, both operated by Memorial Production Operating, LLC. Per NMOCD Rule 19.15.15.12.B :

(1) An operator who intends to operate a well in a spacing or proration unit containing an existing well or wells operated by another operator shall, prior to filing the application for permit to drill, deepen or plug back for the well, furnish written notification of its intent to the operator of each existing well, and, if the unit includes state, federal or tribal minerals, to the state land office or BLM, as applicable; provided that separate notification to the BLM is not required if the operator will file the application with the BLM pursuant to 19.15.7.11 NMAC.

(2) The operator shall send the notices by certified mail, return receipt requested, and shall specify the proposed well's location and depth.

(3) The applicant shall submit with its application for permit to drill, deepen or plug back either

(a) a statement attesting that, at least 20 days before the date that the application was submitted to the division, the applicant sent notices to the designated parties, by certified mail, return receipt requested, advising them that if they have an objection they must deliver a written statement of objection to the proposing operator within 20 days of the date the operator mailed the notice, and that it has received no such objection; or

(b) written waivers from all persons required to be notified (the BLM's approval of the application being deemed equivalent to waiver by that agency); in event of objection, the division may approve the application only after hearing.

Could you please furnish me with appropriate documentation so that we may proceed with having this APD approved and signed by our District Supervisor? This well is not authorized to be spud until approval is generated.

Thank you ~

Karen Sharp

Business Operations Specialist-Advanced

NMOCD / ARTESIA / DISTRICT II

Office: (575) 748-1283 x 109

Fax: (575) 748-9720

Website: <http://www.emnrd.state.nm.us/ocd/>

"The mind replays what the heart can't delete"