

**NM OIL CONSERVATION  
ARTESIA DISTRICT**

OCD Artesia

ATS-14-1046

UNITED STATES **APR 06 2016**  
DEPARTMENT OF THE INTERIOR  
BUREAU OF LAND MANAGEMENT

**APPLICATION FOR PERMIT TO DRILL OR REENTER**

FORM APPROVED  
OMB No. 1004-0137  
Expires October 31, 2014

5. Lease Serial No.  
NM-92748

6. If Indian, Allottee or Tribe Name

7. If Unit or CA Agreement, Name and No.

8. Lease Name and Well No.  
Serrano Federal Com 4H

9. API Well No.

30 015 43 701

10. Field and Pool, or Exploratory  
N. Seven Rivers; Glorieta-Yeso 97565

11. Sec., T. R. M. or Blk. and Survey or Area  
Section 11, T19S-R25E

12. County or Parish  
Eddy County

13. State  
NM

1a. Type of work: ☒ DRILL ☐ REENTER

1b. Type of Well: ☒ Oil Well ☐ Gas Well ☐ Other ☒ Single Zone ☐ Multiple Zone

2. Name of Operator Yates Petroleum Corporation

3a. Address 105 S. Fourth St.  
Artesia, NM 88210

3b. Phone No. (include area code)  
575-748-4120

4. Location of Well (Report location clearly and in accordance with any State requirements.)\*

At surface 480' FSL & 15' FWL

At proposed prod. zone 400' FSL & 230' FEL (BHL)

14. Distance in miles and direction from nearest town or post office\*  
12 miles south of Artesia

15. Distance from proposed\* 15'  
location to nearest  
property or lease line, ft.  
(Also to nearest drig. unit line, if any)

16. No. of acres in lease  
200 acres

17. Spacing Unit dedicated to this well  
S2S2  
160 acres

18. Distance from proposed location\* 545'  
to nearest well, drilling, completed,  
applied for, on this lease, ft.

19. Proposed Depth  
2680' TVD  
7452' TD

20. BLM/BIA Bond No. on file  
NMB 000434  
NMB 000920

21. Elevations (Show whether DF, KDB, RT, GL, etc.)  
3449'

22. Approximate date work will start\*

23. Estimated duration  
14 days

**24. Attachments**

The following, completed in accordance with the requirements of Onshore Oil and Gas Order No. 1, must be attached to this form:

1. Well plat certified by a registered surveyor.

2. A Drilling Plan.

3. A Surface Use Plan (if the location is on National Forest System Lands, the  
SUPO must be filed with the appropriate Forest Service Office).

4. Bond to cover the operations unless covered by an existing bond on file (see  
Item 20 above).

5. Operator certification

6. Such other site specific information and/or plans as may be required by the  
BLM.

25. Signature

*Travis Hahn*

Name (Printed/Typed)  
Travis Hahn

Date  
08/26/2014

Title

Land Regulatory Agent

Approved by (Signature)

**Steve Caffey**

Name (Printed/Typed)

Date **MAR 31 2016**

Title

**FIELD MANAGER**

Office

**CARLSBAD FIELD OFFICE**

Application approval does not warrant or certify that the applicant holds legal or equitable title to those rights in the subject lease which would entitle the applicant to  
conduct operations thereon.

Conditions of approval, if any, are attached.

**APPROVAL FOR TWO YEARS**

Title 18 U.S.C. Section 1001 and Title 43 U.S.C. Section 1212, make it a crime for any person knowingly and willfully to make to any department or agency of the United  
States any false, fictitious or fraudulent statements or representations as to any matter within its jurisdiction.

(Continued on page 2)

\*(Instructions on page 2)

**Roswell Controlled Water Basin**

**SEE ATTACHED FOR  
CONDITIONS OF APPROVAL**

**Approval Subject to General Requirements  
& Special Stipulations Attached**

105

CERTIFICATION  
YATES PETROLEUM CORPORATION  
Serrano Federal Com #4H

I hereby certify that I, or someone under my direct supervision, have inspected the drill site and access route proposed herein; that I am familiar with the conditions which currently exist; and an someone under employment of Yates Petroleum Corporation has full knowledge of state and federal laws applicable to the operation; that the statements made in this APD package are, to the best of my knowledge, true and correct; and that the work associated with the operations proposed herein will be performed in conformity with this APD package and the terms and conditions under which it is approved. I also certify that I, or the company I represent, am responsible for the operations conducted under this application. These statements are subject to the provisions of 18 U.S.C. 1001 for the filing of false statements.

Executed this 26 day of August 2014

Signature 

Name Travis Hahn

Position Title Land Regulatory Agent

Address 105 South Fourth Street, Artesia, New Mexico 88210

Telephone (575) 748-4120

Field Representative (if not above signatory) Tim Bussell, Drilling Supervisor

Address (if different from above) Same as above

Telephone (if different from above) (575) 748-4221

DISTRICT I  
1825 N. French Dr., Hobbs, NM 88240  
Phone (575) 393-6161 Fax: (575) 393-0720

DISTRICT II  
811 S. First St., Artesia, NM 88210  
Phone (575) 748-1283 Fax: (575) 748-9720

DISTRICT III  
1000 Rio Brazos Rd., Aztec, NM 87410  
Phone (505) 934-6178 Fax: (505) 934-6170

DISTRICT IV  
1220 S. St. Francis Dr., Santa Fe, NM 87505  
Phone (505) 476-3459 Fax: (505) 476-3452

State of New Mexico  
Energy, Minerals and Natural Resources Department

Form C-102  
Revised August 1, 2011

Submit one copy to appropriate  
District Office

OIL CONSERVATION DIVISION

1220 South St. Francis Dr.  
Santa Fe, New Mexico 87505

WELL LOCATION AND ACREAGE DEDICATION PLAT

☐ AMENDED REPORT

API Number <b>30 01543701</b>	Pool Code <b>97565</b>	Pool Name <b>N. Seven Rivers; G. Brietta - 4/050</b>
Property Code <b>316098</b>	Property Name <b>SERRANO FEDERAL COM</b>	Well Number <b>4H</b>
OGRID No. <b>025575</b>	Operator Name <b>YATES PETROLEUM CORPORATION</b>	Elevation <b>3449</b>

Surface Location

UL or lot No.	Section	Township	Range	Lot Idn	Feet from the	SOUTH/South line	Feet from the	East/EAST line	County
<b>M</b>	<b>11</b>	<b>19 S</b>	<b>25 E</b>		<b>480'</b>	<b>SOUTH</b>	<b>15'</b>	<b>WEST</b>	<b>EDDY</b>

Bottom Hole Location If Different From Surface

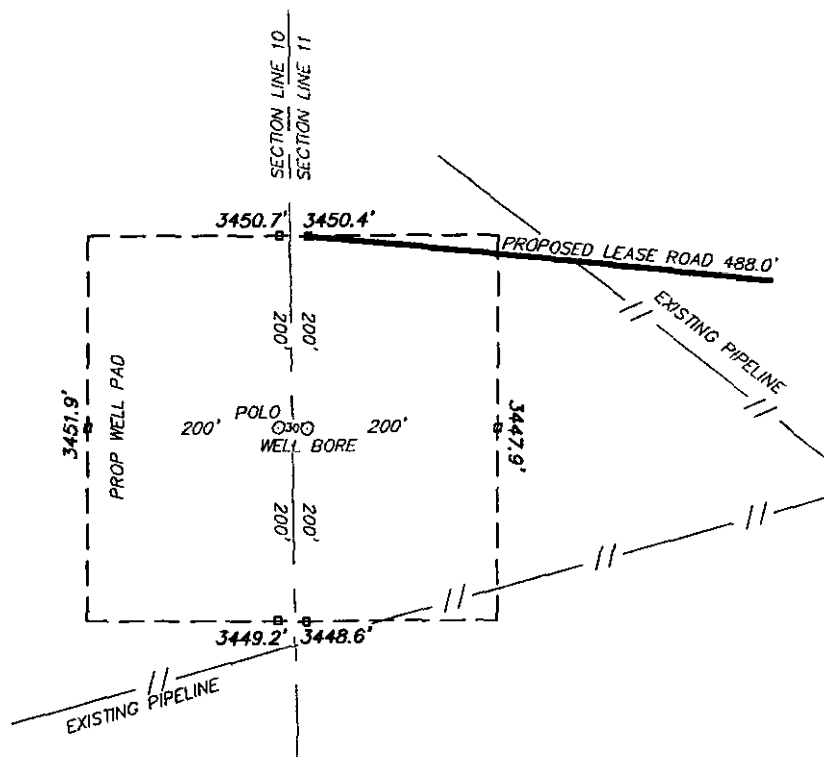
UL or lot No.	Section	Township	Range	Lot Idn	Feet from the	SOUTH/South line	Feet from the	East/EAST line	County
<b>P</b>	<b>11</b>	<b>19 S</b>	<b>25 E</b>		<b>400'</b>	<b>SOUTH</b>	<b>230'</b>	<b>EAST</b>	<b>EDDY</b>

Dedicated Acres	Joint or Infill	Consolidation Code	Order No.

NO ALLOWABLE WILL BE ASSIGNED TO THIS COMPLETION UNTIL ALL INTERESTS HAVE BEEN CONSOLIDATED  
OR A NON-STANDARD UNIT HAS BEEN APPROVED BY THE DIVISION

<p>N: 612137.6 E: 501037.2 (NAD83)</p>	<p>N: 612073.1 E: 503688.0 (NAD83)</p>	<p>N: 612008.5 E: 506338.8 (NAD83)</p>	<p><b>OPERATOR CERTIFICATION</b> I hereby certify that the information contained herein is true and complete to the best of my knowledge and belief, and that this organization either owns a working interest or unleased mineral interest in the land including the proposed bottom hole location or has a right to drill this well at this location pursuant to a contract with an owner of such a mineral or working interest, or to a voluntary pooling agreement or a compulsory pooling order heretofore entered by the division.  <u>T. Hahn</u> 8/26/14 Signature Date  <u>Travis Hahn</u> Printed Name  <u>thahn@yatespetroleum.com</u> Email Address</p>
<p><b>SURFACE LOCATION</b> Lat - N 32°40'09.65" Long - W 104°27'50.50" NMSPCE- N 607264.7 E 501120.0 (NAD-83)</p>	<p><b>PROPOSED BOTTOM HOLE LOCATION</b> Lat - N 32°40'08.03" Long - W 104°26'15.99" NMSPCE- N 607095.4 E 506121.3 (NAD-83)</p>	<p><b>SURVEYOR CERTIFICATION</b> I hereby certify that the well location shown on this plat was plotted from field notes of actual surveys made by me or under my supervision, and that the same is true and correct to the best of my belief.  OCTOBER 18 2013 Date Surveyed  Signature &amp; Seal of Professional Surveyor  Certificate No. 7977 BASIN SURVEY</p>	<p>Scale: 1" = 1000' WD Num.: 29570</p>

SECTION 11, TOWNSHIP 19 SOUTH, RANGE 25 EAST. N.M.P.M.,  
EDDY COUNTY, NEW MEXICO.



YATES PETROLEUM CORPORATION  
SERRANO FEDERAL COM #4H

ELEV. - 3449'

Lat - N 32°40'09.65"

Long - W 104°27'50.86"

NMSPCE- N 607265.0

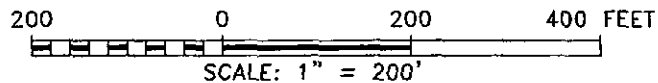
E 501090.0

(NAD-83)

ARTESIA, NM IS ±16 MILES TO THE SOUTHEAST OF LOCATION.

Directions to Location:

FROM JUNCTION US 285 AND CR 21, GO WEST 4.0  
MILES, TURN LEFT AND GO NORTH 1.1 MILES, GO  
LEFT 0.1 MILES WEST TO PROPOSED LOCATION.



YATES PETROLEUM  
CORPORATION

REF: SERRANO FEDERAL COM #4H / WELL PAD TOPO

THE SERRANO FEDERAL COM #4H LOCATED 480' FROM  
THE SOUTH LINE AND 15' FROM THE WEST LINE OF  
SECTION 11, TOWNSHIP 19 SOUTH, RANGE 25 EAST.

N.M.P.M., EDDY COUNTY, NEW MEXICO.

**basin**  
**surveys**

focused on excellence  
in the oilfield

P.O. Box 1786

1120 N. West County Rd.

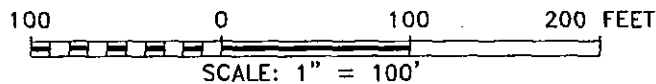
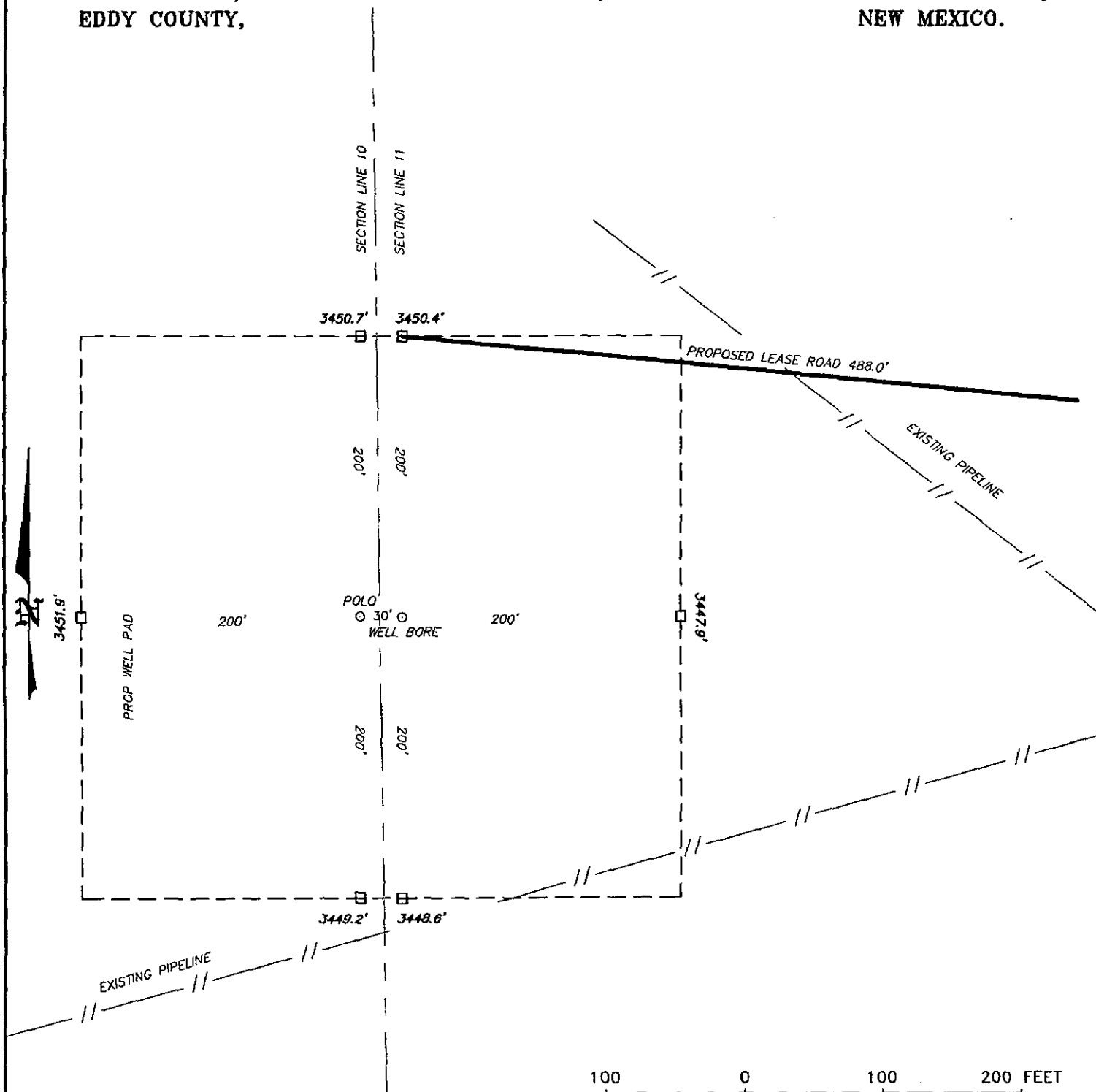
Hobbs, New Mexico 88241

(575) 393-7316 - Office

(575) 392-2206 - Fax

basinsurveys.com

SECTION 11, TOWNSHIP 19 SOUTH, RANGE 25 EAST. N.M.P.M.,  
EDDY COUNTY, NEW MEXICO.



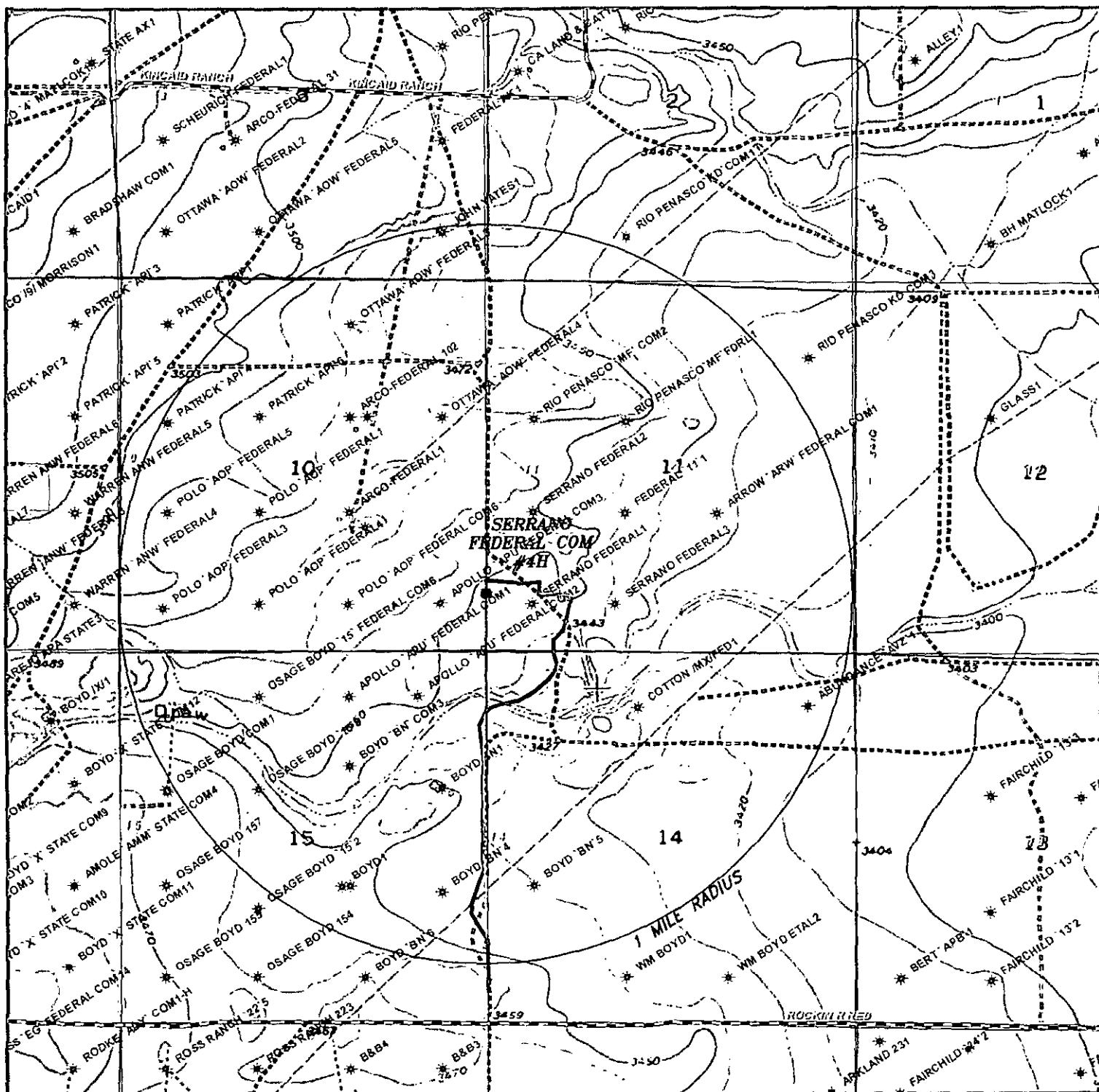
YATES PETROLEUM CORPORATION

REF: SERRANO FEDERAL COM #4H / WELL PAD TOPO

THE SERRANO FEDERAL COM #4H LOCATED 480' FROM  
THE SOUTH LINE AND 15' FROM THE WEST LINE OF  
SECTION 11, TOWNSHIP 19 SOUTH, RANGE 25 EAST.  
N.M.P.M., EDDY COUNTY, NEW MEXICO.

**basin surveys**  
focused on excellence  
in the oilfield

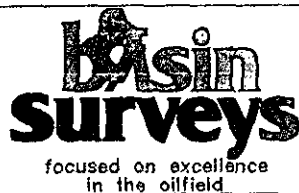
P.O. Box 1786 (575) 393-7316 - Office  
1120 N. West County Rd. (575) 392-2206 - Fax  
Hobbs, New Mexico 88241 [basinsurveys.com](http://basinsurveys.com)



## SERRANO FEDERAL COM #4H

Located 480' FSL and 15' FWL

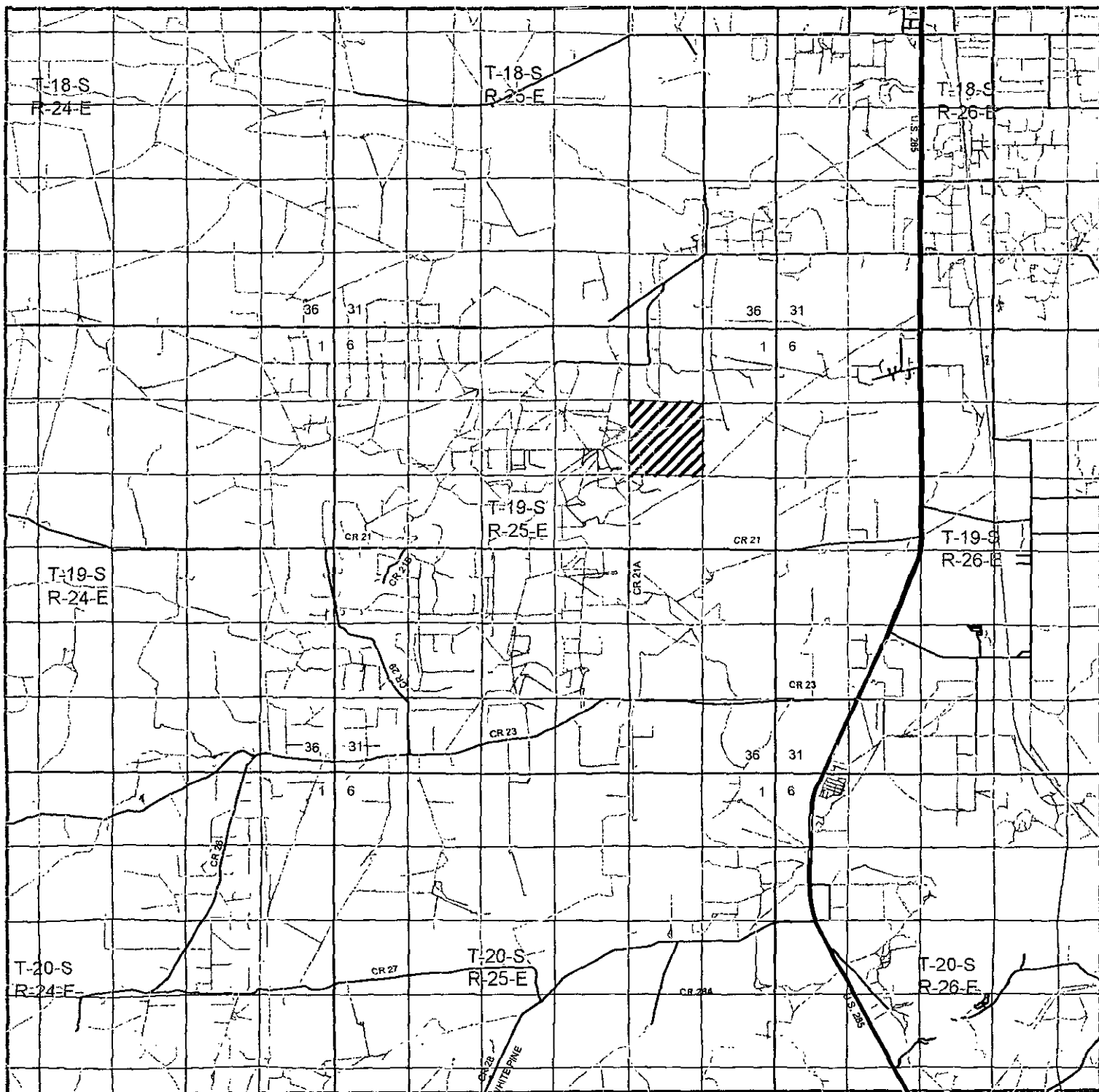
Section 11, Township 19 South, Range 25 East,  
N.M.P.M., Eddy County, New Mexico.



P.O. Box 1786  
1120 N. West County Rd.  
Hobbs, New Mexico 88241  
(575) 393-7316 - Office  
(575) 392-2206 - Fax  
basinsurveys.com

0'	1000'	2000'	3000'	4000'
SCALE: 1" = 2000'				
W.O. Number: KAN 29570				
Survey Date: 10-16-2013				
YELLOW TINT - USA LAND				
BLUE TINT - STATE LAND				
NATURAL COLOR - FEE LAND				





# **SERRANO FEDERAL COM #4H**

Located 480' FSL and 15' FWL

Section 11, Township 19 South, Range 25 East,  
N.M.P.M., Eddy County, New Mexico.

**basin**  
**surveys**

focused on excellence  
in the oilfield

P.O. Box 1786  
1120 N. West County Rd.  
Hobbs, New Mexico 88241  
(575) 393-7316 - Office  
(575) 392-2206 - Fax  
basinsurveys.com

0 1 MI 2 MI 3 MI 4 MI

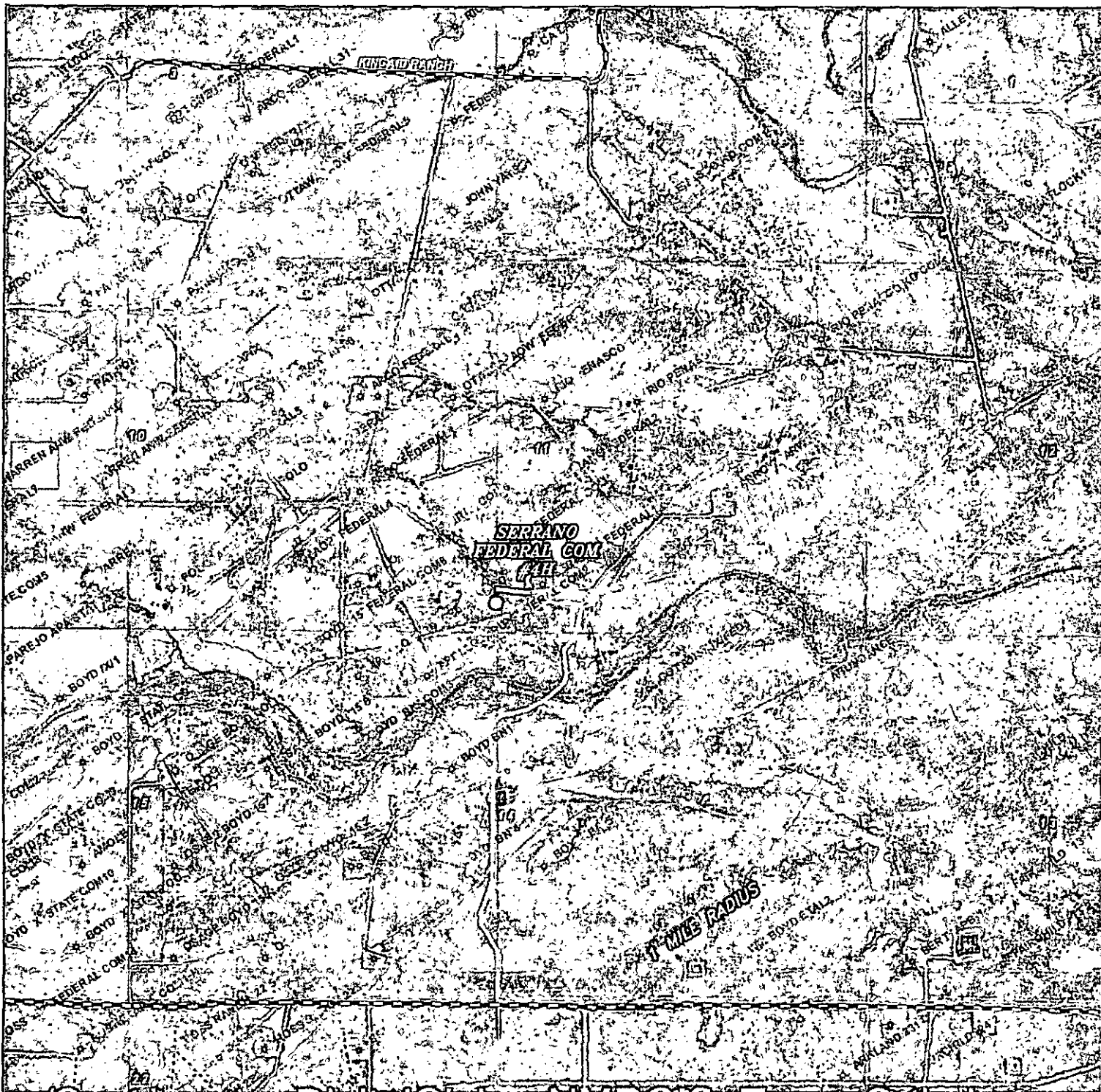
SCALE: 1" = 2 MILES

W.O. Number: KAN 29570

Survey Date: 10-16-2013

YELLOW TINT - USA LAND  
BLUE TINT - STATE LAND  
NATURAL COLOR - FEE LAND





## SERRANO FEDERAL COM #4H

Located 480' FSL and 15' FWL

Section 11, Township 19 South, Range 25 East,  
N.M.P.M., Eddy County, New Mexico.

**basin**  
**surveys**

focused on excellence  
in the oilfield

P.O. Box 1786  
1120 N. West County Rd.  
Hobbs, New Mexico 88241  
(575) 393-7316 - Office  
(575) 392-2206 - Fax  
basinsurveys.com

0' 1000' 2000' 3000' 4000'

SCALE: 1" = 2000'

W.O. Number: KAN 29570

Survey Date: 10-16-2013

YELLOW TINT - USA LAND  
BLUE TINT - STATE LAND  
NATURAL COLOR - FEE LAND





**YATES PETROLEUM CORPORATION**

Serrano Federal Com #4H  
480' FSL & 15' FWL, Surface Hole  
400' FSL & 230' FEL, Bottom Hole  
Section 11 T19S-R25E  
Eddy County, New Mexico

**1. THE ESTIMATED TOPS OF GEOLOGIC MARKERS ARE AS FOLLOW:**

**\*\*In the 700' from surface to the top of the San Andres there would be Queen and/or Grayburg formation present.**

Alluvial Deposits		Yeso	2578'--Oil	
San Andres	820'--Oil	Target Yeso	2922'--Oil	
Glorieta	2440'--Oil	TD	2680'--TVD	7452'--MD

**2. THE ESTIMATED DEPTHS AT WHICH ANTICIPATED WATER, OIL OR GAS FORMATIONS ARE EXPECTED TO**

Water: Approximately: 0' - 900'

Oil or Gas: See above--All Potential Zones

**3. PRESURECONTROL EQUIPMENT:**

3000 PSI BOPE with a 13.625" opening will be installed on the 9 5/8". Test will be conducted by an independent tester, utilizing a test plug in the well head. BOP/BOPE test shall include a low pressure test from 250 to 300 psi. The test will be held for a minimum of 10 minutes on each segment of the system tested if test is done with a test plug and 30 minutes without a test plug. Blind rams and pipe rams will be tested to the rated pressure of the BOP. Any leaks will be repaired at the time of the test. Annular preventers will be tested to 50% of rated pressure. Accumulator system will be inspected for correct pre charge pressures, and proper functionality, prior to connection to the BOP system. Tests will be conducted before drilling out from under all casing strings, which are set and cemented in place. Blowout Preventer controls will be installed prior to drilling the surface plug and will remain in use until the well is completed or abandoned. Preventers will be inspected and operated at least daily to ensure good mechanical working order, and this inspection recorded on the daily drilling report. See Exhibit.

**A Auxiliary Equipment:**

Kelly cock, pit level indicators, flow sensor equipment and a sub with full opening valve to fit the drill pipe and collars will be available on the rig floor in the open position at all times for use when Kelly is not in use.

**4. THE PROPOSED CASING AND CEMENTING PROGRAM:****A. Casing Program: (All New)**

CASING STRING	HOLE SIZE	CASING SIZE	WT./FT.	GRADE	COUPLING	INTERVAL	LENGTH
Conductor	30"	20"	94#	H-40	ST&C	0'-78'	78'
Surface	14 3/4"	9 5/8"	36#	J-55 or K-55	LT&C	0'-1000'	1000'
Production	7 7/8"	5 1/2"	17#	L-80	Buttress	0'-7452'	7452'

Minimum Casing Design Factors: Burst 1.0, Tensile 1.8, Collapse 1.125

**B. CEMENTING PROGRAM:**

Conductor Casing: Will use ready mix to cement to surface

Surface Casing: Lead with 545 sacks Class 35:65:6PzC (Wt. 12.50, Yld. 2.00, H2O 11.0 gal/sx). Tail in with 205 sacks Class C with 2% CaCl (Wt. 14.80, Yld. 1.34, H2O 6.2 gal/sx). Cement designed with 100% excess. TOC surface.

Production Casing; Lead with 245 sacks 35:65:6PzC (Wt. 12.50, Yld. 2.00, H2O 11.0 gal/sx). Tail in 930 sacks PecosVILt with D112, Fluid Loss 0.4%; D151, Calcium Carbonate 22.5 lb/sack; D174, Extender 1.5

lb/sack; D177, Retarder 0.01 lb/sack; D800, Retarder 0.6 lb/sack; D46, Antifoam Agent (Wt. 13.50, Yld. 1.35, H<sub>2</sub>O 6.30 gal/sx). Cement designed with 35% excess. TOC surface.

Well will be drilled vertically to 2175'. Well will then be kicked off and directionally drilled at 12° degrees per 100' with an 7.875" hole to 7452' MD (2680' TVD). Hole will then be reduced to 8.5" and drilled to 7417' MD (2700' TVD) where 5.5" will be set and cemented to surface. Penetration point of producing zone will be encountered at 464' FSL & 489' FWL, Section 11-T19S-R25E. Deepest TVD is 2680' in the lateral.

#### 5. MUD PROGRAM AND EQUIPMENT::

INTERVAL	TYPE	WEIGHT	VISCOSITY	FLUID LOSS
0-1000'	Fresh Water	8.60-8.70	32-34	N/C
1000'-7452'	Fresh Water	8.50-8.70	28-32	N/C

Sufficient mud material(s) to maintain mud properties, control lost circulation and contain a blowout will be available at the well site during drilling operations. Mud will be checked hourly by rig personnel. Mud level monitoring: After surface casing is set, an electronic PVT system will be installed as our primary mud level monitoring system. A secondary system will also be implemented as to insure the PVT system is functioning properly. The secondary system will be comprised of the derrick hand checking the fluid level in the pits periodically using a nut on the end of a rope hanging just above the fluid level in the pit.

#### 6. EVALUATION PROGRAM:

Samples: 10' samples from 1000' to TD.

Logging: Horizontal-MWD-GR-turned on 500' before KOP to TD. Coring: As warranted.

DST's: None.

Mudlogging: from the surface to TD

#### 7. ABNORMAL CONDITIONS, Bottom hole pressure and potential hazards:

Anticipated BHP:

DEPTH	ANTICIPATED BHP
0' TO 1000'	452 PSI
1000' TO 2680' TVD	1212 PSI

No abnormal pressures or temperatures are anticipated.

Lost Circulation Zones Anticipated: None.

H<sub>2</sub>S is anticipated.

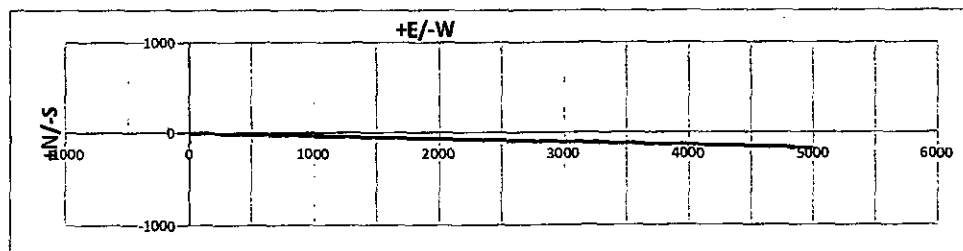
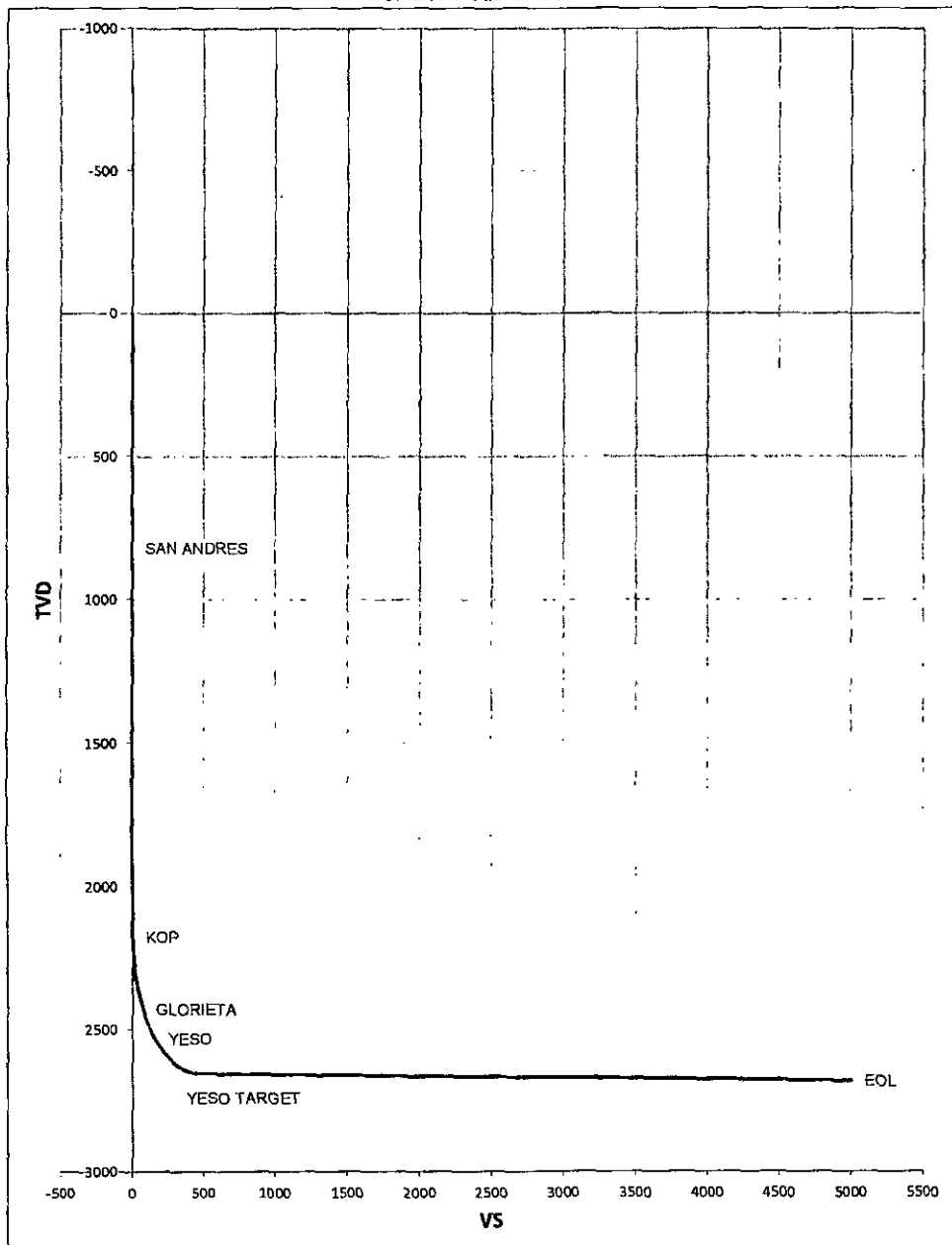
#### 8. ANTICIPATED STARTING DATE:

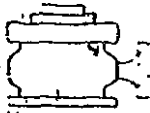
Plans are to drill this well as soon as possible after receiving approval. It should take approximately 14 days to drill the well with completion taking another 4 days.

Well Name:	Serrano Federal Com #4H	Tgt N/S:	-169.30	EOC TVD/MD:	2652.85 / 2922.53
Surface Location:	Section 11 , Township 19S Range 25E	Tgt E/W:	5001.30	VS:	5004.16
Bottom Hole Location:	Section 11 , Township 19S Range 25E	VS Az:	91.94	EOL TVD/MD:	2680.00 / 7452.09

MD	Inc.	Azi.	TVD	+N/S	+E/W	VS	DLS	Comments
0	0	0	0	0	0	0	0	
820.00	0.00	0.00	820.00	0.00	0.00	0.00	0.00	SAN ANDRES
2175.39	0.00	0.00	2175.39	0.00	0.00	0.00	0.00	KOP
2200.00	2.95	91.94	2199.99	-0.02	0.63	0.63	12.00	
2225.00	5.95	91.94	2224.91	-0.09	2.57	2.58	12.00	
2250.00	8.95	91.94	2249.70	-0.20	5.81	5.82	12.00	
2275.00	11.95	91.94	2274.28	-0.35	10.35	10.35	12.00	
2300.00	14.95	91.94	2298.59	-0.55	16.16	16.17	12.00	
2325.00	17.95	91.94	2322.56	-0.79	23.24	23.25	12.00	
2350.00	20.95	91.94	2346.13	-1.07	31.56	31.57	12.00	
2375.00	23.95	91.94	2369.24	-1.39	41.10	41.12	12.00	
2400.00	26.95	91.94	2391.81	-1.75	51.83	51.86	12.00	
2425.00	29.95	91.94	2413.78	-2.16	63.74	63.77	12.00	
2440.40	31.80	91.94	2427.00	-2.42	71.63	71.67	12.00	GLORIETA
2450.00	32.95	91.94	2435.11	-2.60	76.77	76.82	12.00	
2475.00	35.95	91.94	2455.72	-3.08	90.91	90.96	12.00	
2500.00	38.95	91.94	2475.56	-3.59	106.10	106.16	12.00	
2525.00	41.95	91.94	2494.59	-4.14	122.31	122.38	12.00	
2550.00	44.95	91.94	2512.73	-4.72	139.49	139.57	12.00	
2575.00	47.95	91.94	2529.95	-5.33	157.60	157.69	12.00	
2578.06	48.32	91.94	2532.00	-5.41	159.86	159.95	12.00	YESO
2600.00	50.95	91.94	2546.20	-5.98	176.58	176.68	12.00	
2625.00	53.95	91.94	2561.44	-6.65	196.39	196.50	12.00	
2650.00	56.95	91.94	2575.61	-7.34	216.97	217.09	12.00	
2675.00	59.95	91.94	2588.69	-8.07	238.26	238.40	12.00	
2700.00	62.95	91.94	2600.64	-8.81	260.20	260.35	12.00	
2725.00	65.95	91.94	2611.42	-9.57	282.75	282.91	12.00	
2750.00	68.95	91.94	2621.00	-10.35	305.82	305.99	12.00	
2775.00	71.95	91.94	2629.36	-11.15	329.36	329.55	12.00	
2800.00	74.95	91.94	2636.48	-11.96	353.31	353.51	12.00	
2825.00	77.95	91.94	2642.34	-12.78	377.60	377.81	12.00	
2850.00	80.95	91.94	2646.91	-13.61	402.16	402.39	12.00	
2875.00	83.95	91.94	2650.20	-14.45	426.92	427.17	12.00	
2900.00	86.95	91.94	2652.18	-15.29	451.83	452.09	12.00	
2922.53	89.66	91.94	2652.85	-16.06	474.33	474.60	12.00	YESO TARGET
7452.09	89.66	91.94	2680.00	-169.30	5001.30	5004.16	0.00	EOL

# Serrano Federal Com #4H

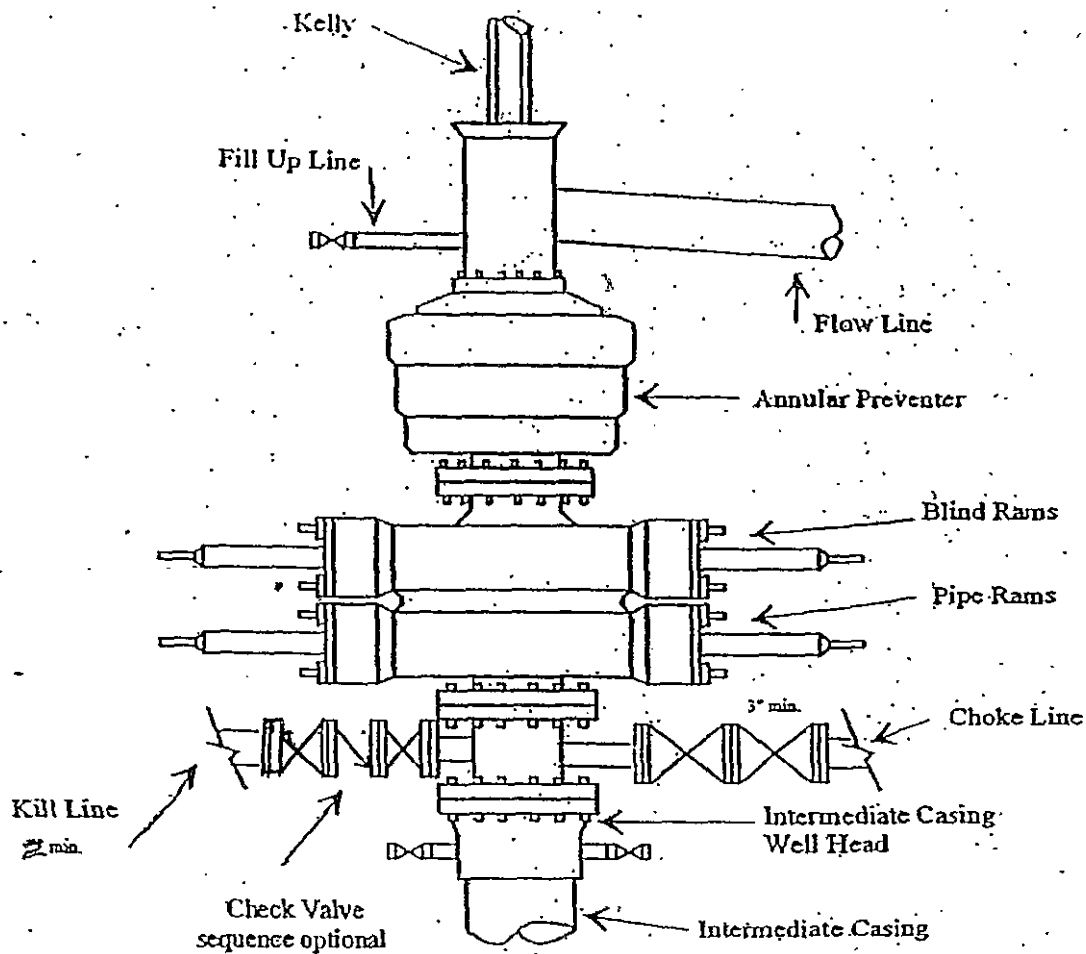




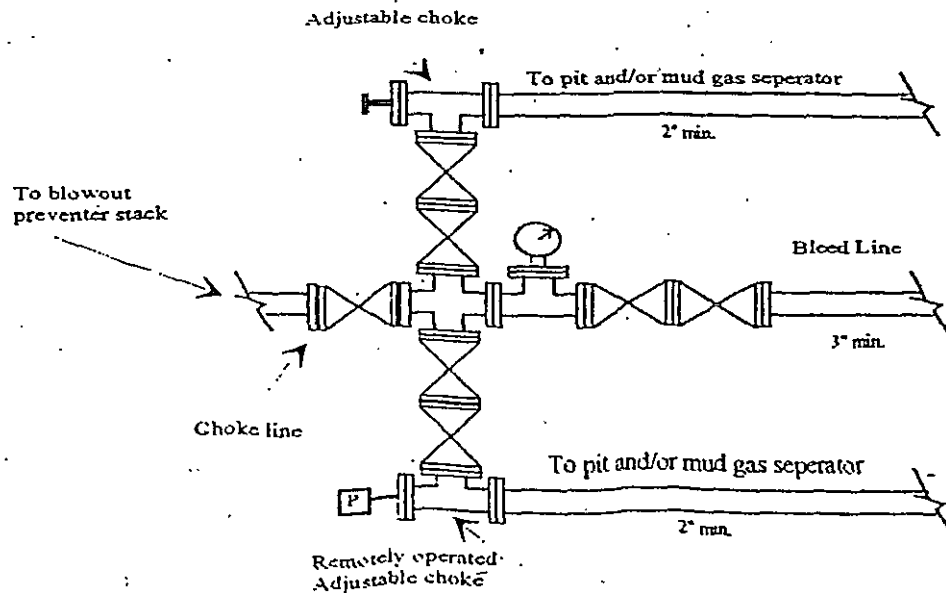
# Yates Petroleum Corporation

BOP-3

## Typical 3,000 psi Pressure System Schematic Annular with Double Ram Preventer Stack

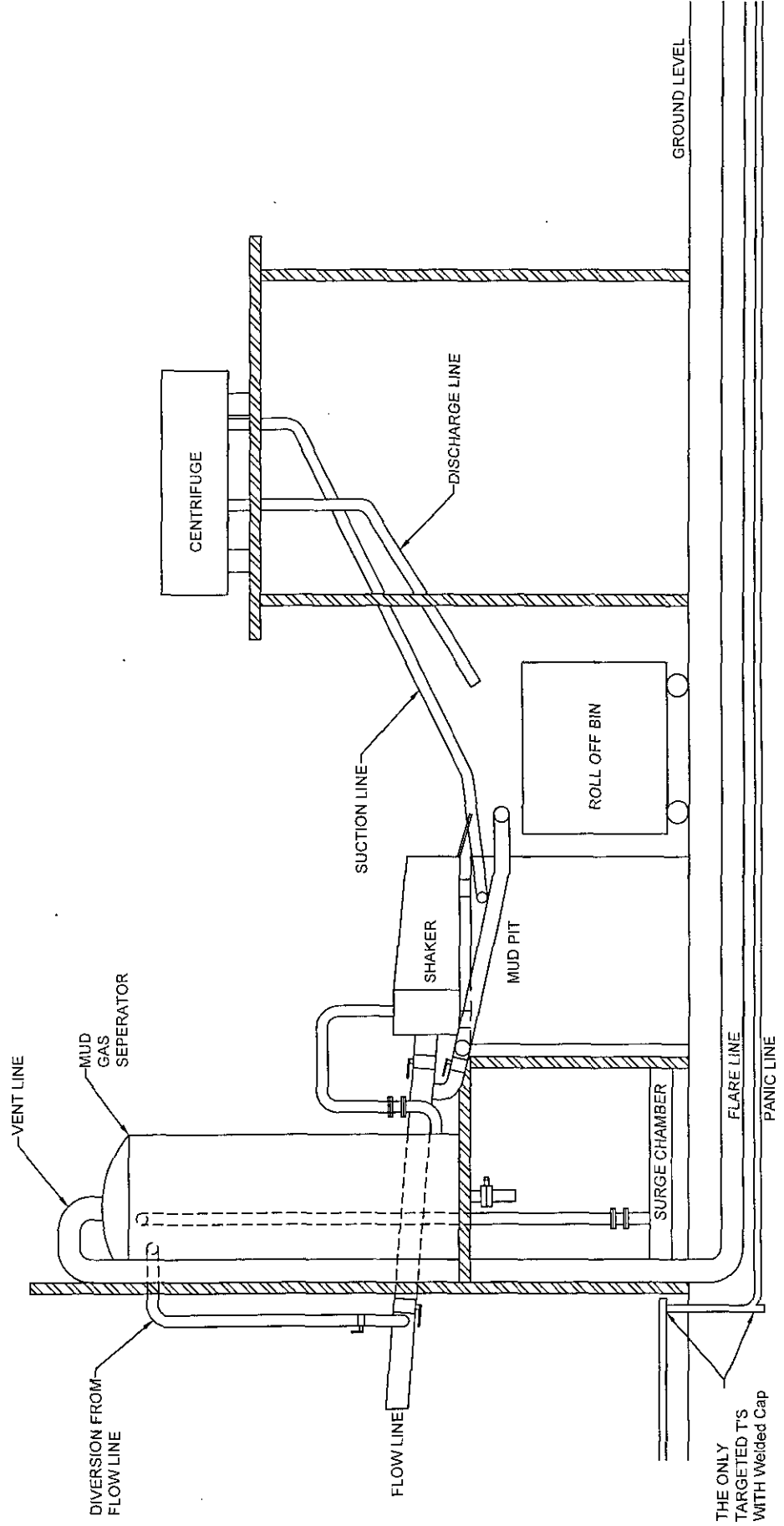


## Typical 3,000 psi choke manifold assembly with at least these minimum features



# YATES PETROLEUM CORPORATION

Piping from Choke Manifold  
to the Closed Loop Drilling Mud System



The flare discharge must be 100' from wellhead for non H2S wells and 150' from wellhead for wells expected to encounter H2S.

# Yates Petroleum Corporation

## Closed Loop System

### Equipment Design Plan

Closed Loop System will consist of:

1 – double panel shale shaker

1 – (minimum) Centrifuge, certain wells and flow rates may require 2 centrifuges

On certain wells, the Centrifuge will be replaced by a Clackco Settling Tank System

1 – minimum centrifugal pump to transfer fluids

2- 500 bbl. FW Tanks

1 – 500 bbl. BW Tank

1 – half round frac tank – 250 bbl. capacity as necessary to catch cement / excess mud returns generated during a cement job.

1 Set of rail cars / catch bins

Certain wells will use an ASC Auger Tank

### Operation Plan

All equipment will be inspected at least hourly by rig personnel and daily by contractors' personnel.

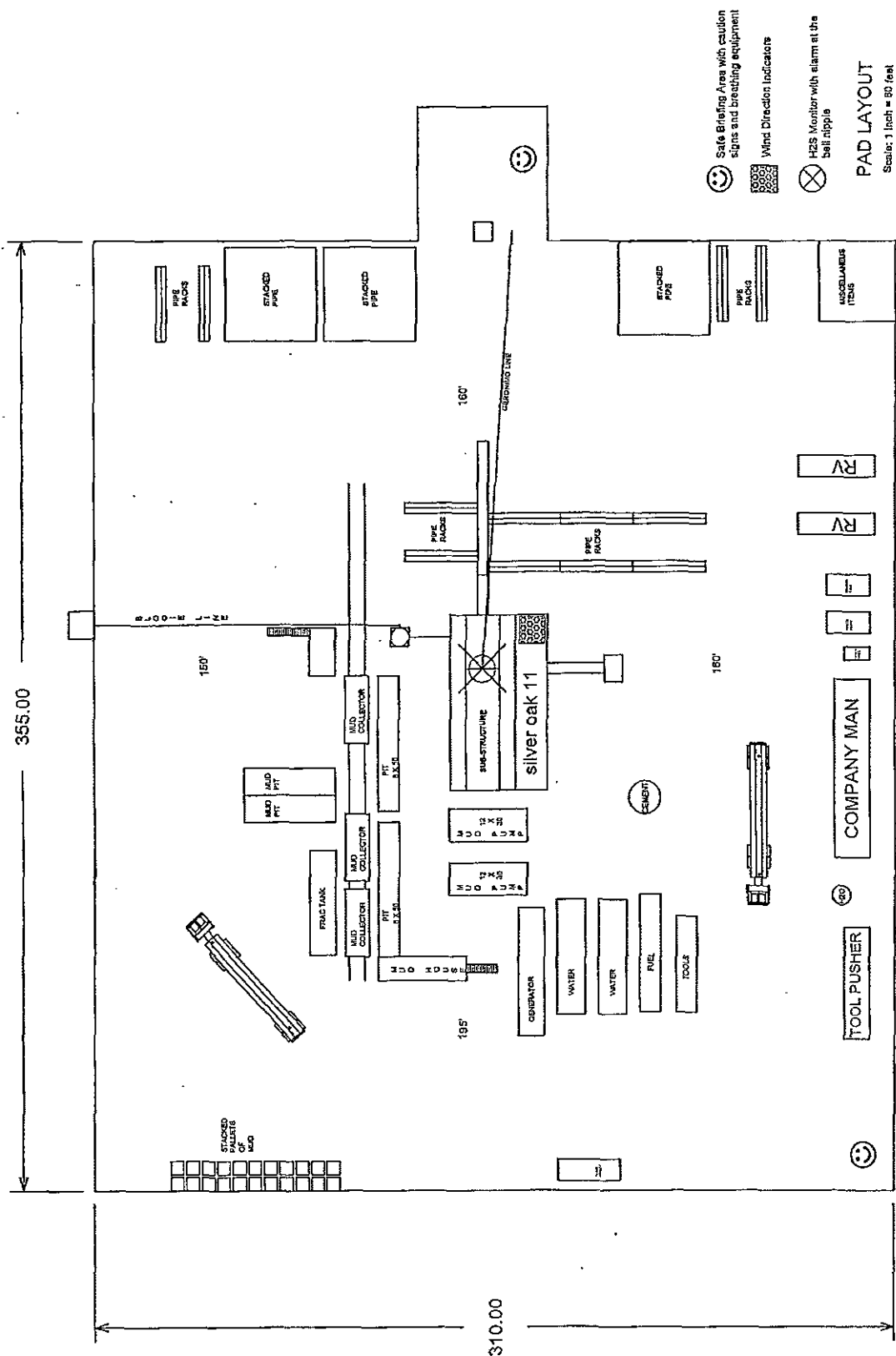
Any spills / leaks will be reported to YPC, NMOCD, and cleaned up without delay.

### Closure Plan

Drilling with Closed Loop System, haul off bins will be taken to Gandy Marley, Lea Land Farm, CRI or Sundance Services Inc.

# YATES PETROLEUM CORPORATION

## SILVER OAK RIG #11



PAD LAYOUT

Scale: 1 inch = 50 feet



# **Yates Petroleum Corporation**

**105 S. Fourth Street  
Artesia, NM 88210**

## **Hydrogen Sulfide (H<sub>2</sub>S) Contingency Plan**

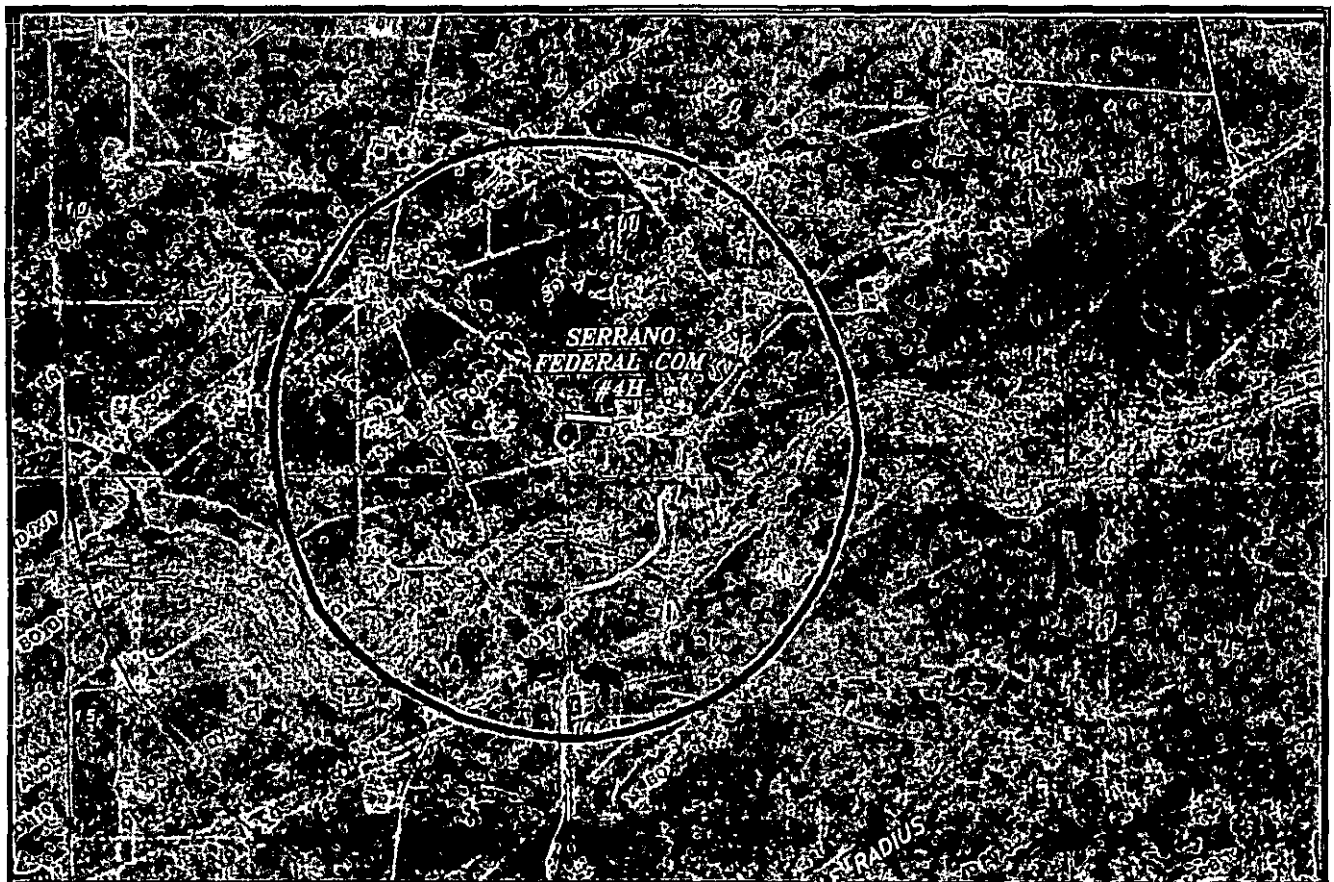
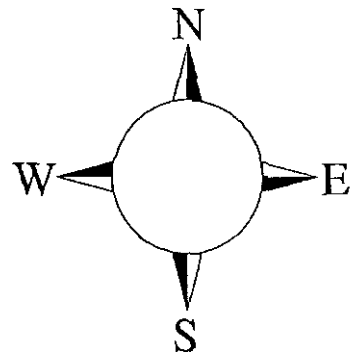
**For**

### **Serrano Federal Com #4H**

**480' FSL and 15' FWL  
Section 11, T-19-S, R-25-E  
Eddy County, NM**

## Serrano Federal Com #4H

This is an open drilling site. H<sub>2</sub>S monitoring equipment and emergency response equipment will be used within 500' of zones known to contain H<sub>2</sub>S, including warning signs, wind indicators and H<sub>2</sub>S monitor.



Assumed 100 ppm ROE = 3000'

100 ppm H<sub>2</sub>S concentration shall trigger activation of this plan.

## Emergency Procedures

In the case of a release of gas containing H<sub>2</sub>S, the first responder(s) must isolate the area and prevent entry by other persons into the 100 ppm ROE. Additionally the first responder(s) must evacuate any public places encompassed by the 100 ppm ROE. First responder(s) must take care not to injure themselves during this operation. Company and/or local officials must be contacted to aid in this operation. Evacuation of the public should be beyond the 100 ppm ROE.

All responders must have training in the detection of H<sub>2</sub>S, measures for protection against the gas, equipment used for protection and emergency response. Additionally, responders must be equipped with H<sub>2</sub>S monitors and air packs in order to control the release. Use the "buddy system" to ensure no injuries during the response.

## Ignition of Gas Source

Should control of the well be considered lost and ignition considered, take care to protect against exposure to Sulfur Dioxide (SO<sub>2</sub>). Intentional ignition must be coordinated with the NMOCD and local officials. Additionally the NM State Police may become involved. NM State Police shall be the Incident Command on scene of any major release. Take care to protect downwind whenever there is an ignition of the gas

## Characteristics of H<sub>2</sub>S and SO<sub>2</sub>

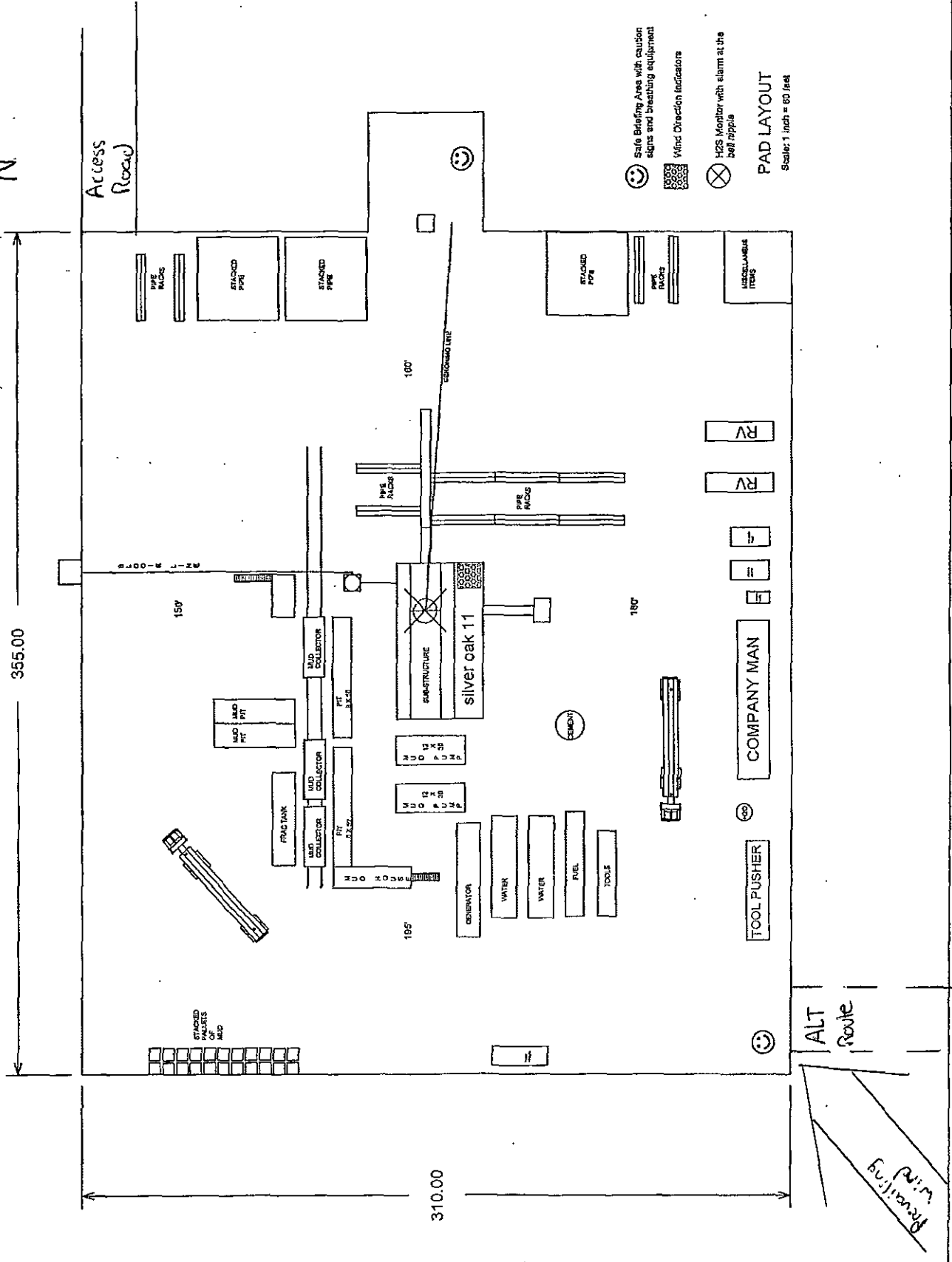
Common Name	Chemical Formula	Specific Gravity	Threshold Limit	Hazardous Limit	Lethal Concentration
Hydrogen Sulfide	H <sub>2</sub> S	1.189 Air = 1	10 ppm	100 ppm/hr	600 ppm
Sulfur Dioxide	SO <sub>2</sub>	2.21 Air = 1	2 ppm	N/A	1000 ppm

## Contacting Authorities

YPC personnel must liaison with local and state agencies to ensure a proper response to a major release. Additionally, the OCD must be notified of the release as soon as possible but no later than 4 hours. Agencies will ask for information such as type and volume of release, wind direction, location of release, etc. Be prepared with all information available. The following call list of essential and potential responders has been prepared for use during a release. YPC Company response must be in coordination with the State of New Mexico's 'Hazardous Materials Emergency Response Plan' (HMER)

# YATES PETROLEUM CORPORATION

## SILVER OAK RIG #11



**PAD LAYOUT**  
 Scale: 1 inch = 60 feet

## ***Yates Petroleum Corporation Phone Numbers***

---

YPC Office .....	(575) 748-1471
Jim Brown/Operations Manager .....	(575) 748-4189
LeeRoy Richards/Prod Superintendent .....	(575) 748-4228
Joe Chaves/Assistant Prod Superintendent .....	(575) 748-4212
Bruce Noles/Drilling .....	(575) 748-4224
Paul Hanes/Prod. Foreman/Roswell .....	(575) 624-2805
Tim Bussell/Drilling Superintendent .....	(575) 748-4221
Artesia Answering Service .....	(575) 748-4302
(During non-office hours)	

### **Agency Call List**

#### **Eddy County (575)**

##### **Artesia**

State Police .....	746-2703
City Police.....	746-2703
Sheriff's Office .....	746-9888
Ambulance.....	911
Fire Department .....	746-2701
LEPC (Local Emergency Planning Committee) .....	746-2122
NMOCD.....	748-1283

##### **Carlsbad**

State Police .....	885-3137
City Police.....	885-2111
Sheriff's Office .....	887-7551
Ambulance.....	911
Fire Department .....	885-2111
LEPC (Local Emergency Planning Committee).....	887-3798
US Bureau of Land Management.....	887-6544
New Mexico Emergency Response Commission (Santa Fe)	(505)476-9600
24 HR .....	(505) 827-9126
New Mexico State Emergency Operations Center.....	(505) 476-9635
National Emergency Response Center (Washington, DC)	...(800) 424-8802

##### **Other**

Boots & Coots IWC .....	1-800-256-9688 or (281) 931-8884
Cudd Pressure Control.....	(915) 699-0139 or (915) 563-3356
Halliburton .....	(575) 746-2757
B. J. Services.....	(575) 746-3569

Flight For Life -4000 24th St, Lubbock, TX .....	(806) 743-9911
Aerocare -Rr 3 Box 49f, Lubbock, TX .....	(806) 747-8923
Med Flight Air Amb 2301 Yale Blvd SE #D3, Albuq, NM .....	(505) 842-4433
S B Air Med Svc 2505 Clark Carr Loop SE, Albuq, NM .....	(505) 842-4949

# Yates Petroleum Corporation

## Hydrogen Sulfide Drilling Operation Plan

### I. HYDROGEN SULFIDE TRAINING

All personnel, whether regularly assigned, contracted, or employed on an unscheduled basis, will receive training from a qualified instructor in the following areas prior to commencing drilling operations on this well:

1. *The hazards and characteristics of hydrogen sulfide (H<sub>2</sub>S).*
2. The proper use and maintenance of personal protective equipment and life support systems.
3. The proper use of H<sub>2</sub>S detectors, alarms, warning systems, briefing areas, evacuation procedures, and prevailing winds.
4. The proper techniques for first aid and rescue procedures.

In addition, supervisory personnel will be trained in the following areas:

1. The effects of H<sub>2</sub>S on metal components. If high tensile tubular are to be used, personnel will be trained in their special maintenance requirements.
2. Corrective action and shut-in procedures when drilling or reworking a well and blowout prevention and well control procedures.
3. The contents and requirements of the H<sub>2</sub>S Drilling Operations Plan and H<sub>2</sub>S Contingency Plan.

There will be an initial training session just prior to encountering a known or probable H<sub>2</sub>S zone (within 3 days or 500 feet) and weekly H<sub>2</sub>S and well control drills for all personnel in each crew. The initial training session shall include a review of the site specific H<sub>2</sub>S Drilling Operation Plan and the H<sub>2</sub>S Contingency Plan. **The location of this well does not require a Public Protection Plan.**

## II. H2S SAFETY EQUIPMENT AND SYSTEMS

NOTE: All H2S safety equipment and systems will be installed, tested, and operational when drilling reaches a depth of 500 feet above, or three days prior to penetrating the first zone containing or reasonably expected to contain H2S.

### 1. Well Control Equipment:

- A. Flare line
- B. Choke manifold will have a remotely operated adjustable choke system.
- C. Blind rams and pipe rams to accommodate all pipe sizes with properly sized closing unit
- D. Auxiliary equipment may include if applicable: annular preventer & rotating head.

### 2. Protective equipment for essential personnel:

- A. Mark II Survive Air (or equivalent) 30-minute units located in the doghouse and at briefing areas, as indicated on well site diagram.

### 3. H2S detection and monitoring equipment:

- A. 3 portable H2S monitors positioned at: Shale Shaker, Bell Nipple, and Rig Floor. These units have warning lights and audible sirens when H2S levels of 10 PPM are reached.

### 4. Visual warning systems:

- A. Wind direction indicators as shown on well site diagram (attached).
- B. *Caution/Danger signs (attached) shall be posted on roads providing direct access to location. Signs will be painted with high visibility yellow with black lettering of a sufficient size to be readable at a reasonable distance from the immediate location. Bilingual signs will be used, when appropriate. See example attached.*

### 5. Mud program:

- A. The mud program has been designed to minimize the volume of H2S circulated to the surface. Proper mud weight, safe drilling practices and the use of H2S scavengers will minimize hazards when penetrating H2S bearing zones.

### 6. Metallurgy:

- A. All drill strings, casings, tubing, wellhead, blowout preventer, drilling spool, kill lines, choke manifold and lines, and valves shall be suitable for H2S service.
- B. All elastomers used for packing and seals shall be H2S trim.

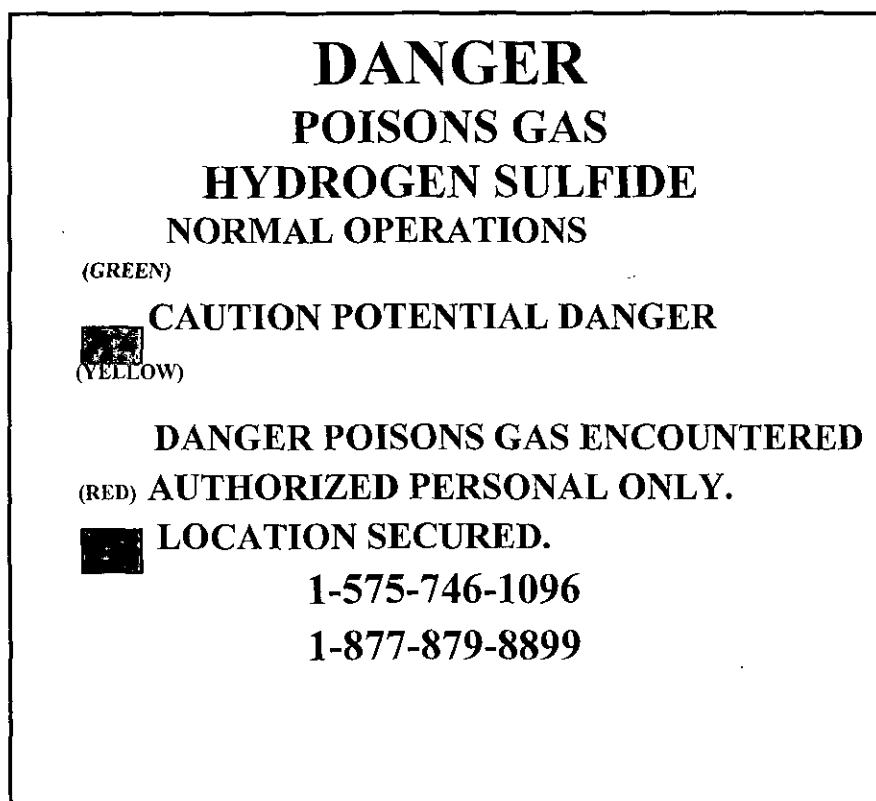
**7. Communication:**

- A. Cellular communications in company vehicles.
- B. Land line (telephone) communication at the Office.

**8. Well testing:**

- A. There will be no drill stem testing.

**EXHIBIT**



**EDDY COUNTY EMERGENCY NUMBERS**

ARTESIA FIRE DEPT. 575-746-5050  
9308  
ARTESIA POLICE DEPT. 575-746-5000  
9285  
EDDY CO. SHERIFF DEPT. 575-746-9888  
396-1196

**LEA COUNTY EMERGENCY**

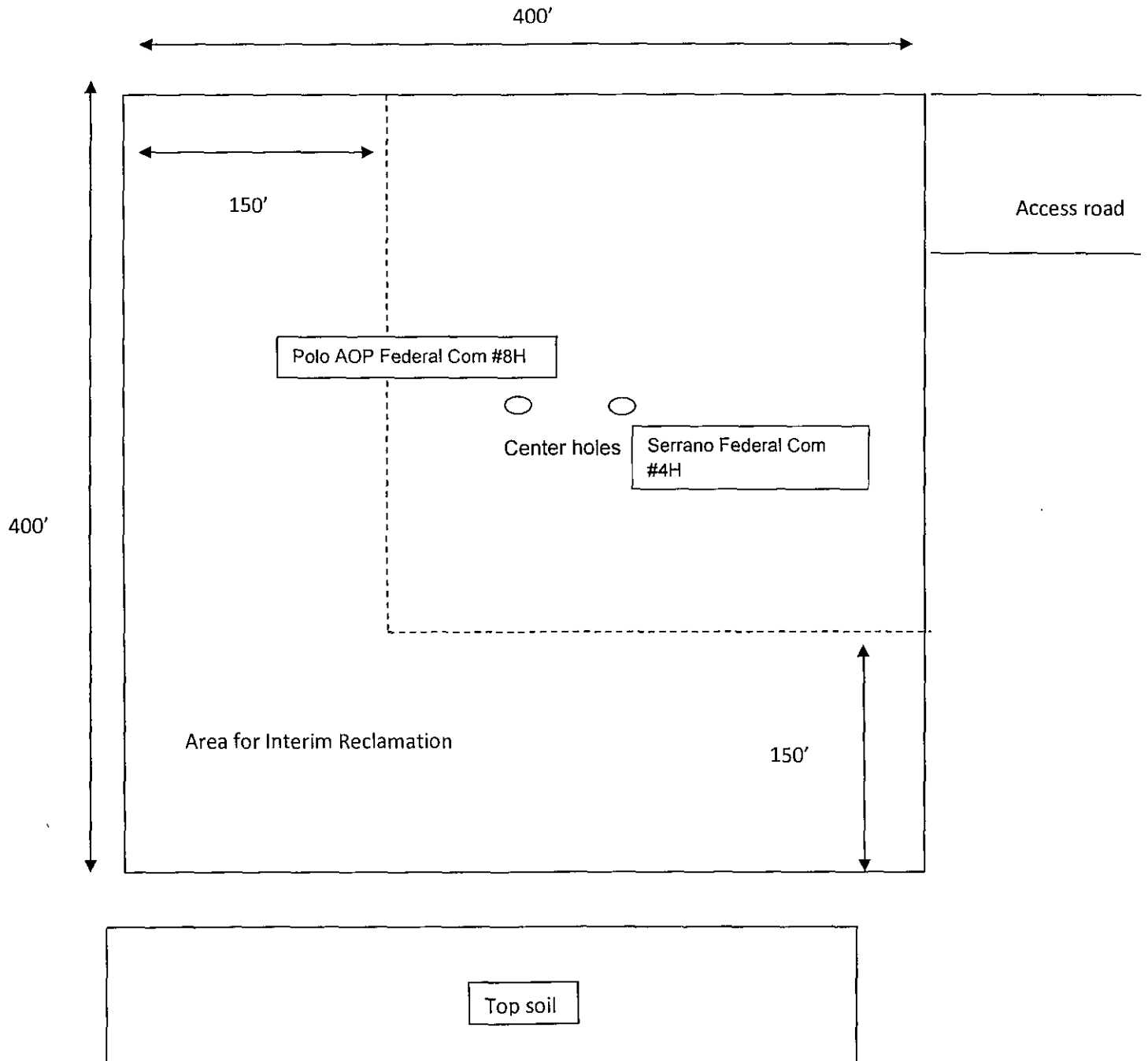
HOBBS FIRE DEPT. 575-397-  
HOBBS POLICE DEPT. 575-397-  
LEA CO. SHERIFF DEPT. 575-



## Interim Reclamation Well Pad Layout Example\*

\*dimensions and locations will vary and are not intending to be actual representations. Final plans will be discussed with the BLM and Yates at time of interim reclamation.

North



# MULTI-POINT SURFACE USE AND OPERATIONS PLAN

## Yates Petroleum Corporation

Serrano Federal Com #4H

480' FSL and 15' FWL - Surface Hole Location

400' FSL and 230' FEL -Bottom Hole Location

Section 11, T19S-R25E

Eddy County, New Mexico

This plan is submitted with Form 3160-3, Application for Permit to Drill, covering the above described well. The purpose of this plan is to describe the location of the proposed well, the proposed construction activities and operations plan, the magnitude of the surface disturbance involved and the procedures to be followed in rehabilitating the surface after completion of the operations, so that a complete appraisal can be made of the environmental effect associated with the operations.

### 1. EXISTING ROADS:

(See Exhibit) is a portion of the County map showing the well and roads in the vicinity of the *proposed location*. The *proposed well site* is located approximately 10 miles south of Artesia, New Mexico and the access route to the location is indicated on Exhibit. Operator will maintain existing roads in condition the same or better than before operations begin. Operator will repair pot holes, clear ditches, repair the crown, etc. All existing structures along the entire access route such as cattle guards, other range improvement projects, culverts, etc. will be properly repaired or replaced if they are damaged or have deteriorated beyond practical use. Operator will reasonably prevent and abate fugitive dust as needed when created by vehicular traffic and equipment caused by the operator. The BLM's written approval will be acquired before application of surfactants, binding agents, or other dust suppression chemicals on public or federal roadways.

#### DIRECTIONS:

(See Exhibit) From Artesia, go South on highway 285 for approximately 10.5 miles. Turn right (West) onto CR 21 (Rocking R Red Road). Travel west on CR 21 (Rocking R Red Road) 4 Miles and turn Right (North) onto lease road and continue for 0.7 of a mile, veer right (East) and continue through the draw for 0.6 of a mile. Turn North at the Serrano Federal #1 location and tank battery and continue west for 488'. The road will enter on the Northeast corner of the Serrano Federal Com #4H and the Polo AOP Federal Com #8H location.

### 2. PLANNED ACCESS ROAD.

- A. (See Exhibit) The proposed new access road will go for approximately 488' feet from the point of origin to the Southeast corner of well location. The road will lie in a east to west *direction*. The road will be crowned and ditched to a 2% slope from the tip of the crown to the edge of the driving surface.
- B. The road is already there, but repairs will be 14 feet in width (driving surface) and will be adequately drained to control to control runoff and soil erosion. Ditches will be 3' wide with a 3:1 slopes.
- C. Existing roads will be maintained in the same or better condition.
- D. The route of road is visible.
- E. The proposed new lease road is represented in Exhibits.

### 3. LOCATION OF EXISTING WELL

- A. There is no drilling activity within a one-mile radius of the well site.
- B. Exhibits shows existing wells within a one-mile radius of the proposed well site.

4. LOCATION OF EXISTING AND/OR PROPOSED FACILITIES

- A. There are production facilities on this lease at the present time.
- B. There will flowline from proposed location to the existing Serrano Battery.

5. LOCATION AND TYPE OF WATER SUPPLY:

- A. It is planned to drill the proposed well with a fresh water system. The water will be obtained from commercial sources and will be hauled to the location by truck over the existing and proposed roads shown in Exhibit or through fast lines provided by said commercial source.

6. SOURCE OF CONSTRUCTION MATERIALS:

Dirt contractor will locate closest pit and obtain any permits and materials needed for construction of the well location.

7. METHODS OF HANDLING WASTE DISPOSAL:

- A. This well will be drilled with a closed loop system
- B. *The closed loop system will be constructed, maintained, and closed in compliance with the State of New Mexico, Energy and Natural Resources Department, Oil Conservation Division – the "Pit Rule" 19.15.17 NMAC.*
- C. Drilling fluids will be removed after drilling and completions are completed.
- D. Water produced during operations will be collected in tanks until hauled to an approved disposal system, or separate disposal application will be submitted.
- E. Oil produced during operations will be stored in tanks until sold.
- F. Current laws and regulations pertaining to the disposal of human waste will be complied with.
- G. All trash, junk, and other waste materials will be contained in trash cages or bins to prevent scattering and will be removed and deposited in an approved sanitary landfill. Burial on site is not approved.

8. ANCILLARY FACILITIES: None.

9. WELLSITE LAYOUT:

- A. Attached exhibit shows the relative location and dimensions of the well pad, the closed loop mud system, location of the drilling equipment. All of the location will be constructed within the 600' x. 600' staked area.
- B. A 600' x 600' area has been staked and flagged.

10. PLANS FOR RESTORATION:

- A. After finishing drilling and/or completion operations, all equipment and other material not needed for further operations will be removed. The location will be cleaned of all trash and junk to leave the well site in as aesthetically pleasing a condition as possible. The location will be reduced to a 280' x 250' after completion operations have been conducted. At this point the surfacing material will be removed and topsoil will be redistributed. The area will be contoured as closely as possible to its original state and reseeded. Please note attached Reclamation Plat.
- B. If the proposed well is plugged and abandoned, all equipment and other material will be removed. The location will be cleaned of all trash and junk to leave the well site in as aesthetically pleasing a condition as possible. At this point the surfacing material will be

removed, topsoil will be redistributed. The area will be contoured as closely as possible to its original location and reseeded. These actions will be completed and accomplished as expeditiously as possible.

- C. *The reclamation of the pad will be done in sixty days if possible after the well is put in production.*

11. SURFACE OWNERSHIP:

Surface Estate: Wilbanks Land and Cattle  
634 Rock Daisy  
Artesia, NM 88210

Mineral Estate: Federal Lease NM-12833  
Bureau of Land Management  
620 East Greene Street, Carlsbad, NM 88220

12. OTHER INFORMATION:

- A. Topography: Refer to the existing archaeological report for a description of the topography, flora, fauna, soil characteristics, dwellings, historical and cultural sites.
- B. The primary surface use is for grazing.

# PECOS DISTRICT

## CONDITIONS OF APPROVAL

OPERATOR'S NAME:	Yates Petroleum Corp
LEASE NO.:	NM92748
WELL NAME & NO.:	4H-Serrano Federal Com
SURFACE HOLE FOOTAGE:	480'/S & 15'/W
BOTTOM HOLE FOOTAGE	400'/S & 230'/E
LOCATION:	Section 11, T. 19 S., R. 25 E., NMPM
COUNTY:	Eddy County, New Mexico

### TABLE OF CONTENTS

Standard Conditions of Approval (COA) apply to this APD. If any deviations to these standards exist or special COAs are required, the section with the deviation or requirement will be checked below.

- ☐ **General Provisions**
- ☐ **Permit Expiration**
- ☐ **Archaeology, Paleontology, and Historical Sites**
- ☐ **Noxious Weeds**
- ☒ **Special Requirements**
  - Communitization Agreement
  - Ground-level Abandoned Well Marker
  - Cave/Karst
  - Cultural
- ☐ **Construction**
  - Notification
  - Topsoil
  - Closed Loop System
  - Federal Mineral Material Pits
  - Well Pads
  - Roads
- ☐ **Road Section Diagram**
- ☒ **Drilling**
  - Cement Requirements
  - H2S Requirements
  - Logging Requirements
  - Waste Material and Fluids
- ☐ **Production (Post Drilling)**
  - Well Structures & Facilities
- ☐ **Interim Reclamation**
- ☐ **Final Abandonment & Reclamation**

## **I. GENERAL PROVISIONS**

The approval of the Application For Permit To Drill (APD) is in compliance with all applicable laws and regulations: 43 Code of Federal Regulations 3160, the lease terms, Onshore Oil and Gas Orders, Notices To Lessees, New Mexico Oil Conservation Division (NMOCD) Rules, National Historical Preservation Act As Amended, and instructions and orders of the Authorized Officer. Any request for a variance shall be submitted to the Authorized Officer on Form 3160-5, Sundry Notices and Report on Wells.

## **II. PERMIT EXPIRATION**

If the permit terminates prior to drilling and drilling cannot be commenced within 60 days after expiration, an operator is required to submit Form 3160-5, Sundry Notices and Reports on Wells, requesting surface reclamation requirements for any surface disturbance. However, if the operator will be able to initiate drilling within 60 days after the expiration of the permit, the operator must have set the conductor pipe in order to allow for an extension of 60 days beyond the expiration date of the APD. (Filing of a Sundry Notice is required for this 60 day extension.)

## **III. ARCHAEOLOGICAL, PALEONTOLOGY & HISTORICAL SITES**

Any cultural and/or paleontological resource discovered by the operator or by any person working on the operator's behalf shall immediately report such findings to the Authorized Officer. The operator is fully accountable for the actions of their contractors and subcontractors. The operator shall suspend all operations in the immediate area of such discovery until written authorization to proceed is issued by the Authorized Officer. An evaluation of the discovery shall be made by the Authorized Officer to determine the appropriate actions that shall be required to prevent the loss of significant cultural or scientific values of the discovery. The operator shall be held responsible for the cost of the proper mitigation measures that the Authorized Officer assesses after consultation with the operator on the evaluation and decisions of the discovery. Any unauthorized collection or disturbance of cultural or paleontological resources may result in a shutdown order by the Authorized Officer.

## **IV. NOXIOUS WEEDS**

The operator shall be held responsible if noxious weeds become established within the areas of operations. Weed control shall be required on the disturbed land where noxious weeds exist, which includes the roads, pads, associated pipeline corridor, and adjacent land affected by the establishment of weeds due to this action. The operator shall consult with the Authorized Officer for acceptable weed control methods, which include following EPA and BLM requirements and policies.

## **V. SPECIAL REQUIREMENT(S)**

### **Communitization Agreement**

1. The operator will submit a Communitization Agreement to the Carlsbad Field Office, 620 E Greene St. Carlsbad, New Mexico 88220, at least 90 days before the anticipated date of first production from a well subject to a spacing order issued by the New Mexico Oil Conservation Division. The Communitization Agreement will include the signatures of all working interest owners in all Federal and Indian leases subject to the Communitization Agreement (i.e., operating rights owners and lessees of record), or certification that the operator has obtained the written signatures of all such owners and will make those signatures available to the BLM immediately upon request.
2. If the operator does not comply with this condition of approval, the BLM may take enforcement actions that include, but are not limited to, those specified in 43 CFR 3163.1.
3. In addition, the well sign shall include the surface and bottom hole lease numbers. When the Communitization Agreement number is known, it shall also be on the sign.

## **VI. CONSTRUCTION**

### **A. NOTIFICATION**

The BLM shall administer compliance and monitor construction of the access road and well pad. Notify the Carlsbad Field Office at (575) 234-5909 at least 3 working days prior to commencing construction of the access road and/or well pad.

When construction operations are being conducted on this well, the operator shall have the approved APD and Conditions of Approval (COA) on the well site and they shall be made available upon request by the Authorized Officer.

### **B. TOPSOIL**

The operator shall strip the top portion of the soil (root zone) from the entire well pad area and stockpile the topsoil along the edge of the well pad as depicted in the APD. The root zone is typically six (6) inches in depth. All the stockpiled topsoil will be redistributed over the interim reclamation areas. Topsoil shall not be used for berming the pad or facilities. For final reclamation, the topsoil shall be spread over the entire pad area for seeding preparation.

Other subsoil (below six inches) stockpiles must be completely segregated from the topsoil stockpile. Large rocks or subsoil clods (not evident in the surrounding terrain) must be buried within the approved area for interim and final reclamation.

### **C. CLOSED LOOP SYSTEM**

Tanks are required for drilling operations: No Pits.

The operator shall properly dispose of drilling contents at an authorized disposal site.

### **D. FEDERAL MINERAL MATERIALS PIT**

Payment shall be made to the BLM prior to removal of any federal mineral materials. Call the Carlsbad Field Office at (575) 234-5972.

### **E. WELL PAD SURFACING**

Surfacing of the well pad is not required.

If the operator elects to surface the well pad, the surfacing material may be required to be removed at the time of reclamation. The well pad shall be constructed in a manner which creates the smallest possible surface disturbance, consistent with safety and operational needs.



## **F. EXCLOSURE FENCING (CELLARS & PITS)**

### **Exclosure Fencing**

The operator will install and maintain exclosure fencing for all open well cellars to prevent access to public, livestock, and large forms of wildlife before and after drilling operations until the pit is free of fluids and the operator initiates backfilling. (For examples of exclosure fencing design, refer to BLM's Oil and Gas Gold Book, Exclosure Fence Illustrations, Figure 1, Page 18.)

## **G. ON LEASE ACCESS ROADS**

### **Road Width**

The access road shall have a driving surface that creates the smallest possible surface disturbance and does not exceed fourteen (14) feet in width. The maximum width of surface disturbance, when constructing the access road, shall not exceed twenty-five (25) feet.

### **Surfacing**

Surfacing material is not required on the new access road driving surface. If the operator elects to surface the new access road or pad, the surfacing material may be required to be removed at the time of reclamation.

Where possible, no improvements should be made on the unsurfaced access road other than to remove vegetation as necessary, road irregularities, safety issues, or to fill low areas that may sustain standing water.

The Authorized Officer reserves the right to require surfacing of any portion of the access road at any time deemed necessary. Surfacing may be required in the event the road deteriorates, erodes, road traffic increases, or it is determined to be beneficial for future field development. The surfacing depth and type of material will be determined at the time of notification.

### **Crowning**

Crowning shall be done on the access road driving surface. The road crown shall have a grade of approximately 2% (i.e., a 1" crown on a 14' wide road). The road shall conform to Figure 1; cross section and plans for typical road construction.

### **Ditching**

Ditching shall be required on both sides of the road.

### **Turnouts**

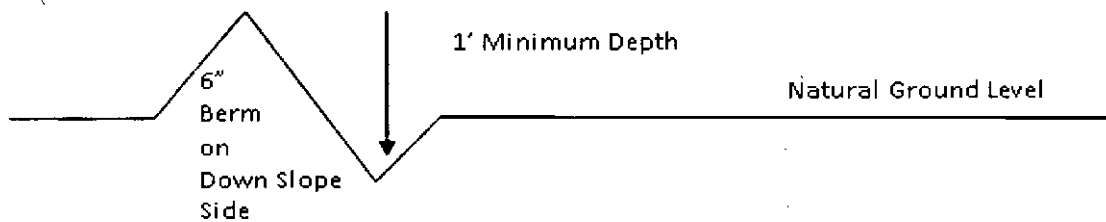
Vehicle turnouts shall be constructed on the road. Turnouts shall be intervisible with interval spacing distance less than 1000 feet. Turnouts shall conform to Figure 1; cross section and plans for typical road construction.

### **Drainage**

Drainage control systems shall be constructed on the entire length of road (e.g. ditches, sidehill out sloping and insloping, lead-off ditches, culvert installation, and low water crossings).

A typical lead-off ditch has a minimum depth of 1 foot below and a berm of 6 inches above natural ground level. The berm shall be on the down-slope side of the lead-off ditch.

#### **Cross Section of a Typical Lead-off Ditch**



All lead-off ditches shall be graded to drain water with a 1 percent minimum to 3 percent maximum ditch slope. The spacing interval are variable for lead-off ditches and shall be determined according to the formula for spacing intervals of lead-off ditches, but may be amended depending upon existing soil types and centerline road slope (in %);

#### **Formula for Spacing Interval of Lead-off Ditches**

Example - On a 4% road slope that is 400 feet long, the water flow shall drain water into a lead-off ditch. Spacing interval shall be determined by the following formula:

$$400 \text{ foot road with } 4\% \text{ road slope: } \frac{400'}{4\%} + 100' = 200' \text{ lead-off ditch interval}$$

### **Cattleguards**

An appropriately sized cattleguard sufficient to carry out the project shall be installed and maintained at fence/road crossings. Any existing cattleguards on the access road route shall be repaired or replaced if they are damaged or have deteriorated beyond practical use. The operator shall be responsible for the condition of the existing cattleguards that are in place and are utilized during lease operations.

### **Fence Requirement**

Where entry is granted across a fence line, the fence shall be braced and tied off on both sides of the passageway prior to cutting. The operator shall notify the private surface landowner or the grazing allotment holder prior to crossing any fences.

## Public Access

Public access on this road shall not be restricted by the operator without specific written approval granted by the Authorized Officer.

### Construction Steps

1. Salvage topsoil
2. Construct road
3. Redistribute topsoil
4. Revegetate slopes

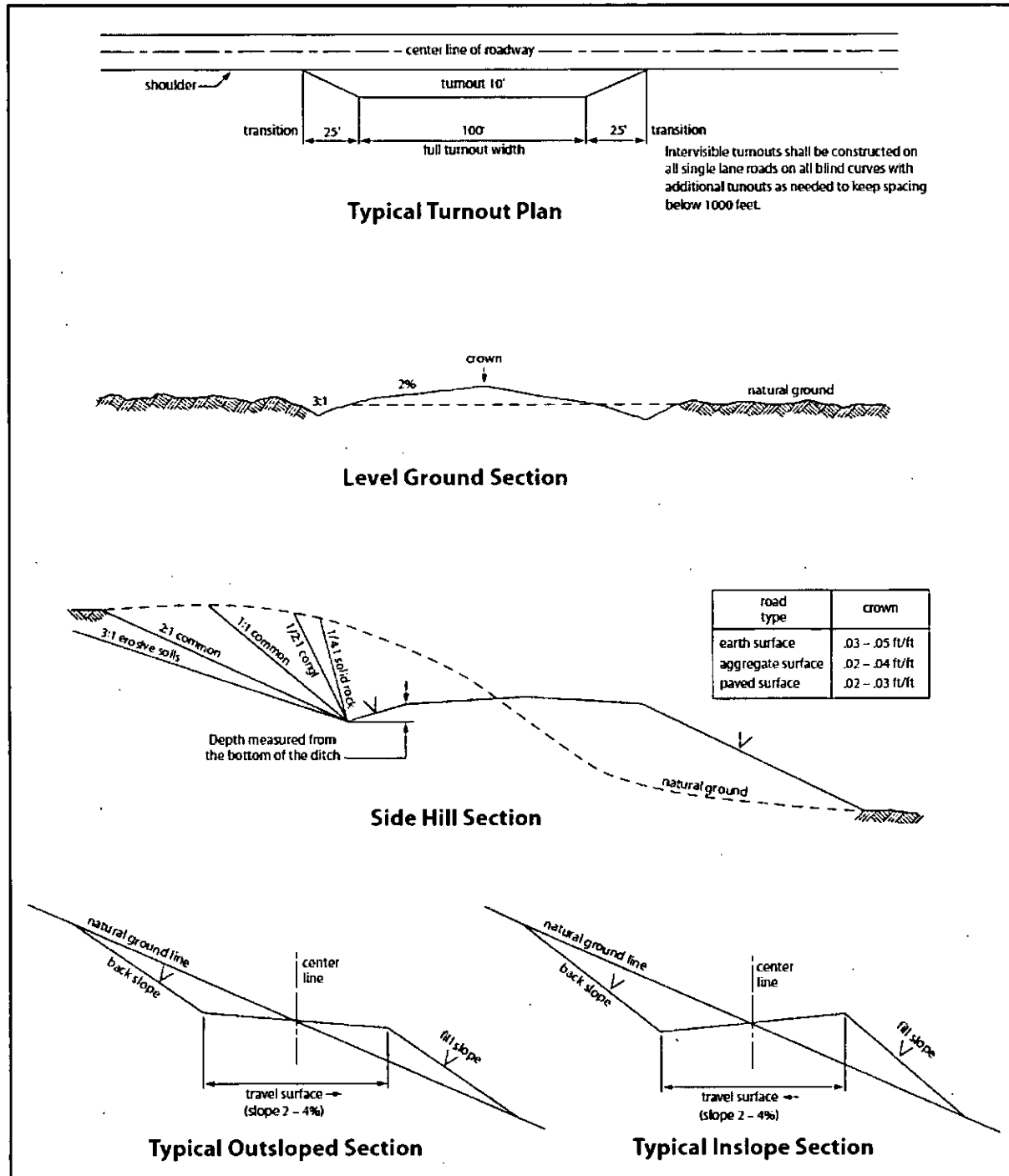


Figure 1. Cross-sections and plans for typical road sections representative of BLM resource or FS local and higher-class roads.

## **VII. DRILLING**

### **A. DRILLING OPERATIONS REQUIREMENTS**

The BLM is to be notified in advance for a representative to witness:

- a. Spudding well (minimum of 24 hours)
- b. Setting and/or Cementing of all casing strings (minimum of 4 hours)
- c. BOPE tests (minimum of 4 hours)

☒ **Eddy County**

Call the Carlsbad Field Office, 620 East Greene St., Carlsbad, NM 88220,  
(575) 361-2822

1. **Hydrogen Sulfide has been reported as a hazard in formations deeper than the proposed depth. It is recommended that monitoring equipment be onsite for potential Hydrogen Sulfide. If Hydrogen Sulfide is encountered, report measurements and formations to the BLM.**
2. Unless the production casing has been run and cemented or the well has been properly plugged, the drilling rig shall not be removed from over the hole without prior approval. **If the drilling rig is removed without approval – an Incident of Non-Compliance will be written and will be a “Major” violation.**
3. Floor controls are required for 3M or Greater systems. These controls will be on the rig floor, unobstructed, readily accessible to the driller and will be operational at all times during drilling and/or completion activities. Rig floor is defined as the area immediately around the rotary table; the area immediately above the substructure on which the draw works is located, this does not include the dog house or stairway area.
4. **The record of the drilling rate along with the GR/N well log run from TD to surface (horizontal well – vertical portion of hole) shall be submitted to the BLM office as well as all other logs run on the borehole 30 days from completion. If available, a digital copy of the logs is to be submitted in addition to the paper copies. The Rustler top and top and bottom of Salt are to be recorded on the Completion Report.**

### **B. CASING**

**Changes to the approved APD casing program need prior approval if the items substituted are of lesser grade or different casing size or are Non-API. The Operator can exchange the components of the proposal with that of superior strength (i.e. changing from J-55 to N-80, or from 36# to 40#). Changes to the approved cement program need prior approval if the altered cement plan has less volume or strength or if the changes are substantial (i.e. Multistage tool, ECP, etc.). The initial wellhead installed on the well will remain on the well with spools used as needed.**

**Wait on cement (WOC) for Water Basin:**

After cementing but before commencing any tests, the casing string shall stand cemented under pressure until both of the following conditions have been met: 1) cement reaches a minimum compressive strength of 500 psi at the shoe, 2) until cement has been in place at least 8 hours. WOC time will be recorded in the driller's log. See individual casing strings for details regarding lead cement slurry requirements. DURING THIS WOC TIME, NO DRILL PIPE, ETC. SHALL BE RUN IN THE HOLE.

Provide compressive strengths including hours to reach required 500 pounds compressive strength prior to cementing each casing string. Have well specific cement details onsite prior to pumping the cement for each casing string.

No pea gravel permitted for remedial or fall back remedial without prior authorization from the BLM engineer.

**Risks:**

**Medium Cave/Karst**

**Possibility of Lost Circulation in the San Andres**

1. The 9 5/8 inch surface casing shall be set at approximately 1000 feet and cemented to the surface.
  - a. If cement does not circulate to the surface, the appropriate BLM office shall be notified and a temperature survey utilizing an electronic type temperature survey with surface log readout will be used or a cement bond log shall be run to verify the top of the cement. Temperature survey will be run a minimum of six hours after pumping cement and ideally between 8-10 hours after completing the cement job.
  - b. Wait on cement (WOC) time for a primary cement job is to include the lead cement slurry.
  - c. Wait on cement (WOC) time for a remedial job will be a minimum of 4 hours after bringing cement to surface or 500 pounds compressive strength, whichever is greater.
  - d. If cement falls back, remedial cementing will be done prior to drilling out that string.
2. The minimum required fill of cement behind the 5 1/2 inch production casing is:  
☒ Cement to surface. If cement does not circulate, contact the appropriate BLM office.
3. If hardband drill pipe is rotated inside casing, returns will be monitored for metal. If metal is found in samples, drill pipe will be pulled and rubber protectors which have a

larger diameter than the tool joints of the drill pipe will be installed prior to continuing drilling operations.

### C. PRESSURE CONTROL

1. Minimum working pressure of the blowout preventer (BOP) and related equipment (BOPE) required for drilling below the surface casing shoe shall be 3000 (3M) psi.
  - a. **For surface casing only:** If the BOP/BOPE is to be tested against casing, the wait on cement (WOC) time for that casing is to be met (see WOC statement at start of casing section). Independent service company required.
2. The appropriate BLM office shall be notified a minimum of 4 hours in advance for a representative to witness the tests.
  - a. In a water basin, for all casing strings utilizing slips, these are to be set as soon as the crew and rig are ready and any fallback cement remediation has been done. The casing cut-off and BOP installation can be initiated four hours after installing the slips, which will be approximately six hours after bumping the plug. For those casing strings not using slips, the minimum wait time before cut-off is eight hours after bumping the plug. BOP/BOPE testing can begin after cut-off or once cement reaches 500 psi compressive strength (including lead when specified), whichever is greater. However, if the float does not hold, cut-off cannot be initiated until cement reaches 500 psi compressive strength (including lead when specified).
  - b. The tests shall be done by an independent service company utilizing a test plug **not a cup or J-packer**. The operator also has the option of utilizing an independent tester to test without a plug (i.e. against the casing) pursuant to Onshore Order 2 with the pressure not to exceed 70% of the burst rating for the casing. Any test against the casing must meet the WOC time for water basin (8 hours) or potash (24 hours) or 500 pounds compressive strength, whichever is greater, prior to initiating the test (see casing segment as lead cement may be critical item).
  - c. The test shall be run on a 5000 psi chart for a 2-3M BOP/BOP, on a 10000 psi chart for a 5M BOP/BOPE and on a 15000 psi chart for a 10M BOP/BOPE. If a linear chart is used, it shall be a one hour chart. A circular chart shall have a maximum 2 hour clock. If a twelve hour or twenty-four hour chart is used, tester shall make a notation that it is run with a two hour clock.
  - d. The results of the test shall be reported to the appropriate BLM office.
  - e. All tests are required to be recorded on a calibrated test chart. **A copy of the BOP/BOPE test chart and a copy of independent service company test will be submitted to the appropriate BLM office.**

- f. The BOP/BOPE test shall include a low pressure test from 250 to 300 psi. The test will be held for a minimum of 10 minutes if test is done with a test plug and 30 minutes without a test plug. This test shall be performed prior to the test at full stack pressure.

#### **D. WASTE MATERIAL AND FLUIDS**

All waste (i.e. drilling fluids, trash, salts, chemicals, sewage, gray water, etc.) created as a result of drilling operations and completion operations shall be safely contained and disposed of properly at a waste disposal facility. No waste material or fluid shall be disposed of on the well location or surrounding area.

Porto-johns and trash containers will be on-location during fracturing operations or any other crew-intensive operations.

**CLN 033016**

### **VIII. PRODUCTION (POST DRILLING)**

#### **A. WELL STRUCTURES & FACILITIES**

##### **Placement of Production Facilities**

Production facilities should be placed on the well pad to allow for maximum interim recontouring and revegetation of the well location.

##### **Exclosure Netting (Open-top Tanks)**

Immediately following active drilling or completion operations, the operator will take actions necessary to prevent wildlife and livestock access, including avian wildlife, to all open-topped tanks that contain or have the potential to contain salinity sufficient to cause harm to wildlife or livestock, hydrocarbons, or Resource Conservation and Recovery Act of 1976-exempt hazardous substances. At a minimum, the operator will net, screen, or cover open-topped tanks to exclude wildlife and livestock and prevent mortality. If the operator uses netting, the operator will cover and secure the open portion of the tank to prevent wildlife entry. The operator will net, screen, or cover the tanks until the operator removes the tanks from the location or the tanks no longer contain substances that could be harmful to wildlife or livestock. Use a maximum netting mesh size of 1 ½ inches. The netting must not be in contact with fluids and must not have holes or gaps.

##### **Chemical and Fuel Secondary Containment and Exclosure Screening**

The operator will prevent all hazardous, poisonous, flammable, and toxic substances from coming into contact with soil and water. At a minimum, the operator will install and maintain an impervious secondary containment system for any tank or barrel containing hazardous, poisonous, flammable, or toxic substances sufficient to contain the contents of the tank or barrel and any drips, leaks, and anticipated precipitation. The operator will dispose of fluids within the containment system that do not meet applicable state or U. S.

Environmental Protection Agency livestock water standards in accordance with state law; the operator must not drain the fluids to the soil or ground. The operator will design, construct, and maintain all secondary containment systems to prevent wildlife and livestock exposure to harmful substances. At a minimum, the operator will install effective wildlife and livestock enclosure systems such as fencing, netting, expanded metal mesh, lids, and grate covers. Use a maximum netting mesh size of 1 ½ inches.

#### **Open-Vent Exhaust Stack Enclosures**

The operator will construct, modify, equip, and maintain all open-vent exhaust stacks on production equipment to prevent birds and bats from entering, and to discourage perching, roosting, and nesting. *(Recommended enclosure structures on open-vent exhaust stacks are in the shape of a cone.)* Production equipment includes, but may not be limited to, tanks, heater-treaters, separators, dehydrators, flare stacks, in-line units, and compressor mufflers.

#### **Containment Structures**

Proposed production facilities such as storage tanks and other vessels will have a secondary containment structure that is constructed to hold the capacity of 1.5 times the largest tank, plus freeboard to account for precipitation, unless more stringent protective requirements are deemed necessary.

#### **Painting Requirement**

All above-ground structures including meter housing that are not subject to safety requirements shall be painted a flat non-reflective paint color, **Shale Green** from the BLM Standard Environmental Color Chart (CC-001: June 2008).

## **IX. INTERIM RECLAMATION**

During the life of the development, all disturbed areas not needed for active support of production operations should undergo interim reclamation in order to minimize the environmental impacts of development on other resources and uses.

Within six (6) months of well completion, operators should work with BLM surface management specialists (Jim Amos: 575-234-5909) to devise the best strategies to reduce the size of the location. Interim reclamation should allow for remedial well operations, as well as safe and efficient removal of oil and gas.

During reclamation, the removal of caliche is important to increasing the success of revegetating the site. Removed caliche that is free of contaminants may be used for road repairs, fire walls or for building other roads and locations. In order to operate the well or complete workover operations, it may be necessary to drive, park and operate on restored interim vegetation within the previously disturbed area. Disturbing revegetated areas for production or workover operations will be allowed. If there is significant disturbance and loss of vegetation, the area will need to be revegetated. Communicate with the appropriate BLM office for any exceptions/exemptions if needed.



All disturbed areas after they have been satisfactorily prepared need to be reseeded with the seed mixture provided below.

Upon completion of interim reclamation, the operator shall submit a Sundry Notices and Reports on Wells, Subsequent Report of Reclamation (Form 3160-5).

## **X. FINAL ABANDONMENT & RECLAMATION**

At final abandonment, well locations, production facilities, and access roads must undergo "final" reclamation so that the character and productivity of the land are restored.

Earthwork for final reclamation must be completed within six (6) months of well plugging. All pads, pits, facility locations and roads must be reclaimed to a satisfactory revegetated, safe, and stable condition, unless an agreement is made with the landowner or BLM to keep the road and/or pad intact.

After all disturbed areas have been satisfactorily prepared, these areas need to be revegetated with the seed mixture provided below. Seeding should be accomplished by drilling on the contour whenever practical or by other approved methods. Seeding may need to be repeated until revegetation is successful, as determined by the BLM.

Operators shall contact a BLM surface protection specialist prior to surface abandonment operations for site specific objectives (Jim Amos: 575-234-5909).

## Seed Mixture 1, for Loamy Sites

The holder shall seed all disturbed areas with the seed mixture listed below. The seed mixture shall be planted in the amounts specified in pounds of pure live seed (PLS)\* per acre. There shall be no primary or secondary noxious weeds in the seed mixture. Seed will be tested and the viability testing of seed will be done in accordance with State law(s) and within nine (9) months prior to purchase. Commercial seed will be either certified or registered seed. The seed container will be tagged in accordance with State law(s) and available for inspection by the authorized officer.

Seed will be planted using a drill equipped with a depth regulator to ensure proper depth regulator to ensure proper depth of planting where drilling is possible. The seed mixture will be evenly and uniformly planted over the disturbed area (small/heavier seeds have a tendency to drop the bottom of the drill and are planted first). The holder shall take appropriate measures to ensure this does not occur. Where drilling is not possible, seed will be broadcast and the area shall be raked or chained to cover the seed. When broadcasting the seed, the pounds per acre are to be doubled. The seeding will be repeated until a satisfactory stand is established as determined by the authorized officer. Evaluation of growth will not be made before completion of at least one full growing season after seeding.

Species to be planted in pounds of pure live seed\* per acre:

<u>Species</u>	<u>lb/acre</u>
Plains lovegrass ( <i>Eragrostis intermedia</i> )	0.5
Sand dropseed ( <i>Sporobolus cryptandrus</i> )	1.0
Sideoats grama ( <i>Bouteloua curtipendula</i> )	5.0
Plains bristlegrass ( <i>Setaria macrostachya</i> )	2.0

\*Pounds of pure live seed:

Pounds of seed x percent purity x percent germination = pounds pure live seed