

District I
1625 N. French Dr., Hobbs, NM 88240
Phone: (575) 393-6161 Fax: (575) 393-0720
District II
811 S. First St., Artesia, NM 88210
Phone: (575) 748-1243 Fax: (575) 748-9720
District III
1000 Rio Brazos Road, Artesia, NM 87410
Phone: (505) 334-6178 Fax: (505) 334-6170
District IV
1220 S. St. Francis Dr., Santa Fe, NM 87505
Phone: (505) 476-3460 Fax: (505) 476-3462

State of New Mexico
Energy Minerals and Natural Resources
Oil Conservation Division
1220 South St. Francis Dr.
Santa Fe, NM 87505

Form C-101
Revised July 18, 2013

APPLICATION FOR PERMIT TO DRILL, RE-ENTER, DEEPEN, PLUGBACK, OR ADD A ZONE

Operator Name and Address COG Operating LLC 2208 West Main Street Artesia, NM 88210	OGRID Number 229137 API Number 30-015-43706
Property Code 40306	Property Name Myox 5 State Well No 22H

7. Surface Location

UL - Lot	Section	Township	Range	Lot Idn	Feet from	N/S Line	Feet From	E/W Line	County
O	5	26S	28E	O	225	South	2280	East	Eddy

8. Proposed Bottom Hole Location

UL - Lot	Section	Township	Range	Lot Idn	Feet from	N/S Line	Feet From	E/W Line	County
B	32	25S	28E	B	330	North	2310	East	Eddy

9. Pool Information

Pool Name -Wolcamp Wolfcamp WC-015 G-06 52628650; UPR Wolfcamp	Pool Code 98195
--	---------------------------

Additional Well Information

11 Work Type New Well	12 Well Type Oil	13 Cable/Rotary	14 Lease Type State	15 Ground Level Elevation 3054.5'
16 Multiple N	17 Proposed Depth 19128'	18 Formation Wolfcamp	19 Contractor	20 Spud Date 4/15/2016
Depth to Ground water		Distance from nearest fresh water well		Distance to nearest surface water

☒ We will be using a closed-loop system in lieu of lined pits

21. Proposed Casing and Cement Program

Type	Hole Size	Casing Size	Casing Weight/lb	Setting Depth	Sacks of Cement	Estimated TOC
Surface	17.5	13.375	54.5	680	550	
Intmd	12.25	9.625	47	8800	1500	
Production	8.5	5.5	20	19128	3000	2200

Casing/Cement Program: Additional Comments

Plan to drill a 17.5" hole to 930' with fresh water. Run 13 3/8", 54.5# J-55 csg and cement to surface. Drill a 12.25" hole to 8800' with brine/cut brine/diesel-brine emulsion/ prehydrated bentonite mud, and run 9 5/8" 47# L80 and cement to surface in two stages. Drill out, kick off and drill an 8.5" curve and lateral to 19,128' with OBM. Run 5-1/2" 20# P110 production string and cement to surface.

22. Proposed Blowout Prevention Program

Type	Working Pressure	Test Pressure	Manufacturer
Double Ram	5000	5000	Cameron

23. I hereby certify that the information given above is true and complete to the best of my knowledge and belief. I further certify that I have complied with 19.15.14.9 (A) NMIC <input checked="" type="checkbox"/> and/or 19.15.14.9 (B) NMIC <input checked="" type="checkbox"/> if applicable. Signature: <i>Mayte Reyes</i> Printed name: Mayte Reyes Title: Regulatory Analyst E-mail Address: mreyes1@concho.com Date: 4/5/2016 Phone: 575-748-6945	<table border="1" style="width: 100%; border-collapse: collapse;"> <tr> <th colspan="2" style="text-align: center;">OIL CONSERVATION DIVISION</th> </tr> <tr> <td colspan="2"> Approved By: <i>Karen Sharp</i> </td> </tr> <tr> <td colspan="2"> Title: <i>Bus Op Spec - Adv.</i> </td> </tr> <tr> <td> Approved Date: 4-13-16 </td> <td> Expiration Date: 4-13-18 </td> </tr> <tr> <td colspan="2"> Conditions of Approval Attached <i>provide proposed directional survey</i> </td> </tr> </table>	OIL CONSERVATION DIVISION		Approved By: <i>Karen Sharp</i>		Title: <i>Bus Op Spec - Adv.</i>		Approved Date: 4-13-16	Expiration Date: 4-13-18	Conditions of Approval Attached <i>provide proposed directional survey</i>	
OIL CONSERVATION DIVISION											
Approved By: <i>Karen Sharp</i>											
Title: <i>Bus Op Spec - Adv.</i>											
Approved Date: 4-13-16	Expiration Date: 4-13-18										
Conditions of Approval Attached <i>provide proposed directional survey</i>											

DISTRICT I
1626 N. FRENCH DR., HOODES, NM 88240
Phone: (505) 303-8101 Fax: (505) 303-0720

DISTRICT II
511 S. FIRST ST., ARTESIA, NM 88210
Phone: (505) 748-1283 Fax: (505) 748-9720

DISTRICT III
1000 RIO BRAZOS RD., AZTEC, NM 87410
Phone: (505) 334-6178 Fax: (505) 334-6170

DISTRICT IV
1280 S. ST. FRANCIS DR., SANTA FE, NM 87505
Phone: (505) 478-3480 Fax: (505) 478-3482

State of New Mexico
Energy, Minerals & Natural Resources Department
OIL CONSERVATION DIVISION
1220 SOUTH ST. FRANCIS DR.
Santa Fe, New Mexico 87505

Form C-102
Revised August 1, 2011
Submit one copy to appropriate
District Office

☐ AMENDED REPORT

WELL LOCATION AND ACREAGE DEDICATION PLAT

API Number 30-015- 43706	Pool Code 98195	Pool Name WC-015 G-d 52628050; Wildcat; Wolfcamp
Property Code 40306	Property Name MYOX 5 STATE	Well Number 22H
GRID No. 229137	Operator Name COG OPERATING, LLC	Elevation 3054.5'

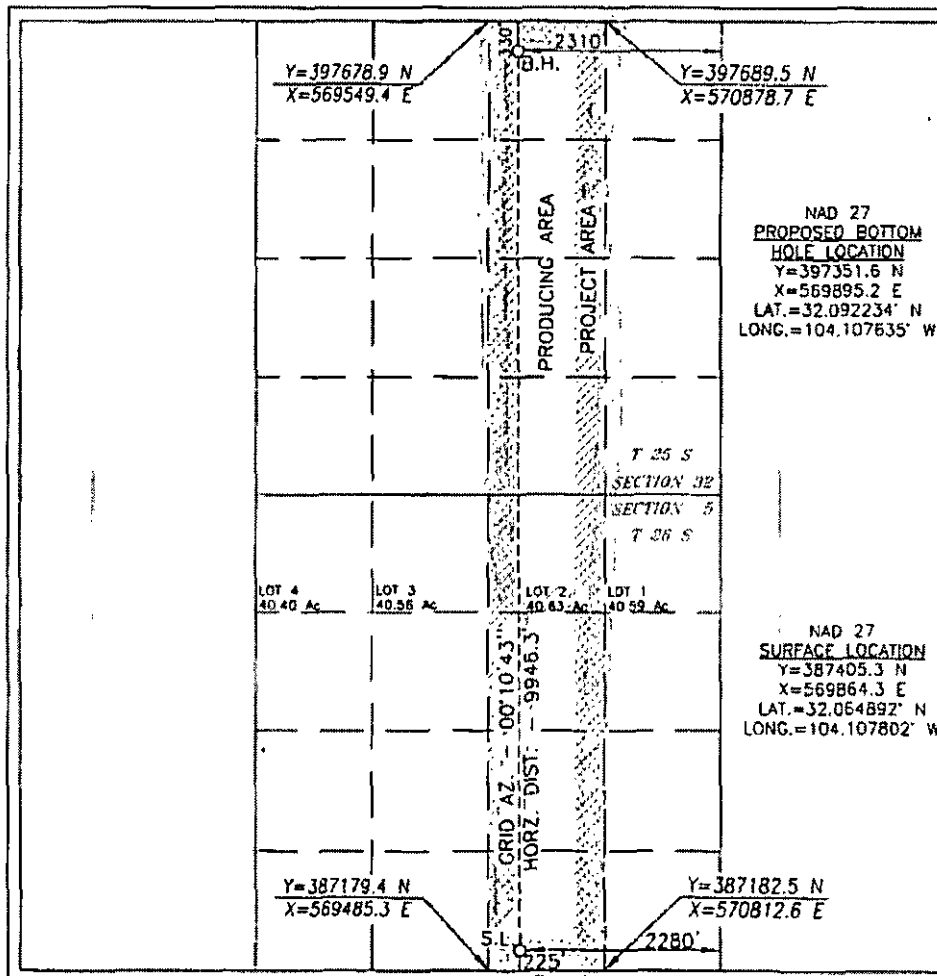
Surface Location

UL or lot No.	Section	Township	Range	Lot Idn	Feet from the	North/South line	Feet from the	East/West line	County
0	5	26-S	28-E		225	SOUTH	2280	EAST	EDDY

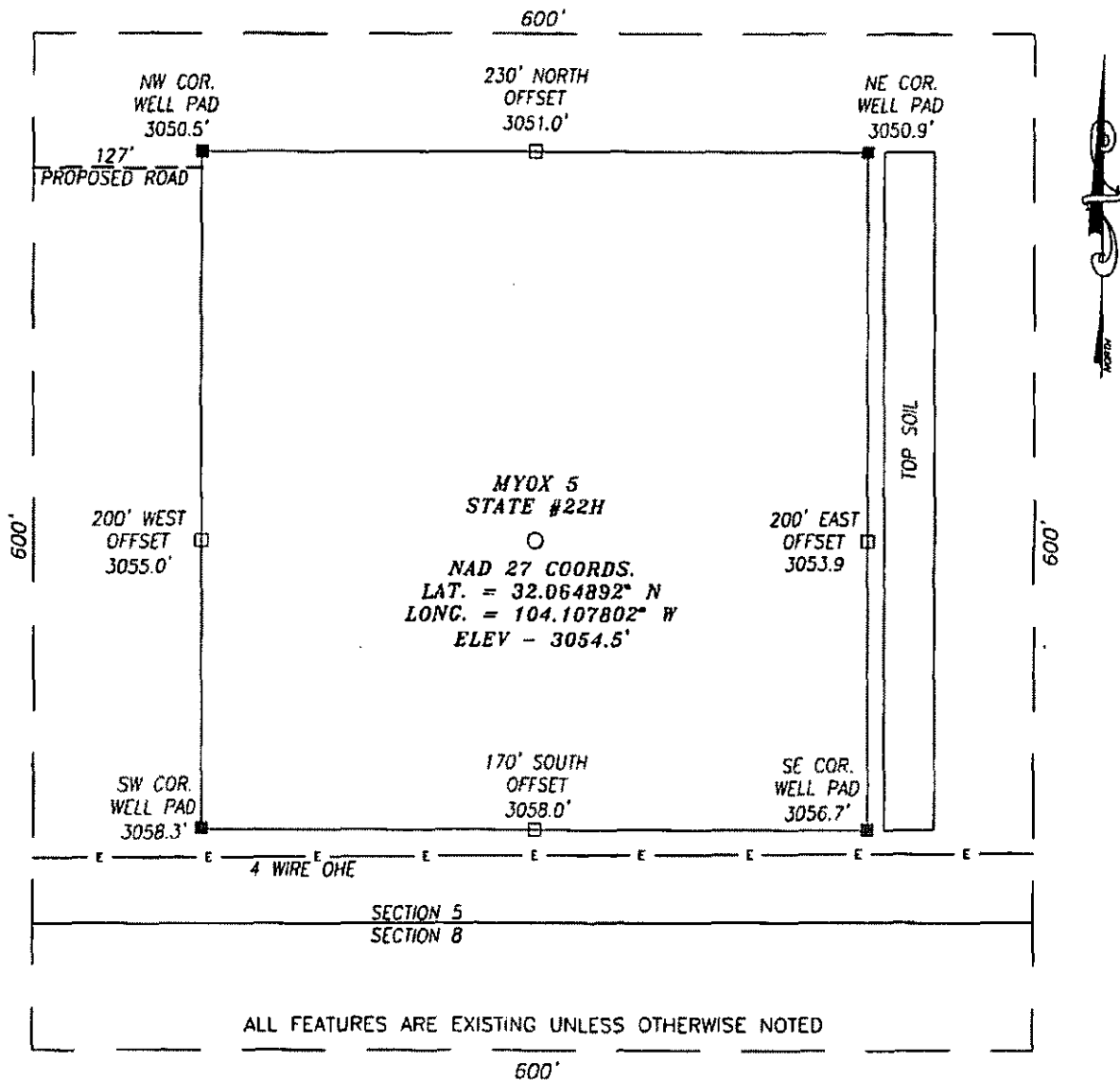
Bottom Hole Location If Different From Surface

UL or lot No.	Section	Township	Range	Lot Idn	Feet from the	North/South line	Feet from the	East/West line	County
B	32	25-S	28-E		330	NORTH	2310	EAST	EDDY
Dedicated Acres 320.63	Joint or Infill	Consolidation Code	Order No.						

NO ALLOWABLE WILL BE ASSIGNED TO THIS COMPLETION UNTIL ALL INTERESTS HAVE BEEN CONSOLIDATED
OR A NON-STANDARD UNIT HAS BEEN APPROVED BY THE DIVISION

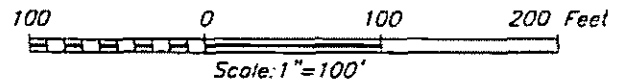
	<p>OPERATOR CERTIFICATION</p> <p>I hereby certify that the information herein is true and complete to the best of my knowledge and belief, and that this organization either owns a working interest or unleased mineral interest in the land including the proposed bottom hole location or has a right to drill this well at this location pursuant to a contract with an owner of such mineral or working interest, or to a voluntary pooling agreement or a compulsory pooling order heretofore entered by the division.</p> <p>Mayte Reyes 4-5-2016 Signature Date</p> <p>Mayte Reyes Printed Name</p> <p>mreyes1@concho.com E-mail Address</p> <p>SURVEYOR CERTIFICATION</p> <p>I hereby certify that the well location shown on this plat was plotted from field notes of actual surveys made by me or under my supervision, and that the same is true and correct to the best of my belief.</p> <p>FEBRUARY 2, 2016 Date of Survey</p> <p>Signature & Seal of Professional Surveyor</p> <p>CHAD L. HARCROW NEW MEXICO 17777 LICENSED PROFESSIONAL SURVEYOR</p> <p>Chad L. Harcrow 2/8/16 Certificate No. CHAD HARCROW 17777 W.O. #16-66 DRAWN BY: AF</p>
---	---

SECTION 5, TOWNSHIP 26 SOUTH, RANGE 28 EAST, N.M.P.M.,
EDDY COUNTY NEW MEXICO



DIRECTIONS TO LOCATION

FROM THE INTERSECTION OF HWY 285 & CR-725 (WHITES CITY RD.) GO WEST FOR APPROX. 2.5 MILES THEN TURN RIGHT (NORTH) AND GO APPROX. 0.1 MILE AND PROPOSED ROAD IS ON THE RIGHT (EAST); THEN PROPOSED WELL IS APPROX. 395 FEET SOUTHEAST.



HARCROW SURVEYING, LLC
2314 W. MAIN ST, ARTESIA, N.M. 88210
PH: (575) 746-2158 FAX: (575) 746-2158
c.harcrow@harcrowsurveying.com



COG OPERATING, LLC

MYOX 5 STATE #22H WELL
LOCATED 225 FEET FROM THE SOUTH LINE
AND 2280 FEET FROM THE EAST LINE OF SECTION 5,
TOWNSHIP 26 SOUTH, RANGE 28 EAST, N.M.P.M.,
EDDY COUNTY, NEW MEXICO

SURVEY DATE: FEB. 2, 2016

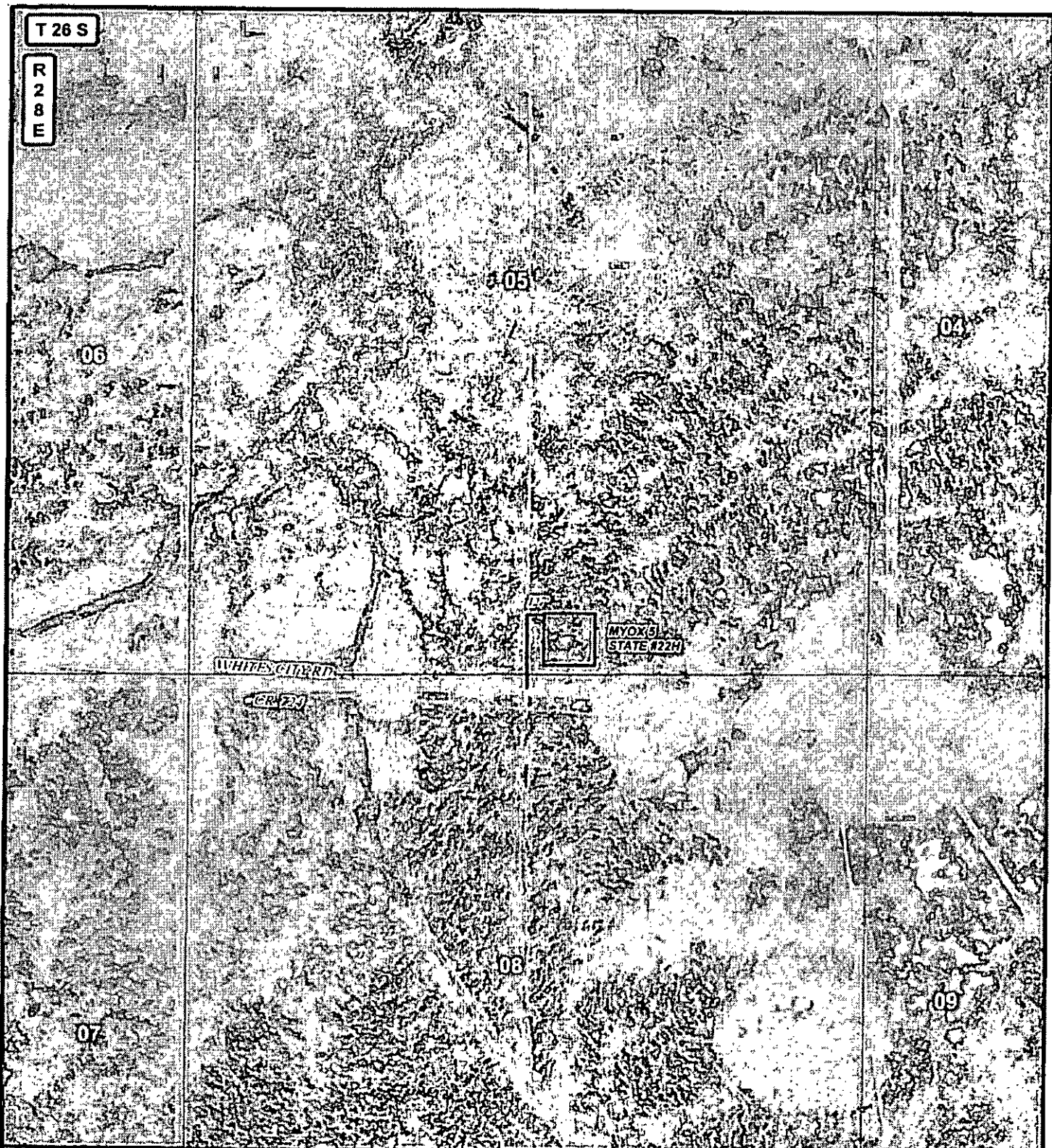
PAGE: 1 OF 1

DRAFTING DATE: FEB. 4, 2016

APPROVED BY: CH

DRAWN BY: AF

FILE: 16-68



T 26 S

R 28 E

06

05

04

WHITE CANYON

MYOX 5
STATE #22H

CR 22

08

07

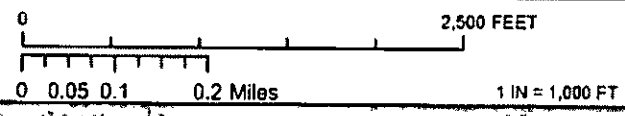
09

LEGEND

- WELL
- WELLPAD
- EXISTING ROAD
- PROPOSED ROAD

MYOX 5 STATE #22H

SEC: 5	TWP: 26 S.	RGE: 28 E.	ELEVATION: 3054.5'
STATE: NEW MEXICO		COUNTY: EDDY	225' FSL & 2280' FEL
W.O. #16-66		LEASE: MYOX 5 ST.	SURVEY: N.M.P.M



LOCATION MAP

IMAGERY

02/04/2016

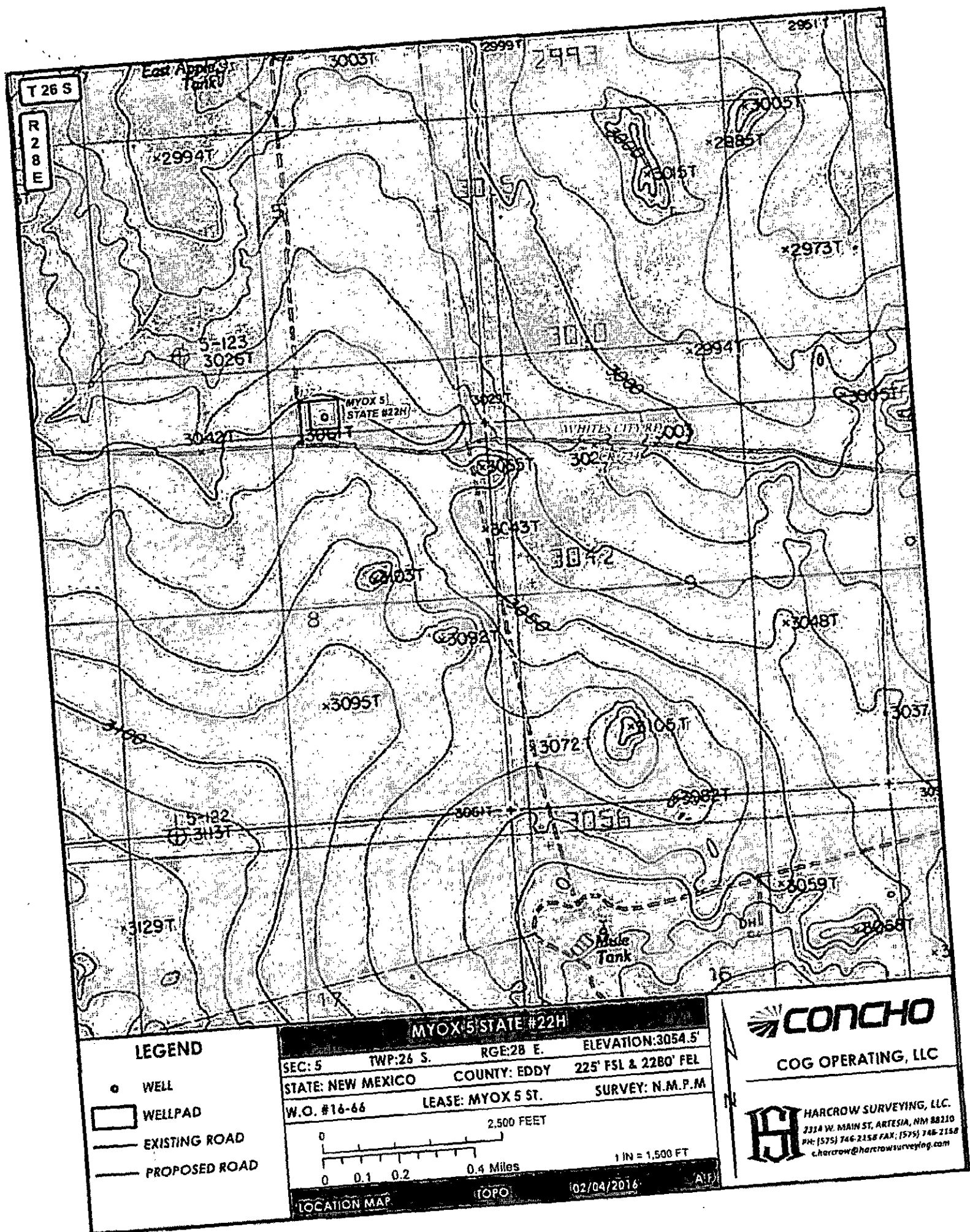
AF

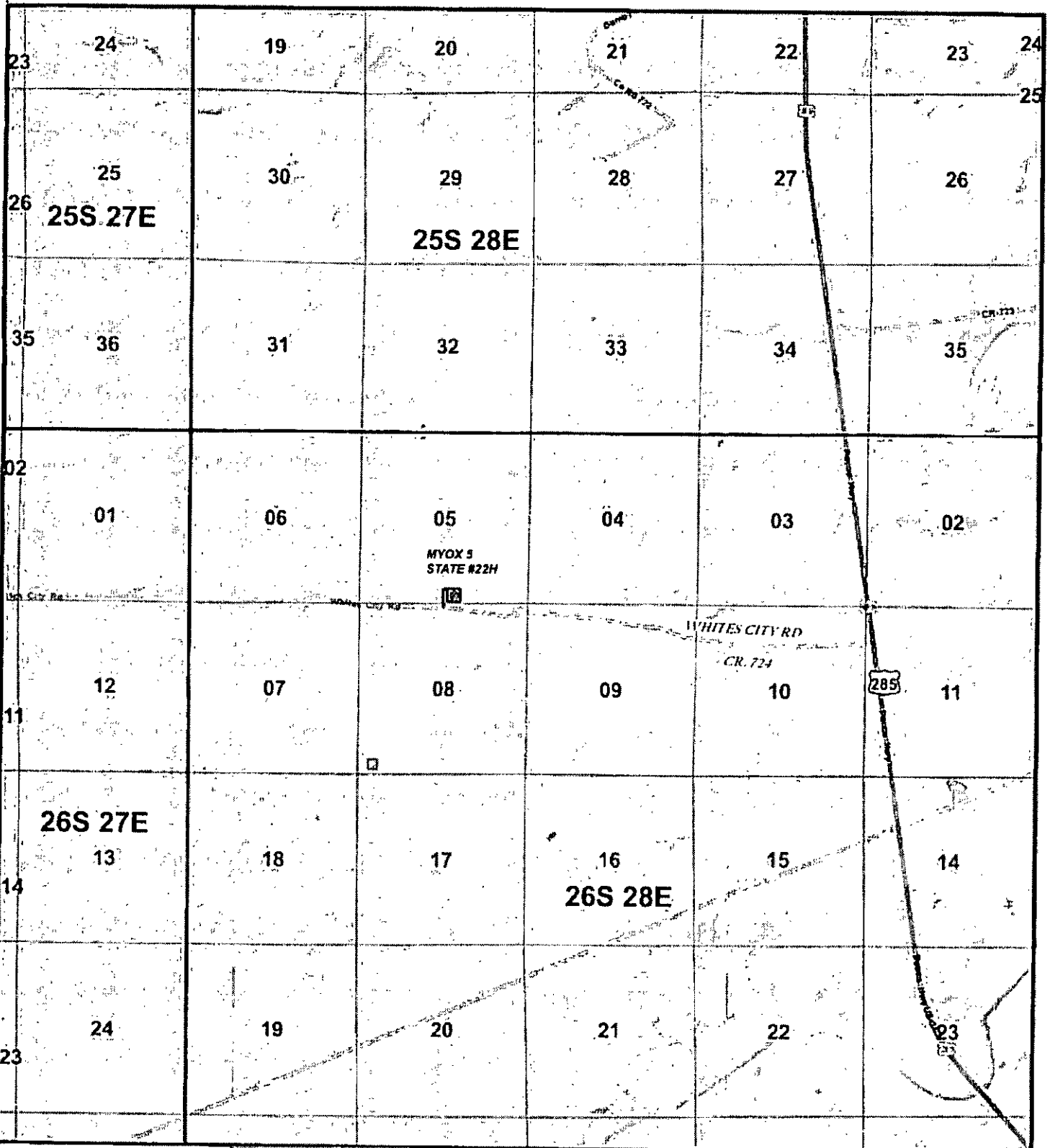


COG OPERATING, LLC



HARCROW SURVEYING, LLC.
 2314 W. MAIN ST, ARTESIA, NM 88210
 PH: (575) 746-2158 FAX: (575) 746-2158
 c.harcrow@harcrowsurveying.com



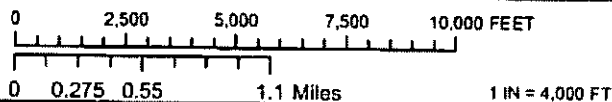


LEGEND

- WELL
- WELLPAD
- EXISTING ROAD
- PROPOSED ROAD

MYOX 5 STATE #22H

SEC: 5 TWP: 26 S. RGE: 28 E. ELEVATION: 3054.5'
 STATE: NEW MEXICO COUNTY: EDDY 225' FSL & 2280' FEL
 W.O. #16-66 LEASE: MYOX 5 ST. SURVEY: N.M.P.M



VICINITY MAP

02/04/2016

A/F



COG OPERATING, LLC



HARCROW SURVEYING, LLC.
 2314 W. MAIN ST. ARTESIA, NM 88210
 PH: (575) 746-2158 FAX: (575) 746-2158
 e.harcrow@harcrowsurveying.com

Myox 05 State #22H

	Hole					
	Size	Casing	Wt	Depth	Cmt	TOC
Surface	17.5	13 3/8	54.5	680'	550	0
Intrmd	12.25	9 5/8	47	8800'	1500	0
Prod	8.5	5.5	20	19128'	3000	2200'

Plan to drill a 17.5" hole to 930' with fresh water. Run 13 3/8", 54.5# J-55 csg and cmt to surface. Drill a 12.25" hole to 8800' with brine/cut brine/diesel-brine emulsion/ prehydrated bentonite mud, and run 9 5/8" 47# L80 and cement to surface in two stages. Drill out, kick off and drill an 8.5" curve and lateral to 19,128' with OBM. Run 5-1/2" 20# P110 production string and cement to surface.

Well Control

Type	Pressure	Test	Manufacture
Double Ram	5000	5000	Cameron

District I

1625 N. French Dr., Hobbs, NM 86240
Phone (575) 393-6161 Fax (575) 393-0720

District II

311 S. First St., Artesia, NM 88213
Phone (575) 749-1293 Fax (575) 749-6720

District III

1000 Rio Brazos Rd., Acton, NM 87410
Phone (505) 334-9178 Fax (505) 334-6170

District IV

1220 S. St Francis Dr., Santa Fe, NM 87505
Phone (505) 476-3470 Fax (505) 476-3462

State of New Mexico
Energy, Minerals and Natural Resources
Oil Conservation Division
1220 S. St Francis Dr.
Santa Fe, NM 87505

Form APD Conditions

PERMIT CONDITIONS OF APPROVAL

Operator Name and Address: <i>COB (229137)</i>		API Number: <i>30-015-40306</i>
		Well: <i>Trujillo 5 State #22 H</i>
OCD Reviewer	Condition	
kjones	Will require a directional survey with the C-104	
kjones	Once the well is spud, to prevent ground water contamination through whole or partial conduits from the surface, the operator shall drill without interruption through the fresh water zone or zones and shall immediately set in cement the water protection string	
kjones	If cement does not circulate to surface, must run temperature survey or other log to determine top of cement	