

UNITED STATES
DEPARTMENT OF THE INTERIOR
BUREAU OF LAND MANAGEMENT

OCD Artesia

FORM APPROVED
OMB NO. 1004-0135
Expires: July 31, 2010

SUNDRY NOTICES AND REPORTS ON WELLS
Do not use this form for proposals to drill or to re-enter an abandoned well. Use form 3160-3 (APD) for such proposals.

SUBMIT IN TRIPLICATE - Other instructions on reverse side.

1. Type of Well <input type="checkbox"/> Oil Well <input checked="" type="checkbox"/> Gas Well <input type="checkbox"/> Other		5. Lease Serial No. NMNM54290
2. Name of Operator RKI EXPLORATION & PROD LLC		6. If Indian, Allottee or Tribe Name
Contact: CHARLES K AHN E-Mail: charles.ahn@wpenergy.com		7. If Unit or CA/Agreement, Name and/or No.
3a. Address 210 PARK AVE SUITE 900 OKLAHOMA CITY, OK 73102	3b. Phone No. (include area code) Ph: 405.996.5771 Fx: 405.996.5772	8. Well Name and No. NORTH BRUSHY DRAW FEDERAL 35 12H
4. Location of Well (Footage, Sec., T., R., M., or Survey Description) Sec 35 T25S R29E SWSE 275FSL 1550FEL		9. API Well No. 30-015-43603-00-X1
		10. Field and Pool, or Exploratory UNDESIGNATED
		11. County or Parish, and State EDDY COUNTY, NM

12. CHECK APPROPRIATE BOX(ES) TO INDICATE NATURE OF NOTICE, REPORT, OR OTHER DATA

TYPE OF SUBMISSION	TYPE OF ACTION			
<input checked="" type="checkbox"/> Notice of Intent	<input type="checkbox"/> Acidize	<input type="checkbox"/> Deepen	<input type="checkbox"/> Production (Start/Resume)	<input type="checkbox"/> Water Shut-Off
<input type="checkbox"/> Subsequent Report	<input type="checkbox"/> Alter Casing	<input type="checkbox"/> Fracture Treat	<input type="checkbox"/> Reclamation	<input type="checkbox"/> Well Integrity
<input type="checkbox"/> Final Abandonment Notice	<input type="checkbox"/> Casing Repair	<input type="checkbox"/> New Construction	<input type="checkbox"/> Recomplete	<input checked="" type="checkbox"/> Other
	<input type="checkbox"/> Change Plans	<input type="checkbox"/> Plug and Abandon	<input type="checkbox"/> Temporarily Abandon	Drilling Operations
	<input type="checkbox"/> Convert to Injection	<input type="checkbox"/> Plug Back	<input type="checkbox"/> Water Disposal	

13. Describe Proposed or Completed Operation (clearly state all pertinent details, including estimated starting date of any proposed work and approximate duration thereof. If the proposal is to deepen directionally or recompleat horizontally, give subsurface locations and measured and true vertical depths of all pertinent markers and zones. Attach the Bond under which the work will be performed or provide the Bond No. on file with BLM/BIA. Required subsequent reports shall be filed within 30 days following completion of the involved operations. If the operation results in a multiple completion or recompleat in a new interval, a Form 3160-4 shall be filed once testing has been completed. Final Abandonment Notices shall be filed only after all requirements, including reclamation, have been completed, and the operator has determined that the site is ready for final inspection.)

RKI Exploration & Production, LLC requests authorization to change the first take point (FTP) to 330 feet FSL/330 feet FEL and bottom hole location (BHL) to 230 feet FNL/330 feet FEL. A revised plat has been attached for reference.

NM OIL CONSERVATION
ARTESIA DISTRICT

MAR 21 2016

Accepted for record
NMOCD

RECEIVED

14. I hereby certify that the foregoing is true and correct.	
Electronic Submission #333396 verified by the BLM Well Information System For RKI EXPLORATION & PROD LLC, sent to the Carlsbad Committed to AFMSS for processing by JAMIE RHOADES on 03/15/2016 (16JLR0327SE)	
Name (Printed/Typed) CHARLES K AHN	Title HS&E/REGULATORY MANAGER
Signature (Electronic Submission)	Date 03/10/2016

THIS SPACE FOR FEDERAL OR STATE OFFICE USE

Approved By	Title	Date
Conditions of approval, if any, are attached. Approval of this notice does not warrant or certify that the applicant holds legal or equitable title to those rights in the subject lease which would entitle the applicant to conduct operations thereon.	Office	

Title 18 U.S.C. Section 1001 and Title 43 U.S.C. Section 1212, make it a crime for any person knowingly and willfully to make, to any department or agency of the United States any false, fictitious or fraudulent statements or representations as to any matter within its jurisdiction.

**** BLM REVISED ** BLM REVISED ** BLM REVISED ** BLM REVISED ** BLM REVISED ****

DISTRICT I
1625 N. French Dr., Hobbs, NM 88240
Phone: (575) 393-6161 Fax: (575) 393-6720

DISTRICT II
811 S. First St., Artesia, NM 88210
Phone: (575) 748-1283 Fax: (505) 334-6170

DISTRICT III
1000 Rio Brazos Rd., Aztec, NM 87410
Phone: (505) 334-6178 Fax: (505) 334-6170

DISTRICT IV
1220 S. St. Francis Dr., Santa Fe, NM 87505
Phone: (505) 476-3460 Fax: (505) 476-3462

State of New Mexico
Energy, Minerals & Natural Resources Department
OIL CONSERVATION DIVISION
1220 South St. Francis Dr.
Santa Fe, New Mexico 87505

Form C-102
Revised August 1, 2011
Submit one copy to appropriate
District Office
☐ AMENDED REPORT

WELL LOCATION AND ACREAGE DEDICATION PLAT

API Number	Pool Code	Pool Name
		UNDESIGNATED WOLFCAMP
Property Code	Property Name	Well Number
	NORTH BRUSHY DRAW FEDERAL 35	12H
OGRID No. 246289	Operator Name RKI EXPLORATION & PRODUCTION	Elevation 3011

Surface Location

UL or lot no.	Section	Township	Range	Lot Idn	Feet from the	North/South line	Feet from the	East/West line	County
O	35	25S	29E		275	S	1550	E	EDDY

Bottom Hole Location If Different From Surface

UL or lot no.	Section	Township	Range	Lot Idn	Feet from the	North/South line	Feet from the	East/West line	County
A	35	25S	29E		230	N	330	E	EDDY
Dedicated Acres 320.0	Joint or Infill	Consolidated Code	Order No.						

No allowable will be assigned to this completion until all interests have been consolidated or a non-standard unit has been approved by the division.

<p>NW COR SEC 35 NMSP-E (NAD 83) N (Y) = 397973.1' E (X) = 655832.1' LAT = 32°05'36.84"N LONG = 103°57'48.98"W NMSP-E (NAD 27) N (Y) = 397915.2' E (X) = 614646.9' LAT = 32.0934437°N LONG = 103.9631234°W</p>	<p>N 1/4 COR SEC 35 NMSP-E (NAD 83) N (Y) = 397980.9' E (X) = 658486.1' LAT = 32°05'36.83"N LONG = 103°57'18.13"W NMSP-E (NAD 27) N (Y) = 397922.9' E (X) = 617300.9' LAT = 32.0934397°N LONG = 103.9545533°W</p>	<p>NORTH BRUSHY DRAW FEDERAL 35 12H BHL NMSP-E (NAD 83) N (Y) = 397757.4' E (X) = 660811.7' LAT = 32°05'34.54"N LONG = 103°56'51.11"W NMSP-E (NAD 27) N (Y) = 397699.4' E (X) = 619626.4' LAT = 32.0928027°N LONG = 103.9470467°W</p> <p>LAST TAKE 330' FNL 330' FEL NMSP-E (NAD 83) N (Y) = 397657.4' E (X) = 660812.1' LAT = 32°05'33.55"N LONG = 103°56'51.11"W NMSP-E (NAD 27) LAT = 32.0925278°N LONG = 103.9470465°W</p> <p>FIRST TAKE 330' FSL 330' FEL NMSP-E (NAD 83) N (Y) = 393009.7' E (X) = 660832.8' LAT = 32°04'47.55"N LONG = 103°56'51.06"W NMSP-E (NAD 27) LAT = 32.0797513°N LONG = 103.9470338°W</p>	<p>NE COR SEC 35 NMSP-E (NAD 83) N (Y) = 397988.3' E (X) = 661140.7' LAT = 32°05'38.81"N LONG = 103°56'47.27"W NMSP-E (NAD 27) N (Y) = 397930.3' E (X) = 619955.5' LAT = 32.0934342°N LONG = 103.9459815°W</p>
<p>W 1/4 COR SEC 35 NMSP-E (NAD 83) N (Y) = 395319.9' E (X) = 655839.7' LAT = 32°05'10.59"N LONG = 103°57'49.00"W NMSP-E (NAD 27) N (Y) = 395261.9' E (X) = 614654.4' LAT = 32.0981500°N LONG = 103.9631285°W</p>		<p>NORTH BRUSHY DRAW FEDERAL 35 12H SHL NMSP-E (NAD 83) N (Y) = 392950.7' E (X) = 659613.0' LAT = 32°04'47.01"N LONG = 103°57'05.24"W</p>	<p>E 1/4 COR SEC 35 NMSP-E (NAD 83) N (Y) = 395334.2' E (X) = 661161.8' LAT = 32°05'10.54"N LONG = 103°56'47.25"W NMSP-E (NAD 27) N (Y) = 395276.3' E (X) = 619966.5' LAT = 32.0861381°N LONG = 103.9459768°W</p>
<p>SW COR SEC 35 NMSP-E (NAD 83) N (Y) = 392663.4' E (X) = 655847.1' LAT = 32°04'44.30"N LONG = 103°57'49.02"W NMSP-E (NAD 27) N (Y) = 392605.5' E (X) = 614661.8' LAT = 32.0788474°N LONG = 103.9631340°W</p>	<p>S 1/4 COR SEC 35 NMSP-E (NAD 83) N (Y) = 392671.8' E (X) = 658512.2' LAT = 32°04'44.29"N LONG = 103°57'18.05"W NMSP-E (NAD 27) N (Y) = 392613.9' E (X) = 617326.8' LAT = 32.0788451°N LONG = 103.9545399°W</p>	<p>NMSP-E (NAD 27) N (Y) = 392892.9' E (X) = 618427.7' LAT = 32.0796012°N LONG = 103.9509726°W</p>	<p>SE COR SEC 35 NMSP-E (NAD 83) N (Y) = 392680.8' E (X) = 661164.3' LAT = 32°04'44.29"N LONG = 103°56'47.22"W NMSP-E (NAD 27) N (Y) = 392623.0' E (X) = 619979.0' LAT = 32.0788440°N LONG = 103.9459672°W</p>

OPERATOR CERTIFICATION

I hereby certify that the information contained herein is true and complete to the best of my knowledge and belief, and that this organization either owns a working interest or unleased mineral interest in the land including the proposed bottom hole location or has a right to drill this well at this location pursuant to a contract with an owner of such a mineral or working interest, or to voluntary pooling agreement or a compulsory pooling order heretofore entered by the division.

Signature _____ Date _____
Print Name _____
E-mail Address _____

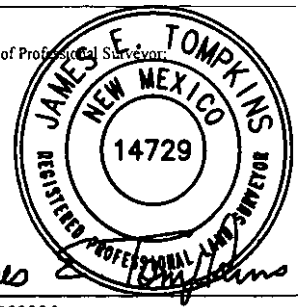
SURVEYORS CERTIFICATION

I hereby certify that the well location shown on this plat was plotted from field notes of actual surveys made by me or under my supervision, and that the same is true and correct to the best of my belief.

MARCH 10, 2016

Date of Survey

Signature and Seal of Professional Surveyor

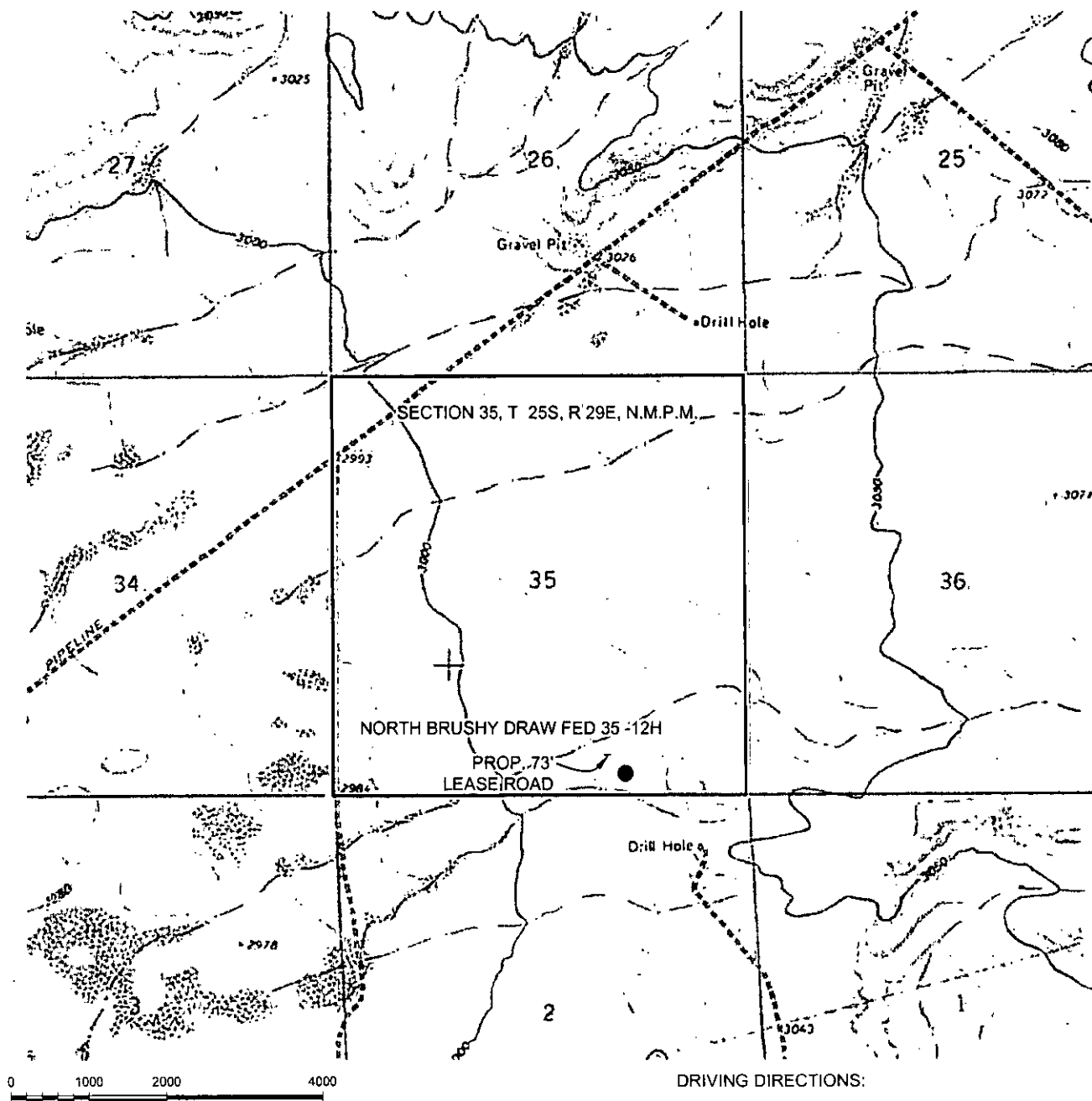


Job No.: WTC50085

JAMES E. TOMPKINS 14729

Certificate Number

LOCATION VERIFICATION MAP



SECTION 35, T 25S, R 29E, N.M.P.M.

COUNTY: EDDY STATE: NM

DESCRIPTION: 275' FSL & 1550' FEL

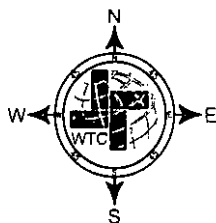
OPERATOR: RKI EXPLORATION & PRODUCTION

WELL NAME: NORTH BRUSHY DRAW
FEDERAL 35-12H



W T C, INC.

405 S.W. 1st Street
Andrews, TX 79714
(432) 523-2181

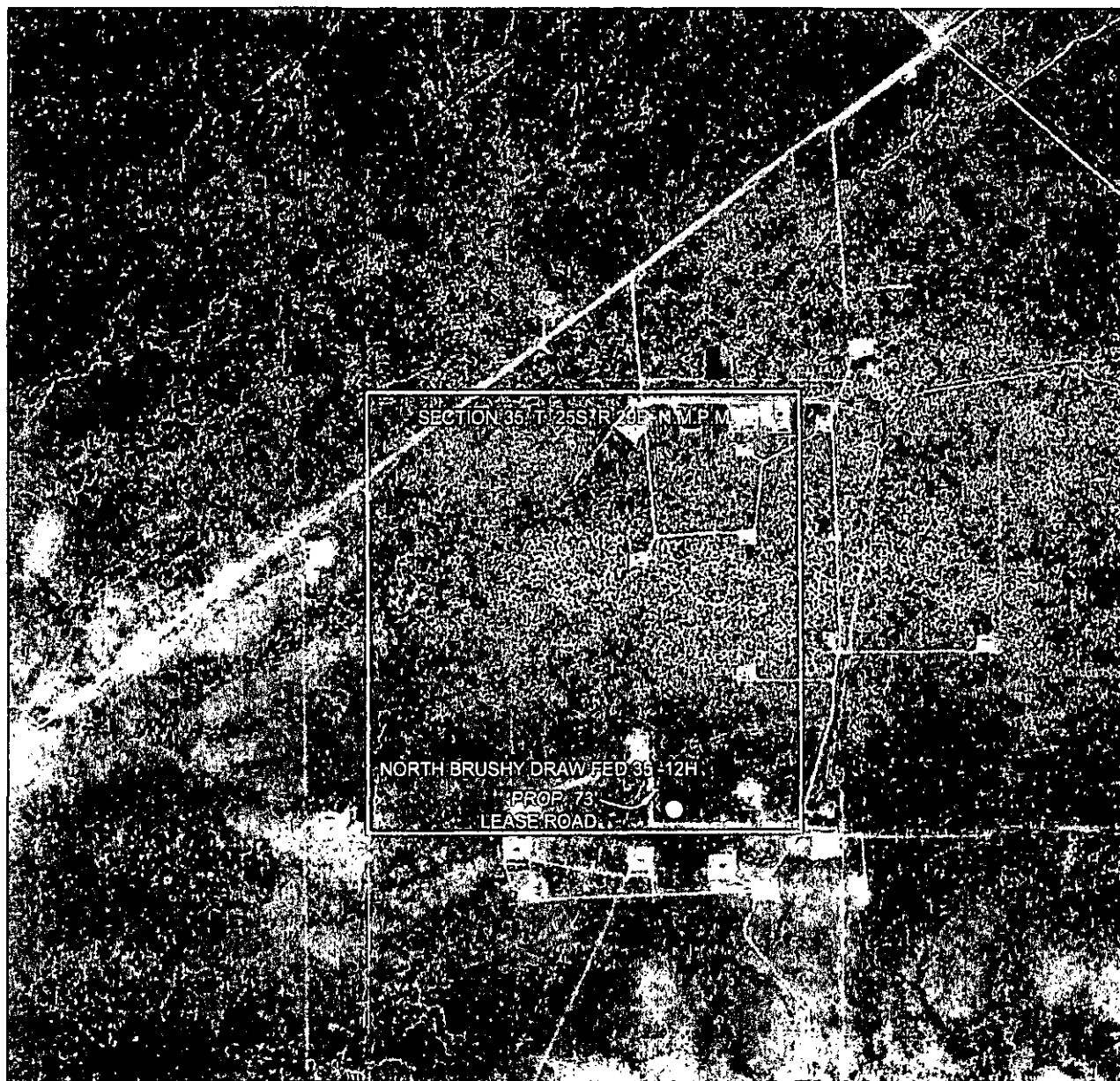


FROM THE INTERSECTION OF STATE HIGHWAY 285 AND LONGHORN COUNTY ROAD 725. GO EAST/ NORTHEAST ON LONGHORN COUNTY ROAD 725 FOR 4.2 MILES TO A LEASE ROAD TURN LEFT. GO EAST ON LEASE ROAD 2.8 MILES TO A LEASE ROAD LEFT. GO 1.3 MILES IN A NORTHERLY DIRECTION TO LEASE ROAD LEFT. GO APPROXIMATELY 0.3 MILE WEST. LOCATION FLAG IS 180 FEET NORTH.



JOB No.: WTC50085

AERIAL MAP



0 1000 2000 4000

GRAPHIC SCALE 1" = 2000'

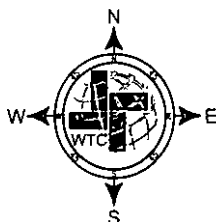
SECTION 35, T. 25S, R. 29E, N.M.P.M.

COUNTY: EDDY STATE: NM

DESCRIPTION: 275' FSL & 1550' FEL

OPERATOR: RKI EXPLORATION & PRODUCTION

WELL NAME: NORTH BRUSHY DRAW
FEDERAL 35-12H



DRIVING DIRECTIONS:

FROM THE INTERSECTION OF STATE HIGHWAY 285 AND LONGHORN COUNTY ROAD 725. GO EAST/NORTHEAST ON LONGHORN COUNTY ROAD 725 FOR 4.2 MILES TO A LEASE ROAD TURN LEFT. GO EAST ON LEASE ROAD 2.8 MILES TO A LEASE ROAD LEFT. GO 1.3 MILES IN A NORTHERLY DIRECTION TO LEASE ROAD LEFT. GO APPROXIMATELY 0.3 MILE WEST. LOCATION FLAG IS 180 FEET NORTH.

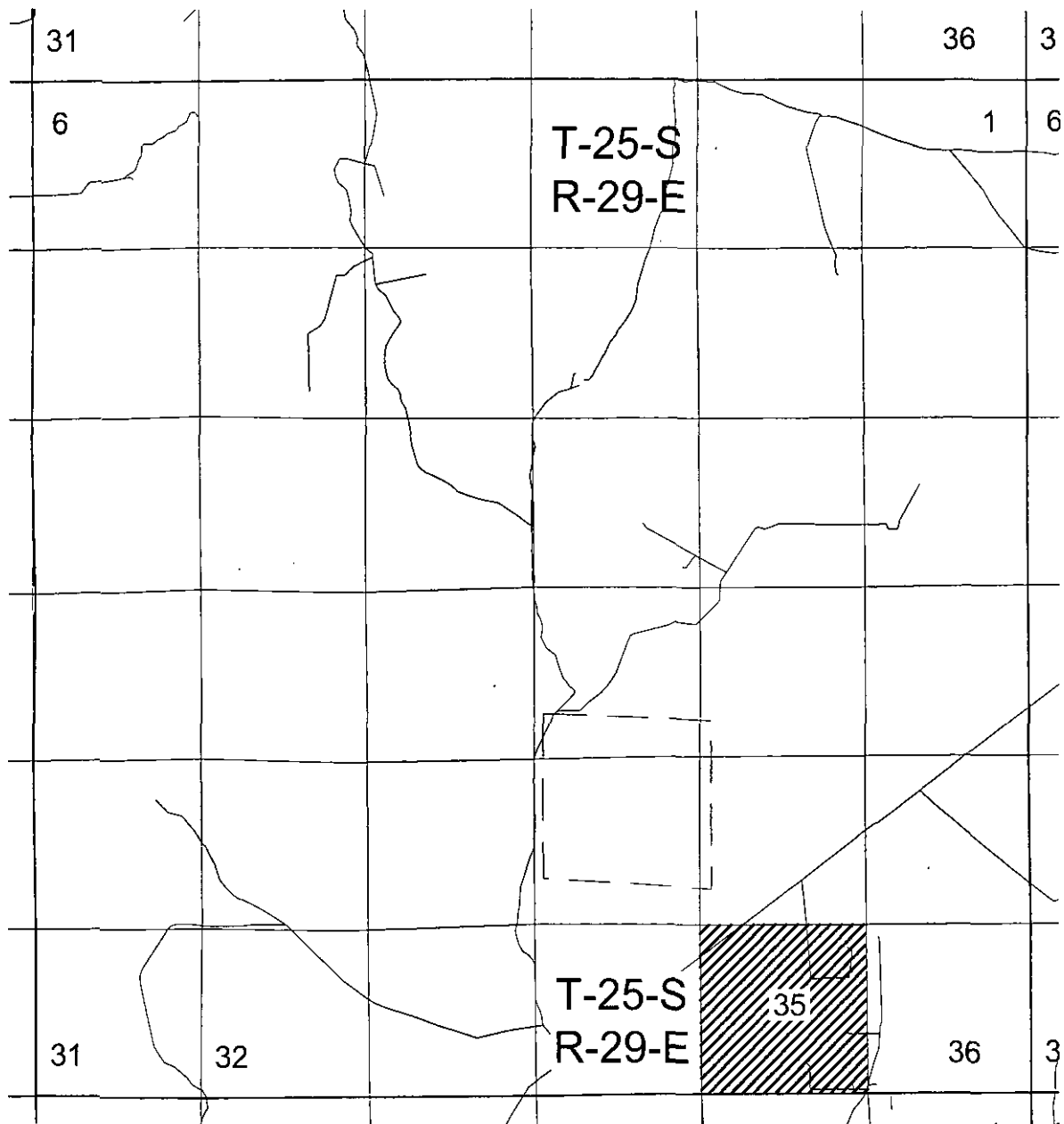


W T C, INC.
405 S.W. 1st Street
Andrews, TX 79714
(432) 523-2181



JOB No.: WTC50085

VICINITY MAP



GRAPHIC SCALE 1" = 1 MILE

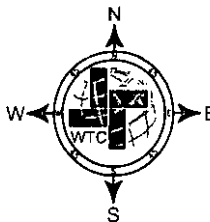
SECTION 35, T 25S, R 29E, N.M.P.M.

COUNTY: EDDY STATE: NM

DESCRIPTION: 275' FSL & 1550' FEL

OPERATOR: RKI EXPLORATION & PRODUCTION

WELL NAME: NORTH BRUSHY DRAW
FEDERAL 35-12H



DRIVING DIRECTIONS:

FROM THE INTERSECTION OF STATE HIGHWAY 285 AND LONGHORN COUNTY ROAD 725. GO EAST/ NORTHEAST ON LONGHORN COUNTY ROAD 725 FOR 4.2 MILES TO A LEASE ROAD TURN LEFT. GO EAST ON LEASE ROAD 2.8 MILES TO A LEASE ROAD LEFT. GO 1.3 MILES IN A NORTHERLY DIRECTION TO LEASE ROAD LEFT. GO APPROXIMATELY 0.3 MILE WEST. LOCATION FLAG IS 180 FEET NORTH.

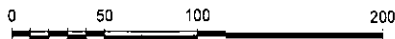
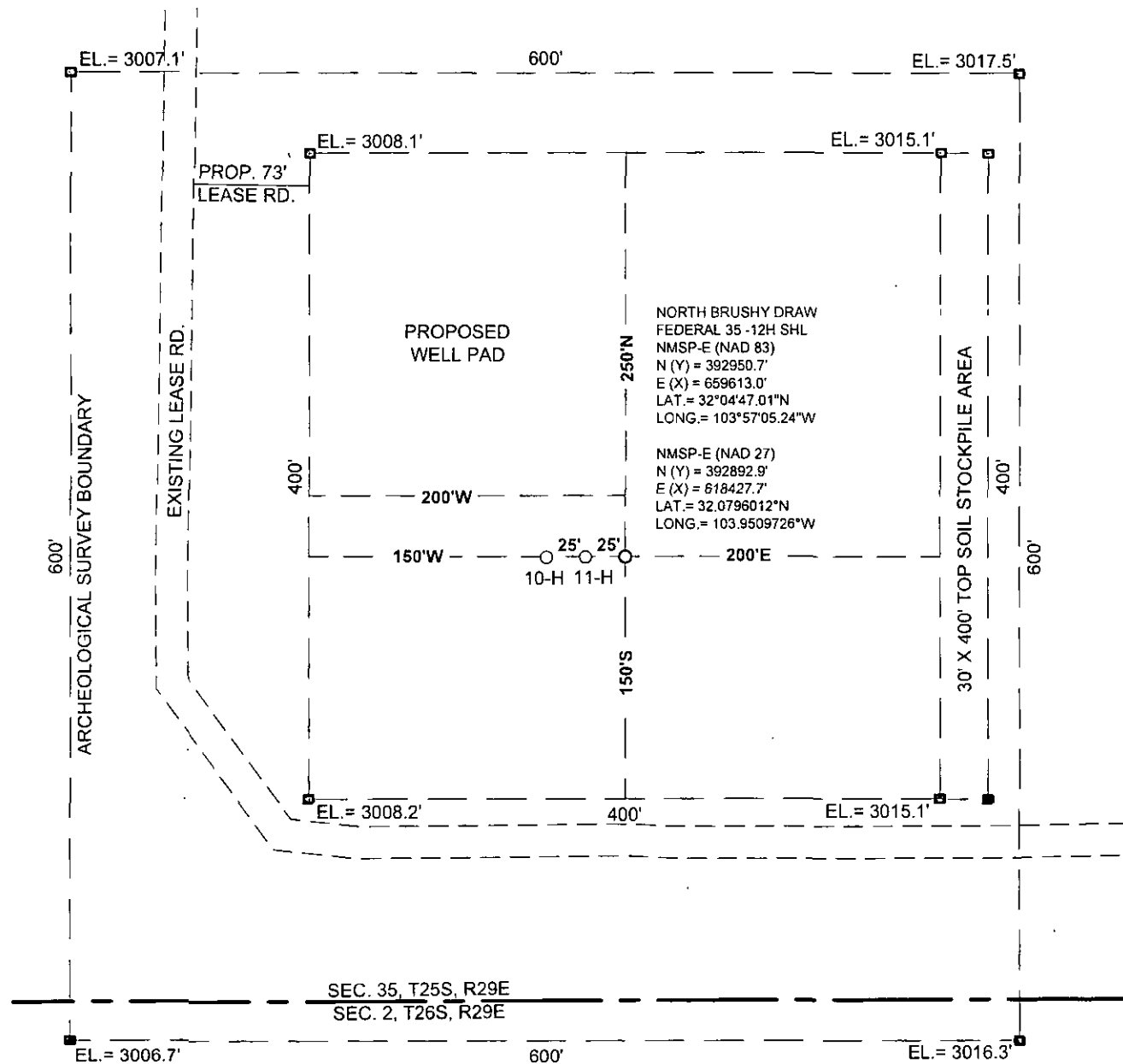


W T C, INC.
405 S W 1st Street
Andrews, TX 79714
(432) 523-2181



JOB No.: WTC50085

SITE LOCATION



GRAPHIC SCALE 1" = 100'

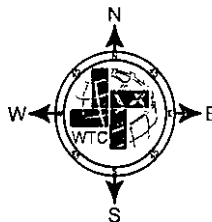
SECTION 35, T 25S, R 29E, N.M.P.M.

COUNTY: EDDY STATE: NM

DESCRIPTION: 275' FSL & 1550' FEL

OPERATOR: RKI EXPLORATION & PRODUCTION

WELL NAME: NORTH BRUSHY DRAW
FEDERAL 35-12H

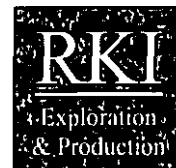


DRIVING DIRECTIONS:

FROM THE INTERSECTION OF STATE HIGHWAY 285 AND LONGHORN COUNTY ROAD 725. GO EAST/ NORTHEAST ON LONGHORN COUNTY ROAD 725 FOR 4.2 MILES TO A LEASE ROAD TURN LEFT. GO EAST ON LEASE ROAD 2.8 MILES TO A LEASE ROAD LEFT. GO 1.3 MILES IN A NORTHERLY DIRECTION TO LEASE ROAD LEFT. GO APPROXIMATELY 0.3 MILE WEST. LOCATION FLAG IS 180 FEET NORTH.

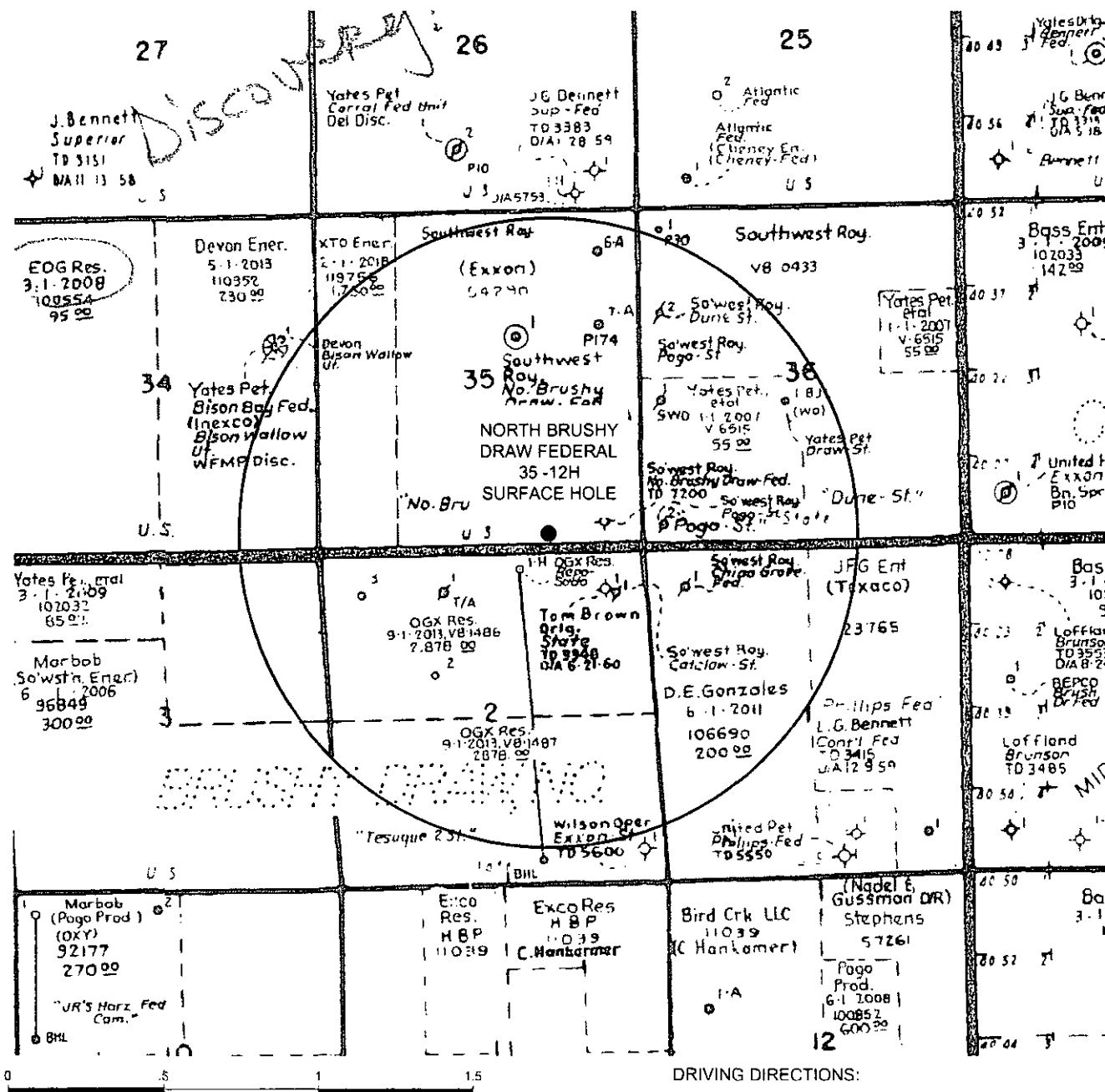


W T C, INC.
405 S.W. 1st Street
Andrews, TX 79714
(432) 523-2181



JOB No.: WTC50085

SURFACE HOLE LOCATION



WTC, INC.
405 S.W. 1st Street
Andrus, TX 79714
(432) 523-2181

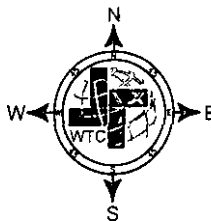


JOB No.: WTC50085

Draw of 22
2
38 2-SWD



FROM THE INTERSECTION OF STATE HIGHWAY 285 AND LONGHORN COUNTY ROAD 725. GO EAST/ NORTHEAST ON LONGHORN COUNTY ROAD 725 FOR 4.2 MILES TO A LEASE ROAD TURN LEFT. GO EAST ON LEASE ROAD 2.8 MILES TO A LEASE ROAD LEFT. GO 1.3 MILES IN A NORTHERLY DIRECTION TO LEASE ROAD LEFT. GO APPROXIMATELY 0.3 MILE WEST. LOCATION FLAG IS 180 FEET NORTH.



W T C, INC.
405 S.W. 1st Street
Andrews, TX 79714
(432) 523-2181



JOB No.: WTC50085