

NM OIL CONSERVATION

ARTESIA DISTRICT

DISTRICT I
1625 N. French Dr., Hobbs, NM 88240
Phone: (575) 393-6161 Fax: (575) 393-0720
DISTRICT II
811 S. First St., Artesia, NM 88210
Phone: (575) 748 1283 Fax: (575) 748-9720
DISTRICT III
1000 Rio Grande Rd., Alamo, NM 87410
Phone: (505) 334-6178 Fax: (505) 334-6170
DISTRICT IV
1220 S. St. Francis Dr., Santa Fe, NM 87505
Phone: (505) 476-3460 Fax: (505) 476-3462

State of New Mexico
Energy, Minerals & Natural Resources Department
OIL CONSERVATION DIVISION
1220 South St. Francis Dr.
Santa Fe, New Mexico 87505

APR 28 2016

Form C-102

Revised August 1, 2011

Submit one copy to appropriate District Office

RECEIVED

☐ AMENDED REPORT

WELL LOCATION AND ACREAGE DEDICATION PLAT

API Number 30-015-43634	Pool Code 97136 /	Pool Name BRUSHY DRAW; WOLFCAMP
Property Code 313813 /	Property Name RDX FEDERAL COM 17	Well Number 40H
OGRID No. 246289 /	Operator Name RKI EXPLORATION & PRODUCTION	Elevation 3086'

Surface Location

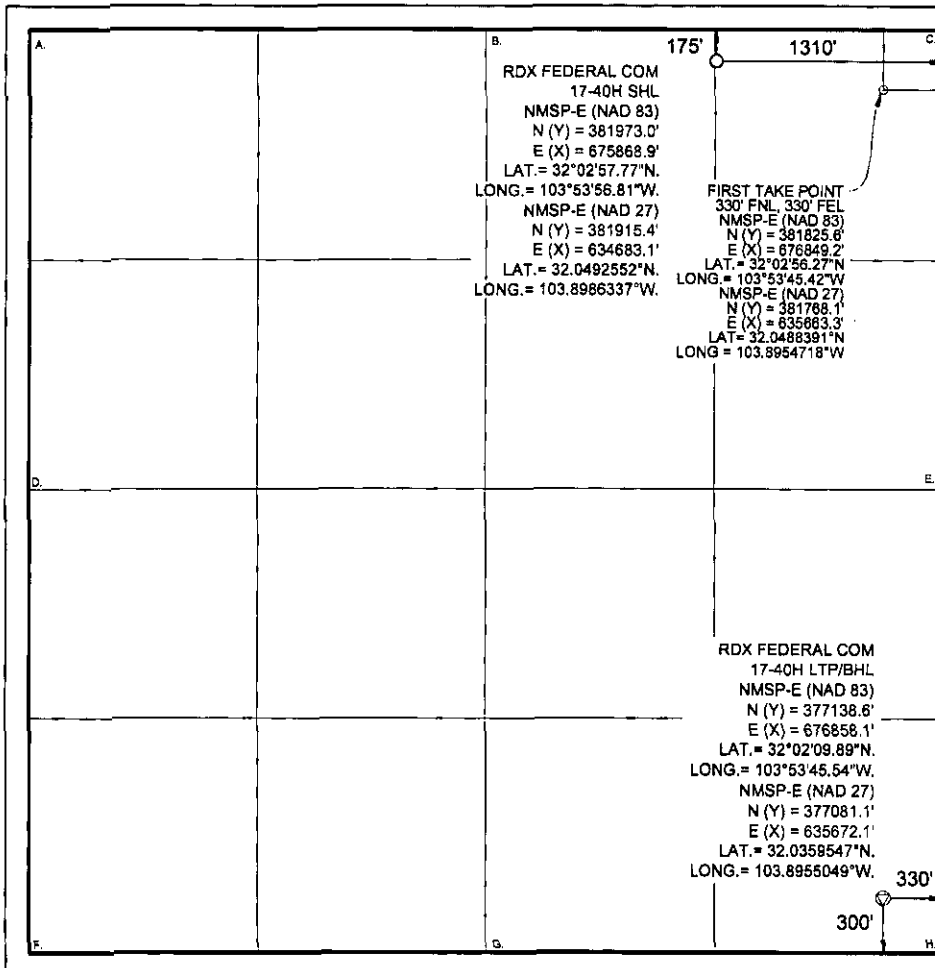
UL or lot no.	Section	Township	Range	Lot Idn	Feet from the	North/South line	Feet from the	East/West line	County
A	17	26 S	30 E		175	NORTH	1310	EAST	EDDY

Bottom Hole Location If Different From Surface

UL or lot no.	Section	Township	Range	Lot Idn	Feet from the	North/South line	Feet from the	East/West line	County
P	17	26 S	30 E		300	SOUTH	330'	EAST	EDDY

Dedicated Acres	Joint or Infill	Consolidated Code	Order No.
160.0			

No allowable will be assigned to this completion until all interests have been consolidated or a non-standard unit has been approved by the division.



OPERATOR CERTIFICATION

I hereby certify that the information contained herein is true and complete to the best of my knowledge and belief, and that this organization either owns a working interest or unleased mineral interest in the land including the proposed bottom hole location or has a right to drill this well at this location pursuant to a contract with an owner of such a mineral or working interest, or to voluntary pooling agreement or a compulsory pooling order heretofore entered by the division.

Signature: *Heather Brehm* Date: 4.14.2016

Print Name: Heather Brehm

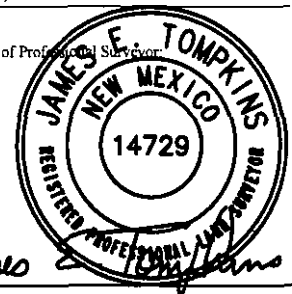
E-mail Address: heather.brehm@wpenergy.com

SURVEYORS CERTIFICATION

I hereby certify that the well location shown on this plat was plotted from field notes of actual surveys made by me or under my supervision, and that the same is true and correct to the best of my belief.

Date of Survey: September 11, 2014

Signature and Seal of Professional Surveyor:

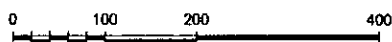


Job No.: WTC50087

Certificate Number: JAMES E. TOMPKINS 14729

SECTION COORDINATES

<p>A. NW COR SEC 17 NMSP-E (NAD 83) Y = 382117.4' N X = 671870.2' E LAT.: 32°02'59.35" N LONG.: 103°54'43.26" W NMSP-E (NAD 27) N (Y) = 382059.8' E (X) = 630684.4' LAT = 32.0496956°N LONG = 103.9115374°W</p>	<p>B. N1/4 COR SEC 17 NMSP-E (NAD 83) Y = 382137.7' N X = 674525.3' E LAT.: 32°02'59.45" N LONG.: 103°54'12.41" W NMSP-E (NAD 27) N (Y) = 382080.1' E (X) = 633339.5' LAT = 32.0497225°N LONG = 103.9029680°W</p>	<p>C. NE COR SEC 17 NMSP-E (NAD 83) Y = 382158.2' N X = 677178.6' E LAT.: 32°02'59.55" N LONG.: 103°53'41.58" W NMSP-E (NAD 27) N (Y) = 382100.6' E (X) = 635992.7' LAT = 32.0497496°N LONG = 103.8944044°</p>
<p>D. W1/4 CORNER SEC 17 NMSP-E (NAD 83) Y = 379460.3' N E = 671877.8' E LAT.: 32°02'33.06" N LONG.: 103°54'43.30" W NMSP-E (NAD 27) N (Y) = 379402.8' E (X) = 630691.9' LAT = 32.0423914°N LONG = 103.9115468°W</p>		<p>E. E1/4 COR SEC 17 NMSP-E (NAD 83) Y = 379499.9' N E = 677183.8' E LAT.: 32°02'33.24" N LONG.: 103°53'41.65" W NMSP-E (NAD 27) N (Y) = 379442.4' E (X) = 635997.85' LAT = 32.0424420°N LONG = 103.8944427°W</p>
<p>F. SW COR SEC 17 NMSP-E (NAD 83) Y = 376803.1' N E = 671884.0' E LAT.: 32°02'06.76" N LONG.: 103°54'43.34" W NMSP-E (NAD 27) N (Y) = 376745.6' E (X) = 630698.0' LAT = 32.0350888°N LONG = 103.9115606°W</p>	<p>G. S1/4 COR SEC 17 NMSP-E (NAD83) Y = 376822.4' N E = 674535.2' E LAT.: 32°02'06.85" N LONG.: 103°54'12.54" W NMSP-E (NAD 27) N (Y) = 376764.9' E (X) = 633349.2' LAT = 32.0351112°N LONG = 103.9030048°W</p>	<p>H. SE COR SEC 17 NMSP-E (NAD 83) Y = 376840.9' N X = 677188.7' E LAT.: 32°02'06.93" N LONG.: 103°53'41.72" W NMSP-E (NAD 27) N (Y) = 376783.4' E (X) = 636002.6' LAT = 32.0351326°N LONG = 103.8944421°W</p>



GRAPHIC SCALE 1" = 200'

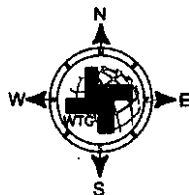
SECTION 17, T 26 S, R 30 E, N.M.P.M.

COUNTY: EDDY STATE: NM

DESCRIPTION: 175' FNL & 1310' FEL

OPERATOR: RKI EXPLORATION & PRODUCTION

WELL NAME: RDX FEDERAL COM 17-40H



DRIVING DIRECTIONS:

Beginning at US 285 at the Texas-New Mexico State line go Northerly 3.7 miles to CR 725 (Longhorn Road). On CR 725 go East, South & Southeast for approx. 4.1 miles to a "Y". Take the left fork going East on Ross Ln. for approx. 6.1 miles to a lease road right, Go South on lease road for approx. 1.9 miles to a two track road. Go South on lease road for approx. 1.9 miles to a two track road. Go southerly on two track road for 1.6 miles. The location flag is 75 feet East.

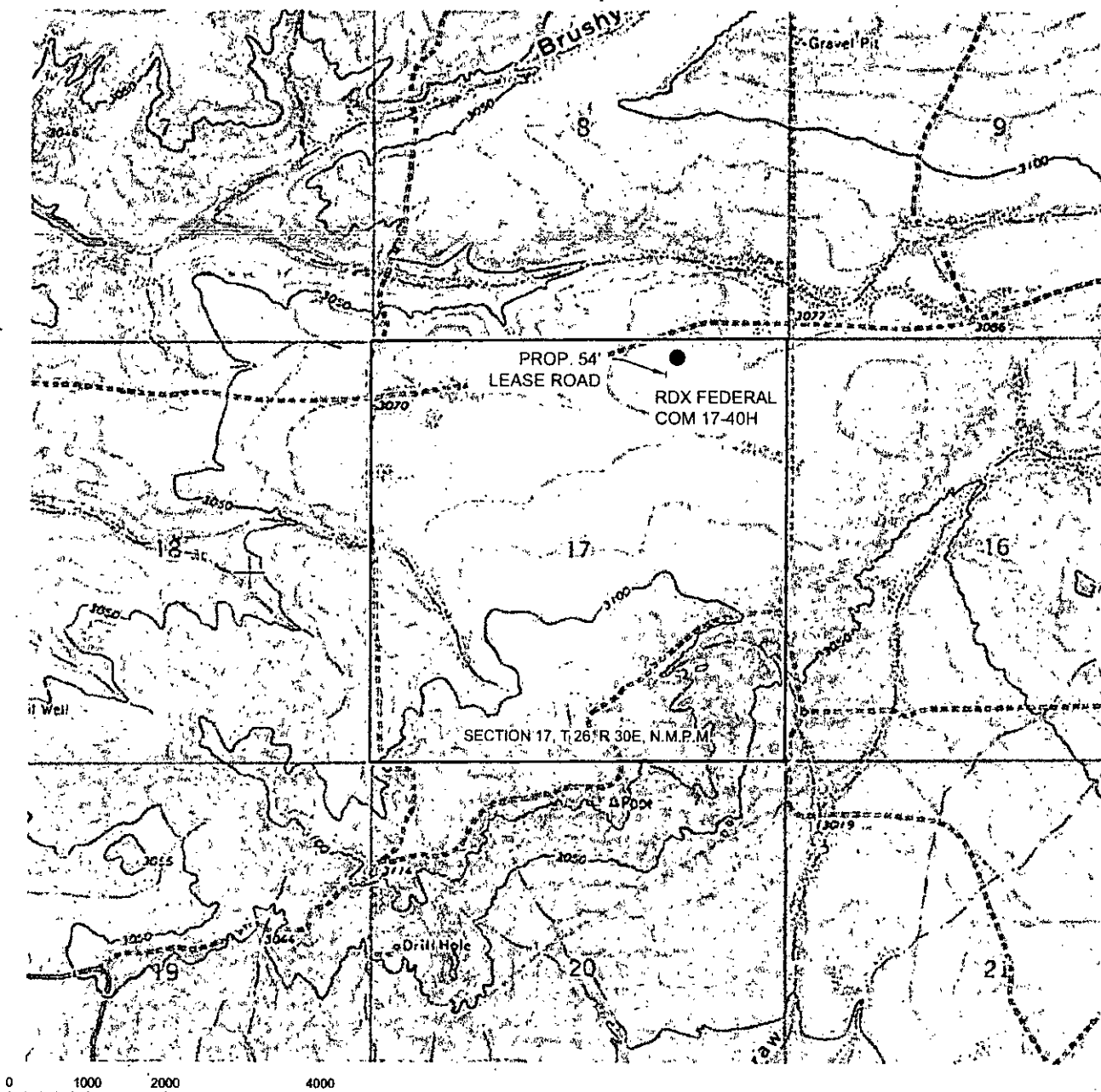


WTC, INC.
405 S.W. 1st Street
Andrews, TX 79714
(432) 523-2181

RKI EXPLORATION & PRODUCTION

JOB No.: WTC50087

LOCATION VERIFICATION MAP



GRAPHIC SCALE 1" = 2000'

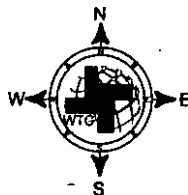
SECTION 17, T 26 S, R 30 E, N.M.P.M.

COUNTY: EDDY STATE: NM

DESCRIPTION: 175' FNL & 1310' FEL

OPERATOR: RKI EXPLORATION & PRODUCTION

WELL NAME: RDX FEDERAL COM 17-40H



DRIVING DIRECTIONS:

Beginning at US 285 at the Texas-New Mexico State line go Northerly 3.7 miles to CR 725 (Longhorn Road). On CR 725 go East, South & Southeast for approx. 4.1 miles to a "Y". Take the left fork going East on Ross Ln. for approx. 6.1 miles to a lease road right, Go South on lease road for approx. 1.9 miles to a two track road. Go South on lease road for approx. 1.9 miles to a two track road. Go southerly on two track road for 1.6 miles. The location flag is 75 feet East.

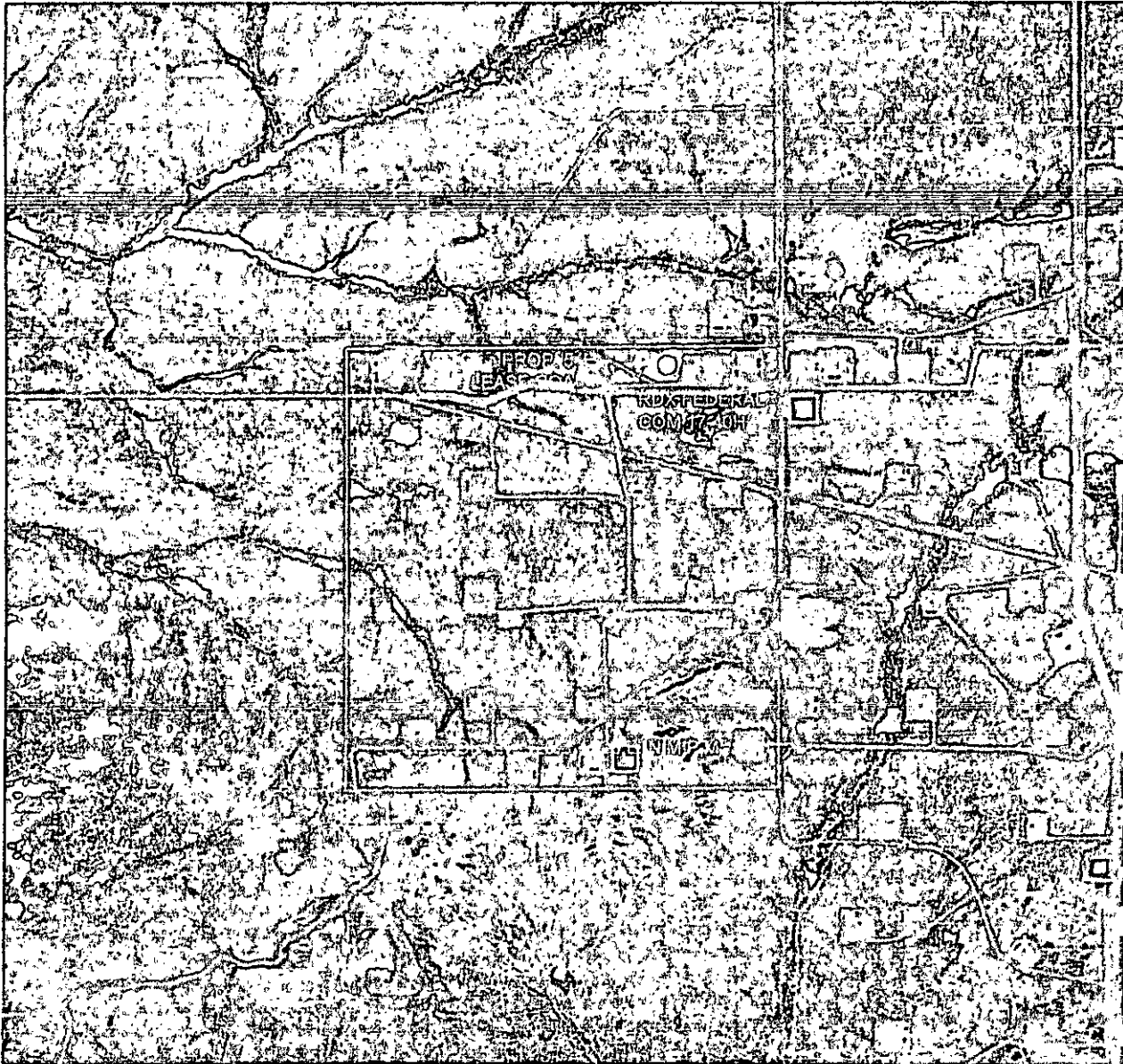


WTC, INC.
405 S.W. 1st Street
Andres, TX 79714
(432) 523-2181

RKI EXPLORATION & PRODUCTION

JOB No.: WTC50087

AERIAL MAP



0 1000 2000 4000

GRAPHIC SCALE 1" = 2000'

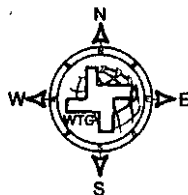
SECTION 17, T 26 S, R 30 E, N.M.P.M.

COUNTY: EDDY STATE: NM

DESCRIPTION: 175' FNL & 1310' FEL

OPERATOR: RKI EXPLORATION & PRODUCTION

WELL NAME: RDX FEDERAL COM 17-40H



DRIVING DIRECTIONS:

Beginning at US 285 at the Texas-New Mexico State line go Northerly 3.7 miles to CR 725 (Longhorn Road). On CR 725 go East, South & Southeast for approx. 4.1 miles to a "Y". Take the left fork going East on Ross Ln. for approx. 6.1 miles to a lease road right, Go South on lease road for approx. 1.9 miles to a two track road. Go South on lease road for approx. 1.9 miles to a two track road. Go southerly on two track road for 1.6 miles. The location flag is 75 feet East.



WTC, INC.

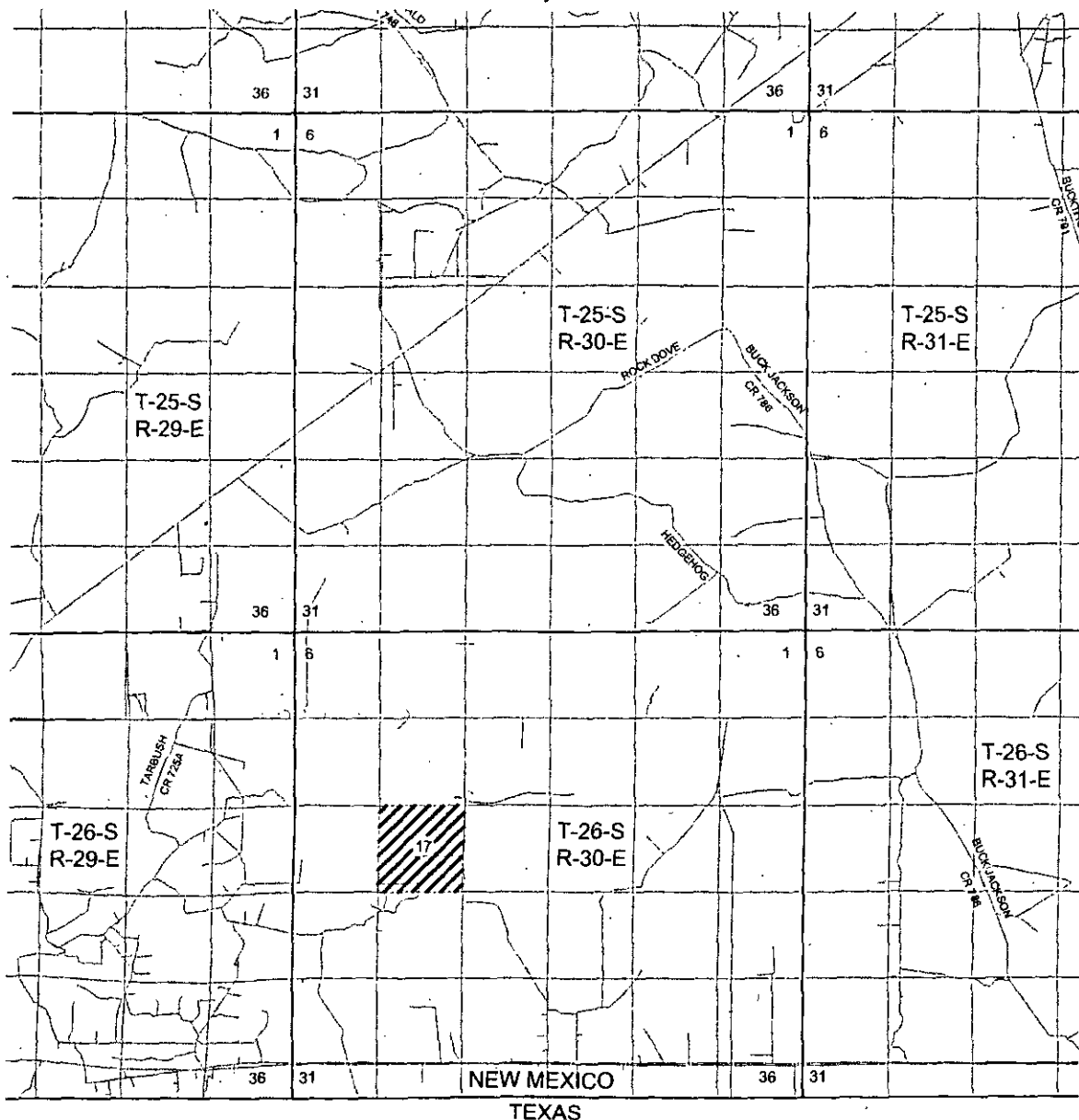
405 S.W. 1st Street
Anders, TX 79714
(432) 523-2181

RKI EXPLORATION & PRODUCTION

JOB No.: WTC50087

© WTC, INC. All Rights Reserved. This document is the property of WTC, INC. and is not to be distributed outside of WTC, INC. without prior written permission. WTC, INC. is not responsible for any errors or omissions in this document.

VICINITY MAP



GRAPHIC SCALE 1" = 2 MILES

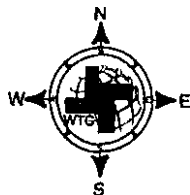
SECTION 17, T 26 S, R 30 E, N.M.P.M.

COUNTY: EDDY STATE: NM

DESCRIPTION: 175' FNL & 1310' FEL

OPERATOR: RKI EXPLORATION & PRODUCTION

WELL NAME: RDX FEDERAL COM 17-40H



DRIVING DIRECTIONS:

Beginning at US 285 at the Texas-New Mexico State line go Northwesterly 3.7 miles to CR 725 (Longhorn Road). On CR 725 go East, South & Southeast for approx. 4.1 miles to a "Y". Take the left fork going East on Ross Ln. for approx. 6.1 miles to a lease road right, Go South on lease road for approx. 1.9 miles to a two track road. Go South on lease road for approx. 1.9 miles to a two track road. Go southerly on two track road for 1.6 miles. The location flag is 75 feet East.

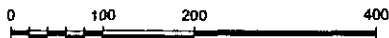
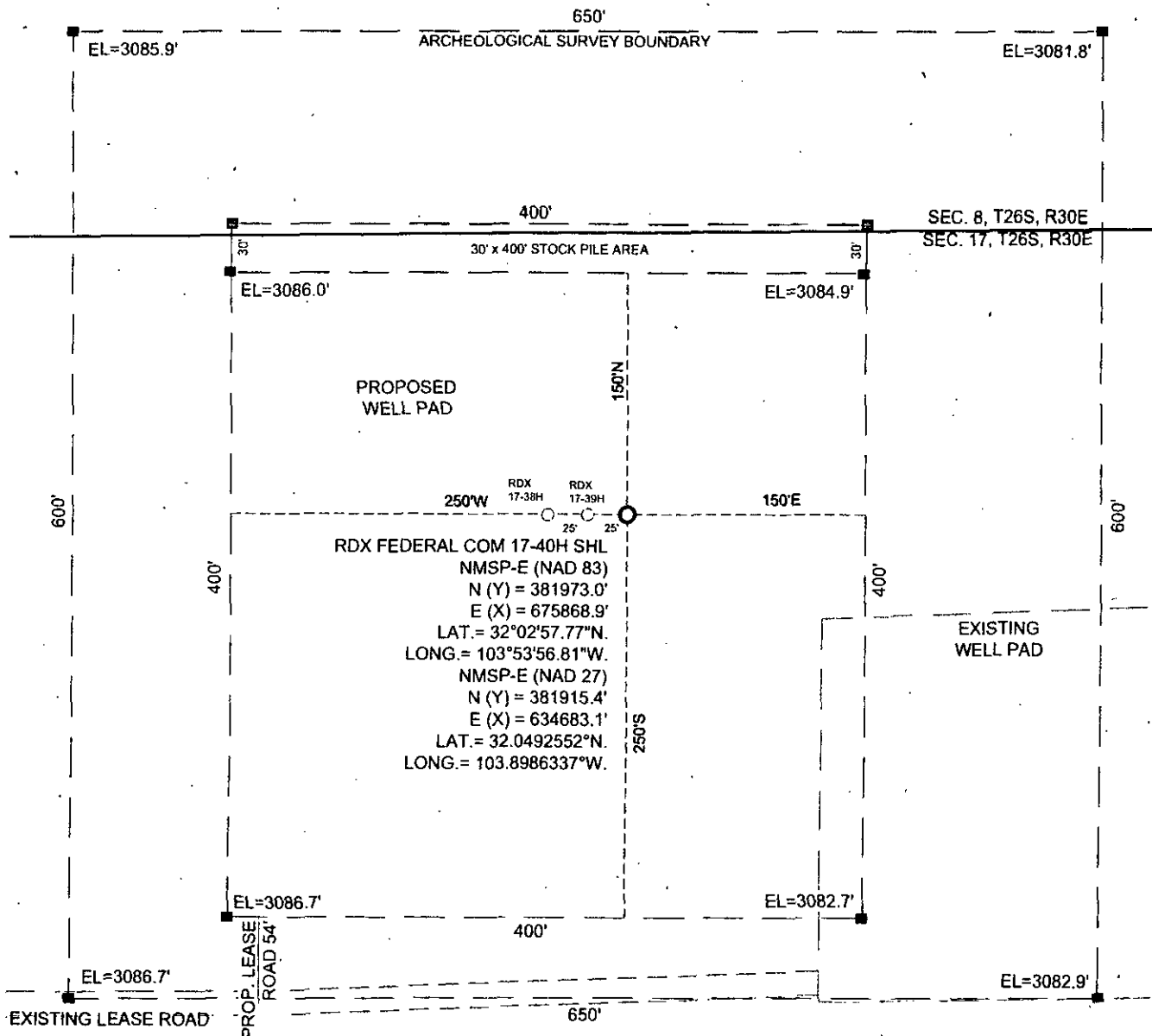


WTC, INC.
405 S.W. 1st Street
Andrews, TX 79714
(432) 523-2181

RKI EXPLORATION & PRODUCTION

JOB No.: WTC50087

SITE LOCATION



GRAPHIC SCALE 1" = 200'

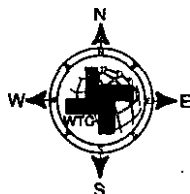
SECTION 17, T 26 S, R 30 E, N.M.P.M.

COUNTY: EDDY STATE: NM

DESCRIPTION: 175' FNL & 1310' FEL

OPERATOR: RKI EXPLORATION & PRODUCTION

WELL NAME: RDX FEDERAL COM 17-40H



DRIVING DIRECTIONS:

Beginning at US 285 at the Texas-New Mexico State line go Northerly 3.7 miles to CR 725 (Longhorn Road). On CR 725 go East, South & Southeast for approx. 4.1 miles to a "Y". Take the left fork going East on Ross Ln. for approx. 6.1 miles to a lease road right, Go South on lease road for approx. 1.9 miles to a two track road. Go South on lease road for approx. 1.9 miles to a two track road. Go southerly on two track road for 1.6 miles. The location flag is 75 feet East.

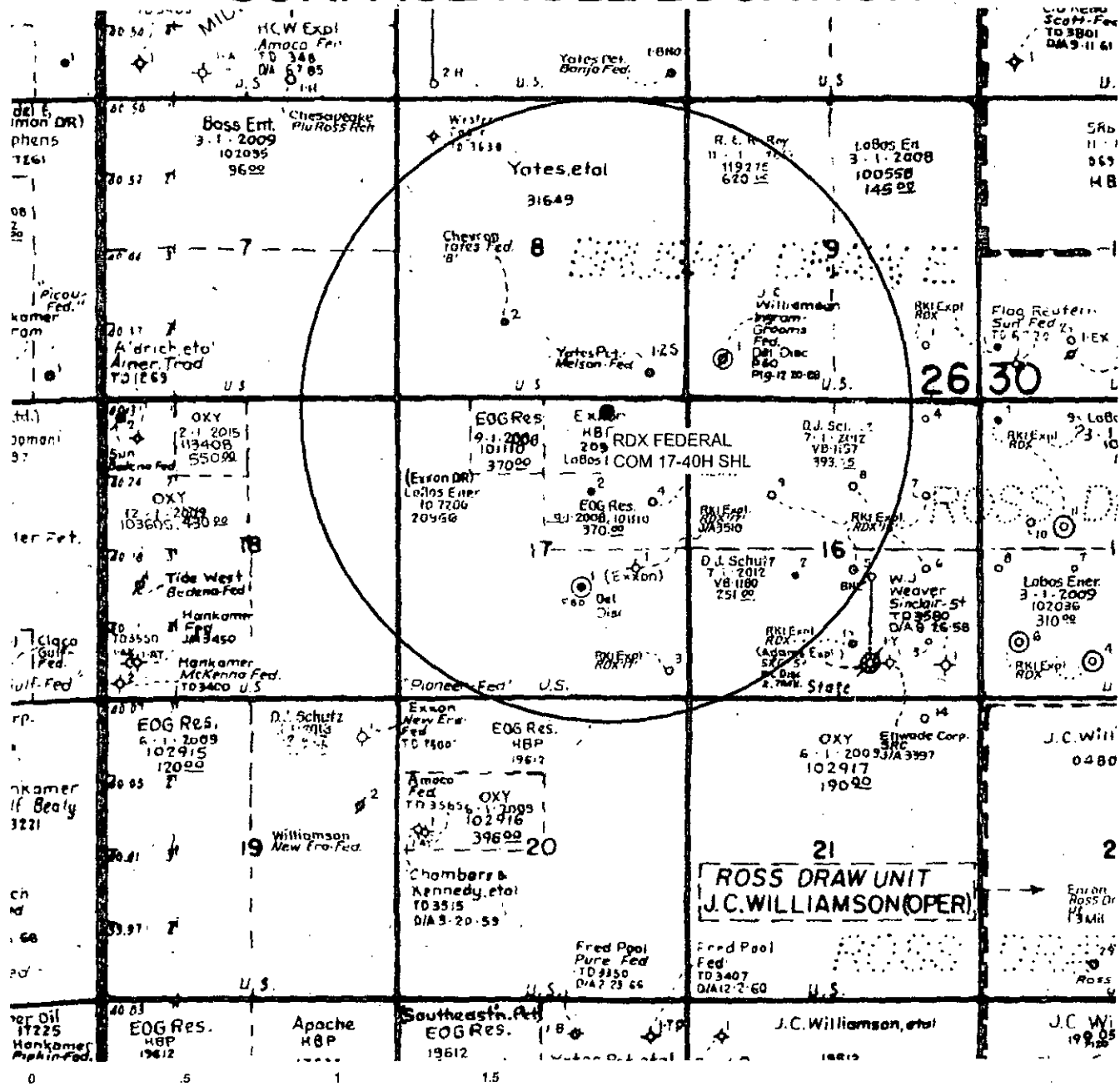


WTC, INC.
 405 S.W. 1st Street
 Andrews, TX 79714
 (432) 523-2181

RKI EXPLORATION & PRODUCTION

JOB No.: WTC50087

SURFACE HOLE LOCATION



GRAPHIC SCALE 1" = 1/2 MILE

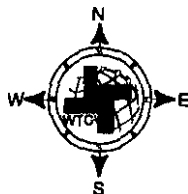
SECTION 17, T 26 S, R 30 E, N.M.P.M.

COUNTY: EDDY STATE: NM

DESCRIPTION: 175' FNL & 1310' FEL

OPERATOR: RKI EXPLORATION & PRODUCTION

WELL NAME: RDx FEDERAL COM 17-40H



DRIVING DIRECTIONS:

Beginning at US 285 at the Texas-New Mexico State line go Northwesterly 3.7 miles to CR 725 (Longhorn Road). On CR 725 go East, South & Southeast for approx. 4.1 miles to a "Y". Take the left fork going East on Ross Ln. for approx. 6.1 miles to a lease road right, Go South on lease road for approx. 1.9 miles to a two track road. Go South on lease road for approx. 1.9 miles to a two track road. Go southerly on two track road for 1.6 miles. The location flag is 75 feet East.

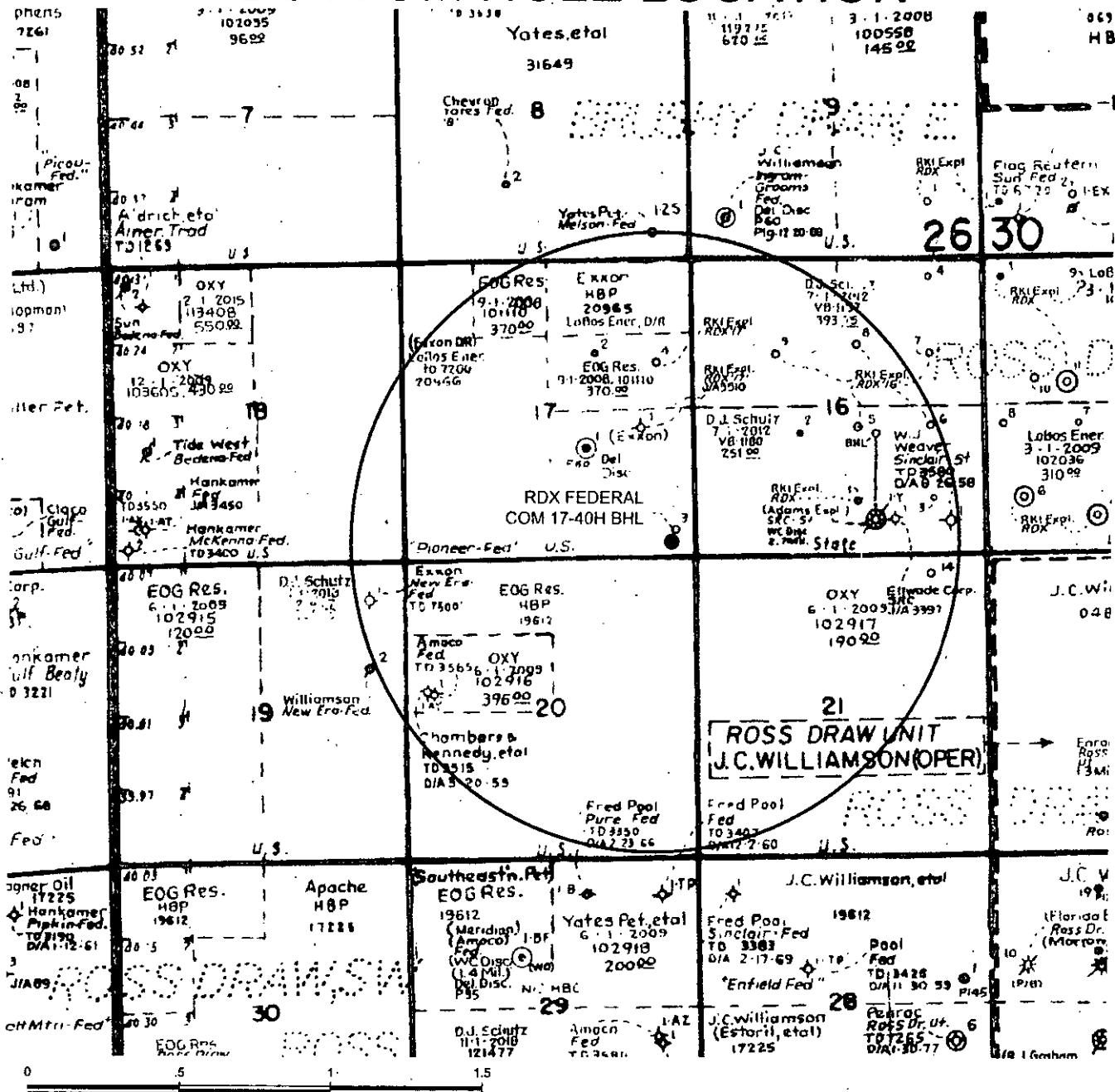


WTC, INC.
405 S.W. 1st Street
Andrews, TX 79714
(432) 523-2181

RKI EXPLORATION & PRODUCTION

JOB No.: WTC50087

BOTTOM HOLE LOCATION



GRAPHIC SCALE 1" = 1/2 MILE

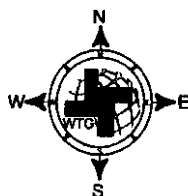
SECTION 17, T 26 S, R 30 E, N.M.P.M.

COUNTY: EDDY STATE: NM

DESCRIPTION: 300' FSL & 330' FEL

OPERATOR: RKI EXPLORATION & PRODUCTION

WELL NAME: RDX FEDERAL COM 17-40H



DRIVING DIRECTIONS:

Beginning at US 285 at the Texas-New Mexico State line go Northerly 3.7 miles to CR 725 (Longhorn Road). On CR 725 go East, South & Southeast for approx. 4.1 miles to a "Y". Take the left fork going East on Ross Ln. for approx. 6.1 miles to a lease road right, Go South on lease road for approx. 1.9 miles to a two track road. Go South on lease road for approx. 1.9 miles to a two track road. Go southerly on two track road for 1.6 miles. The location flag is 75 feet East.



WTC, INC.
405 S.W. 1st Street
Andrews, TX 79714
(432) 523-2181

RKI EXPLORATION & PRODUCTION

JOB No.: WTC50087