

District I
1625 N. French Dr., Hobbs, NM 88240
Phone: (575) 393-6161 Fax: (575) 393-0720
District II
811 S. First St., Artesia, NM 88210
Phone: (575) 748-1283 Fax: (575) 748-9720
District III
1000 Rio Brazos Road, Aztec, NM 87410
Phone: (505) 334-6178 Fax: (505) 334-6170
District IV
1220 S. St. Francis Dr., Santa Fe, NM 87505
Phone: (505) 476-3460 Fax: (505) 476-3462

State of New Mexico
Energy Minerals and Natural Resources
NM OIL CONSERVATION
ARTESIA DISTRICT
Oil Conservation Division
1220 South St. Francis Dr.
Santa Fe, NM 87505

Form C-101
Revised July 18, 2013

☐ AMENDED Report

AUG 6 2015

RECEIVED

HOBBS OCD

MAY 03 2016

APPLICATION FOR PERMIT TO DRILL, RE-ENTER, DEEPEN, PLUGBACK, OR ADD A ZONE

Operator Name and Address Lime Rock Resources II-A, L.P. 1111 Bagby Street, Suite 4600 Houston, Texas 77002		OGRID Number 277558
Property Code 309030	Property Name Simpson 15B	API Number 30-015-43299
		Well No #4

7 Surface Location

UL - Lot	Section	Township	Range	Lot Idn	Feet From	N/S Line	Feet From	E/W Line	County
B	15	18S	26E		230	N	1660	E	Eddy

Note: new APD 100' further west

8 Proposed Bottom Hole Location

UL - Lot	Section	Township	Range	Lot Idn	Feet From	N/S Line	Feet From	E/W Line	County
B	15	18S	26E		230	N	1660	E	Eddy

Stay away from Simpson 15B 1-34

9 Pool Information

Atoka; Glorieta-Yeco	Simpson 15B 1-34 - old upper Yeco well that has produced ~ 7000 BBL.	3250
----------------------	--	------

Additional Well Information

Work Type N	Well Type O	Cable/Rotary R	Lease Type P	Ground Level Elevation 3335.5
Multile N	Proposed Depth 4000' MD / 4000' TVD	Formation Yes	Contractor United Drilling, Inc.	Shut Date After 6/1/2015
Depth to Ground Water: 8 Ft.		Distance from nearest fresh water well: 0.085227273 Miles		Distance from nearest surface water: 2.5 Miles

☒ We will be using a closed-loop system in lieu of lined pits

new APD - 895' + 560 fks SATOP 946'

19 Proposed Casing and Cement Program

Type	Hole Size	Casing Size	Casing Weight/ft	Setting Depth	Sacks of Cement	Estimated TOC
Conductor	26"	20"	91.5	80	80	Surface
Surface	12-1/4"	8-5/8"	24	425	350	Surface
Production	7-7/8"	5-1/2"	17	4000	800	Surface

Casing/Cement Program: Additional Comments

820 fks

Proposed Blowout Prevention Program

Type	Working Pressure	Test Pressure	Manufacturer
XLT 11"	5000	2000	National Varco

I hereby certify that the information given above is true and complete to the best of my knowledge and belief.

I further certify that I have complied with 19.15.14.9 (A) NMAC ☐ and/or 19.15.14.9 (B) NMAC 0, if applicable. ☒

Signature:

Printed Name: Spencer Cox

Title: Production Engineer

E-mail Address: scox@limerockresources.com

Date: 8/4/2015

Phone: 713-292-9528

OIL CONSERVATION DIVISION

Approved By:

Denied

Title:

Approved Date: 8/14

SEE ATTACHED
FOR EXPLANATION

Conditions of Approval Attached

District I
1625 N. French Dr., Hobbs, NM 88240
Phone: (575) 393-6161 Fax: (575) 393-0720
District II
811 S. First St., Artesia, NM 88210
Phone: (575) 748-1283 Fax: (575) 748-9720
District III
1000 Rio Brazos Road, Aztec, NM 87410
Phone: (505) 334-6178 Fax: (505) 334-6170
District IV
1220 S. St. Francis Dr., Santa Fe, NM 87505
Phone: (505) 476-3460 Fax: (505) 476-3462

HOBBS CCD
State of New Mexico
Energy, Minerals & Natural Resources Department
OIL CONSERVATION DIVISION
1220 South St. Francis
Santa Fe, NM 87505

Form C-102
Revised August 1, 2011
Submit one copy to appropriate
District Office
☐ AMENDED REPORT

WELL LOCATION AND ACREAGE DEDICATION PLAT

1 API Number 30-015-43299		2 Pool Code 3250		3 Pool Name Atoka - Bloneta - Yeso	
4 Property Code 309030		5 Property Name SIMPSON 15B			6 Well Number 4
7 OGRID No. 277558		8 Operator Name LIME ROCK RESOURCES II-A, L.P.			9 Elevation 3335.5

" Surface Location

UL or lot no.	Section	Township	Range	Lot Idn	Feet from the	North/South line	Feet from the	East/West line	County
B	15	18 S	26 E		230	NORTH	1660	EAST	EDDY

" Bottom Hole Location If Different From Surface

UL or lot no.	Section	Township	Range	Lot Idn	Feet from the	North/South line	Feet from the	East/West line	County
10 Dedicated Acres		11 Joint or Infill		12 Consolidation Code		13 Order No.			

No allowable will be assigned to this completion until all interests have been consolidated or a non-standard unit has been approved by the division.

S89°56'45"E 2645.71 FT		S89°56'45"E 2645.71 FT	
NW CORNER SEC. 15 LAT. = 32.7551324°N LONG. = 104.3778141°W NMSP EAST (FT) N = 638493.39 E = 527504.12	DNF SURFACE LOCATION SIMPSON 15B 4 ELEV. = 3335.5' LAT. = 32.7544943°N (NAD27) LONG. = 104.3660020°W NMSP EAST (FT) N = 638259.97 E = 531135.48	NE CORNER SEC. 15 LAT. = 32.7551234°N LONG. = 104.3606067°W NMSP EAST (FT) N = 638488.38 E = 532794.24	S00°12'43"E 2659.83 FT S00°12'43"E 2659.83 FT
NOTE: LATITUDE AND LONGITUDE COORDINATES ARE SHOWN USING THE NORTH AMERICAN DATUM OF 1927 (NAD27). LISTED NEW MEXICO STATE PLANE EAST COORDINATES ARE GRID (NAD27). BASIS OF BEARING AND DISTANCES USED ARE NEW MEXICO STATE PLANE EAST (NAD83) COORDINATES MODIFIED TO THE SURFACE.			
SW CORNER SEC. 15 LAT. = 32.7406052°N LONG. = 104.3779091°W NMSP EAST (FT) N = 633208.25 E = 527472.72	S/4 CORNER SEC. 15 LAT. = 32.7405225°N LONG. = 104.3692841°W NMSP EAST (FT) N = 633177.37 E = 530124.75	SE CORNER SEC. 15 LAT. = 32.7405050°N LONG. = 104.3605383°W NMSP EAST (FT) N = 633170.07 E = 532813.91	S00°12'43"E 2659.83 FT S00°12'43"E 2659.83 FT
N89°19'55"W 2652.86 FT		N89°50'40"W 2689.83 FT	

" OPERATOR CERTIFICATION
 I hereby certify that the information contained herein is true and complete to the best of my knowledge and belief, and that this organization either owns a working interest or undivided mineral interest in the land including the proposed bottom hole location or has a right to drill this well at this location pursuant to a contract with an owner of such a mineral or working interest, or to a voluntary pooling agreement or a compulsory pooling order heretofore entered by the division.

Signature: Spencer Cox Date: 8-3-15
 Printed Name: Spencer Cox
 E-mail Address: scop@limeresources.com

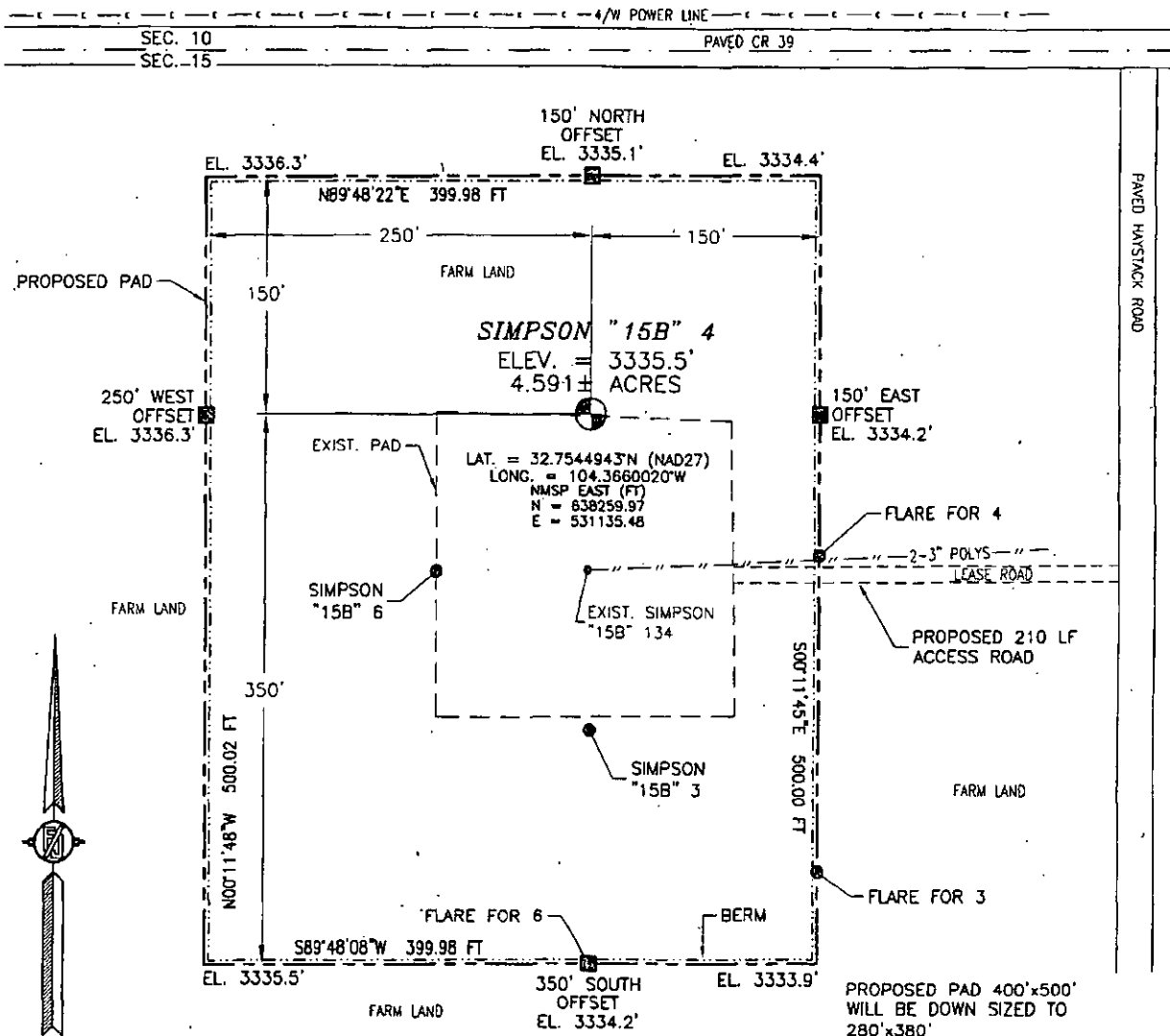
" SURVEYOR CERTIFICATION
 I hereby certify that the well location shown on this plat was plotted from field notes of actual surveys made by me or under my supervision and that the same is true and correct to the best of my knowledge.

Signature and Seal of Professional Surveyor: FILIMON F. JARAMILLO
 Certificate Number: FILIMON F. JARAMILLO, PLS 12797
 SURVEY NO. 3169

SECTION 15, TOWNSHIP 18 SOUTH, RANGE 26 EAST, N.M.P.M.
EDDY COUNTY, STATE OF NEW MEXICO

SITE MAP

NOTE: LATITUDE AND LONGITUDE COORDINATES ARE SHOWN USING THE NORTH AMERICAN DATUM OF 1927 (NAD27). LISTED NEW MEXICO STATE PLANE EAST COORDINATES ARE GRID (NAD27). BASIS OF BEARING AND DISTANCES USED ARE NEW MEXICO STATE PLANE EAST COORDINATES (NAD 83) MODIFIED TO THE SURFACE.



010 50 100 200

SCALE 1" = 100'

DIRECTIONS TO LOCATION

FROM STATE ROAD 229 (HALDEMAN) AND CR 39 (FOUR DINKUS) GO WEST ON CR 39 0.25 OF A MILE, TURN LEFT ON HAYSTACK ROAD AND GO SOUTH 335', TURN RIGHT ON LEASE ROAD AND GO WEST 210' TO THE EAST EDGE OF PROPOSED PAD FOR THIS LOCATION.

LIME ROCK RESOURCES II-A, L.P.
SIMPSON "15B" 4
LOCATED 230 FT. FROM THE NORTH LINE
AND 1660 FT. FROM THE EAST LINE OF
SECTION 15, TOWNSHIP 18 SOUTH,
RANGE 26 EAST, N.M.P.M.
EDDY COUNTY, STATE OF NEW MEXICO

MAY 23, 2015

SURVEY NO. 3169

MADRON SURVEYING, INC. 301 SOUTH CANAL CARLSBAD, NEW MEXICO
(575) 234-3341

The map displays a grid of land parcels with various labels and features:

- Sections:** 9, 10, 11, 14, 15, 16.
- Parcels:**
 - SIMPSON "15B" 4 (large central parcel)
 - SIMPSON "15B" 3 (small parcel near center)
 - SIMPSON "15B" 615 (parcel below Simpson "15B" 3)
- River:** Rio Grande (labeled "Rio" near the bottom right).
- Roads:** Several roads are shown, including a road labeled "3360" and another labeled "3370".
- Survey Points:** Numerous points are marked with numbers and letters, such as "3347", "3337", "3326", "3316", "3311", "3302", "3370", "3366", "3356", "3327", "3323", "3344", "3337", "3331", "3330", "3329", "3328", "3327", "3326", "3325", "3324", "3323", "3322", "3321", "3320", "3319", "3318", "3317", "3316", "3315", "3314", "3313", "3312", "3311", "3310", "3309", "3308", "3307", "3306", "3305", "3304", "3303", "3302", "3301", "3300", "3299", "3298", "3297", "3296", "3295", "3294", "3293", "3292", "3291", "3290", "3289", "3288", "3287", "3286", "3285", "3284", "3283", "3282", "3281", "3280", "3279", "3278", "3277", "3276", "3275", "3274", "3273", "3272", "3271", "3270", "3269", "3268", "3267", "3266", "3265", "3264", "3263", "3262", "3261", "3260", "3259", "3258", "3257", "3256", "3255", "3254", "3253", "3252", "3251", "3250", "3249", "3248", "3247", "3246", "3245", "3244", "3243", "3242", "3241", "3240", "3239", "3238", "3237", "3236", "3235", "3234", "3233", "3232", "3231", "3230", "3229", "3228", "3227", "3226", "3225", "3224", "3223", "3222", "3221", "3220", "3219", "3218", "3217", "3216", "3215", "3214", "3213", "3212", "3211", "3210", "3209", "3208", "3207", "3206", "3205", "3204", "3203", "3202", "3201", "3200", "3199", "3198", "3197", "3196", "3195", "3194", "3193", "3192", "3191", "3190", "3189", "3188", "3187", "3186", "3185", "3184", "3183", "3182", "3181", "3180", "3179", "3178", "3177", "3176", "3175", "3174", "3173", "3172", "3171", "3170", "3169", "3168", "3167", "3166", "3165", "3164", "3163", "3162", "3161", "3160", "3159", "3158", "3157", "3156", "3155", "3154", "3153", "3152", "3151", "3150", "3149", "3148", "3147", "3146", "3145", "3144", "3143", "3142", "3141", "3140", "3139", "3138", "3137", "3136", "3135", "3134", "3133", "3132", "3131", "3130", "3129", "3128", "3127", "3126", "3125", "3124", "3123", "3122", "3121", "3120", "3119", "3118", "3117", "3116", "3115", "3114", "3113", "3112", "3111", "3110", "3109", "3108", "3107", "3106", "3105", "3104", "3103", "3102", "3101", "3100", "3099", "3098", "3097", "3096", "3095", "3094", "3093", "3092", "3091", "3090", "3089", "3088", "3087", "3086", "3085", "3084", "3083", "3082", "3081", "3080", "3079", "3078", "3077", "3076", "3075", "3074", "3073", "3072", "3071", "3070", "3069", "3068", "3067", "3066", "3065", "3064", "3063", "3062", "3061", "3060", "3059", "3058", "3057", "3056", "3055", "3054", "3053", "3052", "3051", "3050", "3049", "3048", "3047", "3046", "3045", "3044", "3043", "3042", "3041", "3040", "3039", "3038", "3037", "3036", "3035", "3034", "3033", "3032", "3031", "3030", "3029", "3028", "3027", "3026", "3025", "3024", "3023", "3022", "3021", "3020", "3019", "3018", "3017", "3016", "3015", "3014", "3013", "3012", "3011", "3010", "3009", "3008", "3007", "3006", "3005", "3004", "3003", "3002", "3001", "3000", "2999", "2998", "2997", "2996", "2995", "2994", "2993", "2992", "2991", "2990", "2989", "2988", "2987", "2986", "2985", "2984", "2983", "2982", "2981", "2980", "2979", "2978", "2977", "2976", "2975", "2974", "2973", "2972", "2971", "2970", "2969", "2968", "2967", "2966", "2965", "2964", "2963", "2962", "2961", "2960", "2959", "2958", "2957", "2956", "2955", "2954", "2953", "2952", "2951", "2950", "2949", "2948", "2947", "2946", "2945", "2944", "2943", "2942", "2941", "2940", "2939", "2938", "2937", "2936", "2935", "2934", "2933", "2932", "2931", "2930", "2929", "2928", "2927", "2926", "2925", "2924", "2923", "2922", "2921", "2920", "2919", "2918", "2917", "2916", "2915", "2914", "2913", "2912", "2911", "2910", "2909", "2908", "2907", "2906", "2905", "2904", "2903", "2902", "2901", "2900", "2899", "2898", "2897", "2896", "2895", "2894", "2893", "2892", "2891", "2890", "2889", "2888", "2887", "2886", "2885", "2884", "2883", "2882", "2881", "2880", "2879", "2878", "2877", "2876", "2875", "2874", "2873", "2872", "2871", "2870", "2869", "2868", "2867", "2866", "2865", "2864", "2863", "2862", "2861", "2860", "2859", "2858", "2857", "2856", "2855", "2854", "2853", "2852", "2851", "2850", "2849", "2848", "2847", "2846", "2845", "2844", "2843", "2842", "2841", "2840", "2839", "2838", "2837", "2836", "2835", "2834", "2833", "2832", "2831", "2830", "2829", "2828", "2827", "2826", "2825", "2824", "2823", "2822", "2821", "2820", "2819", "2818", "2817", "2816", "2815", "2814", "2813", "2812", "2811", "2810", "2809", "2808", "2807", "2806", "2805", "2804", "2803", "2802", "2801", "2800", "2799", "2798", "2797", "2796", "2795", "2794", "2793", "2792", "2791", "2790", "2789", "2788", "2787", "2786", "2785", "2784", "2783", "2782", "2781", "2780", "2779", "2778", "2777", "2776", "2775", "2774", "2773", "2772", "2771", "2770", "2769", "2768", "2767", "2766", "2765", "2764", "2763", "2762", "2761", "2760", "2759", "2758", "2757", "2756", "2755", "2754", "2753", "2752", "2751", "2750", "2749", "2748", "2747", "2746", "2745", "2744", "2743", "2742", "2741", "2740", "2739", "2738", "2737", "2736", "2735", "2734", "2733", "2732", "2731", "2730", "2729", "2728", "2727", "2726", "2725", "2724", "2723", "2722", "2721", "

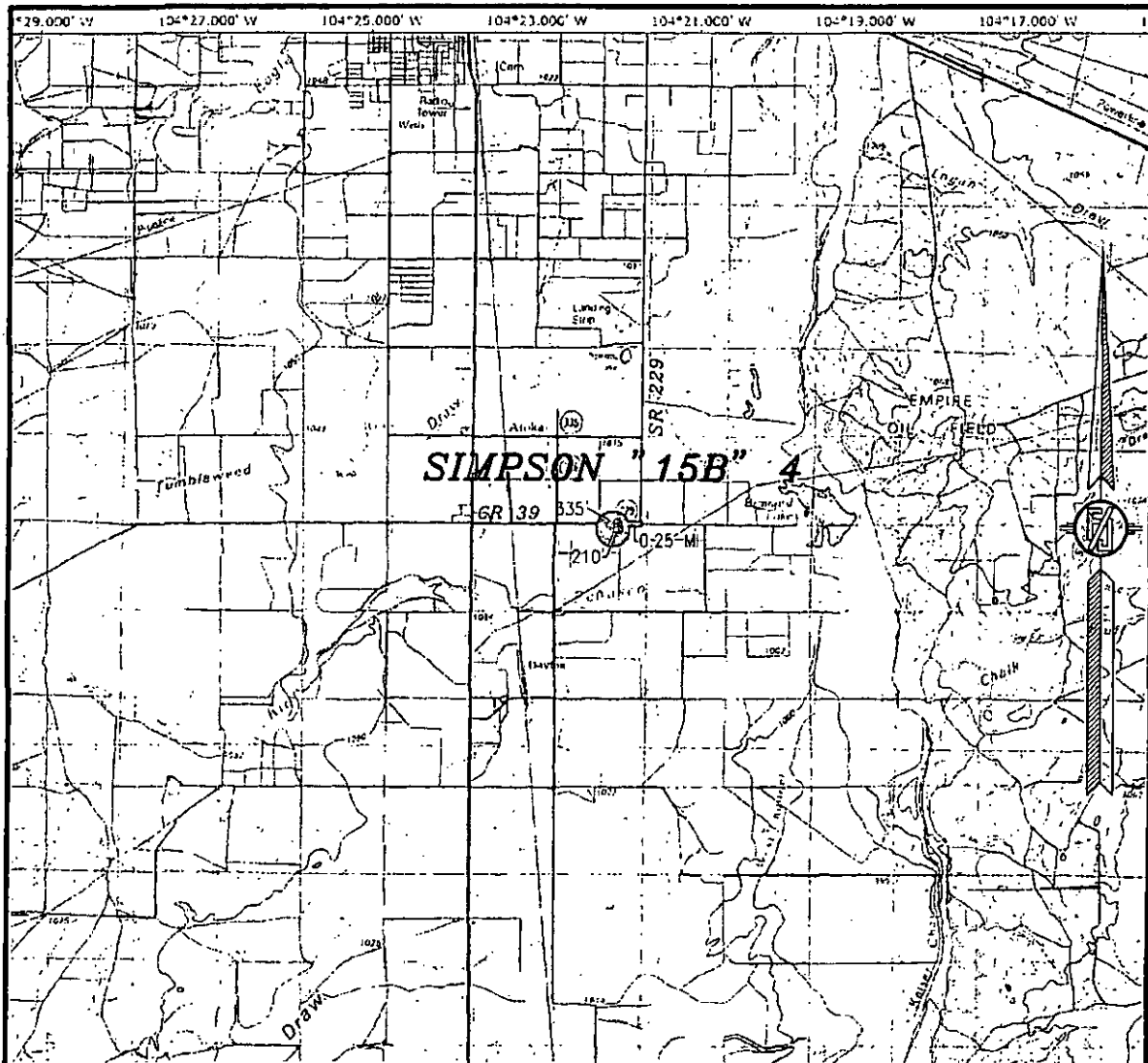
NOT TO SCALE

MAY 23, 2015

301 SOUTH CANAL
(575) 234-3141

SURVEY NO. 3169

SECTION 15, TOWNSHIP 18 SOUTH, RANGE 26 EAST, N.M.P.M.
EDDY COUNTY, STATE OF NEW MEXICO
VICINITY MAP



DISTANCES IN MILES

NOT TO SCALE

DIRECTIONS TO LOCATION
FROM STATE ROAD 229 (HALDEMAN) AND CR 39 (FOUR DINKUS) GO WEST ON CR 39 0.25 OF A MILE, TURN LEFT ON HAYSTACK ROAD AND GO SOUTH 335°. TURN RIGHT ON LEASE ROAD AND GO WEST 210' TO THE EAST EDGE OF PROPOSED PAD FOR THIS LOCATION.

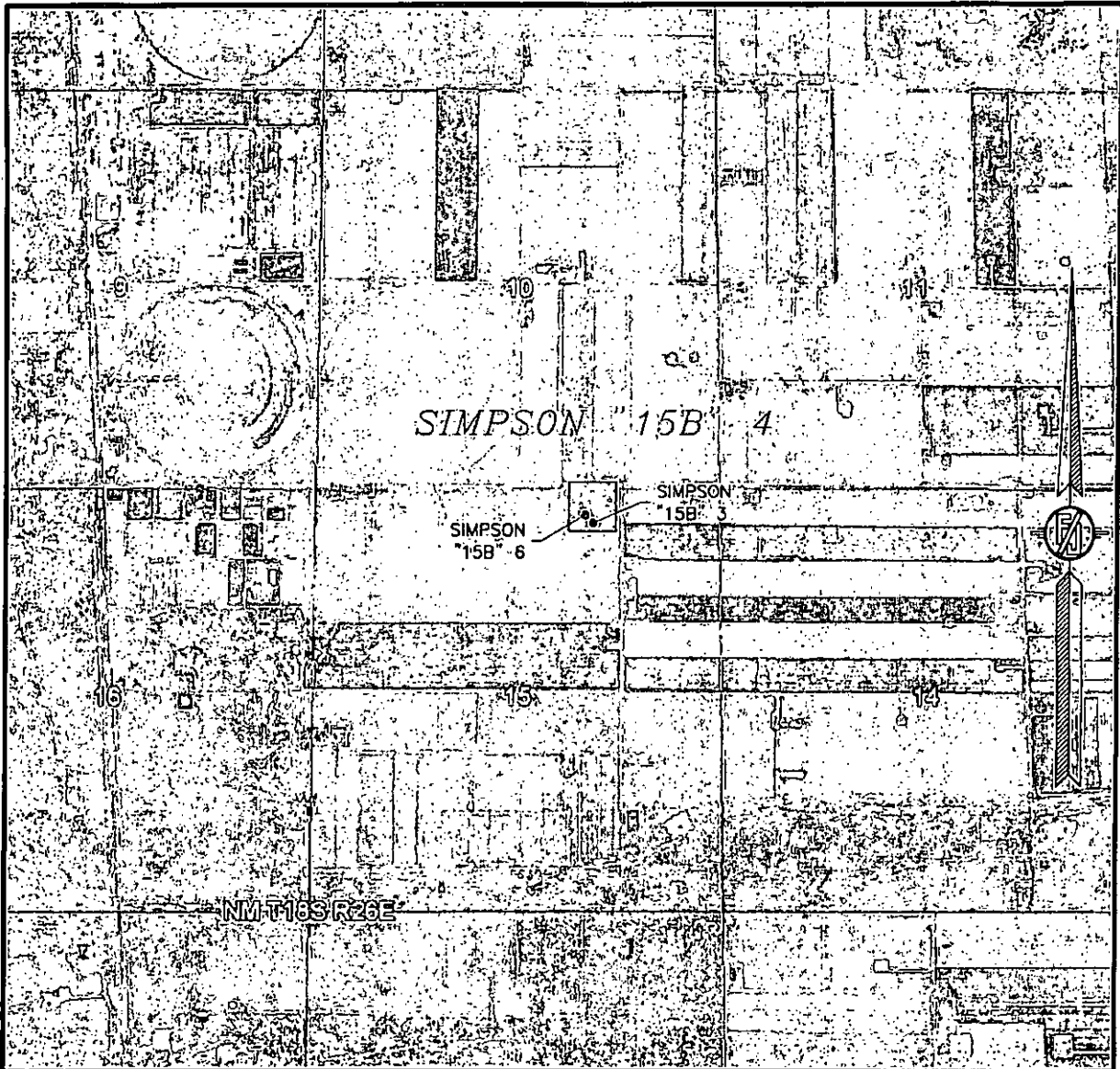
LIME ROCK RESOURCES II-A, L.P.
SIMPSON "15B" 4
LOCATED 230 FT. FROM THE NORTH LINE
AND 1660 FT. FROM THE EAST LINE OF
SECTION 15, TOWNSHIP 18 SOUTH,
RANGE 26 EAST, N.M.P.M.
EDDY COUNTY, STATE OF NEW MEXICO

MAY 23, 2015

MADRON SURVEYING, INC. 301 SOUTH CANAL (575) 234-3341 CARLSBAD, NEW MEXICO

SURVEY NO. 3169

SECTION 15, TOWNSHIP 18 SOUTH, RANGE 26 EAST, N.M.P.M.
EDDY COUNTY, STATE OF NEW MEXICO
AERIAL PHOTO



NOT TO SCALE
AERIAL PHOTO:
GOOGLE EARTH
MAY 2014

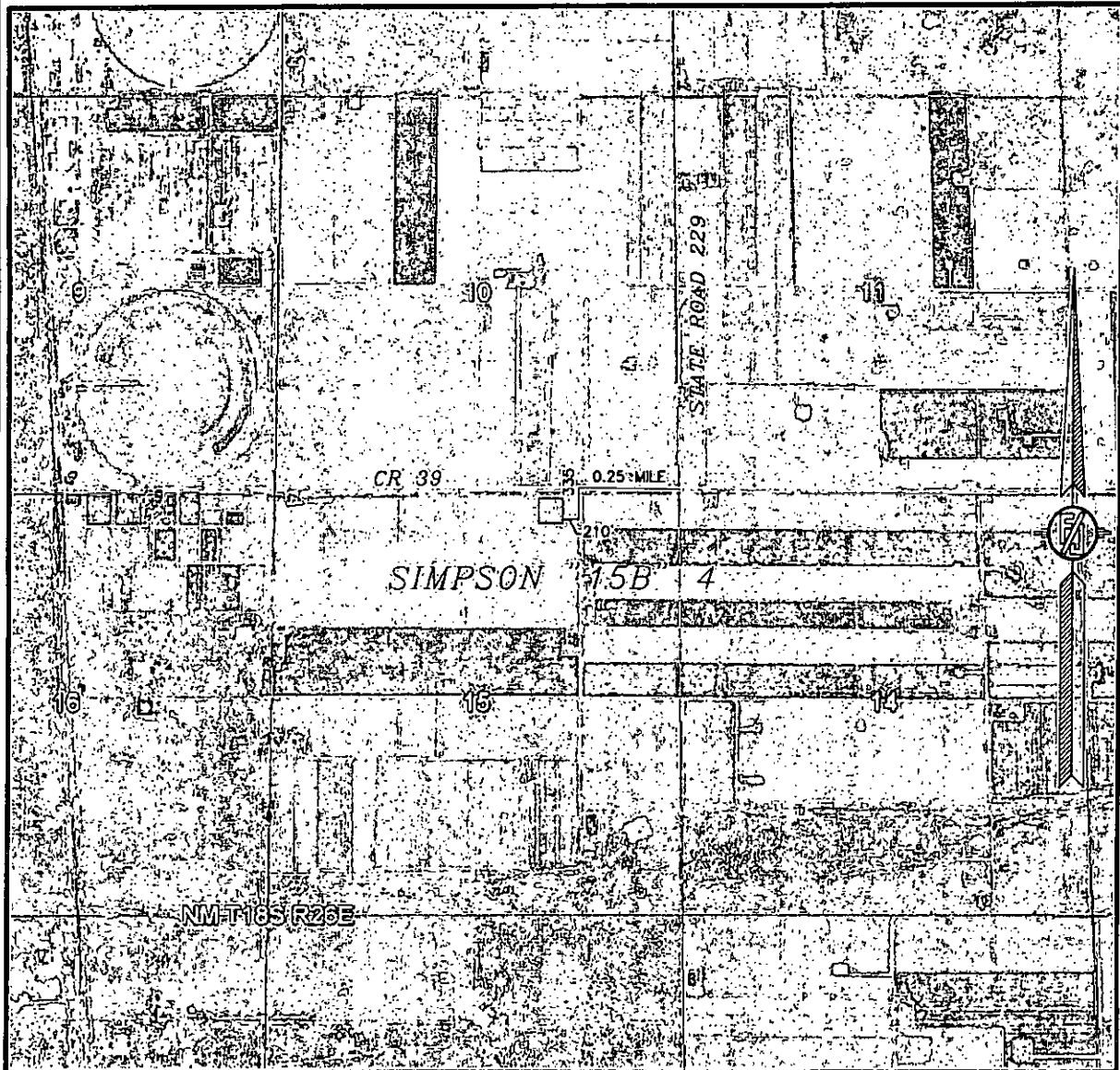
LIME ROCK RESOURCES II-A, L.P.
SIMPSON "15B" 4
LOCATED 230 FT. FROM THE NORTH LINE
AND 1660 FT. FROM THE EAST LINE OF
SECTION 15, TOWNSHIP 18 SOUTH,
RANGE 26 EAST, N.M.P.M.
EDDY COUNTY, STATE OF NEW MEXICO

MAY 23, 2015

SURVEY NO. 3169

MADRON SURVEYING, INC. 301 SOUTH CANAL (575) 234-3341 CARLSBAD, NEW MEXICO

SECTION 15, TOWNSHIP 18 SOUTH, RANGE 26 EAST, N.M.P.M.
EDDY COUNTY, STATE OF NEW MEXICO
ACCESS AERIAL ROUTE MAP



NOT TO SCALE
AERIAL PHOTO:
GOOGLE EARTH
MAY 2014

LIME ROCK RESOURCES II-A, L.P.
SIMPSON "15B" 4

LOCATED 230 FT. FROM THE NORTH LINE
AND 1660 FT. FROM THE EAST LINE OF
SECTION 15, TOWNSHIP 18 SOUTH,
RANGE 26 EAST, N.M.P.M.
EDDY COUNTY, STATE OF NEW MEXICO

MAY 23, 2015

SURVEY NO. 3169

MADRON SURVEYING, INC. 301 SOUTH CANAL (575) 234-3341 CARLSBAD, NEW MEXICO

RIGHT-OF-WAY FOR SIX 3" SDR 7 POLY BURIED FLOWLINES FROM THE SIMPSON "15B" 3, 4, AND 6
TO THE SIMPSON "15" BATTERY

SURVEYOR CERTIFICATE

I, FILMON F. JARAMILLO, A NEW MEXICO PROFESSIONAL SURVEYOR NO. 12797, HEREBY CERTIFY THAT I HAVE CONDUCTED AND AM RESPONSIBLE FOR THIS SURVEY, THAT THIS SURVEY IS TRUE AND CORRECT TO THE BEST OF MY KNOWLEDGE AND BELIEF, AND THAT THIS SURVEY AND PLAT MEET THE MINIMUM STANDARDS FOR LAND SURVEYING IN THE STATE OF NEW MEXICO.

IN WITNESS WHEREOF, THIS CERTIFICATE IS EXECUTED AT CARLSBAD,

NEW MEXICO, THIS 20 DAY OF JUNE 2015

12797

MADRON SURVEYING, INC.
301 SOUTH CANAL
CARLSBAD, NEW MEXICO 88220
Phone (575) 234-3341

1.) THE INTENT OF THIS ROUTE SURVEY IS TO ACQUIRE AN EASEMENT.

2.) BASIS OF BEARING IS NMSP EAST
MODIFIED TO SURFACE COORDINATES.

MADRON SURVEYING, (INC. 301 SOUTH PALM (575) 234-3341 GARLESBAD, NEW MEXICO

SURVEY NO. 3169

FLOWLINE PLAT

RIGHT-OF-WAY FOR SIX 3" SDR 7 POLY BURIED FLOWLINES FROM THE SIMPSON "15B" 3, 4, AND 6
TO THE SIMPSON "15" BATTERY

**LIME ROCK RESOURCES II-A, L.P.
CENTERLINE SURVEY OF A PIPELINE CROSSING
SECTION 15, TOWNSHIP 18 SOUTH, RANGE 26 EAST, N.M.P.M.
EDDY COUNTY, STATE OF NEW MEXICO
MAY 23, 2015**

DESCRIPTION

A STRIP OF LAND 30 FEET WIDE CROSSING FEE LAND IN SECTION 15, TOWNSHIP 18 SOUTH, RANGE 26 EAST, N.M.P.M., EDDY COUNTY, STATE OF NEW MEXICO AND BEING 15 FEET EACH SIDE OF THE FOLLOWING DESCRIBED CENTERLINE SURVEY:

BEGINNING AT A POINT WITHIN THE NW/4 NE/4 OF SAID SECTION 15, TOWNSHIP 18 SOUTH, RANGE 26 EAST, N.M.P.M., WHENCE THE NORTHEAST CORNER OF SAID SECTION 15, TOWNSHIP 18 SOUTH, RANGE 26 EAST, N.M.P.M. BEARS N78°01'17"E, A DISTANCE OF 1542.43 FEET;
THENCE N87°39'01"E A DISTANCE OF 230.55 FEET TO AN ANGLE POINT OF THE LINE HEREIN DESCRIBED;
THENCE N00°27'20"E A DISTANCE OF 291.33 FEET TO AN ANGLE POINT OF THE LINE HEREIN DESCRIBED;
THENCE S89°29'23"E A DISTANCE OF 1276.34 FEET THE TERMINUS OF THIS CENTERLINE SURVEY, WHENCE THE NORTHEAST CORNER OF SAID SECTION 15, TOWNSHIP 18 SOUTH, RANGE 26 EAST, N.M.P.M. BEARS N00°12'43"W, A DISTANCE OF 30.72 FEET;

SAID STRIP OF LAND BEING 1798.22 FEET OR 108.98 RODS IN LENGTH, CONTAINING 1.238 ACRES MORE OR LESS AND BEING ALLOCATED BY FORTIES AS FOLLOWS:

NW/4 NE/4	186.00 L.F.	11.27 RODS	0.128 ACRES
NE/4 NE/4	1612.22 L.F.	97.71 RODS	1.110 ACRES

SURVEYOR CERTIFICATE

I, FILMON F. JARAMILLO, A NEW MEXICO PROFESSIONAL SURVEYOR NO. 12797, HEREBY CERTIFY THAT I HAVE CONDUCTED AND AM RESPONSIBLE FOR THIS SURVEY, THAT THIS SURVEY IS TRUE AND CORRECT TO THE BEST OF MY KNOWLEDGE AND BELIEF, AND THAT THIS SURVEY AND PLAT MEET THE MINIMUM STANDARDS FOR LAND SURVEYING IN THE STATE OF NEW MEXICO.

IN WITNESS WHEREOF, THIS CERTIFICATE IS EXECUTED AT CARLSBAD,

NEW MEXICO, THIS 12 DAY OF JUNE 2015

GENERAL NOTES

- 1.) THE INTENT OF THIS ROUTE SURVEY IS TO ACQUIRE AN EASEMENT.
- 2.) BASIS OF BEARING IS NMSP EAST MODIFIED TO SURFACE COORDINATES.

SHEET: 2-6

MADRON SURVEYING, INC.

301 SOUTH CANAL
(575) 234-3341

MADRON SURVEYING, INC.
301 SOUTH CANAL
CARLSBAD, NEW MEXICO 88220
Phone (575) 234-3341

SURVEY NO. 3169

CARLSBAD, NEW MEXICO

RIGHT-OF-WAY FOR SIX 3" SDR 7 POLY BURIED FLOWLINES FROM THE SIMPSON "15B" 3, 4, AND 6
TO THE SIMPSON "15" BATTERY

MAY 23, 2015

(TIE) N65°02'02"W 512.63 FT
S89°39'50"E 2636.00 FT
SIMPSON'S 15" BATTERY
N83°03'08"W 20.13 FT
N05°53'07"E 20.32 FT
S87°51'43"E 156.83 FT
S02°24'03"W 199.65 FT
S89°29'23"E 334.17 FT

10 11
1/2" ROW RD
(TIE) 15 14
30.72 FT
N00°12'43"W
2659.83 FT
N00°12'43"W
2659.83 FT
17+98.2 SECTION LINE
STA 21+32.4 PI RIGHT
STA 23+32.0 PI LEFT
STA 24+88.9 PI LEFT
STA 25+09.2 PI LEFT
STA 25+29.3 E.O.L. AT EXIST. HEADER

SEC 14
T. 18S., R. 26E.
FEE

11 12
14 13
SPIKE NAIL
S00°18'34"E
2651.16 FT
S00°18'34"E
2651.16 FT

15 14
1/2" ROW RD
22 23
N89°39'07"W 2618.23 FT
1/4" RD
S89°56'57"W 2662.69 FT
1/2" ROW RD
14 13
23 24

Scale: 1" = 1000'

MADRON SURVEYING, INC. 301 SOUTH CANAL CARLSBAD, NEW MEXICO
(575) 234-3541

SURVEY NO. 3169

FLOWLINE PLAT

RIGHT-OF-WAY FOR SIX 3" SDR 7 POLY BURIED FLOWLINES FROM THE SIMPSON "15B" 3, 4, AND 6
TO THE SIMPSON "15" BATTERY

LIME ROCK RESOURCES II-A, L.P.
CENTERLINE SURVEY OF A PIPELINE CROSSING
SECTION 14, TOWNSHIP 18 SOUTH, RANGE 26 EAST, N.M.P.M.
EDDY COUNTY, STATE OF NEW MEXICO
MAY 23, 2015

DESCRIPTION

A STRIP OF LAND 30 FEET WIDE CROSSING FEE LAND IN SECTION 14, TOWNSHIP 18 SOUTH, RANGE 26 EAST, N.M.P.M., EDDY COUNTY, STATE OF NEW MEXICO AND BEING 15 FEET EACH SIDE OF THE FOLLOWING DESCRIBED CENTERLINE SURVEY:

BEGINNING AT A POINT WITHIN THE NW/4 NW/4 OF SAID SECTION 14, TOWNSHIP 18 SOUTH, RANGE 26 EAST, N.M.P.M., WHENCE THE NORTHWEST CORNER OF SAID SECTION 14, TOWNSHIP 18 SOUTH, RANGE 26 EAST, N.M.P.M. BEARS N00°12'43"W, A DISTANCE OF 30.72 FEET;

THENCE S89°29'23"E A DISTANCE OF 334.17 FEET TO AN ANGLE POINT OF THE LINE HEREIN DESCRIBED;

THENCE S02°24'03"W A DISTANCE OF 199.65 FEET TO AN ANGLE POINT OF THE LINE HEREIN DESCRIBED;

THENCE S87°51'43"E A DISTANCE OF 156.83 FEET TO AN ANGLE POINT OF THE LINE HEREIN DESCRIBED;

THENCE N05°53'07"E A DISTANCE OF 20.32 FEET TO AN ANGLE POINT OF THE LINE HEREIN DESCRIBED;

THENCE N83°03'08"W A DISTANCE OF 20.13 FEET THE TERMINUS OF THIS CENTERLINE SURVEY, WHENCE THE NORTHWEST CORNER OF SAID SECTION 14, TOWNSHIP 18 SOUTH, RANGE 26 EAST, N.M.P.M. BEARS N65°02'02"W, A DISTANCE OF 512.63 FEET;

SAID STRIP OF LAND BEING 731.10 FEET OR 44.31 RODS IN LENGTH, CONTAINING 0.504 ACRES MORE OR LESS AND BEING ALLOCATED BY FORTIES AS FOLLOWS:

NW/4 NW/4 731.10 L.F. 44.31 RODS 0.504 ACRES

SURVEYOR CERTIFICATE

I, FILMON F. JARAMILLO, A NEW MEXICO PROFESSIONAL SURVEYOR NO. 12797, HEREBY CERTIFY THAT I HAVE CONDUCTED AND AM RESPONSIBLE FOR THIS SURVEY, THAT THIS SURVEY IS TRUE AND CORRECT TO THE BEST OF MY KNOWLEDGE AND BELIEF, AND THAT THIS SURVEY AND PLAT MEET THE MINIMUM STANDARDS FOR LAND SURVEYING IN THE STATE OF NEW MEXICO.

IN WITNESS WHEREOF, THIS CERTIFICATE IS EXECUTED AT CARLSBAD,

NEW MEXICO, THIS 12 DAY OF JUNE 2015

GENERAL NOTES

1.) THE INTENT OF THIS ROUTE SURVEY IS TO ACQUIRE AN EASEMENT.

2.) BASIS OF BEARING IS NMSP EAST MODIFIED TO SURFACE COORDINATES.

SHEET: 4-6

MADRON SURVEYING, INC.

FILMON F. JARAMILLO, P.S. 12797

301 SOUTH CANAL
(575) 234-3341

MADRON SURVEYING, INC.
301 SOUTH CANAL
CARLSBAD, NEW MEXICO 88220
Phone (575) 234-3341

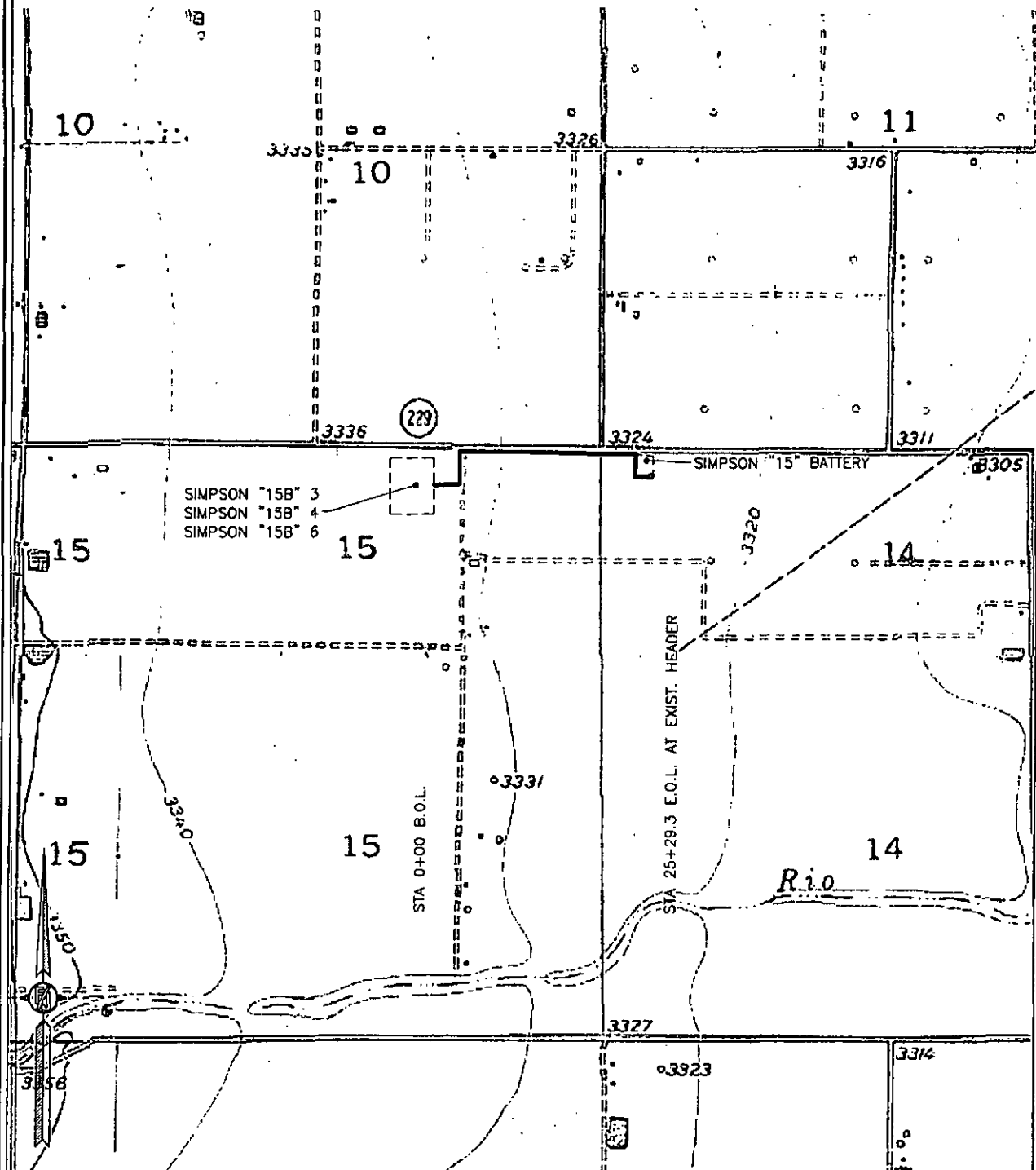
SURVEY NO. 3169

CARLSBAD, NEW MEXICO

FLOWLINE PLAT

RIGHT-OF-WAY FOR SIX 3" SDR 7 POLY BURIED FLOWLINES FROM THE SIMPSON "15B" 3, 4, AND 6
TO THE SIMPSON "15" BATTERY

LIME ROCK RESOURCES II-A, L.P.
CENTERLINE SURVEY OF A PIPELINE CROSSING
SECTIONS 15, 14, TOWNSHIP 18 SOUTH, RANGE 26 EAST, N.M.P.M.
EDDY COUNTY, STATE OF NEW MEXICO
MAY 23, 2015



SHEET: 5-6

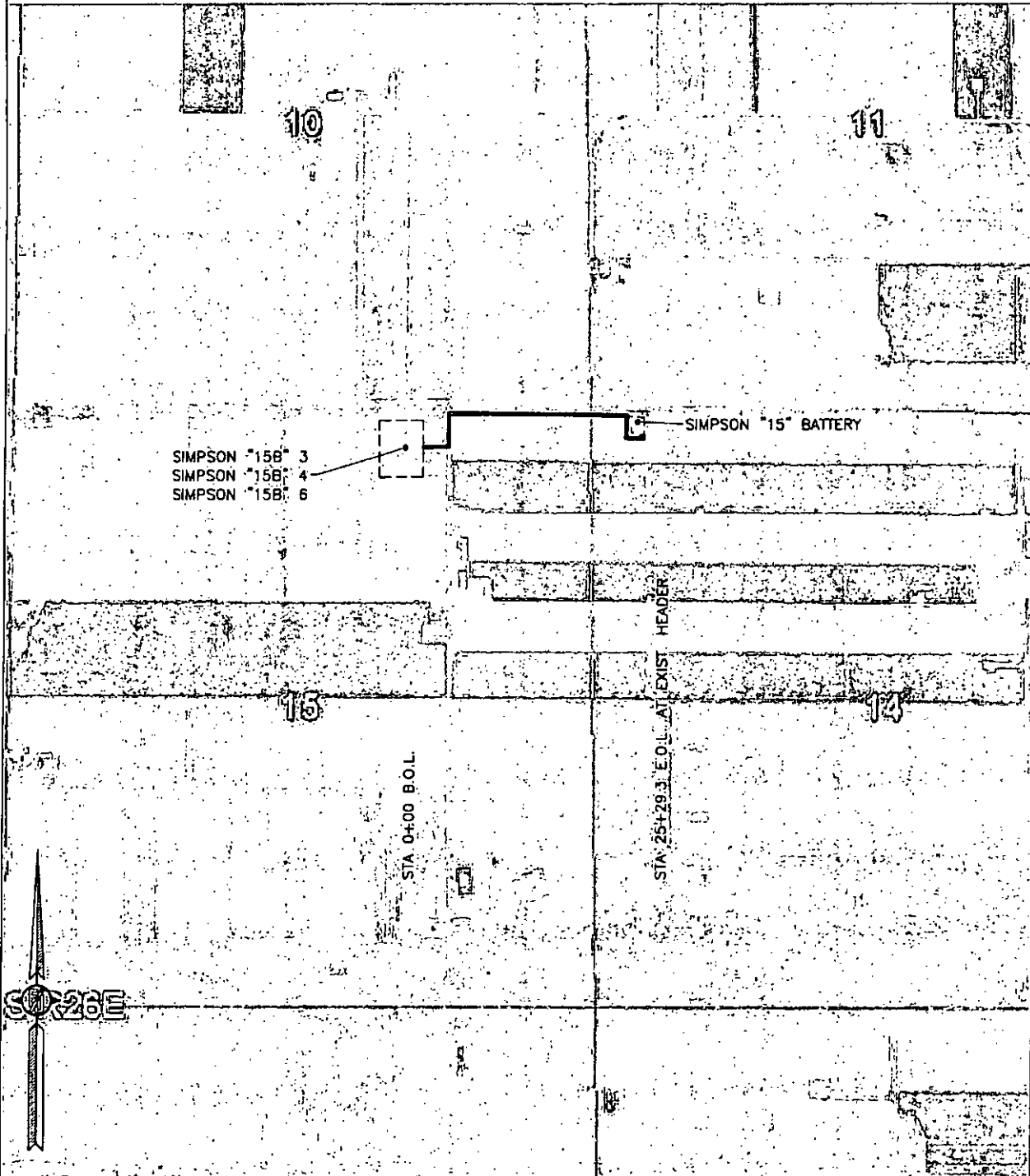
MADRON SURVEYING, INC. 301 SOUTH CANAL (575) 234-3341 CARLSBAD, NEW MEXICO

SURVEY NO. 3169

FLOWLINE PLAT

RIGHT-OF-WAY FOR SIX 3" SDR 7 POLY BURIED FLOWLINES FROM THE SIMPSON "15B" 3, 4, AND 6
TO THE SIMPSON "15" BATTERY

LIME ROCK RESOURCES II-A, L.P.
CENTERLINE SURVEY OF A PIPELINE CROSSING
SECTIONS 15, 14, TOWNSHIP 18 SOUTH, RANGE 26 EAST, N.M.P.M.
EDDY COUNTY, STATE OF NEW MEXICO
MAY 23, 2015



SHEET: 6-6

SURVEY NO. 3169

MADRON SURVEYING, INC. 301 SOUTH CANAL (575) 234-3341 CARLSBAD, NEW MEXICO

**Lime Rock Resources II-A, L.P.
Drilling Plan**

HOBBS OCD

MAY 03 2016

RECEIVED

**Simpson 15B #4
230' FNL 1660' FEL
(B) 15-18S-26E
Eddy County, NM**

1. The elevation of the unprepared ground is 3335.5 feet above sea level.
2. The geologic name of the surface formation is Quaternary – Alluvium.
3. A rotary rig will be utilized to drill the well to 4000' and run casing. This equipment will be rigged down and the well will be completed with a workover rig.
4. Well will be drilled to a total proposed depth of 4000' MD.

5. Estimated tops of geologic markers:

	MD	TVD
Quaternary – Alluvium	Surface	Surface
Yates	NA	NA
7 Rivers	NA	NA
Queen	260	260
Grayburg	637	637
Premier	906	906
San Andres	946	946
Glorieta	2305	2305
Yeso	2395	2395
Tubb	3808	3808
TD	4000	4000

6. Estimated depths at which anticipated oil, gas, or other mineral bearing formations are expected to be encountered:

	MD	TVD
Yates	NA	NA
7 Rivers	NA	NA
Queen	260	260
Grayburg	637	637
Premier	906	906
San Andres	946	946
Glorieta	2305	2305
Yeso	2395	2395
Tubb	3808	3808
TD	4000	4000

7. Proposed Casing and Cement program is as follows:

Type	Hole	Casing	Wt	Grade	Thread	Depth	Sx	Density	Yield	Components
Conductor	26"	20"	91.5	B	Welded	80	80			Ready Mix
Surface	12-1/4"	8-5/8"	24	J-55	ST&C	425	350	14.8	1.35	Cl C Cmt + 0.25 lbs/sk Cello Flake + 2% CaCl ₂
Intermediate										
Production	7-7/8"	5-1/2"	17	J-55	LT&C	4000	200	12.8	1.903	(35-65) Poz/Cl C Cmt + 5% NaCl + 0.25 lbs/sk Cello Flake + 5 lbs/sk LCM-1 + 0.2% R-3 + 6% Gel
							600	14.8	1.33	Cl H w/ 0.6% R-3, 0.125% Cello Flake, 2% Gel

8. Proposed Mud Program is as follows

Depth	0-425	425-3850	3850-4000
Mud Type	Fresh Water Mud	Brine	Brine, Salt Gel, & Starch
Properties			
MW	8.4-9.2	9.8-10.1	9.9-10.1
pH	9.0-10.5	10.0-12.0	10.0-12.0
WL	NC	NC	20-30
Vis	28-34	28-29	32-34
MC	NC	NC	<2
Solids	NC	<2%	<3%
Pump Rate	300-500 gpm	375-425 gpm	400-425 gpm
Special		Use Poymers sticks and MF-55 Hi-Vis Sweeps as necessary	Hi Vis Sweeps, add acid and starch as req. Raise Vis to 35 for log.

9. Pressure Control Equipment: See Attached Description and diagram of Pressure Control Equipment.

10. Testing, Logging and Coring Program

Testing Program: No drill stem tests are anticipated

Electric Logging Program: SGR-DLL-CDL-CNL Quad Combo from 4000 to surf. Csg. SGR-CNL to Surf.

Coring Program: No full or sidewall cores are anticipated.

11. Potential Hazards:

No abnormal temperatures or pressures are expected. There is no known presence of H₂S in this area. If H₂S is encountered the operator will comply with the provisions of Onshore Oil and Gas Order No. 6. All personnel will be familiar with all aspects of safe operation of equipment being used to drill this well. Estimated BHP 1760 psi based on 0.44 x TD. The estimated BHT is 125 degrees F.

12. Duration of Operations:

Anticipated spud date will be soon after approval and as soon as a rig will be available. Move in operations and drilling is expected to take 10 days. An additional 14 days will be needed to complete the well and to construct surface facilities.

Hydrogen Sulfide Drilling Plan Summary

- A. All personnel shall receive proper H₂S training in accordance with Onshore Order 6 III.C.3.a.
- B. Briefing Area: two perpendicular areas will be designated by signs and readily accessible.
- C. Required Emergency Equipment:

- Well control equipment
 - a. Flare line 150' from wellhead to be ignited by flare gun.
 - b. Choke manifold with a remotely operated choke.
 - c. Mud/gas separator

- Protective equipment for essential personnel.

Breathing apparatus:

- a. Rescue Packs (SCBA) — 1 unit shall be placed at each breathing area, 2 shall be stored in the safety trailer.
- b. Work/Escapes packs — 4 packs shall be stored on the rig floor and contain sufficiently long air hoses as to not restrict work activity.
- c. Emergency Escape Packs — 4 packs shall be stored in the doghouse for emergency evacuation.

Auxiliary Rescue Equipment:

- a. Stretcher
- b. Two OSHA full body harness
- c. 100 ft 5/8 inch OSHA approved rope
- d. 1-20# class ABC fire extinguisher

- H₂S detection and monitoring equipment:

The stationary detector with three sensors will be placed in the upper dog house if equipped, set to visually alarm @ 10 ppm and audible @ 14 ppm. Calibrate a minimum of every 30 days or as needed. The sensors will be placed in the following places: Rig floor / Bell nipple / End of flow line or where well bore fluid is being discharged.
(Gas sample tubes will be stored in the safety trailer)

- Visual warning systems:

- a. One color code condition sign will be placed at the entrance to the site reflecting the possible conditions at the site.
- b. A colored condition flag will be on display, reflecting the current condition at the site at the time.
- c. Two wind socks will be placed in strategic locations, visible from all angles.

- Mud program:

The mud program has been designed to minimize the volume of H₂S circulated to surface. The operator will have the necessary mud products to minimize hazards while drilling in H₂S bearing zones.

■ Metallurgy:

- a. All drill strings, casings, tubing, wellhead, blowout preventer, drilling spool, kill lines, choke manifold and lines, and valves shall be suitable for H₂S service.
- b. All elastomers used for packing and seals shall be H₂S trim.

■ Communication:

Communication will be via two way radio in emergency and company vehicles. Cell phones and land lines where available.

H2S CONTINGENCY DRILLING PLAN EMERGENCY CONTACTS

Company Offices -	713-292-9510
Lime Rock Houston Office	
Answering Service (After Hours)	713-292-9555
Artesia, NM Office	575-748-9724
Roswell, NM	575-623-8424

KEY PERSONNEL

Name	Title	Location	Office #	Cell #	Home #
Mike Loudermilk	Operations Manager	Houston	713-292-9526	832-331-7367	Same as Cell
Spencer Cox	Operations Engineer	Houston	713-292-9528	432-254-5140	Same as Cell
Eric McClusky	Operations Engineer	Houston	713-360-5714	405-821-0534	832-491-3079
Jerry Smith	Assistant Production Supervisor	Artesia	575-748-9724	505-918-0556	575-746-2478
Michael Barrett	Production Supervisor	Roswell	575-623-8424	505-353-2644	575-623-4707
Gary McClland	Well Site Supervisor	Rotates on Site	NA	903-503-8997	NA
Dave Williamson	Well Site Supervisor	Rotates on Site	NA	575-308-9980	NA

Agency Call List		
City	Agency or Office	Telephone #
Artesia	Ambulance	911
Artesia	State Police	575-746-2703
Artesia	Sherriff's Office	575-746-9888
Artesia	City Police	575-746-2703
Artesia	Fire Department	575-746-2701
Artesia	Local Emergency Planning Committee	575-746-2122
Artesia	New Mexico OCD District II	575-748-1283
Carlsbad	Ambulance	911
Carlsbad	State Police	575-885-3137
Carlsbad	Sherriff's Office	575-887-7551
Carlsbad	City Police	575-885-2111
Carlsbad	Fire Department	575-885-2111
Carlsbad	Local Emergency Planning Committee	575-887-3798
Carlsbad	US DOI Bureau of Land Management	575-887-6544
State Wide	New Mexico Emergency Response Commisssion ("NMERC")	505-476-9600
State Wide	NMERC 24 Hour Number	505-827-9126
State Wide	New Mexico State Emergency Operations Center	505-476-9635
National	National Emergency Response Center (Washington D.C.)	800-424-8802

Emergency Services				
Name	Service	Location	Telephone Number	Alternate Number
Boots & Coots International Well Control	Well Control	Houston / Odessa	1-800-256-9688	281-931-8884
Cudd Pressure Control	Well Control/Pumping	Odessa	915-699-0139	915-563-3356
Baker Hughes Inc.	Pumping Services	Artesia, Hobbs & Odessa	575-746-2757	Same
Total Safety	Safety Equipment & Personnel	Artesia	575-746-2847	Same
Cutter Oilfield Services	Drilling Systems Equipment	Midland	432-488-6707	Same
Safety Dog	Safety Equipment & Personnel	Artesia	575-748-5847	575-441-1370
Fighting for Life	Emergency Helicopter Evacuation	Lubbock	806-743-9911	Same
Aerocare	Emergency Helicopter Evacuation	Lubbock	806-747-8923	Same
Med Flight Air Ambulance	Emergency Helicopter Evacuation	Albuquerque	505-842-4433	Same
Artesia General Hospital	Emergency Medical Care	Artesia	575-748-3333	702 North 13th Street

Pressure Control Equipment

The blowout preventer equipment (BOP) will consist of a 5000 psi rated, "XLT" type, National VARCO double ram preventer that will be tested to a maximum pressure of 2000 psi. The unit will be hydraulically operated and the ram type preventer will be equipped with blind rams on top and drill pipe rams on bottom. The 2M BOP will be installed on the 8 5/8" surface casing and utilized continuously until total depth is reached. All casing strings will be tested as per Onshore Order #2. This also includes a thirty day (30) test, should the rig still be operating on the same well in thirty days.

Pipe rams will be operated and checked each 24 hour period and each time the drill pipe is out of the hole. These functional tests will be documented on the daily drilling logs.

The BOP equipment will consist of the following:

- Double ram with blind rams (top) and pipe rams (bottom),
- Drilling spool, or blowout preventer with 2 side outlets (choke side shall be a 2" minimum diameter, kill side will be at least 2 inch diameter),
- Kill line (2 inch minimum),
- A minimum of 2 choke line valves (2 inch minimum),
- 2 inch diameter choke line,
- 2 kill valves, one of which will be a check valve (2 inch minimum),
- 2 chokes, one of which will be capable of remote operation,
- Pressure gauge on choke manifold,
- Upper Kelly cock valve with handle available,
- Safety valve and subs to fit all drill string connections in use,
- All BOPE connections subjected to well pressure will be flanged, welded, or clamped,
- A Fill-up line above the uppermost preventer.

[illegible]

Lime Rock Resources II-A, L.P.

Simpson 15B #4

Unit B, S15-T18S-R26E, Eddy County, NM

Design: Closed Loop System with roll-off steel bins (pits)

CRI/HOBBS will supply (2) bins (100 bbl) volume, rails and transportation relating to the Close Loop System. Specification of the Closed Loop System is attached.

Contacts: Gary Wallace (432) 638-4076 Cell (575) 393-1079 Office

Scomi Oil Tool: Supervisor – Armando Soto (432) 553-7979 Hobbs, NM

Monitoring 24 Hour service

Equipment:

Centrifuges – Derrick Brand

Rig Shakers – Brandt Brand

D-watering Unit

Air pumps on location for immediate remediation process.

Layout of Close Loop System with bins, centrifuges and shakers attached.

Cuttings and associated liquids will be hauled to a State regulated third party disposal site (CRI or Controlled Recovery, Inc.). The disposal site permit is DFP = #R9166.

2- (250 bbl) tanks to hold fluid

2-CRI bins with track system

2-500 bbl frac tanks with fresh water

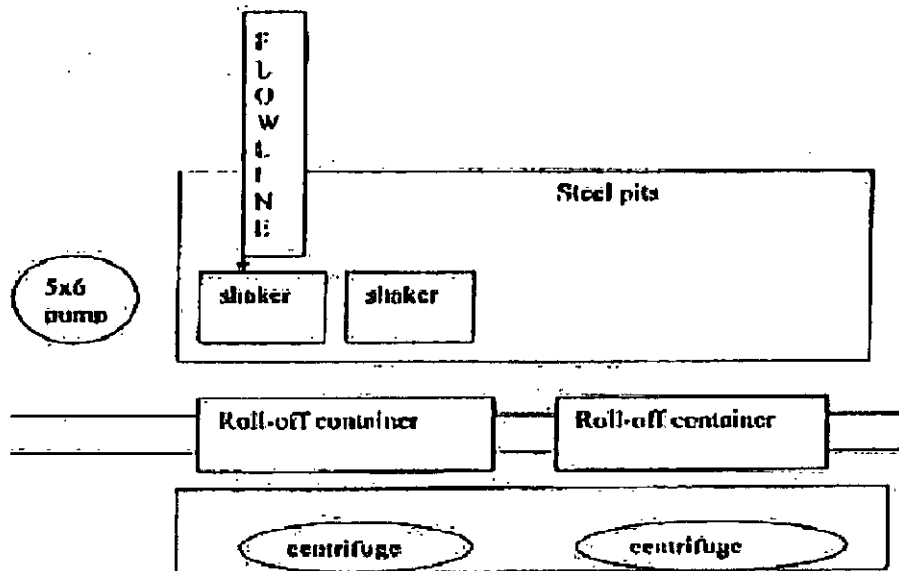
2-500 bbl frac tanks for brine water

Operations:

Closed Loop System equipment will be inspected daily by each tour and any necessary maintenance performed. leak in system will be repaired and/or contained immediately. OCD will be notified within 48 hours of any spill. Remediation process will start immediately.

Closure:

During drilling operations all liquids, drilling fluids and cuttings will be hauled off via CRI equipment to DFP #R9166.



This will be maintained by 24 hour solids control personnel that stay on location.

TOMMY WILSON




**CLOSED LOOP
SPECIALTY**

Office: 979.746.1689

Cell: 979.746.6367

Permit Conditions of Approval

API: 30-015-243299

OCD Reviewer	Condition
	Once the well is spud, to prevent ground water contamination through whole or partial conduits from the surface, the operator shall drill without interruption through the fresh water zone or zones and shall immediately set in cement the water protection string.

PLEASE NOTE THE FOLLOWING

Until Emergency Order 42 has been addressed, only three string casing programs will be permitted. Surface casing should be set at 450 feet with intermediate set between 750 – 1300 feet, dependent on first occurrence of oil. Hole size must be two inches greater than the outer diameter of the coupling.