

NM OIL CONSERVATION

ARTESIA DISTRICT

DISTRICT I
1625 N. FRENCH DR., HOBBS, NM 88240
Phone: (575) 393-6181 Fax: (575) 393-0720

DISTRICT II
811 S. FIRST ST., ARTESIA, NM 88210
Phone: (575) 746-1283 Fax: (575) 746-9720

DISTRICT III
1000 RIO BRAZOS RD., AZTEC, NM 87410
Phone: (505) 334-6178 Fax: (505) 334-6170

DISTRICT IV
1220 S. ST. FRANCIS DR., SANTA FE, NM 87505
Phone: (505) 478-3460 Fax: (505) 478-3462

State of New Mexico
Energy, Minerals & Natural Resources Department
OIL CONSERVATION DIVISION
1220 SOUTH ST. FRANCIS DR.
Santa Fe, New Mexico 87505

Form C-102
Revised August 1, 2011
Submit one copy to appropriate
District Office

☐ AMENDED REPORT

WELL LOCATION AND ACREAGE DEDICATION PLAT

API Number 30-015-42825	Pool Code 64010	Pool Name Welch; Bone Spring
Property Code 313961	Property Name SCREECH OWL FEDERAL	
OGRID No. 229137	Operator Name COG OPERATING, LLC	
		Well Number 1H
		Elevation 3352.5'

Surface Location

UL or lot No.	Section	Township	Range	Lot Idn	Feet from the	North/South line	Feet from the	East/West line	County
1	19	26-S	27-E		50	NORTH	660	WEST	EDDY

Bottom Hole Location If Different From Surface

UL or lot No.	Section	Township	Range	Lot Idn	Feet from the	North/South line	Feet from the	East/West line	County
4	30	26-S	27-E		341	SOUTH	715	WEST	EDDY

Dedicated Acres 320	Joint or Infill	Consolidation Code	Order No.
------------------------	-----------------	--------------------	-----------

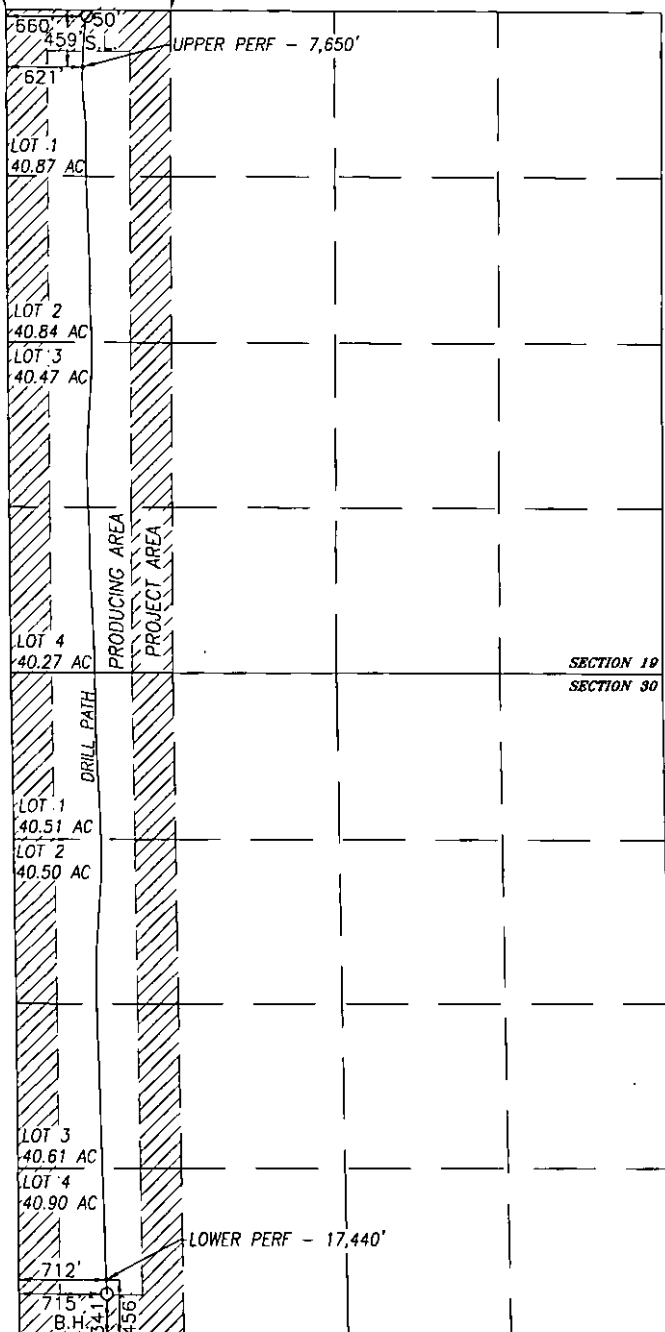
NO ALLOWABLE WILL BE ASSIGNED TO THIS COMPLETION UNTIL ALL INTERESTS HAVE BEEN CONSOLIDATED
OR A NON-STANDARD UNIT HAS BEEN APPROVED BY THE DIVISION

SEE PAGE 2

Property Code 313961	Property Name SCREECH OWL FEDERAL	Well Number 1H
OGRID No. 229137	Operator Name COG OPERATING, LLC	Elevation 3352.5'

Y=376500.5 N
X=529754.9 E

Y=376495.3 N
X=531087.9 E



NAD 27
SURFACE LOCATION

Y=376447.4 N
X=530415.4 E
LAT.=32.034930° N
LONG.=104.235180° W

NAD 27
BOTTOM
HOLE LOCATION
Y=366150.3 N
X=530581.6 E
LAT.=32.006622° N
LONG.=104.234674° W

BOREPATH SHOWN HEREON IS BASED ON
DIRECTIONAL SURVEY REPORT PROVIDED BY
COG OPERATING FOR THE SCREECH OWL
FEDERAL #1H SUPPLIED TO HARCROW
SURVEYING, LLC ON JUNE 10, 2016

1500 0 1500
SCALE: 1"=1500'

OPERATOR CERTIFICATION

I hereby certify that the information herein is true and complete to the best of my knowledge and belief, and that this organization either owns a working interest or unleased mineral interest in the land including the proposed bottom hole location or has a right to drill this well at this location pursuant to a contract with an owner of such mineral or working interest, or to a voluntary pooling agreement or a compulsory pooling order heretofore entered by the division.

Signature: *Stormi Davis* Date: 6/15/16

Printed Name

sdavis@concho.com

E-mail Address

SURVEYOR CERTIFICATION

I hereby certify that the well location shown on this plat was plotted from field notes of actual surveys made by me or under my supervision, and that the same is true and correct to the best of my belief.

AUG 28, 2013/JUNE 2016

Date of Survey/Date of Geographic Survey

Signature & Seal of Professional Surveyor



Signature: *Chad Harcrow* Date: 6/14/16
Certificate No. CHAD HARCROW 17777