

AUG 04 2016

Revised July 18, 2013

Submit 1 Copy To Appropriate District Office  
 District I - (575) 393-6161  
 1625 N. French Dr., Hobbs, NM 88240  
 District II - (575) 748-1283  
 811 S. First St., Artesia, NM 88210  
 District III - (505) 334-6178  
 1000 Rio Brazos Rd., Aztec, NM 87410  
 District IV - (505) 476-3460  
 1220 S. St. Francis Dr., Santa Fe, NM 87505

State of New Mexico  
 Energy, Minerals and Natural Resources  
**RECEIVED**  
 OIL CONSERVATION DIVISION  
 1220 South St. Francis Dr.  
 Santa Fe, NM 87505

WELL API NO. 30-015-28982
5. Indicate Type of Lease STATE <input type="checkbox"/> FEE <input checked="" type="checkbox"/>
6. State Oil & Gas Lease No.
7. Lease Name or Unit Agreement Name Patrick API
8. Well Number 4
9. OGRID Number 025575
10. Pool name or Wildcat Dagger Draw; Upper Penn, North

SUNDRY NOTICES AND REPORTS ON WELLS (DO NOT USE THIS FORM FOR PROPOSALS TO DRILL OR TO DEEPEN OR PLUG BACK TO A DIFFERENT RESERVOIR. USE "APPLICATION FOR PERMIT" (FORM C-101) FOR SUCH PROPOSALS.) 1. Type of Well: Oil Well <input checked="" type="checkbox"/> Gas Well <input type="checkbox"/> Other <input type="checkbox"/>	
2. Name of Operator Yates Petroleum Corporation	
3. Address of Operator 105 South Fourth Street, Artesia, NM 88210	
4. Well Location Unit Letter <u>E</u> : <u>2080</u> feet from the <u>North</u> line and <u>660</u> feet from the <u>West</u> line Section <u>10</u> Township <u>19S</u> Range <u>25E</u> NMPM <u>Eddy</u> County	
11. Elevation (Show whether DR, RKB, RT, GR, etc.) 3495'GR	

## 12. Check Appropriate Box to Indicate Nature of Notice, Report or Other Data

## NOTICE OF INTENTION TO:

PERFORM REMEDIAL WORK ☐ PLUG AND ABANDON ☒  
 TEMPORARILY ABANDON ☐ CHANGE PLANS ☐  
 PULL OR ALTER CASING ☐ MULTIPLE COMPL ☐  
 DOWNHOLE COMMINGLE ☐  
 CLOSED-LOOP SYSTEM ☐  
 OTHER: ☐

## SUBSEQUENT REPORT OF:

REMEDIAL WORK ☐ ALTERING CASING ☐  
 COMMENCE DRILLING OPNS. ☐ P AND A ☐  
 CASING/CEMENT JOB ☐  
 OTHER: ☐

13. Describe proposed or completed operations. (Clearly state all pertinent details, and give pertinent dates, including estimated date of starting any proposed work). SEE RULE 19.15.7.14 NMAC. For Multiple Completions: Attach wellbore diagram of proposed completion or recompletion.

Yates Petroleum Corporation plans to plug and abandon this well as follows:

1. MIRU all safety equipment as needed. NU BOP. No casing recovery will be attempted.
2. Run a GR and set a CIBP at 7684' and cap it with 25 sx Class "H" cement. This will place a plug over Canyon perfs. - WOC & TAG
3. Load hole with plugging mud. Spot a 40 sx Class "H" cement plug from 6854'-7054'. WOC and tag. This will leave a plug across stage tool.
4. Load hole with plugging mud. Spot a 35 sx Class "C" cement plug from 5427'-5627', this will leave a plug across Wolfcamp top.
5. Load hole with plugging mud. Spot a 35 sx Class "C" cement plug from 3586'-3786', this will leave a plug across Bone Spring top.
6. Load hole with plugging mud. Spot a 35 sx Class "C" cement plug from 2081'-2281', this will leave a plug across Glorieta top.
7. Load hole with plugging mud. Spot a 70 sx Class "C" cement plug from 815'-1215', this will leave a plug across surface casing shoe. - WOC & TAG
8. Spot a 55 sx Class "C" cement plug from 300' up to surface. This will form the surface plug. WOC and tag plug.
9. Cut off wellhead, install dry hole marker and clean location.

Wellbore schematics attached

Spud Date:

Rig Release Date:

Approved for plugging of well bore only.  
 Liability under bond is retained pending receipt  
 of C.103 (Subsequent Report of Well Plugging)  
 which may be found at OCD Web Page under  
 Forms, [www.cmrnd.state.nm.us/ocd](http://www.cmrnd.state.nm.us/ocd).

**WELL MUST BE PLUGGED BY 8/4/2017**

I hereby certify that the information above is true and complete to the best of my knowledge and belief.

SIGNATURE Tina Huerta TITLE Regulatory Reporting Supervisor DATE August 2, 2016

Type or print name Tina Huerta E-mail address: tinah@yatespetroleum.com PHONE: 575-748-4168  
 For State Use Only

APPROVED BY: Robert J. Byrd TITLE COMPLIANCE OFFICER DATE 8/4/2016

Conditions of Approval (if any):

**\* SEE ATTACHED COA - S**

WELL NAME: PATRICK API No. 4 FIELD: Dagger Draw  
 LOCATION: Unit letter E, 2080' FNL & 660' FWL of Section 10-19S-25E Eddy Co., NM  
 GL: 3495' ZERO: 13' KB: 3508'  
 SPUD DATE: 6/30/96 COMPLETION DATE: 7/31/96  
 COMMENTS: API No.: 30-015-28982

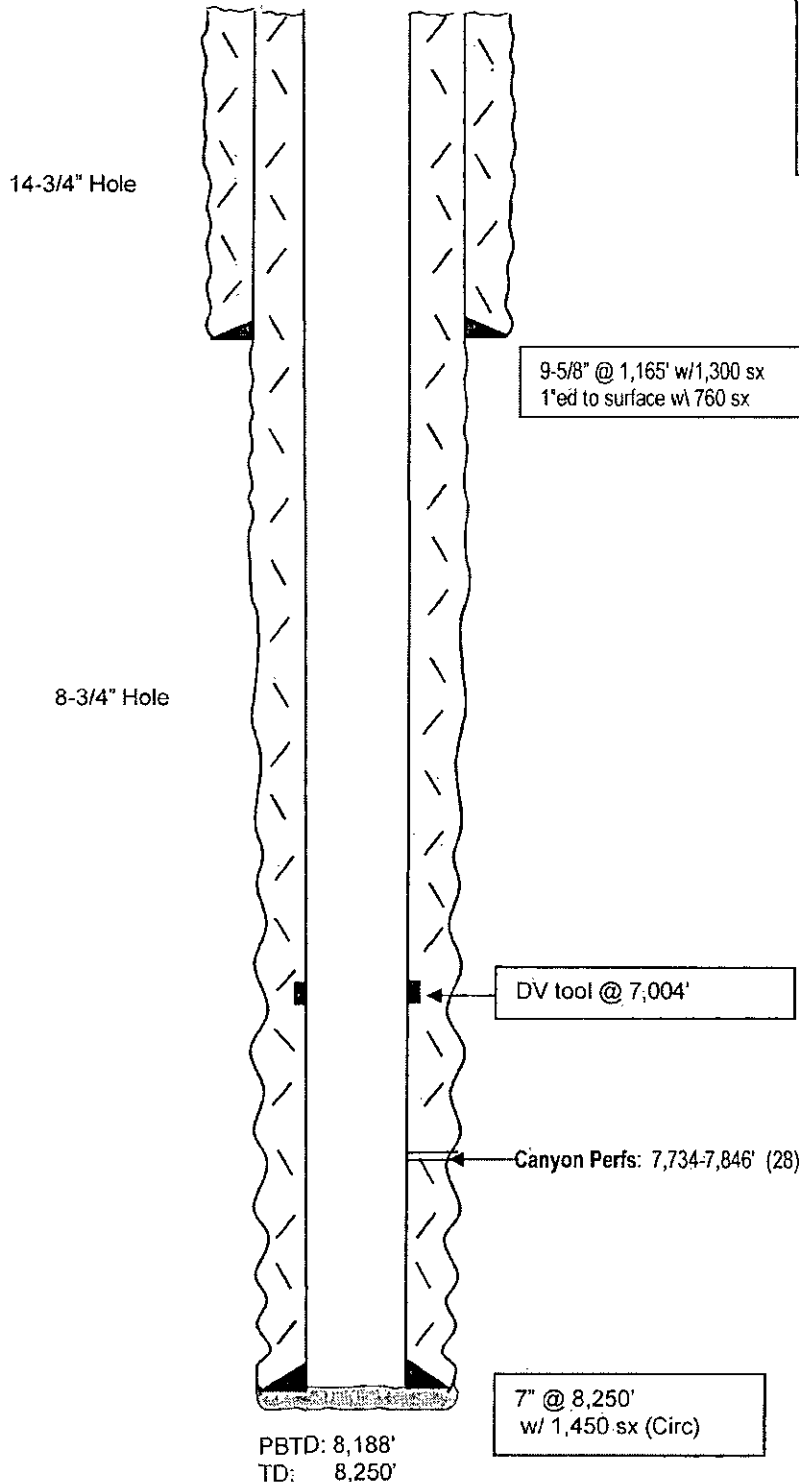
# CASING PROGRAM

9-5/8" 36# J55 STC		<b>1,165'</b>
Surface		
7" 26# J55	1,025'	
7" 23# J55	4,363'	
7" 26# J55	1,977'	
7" 26# J55	885'	<b>8,250'</b>
Bottom		

**Before**

## TOPS

SA 788'  
 Glorieta 2,231'  
 Bone Spring 3,736'  
 Wolfcamp 5,577'  
 Canyon 7,620'



Not to Scale  
 5/20/14  
 JMH

WELL NAME: PATRICK API No. 4

FIELD: Dagger Draw

LOCATION: Unit letter E, 2080' FNL & 660' FWL of Section 10-19S-25E Eddy Co., NM

GL: 3495' ZERO: 13' KB: 3508'

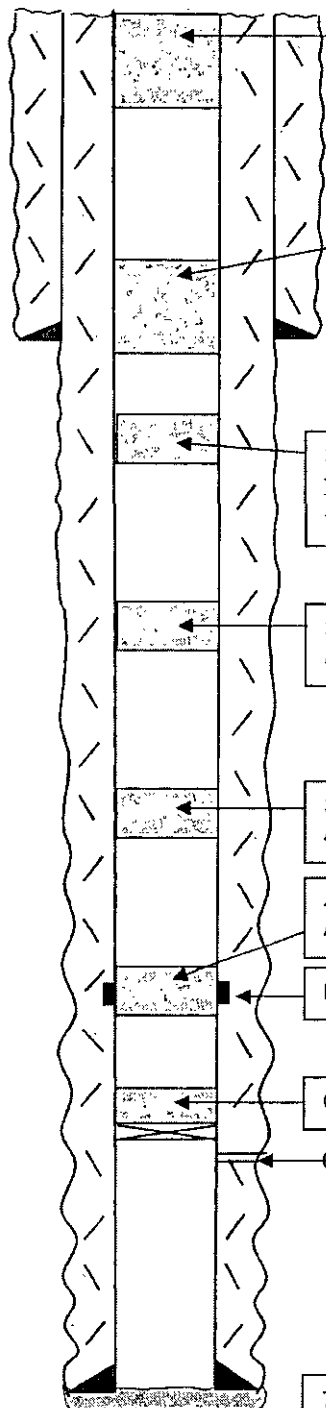
SPUD DATE: 6/30/96 COMPLETION DATE: 7/31/96

COMMENTS: API No.: 30-015-28982

# CASING PROGRAM

9-5/8" 36# J55 STC	1,165'
Surface	
7" 26# J55	1,025'
7" 23# J55	4,363'
7" 26# J55	1,977'
7" 26# J55	885'
Bottom	8,250'

14-3/4" Hole.



55sx Class "C" plug  
from 0' - 300'  
Surface plug.

70sx Class "C" plug  
from 815' - 1,215'  
Across CSG shoe.

9-5/8" @ 1,165' w/1,300 sx  
1"ed to surface w/ 760 sx

35sx Class "C" plug  
from 2,081' - 2,281'  
Across Glorieta Top

35sx Class "C" plug from 3,586' - 3,786'  
Across Bone Springs Top

35sx Class "C" plug from 5,427' - 5,627'  
Across Wolfcamp Top

40sx Class "H" plug from 6,854' - 7,054'  
Across Stage Tool

DV tool @ 7,004'

CIBP @ 7,684' w/ 25 sx Class "H" cement

Canyon Perfs: 7,734-7,846' (28)

7" @ 8,250'  
w/ 1,450 sx (Circ)

PBTD: 8,188'  
TD: 8,250'

**After**

## TOPS

SA 788'  
Glorieta 2,231'  
Bone Spring 3,736'  
Wolfcamp 5,577'  
Canyon 7,620'

- woe & TAC

woe & TAC

Not to Scale  
7/5/16  
JMH

## CONDITIONS FOR PLUGGING AND ABANDONMENT

### District II / Artesia N.M.

The following is a guide or checklist in preparation of a plugging program, this is not all inclusive and care must be exercised in establishing special plugging programs in unique and unusual cases, **Notify NMOCD District Office II at (575)-748-1283 at least 24 hours before beginning work.**

1. A notice of intent to plug and abandon a wellbore is required to be approved before plugging operations are conducted. A cement evaluation tool is required in order to ensure isolation of producing formations, protection of water and correlative rights. A cement bond log or other accepted cement evaluation tool is to be provided to the division for evaluation if one has not been previously run or if the well did not have cement circulated to surface during the original casing cementing job or subsequent cementing jobs.
2. Closed loop system is to be used for entire plugging operation. Upon completion, contents of steel pits are to be hauled to a permitted disposal location.
3. Trucking companies being used to haul oilfield waste fluids to a disposal – commercial or private – shall have an approved NMOCD C-133 permit. A copy of this permit shall be available in each truck used to haul waste products. It is the responsibility of the operator as well as the contractor, to verify that this permit is in place prior to performing work. Drivers shall be able to produce a copy upon request of an NMOCD Field inspector.
4. Filing a subsequent C-103 will serve as notification that the well has been plugged.
5. A final C-103 shall be filed (and a site inspection by NMOCD Inspector to determine if the location is satisfactorily cleaned, all equipment, electric poles and trash has been removed to Meet NMOCD standards) before bonding can be released.
6. **Squeeze pressures are not to exceed 500 psi, unless approval is given by NMOCD.**
7. Produced water **will not** be used during any part of the plugging operation.
8. Mud laden fluids must be placed between all cement plugs mixed at 25 sacks per 100 bbls of water.
9. All cement plugs will be a minimum of 100' in length or a minimum of 25 sacks of cement, whichever is greater. 50' of calculated cement excess required for inside casing plugs and 100% calculated cement excess required on outside casing plugs.
10. **Class 'C' cement will be used above 7500 feet.**
11. **Class 'H' cement will be used below 7500 feet.**
12. **A cement plug is required to be set 50' above and 50' below, , all casing shoes, casing stubs, DV tools, attempted casing cut offs, salt sections and anywhere the casing is perforated, these plugs require a 4 hour WOC and then will be tagged**
13. When setting the top out cement plug in production, intermediate and surface casing, wellbores should remain full at least 30 minutes after plugs are set
14. **A CIBP is to be set within 100' of production perforations, capped with 100' of cement, WOC 4 hours and tag.**
15. A CIBP with 35' of cement may be used in lieu of the 100' plug if set with a bailer. This plug will be placed within 100' of the top perforation, **(WOC 4 hrs and tag).**
16. **No more than 3000' is allowed between cement plugs in cased hole and 2000' in open hole.**

17. Formations to be isolated with cement plugs are:

- A) Fusselman
- B) Devonian
- C) Morrow
- D) Wolfcamp
- E) Bone Springs
- F) Delaware
- G) Any salt sections
- H) Abo
- I) Glorieta
- J) Yates.

K) **Potash---** (In the R-111-P Area (Potash Mine Area), a solid cement plug must be set across the salt section. Fluid used to mix the cement shall be saturated with the salts that are common to the section penetrated and in suitable proportions, not more than 3% calcium chloride (by weight of cement) will be considered the desired mixture whenever possible, **WOC 4 hours and tag, this plug will be 50' below the bottom and 50' above the top of the Formation.**

18. If cement does not exist behind casing strings at recommended formation depths, the casing can be cut and pulled with plugs set at recommended depths. If casing is not pulled, perforations will be shot and cement squeezed behind casing, and cement will be set 50' below formation bottom to 50' above formation top inside the casing

#### **DRY HOLE MARKER REQUIREMENTS**

The operator shall mark the exact location of the plugged and abandoned well with a steel marker not less than four inches in diameter, 3' below ground level with a plate of at least ¼" welded to the top of the casing and the dry hole marker welded on the plate with the following information welded on the dry hole marker:

1. Operator name
2. Lease and well number
3. API number
4. Unit letter
5. Quarter section (feet from North, South, East or West)
6. Section, Township and Range
7. Plugging date
8. County

#### **(SPECIAL CASES)**

##### **AGRICULTURE OR PRARIE CHICKEN BREEDING AREAS**

In these areas, a below ground marker is required with all pertinent information mentioned above on a plate, set 3' below ground level, a picture of the plate will be supplied to NMOCD for record, the exact location of the marker (longitude and latitude by GPS) will be provided to NMOCD (We typically require a current survey to verify the GPS)