

NM OIL CONSERVATION
ARTESIA DISTRICT

DISTRICT I
1625 N. French Dr., Hobbs, NM 88240
Phone: (575) 393-6161 Fax: (575) 393-0720

DISTRICT II
811 S. First St., Artesia, NM 88210
Phone: (575) 748-1283 Fax: (575) 748-9720

DISTRICT III
1000 Rio Brazos Road, Aztec, NM 87410
Phone: (505) 334-6178 Fax: (505) 334-6170

DISTRICT IV
1220 S. St. Francis Dr., Santa Fe, NM 87505
Phone: (505) 476-3460 Fax: (505) 476-3462

State of New Mexico
Energy, Minerals & Natural Resources Department
OIL CONSERVATION DIVISION
1220 South St. Francis Dr.
Santa Fe, New Mexico 87505

SEP 02 2016
RECEIVED

Form C-102
Revised August 1, 2011
Submit one copy to appropriate
District Office

AMENDED REPORT

WELL LOCATION AND ACREAGE DEDICATION PLAT

API Number 30-015-43443	Pool Code 96831	Pool Name Cedar Lake, Glorieta-Yeso
Property Code 315935	Property Name Cedar Lake Federal CA	Well Number 6 46H
OGRID No. 873	Operator Name APACHE CORPORATION	Elevation 3759'

Surface Location

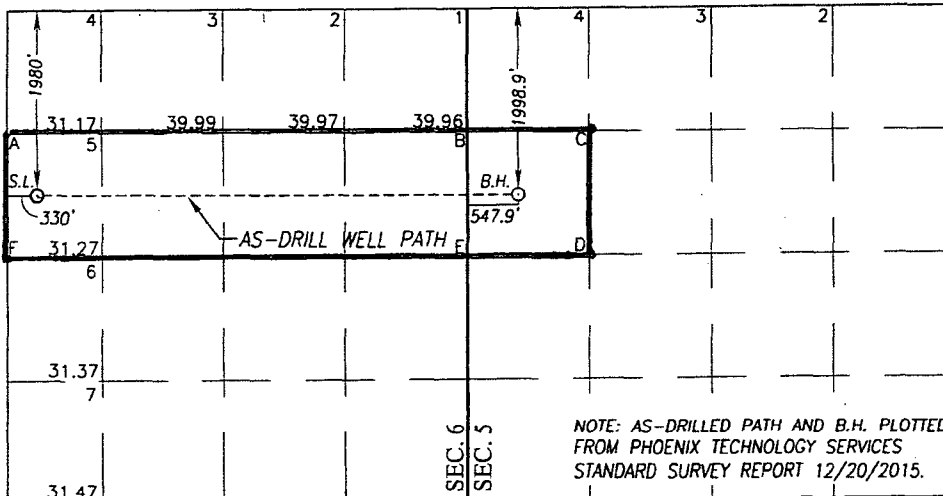
UL or lot No.	Section	Township	Range	Lot Idn	Feet from the	North/South line	Feet from the	East/West line	County
5	6	17-S	31-E		1980	NORTH	330	WEST	EDDY

As-Drilled Bottom Hole Location If Different From Surface

UL or lot No.	Section	Township	Range	Lot Idn	Feet from the	North/South line	Feet from the	East/West line	County
E	5	17-S	31-E		1998.9	NORTH	547.9	WEST	EDDY

Dedicated Acres 151.27	Joint or Infill	Consolidation Code	Order No.
----------------------------------	-----------------	--------------------	-----------

NO ALLOWABLE WILL BE ASSIGNED TO THIS COMPLETION UNTIL ALL INTERESTS HAVE BEEN CONSOLIDATED OR A NON-STANDARD UNIT HAS BEEN APPROVED BY THE DIVISION



SCALE: 1"=2000'

GEODETIC COORDINATES
NAD 27 NME
SURFACE LOCATION
Y=678722.9 N
X=628390.6 E
LAT.=32.865193° N
LONG.=103.915191° W
LAT.=32° 51' 55" N
LONG.=103° 54' 56" W

CORNER COORDINATES TABLE
NAD 27 NME

A - Y=679380.9 N, X=628058.7 E
B - Y=679414.4 N, X=633048.7 E
C - Y=679423.9 N, X=634368.4 E
D - Y=678104.1 N, X=634375.9 E
E - Y=678094.7 N, X=633056.1 E
F - Y=678061.7 N, X=628062.7 E

GEODETIC COORDINATES
NAD 83 NME
SURFACE LOCATION
Y=678787.0 N
X=669569.3 E
LAT.=32.865310° N
LONG.=103.915698° W
LAT.=32° 51' 55" N
LONG.=103° 54' 57" W

CORNER COORDINATES TABLE
NAD 83 NME

A - Y=679444.9 N, X=669237.4 E
B - Y=679478.5 N, X=674227.3 E
C - Y=679488.0 N, X=675547.0 E
D - Y=678168.2 N, X=675554.5 E
E - Y=678158.7 N, X=674234.7 E
F - Y=678125.6 N, X=669241.4 E

GEODETIC COORDINATES
NAD 27 NME
BOTTOM HOLE LOCATION
Y=678739.5 N
X=633600.2 E
LAT.=32.865181° N
LONG.=103.898224° W
LAT.=32° 51' 55" N
LONG.=103° 53' 54" W

GEODETIC COORDINATES
NAD 83 NME
BOTTOM HOLE LOCATION
Y=678803.6 N
X=674778.9 E
LAT.=32.865298° N
LONG.=103.898731° W
LAT.=32° 51' 55" N
LONG.=103° 53' 55" W

OPERATOR CERTIFICATION

I hereby certify that the information herein is true and complete to the best of my knowledge and belief, and that this organization either owns a working interest or unleased mineral interest in the land including the proposed bottom hole location or has a right to drill this well at this location pursuant to a contract with an owner of such mineral or working interest, or to a voluntary pooling agreement or a compulsory pooling order heretofore entered by the division.

Signature *Emily Follis* Date *8/31/16*
Printed Name *Emily Follis*
E-mail Address *emily.follis@apachecorp.com*

SURVEYOR CERTIFICATION

I hereby certify that the well location shown on this plat was plotted from field notes of actual surveys made by me or under my supervision, and that the same is true and correct to the best of my belief.

JANUARY 6, 2015

Date of Survey
Signature & Seal of Professional Surveyor:

RONALD J. EIDSON
NEW MEXICO
REGISTERED SURVEYOR
3239
1/16/2016
Certificate Number SS4 Gary G. Eidson 12641
Ronald J. Eidson 3239

ACK. REL W.O.: 15.13.1060 JWSC W.O.: 16.13.0017