

# NM OIL CONSERVATION

District I  
1625 N. French Dr., Hobbs, NM 88240  
Phone: (575) 393-6161 Fax: (575) 393-0720  
District II  
811 S. First St., Artesia, NM 88210  
Phone: (575) 748-1283 Fax: (575) 748-9720  
District III  
1000 Rio Brazos Road, Aztec, NM 87410  
Phone: (505) 334-6178 Fax: (505) 334-6170  
District IV  
1220 S. St. Francis Dr., Sante Fe, NM 87505  
Phone: (505) 476-3460 Fax: (505) 476-3462

State of New Mexico  
Energy, Minerals & Natural Resources  
Department  
OIL CONSERVATION DIVISION  
1220 South St. Francis Dr.  
Sante Fe, NM 87505

ARTESIA DISTRICT

FORM C-102

Revised August 1, 2011

Submit one copy to appropriate

District Office

RECEIVED

☐ AMENDED REPORT

## WELL LOCATION AND ACREAGE DEDICATION PLAT

<sup>1</sup> API Number <b>30-015-43505</b>	<sup>2</sup> Pool Code <b>75750</b>	<sup>3</sup> Pool Name <b>Culebra Bluff, Wolfcamp, South (Gas)</b>
<sup>4</sup> Property Code <b>313993</b>	<sup>5</sup> Property Name <b>TIGER 14-24S-28E RB</b>	
<sup>6</sup> Well Number <b>#227H</b>	<sup>7</sup> Elevation <b>2975'</b>	
<sup>8</sup> OGRID No. <b>228937</b>	<sup>9</sup> Operator Name <b>MATADOR PRODUCTION COMPANY</b>	

### <sup>10</sup>Surface Location

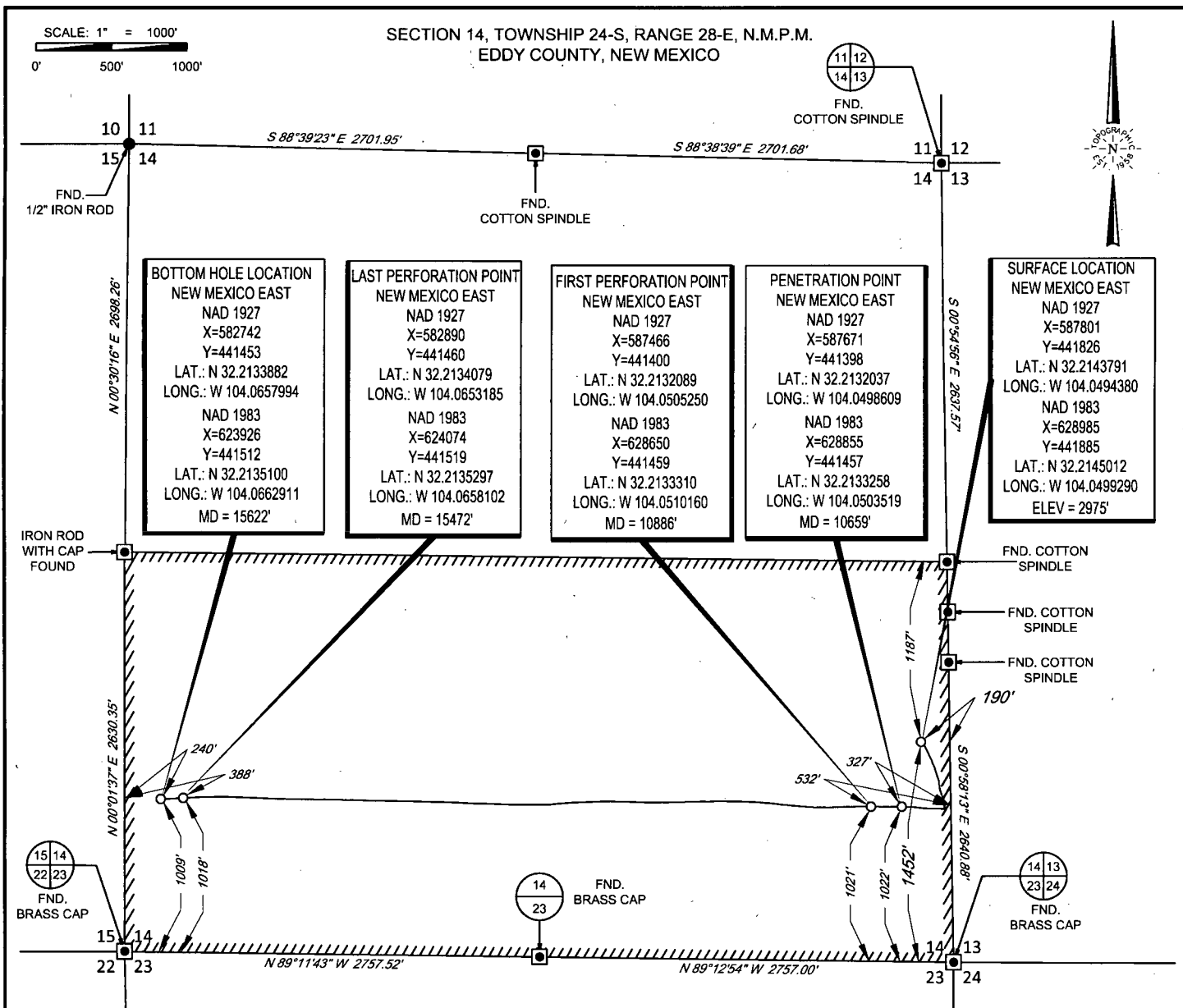
UL or lot no.	Section	Township	Range	Lot Idn	Feet from the	North/South line	Feet from the	East/West line	County
<b>I</b>	<b>14</b>	<b>24-S</b>	<b>28-E</b>	<b>-</b>	<b>1452'</b>	<b>SOUTH</b>	<b>190'</b>	<b>EAST</b>	<b>EDDY</b>

UL or lot no.	Section	Township	Range	Lot Idn	Feet from the	North/South line	Feet from the	East/West line	County
<b>M</b>	<b>14</b>	<b>24-S</b>	<b>28-E</b>	<b>-</b>	<b>1009'</b>	<b>SOUTH</b>	<b>240'</b>	<b>WEST</b>	<b>EDDY</b>

<sup>12</sup> Dedicated Acres <b>320</b>	<sup>13</sup> Joint or Infill	<sup>14</sup> Consolidation Code	<sup>15</sup> Order No.
---	-------------------------------	----------------------------------	-------------------------

No allowable will be assigned to this completion until all interests have been consolidated or a non-standard unit has been approved by the division.

<sup>16</sup> <div style="display: flex; justify-content: space-between;"> <div style="width: 45%;"> <p><b>BOTTOM HOLE LOCATION</b> NEW MEXICO EAST NAD 1927 X=582742 Y=441453 LAT.: N 32.2133882 LONG.: W 104.0657994 NAD 1983 X=623926 Y=441512 LAT.: N 32.2135100 LONG.: W 104.0662911 MD = 15622'</p> </div> <div style="width: 45%;"> <p><b>LAST PERFORATION POINT</b> NEW MEXICO EAST NAD 1927 X=582890 Y=441460 LAT.: N 32.2134079 LONG.: W 104.0653185 NAD 1983 X=624074 Y=441519 LAT.: N 32.2135297 LONG.: W 104.0658102 MD = 15472'</p> </div> </div>		<p><b>PENETRATION POINT</b> NEW MEXICO EAST NAD 1927 X=587671 Y=441398 LAT.: N 32.2132037 LONG.: W 104.0498609 NAD 1983 X=628855 Y=441457 LAT.: N 32.2133258 LONG.: W 104.0503519 MD = 10659'</p>		<p><b>SURFACE LOCATION</b> NEW MEXICO EAST NAD 1927 X=587801 Y=441826 LAT.: N 32.2143791 LONG.: W 104.0494380 NAD 1983 X=628985 Y=441885 LAT.: N 32.2145012 LONG.: W 104.0499290 ELEV = 2975'</p>	
<p><b>FIRST PERFORATION POINT</b> NEW MEXICO EAST NAD 1927 X=587466 Y=441400 LAT.: N 32.2132089 LONG.: W 104.0505250 NAD 1983 X=628650 Y=441459 LAT.: N 32.2133310 LONG.: W 104.0510160 MD = 10886'</p>		<p><b>17 OPERATOR CERTIFICATION</b> I hereby certify that the information contained herein is true and complete to the best of my knowledge and belief, and that this organization either owns a working interest or unless mineral interest in the land including the proposed bottom hole location or has a right to drill this well at this location pursuant to a contract with an owner of such a mineral or working interest, or to a voluntary pooling agreement or a compulsory pooling order heretofore entered by the division.</p> <p><i>Chris Carleton</i> 9/23/16 Signature Date <b>Chris Carleton</b> Printed Name <b>c.carleton@matadorresources.com</b> E-mail Address</p>			
<p><b>18 SURVEYOR CERTIFICATION</b> I hereby certify that the well location shown on this plat was plotted from field notes of actual surveys made by me or under my supervision, and that the same is true to the best of my belief.</p> <p>01/28/2016 Date of Survey <b>MICHAEL B. BROWN</b> Signature and Seal of Professional Surveyor <b>NEW MEXICO</b> <b>18329</b> Professional Surveyor Certificate Number</p>					



**TOPOGRAPHIC**  
LOYALTY INNOVATION. LEGACY

1400 EVERMAN PARKWAY, Ste. 197 • FT. WORTH, TEXAS 76140  
TELEPHONE: (817) 744-7512 • FAX (817) 744-7548  
2903 NORTH BIG SPRING • MIDLAND, TEXAS 79705  
TELEPHONE: (432) 682-1653 OR (800) 767-1653 • FAX (432) 682-1743  
WWW.TOPOGRAPHIC.COM

**MICHAEL B. BROWN**  
NEW MEXICO  
18329  
PROFESSIONAL SURVEYOR

Michael Blake Brown, P.S. No. 18329  
SEPTEMBER 23, 2016

TIGER 14-24S-28E RB #227H AS-COMPLETED	REVISION:	
	INT	DATE
DATE: 09/23/16		
FILE: AD_TIGER_14-24S-28E_RB_227H		
DRAWN BY: GJU		
SHEET: 1 OF 1		

NOTES:

1. ORIGINAL DOCUMENT SIZE: 8.5" X 11"
2. ALL BEARINGS, DISTANCES, AND COORDINATE VALUES CONTAINED HEREIN ARE GRID BASED UPON THE NEW MEXICO STATE PLANE COORDINATE SYSTEM, EAST ZONE, U.S. SURVEY FEET, NORTH AMERICAN DATUM 1927.
3. CERTIFICATION IS MADE ONLY TO THE LOCATION OF THIS EASEMENT, IN RELATION TO THE EVIDENCE FOUND DURING A FIELD SURVEY, MADE ON THE GROUND, UNDER MY SUPERVISION, AND USING DOCUMENTATION PROVIDED BY MATADOR PRODUCTION COMPANY. ONLY UTILITIES/EASEMENTS THAT WERE VISIBLE ON THE DATE OF THIS SURVEY, WITHIN/ADJOINING THIS EASEMENT, HAVE BEEN LOCATED AS SHOWN HEREON OF WHICH I HAVE KNOWLEDGE. THIS CERTIFICATION IS LIMITED TO THOSE PERSONS OR ENTITIES SHOWN ON THE FACE OF THIS PLAT AND IS NON-TRANSFERABLE, AND MADE FOR THIS TRANSACTION ONLY.