

15-940

OCD Artesia

Form 3160-3
(March 2012)

UNITED STATES
DEPARTMENT OF THE INTERIOR
BUREAU OF LAND MANAGEMENT

APPLICATION FOR PERMIT TO DRILL OR REENTER

FORM APPROVED
OMB No. 1004-0137
Expires October 31, 2014

5. Lease Serial No. **Nm 134867**
VB-1417

6. If Indian, Allottee or Tribe Name

7. If Unit or CA Agreement, Name and No.

8. Lease Name and Well No.
Hoss 2 W2PA Fed Com #1H

9. API Well No.
30-015-43947

10. Field and Pool, or Exploratory
Salt Draw Wolfcamp - 97721

11. Sec., T. R. M. or Blk. and Survey or Area
Sec. 2 T25S R28E

12. County or Parish
Eddy

13. State
NM

1a. Type of work: ☒ DRILL ☐ REENTER

1b. Type of Well: ☐ Oil Well ☒ Gas Well ☐ Other ☒ Single Zone ☐ Multiple Zone

2. Name of Operator **Mewbourne Oil Company**

3a. Address **PO Box 5270
Hobbs, NM 88241**

3b. Phone No. (include area code)
575-393-5905

4. Location of Well (Report location clearly and in accordance with any State requirements *)

At surface **185' FSL & 450' FEL, Sec 2 T25S R28E**

At proposed prod. zone **330' FNL & 450' FEL, Sec 2 T25S R28E**

14. Distance in miles and direction from nearest town or post office*
4.8 miles S of Malaga, NM

15. Distance from proposed* **185'**
location to nearest
property or lease line, ft.
(Also to nearest drig. unit line, if any)

16. No. of acres in lease
320

17. Spacing Unit dedicated to this well
320

18. Distance from proposed location* **80' - Hoss B2PA Fed**
to nearest well, drilling, completed,
applied for, on this lease, ft. **Com #1H**

19. Proposed Depth
**10,733' - TVD
15,209' - MD**

20. BLM/BIA Bond No. on file
NM1693 nationwide, NMB-000919

21. Elevations (Show whether DF, KDB, RT, GL, etc.)
2948' - GL

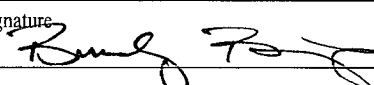
22. Approximate date work will start*
09/16/2015

23. Estimated duration
60 days

24. Attachments

The following, completed in accordance with the requirements of Onshore Oil and Gas Order No.1, must be attached to this form:

- | | |
|--|---|
| 1. Well plat certified by a registered surveyor. | 4. Bond to cover the operations unless covered by an existing bond on file (see Item 20 above). |
| 2. A Drilling Plan. | 5. Operator certification |
| 3. A Surface Use Plan (if the location is on National Forest System Lands, the SUPO must be filed with the appropriate Forest Service Office). | 6. Such other site specific information and/or plans as may be required by the BLM. |

25. Signature 

Name (Printed/Typed)
Bradley Bishop

Date
07/16/2015

Title

Approved by (Signature) **/s/Cody Layton**

Name (Printed/Typed)

Date **OCT 24 2016**

Title **FIELD MANAGER**

Office **CARLSBAD FIELD OFFICE**

Application approval does not warrant or certify that the applicant holds legal or equitable title to those rights in the subject lease which would entitle the applicant to conduct operations thereon.
Conditions of approval, if any, are attached.

APPROVAL FOR TWO YEARS

Title 18 U.S.C. Section 1001 and Title 43 U.S.C. Section 1212, make it a crime for any person knowingly and willfully to make to any department or agency of the United States any false, fictitious or fraudulent statements or representations as to any matter within its jurisdiction.

(Continued on page 2)

*(Instructions on page 2)

Carlsbad Controlled Water Basin

NM OIL CONSERVATION
ARTESIA DISTRICT

OCT 27 2016 SEE ATTACHED FOR
CONDITIONS OF APPROVAL
RECEIVED

Approval Subject to General Requirements
& Special Stipulations Attached

District I
1625 N. French Dr., Hobbs, NM 88240
Phone: (575) 393-6161 Fax: (575) 393-0720
District II
811 S. First St., Artesia, NM 88210
Phone: (575) 748-1283 Fax: (575) 748-9720
District III
1000 Rio Brazos Road, Aztec, NM 87410
Phone: (505) 334-6178 Fax: (505) 334-6170
District IV
1220 S. St. Francis Dr., Santa Fe, NM 87505
Phone: (505) 476-3460 Fax: (505) 476-3462

State of New Mexico
Energy, Minerals & Natural Resources Department
OIL CONSERVATION DIVISION
1220 South St. Francis Dr.
Santa Fe, NM 87505

Form C-102
Revised August 1, 2011
Submit one copy to appropriate
District Office

☐ AMENDED REPORT

WELL LOCATION AND ACREAGE DEDICATION PLAT

¹ API Number 30-015-43947	² Pool Code 97721	³ Pool Name W. SALT DRAW, WOLF CAMP (GAS)
⁴ Property Code 317065	⁵ Property Name HOSS 2 W2PA FED COM	
⁷ OGRID NO. 14744	⁸ Operator Name MEWBOURNE OIL COMPANY	⁶ Well Number 1H
		⁹ Elevation 2948'

¹⁰ Surface Location

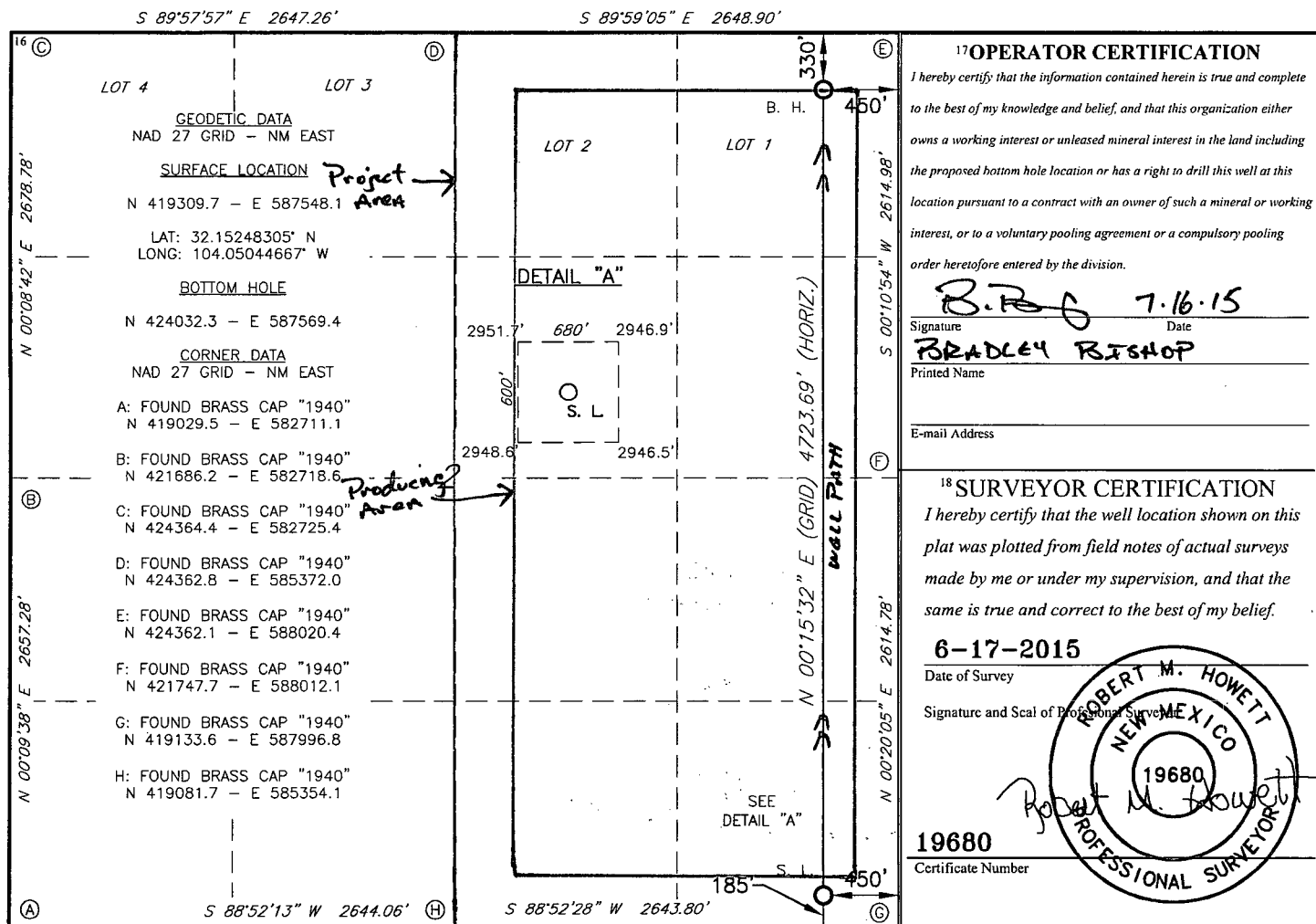
UL or lot no.	Section	Township	Range	Lot Idn	Feet from the	North/South line	Feet From the	East/West line	County
P	2	25S	28E		185	SOUTH	450	EAST	EDDY

¹¹ Bottom Hole Location If Different From Surface

UL or lot no.	Section	Township	Range	Lot Idn	Feet from the	North/South line	Feet from the	East/West line	County
1	2	25S	28E		330	NORTH	450	EAST	EDDY

¹² Dedicated Acres 320.51	¹³ Joint or Infill	¹⁴ Consolidation Code	¹⁵ Order No.
--	-------------------------------	----------------------------------	-------------------------

No allowable will be assigned to this completion until all interest have been consolidated or a non-standard unit has been approved by the division.



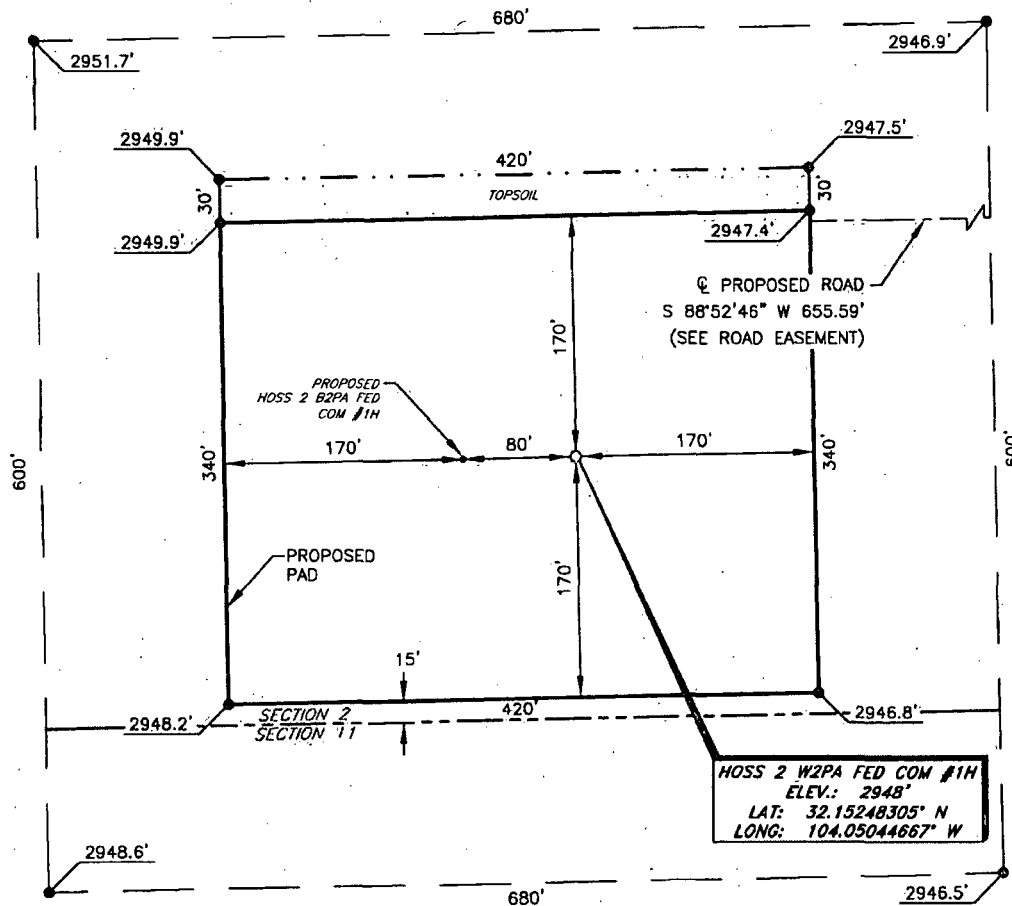
MEWBOURNE OIL COMPANY

HOSS 2 W2PA FED COM #1H

(185' FSL & 450' FEL)

SECTION 2, T25S, R28E

N. M. P. M., EDDY COUNTY, NEW MEXICO

**DIRECTIONS TO LOCATION**

From the intersection of US Hwy. 285 and CR-721 (Pulley Rd.)

Go South on US Hwy. 285 approx. 2.0 miles to a lease road on the left;

Turn left and go East approx. 1.3 miles to a lease road on the right;

Turn right and go South approx. 0.9 miles to a proposed road on the right;

Turn right and go West approx. 0.1 miles.

Location is on the left.

SCALE: 1" = 100'

0 50 100

BEARINGS ARE
NAD 27 GRID - NM EAST
DISTANCES ARE GROUND

Firm No.: TX 10193838 NM 4655451

Copyright 2014 - All Rights Reserved

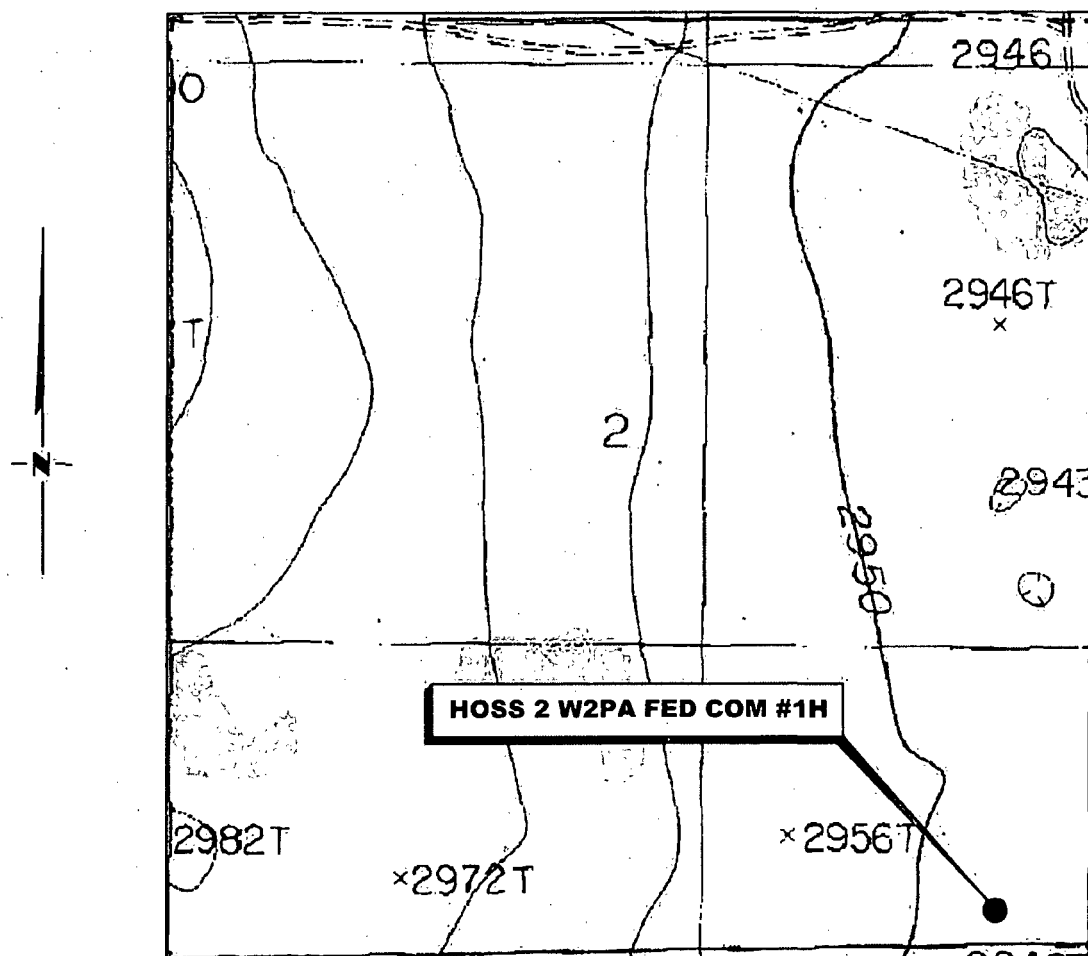
NO.	REVISION	DATE
JOB NO.:	LS1506287	
DWG. NO.:	1506287PAD	

RRC

308 W. BROADWAY ST., HOBBS, NM 88240 (575) 964-8200

SCALE: 1" = 100'
DATE: 6-17-2015
SURVEYED BY: BK/AA
DRAWN BY: CMJ
APPROVED BY: RMH
SHEET: 1 OF 1

LOCATION VERIFICATION MAP



*SECTION 2, TWP. 25 SOUTH, RGE. 28 EAST,
N. M. P. M., EDDY CO., NEW MEXICO*

OPERATOR: Mewbourne Oil Company
LEASE: Hoss 2 W2PA Fed Com
WELL NO.: 1H
ELEVATION: 2948'

LOCATION: 185' FSL & 450' FEL
CONTOUR INTERVAL: 10'
USGS TOPO. SOURCE MAP:
Malaga, NM (P. E. 1985)

Firm No.: TX 10193838 NM 4655451

Copyright 2015 - All Rights Reserved

NO.	REVISION	DATE
JOB NO.:	LS1506287	
DWG. NO.:	1506287LVM	

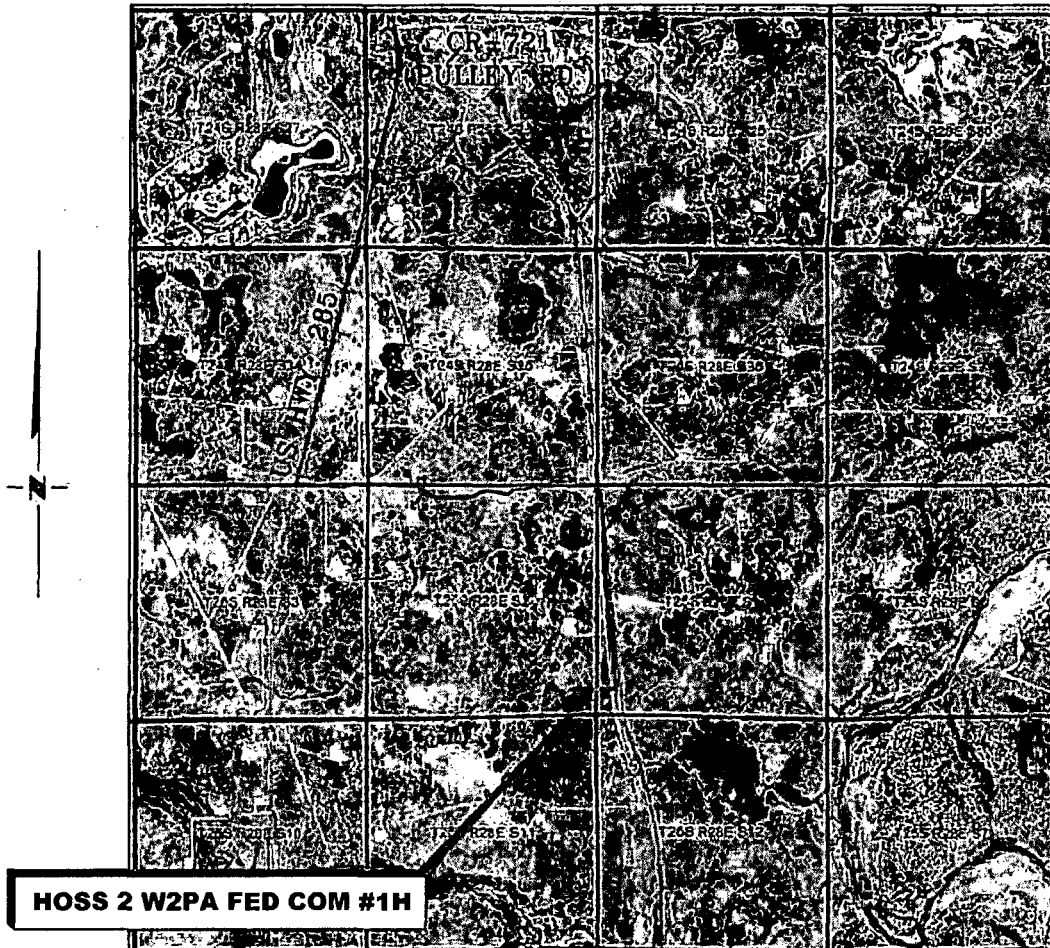
RRC

308 W. BROADWAY ST., HOBBS, NM 88240 (575) 964-8200

SCALE: 1000'
DATE: 6-17-2015
SURVEYED BY: BK/AA
DRAWN BY: CMJ
APPROVED BY: RMH
SHEET : 1 OF 1

VICINITY MAP

NOT TO SCALE



SECTION 2, TWP. 25 SOUTH, RGE. 28 EAST,
N. M. P. M., EDDY CO., NEW MEXICO

OPERATOR: Mewbourne Oil Company
LEASE: Hoss 2 W2PA Fed Com
WELL NO.: 1H

LOCATION: 185' FSL & 450' FEL
ELEVATION: 2948'

Firm No.: TX 10193838 NM 4655451

Copyright 2014 - All Rights Reserved

NO.	REVISION	DATE
JOB NO.:	LS1506287	
DWG. NO.:	1506287VM	

RRC

308 W. BROADWAY ST., HOBBS, NM 88240 (575) 964-8200

SCALE: NTS
DATE: 6-17-2015
SURVEYED BY: BK/AA
DRAWN BY: CMJ
APPROVED BY: RMH
SHEET : 1 OF 1

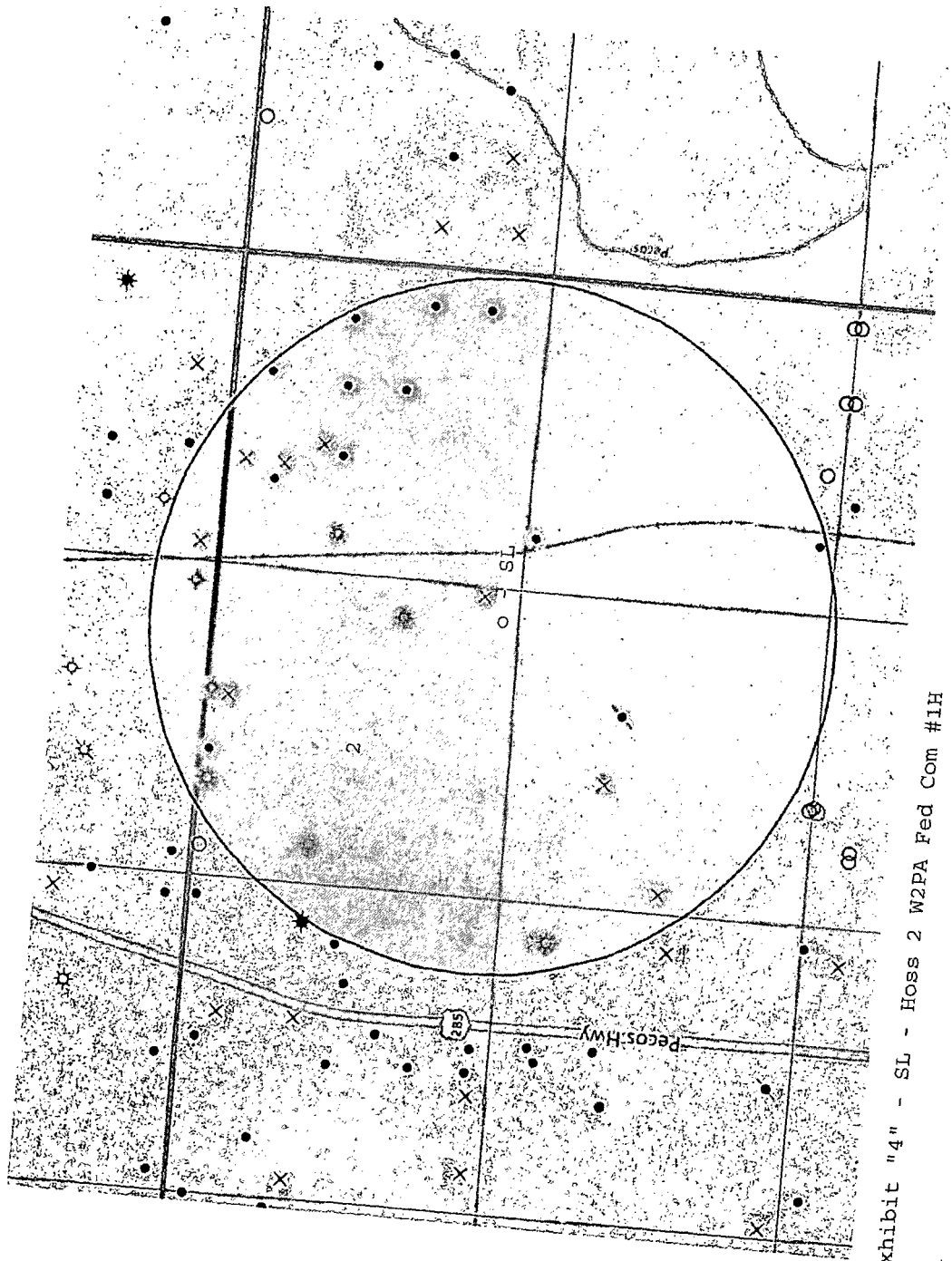


Exhibit "4" - SL - Hoss 2 W2PA Fed Com #1H

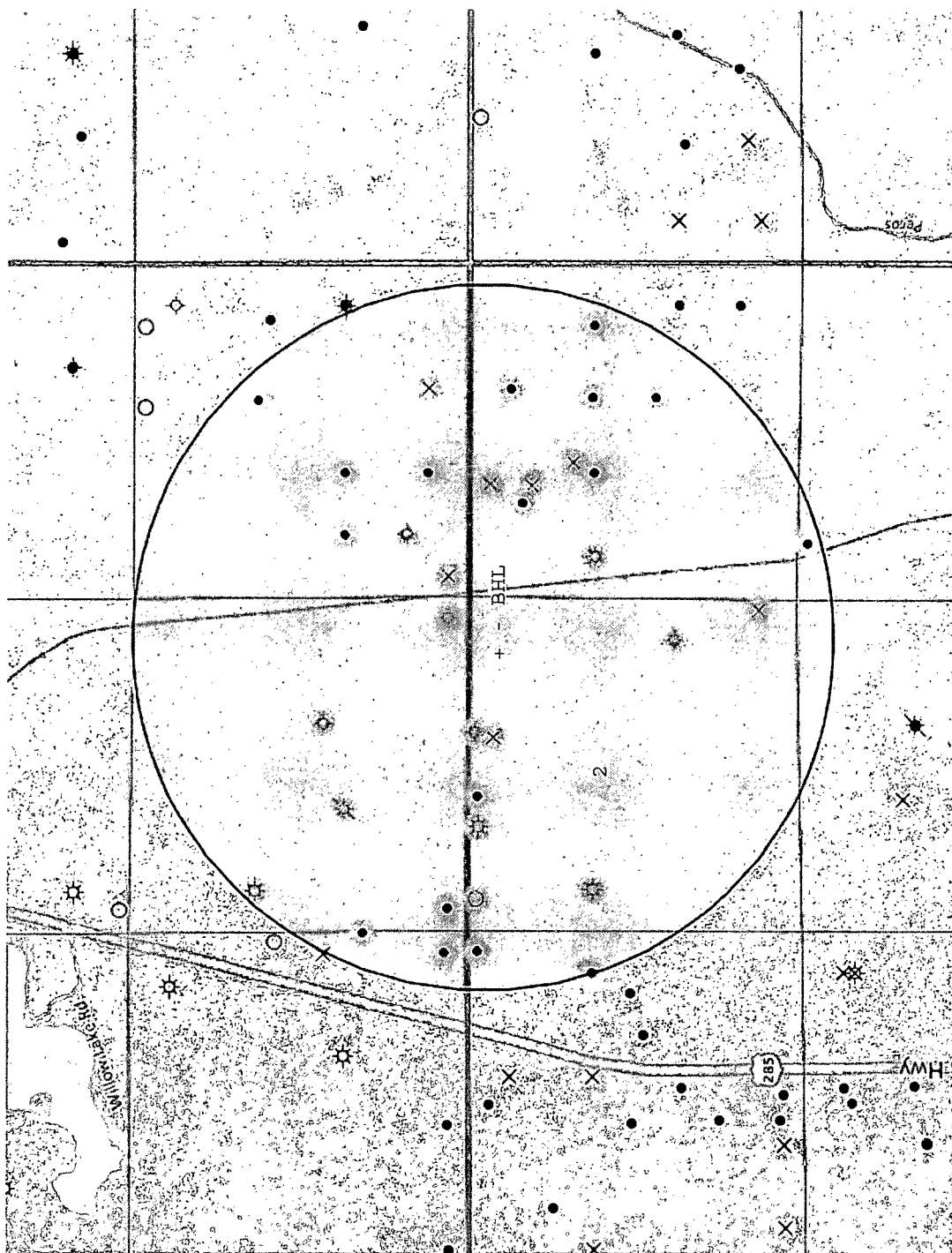
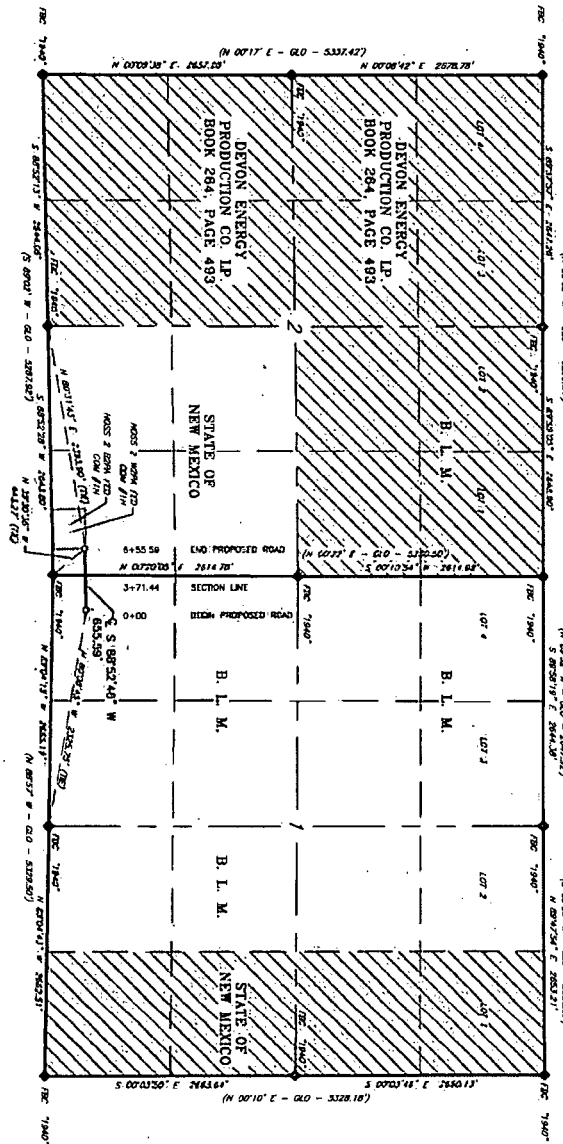


Exhibit "4A" - BHL - Hoss 2 W2PA Fed Com #1H

**MEWBOURNE OIL COMPANY
& THE HOSS 2 B2PA FED COM #1H
SECTIONS 1 & 2, T25S, R28E,
N. M. P. M., EDDY CO., NEW MEXICO**



SCALE: 1" = 1500'
0 750' 1500'
BEARINGS ARE HAD 27 GRID
AND EAST
DISTANCES ARE GROUND
LEGEND
() RECORD DATA - GLO
◇ FOUND MONUMENT
AS NOTED
— PROPOSED ACCESS ROAD

Firm No.: TX 10193838 NM 4655451

Copyright 2014 - All Rights Reserved

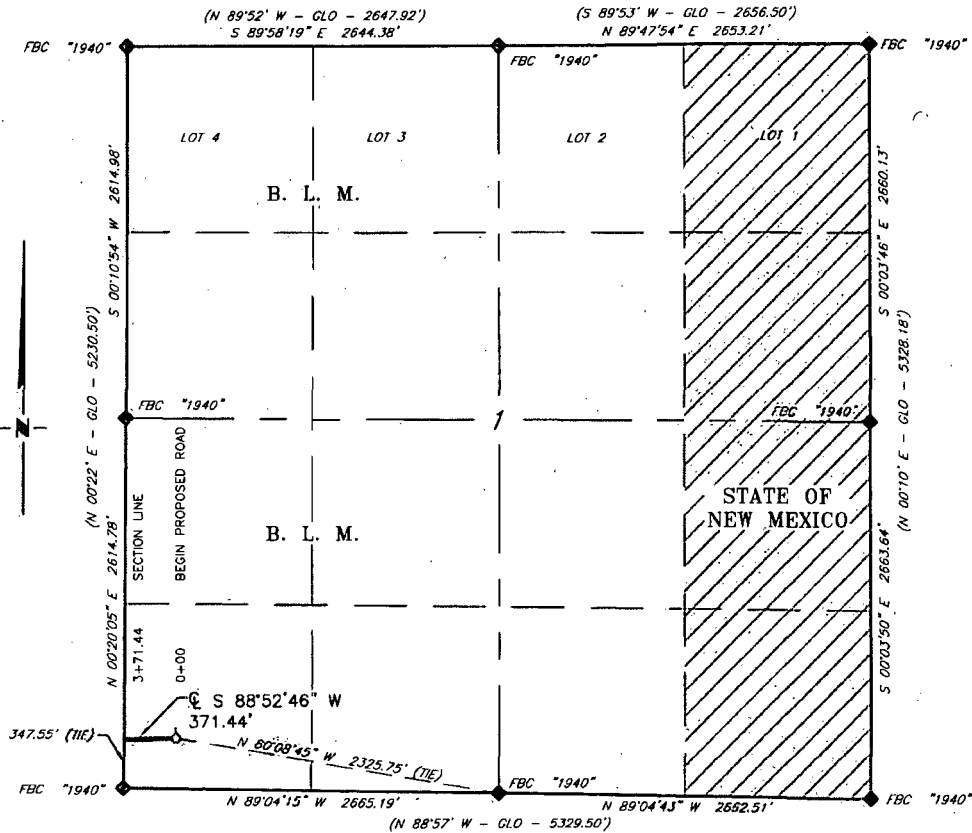
RRC

NO.	REVISION	DATE
JOB NO.:	LS1506286	
DWG. NO.:	1506286-1	

308 W. BROADWAY ST., HOBBS, NM 88240 (575) 964-8200

SCALE: 1" = 1500'
DATE: 6-17-2015
SURVEYED BY: BK/AA
DRAWN BY: CMJ
APPROVED BY: RMH
SHEET : 1 OF 3

MEWBOURNE OIL COMPANY
PROPOSED ACCESS ROAD FOR THE HOSS 2 B2PA FED COM
#1H & THE HOSS 2 W2PA FED COM #1H
SECTION 1, T25S, R28E,
N. M. P. M., EDDY CO., NEW MEXICO



DESCRIPTION

A strip of land 30 feet wide, being 371.44 feet or 22.512 rods in length, lying in Section 1, Township 25 South, Range 28 East, N. M. P. M., Eddy County, New Mexico, being 15 feet left and 15 feet right of the following described survey of a centerline across B. L. M. lands:

BEGINNING at Engr. Sta 0+00, a point in the Southwest quarter of Section 1, which bears N 80°08'45" W, 2,325.75 feet from a brass cap, stamped "1940", found for the South quarter corner of Section 1;

Thence S 88°52'46" W, 371.44 feet, to Engr. Sta 3+71.44, a point on the West line of Section 1, which bears N 00°20'05" E, 347.55 feet, from a brass cap, stamped "1940", found for the Southwest corner of Section 1;

Said strip of land contains 0.256 acres, more or less and is allocated by forties as follows:

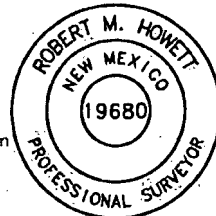
SW 1/4 SW 1/4 22.512 Rods 0.256 Acres

SCALE: 1" = 1000'
 0 500' 1000'
 BEARINGS ARE GRID NAD 27
 NM EAST
 DISTANCES ARE HORIZ. GROUND.

LEGEND
 () RECORD DATA - GLO
 ♦ FOUND MONUMENT AS NOTED
 — PROPOSED ACCESS ROAD

I, R. M. Howett, a N. M. Professional Surveyor, hereby certify that I prepared this plat from an actual survey made on the ground under my direct supervision, said survey and plat meet the Min. Stds. for Land Surveying in the State of N. M. and are true and correct to the best of my knowledge and belief.

Robert M. Howett
 Robert M. Howett NM PS 19680



Firm No.: TX 10193838 NM 4555451

Copyright 2014 - All Rights Reserved

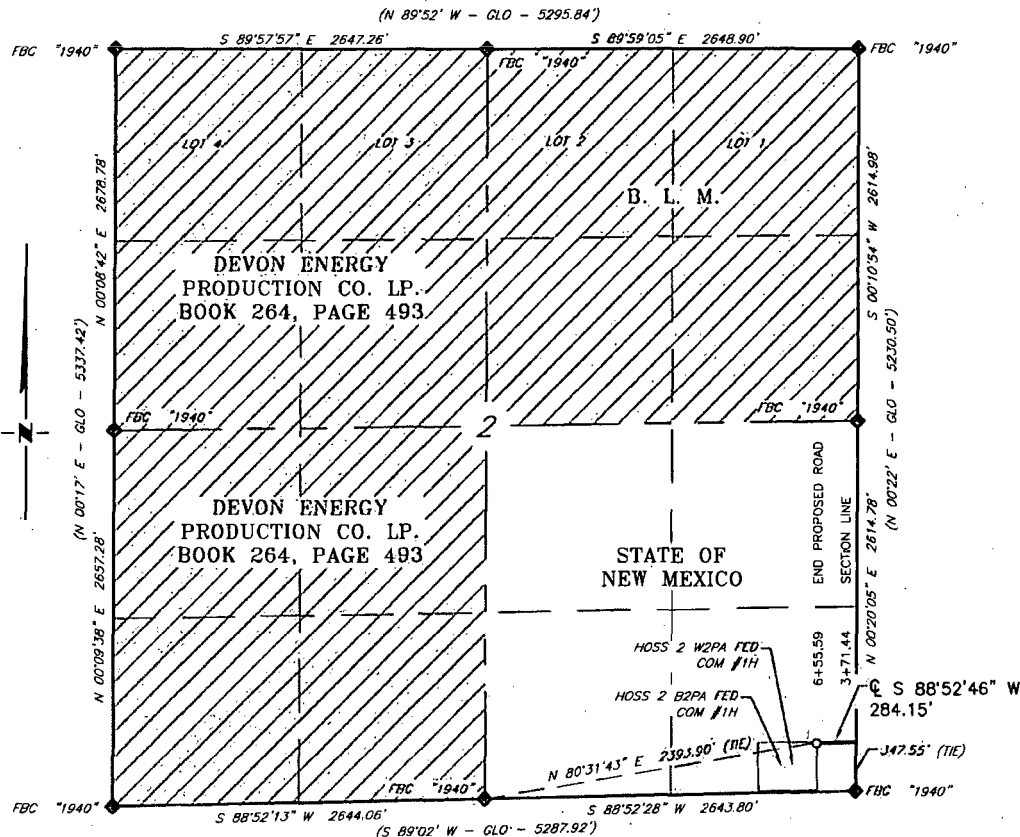
NO.	REVISION	DATE
JOB NO.:	LS1506286	
DWG. NO.:	1506286-2	

RRC

308 W. BROADWAY ST., HOBBS, NM 88240 (575) 964-8200

SCALE: 1" = 1000'
 DATE: 6-17-2015
 SURVEYED BY: BK/AA
 DRAWN BY: CMJ
 APPROVED BY: RMH
 SHEET: 2 OF 3

MEWBOURNE OIL COMPANY
PROPOSED ACCESS ROAD FOR THE HOSS 2 B2PA FED COM
#1H & THE HOSS 2 W2PA FED COM #1H
SECTION 2, T25S, R28E,
N. M. P. M., EDDY CO., NEW MEXICO



DESCRIPTION

A strip of land 20 feet wide, being 284.15 feet or 17.221 rods in length, lying in Section 2, Township 25 South, Range 28 East, N. M. P. M., Eddy County, New Mexico, being 10 feet left and 10 feet right of the following described survey of a centerline across State of New Mexico lands:

BEGINNING at Engr. Sta 3+71.44, a point on the East line of Section 2, which bears N 00°20'05" E, 347.55 feet from a brass cap, stamped "1940", found for the Southeast corner of Section 2;

Thence S 88°52'46" W, 284.15 feet, to Engr. Sta 6+55.59, a point in the Southeast quarter of Section 2, which bears N 80°31'43" E, 2393.90 feet, from a brass cap, stamped "1940", found for the South quarter corner of Section 2;

Said strip of land contains 0.131 acres, more or less and is allocated by forties as follows:

SE 1/4 SE 1/4 17.221 Rods 0.131 Acres

SCALE: 1" = 1000'
0 500' 1000'

BEARINGS ARE GRID NAD 27
NM EAST
DISTANCES ARE HORIZ. GROUND.

LEGEND
() RECORD DATA - GLO
◆ FOUND MONUMENT AS NOTED
— PROPOSED ACCESS ROAD

I, R. M. Howett, a N. M. Professional Surveyor, hereby certify that I prepared this plat from an actual survey made on the ground under my direct supervision, said survey and plat meet the Min. Stds. for Land Surveying in the State of N. M. and are true and correct to the best of my knowledge and belief.

Robert M. Howett
Robert M. Howett



Firm No.: TX 10193838 NM 4655451

Robert M. Howett NM PS 19680

Copyright 2014 - All Rights Reserved

NO.	REVISION	DATE
JOB NO.:	LS1506286	
DWG. NO.:	1506286-3	

RRC

308 W. BROADWAY ST., HOBBS, NM 88240 (575) 964-8200

SCALE: 1" = 1000'
DATE: 6-17-2015
SURVEYED BY: BK/AA
DRAWN BY: CMJ
APPROVED BY: RMH
SHEET : 3 OF 3

Mewbourne Oil Company, Hoss 2 W2PA Fed Com #1H
Sec 2, T25S, R28E
SL: 185' FSL & 450' FEL
BHL: 330' FNL & 450' FEL

1. Geologic Formations

TVD of target	10733'	Pilot hole depth	NA
MD at TD:	15209'	Deepest expected fresh water:	50'

Basin

Formation	Depth (TVD) from KB	Water/Mineral Bearing/ Target Zone?	Hazards*
Quaternary Fill	Surface		
Rustler			
Top of Salt			
Castile	1094	Barren	
Base of Salt	2413		
Lamar	2611	Oil	
Bell Canyon	2641		
Cherry Canyon	3546		
Manzanita Marker	3671		
Brushy Canyon	4815		
Bone Spring	6364	Oil/Gas	
1 st Bone Spring Sand	7208		
2 nd Bone Spring Sand	7875		
3 rd Bone Spring Sand	9002		
Abo			
Wolfcamp	9531	Target Zone	
Devonian			
Fusselman			
Ellenburger			
Granite Wash			

*H2S, water flows, loss of circulation, abnormal pressures, etc.

Mewbourne Oil Company, Hoss 2 W2PA Fed Com #1H
Sec 2, T25S, R28E
SL: 185' FSL & 450' FEL
BHL: 330' FNL & 450' FEL

2. Casing Program *See COA*

Hole Size	Casing Interval		Csg. Size	Weight (lbs)	Grade	Conn.	SF Collapse	SF Burst	SF Tension
	From	To							
17.5"	0'	425'	13.375"	48	H40	STC	3.35	7.83	15.78
12.25"	0'	2525' 2600'	9.625"	36	J55	LTC	1.54	2.68	4.98
8.75"	0'	10160'	7"	26	HCP110	LTC	1.48	1.89	2.41
8.75"	10160'	11060'	7"	26	HCP110	BTC	1.40	1.78	35.47
6.125"	10160'	15209'	4.5"	13.5	P110	LTC	1.92	2.22	4.94
BLM Minimum Safety Factor							1.125	1	1.6 Dry 1.8 Wet

All casing strings will be tested in accordance with Onshore Oil and Gas Order #2 III.B.1.h

Must have table for contingency casing

	Y or N
Is casing new? If used, attach certification as required in Onshore Order #1	Y
Is casing API approved? If no, attach casing specification sheet.	Y
Is premium or uncommon casing planned? If yes attach casing specification sheet.	N
Does the above casing design meet or exceed BLM's minimum standards? If not provide justification (loading assumptions, casing design criteria).	Y
Will the pipe be kept at a minimum 1/3 fluid filled to avoid approaching the collapse pressure rating of the casing?	Y
Is well located within Capitan Reef?	N
If yes, does production casing cement tie back a minimum of 50' above the Reef?	
Is well within the designated 4 string boundary.	
Is well located in SOPA but not in R-111-P?	N
If yes, are the first 2 strings cemented to surface and 3 rd string cement tied back 500' into previous casing?	
Is well located in R-111-P and SOPA?	N
If yes, are the first three strings cemented to surface?	
Is 2 nd string set 100' to 600' below the base of salt?	
Is well located in high Cave/Karst?	Y
If yes, are there two strings cemented to surface?	Y
(For 2 string wells) If yes, is there a contingency casing if lost circulation occurs?	
Is well located in critical Cave/Karst?	N
If yes, are there three strings cemented to surface?	

Mewbourne Oil Company, Hoss 2 W2PA Fed Com #1H
Sec 2, T25S, R28E
SL: 185' FSL & 450' FEL
BHL: 330' FNL & 450' FEL

3. Cementing Program *See COA*

Casing	# Sks	Wt. lb/ gal	Yld ft ³ / sack	H ₂ O gal/ sk	500# Comp. Strength (hours)	Slurry Description
Surf.	160	12.5	2.12	11	10	Lead: Class C (35:65:4) + 5% Sodium Chloride +5#/sk LCM +0.25lb/sk Cello-Flake
	200	14.8	1.34	6.3	8	Tail: Class C + 0.25 lb/sk Cello Flake + 0.005 lb/sk Static Free
Inter.	345	12.5	2.12	11	10	Lead: Class C (35:65:4) + 5% Sodium Chloride +5#/sk LCM +0.25lb/sk Cello-Flake
	200	14.8	1.34	6.3	8	Tail: Class C + 0.25 lb/sk Cello Flake + 0.005 lb/sk Static Free
Prod.	555	12.5	2.12	11	9	Lead: 60:40:0 Class C + 15.00 lb/sk BA-90 + 4.00% MPS-5 + 3.00% SMS + 5.00% A-10 + 1.00% BA-10A + 0.80% ASA-301 + 2.90% R-21 + 8.00 lb/sk LCM-1 + 0.005 lb/sk Static Free
	400	15.6	1.18	5.2	10	Tail: Class H + 0.65% FL-52 + 0.10% R-3 + 0.005 lb/sk Static Free
Liner	205	11.2	2.97	18	16	Class C (60:40:0)+4% MPA5+1.2% BA10A+10#/sk BA90+5%A10+0.65%ASA301+1.5%SMS+1.2%R21

*low
Cement
- See COA -*

*low
Cement
- See COA -*

A copy of cement test will be available on location at time of cement job providing pump times & compressive strengths.

Casing String	TOC	% Excess
Surface	0'	100%
Intermediate	0'	25%
Production	2325'	25%
Liner	10160'	25%

Mewbourne Oil Company, Hoss 2 W2PA Fed Com #1H
Sec 2, T25S, R28E
SL: 185' FSL & 450' FEL
BHL: 330' FNL & 450' FEL

4. Pressure Control Equipment *See COA*

Variance: None

BOP installed and tested before drilling which hole?	Size?	System Rated WP	Type	✓	Tested to:
12-1/4"	13-5/8"	<i>2M</i> 3M	Annular	X	1250#
			Blind Ram		
			Pipe Ram		
			Double Ram		
			Other*		
8-3/4"	11"	5M	Annular	X	2500#
			Blind Ram	X	5000#
			Pipe Ram	X	
			Double Ram		
			Other*		
6-1/8"	11"	5M	Annular	X	2500#
			Blind Ram	X	5000#
			Pipe Ram	X	
			Double Ram		
			Other*		

*Specify if additional ram is utilized.

BOP/BOPE will be tested by an independent service company to 250 psi low and the high pressure indicated above per Onshore Order 2 requirements. The System may be upgraded to a higher pressure but still tested to the working pressure listed in the table above. If the system is upgraded all the components installed will be functional and tested.

Pipe rams will be operationally checked each 24 hour period. Blind rams will be operationally checked on each trip out of the hole. These checks will be noted on the daily tour sheets. Other accessories to the BOP equipment will include a Kelly cock and floor safety valve (inside BOP) and choke lines and choke manifold. See attached schematics.

X	Formation integrity test will be performed per Onshore Order #2.
---	--

Mewbourne Oil Company, Hoss 2 W2PA Fed Com #1H

Sec 2, T25S, R28E

SL: 185' FSL & 450' FEL

BHL: 330' FNL & 450' FEL

*See
COA*

	On Exploratory wells or on that portion of any well approved for a 5M BOPE system or greater, a pressure integrity test of each casing shoe shall be performed. Will be tested in accordance with Onshore Oil and Gas Order #2 III.B.1.i.
Y	A variance is requested for the use of a flexible choke line from the BOP to Choke Manifold. See attached for specs and hydrostatic test chart.
N	Are anchors required by manufacturer?
N	<p>A multibowl wellhead is being used. The BOP will be tested per Onshore Order #2 after installation on the surface casing which will cover testing requirements for a maximum of 30 days. If any seal subject to test pressure is broken the system must be tested.</p> <ul style="list-style-type: none"> Provide description here <p>See attached schematic.</p>

5. Mud Program

Depth		Type	Weight (ppg)	Viscosity	Water Loss
From	To				
0	425	FW Gel	8.6-8.8	28-34	N/C
425	2525 2600	Saturated Brine	10.0	28-34	N/C
2525	10160	Cut Brine	8.6-9.5	28-34	N/C
10160	15209	FW w/Polymer	10.0-13.0	30-40	<20cc

Sufficient mud materials to maintain mud properties and meet minimum lost circulation and weight increase requirements will be kept on location at all times.

What will be used to monitor the loss or gain of fluid?	Pason/PVT/Visual Monitoring
---	-----------------------------

6. Logging and Testing Procedures

Logging, Coring and Testing	
X	Will run GR/CNL from TD to surface (horizontal well – vertical portion of hole). Stated logs run will be in the Completion Report and submitted to the BLM.
	No Logs are planned based on well control or offset log information.
	Drill stem test? If yes, explain
	Coring? If yes, explain

Additional logs planned		Interval
X	Gamma Ray	10160'(KOP) to TD
	Density	
	CBL	
	Mud log	

Mewbourne Oil Company, Hoss 2 W2PA Fed Com #1H
Sec 2, T25S, R28E
SL: 185' FSL & 450' FEL
BHL: 330' FNL & 450' FEL

	PEX	
--	-----	--

7. Drilling Conditions

Condition	Specify what type and where?
BH Pressure at deepest TVD	4615 psi
Abnormal Temperature	No

Mitigation measure for abnormal conditions. Describe. Lost circulation material/sweeps/mud scavengers in surface hole. Weighted mud for possible over-pressure in Wolfcamp formation.

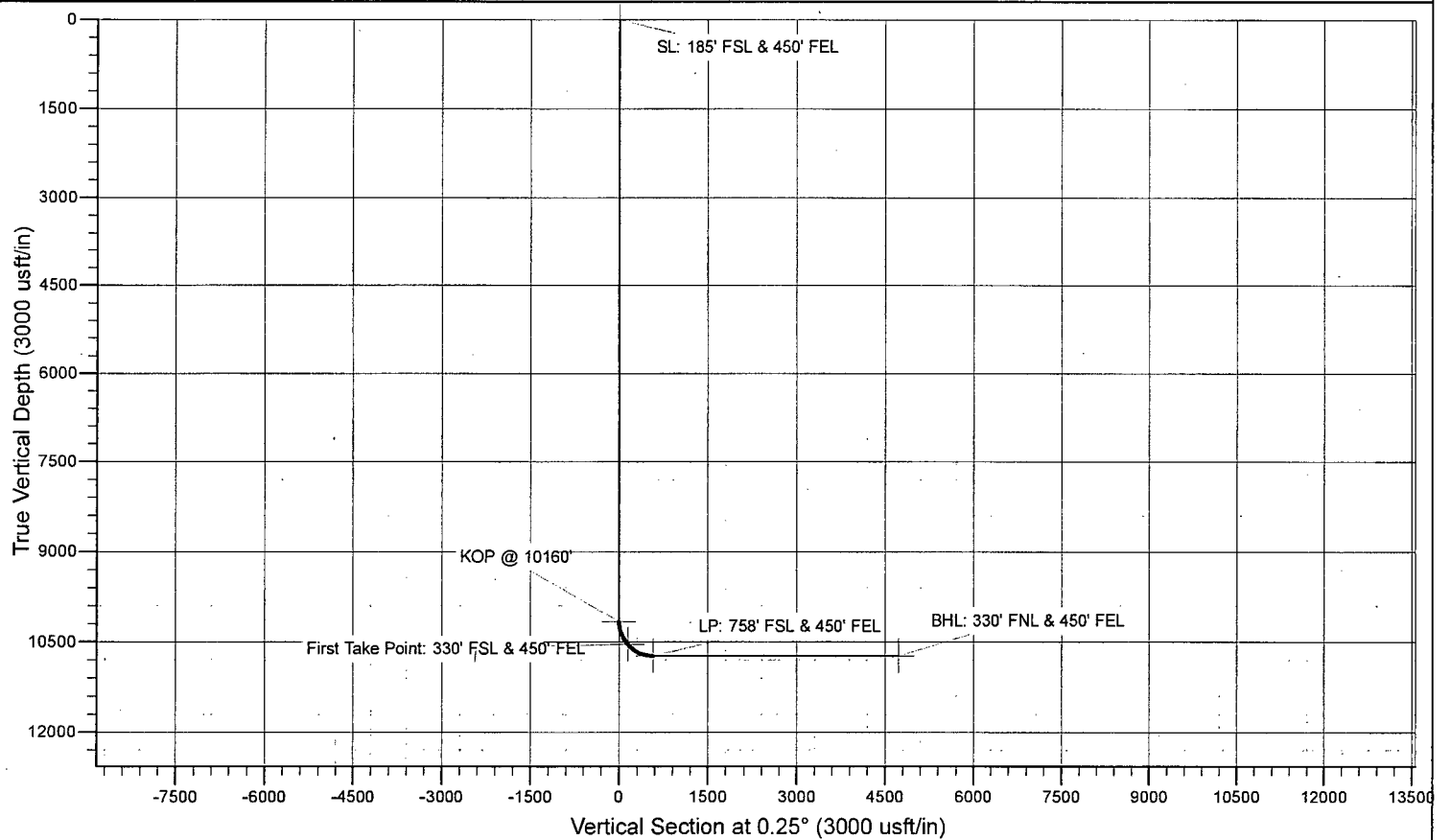
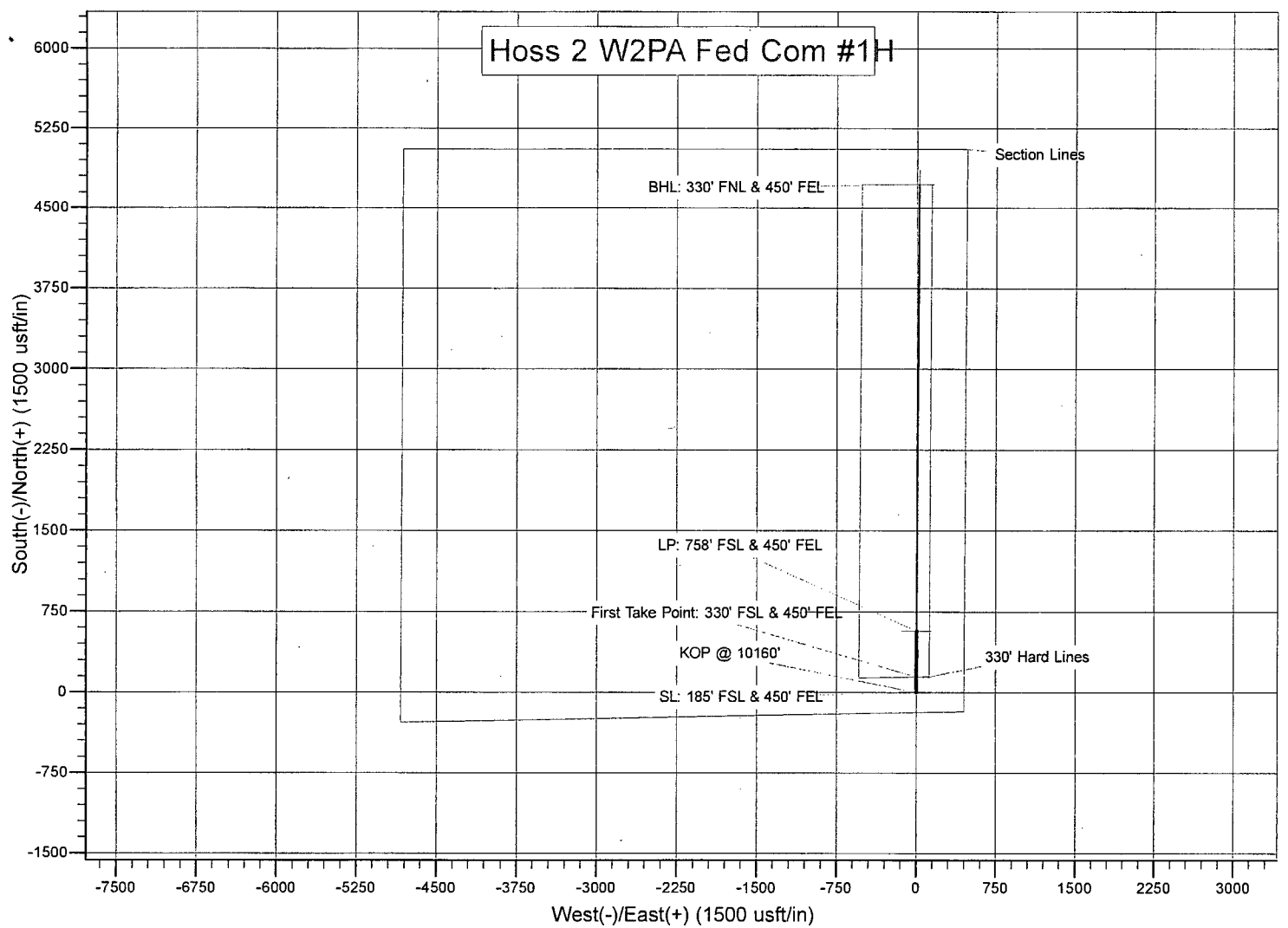
Hydrogen Sulfide (H₂S) monitors will be installed prior to drilling out the surface shoe. If H₂S is detected in concentrations greater than 100 ppm, the operator will comply with the provisions of Onshore Oil and Gas Order #6. If Hydrogen Sulfide is encountered, measured values and formations will be provided to the BLM.

	H ₂ S is present
X	H ₂ S Plan attached

8. Other facets of operation

Is this a walking operation? If yes, describe.
 Will be pre-setting casing? If yes, describe.

Attachments
☐ Directional Plan
☐ Other, describe



Mewbourne Oil Company

Eddy County, New Mexico
Hoss 2 W2PA Fed Com #1H
Sec 2, T25S, R28E
SL: 185' FSL & 450' FEL
BHL: 330' FNL & 450' FEL

Plan: Design #1

Standard Planning Report

14 July, 2015

Planning Report

Database:	Hobbs	Local Co-ordinate Reference:	Site Hoss 2 W2PA Fed Com #1H
Company:	Mewbourne Oil Company	TVD Reference:	WELL @ 2973.0usft (Original Well Elev)
Project:	Eddy County, New Mexico	MD Reference:	WELL @ 2973.0usft (Original Well Elev)
Site:	Hoss 2 W2PA Fed Com #1H	North Reference:	Grid
Well:	Sec 2, T25S, R28E	Survey Calculation Method:	Minimum Curvature
Wellbore:	BHL: 330' FNL & 450' FEL		
Design:	Design #1		

Project	Eddy County, New Mexico		
Map System:	US State Plane 1927 (Exact solution)	System Datum:	Mean Sea Level
Geo Datum:	NAD 1927 (NADCON CONUS)		
Map Zone:	New Mexico East 3001		

Site	Hoss 2 W2PA Fed Com #1H		
Site Position:		Northing:	419,310.00 usft
From:	Map	Easting:	587,548.00 usft
Position Uncertainty:	0.0 usft	Slot Radius:	13-3/16 "
		Latitude:	32° 9' 8.942 N
		Longitude:	104° 3' 1.609 W
		Grid Convergence:	0.15 °

Well	Sec 2, T25S, R28E		
Well Position	+N/-S	0.0 usft	Northing: 419,310.00 usft
	+E/-W	0.0 usft	Easting: 587,548.00 usft
Position Uncertainty	0.0 usft	Wellhead Elevation:	2,973.0 usft
		Latitude:	32° 9' 8.942 N
		Longitude:	104° 3' 1.609 W
		Ground Level:	2,948.0 usft

Wellbore	BHL: 330' FNL & 450' FEL		
Magnetics	Model Name	Sample Date	Declination
			(°)
	IGRF200510	12/31/2009	7.96
			Dip Angle
			(°)
			60.09
			Field Strength
			(nT)
			48,699

Design	Design #1		
Audit Notes:			
Version:	Phase:	PROTOTYPE	Tie On Depth: 0.0
Vertical Section:	Depth From (TVD)	+N/-S	+E/-W
	(usft)	(usft)	(usft)
	0.0	0.0	0.0
			Direction
			(°)
			0.25

Plan Sections										
Measured	Inclination	Azimuth	Vertical	+N/-S	+E/-W	Dogleg	Build	Turn	TFO	Target
Depth	(°)	(°)	Depth	(usft)	(usft)	Rate	Rate	Rate	(°)	
(usft)			(usft)			(°/100usft)	(°/100usft)	(°/100usft)		
0.0	0.00	0.00	0.0	0.0	0.0	0.00	0.00	0.00	0.00	
10,160.0	0.00	0.00	10,160.0	0.0	0.0	0.00	0.00	0.00	0.00	
11,060.0	90.00	0.25	10,733.0	573.0	2.5	10.00	10.00	0.00	0.25	
15,209.1	90.00	0.25	10,733.0	4,722.0	21.0	0.00	0.00	0.00	0.00	BHL: 330' FNL & 450'

Planning Report

Database:	Hobbs	Local Co-ordinate Reference:	Site Hoss 2 W2PA Fed Com #1H
Company:	Mewbourne Oil Company	TVD Reference:	WELL @ 2973.0usft (Original Well Elev)
Project:	Eddy County, New Mexico	MD Reference:	WELL @ 2973.0usft (Original Well Elev)
Site:	Hoss 2 W2PA Fed Com #1H	North Reference:	Grid
Well:	Sec 2, T25S, R28E	Survey Calculation Method:	Minimum Curvature
Wellbore:	BHL: 330' FNL & 450' FEL		
Design:	Design #1		

Planned Survey

Measured Depth (usft)	Inclination (°)	Azimuth (°)	Vertical Depth (usft)	+N/-S (usft)	+E/-W (usft)	Vertical Section (usft)	Dogleg Rate (°/100usft)	Build Rate (°/100usft)	Turn Rate (°/100usft)
0.0	0.00	0.00	0.0	0.0	0.0	0.0	0.00	0.00	0.00
SL: 185' FSL & 450' FEL									
100.0	0.00	0.00	100.0	0.0	0.0	0.0	0.00	0.00	0.00
200.0	0.00	0.00	200.0	0.0	0.0	0.0	0.00	0.00	0.00
300.0	0.00	0.00	300.0	0.0	0.0	0.0	0.00	0.00	0.00
400.0	0.00	0.00	400.0	0.0	0.0	0.0	0.00	0.00	0.00
500.0	0.00	0.00	500.0	0.0	0.0	0.0	0.00	0.00	0.00
600.0	0.00	0.00	600.0	0.0	0.0	0.0	0.00	0.00	0.00
700.0	0.00	0.00	700.0	0.0	0.0	0.0	0.00	0.00	0.00
800.0	0.00	0.00	800.0	0.0	0.0	0.0	0.00	0.00	0.00
900.0	0.00	0.00	900.0	0.0	0.0	0.0	0.00	0.00	0.00
1,000.0	0.00	0.00	1,000.0	0.0	0.0	0.0	0.00	0.00	0.00
1,100.0	0.00	0.00	1,100.0	0.0	0.0	0.0	0.00	0.00	0.00
1,200.0	0.00	0.00	1,200.0	0.0	0.0	0.0	0.00	0.00	0.00
1,300.0	0.00	0.00	1,300.0	0.0	0.0	0.0	0.00	0.00	0.00
1,400.0	0.00	0.00	1,400.0	0.0	0.0	0.0	0.00	0.00	0.00
1,500.0	0.00	0.00	1,500.0	0.0	0.0	0.0	0.00	0.00	0.00
1,600.0	0.00	0.00	1,600.0	0.0	0.0	0.0	0.00	0.00	0.00
1,700.0	0.00	0.00	1,700.0	0.0	0.0	0.0	0.00	0.00	0.00
1,800.0	0.00	0.00	1,800.0	0.0	0.0	0.0	0.00	0.00	0.00
1,900.0	0.00	0.00	1,900.0	0.0	0.0	0.0	0.00	0.00	0.00
2,000.0	0.00	0.00	2,000.0	0.0	0.0	0.0	0.00	0.00	0.00
2,100.0	0.00	0.00	2,100.0	0.0	0.0	0.0	0.00	0.00	0.00
2,200.0	0.00	0.00	2,200.0	0.0	0.0	0.0	0.00	0.00	0.00
2,300.0	0.00	0.00	2,300.0	0.0	0.0	0.0	0.00	0.00	0.00
2,400.0	0.00	0.00	2,400.0	0.0	0.0	0.0	0.00	0.00	0.00
2,500.0	0.00	0.00	2,500.0	0.0	0.0	0.0	0.00	0.00	0.00
2,600.0	0.00	0.00	2,600.0	0.0	0.0	0.0	0.00	0.00	0.00
2,700.0	0.00	0.00	2,700.0	0.0	0.0	0.0	0.00	0.00	0.00
2,800.0	0.00	0.00	2,800.0	0.0	0.0	0.0	0.00	0.00	0.00
2,900.0	0.00	0.00	2,900.0	0.0	0.0	0.0	0.00	0.00	0.00
3,000.0	0.00	0.00	3,000.0	0.0	0.0	0.0	0.00	0.00	0.00
3,100.0	0.00	0.00	3,100.0	0.0	0.0	0.0	0.00	0.00	0.00
3,200.0	0.00	0.00	3,200.0	0.0	0.0	0.0	0.00	0.00	0.00
3,300.0	0.00	0.00	3,300.0	0.0	0.0	0.0	0.00	0.00	0.00
3,400.0	0.00	0.00	3,400.0	0.0	0.0	0.0	0.00	0.00	0.00
3,500.0	0.00	0.00	3,500.0	0.0	0.0	0.0	0.00	0.00	0.00
3,600.0	0.00	0.00	3,600.0	0.0	0.0	0.0	0.00	0.00	0.00
3,700.0	0.00	0.00	3,700.0	0.0	0.0	0.0	0.00	0.00	0.00
3,800.0	0.00	0.00	3,800.0	0.0	0.0	0.0	0.00	0.00	0.00
3,900.0	0.00	0.00	3,900.0	0.0	0.0	0.0	0.00	0.00	0.00
4,000.0	0.00	0.00	4,000.0	0.0	0.0	0.0	0.00	0.00	0.00
4,100.0	0.00	0.00	4,100.0	0.0	0.0	0.0	0.00	0.00	0.00
4,200.0	0.00	0.00	4,200.0	0.0	0.0	0.0	0.00	0.00	0.00
4,300.0	0.00	0.00	4,300.0	0.0	0.0	0.0	0.00	0.00	0.00
4,400.0	0.00	0.00	4,400.0	0.0	0.0	0.0	0.00	0.00	0.00
4,500.0	0.00	0.00	4,500.0	0.0	0.0	0.0	0.00	0.00	0.00
4,600.0	0.00	0.00	4,600.0	0.0	0.0	0.0	0.00	0.00	0.00
4,700.0	0.00	0.00	4,700.0	0.0	0.0	0.0	0.00	0.00	0.00
4,800.0	0.00	0.00	4,800.0	0.0	0.0	0.0	0.00	0.00	0.00
4,900.0	0.00	0.00	4,900.0	0.0	0.0	0.0	0.00	0.00	0.00
5,000.0	0.00	0.00	5,000.0	0.0	0.0	0.0	0.00	0.00	0.00
5,100.0	0.00	0.00	5,100.0	0.0	0.0	0.0	0.00	0.00	0.00
5,200.0	0.00	0.00	5,200.0	0.0	0.0	0.0	0.00	0.00	0.00

Planning Report

Database:	Hobbs	Local Co-ordinate Reference:	Site Hoss 2 W2PA Fed Com #1H
Company:	Mewbourne Oil Company	TVD Reference:	WELL @ 2973.0usft (Original Well Elev)
Project:	Eddy County, New Mexico	MD Reference:	WELL @ 2973.0usft (Original Well Elev)
Site:	Hoss 2 W2PA Fed Com #1H	North Reference:	Grid
Well:	Sec 2, T25S, R28E	Survey Calculation Method:	Minimum Curvature
Wellbore:	BHL: 330' FNL & 450' FEL		
Design:	Design #1		

Planned Survey										
Measured Depth (usft)	Inclination (°)	Azimuth (°)	Vertical Depth (usft)	+N/-S (usft)	+E/-W (usft)	Vertical Section (usft)	Dogleg Rate (°/100usft)	Build Rate (°/100usft)	Turn Rate (°/100usft)	
5,300.0	0.00	0.00	5,300.0	0.0	0.0	0.0	0.00	0.00	0.00	
5,400.0	0.00	0.00	5,400.0	0.0	0.0	0.0	0.00	0.00	0.00	
5,500.0	0.00	0.00	5,500.0	0.0	0.0	0.0	0.00	0.00	0.00	
5,600.0	0.00	0.00	5,600.0	0.0	0.0	0.0	0.00	0.00	0.00	
5,700.0	0.00	0.00	5,700.0	0.0	0.0	0.0	0.00	0.00	0.00	
5,800.0	0.00	0.00	5,800.0	0.0	0.0	0.0	0.00	0.00	0.00	
5,900.0	0.00	0.00	5,900.0	0.0	0.0	0.0	0.00	0.00	0.00	
6,000.0	0.00	0.00	6,000.0	0.0	0.0	0.0	0.00	0.00	0.00	
6,100.0	0.00	0.00	6,100.0	0.0	0.0	0.0	0.00	0.00	0.00	
6,200.0	0.00	0.00	6,200.0	0.0	0.0	0.0	0.00	0.00	0.00	
6,300.0	0.00	0.00	6,300.0	0.0	0.0	0.0	0.00	0.00	0.00	
6,400.0	0.00	0.00	6,400.0	0.0	0.0	0.0	0.00	0.00	0.00	
6,500.0	0.00	0.00	6,500.0	0.0	0.0	0.0	0.00	0.00	0.00	
6,600.0	0.00	0.00	6,600.0	0.0	0.0	0.0	0.00	0.00	0.00	
6,700.0	0.00	0.00	6,700.0	0.0	0.0	0.0	0.00	0.00	0.00	
6,800.0	0.00	0.00	6,800.0	0.0	0.0	0.0	0.00	0.00	0.00	
6,900.0	0.00	0.00	6,900.0	0.0	0.0	0.0	0.00	0.00	0.00	
7,000.0	0.00	0.00	7,000.0	0.0	0.0	0.0	0.00	0.00	0.00	
7,100.0	0.00	0.00	7,100.0	0.0	0.0	0.0	0.00	0.00	0.00	
7,200.0	0.00	0.00	7,200.0	0.0	0.0	0.0	0.00	0.00	0.00	
7,300.0	0.00	0.00	7,300.0	0.0	0.0	0.0	0.00	0.00	0.00	
7,400.0	0.00	0.00	7,400.0	0.0	0.0	0.0	0.00	0.00	0.00	
7,500.0	0.00	0.00	7,500.0	0.0	0.0	0.0	0.00	0.00	0.00	
7,600.0	0.00	0.00	7,600.0	0.0	0.0	0.0	0.00	0.00	0.00	
7,700.0	0.00	0.00	7,700.0	0.0	0.0	0.0	0.00	0.00	0.00	
7,800.0	0.00	0.00	7,800.0	0.0	0.0	0.0	0.00	0.00	0.00	
7,900.0	0.00	0.00	7,900.0	0.0	0.0	0.0	0.00	0.00	0.00	
8,000.0	0.00	0.00	8,000.0	0.0	0.0	0.0	0.00	0.00	0.00	
8,100.0	0.00	0.00	8,100.0	0.0	0.0	0.0	0.00	0.00	0.00	
8,200.0	0.00	0.00	8,200.0	0.0	0.0	0.0	0.00	0.00	0.00	
8,300.0	0.00	0.00	8,300.0	0.0	0.0	0.0	0.00	0.00	0.00	
8,400.0	0.00	0.00	8,400.0	0.0	0.0	0.0	0.00	0.00	0.00	
8,500.0	0.00	0.00	8,500.0	0.0	0.0	0.0	0.00	0.00	0.00	
8,600.0	0.00	0.00	8,600.0	0.0	0.0	0.0	0.00	0.00	0.00	
8,700.0	0.00	0.00	8,700.0	0.0	0.0	0.0	0.00	0.00	0.00	
8,800.0	0.00	0.00	8,800.0	0.0	0.0	0.0	0.00	0.00	0.00	
8,900.0	0.00	0.00	8,900.0	0.0	0.0	0.0	0.00	0.00	0.00	
9,000.0	0.00	0.00	9,000.0	0.0	0.0	0.0	0.00	0.00	0.00	
9,100.0	0.00	0.00	9,100.0	0.0	0.0	0.0	0.00	0.00	0.00	
9,200.0	0.00	0.00	9,200.0	0.0	0.0	0.0	0.00	0.00	0.00	
9,300.0	0.00	0.00	9,300.0	0.0	0.0	0.0	0.00	0.00	0.00	
9,400.0	0.00	0.00	9,400.0	0.0	0.0	0.0	0.00	0.00	0.00	
9,500.0	0.00	0.00	9,500.0	0.0	0.0	0.0	0.00	0.00	0.00	
9,600.0	0.00	0.00	9,600.0	0.0	0.0	0.0	0.00	0.00	0.00	
9,700.0	0.00	0.00	9,700.0	0.0	0.0	0.0	0.00	0.00	0.00	
9,800.0	0.00	0.00	9,800.0	0.0	0.0	0.0	0.00	0.00	0.00	
9,900.0	0.00	0.00	9,900.0	0.0	0.0	0.0	0.00	0.00	0.00	
10,000.0	0.00	0.00	10,000.0	0.0	0.0	0.0	0.00	0.00	0.00	
10,100.0	0.00	0.00	10,100.0	0.0	0.0	0.0	0.00	0.00	0.00	
10,160.0	0.00	0.00	10,160.0	0.0	0.0	0.0	0.00	0.00	0.00	
KOP @ 10160'										
10,200.0	4.00	0.25	10,200.0	1.4	0.0	1.4	10.00	10.00	0.00	
10,300.0	14.00	0.25	10,298.6	17.0	0.1	17.0	10.00	10.00	0.00	

Planning Report

Database:	Hobbs	Local Co-ordinate Reference:	Site Hoss 2 W2PA Fed Com #1H
Company:	Mewbourne Oil Company	TVD Reference:	WELL @ 2973.0usft (Original Well Elev)
Project:	Eddy County, New Mexico	MD Reference:	WELL @ 2973.0usft (Original Well Elev)
Site:	Hoss 2 W2PA Fed Com #1H	North Reference:	Grid
Well:	Sec 2, T25S, R28E	Survey Calculation Method:	Minimum Curvature
Wellbore:	BHL: 330' FNL & 450' FEL		
Design:	Design #1		

Planned Survey

Measured Depth (usft)	Inclination (°)	Azimuth (°)	Vertical Depth (usft)	+N/-S (usft)	+E/-W (usft)	Vertical Section (usft)	Dogleg Rate (°/100usft)	Build Rate (°/100usft)	Turn Rate (°/100usft)
10,400.0	24.00	0.25	10,393.0	49.5	0.2	49.5	10.00	10.00	0.00
10,500.0	34.00	0.25	10,480.4	97.9	0.4	97.9	10.00	10.00	0.00
10,576.8	41.68	0.25	10,541.0	145.0	0.6	145.0	10.00	10.00	0.00
First Take Point: 330' FSL & 450' FEL									
10,600.0	44.00	0.25	10,558.0	160.8	0.7	160.8	10.00	10.00	0.00
10,700.0	54.00	0.25	10,623.5	236.1	1.1	236.1	10.00	10.00	0.00
10,800.0	64.00	0.25	10,675.0	321.7	1.4	321.8	10.00	10.00	0.00
10,900.0	74.00	0.25	10,710.8	415.0	1.8	415.0	10.00	10.00	0.00
11,000.0	84.00	0.25	10,729.9	513.0	2.3	513.0	10.00	10.00	0.00
11,060.1	90.00	0.25	10,733.0	573.0	2.5	573.0	9.99	9.99	0.00
LP: 758' FSL & 450' FEL									
11,100.0	90.00	0.25	10,733.0	612.9	2.7	612.9	0.00	0.00	0.00
11,200.0	90.00	0.25	10,733.0	712.9	3.2	712.9	0.00	0.00	0.00
11,300.0	90.00	0.25	10,733.0	812.9	3.6	812.9	0.00	0.00	0.00
11,400.0	90.00	0.25	10,733.0	912.9	4.1	912.9	0.00	0.00	0.00
11,500.0	90.00	0.25	10,733.0	1,012.9	4.5	1,012.9	0.00	0.00	0.00
11,600.0	90.00	0.25	10,733.0	1,112.9	4.9	1,112.9	0.00	0.00	0.00
11,700.0	90.00	0.25	10,733.0	1,212.9	5.4	1,212.9	0.00	0.00	0.00
11,800.0	90.00	0.25	10,733.0	1,312.9	5.8	1,312.9	0.00	0.00	0.00
11,900.0	90.00	0.25	10,733.0	1,412.9	6.3	1,412.9	0.00	0.00	0.00
12,000.0	90.00	0.25	10,733.0	1,512.9	6.7	1,512.9	0.00	0.00	0.00
12,100.0	90.00	0.25	10,733.0	1,612.9	7.2	1,612.9	0.00	0.00	0.00
12,200.0	90.00	0.25	10,733.0	1,712.9	7.6	1,712.9	0.00	0.00	0.00
12,300.0	90.00	0.25	10,733.0	1,812.9	8.1	1,812.9	0.00	0.00	0.00
12,400.0	90.00	0.25	10,733.0	1,912.9	8.5	1,912.9	0.00	0.00	0.00
12,500.0	90.00	0.25	10,733.0	2,012.9	9.0	2,012.9	0.00	0.00	0.00
12,600.0	90.00	0.25	10,733.0	2,112.9	9.4	2,112.9	0.00	0.00	0.00
12,700.0	90.00	0.25	10,733.0	2,212.9	9.8	2,212.9	0.00	0.00	0.00
12,800.0	90.00	0.25	10,733.0	2,312.9	10.3	2,312.9	0.00	0.00	0.00
12,900.0	90.00	0.25	10,733.0	2,412.9	10.7	2,412.9	0.00	0.00	0.00
13,000.0	90.00	0.25	10,733.0	2,512.9	11.2	2,512.9	0.00	0.00	0.00
13,100.0	90.00	0.25	10,733.0	2,612.9	11.6	2,612.9	0.00	0.00	0.00
13,200.0	90.00	0.25	10,733.0	2,712.9	12.1	2,712.9	0.00	0.00	0.00
13,300.0	90.00	0.25	10,733.0	2,812.9	12.5	2,812.9	0.00	0.00	0.00
13,400.0	90.00	0.25	10,733.0	2,912.9	13.0	2,912.9	0.00	0.00	0.00
13,500.0	90.00	0.25	10,733.0	3,012.9	13.4	3,012.9	0.00	0.00	0.00
13,600.0	90.00	0.25	10,733.0	3,112.9	13.8	3,112.9	0.00	0.00	0.00
13,700.0	90.00	0.25	10,733.0	3,212.9	14.3	3,212.9	0.00	0.00	0.00
13,800.0	90.00	0.25	10,733.0	3,312.9	14.7	3,312.9	0.00	0.00	0.00
13,900.0	90.00	0.25	10,733.0	3,412.9	15.2	3,412.9	0.00	0.00	0.00
14,000.0	90.00	0.25	10,733.0	3,512.9	15.6	3,512.9	0.00	0.00	0.00
14,100.0	90.00	0.25	10,733.0	3,612.9	16.1	3,612.9	0.00	0.00	0.00
14,200.0	90.00	0.25	10,733.0	3,712.9	16.5	3,712.9	0.00	0.00	0.00
14,300.0	90.00	0.25	10,733.0	3,812.9	17.0	3,812.9	0.00	0.00	0.00
14,400.0	90.00	0.25	10,733.0	3,912.9	17.4	3,912.9	0.00	0.00	0.00
14,500.0	90.00	0.25	10,733.0	4,012.9	17.8	4,012.9	0.00	0.00	0.00
14,600.0	90.00	0.25	10,733.0	4,112.9	18.3	4,112.9	0.00	0.00	0.00
14,700.0	90.00	0.25	10,733.0	4,212.9	18.7	4,212.9	0.00	0.00	0.00
14,800.0	90.00	0.25	10,733.0	4,312.9	19.2	4,312.9	0.00	0.00	0.00
14,900.0	90.00	0.25	10,733.0	4,412.9	19.6	4,412.9	0.00	0.00	0.00
15,000.0	90.00	0.25	10,733.0	4,512.9	20.1	4,512.9	0.00	0.00	0.00
15,100.0	90.00	0.25	10,733.0	4,612.9	20.5	4,612.9	0.00	0.00	0.00
15,200.0	90.00	0.25	10,733.0	4,712.9	21.0	4,712.9	0.00	0.00	0.00
15,209.1	90.00	0.25	10,733.0	4,722.0	21.0	4,722.0	0.00	0.00	0.00

Planning Report

Database:	Hobbs	Local Co-ordinate Reference:	Site Hoss 2 W2PA Fed Com #1H
Company:	Mewbourne Oil Company	TVD Reference:	WELL @ 2973.0usft (Original Well Elev)
Project:	Eddy County, New Mexico	MD Reference:	WELL @ 2973.0usft (Original Well Elev)
Site:	Hoss 2 W2PA Fed Com #1H	North Reference:	Grid
Well:	Sec 2, T25S, R28E	Survey Calculation Method:	Minimum Curvature
Wellbore:	BHL: 330' FNL & 450' FEL		
Design:	Design #1		

Planned Survey

Measured Depth (usft)	Inclination (°)	Azimuth (°)	Vertical Depth (usft)	+N/-S (usft)	+E/-W (usft)	Vertical Section (usft)	Dogleg Rate (°/100usft)	Build Rate (°/100usft)	Turn Rate (°/100usft)
BHL: 330' FNL & 450' FEL									

Design Targets

Target Name - hit/miss target - Shape	Dip Angle (°)	Dip Dir. (°)	TVD (usft)	+N/-S (usft)	+E/-W (usft)	Northing (usft)	Easting (usft)	Latitude	Longitude
SL: 185' FSL & 450' FEL - plan hits target center - Point	0.00	0.00	0.0	0.0	0.0	419,310.00	587,548.00	32° 9' 8.942 N	104° 3' 1.609 W
KOP @ 10160' - plan hits target center - Point	0.00	0.00	10,160.0	0.0	0.0	419,310.00	587,548.00	32° 9' 8.942 N	104° 3' 1.609 W
First Take Point: 330' FS - plan hits target center - Point	0.00	0.00	10,541.0	145.0	0.6	419,455.00	587,548.60	32° 9' 10.377 N	104° 3' 1.598 W
BHL: 330' FNL & 450' FEL - plan hits target center - Point	0.00	0.00	10,733.0	4,722.0	21.0	424,032.00	587,569.00	32° 9' 55.672 N	104° 3' 1.220 W
LP: 758' FSL & 450' FEL - plan hits target center - Point	0.00	0.00	10,733.0	573.0	2.5	419,883.00	587,550.50	32° 9' 14.612 N	104° 3' 1.562 W

Notes Regarding Blowout Preventer

Mewbourne Oil Company

Hoss 2 W2PA Fed Com #1H

185' FSL & 450' FEL (SHL)

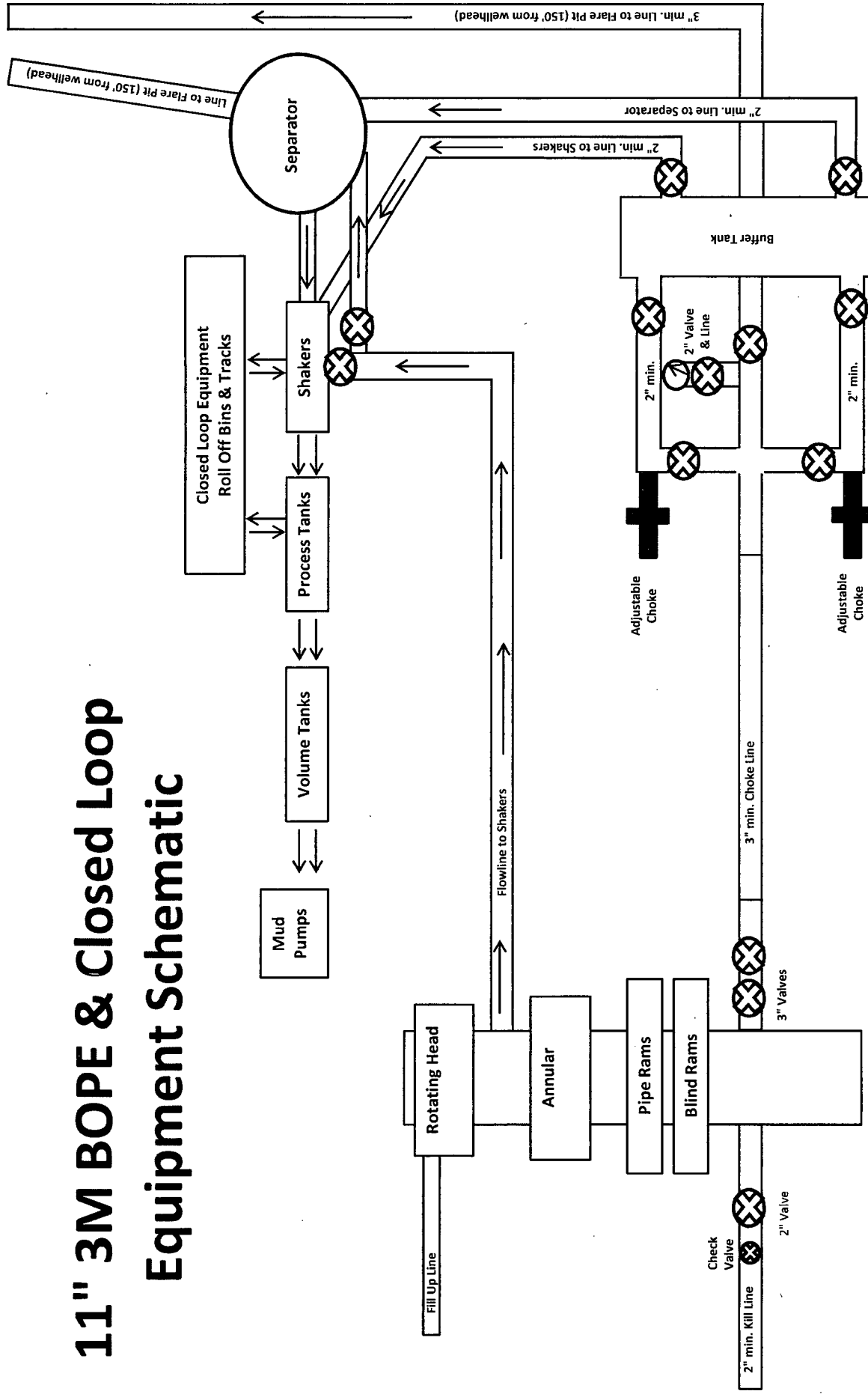
Sec 2-T25S-R28E

Eddy County, New Mexico

- I. Drilling nipple (bell nipple) to be constructed so that it can be removed without the use of a welder through the opening of the rotary table, with minimum internal diameter equal to blowout preventer bore.
- II. Blowout preventer and all fittings must be in good condition with a minimum 2000 psi working pressure on 13 3/8" casing and ~~3000~~ ⁵⁰⁰⁰ psi working pressure on 9 5/8" & 7" casing.
- III. Safety valve must be available on the rig floor at all times with proper connections to install in the drill string. Valve must be full bore with minimum ~~3000~~ ⁵⁰⁰⁰ psi working pressure.
- IV. Equipment through which bit must pass shall be at least as large as internal diameter of the casing.
- V. A kelly cock shall be installed on the kelly at all times.

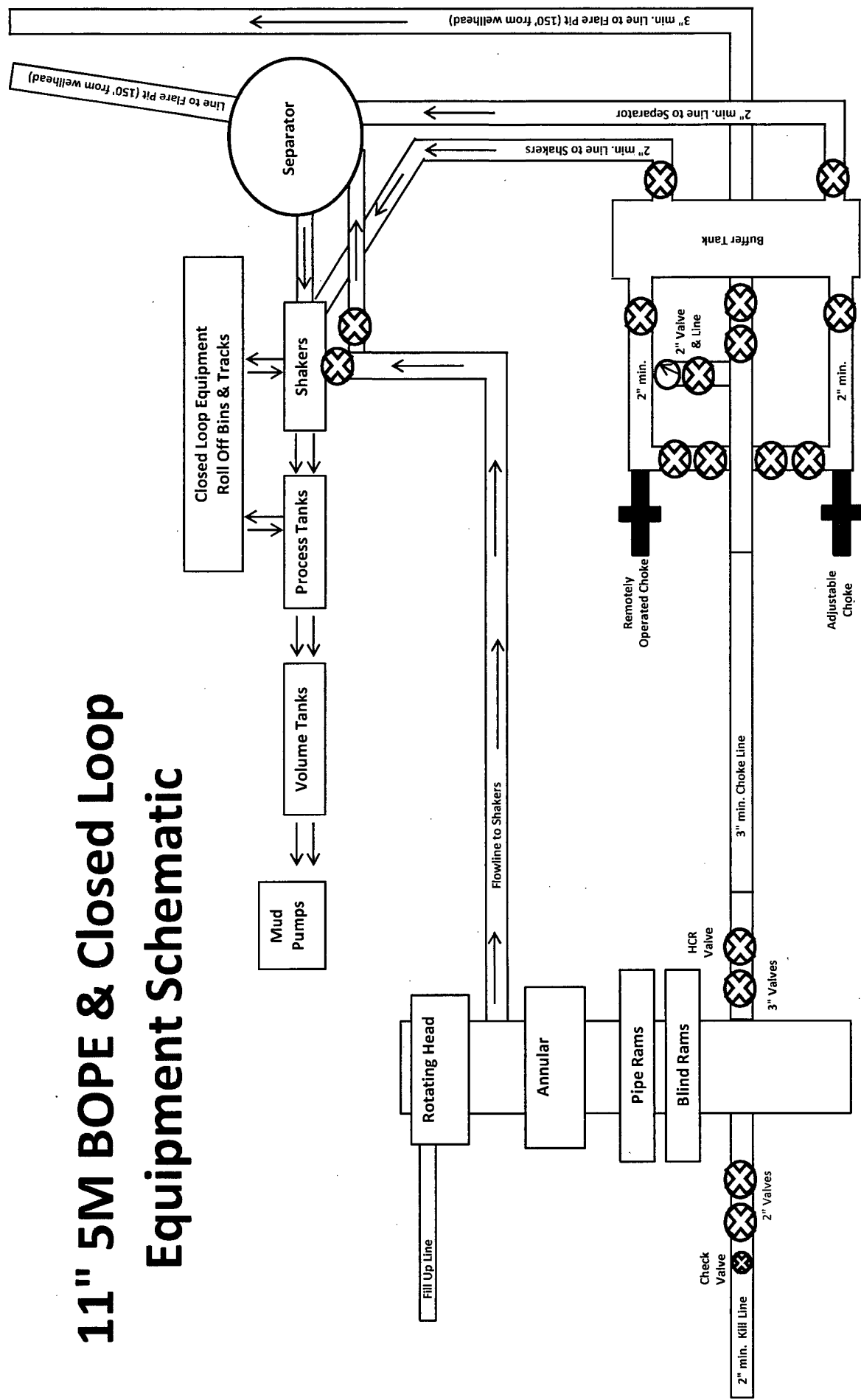
Blowout preventer closing equipment to include an accumulator of at least 40 gallon capacity, two independent sources of pressure on closing unit, and meet all other API specifications.

11" 3M BOPE & Closed Loop Equipment Schematic



Note: All valves & lines on choke manifold are 3" unless otherwise noted. Exact manifold configuration may vary.

11" 5M BOPE & Closed Loop Equipment Schematic



Note: All valves & lines on choke manifold are 3" unless otherwise noted. Exact manifold configuration may vary.

13 5/8" 2M BOPE & Closed Loop Equipment Schematic

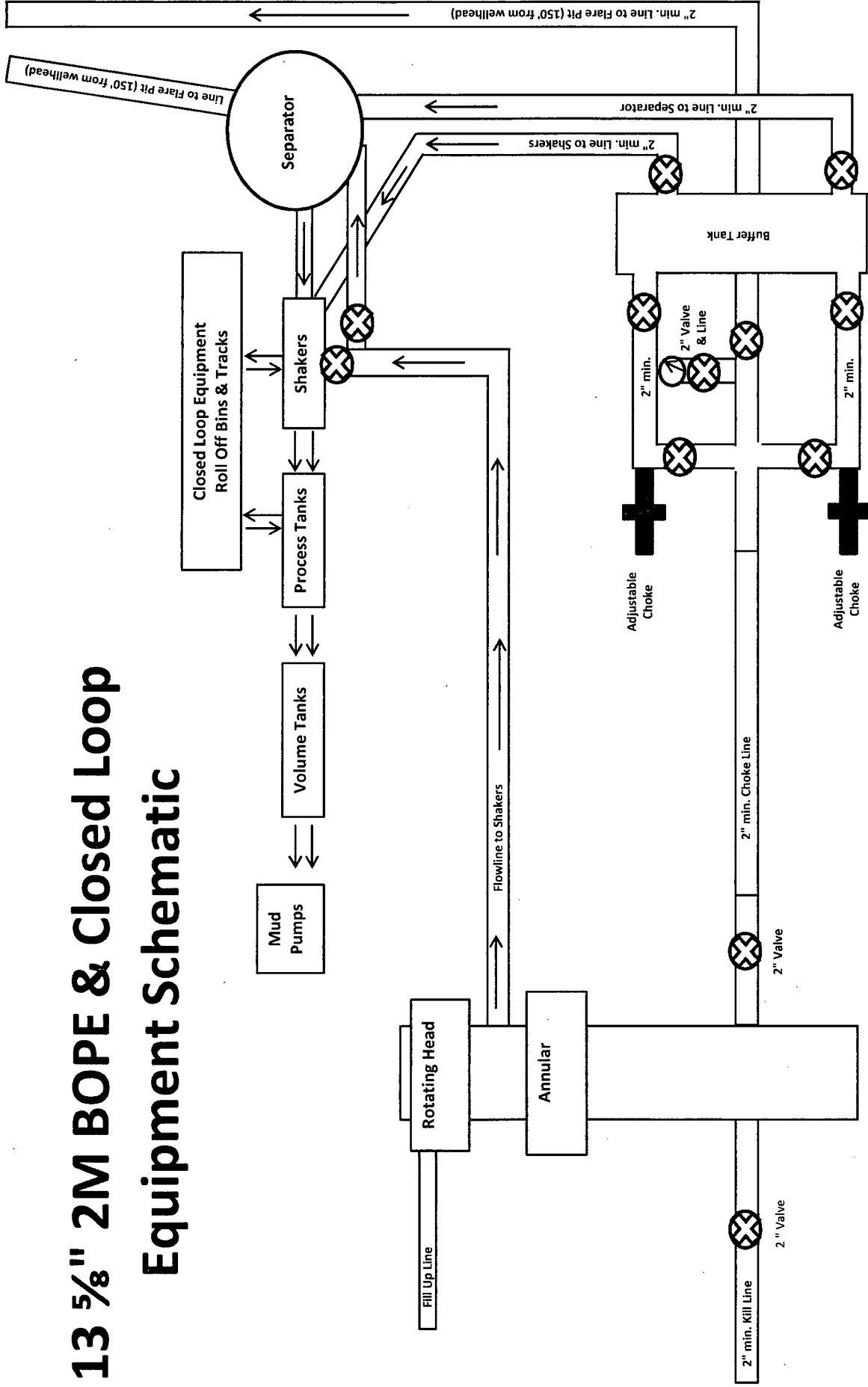


Exhibit 2A

Well Name: Hoss 2 W2PA Fed Com #1H



GATES E & S NORTH AMERICA, INC.
134 44TH STREET
CORPUS CHRISTI, TEXAS 78405

PHONE: 361-887-9807
FAX: 361-887-0812
EMAIL: Tim.Cantu@gates.com
WEB: www.gates.com

10K CEMENTING ASSEMBLY PRESSURE TEST CERTIFICATE

Customer :	AUSTIN DISTRIBUTING	Test Date:	4/30/2015
Customer Ref. :	4060578	Hose Serial No.:	D-043015-7
Invoice No. :	500506	Created By:	JUSTIN CROPPER

Product Description: 10K3.548.0CK4.1/1610KFLGE/E LE

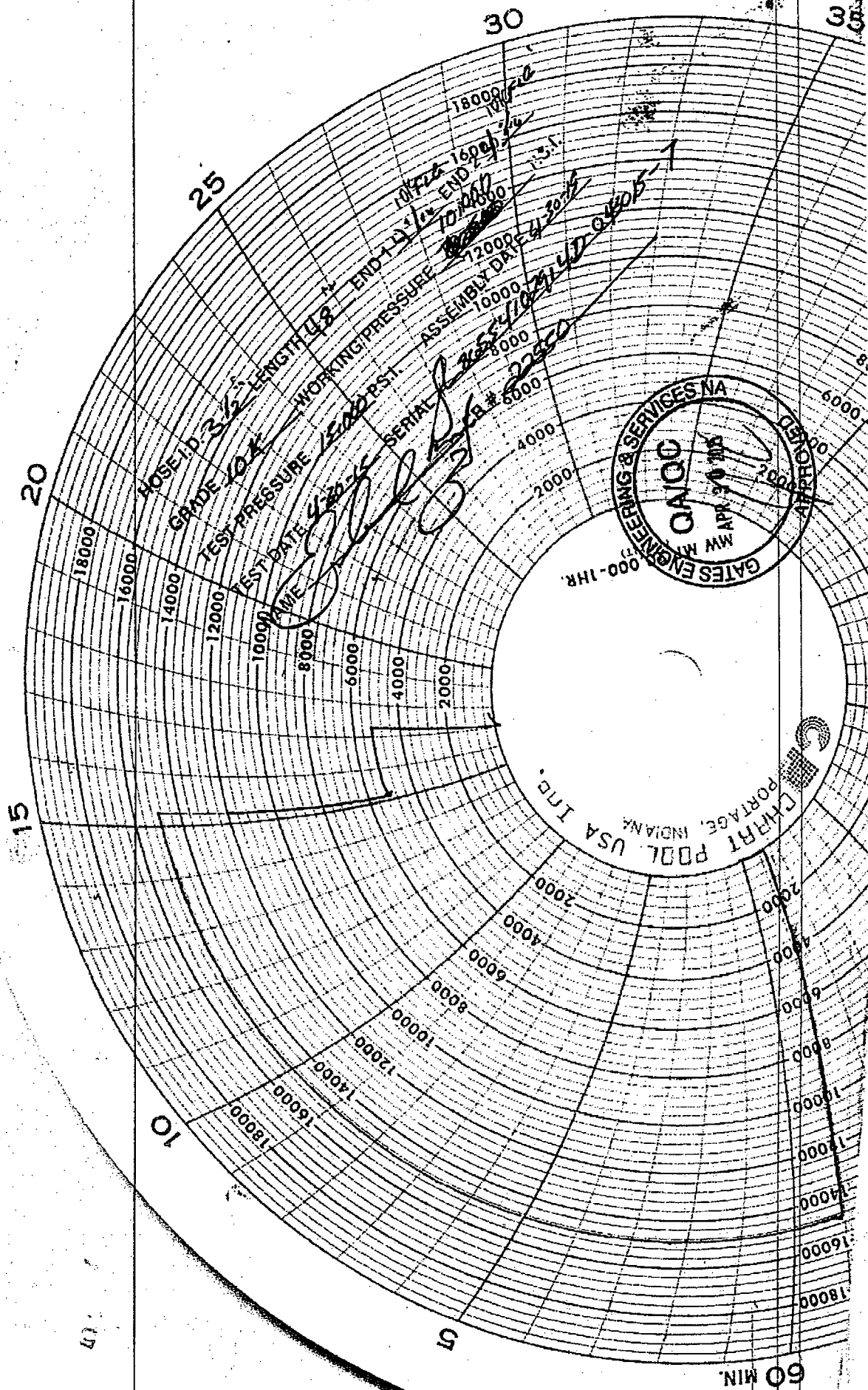
End Fitting 1 :	4 1/16 10K FLG	End Fitting 2 :	4 1/16 10K FLG
Gates Part No. :	4773-6290	Assembly Code :	L36554102914D-043015-7
Working Pressure :	10,000 PSI	Test Pressure :	15,000 PSI

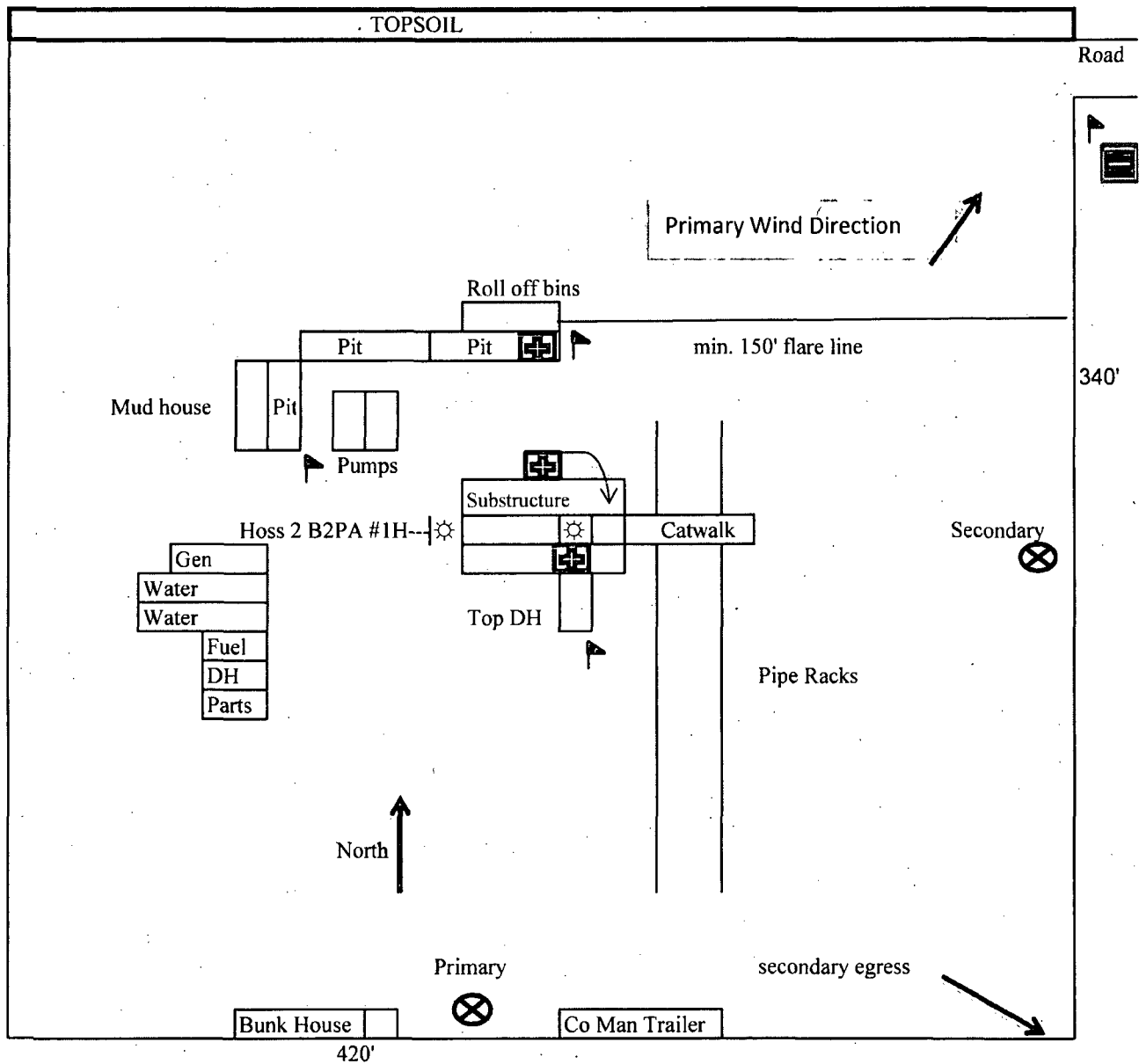
Gates E & S North America, Inc. certifies that the following hose assembly has been tested to the Gates Oilfield Roughneck Agreement/Specification requirements and passed the 15 minute hydrostatic test per API Spec 7K/Q1, Fifth Edition, June 2010, Test pressure 9.6.7 and per Table 9 to 15,000 psi in accordance with this product number. Hose burst pressure 9.6.7.2 exceeds the minimum of 2.5 times the working pressure per Table 9.

Quality Manager :	QUALITY	Production:	PRODUCTION
Date :	4/30/2015	Date :	4/30/2015
Signature :		Signature :	

Form PTC - 01 Rev.02







Mewbourne Oil Company
 Hoss 2 W2PA Fed Com #1H
 185' FSL & 450' FEL
 Sec. 2 T25S R28E
 Eddy County, NM



= Warning Signs



= Wind Markers



= H2S Monitors



= Safety Stations

Hydrogen Sulfide Drilling Operations Plan

Mewbourne Oil Company
Hoss 2 W2PA Fed Com #1H
185' FSL & 450' FEL
Sec 2-T25S-R28E
Eddy County, New Mexico

1. General Requirements

Rule 118 does not apply to this well because MOC has researched this area and no high concentrations of H₂S were found. MOC will have on location and working all H₂S safety equipment before the Delaware formation for purposes of safety and insurance requirements.

2. Hydrogen Sulfide Training

All personnel, whether regularly assigned, contracted, or employed on an unscheduled basis, will have received training from a qualified instructor in the following areas prior to entering the drilling pad area of the well:

1. The hazards and characteristics of hydrogen sulfide gas.
2. The proper use of personal protective equipment and life support systems.
3. The proper use of hydrogen sulfide detectors, alarms, warning systems, briefing areas, evacuation procedures.
4. The proper techniques for first aid and rescue operations.

Additionally, supervisory personnel will be trained in the following areas:

- 1 The effects of hydrogen sulfide on metal components. If high tensile tubular systems are utilized, supervisory personnel will be trained in their special maintenance requirements.
- 2 Corrective action and shut in procedures, blowout prevention, and well control procedures while drilling a well.
- 3 The contents of the Hydrogen Sulfide Drilling Operations Plan.

There will be an initial training session prior to encountering a known hydrogen sulfide source. The initial training session shall include a review of the site specific Hydrogen Sulfide Drilling Operations Plan.

3. Hydrogen Sulfide Safety Equipment and Systems

All hydrogen sulfide safety equipment and systems will be installed, tested, and operational prior to drilling below the 9 5/8" intermediate casing.

1. Well Control Equipment
 - A. Choke manifold with minimum of one adjustable choke/remote choke.
 - B. Blowout preventers equipped with blind rams and pipe rams to accommodate all pipe sizes with properly sized closing unit
 - C. Auxiliary equipment including annular type blowout preventer.
2. Protective Equipment for Essential Personnel

Thirty minute self contained work unit located in the dog house and at briefing areas.

Additionally: If H₂S is encountered in concentrations less than 10 ppm, fans will be placed in work areas to prevent the accumulation of hazardous amounts of poisonous gas. If higher concentrations of H₂S are detected the well will be shut in and a rotating head, mud/gas separator, remote choke and flare line with igniter will be installed.

3. Hydrogen Sulfide Protection and Monitoring Equipment

Two portable hydrogen sulfide monitors positioned on location for optimum coverage and detection. The units shall have audible sirens to notify personnel when hydrogen sulfide levels exceed 20 PPM.

4. Visual Warning Systems

A. Wind direction indicators as indicated on the wellsite diagram.

B. Caution signs shall be posted on roads providing access to location. Signs shall be painted a high visibility color with lettering of sufficient size to be readable at reasonable distances from potentially contaminated areas.

4. **Mud Program**

The mud program has been designed to minimize the amount of hydrogen sulfide entrained in the mud system. Proper mud weight, safe drilling practices, and the use of hydrogen sulfide scavengers will minimize hazards while drilling the well.

5. **Metallurgy**

All tubular systems, wellheads, blowout preventers, drilling spools, kill lines, choke manifolds, and valves shall be suitable for service in a hydrogen sulfide environment when chemically treated.

6. **Communications**

State & County Officials phone numbers are posted on rig floor and supervisors trailer. Communications in company vehicles and toolpushers are either two way radios or cellular phones.

7. **Well Testing**

Drill stem testing is not an anticipated requirement for evaluation of this well. If a drill stem test is required, it will be conducted with a minimum number of personnel in the immediate vicinity. The test will be conducted during daylight hours only.

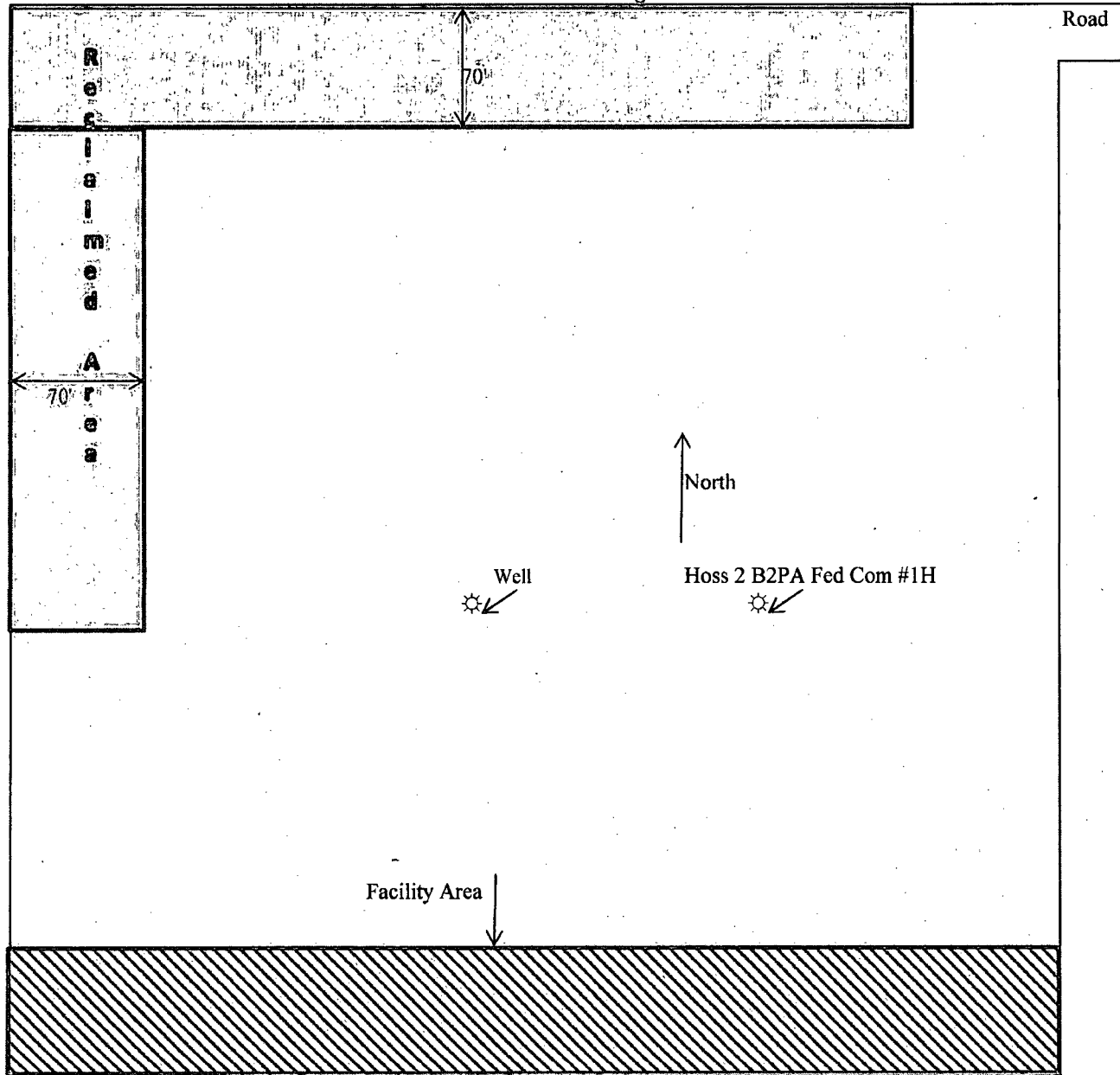
8. **Emergency Phone Numbers**

Eddy County Sheriff's Office	911 or 575-887-7551
Ambulance Service	911 or 575-885-2111
Carlsbad Fire Dept	911 or 575-885-2111
Loco Hills Volunteer Fire Dept.	911 or 575-677-3266
Closest Medical Facility - Columbia Medical Center of Carlsbad	575-492-5000

Mewbourne Oil Company	Hobbs District Office	575-393-5905
	Fax	575-397-6252
	2nd Fax	575-393-7259

District Manager	Robin Terrell	575-390-4816
Drilling Superintendent	Frosty Lathan	575-390-4103
	Bradley Bishop	575-390-6838
Drilling Foreman	Wesley Noseff	575-441-0729

Exhibit "6"
Interim Reclamation Diagram



Mewbourne Oil Company
Hoss 2 W2PA Fed Com #1H
185' FSL & 450' FEL
Sec 2 T25S R28E
Eddy County, NM

SURFACE USE PLAN OF OPERATIONS
MEWBOURNE OIL COMPANY

Hoss 2 W2PA Fed Com #1H
185 FSL & 450 FEL (SHL)
Sec. 2 – T25S-R28E
Eddy County, New Mexico

Introduction

This plan is submitted with Form 3160-3, Application for Permit to Drill, Covering the above described well. The purpose of this plan is to describe the location of the proposed well, the proposed construction activities and operations plan, the magnitude of the surface disturbance involved, and the procedures to be followed in restoring the surface so that a complete appraisal can be made of the environmental impact associated with the proposed operations.

1. Existing Roads

- a. The existing access road route to the proposed project is depicted on Exhibit 3E. Improvements to the driving surface will be done where necessary. No new surface disturbance will be done, unless otherwise noted in the New or Reconstructed Access Roads section of this surface use plan.
- b. The existing oil and gas roads utilized to access the proposed project will be maintained by crowning, clearing ditches, and fixing potholes. All existing structures on the entire access route such as cattleguards, other range improvement projects, culverts, etc. will be properly repaired or replaced if they are damaged or have deteriorated beyond practical use.
- c. Mewbourne Oil Co. will cooperate with other operators in the maintenance of lease roads.

2. New or Reconstructed Access Roads

- a. An access road will be needed for this proposed project. See the survey plat(s) for the location of the access road.
- b. The length of access road needed to be constructed for this proposed project is about 655.59 feet.
- c. The access road will be 14 feet wide and will be constructed with 6 inches of compacted caliche. A 25 foot wide area would be needed to construct the road.
- d. When the road travels on fairly level ground, the road will be crowned and ditched with a 2% slope from the tip of the road crown to the edge of the driving surface. The ditches will be 3 feet wide with 3:1 slopes.
- e. The access road will be constructed with a ditch on each side of the road.
- f. The maximum grade for the access road will be 5 percent.
- g. If the road is longer than 1,000 feet, turnouts will be constructed with an interval of 1,000 feet. Turnouts will be intervisible and will be 10 feet wide and 100 feet long.
- h. Low water crossings will be constructed where drainages cross the access road.

- i. Construction of new or reconstructed roads, on surface under the jurisdiction of the Bureau of Land Management will include ditching, draining, crowning and capping or sloping and dipping the roadbed as necessary to provide a well-drained and safe road.
- j. An appropriately sized cattle guard will be installed where the proposed access road crosses a fence line.
- k. A BLM right-of-way grant is needed for the construction of this access road and one will be acquired prior to construction.
- l. Lead-off ditches will be constructed for the proposed access road, but will not extend more than 15 feet outside the road edge.

3. Location of Existing Wells

- a. Exhibit 4, 4A of the APD depicts all known wells within a one mile radius of the proposed well.

4. Location of Existing and/or Proposed Production Facilities

- a. All permanent, lasting more than 6 months, above ground structures including but not limited to pumpjacks, storage tanks, pipeline risers, meter housing, etc. that are not subject to safety requirements will be painted a non-reflective paint color that blends in with the surrounding landscape. The paint color will be one of the colors from the BLM Standard Environmental Colors chart selected by the BLM authorized officer.
- b. All proposed production facilities that are located on the well pad will be strategically placed to allow for maximum interim reclamation, recontouring, and revegetation of the well location.
- c. Production from the proposed well will be located on the South side of location.
- d. If any plans change regarding the production facility or other infrastructure (pipeline, electric line, etc.), we will submit a sundry notice or right of way (if applicable) prior to installation of construction.
- e. An electric line will be applied for through a sundry notice or BLM right of way at a later date.

5. Location and Types of Water

- a. The well will be drilled with a combination of fresh water and brine water based mud systems. The water will be obtained from commercial suppliers in the area and/or hauled to the location by transport trucks over existing and proposed roads as identified above in this surface use plan.

6. Construction Materials

- a. Construction material that will be used to build the well pad and road will be caliche.
- b. The construction contractor will be solely responsible for securing construction materials required for this operation and paying any royalties that may be required on those materials.
- c. Obtaining caliche: One way of obtaining caliche to build locations and roads will be by “turning over” the location. This means, caliche will be obtained from the actual well site. A caliche permit will be obtained from BLM prior to obtaining caliche. Amount of caliche will vary for each pad. The procedure below has been approved by BLM personnel:
 - i. The top 6 inches of topsoil is pushed off and stockpiled along the side of the location.
 - ii. An approximate 160’ X 160’ area is used within the proposed well site to remove caliche.
 - iii. Subsoil is removed and stockpiled within the surveyed well pad.
 - iv. When caliche is found, material will be stock piled within the pad site to build the location and road.
 - v. Then subsoil is pushed back in the hole and caliche is spread accordingly across entire location and road.
 - vi. Once well is drilled, the stock piled top soil will be used for interim reclamation and spread along areas where caliche is picked up and the location size is reduced.
 - vii. Neither caliche, nor subsoil will be stock piled outside of the well pad. Topsoil will be stockpiled along the edge of the pad as depicted in the Well Site Layout or survey plat.

In the event that no caliche is found onsite, caliche will be hauled in from a BLM, state, or private mineral pit. A BLM mineral material permit will be acquired prior to obtaining any mineral material from BLM pits or land.

7. Methods of Handling Waste

- a. The well will be drilled utilizing a closed loop system. Drill cuttings will be properly contained in steel tanks and taken to an NMOCD approved disposal facility.
- b. Drilling fluids and produced oil and water from the well during completion operations will be stored safely in closed containers and disposed of properly in an NMOCD approved disposal facility.
- c. Garbage and trash produced during drilling and completion operations will be collected in trash containers and disposed of properly at a state approved site. All trash on and around the well site will be collected for disposal.

- d. All human waste and grey water from drilling and completion operations will be properly contained and disposed of properly at a disposal facility.
- e. After drilling and completion operations, trash, chemicals, salts, frac sand and other waste material will be removed and disposed of properly at a disposal site.

8. Ancillary Facilities

- a. No ancillary facilities will be needed for this proposed project.

9. Well Site Layout

- a. The proposed drilling pad to be built was staked and surveyed by a professional surveyor. The attached survey plat of the well site depicts the drilling pad layout as staked.
- b. A title of a well site diagram is **Exhibit 5**. This diagram depicts the rig layout.
- c. In areas to be heavily disturbed, the top 6 inches of soil material, will be stripped and stockpiled on the perimeter of the well location to keep topsoil viable, and to make redistribution of topsoil more efficient during interim reclamation. Stockpiled topsoil should include vegetative material. Topsoil will be clearly segregated and stored separately from subsoils. Contaminated soil will not be stockpiled, but properly treated and handled prior to topsoil salvaging.

10. Plans for Surface Reclamation

Within 90 days of cessation of drilling and completion operations, all equipment not necessary for production operations will be removed. The location will be cleaned of all trash and junk to assure the well site is left as aesthetically pleasing as reasonably possible. Interim reclamation will be accomplished within 6 months of well completion. Final reclamation will be accomplished within 6 months of abandonment.

Interim Reclamation (well pad)

- i. Interim reclamation will be performed on the well site after the well is drilled and completed. **Exhibit 6** depicts the location and dimensions of the planned interim reclamation for the well site.
- ii. The well location and surrounding areas will be cleared of, and maintained free of, all materials, trash, and equipment not required for production.
- iii. In areas planned for interim reclamation, all the surfacing material will be removed and returned to the original mineral pit or recycled to repair or build roads and well pads.

blends with the surrounding topography as much as possible. Where applicable, the fill material of the well pad will be backfilled into the cut to bring the area back to the original contour. The interim cut and fill slopes prior to re-seeding will not be steeper than a 3:1 ratio, unless the adjacent native topography is steeper. Note: Constructed slopes may be much steeper during drilling, but will be recontoured to the above ratios during interim reclamation.

- v. Topsoil will be evenly respread and aggressively revegetated over the entire disturbed area not needed for all-weather operations including cuts & fills. To seed the area, the proper BLM seed mixture, free of noxious weeds, will be used. Final seedbed preparation will consist of contour cultivating to a depth of 4 to 6 inches within 24 hours prior to seeding, dozer tracking, or other imprinting in order to break the soil crust and create seed germination micro-sites.
- vi. Proper erosion control methods will be used on the area to control erosion, runoff and siltation of the surrounding area.
- vii. The interim reclamation will be monitored periodically to ensure that vegetation has reestablished and that erosion and invasive/noxious weeds are controlled.

b. Final Reclamation (well pad, buried pipelines, etc.)

- i. Prior to final reclamation procedures, the well pad, road, and surrounding area will be cleared of material, trash, and equipment.
- ii. All surfacing material will be removed and returned to the original mineral pit or recycled to repair or build roads and well pads.
- iii. All disturbed areas, including roads, pipelines, pads, production facilities, and interim reclaimed areas will be recontoured to the contour existing prior to initial construction or a contour that blends indistinguishably with the surrounding landscape. Topsoil that was spread over the interim reclamation areas will be stockpiled prior to recontouring. The topsoil will be redistributed evenly over the entire disturbed site to ensure successful revegetation.
- iv. After all the disturbed areas have been properly prepared, the areas will be seeded with the proper BLM seed mixture, free of noxious weeds. Final seedbed preparation will consist of contour cultivating to a depth of 4 to 6 inches within 24 hours prior to seeding, dozer tracking, or other imprinting in order to break the soil crust and create seed germination micro-sites.
- v. Proper erosion control methods will be used on the entire area to control erosion, runoff and siltation of the surrounding area.
- vi. All unused equipment and structures including pipelines, electric line poles, tanks, etc. that serviced the well will be removed.

- vii. All reclaimed areas will be monitored periodically to ensure that revegetation occurs, that the area is not redisturbed, and that erosion and invasive/noxious weeds are controlled.

11. Surface Ownership

- a. The surface ownership of the proposed project is State of NM
- b. An oil and gas lease is held by MOC. VB-1417.

12. Other Information

- a. No other information is needed at this time.

13. Operator's Representative

- a. Through APD approval, drilling, completion and production operations:

Robin Terrell, District Manager

Mewbourne Oil Company

PO Box 5270

Hobbs, NM 88241

575-393-5905

Mewbourne Oil Company

PO Box 5270
Hobbs, NM 88241
(575) 393-5905

I hereby certify that I, or someone under my direct supervision, have inspected the drill site and access route proposed herein; that I am familiar with the conditions which currently exist; that I have full knowledge of State and Federal laws applicable to this operation; that the statements made in this APD package are, to the best of my knowledge, true and correct; and that the work associated with the operations proposed herein will be performed in conformity with this APD package and the terms and conditions under which it is approved. I also certify that I, or the company I represent, am responsible for the operations conducted under this application. These statements are subject to the provisions of 18 U.S.C. 1001 for the filing of false statements.

Executed this 16 day of July, 2015.

Name: Robin Terrell

Signature: B. Terrell

Position Title: Hobbs District Manager

Address: PO Box 5270, Hobbs NM 88241

Telephone: 575-393-5905

E-mail: rterrell@mewbourne.com

PECOS DISTRICT CONDITIONS OF APPROVAL

OPERATOR'S NAME:	Mewbourne Oil Co
LEASE NO.:	NM134867
WELL NAME & NO.:	1H-Hoss 2 W2PA Fed Com
SURFACE HOLE FOOTAGE:	185'/S & 450'/E
BOTTOM HOLE FOOTAGE	330'/N & 450'/E
LOCATION:	Section 2, T. 25 S., R. 28 E., NMPM
COUNTY:	Eddy County, New Mexico

TABLE OF CONTENTS

Standard Conditions of Approval (COA) apply to this APD. If any deviations to these standards exist or special COAs are required, the section with the deviation or requirement will be checked below.

- ☐ **General Provisions**
- ☐ **Permit Expiration**
- ☐ **Archaeology, Paleontology, and Historical Sites**
- ☐ **Noxious Weeds**
- ☒ **Special Requirements**
 - Communitization Agreement
 - Cave/Karst
- ☐ **Construction**
 - Notification
 - Topsoil
 - Closed Loop System
 - Federal Mineral Material Pits
 - Well Pads
 - Roads
- ☐ **Road Section Diagram**
- ☒ **Drilling**
 - Cement Requirements
 - High Cave/Karst
 - Logging Requirements
 - Waste Material and Fluids
- ☐ **Production (Post Drilling)**
 - Well Structures & Facilities
- ☐ **Interim Reclamation**
- ☐ **Final Abandonment & Reclamation**

I. GENERAL PROVISIONS

The approval of the Application For Permit To Drill (APD) is in compliance with all applicable laws and regulations: 43 Code of Federal Regulations 3160, the lease terms, Onshore Oil and Gas Orders, Notices To Lessees, New Mexico Oil Conservation Division (NMOCD) Rules, National Historical Preservation Act As Amended, and instructions and orders of the Authorized Officer. Any request for a variance shall be submitted to the Authorized Officer on Form 3160-5, Sundry Notices and Report on Wells.

II. PERMIT EXPIRATION

If the permit terminates prior to drilling and drilling cannot be commenced within 60 days after expiration, an operator is required to submit Form 3160-5, Sundry Notices and Reports on Wells, requesting surface reclamation requirements for any surface disturbance. However, if the operator will be able to initiate drilling within 60 days after the expiration of the permit, the operator must have set the conductor pipe in order to allow for an extension of 60 days beyond the expiration date of the APD. (Filing of a Sundry Notice is required for this 60 day extension.)

III. ARCHAEOLOGICAL, PALEONTOLOGY & HISTORICAL SITES

Any cultural and/or paleontological resource discovered by the operator or by any person working on the operator's behalf shall immediately report such findings to the Authorized Officer. The operator is fully accountable for the actions of their contractors and subcontractors. The operator shall suspend all operations in the immediate area of such discovery until written authorization to proceed is issued by the Authorized Officer. An evaluation of the discovery shall be made by the Authorized Officer to determine the appropriate actions that shall be required to prevent the loss of significant cultural or scientific values of the discovery. The operator shall be held responsible for the cost of the proper mitigation measures that the Authorized Officer assesses after consultation with the operator on the evaluation and decisions of the discovery. Any unauthorized collection or disturbance of cultural or paleontological resources may result in a shutdown order by the Authorized Officer.

IV. NOXIOUS WEEDS

The operator shall be held responsible if noxious weeds become established within the areas of operations. Weed control shall be required on the disturbed land where noxious weeds exist, which includes the roads, pads, associated pipeline corridor, and adjacent land affected by the establishment of weeds due to this action. The operator shall consult with the Authorized Officer for acceptable weed control methods, which include following EPA and BLM requirements and policies.

V. SPECIAL REQUIREMENT(S)

Communitization Agreement

- The operator will submit a Communitization Agreement to the Carlsbad Field Office, 620 E Greene St. Carlsbad, New Mexico 88220, at least 90 days before the anticipated date of first production from a well subject to a spacing order issued by the New Mexico Oil Conservation Division. The Communitization Agreement will include the signatures of all working interest owners in all Federal and Indian leases subject to the Communitization Agreement (i.e., operating rights owners and lessees of record), or certification that the operator has obtained the written signatures of all such owners and will make those signatures available to the BLM immediately upon request.
- If the operator does not comply with this condition of approval, the BLM may take enforcement actions that include, but are not limited to, those specified in 43 CFR 3163.1.
- In addition, the well sign shall include the surface and bottom hole lease numbers. When the Communitization Agreement number is known, it shall also be on the sign.

Cave/Karst Surface Mitigation

The following stipulations will be applied to minimize impacts during construction, drilling and production.

Construction:

In the advent that any underground voids are opened up during construction activities, construction activities will be halted and the BLM will be notified immediately.

No Blasting:

No blasting will be utilized for pad construction. The pad will be constructed and leveled by adding the necessary fill and caliche.

Pad Berming:

The pad will be bermed to prevent oil, salt, and other chemical contaminants from leaving the pad.

Closed Mud System Using Steel Tanks with All Fluids and Cuttings Hauled Off.

A closed mud system using steel tanks for all cuttings and fluids is required. All fluids and cuttings will be hauled off site for disposal. No pits are allowed.

Tank Battery Liners and Berms:

Tank battery locations will be lined and bermed. A 20 mil permanent liner will be installed with a 4 oz. felt backing to prevent tears or punctures. Tank battery berms must be large enough to contain 1 ½ times the content of the largest tank.

Leak Detection System:

A method of detecting leaks is required. The method could incorporate gauges to measure loss, siting valves and lines so they can be visually inspected, or installing electronic sensors to alarm when a leak is present. Leak detection plan will be submitted to BLM for approval.

Automatic Shut-off Systems:

Automatic shut off, check valves, or similar systems will be installed for pipelines and tanks to minimize the effects of catastrophic line failures used in production or drilling.

Cave/Karst Subsurface Mitigation

The following stipulations will be applied to protect cave/karst and ground water concerns:

Rotary Drilling with Fresh Water:

Fresh water will be used as a circulating medium in zones where caves or karst features are expected. SEE ALSO: Drilling COAs for this well.

Directional Drilling:

Kick off for directional drilling will occur at least 100 feet below the bottom of the cave occurrence zone. SEE ALSO: Drilling COAs for this well.

Lost Circulation:

ALL lost circulation zones from the surface to the base of the cave occurrence zone will be logged and reported in the drilling report.

Regardless of the type of drilling machinery used, if a void of four feet or more and circulation losses greater than 70 percent occur simultaneously while drilling in any cave-bearing zone, the BLM will be notified immediately by the operator. The BLM will assess the situation and work with the operator on corrective actions to resolve the problem.

Abandonment Cementing:

Upon well abandonment in high cave karst areas additional plugging conditions of approval may be required. The BLM will assess the situation and work with the operator to ensure proper plugging of the wellbore.

Pressure Testing:

Annual pressure monitoring will be performed by the operator on all casing annuli and reported in a sundry notice. If the test results indicated a casing failure has occurred, remedial action will be undertaken to correct the problem to the BLM's approval.

VI. CONSTRUCTION

A. NOTIFICATION

The BLM shall administer compliance and monitor construction of the access road and well pad. Notify the Carlsbad Field Office at (575) 234-5909 at least 3 working days prior to commencing construction of the access road and/or well pad.

When construction operations are being conducted on this well, the operator shall have the approved APD and Conditions of Approval (COA) on the well site and they shall be made available upon request by the Authorized Officer.

B. TOPSOIL

The operator shall strip the top portion of the soil (root zone) from the entire well pad area and stockpile the topsoil along the edge of the well pad as depicted in the APD. The root zone is typically six (6) inches in depth. All the stockpiled topsoil will be redistributed over the interim reclamation areas. Topsoil shall not be used for berming the pad or facilities. For final reclamation, the topsoil shall be spread over the entire pad area for seeding preparation.

Other subsoil (below six inches) stockpiles must be completely segregated from the topsoil stockpile. Large rocks or subsoil clods (not evident in the surrounding terrain) must be buried within the approved area for interim and final reclamation.

C. CLOSED LOOP SYSTEM

Tanks are required for drilling operations: No Pits.

The operator shall properly dispose of drilling contents at an authorized disposal site.

D. FEDERAL MINERAL MATERIALS PIT

Payment shall be made to the BLM prior to removal of any federal mineral materials. Call the Carlsbad Field Office at (575) 234-5972.

E. WELL PAD SURFACING

Surfacing of the well pad is not required.

If the operator elects to surface the well pad, the surfacing material may be required to be removed at the time of reclamation. The well pad shall be constructed in a manner which creates the smallest possible surface disturbance, consistent with safety and operational needs.

F. EXCLOSURE FENCING (CELLARS & PITS)

Exclosure Fencing

The operator will install and maintain exclosure fencing for all open well cellars to prevent access to public, livestock, and large forms of wildlife before and after drilling operations until the pit is free of fluids and the operator initiates backfilling. (For examples of exclosure fencing design, refer to BLM's Oil and Gas Gold Book, Exclosure Fence Illustrations, Figure 1, Page 18.)

G. ON LEASE ACCESS ROADS

Road Width

The access road shall have a driving surface that creates the smallest possible surface disturbance and does not exceed fourteen (14) feet in width. The maximum width of surface disturbance, when constructing the access road, shall not exceed twenty-five (25) feet.

Surfacing

Surfacing material is not required on the new access road driving surface. If the operator elects to surface the new access road or pad, the surfacing material may be required to be removed at the time of reclamation.

Where possible, no improvements should be made on the unsurfaced access road other than to remove vegetation as necessary, road irregularities, safety issues, or to fill low areas that may sustain standing water.

The Authorized Officer reserves the right to require surfacing of any portion of the access road at any time deemed necessary. Surfacing may be required in the event the road deteriorates, erodes, road traffic increases, or it is determined to be beneficial for future field development. The surfacing depth and type of material will be determined at the time of notification.

Crowning

Crowning shall be done on the access road driving surface. The road crown shall have a grade of approximately 2% (i.e., a 1" crown on a 14' wide road). The road shall conform to Figure 1; cross section and plans for typical road construction.

Ditching

Ditching shall be required on both sides of the road.

Turnouts

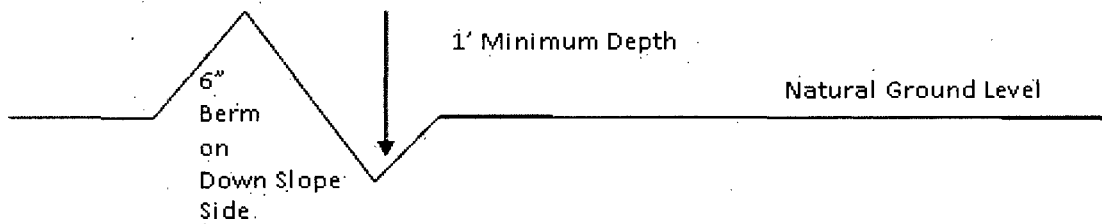
Vehicle turnouts shall be constructed on the road. Turnouts shall be intervisible with interval spacing distance less than 1000 feet. Turnouts shall conform to Figure 1; cross section and plans for typical road construction.

Drainage

Drainage control systems shall be constructed on the entire length of road (e.g. ditches, sidehill outslowing and insloping, lead-off ditches, culvert installation, and low water crossings).

A typical lead-off ditch has a minimum depth of 1 foot below and a berm of 6 inches above natural ground level. The berm shall be on the down-slope side of the lead-off ditch.

Cross Section of a Typical Lead-off Ditch



All lead-off ditches shall be graded to drain water with a 1 percent minimum to 3 percent maximum ditch slope. The spacing interval are variable for lead-off ditches and shall be determined according to the formula for spacing intervals of lead-off ditches, but may be amended depending upon existing soil types and centerline road slope (in %);

Formula for Spacing Interval of Lead-off Ditches

Example - On a 4% road slope that is 400 feet long, the water flow shall drain water into a lead-off ditch. Spacing interval shall be determined by the following formula:

$$400 \text{ foot road with } 4\% \text{ road slope: } \frac{400'}{4\%} + 100' = 200' \text{ lead-off ditch interval}$$

Cattleguards

An appropriately sized cattleguard sufficient to carry out the project shall be installed and maintained at fence/road crossings. Any existing cattleguards on the access road route shall be repaired or replaced if they are damaged or have deteriorated beyond practical use. The operator shall be responsible for the condition of the existing cattleguards that are in place and are utilized during lease operations.

Fence Requirement

Where entry is granted across a fence line, the fence shall be braced and tied off on both sides of the passageway prior to cutting. The operator shall notify the private surface landowner or the grazing allotment holder prior to crossing any fences.

Public Access

Public access on this road shall not be restricted by the operator without specific written approval granted by the Authorized Officer.

Construction Steps

1. Salvage topsoil
2. Construct road

3. Redistribute topsoil
4. Revegetate slopes

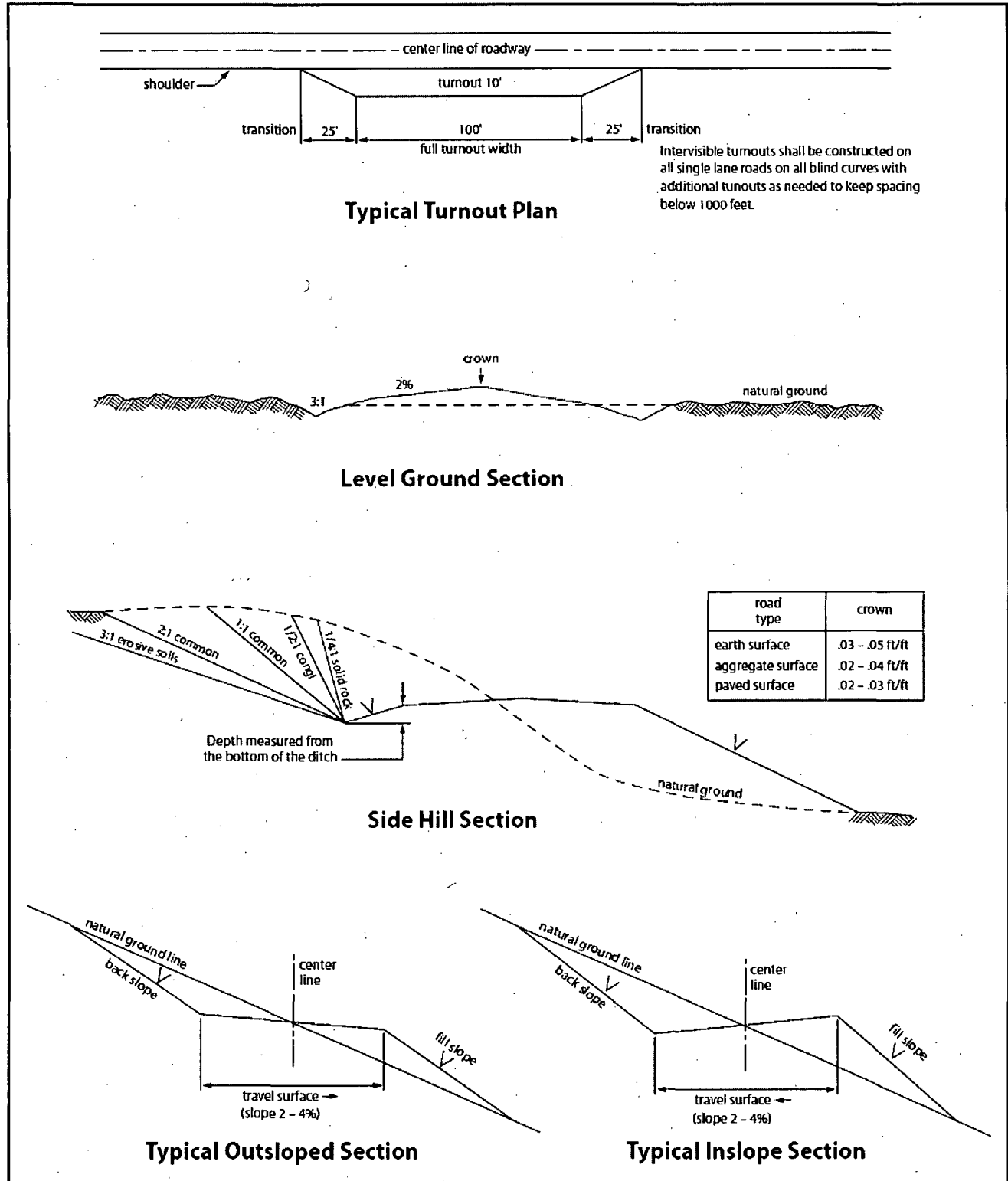


Figure 1. Cross-sections and plans for typical road sections representative of BLM resource or FS local and higher-class roads.

VII. DRILLING

A. DRILLING OPERATIONS REQUIREMENTS

The BLM is to be notified in advance for a representative to witness:

- a. Spudding well (minimum of 24 hours)
- b. Setting and/or Cementing of all casing strings (minimum of 4 hours)
- c. BOPE tests (minimum of 4 hours)

☒ **Eddy County**

Call the Carlsbad Field Office, 620 East Greene St., Carlsbad, NM 88220,
(575) 361-2822

1. **Operator has stated that Hydrogen Sulfide (H₂S) monitors shall be installed prior to drilling out the surface shoe. If H₂S is detected in concentrations greater than 100 ppm, the Hydrogen Sulfide area shall meet Onshore Order 6 requirements, which includes equipment and personnel/public protection items. If Hydrogen Sulfide is encountered, provide measured values and formations to the BLM.**
2. Unless the production casing has been run and cemented or the well has been properly plugged, the drilling rig shall not be removed from over the hole without prior approval. **If the drilling rig is removed without approval – an Incident of Non-Compliance will be written and will be a “Major” violation.**
3. Floor controls are required for 3M or Greater systems. These controls will be on the rig floor, unobstructed, readily accessible to the driller and will be operational at all times during drilling and/or completion activities. Rig floor is defined as the area immediately around the rotary table; the area immediately above the substructure on which the draw works is located, this does not include the dog house or stairway area.
4. **The record of the drilling rate along with the GR/N well log run from TD to surface (horizontal well – vertical portion of hole) shall be submitted to the BLM office as well as all other logs run on the borehole 30 days from completion. If available, a digital copy of the logs is to be submitted in addition to the paper copies. The Rustler top and top and bottom of Salt are to be recorded on the Completion Report.**

B. CASING

Changes to the approved APD casing program need prior approval if the items substituted are of lesser grade or different casing size or are Non-API. The Operator can exchange the components of the proposal with that of superior strength (i.e. changing from J-55 to N-80, or from 36# to 40#). Changes to the approved cement program need prior approval if the altered cement plan has less volume or strength or if the changes are substantial (i.e. Multistage tool, ECP, etc.). The initial wellhead installed on the well will remain on the well with spools used as needed.

Centralizers required on surface casing per Onshore Order 2.III.B.1.f.

Wait on cement (WOC) for Water Basin:

After cementing but before commencing any tests, the casing string shall stand cemented under pressure until both of the following conditions have been met: 1) cement reaches a minimum compressive strength of 500 psi at the shoe, 2) until cement has been in place at least 8 hours. WOC time will be recorded in the driller's log. See individual casing strings for details regarding lead cement slurry requirements.

No pea gravel permitted for remedial or fall back remedial without prior authorization from the BLM engineer.

High Cave/Karst

Possibility of water flows in the Salado and Castile.

Possibility of lost circulation in the Red Beds, Rustler, and Delaware.

A MINIMUM OF TWO CASING STRINGS CEMENTED TO SURFACE IS REQUIRED IN HIGH CAVE/KARST AREAS. THE CEMENT MUST BE IN A SOLID SHEATH. THEREFORE, ONE INCH OPERATIONS ARE NOT SUFFICIENT TO PROTECT CAVE KARST RESOURCES. A CASING DESIGN THAT HAS A ONE INCH JOB PERFORMED DOES NOT COUNT AS A SOLID SHEATH. ON A THREE STRING DESIGN; IF THE PRIMARY CEMENT JOB ON THE SURFACE CASING DOES NOT CIRCULATE, THEN THE NEXT TWO CASING STRINGS MUST BE CEMENTED TO SURFACE.

1. The **13-3/8** inch surface casing shall be set at approximately **425** feet (a minimum of 25 feet into the Rustler Anhydrite and above the salt) and cemented to the surface.
 - a. If cement does not circulate to the surface, the appropriate BLM office shall be notified and a temperature survey utilizing an electronic type temperature survey with surface log readout will be used or a cement bond log shall be run to verify the top of the cement. Temperature survey will be run a minimum of six hours after pumping cement and ideally between 8-10 hours after completing the cement job.
 - b. **Wait on cement (WOC) time for a primary cement job is to include the lead cement slurry.**
 - c. Wait on cement (WOC) time for a remedial job will be a minimum of 4 hours after bringing cement to surface or 500 pounds compressive strength, whichever is greater.
 - d. If cement falls back, remedial cementing will be done prior to drilling out that string.
2. The minimum required fill of cement behind the **9-5/8** inch intermediate casing, which shall be set at approximately **2600** feet (**basal anhydrite of the Castile formation**), is:

- ☒ Cement to surface. If cement does not circulate see B.1.a, c-d above. **Wait on cement (WOC) time for a primary cement job is to include the lead cement slurry due to cave/karst. Excess calculates to 16% - Additional cement might be required.**

Formation below the 9-5/8" shoe to be tested according to Onshore Order 2.III.B.1.i. Test to be done as a mud equivalency test using the mud weight necessary for the pore pressure of the formation below the shoe (not the mud weight required to prevent dissolving the salt formation) and the mud weight for the bottom of the hole. Report results to BLM office.

3. The minimum required fill of cement behind the 7 inch production casing is:
☒ Cement should tie-back at least 200 feet into previous casing string. Operator shall provide method of verification. **Excess calculates to 24% - Additional cement might be required.**
4. The minimum required fill of cement behind the 4 1/2 inch production liner is:
☒ Cement as proposed. Operator shall provide method of verification.
5. If hardband drill pipe is rotated inside casing, returns will be monitored for metal. If metal is found in samples, drill pipe will be pulled and rubber protectors which have a larger diameter than the tool joints of the drill pipe will be installed prior to continuing drilling operations.

C. PRESSURE CONTROL

1. All blowout preventer (BOP) and related equipment (BOPE) shall comply with well control requirements as described in Onshore Oil and Gas Order No. 2 and API 53.
2. Variance approved to use flex line from BOP to choke manifold. Check condition of flexible line from BOP to choke manifold, replace if exterior is damaged or if line fails test. Line to be as straight as possible with no hard bends and is to be anchored according to Manufacturer's requirements. The flexible hose can be exchanged with a hose of equal size and equal or greater pressure rating. **Anchor requirements, specification sheet and hydrostatic pressure test certification matching the hose in service, to be onsite for review. These documents shall be posted in the company man's trailer and on the rig floor.** If the BLM inspector questions the straightness of the hose, a BLM engineer will be contacted and will review in the field or via picture supplied by inspector to determine if changes are required (operator shall expect delays if this occurs).
3. Minimum working pressure of the blowout preventer (BOP) and related equipment (BOPE) required for drilling below the 13 3/8 inch surface casing shoe shall be **2000 (2M) psi.**

4. Minimum working pressure of the blowout preventer (BOP) and related equipment (BOPE) required for drilling below the 9 5/8 inch intermediate casing shoe shall be 5000 (5M) psi.

5M/10M system requires an HCR valve, remote kill line and annular to match. The remote kill line is to be installed prior to testing the system and tested to stack pressure.

5. The appropriate BLM office shall be notified a minimum of 4 hours in advance for a representative to witness the tests.
 - a. In a water basin, for all casing strings utilizing slips, these are to be set as soon as the crew and rig are ready and any fallback cement remediation has been done. The casing cut-off and BOP installation can be initiated four hours after installing the slips, which will be approximately six hours after bumping the plug. For those casing strings not using slips, the minimum wait time before cut-off is eight hours after bumping the plug. BOP/BOPE testing can begin after cut-off or once cement reaches 500 psi compressive strength (including lead when specified), whichever is greater. However, if the float does not hold, cut-off cannot be initiated until cement reaches 500 psi compressive strength (including lead when specified).
 - b. The tests shall be done by an independent service company utilizing a test plug **not a cup or J-packer**. The operator also has the option of utilizing an independent tester to test without a plug (i.e. against the casing) pursuant to Onshore Order 2 with the pressure not to exceed 70% of the burst rating for the casing. Any test against the casing must meet the WOC time for water basin (8 hours) or potash (24 hours) or 500 pounds compressive strength, whichever is greater, prior to initiating the test (see casing segment as lead cement may be critical item).
 - c. The test shall be run on a 5000 psi chart for a 2-3M BOP/BOP, on a 10000 psi chart for a 5M BOP/BOPE and on a 15000 psi chart for a 10M BOP/BOPE. If a linear chart is used, it shall be a one hour chart. A circular chart shall have a maximum 2 hour clock. If a twelve hour or twenty-four hour chart is used, tester shall make a notation that it is run with a two hour clock.
 - d. The results of the test shall be reported to the appropriate BLM office.
 - e. All tests are required to be recorded on a calibrated test chart. **A copy of the BOP/BOPE test chart and a copy of independent service company test will be submitted to the appropriate BLM office.**
 - f. The BOP/BOPE test shall include a low pressure test from 250 to 300 psi. The test will be held for a minimum of 10 minutes if test is done with a test plug and 30 minutes without a test plug. This test shall be performed prior to the test at full stack pressure.

D. DRILL STEM TEST

If drill stem tests are performed, Onshore Order 2.III.D shall be followed.

E. WASTE MATERIAL AND FLUIDS

All waste (i.e. drilling fluids, trash, salts, chemicals, sewage, gray water, etc.) created as a result of drilling operations and completion operations shall be safely contained and disposed of properly at a waste disposal facility. No waste material or fluid shall be disposed of on the well location or surrounding area.

Porto-johns and trash containers will be on-location during fracturing operations or any other crew-intensive operations.

MHH 10182016

VIII. PRODUCTION (POST DRILLING)

A. WELL STRUCTURES & FACILITIES

Placement of Production Facilities

Production facilities should be placed on the well pad to allow for maximum interim recontouring and revegetation of the well location.

Exclosure Netting (Open-top Tanks)

Immediately following active drilling or completion operations, the operator will take actions necessary to prevent wildlife and livestock access, including avian wildlife, to all open-topped tanks that contain or have the potential to contain salinity sufficient to cause harm to wildlife or livestock, hydrocarbons, or Resource Conservation and Recovery Act of 1976-exempt hazardous substances. At a minimum, the operator will net, screen, or cover open-topped tanks to exclude wildlife and livestock and prevent mortality. If the operator uses netting, the operator will cover and secure the open portion of the tank to prevent wildlife entry. The operator will net, screen, or cover the tanks until the operator removes the tanks from the location or the tanks no longer contain substances that could be harmful to wildlife or livestock. Use a maximum netting mesh size of 1 ½ inches. The netting must not be in contact with fluids and must not have holes or gaps.

Chemical and Fuel Secondary Containment and Exclosure Screening

The operator will prevent all hazardous, poisonous, flammable, and toxic substances from coming into contact with soil and water. At a minimum, the operator will install and maintain an impervious secondary containment system for any tank or barrel containing hazardous, poisonous, flammable, or toxic substances sufficient to contain the contents of the tank or barrel and any drips, leaks, and anticipated precipitation. The operator will dispose of fluids within the containment system that do not meet applicable state or U. S. Environmental Protection Agency livestock water standards in accordance with state law; the operator must not drain the fluids to the soil or ground. The operator will design, construct, and maintain all secondary containment systems to prevent wildlife and livestock exposure to harmful substances. At a minimum, the operator will install effective wildlife and livestock exclosure systems such as fencing, netting, expanded metal mesh, lids, and grate covers. Use a maximum netting mesh size of 1 ½ inches.

Open-Vent Exhaust Stack Exclosures

The operator will construct, modify, equip, and maintain all open-vent exhaust stacks on production equipment to prevent birds and bats from entering, and to discourage perching, roosting, and nesting. (*Recommended enclosure structures on open-vent exhaust stacks are in the shape of a cone.*) Production equipment includes, but may not be limited to, tanks, heater-treaters, separators, dehydrators, flare stacks, in-line units, and compressor mufflers.

Containment Structures

Proposed production facilities such as storage tanks and other vessels will have a secondary containment structure that is constructed to hold the capacity of 1.5 times the largest tank, plus freeboard to account for precipitation, unless more stringent protective requirements are deemed necessary.

Painting Requirement

All above-ground structures including meter housing that are not subject to safety requirements shall be painted a flat non-reflective paint color, **Shale Green** from the BLM Standard Environmental Color Chart (CC-001: June 2008).

IX. INTERIM RECLAMATION

During the life of the development, all disturbed areas not needed for active support of production operations should undergo interim reclamation in order to minimize the environmental impacts of development on other resources and uses.

Within six (6) months of well completion, operators should work with BLM surface management specialists (Jim Amos: 575-234-5909) to devise the best strategies to reduce the size of the location. Interim reclamation should allow for remedial well operations, as well as safe and efficient removal of oil and gas.

During reclamation, the removal of caliche is important to increasing the success of revegetating the site. Removed caliche that is free of contaminants may be used for road repairs, fire walls or for building other roads and locations. In order to operate the well or complete workover operations, it may be necessary to drive, park and operate on restored interim vegetation within the previously disturbed area. Disturbing revegetated areas for production or workover operations will be allowed. If there is significant disturbance and loss of vegetation, the area will need to be revegetated. Communicate with the appropriate BLM office for any exceptions/exemptions if needed.

All disturbed areas after they have been satisfactorily prepared need to be reseeded with the seed mixture provided below.

Upon completion of interim reclamation, the operator shall submit a Sundry Notices and Reports on Wells, Subsequent Report of Reclamation (Form 3160-5).

X. FINAL ABANDONMENT & RECLAMATION

At final abandonment, well locations, production facilities, and access roads must undergo "final" reclamation so that the character and productivity of the land are restored.

Earthwork for final reclamation must be completed within six (6) months of well plugging. All pads, pits, facility locations and roads must be reclaimed to a satisfactory revegetated, safe, and stable condition, unless an agreement is made with the landowner or BLM to keep the road and/or pad intact.

After all disturbed areas have been satisfactorily prepared, these areas need to be revegetated with the seed mixture provided below. Seeding should be accomplished by drilling on the contour whenever practical or by other approved methods. Seeding may need to be repeated until revegetation is successful, as determined by the BLM.

Operators shall contact a BLM surface protection specialist prior to surface abandonment operations for site specific objectives (Jim Amos: 575-234-5909).

Seed Mixture 1 for Loamy Sites

Holder shall seed all disturbed areas with the seed mixture listed below. The seed mixture shall be planted in the amounts specified in pounds of pure live seed (PLS)* per acre. There shall be no primary or secondary noxious weeds in the seed mixture. Seed shall be tested and the viability testing of seed will be done in accordance with State law(s) and within nine (9) months prior to purchase. Commercial seed shall be either certified or registered seed. The seed container shall be tagged in accordance with State law(s) and available for inspection by the Authorized Officer.

Seed shall be planted using a drill equipped with a depth regulator to ensure proper depth regulator to ensure proper depth of planting where drilling is possible. The seed mixture shall be evenly and uniformly planted over the disturbed area (small/heavier seeds have a tendency to drop the bottom of the drill and are planted first). Holder shall take appropriate measures to ensure this does not occur. Where drilling is not possible, seed shall be broadcast and the area shall be raked or chained to cover the seed. When broadcasting the seed, the pounds per acre shall be doubled. The seeding shall be repeated until a satisfactory stand is established as determined by the Authorized Officer. Evaluation of growth may not be made before completion of at least one full growing season after seeding.

Species to be planted in pounds of pure live seed* per acre:

<u>Species</u>	<u>lb/acre</u>
Plains lovegrass (<i>Eragrostis intermedia</i>)	0.5
Sand dropseed (<i>Sporobolus cryptandrus</i>)	1.0
Sideoats grama (<i>Bouteloua curtipendula</i>)	5.0
Plains bristlegass (<i>Setaria macrostachya</i>)	2.0

*Pounds of pure live seed:

Pounds of seed x percent purity x percent germination = pounds pure live seed

NMOCD CONDITION OF APPROVAL

The *New* Gas Capture Plan (GCP) notice is posted on the NMOCD website under Announcements. The Plan became effective May 1, 2016. A copy of the GCP form is included with the NOTICE and is also in our FORMS section under Unnumbered Forms. Please review filing dates for all applicable activities currently approved or pending and submit accordingly. Failure to file a GCP may jeopardize the operator's ability to obtain C-129 approval to flare gas after the initial 60-day completion period.

1. Operator shall notify appropriate NMOCD District office when setting conductor pipe.
2. If an APD expires and if site construction has occurred, site remediation is required.
3. The Operator is to notify NMOCD by sundry within ten (10) days of spudding a well.
4. It is the operator's responsibility to monitor cancellation dates of approved APDs.