

District I  
1625 N. French Dr., Hobbs, NM 88240  
Phone: (575) 393-6161 Fax: (575) 393-0720  
District II  
811 S. First St., Artesia, NM 88210  
Phone: (575) 748-1283 Fax: (575) 748-9720  
District III  
1000 Rio Brazos Road, Aztec, NM 87410  
Phone: (505) 334-6178 Fax: (505) 334-6170  
District IV  
1220 S. St. Francis Dr., Santa Fe, NM 87505  
Phone: (505) 476-3460 Fax: (505) 476-3462

State of New Mexico  
Energy, Minerals & Natural Resources Department  
OIL CONSERVATION DIVISION  
1220 South St. Francis Dr.  
Santa Fe, NM 87505

Form C-102  
Revised August 1, 2011  
Submit one copy to appropriate  
District Office

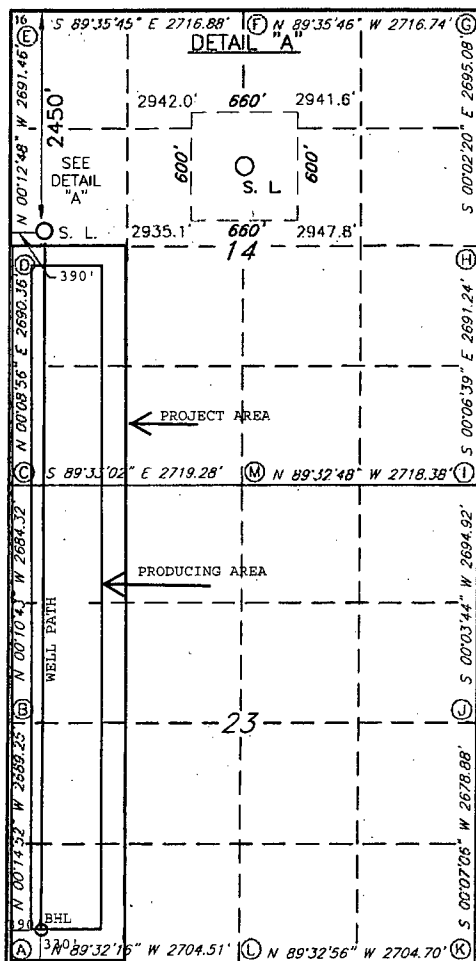
NOV 10 2016

☒ AMENDED REPORT  
11-2-16

WELL LOCATION AND ACREAGE DEDICATION

1 API Number 30-015-43859		2 Pool Code 72897		3 Pool Name BRUSHY DRAW WOLFCAMP					
4 Property Code 317090		5 Property Name FULLER 14/23 WILM FED COM						6 Well Number 2H	
7 OGRID NO. 14744		8 Operator Name MEWBOURNE OIL COMPANY						9 Elevation 2936'	
10 Surface Location									
UL or lot no. E	Section 14	Township 26S	Range 29E	Lot Idn	Feet from the 2450	North/South line NORTH	Feet from the 390	East/West line WEST	County EDDY
11 Bottom Hole Location If Different From Surface									
UL or lot no. M	Section 23	Township 26S	Range 29E	Lot Idn	Feet from the 330	North/South line SOUTH	Feet from the 390	East/West line WEST	County EDDY
12 Dedicated Acres 240		13 Joint or Infill		14 Consolidation Code		15 Order No.			

No allowable will be assigned to this completion until all interest have been consolidated or a non-standard unit has been approved by the division.



GEODETIC DATA  
NAD 27 GRID - NM EAST  
SURFACE LOCATION  
N 379410.8 - E 615270.4  
LAT: 32.04256934 N  
LONG: 103.9611624 W  
BOTTOM LOCATION  
N 371437.4 - E 615223.0

CORNER DATA  
NAD 27 GRID - NM EAST  
A: FOUND BRASS CAP "1940"  
N 371110.0 - E 614894.4  
B: FOUND BRASS CAP "1940"  
N 373798.7 - E 614882.7  
C: FOUND BRASS CAP "1940"  
N 376482.4 - E 614874.4  
D: FOUND BRASS CAP "1940"  
N 379172.2 - E 614881.4

E: FOUND BRASS CAP "1940"  
N 381863.1 - E 614871.4  
F: FOUND BRASS CAP "1940"  
N 381843.9 - E 617587.6  
G: FOUND BRASS CAP "1940"  
N 381824.7 - E 620303.7  
H: FOUND BRASS CAP "1940"  
N 379130.2 - E 620305.5  
I: FOUND BRASS CAP "1940"  
N 376439.6 - E 620310.7  
J: FOUND BRASS CAP "1940"  
N 373745.2 - E 620307.8  
K: FOUND BRASS CAP "1940"  
N 371066.9 - E 620302.3  
L: FOUND BRASS CAP "1940"  
N 371088.2 - E 617598.2  
M: FOUND BRASS CAP "1940"  
N 376461.1 - E 617593.0

17 OPERATOR CERTIFICATION

I hereby certify that the information contained herein is true and complete to the best of my knowledge and belief, and that this organization either owns a working interest or unleased mineral interest in the land including the proposed bottom hole location or has a right to drill this well at this location pursuant to a contract with an owner of such a mineral or working interest, or to a voluntary pooling agreement or a compulsory pooling order heretofore entered by the division

Signature: *Bradley Bishop* Date: 11-02-16  
Printed Name: BRADLEY BISHOP

E-mail Address

18 SURVEYOR CERTIFICATION

I hereby certify that the well location shown on this plat was plotted from field notes of actual surveys made by me or under my supervision, and that the same is true and correct to the best of my belief.

4-9-15

Date of Survey

Signature and Seal of Professional Surveyor

19680

Certificate Number

