

District I
1625 N. French Dr., Hobbs, NM 88240
Phone: (575) 393-6161 Fax: (575) 393-0720
District II
811 S. First St., Artesia, NM 88210
Phone: (575) 748-1283 Fax: (575) 748-9720
District III
1000 Rio Brazos Road, Aztec, NM 87410
Phone: (505) 334-6178 Fax: (505) 334-6170
District IV
1220 S. St. Francis Dr., Santa Fe, NM 87505
Phone: (505) 476-3460 Fax: (505) 476-3462

State of New Mexico
Energy, Minerals & Natural Resources
Department
OIL CONSERVATION DIVISION
1220 South St. Francis Dr.
Santa Fe, NM 87505

FORM C-102
Revised August 1, 2011
Submit one copy to appropriate
District Office

NOV 14 2016

AMENDED REPORT

WELL LOCATION AND ACREAGE DEDICATION PLAT

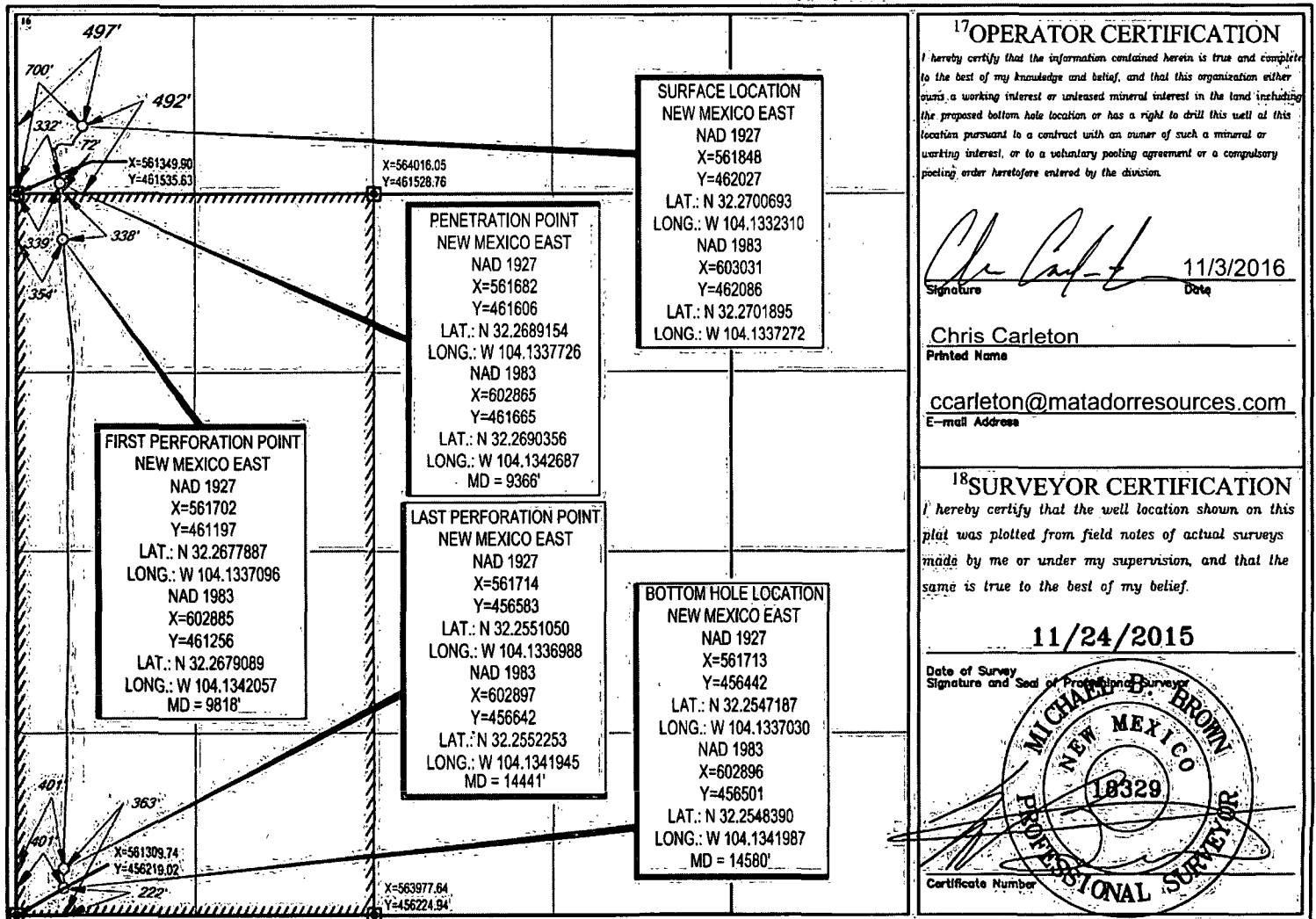
¹ API Number 30-015-43695	² Pool Code 97442	³ Pool Name BLACK RIVER;WOLFCAMP, EAST (G)
⁴ Property Code 316071	⁵ Property Name CHARLIE SWEENEY 31-23S-28E RB	⁶ Well Number #201H
⁷ OGRID No. 228937	⁸ Operator Name MATADOR PRODUCTION COMPANY	⁹ Elevation 3117'

¹⁰ Surface Location									
UL or lot no.	Section	Township	Range	Lot Idn	Feet from the	North/South line	Feet from the	East/West line	County
4	30	23-S	28-E	-	492'	SOUTH	497'	WEST	EDDY

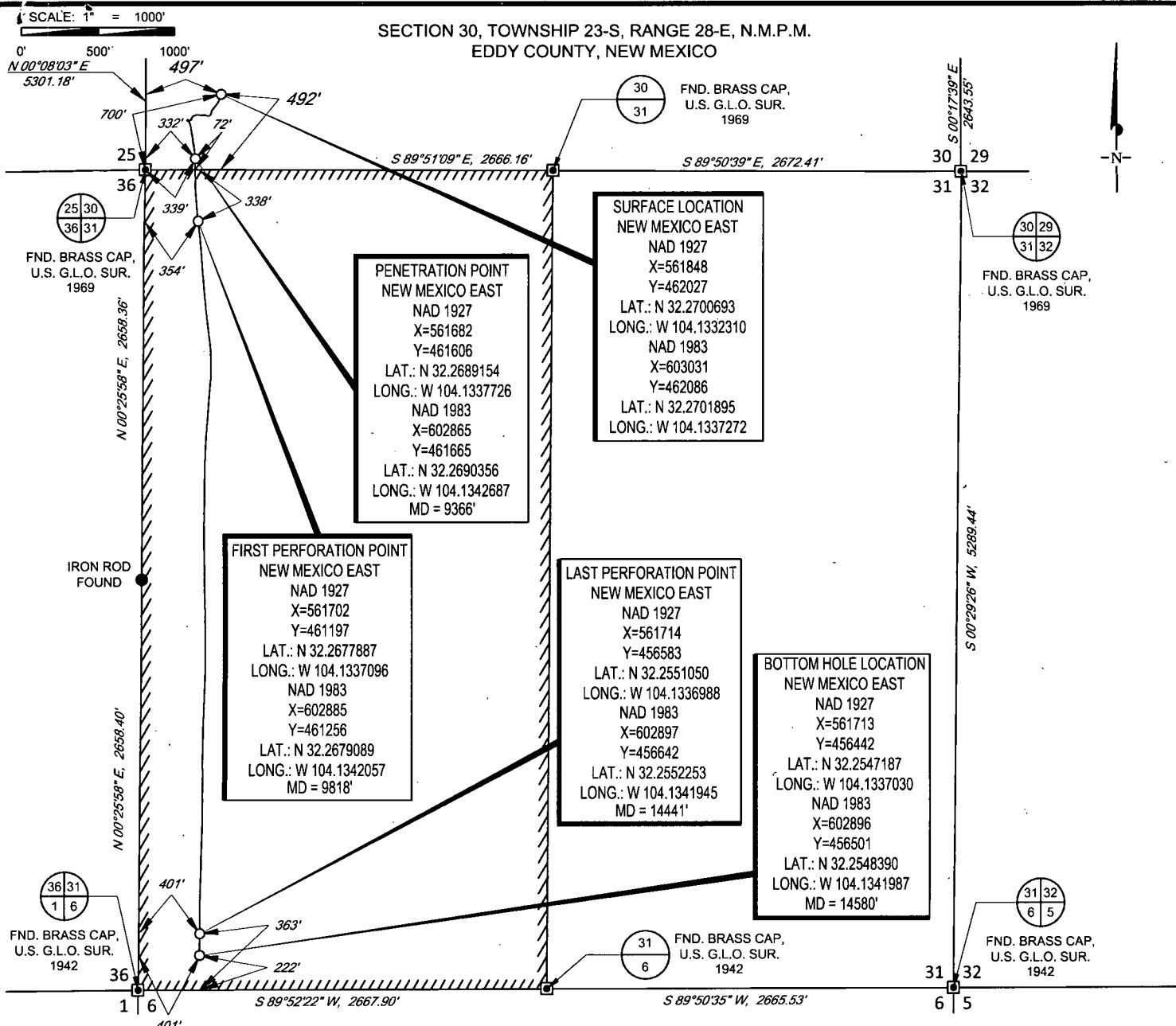
UL or lot no.	Section	Township	Range	Lot Idn	Feet from the	North/South line	Feet from the	East/West line	County
4	31	23-S	28-E	-	222'	SOUTH	401'	WEST	EDDY

¹² Dedicated Acres 320	¹³ Joint or Infill	¹⁴ Consolidation Code	¹⁵ Order No.
--------------------------------------	-------------------------------	----------------------------------	-------------------------

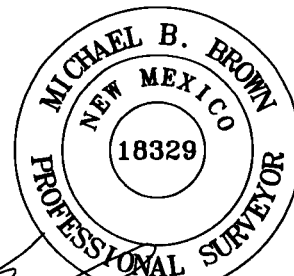
No allowable will be assigned to this completion until all interests have been consolidated or a non-standard unit has been approved by the division.



SECTION 30, TOWNSHIP 23-S, RANGE 28-E, N.M.P.M.
EDDY COUNTY, NEW MEXICO



LEASE NAME & WELL NO.: CHARLIE SWEENEY 31-23S-28E RB #201H
SECTION 30 TWP 23-S RGE 28-E SURVEY N.M.P.M.
COUNTY EDDY STATE NM ELEVATION 3117'
DESCRIPTION 492' FSL & 497' FWL



Michael Blake Brown, P.S. No. 18329
NOVEMBER 1, 2016



TOPOGRAPHIC
LOYALTY INNOVATION LEGACY
1400 EVERMAN PARKWAY, Ste. 197 • FT. WORTH, TEXAS 76140
TELEPHONE: (817) 744-7512 • FAX (817) 744-7548
2903 NORTH BIG SPRING • MIDLAND, TEXAS 79705
TELEPHONE: (432) 682-1653 OR (800) 767-1653 • FAX (432) 682-1743
WWW.TOPOGRAPHIC.COM

CHARLIE SWEENEY 31-23S-28E RB #201H AS-DRILLED	REVISION:
DATE: 11/01/16	
FILE: AD_CHARLIE_SWEENEY_31-23S-28E_RB_201H	
DRAWN BY: GJU	
SHEET: 1 OF 1	

- NOTES:
1. ORIGINAL DOCUMENT SIZE: 8.5" X 11"
 2. ALL BEARINGS, DISTANCES, AND COORDINATE VALUES CONTAINED HEREIN ARE GRID BASED UPON THE NEW MEXICO STATE PLANE COORDINATE SYSTEM, EAST ZONE, U.S. SURVEY FEET, NORTH AMERICAN DATUM 1927.
 3. THIS WELL LOCATION SHOWN HEREON HAS BEEN SURVEYED ON THE GROUND UNDER MY SUPERVISION AND PREPARED ACCORDING TO THE EVIDENCE FOUND AT THE TIME OF SURVEY, AND DATA PROVIDED BY MATADOR PRODUCTION COMPANY. THIS CERTIFICATION IS MADE AND LIMITED TO THOSE PERSONS OR ENTITIES SHOWN ON THE FACE OF THIS PLAT AND IS NON-TRANSFERABLE. THIS SURVEY IS CERTIFIED FOR THIS TRANSACTION ONLY.