

UNITED STATES
DEPARTMENT OF THE INTERIOR
BUREAU OF LAND MANAGEMENT

OCD Artesia

FORM APPROVED
OMB NO. 1004-0135
Expires: July 31, 2010**SUNDRY NOTICES AND REPORTS ON WELLS**
Do not use this form for proposals to drill or to re-enter an abandoned well. Use form 3160-3 (APD) for such proposals.5. Lease Serial No.
NMNM67106

6. If Indian, Allottee or Tribe Name

SUBMIT IN TRIPLICATE - Other instructions on reverse side.7. If Unit or CA/Agreement, Name and/or No.
NMNM1340948. Well Name and No.
HOOFPRINT FEDERAL COM 1H9. API Well No.
30-015-41620-00-S110. Field and Pool, or Exploratory
MESA VERDE
UNKNOWN11. County or Parish, and State
EDDY COUNTY, NM

1. Type of Well

☒ Oil Well ☐ Gas Well ☐ Other2. Name of Operator
COG OPERATING LLCContact: AMANDA AVERY
E-Mail: aavery@concho.com3a. Address
600 W ILLINOIS AVENUE
MIDLAND, TX 797013b. Phone No. (include area code)
Ph: 575-748-6940

4. Location of Well (Footage, Sec., T., R., M., or Survey Description)

Sec 12 T24S R31E SWSW 330FSL 430FWL
32.225422 N Lat, 103.738193 W Lon**12. CHECK APPROPRIATE BOX(ES) TO INDICATE NATURE OF NOTICE, REPORT, OR OTHER DATA**

TYPE OF SUBMISSION	TYPE OF ACTION			
<input type="checkbox"/> Notice of Intent	<input type="checkbox"/> Acidize	<input type="checkbox"/> Deepen	<input type="checkbox"/> Production (Start/Resume)	<input type="checkbox"/> Water Shut-Off
<input checked="" type="checkbox"/> Subsequent Report	<input type="checkbox"/> Alter Casing	<input type="checkbox"/> Fracture Treat	<input type="checkbox"/> Reclamation	<input type="checkbox"/> Well Integrity
<input type="checkbox"/> Final Abandonment Notice	<input type="checkbox"/> Casing Repair	<input type="checkbox"/> New Construction	<input type="checkbox"/> Recomplete	<input checked="" type="checkbox"/> Other
	<input type="checkbox"/> Change Plans	<input type="checkbox"/> Plug and Abandon	<input type="checkbox"/> Temporarily Abandon	Site Facility Diagram/Security Plan
	<input type="checkbox"/> Convert to Injection	<input type="checkbox"/> Plug Back	<input type="checkbox"/> Water Disposal	

13. Describe Proposed or Completed Operation (clearly state all pertinent details, including estimated starting date of any proposed work and approximate duration thereof. If the proposal is to deepen directionally or recompleat horizontally, give subsurface locations and measured and true vertical depths of all pertinent markers and zones. Attach the Bond under which the work will be performed or provide the Bond No. on file with BLM/BIA. Required subsequent reports shall be filed within 30 days following completion of the involved operations. If the operation results in a multiple completion or recompleat in a new interval, a Form 3160-4 shall be filed once testing has been completed. Final Abandonment Notices shall be filed only after all requirements, including reclamation, have been completed, and the operator has determined that the site is ready for final inspection.)

Please see attached Site Facility Diagram.

NM OIL CONSERVATION
ARTESIA DISTRICT

NOV 14 2016

RECEIVED

Accepted for Record Purposes.
Approval Subject to Onsite Inspection.
Date: 09-28-16

14. I hereby certify that the foregoing is true and correct.	
Electronic Submission #345143 verified by the BLM Well Information System For COG OPERATING LLC, sent to the Carlsbad Committed to AFMSS for processing by PRISCILLA PEREZ on 07/20/2016 (16PP1750SE)	
Name (Printed/Typed) AMANDA AVERY	Title AUTHORIZED REPRESENTATIVE
Signature (Electronic Submission)	Date 07/20/2016

THIS SPACE FOR FEDERAL OR STATE OFFICE USE

Approved By _____	Title _____	Date _____
Conditions of approval, if any, are attached. Approval of this notice does not warrant or certify that the applicant holds legal or equitable title to those rights in the subject lease which would entitle the applicant to conduct operations thereon.		Office _____

Title 18 U.S.C. Section 1001 and Title 43 U.S.C. Section 1212, make it a crime for any person knowingly and willfully to make to any department or agency of the United States any false, fictitious or fraudulent statements or representations as to any matter within its jurisdiction.

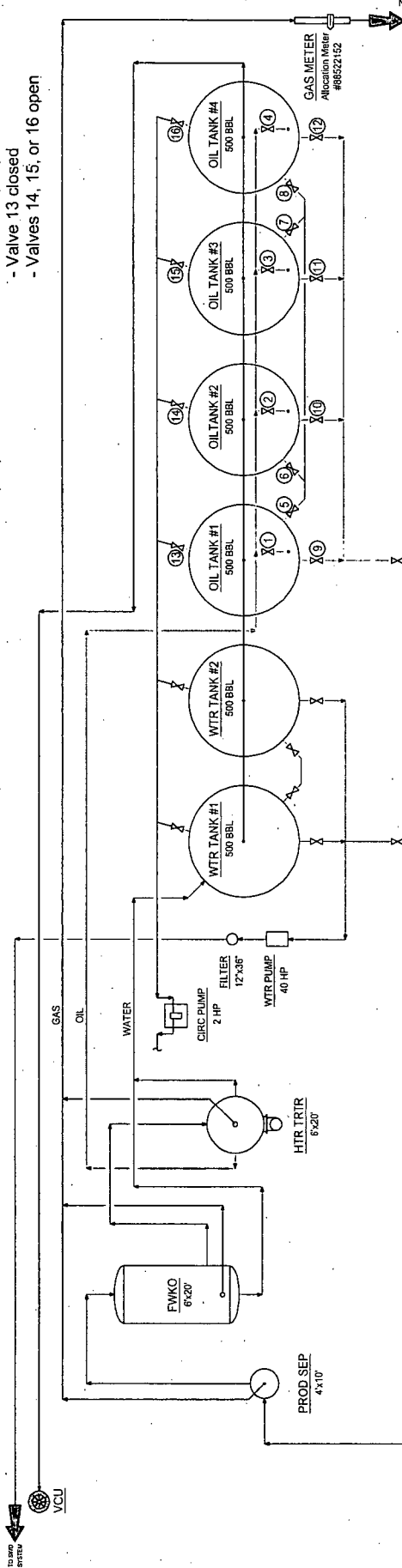
**** BLM REVISED ** BLM REVISED ** BLM REVISED ** BLM REVISED ** BLM REVISED ****

HOOFPRINT FEDERAL COM 1H BATTERY
 SWSW SECTION 12, T24S, R31E, UNIT M
 EDDY COUNTY, NM

WELLS:
 HOOFPRINT FEDERAL COM #001H: 30-015-41620

Production Phase - Oil Tank #1
 - Valve 1 open
 - Valves 2, 3, and 4 closed
 - Valves 5, 6, 7, and 8 open
 - Valves 9, 10, 11, and 12 closed
 - Valve 13 open
 - Valves 14, 15, and 16 closed

Sales Phase - Oil Tank #1
 - Valve 1 closed
 - Valves 2, 3, or 4 open
 - Valve 5 closed
 - Valves 6, 7, and 8 open
 - Valve 9 open
 - Valves 10, 11, and 12 closed
 - Valve 13 closed
 - Valves 14, 15, or 16 open



COG Operating LLC
 Site Security Plans Located At:
 One Concho Center
 600 W. Illinois Ave.
 Midland, TX 79701

TO DCP GAS SALES LINE
 METER #27860-00 LOCATED:
 SWSW SEC 12, T24S, R31E, UNIT N
 #88522152



Ledger for Site Diagram
 Produced Fluid: _____
 Produced Oil: _____
 Produced Gas: _____
 Produced Water: _____

CONFIDENTIALITY NOTICE		REVISIONS		ENGINEERING RECORD	
NO.	DATE	BY	CHK.	BY	DATE
1	06/07/11	CH	CH	CH	06/07/11
2	06/07/11	CH	CH	CH	06/07/11
3	06/07/11	CH	CH	CH	06/07/11
4	06/07/11	CH	CH	CH	06/07/11
5	06/07/11	CH	CH	CH	06/07/11
6	06/07/11	CH	CH	CH	06/07/11
7	06/07/11	CH	CH	CH	06/07/11
8	06/07/11	CH	CH	CH	06/07/11
9	06/07/11	CH	CH	CH	06/07/11
10	06/07/11	CH	CH	CH	06/07/11
11	06/07/11	CH	CH	CH	06/07/11
12	06/07/11	CH	CH	CH	06/07/11
13	06/07/11	CH	CH	CH	06/07/11
14	06/07/11	CH	CH	CH	06/07/11
15	06/07/11	CH	CH	CH	06/07/11
16	06/07/11	CH	CH	CH	06/07/11
17	06/07/11	CH	CH	CH	06/07/11
18	06/07/11	CH	CH	CH	06/07/11
19	06/07/11	CH	CH	CH	06/07/11
20	06/07/11	CH	CH	CH	06/07/11
21	06/07/11	CH	CH	CH	06/07/11
22	06/07/11	CH	CH	CH	06/07/11
23	06/07/11	CH	CH	CH	06/07/11
24	06/07/11	CH	CH	CH	06/07/11
25	06/07/11	CH	CH	CH	06/07/11
26	06/07/11	CH	CH	CH	06/07/11
27	06/07/11	CH	CH	CH	06/07/11
28	06/07/11	CH	CH	CH	06/07/11
29	06/07/11	CH	CH	CH	06/07/11
30	06/07/11	CH	CH	CH	06/07/11
31	06/07/11	CH	CH	CH	06/07/11
32	06/07/11	CH	CH	CH	06/07/11
33	06/07/11	CH	CH	CH	06/07/11
34	06/07/11	CH	CH	CH	06/07/11
35	06/07/11	CH	CH	CH	06/07/11
36	06/07/11	CH	CH	CH	06/07/11
37	06/07/11	CH	CH	CH	06/07/11
38	06/07/11	CH	CH	CH	06/07/11
39	06/07/11	CH	CH	CH	06/07/11
40	06/07/11	CH	CH	CH	06/07/11
41	06/07/11	CH	CH	CH	06/07/11
42	06/07/11	CH	CH	CH	06/07/11
43	06/07/11	CH	CH	CH	06/07/11
44	06/07/11	CH	CH	CH	06/07/11
45	06/07/11	CH	CH	CH	06/07/11
46	06/07/11	CH	CH	CH	06/07/11
47	06/07/11	CH	CH	CH	06/07/11
48	06/07/11	CH	CH	CH	06/07/11
49	06/07/11	CH	CH	CH	06/07/11
50	06/07/11	CH	CH	CH	06/07/11
51	06/07/11	CH	CH	CH	06/07/11
52	06/07/11	CH	CH	CH	06/07/11
53	06/07/11	CH	CH	CH	06/07/11
54	06/07/11	CH	CH	CH	06/07/11
55	06/07/11	CH	CH	CH	06/07/11
56	06/07/11	CH	CH	CH	06/07/11
57	06/07/11	CH	CH	CH	06/07/11
58	06/07/11	CH	CH	CH	06/07/11
59	06/07/11	CH	CH	CH	06/07/11
60	06/07/11	CH	CH	CH	06/07/11
61	06/07/11	CH	CH	CH	06/07/11
62	06/07/11	CH	CH	CH	06/07/11
63	06/07/11	CH	CH	CH	06/07/11
64	06/07/11	CH	CH	CH	06/07/11
65	06/07/11	CH	CH	CH	06/07/11
66	06/07/11	CH	CH	CH	06/07/11
67	06/07/11	CH	CH	CH	06/07/11
68	06/07/11	CH	CH	CH	06/07/11
69	06/07/11	CH	CH	CH	06/07/11
70	06/07/11	CH	CH	CH	06/07/11
71	06/07/11	CH	CH	CH	06/07/11
72	06/07/11	CH	CH	CH	06/07/11
73	06/07/11	CH	CH	CH	06/07/11
74	06/07/11	CH	CH	CH	06/07/11
75	06/07/11	CH	CH	CH	06/07/11
76	06/07/11	CH	CH	CH	06/07/11
77	06/07/11	CH	CH	CH	06/07/11
78	06/07/11	CH	CH	CH	06/07/11
79	06/07/11	CH	CH	CH	06/07/11
80	06/07/11	CH	CH	CH	06/07/11
81	06/07/11	CH	CH	CH	06/07/11
82	06/07/11	CH	CH	CH	06/07/11
83	06/07/11	CH	CH	CH	06/07/11
84	06/07/11	CH	CH	CH	06/07/11
85	06/07/11	CH	CH	CH	06/07/11
86	06/07/11	CH	CH	CH	06/07/11
87	06/07/11	CH	CH	CH	06/07/11
88	06/07/11	CH	CH	CH	06/07/11
89	06/07/11	CH	CH	CH	06/07/11
90	06/07/11	CH	CH	CH	06/07/11
91	06/07/11	CH	CH	CH	06/07/11
92	06/07/11	CH	CH	CH	06/07/11
93	06/07/11	CH	CH	CH	06/07/11
94	06/07/11	CH	CH	CH	06/07/11
95	06/07/11	CH	CH	CH	06/07/11
96	06/07/11	CH	CH	CH	06/07/11
97	06/07/11	CH	CH	CH	06/07/11
98	06/07/11	CH	CH	CH	06/07/11
99	06/07/11	CH	CH	CH	06/07/11
100	06/07/11	CH	CH	CH	06/07/11

Accepted for Record Purposes.
 Approval Subject to Onsite Inspection.
 Date: 09.28.16