

District I
1625 N. French Dr., Hobbs, NM 88240
Phone: (575) 393-6161 Fax: (575) 393-0720
District II
811 S. First St., Artesia, NM 88210
Phone: (575) 748-1283 Fax: (575) 748-9720
District III
1000 Rio Brazos Road, Aztec, NM 87410
Phone: (505) 334-6178 Fax: (505) 334-6170
District IV
1220 S. St. Francis Dr., Santa Fe, NM 87505
Phone: (505) 476-3460 Fax: (505) 476-3462

State of New Mexico
Energy, Minerals & Natural Resources Department
OIL CONSERVATION DIVISION
1220 South St. Francis Dr.
Santa Fe, NM 87505

Form C-102
Revised August 1, 2011
Submit one copy to appropriate
District Office

☐ AMENDED REPORT

WELL LOCATION AND ACREAGE DEDICATION PLAT

¹ API Number 30-015-43959	² Pool Code 97442	³ Pool Name BLACK RIVER, WOLFCAMP (GAS)
⁴ Property Code 317097	⁵ Property Name BLACK RIVER 15-10 STATE COM X	
⁷ OGRID No. 160825	⁸ Operator Name B.C. OPERATING, INC.	⁶ Well Number 4H ⁹ Elevation 3230'

¹⁰ Surface Location

UL or lot no.	Section	Township	Range	Lot Idn	Feet from the	North/South line	Feet from the	East/West line	County
P	15	T24S	R27E		170'	SOUTH	360'	EAST	EDDY

¹¹ Bottom Hole Location If Different From Surface

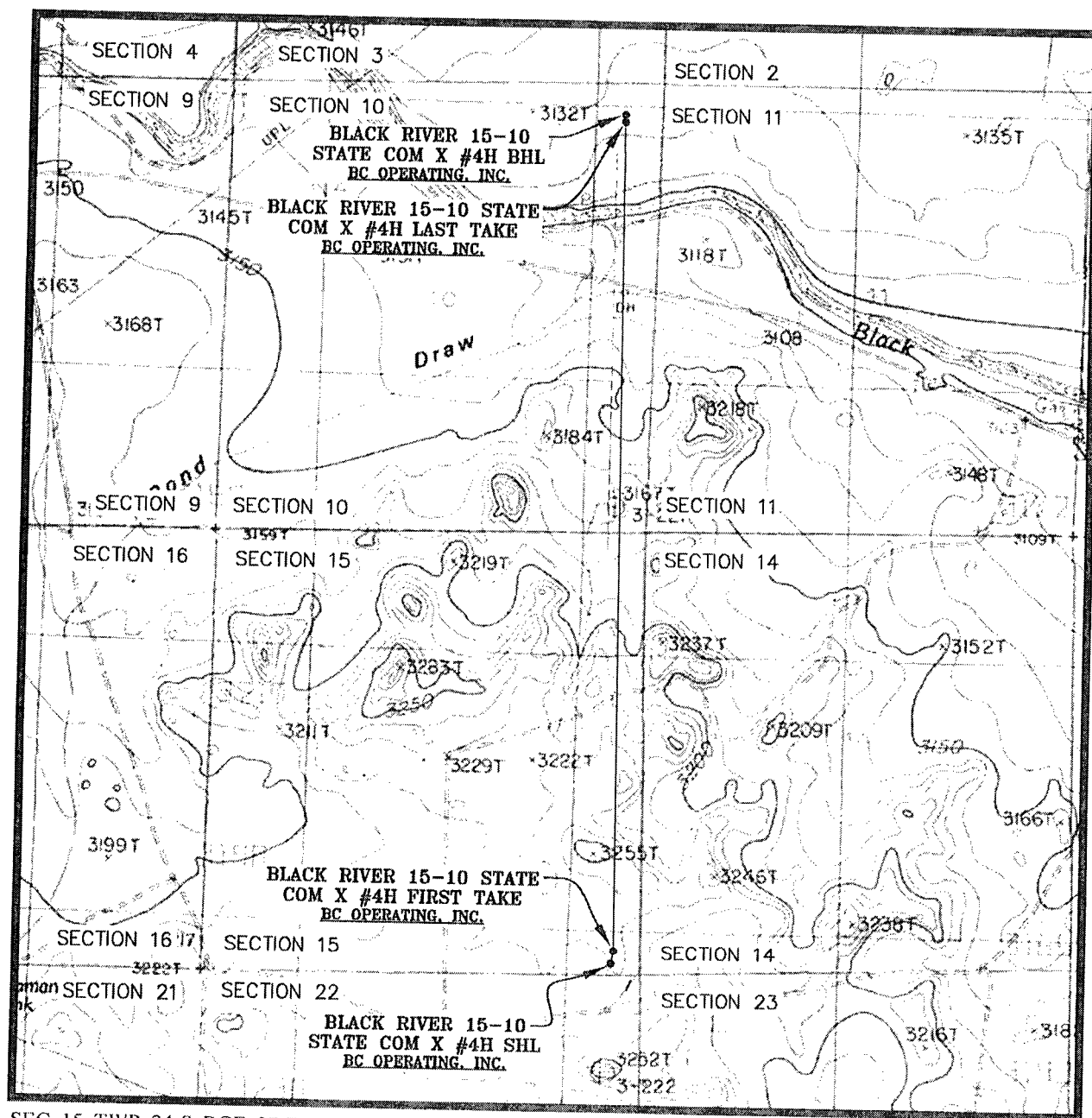
UL or lot no.	Section	Township	Range	Lot Idn	Feet from the	North/South line	Feet from the	East/West line	County
A	10	T24S	R27E		240'	NORTH	330'	EAST	EDDY

¹² Dedicated Acres	¹³ Joint or Infill	¹⁴ Consolidation Code	¹⁵ Order No.
640.00			

No allowable will be assigned to this completion until all interests have been consolidated or a non-standard unit has been approved by the division.

¹⁶ SECTION 4 SECTION 9 BOTTOM HOLE LOCATION 240' FNL 330' FEL NAD 83, SPCS NM EAST X:591495.00' / Y:450455.60' LAT:32.23827424N / LON:104.17110787W NAD 27, SPCS NM EAST X:550312.23' / Y:450397.26' LAT:32.23815431N / LON:104.17061115W LAST TAKE POINT 330' FNL 330' FEL NAD 83, SPCS NM EAST X:591495.46' / Y:450365.57' LAT:32.23802676N / LON:104.17110684W NAD 27, SPCS NM EAST X:550312.68' / Y:450307.23' LAT:32.23790686N / LON:104.170610124W SECTION 9 SECTION 10 SECTION 15 SECTION 16 FIRST TAKE POINT 330' FSL 330' FEL NAD 83, SPCS NM EAST X:591542.51' / Y:440449.91' LAT:32.21076944N / LON:104.17100310W NAD 27, SPCS NM EAST X:550359.55' / Y:440391.76' LAT:32.21064918N / LON:104.17050711W SURFACE HOLE LOCATION 170' FSL 360' FEL NAD 83, SPCS NM EAST X:591510.72' / Y:440290.43' LAT:32.21033118N / LON:104.17110667W NAD 27, SPCS NM EAST X:550327.76' / Y:440232.28' LAT:32.21021092N / LON:104.17061069W SECTION 16 SECTION 21 CORNER COORDINATES NAD 83, SPCS NM EAST A - Y: 450743.64' / X: 591992.43' B - Y: 450688.80' / X: 591923.83' C - Y: 440114.53' / X: 591868.86' D - Y: 440159.23' / X: 589132.63'		SECTION 3 SECTION 10 SECTION 15 SECTION 22 CORNER COORDINATES NAD 27, SPCS NM EAST A - Y: 450685.32' / X: 548009.70' B - Y: 450630.45' / X: 550641.05' C - Y: 440056.38' / X: 550685.89' D - Y: 440101.12' / X: 547949.72'	SECTION 2 SECTION 11 SECTION 14 SECTION 23 	¹⁷ OPERATOR CERTIFICATION I hereby certify that the information contained herein is true and complete to the best of my knowledge and belief, and that this organization either owns a working interest or undivided mineral interest in the land including the proposed bottom hole location or has a right to drill this well at this location pursuant to a contract with an owner of such a mineral or working interest, or to a voluntary pooling agreement or a compulsory pooling order heretofore entered by the division Signature: <i>Jason Goss</i> Date: 12/17/16 Printed Name: Jason Goss E-mail Address: jgoss@bcoperating.com ¹⁸ SURVEYOR CERTIFICATION I hereby certify that the well location shown on this plat was plotted from field notes of actual surveys made by me or under my supervision, and that the same is true and correct to the best of my belief. DECEMBER 19, 2016 Date of Survey Signature and Seal of Professional Surveyor: <i>LLOYD P. SHORT</i> Certificate Number: LLOYD P. SHORT 21653
----------------------------------------------------------------------------------------------------------------------------------------------------------------------------------------------------------------------------------------------------------------------------------------------------------------------------------------------------------------------------------------------------------------------------------------------------------------------------------------------------------------------------------------------------------------------------------------------------------------------------------------------------------------------------------------------------------------------------------------------------------------------------------------------------------------------------------------------------------------------------------------------------------------------------------------------------------------------------------------------------------------------------------------------------------------------------------------------------------------------------------------------------------------------------------------------------------------------------------------------------------------------------------------------------------------	--	-------------------------------------------------------------------------------------------------------------------------------------------------------------------------------------------------------------------------------------------------------	---------------------------------------------------------	-------------------------------------------------------------------------------------------------------------------------------------------------------------------------------------------------------------------------------------------------------------------------------------------------------------------------------------------------------------------------------------------------------------------------------------------------------------------------------------------------------------------------------------------------------------------------------------------------------------------------------------------------------------------------------------------------------------------------------------------------------------------------------------------------------------------------------------------------------------------------------------------------------------------------------------------------------------------------------------------------------------------------------------------------------------------------------------------

LOCATION VERIFICATION MAP

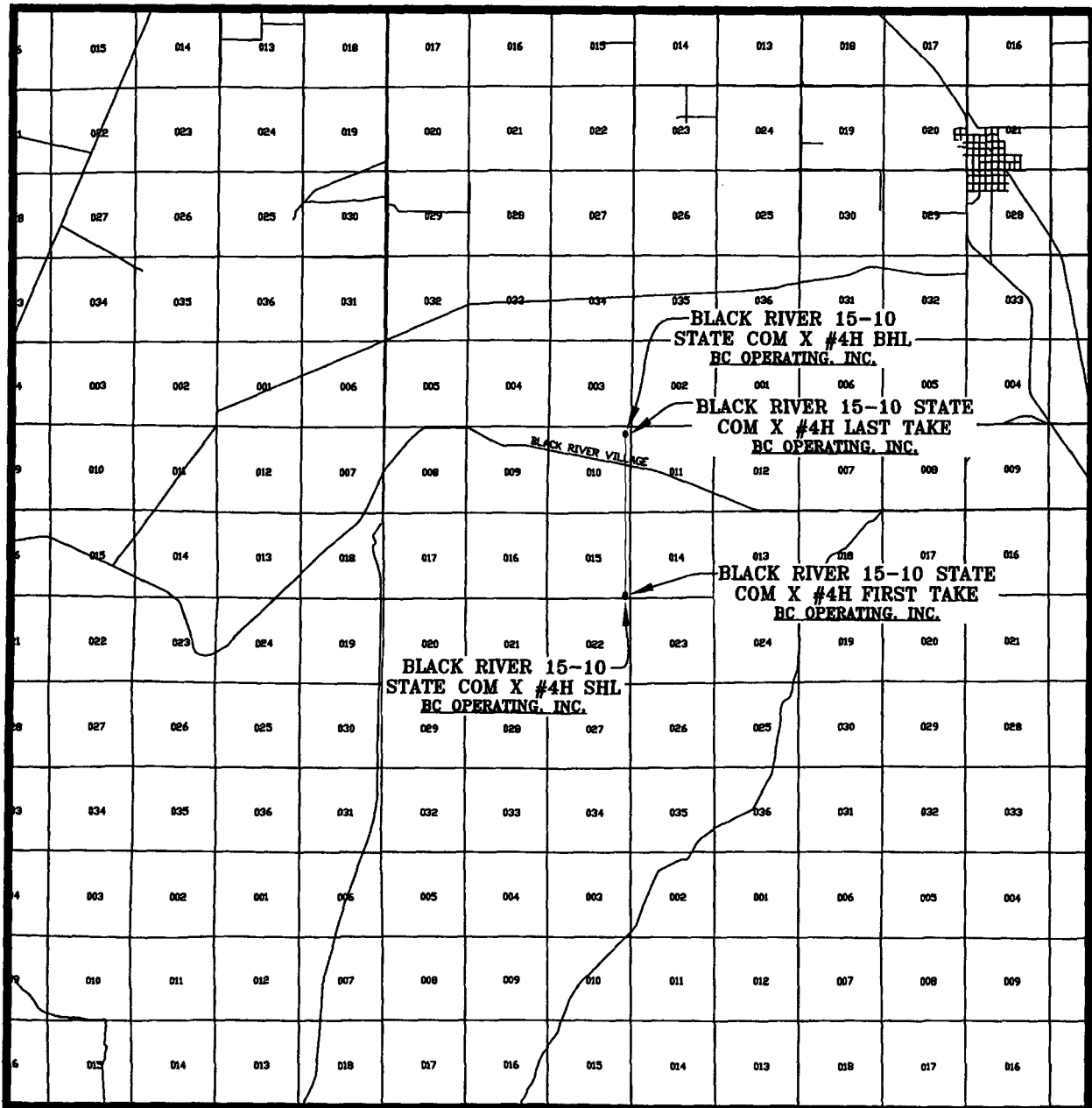


SEC. 15 TWP. 24-S RGE. 27-E
 SURVEY: N.M.P.M.
 COUNTY: EDDY
 DESCRIPTION: 170' FSL & 360' FEL
 ELEVATION: 3230'
 OPERATOR: B.C. OPERATING, INC.
 LEASE: BLACK RIVER 15-10 STATE COM X
 U.S.G.S. TOPOGRAPHIC MAP: BOND DRAW, N.M.

SCALE: 1" = 2000'
 CONTOUR INTERVAL = 10'

PREPARED BY:
 R-SQUARED GLOBAL, LLC
 1309 LOUISVILLE AVENUE, MONROE, LA 71201
 318-323-6900 OFFICE
 JOB No. R3671_001

VICINITY MAP



SEC. 15 TWP. 24-S RGE. 27-E

SURVEY: N.M.P.M.

COUNTY: EDDY

DESCRIPTION: 170' FSL & 360' FEL

ELEVATION: 3230'

OPERATOR: B.C. OPERATING, INC.

LEASE: BLACK RIVER 15-10 STATE COM X

U.S.G.S. TOPOGRAPHIC MAP: BOND DRAW, N.M.

SCALE: 1" = 2 MILES

PREPARED BY:
R-SQUARED GLOBAL, LLC
1309 LOUISVILLE AVENUE, MONROE, LA 71201
318-323-8900 OFFICE
JOB No. R3871_001

SEC. 15 TWP. 24-S RGE. 27-E
SURVEY: N.M.P.M.
COUNTY: EDDY
U.S.G.S. TOPOGRAPHIC MAP: BOND DRAW, N.M.

WELL PAD SITE
2.96 ACRES

BLACK RIVER
15-10 STATE
COM X #4H

L3 L4 S7

P.O.B:
L1

80D FND. IN ROCK
PILE FOR SE. COR.
OF SECTION 15

SECTION 23,
-24-S, R-27-E

SECTION 22,
T-24-S, R-27-E

PROPOSED LEASE ROAD

EXISTING
LEASE ROAD

EXISTING
DCP GAS
PIPELINE

A circular professional seal for Lloyd P. Short, a Professional Surveyor in New Mexico. The seal consists of three concentric circles. The outermost ring contains the text "LLOYD P. SHORT" at the top and "PROFESSIONAL SURVEYOR" at the bottom. The middle ring contains the text "NEW MEXICO". The innermost circle contains the number "21653".

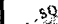
BC  OPERATING, INC.

PLAT FOR A SURFACE SITE ON THE PROPERTY OF
STATE OF NEW MEXICO
EDDY COUNTY, NEW MEXICO

EXISTING ROAD
LOT LINE
SURFACE SITE E
EXIST. PIPELINE

MONUMENT

PROPOSED LEASE ROAD
FENCE
SECTION LINE
OVERHEAD POWER
POLE

1	12/15/2016	SHL AND PAD RE-LOCATED	DEF	DEF
REV.	DATE	DESCRIPTION	BY	CHKD
SHEET 4 OF 7			1309 LOUISVILLE AVE.	
DRAWN BY: DEF			MONROE, LA 71201	
DATE: 08/29/2016			(318) 323-6900	
CHECKED BY: LPS			FAX (318) 362-0064	

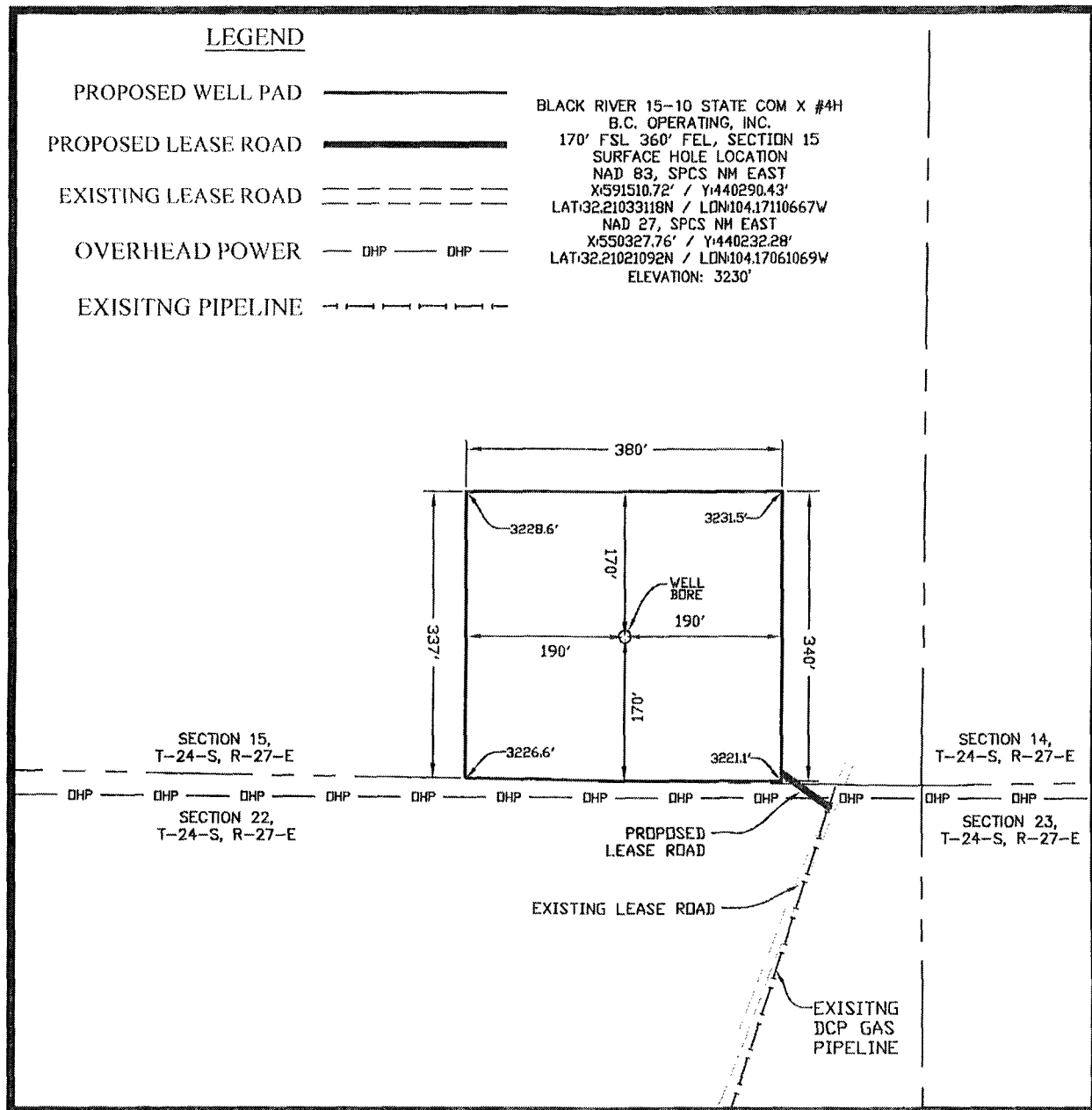
WELL PAD TOPO

SEC. 15 TWP. 24-S RGE. 27-E

SURVEY: N.M.P.M.

COUNTY: EDDY

U.S.G.S. TOPOGRAPHIC MAP: BOND DRAW, N.M.



NOTE:
THIS IS NOT A BOUNDARY SURVEY,
APPARENT PROPERTY CORNERS AND
PROPERTY LINES ARE SHOWN FOR
INFORMATION ONLY. BOUNDARY DATA
SHOWN IS FROM STATE OF NEW MEXICO
OIL CONSERVATION DIVISION FORM C-102
INCLUDED IN THIS SUBMITTAL.

DECEMBER 19, 2016

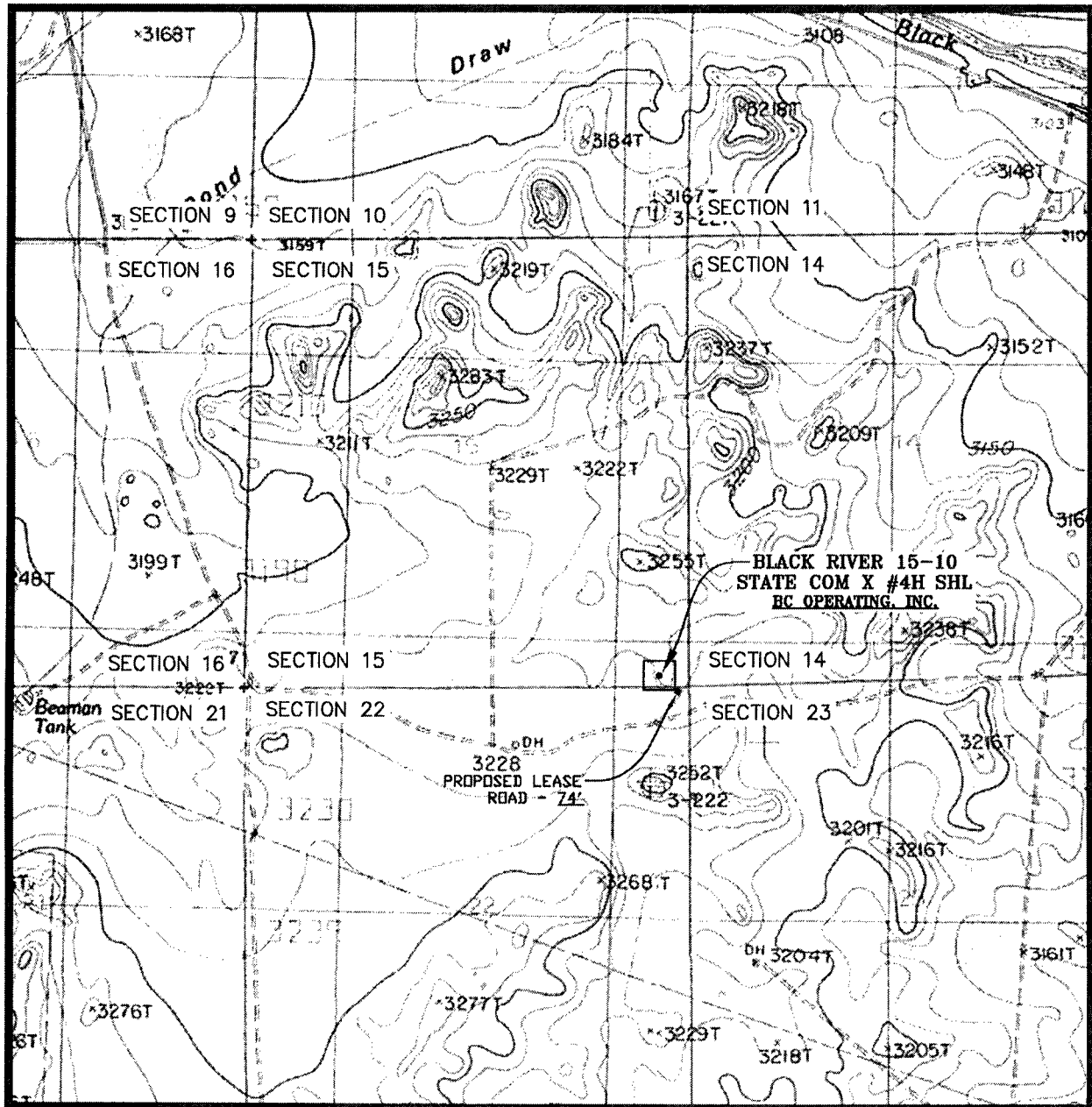
100' 0' 100' 200'
SCALE: 1" = 200'

LLOYD P. SHORT 21653



PREPARED BY:
R-SQUARED GLOBAL, LLC
1309 LOUISVILLE AVENUE, MONROE, LA 71201
318-323-6900 OFFICE
JOB No. R3671_001

WELL PAD LOCATION VERIFICATION MAP



SEC. 15 TWP. 24-S RGE. 27-E
 SURVEY: N.M.P.M.
 COUNTY: EDDY
 DESCRIPTION: 170' FSL & 360' FEL
 ELEVATION: 3230'
 OPERATOR: B.C. OPERATING, INC.
 LEASE: BLACK RIVER 15-10 STATE COM X
 U.S.G.S. TOPOGRAPHIC MAP: BOND DRAW, N.M.

SCALE: 1" = 2000'
 CONTOUR INTERVAL = 20'

PREPARED BY:
 R-SQUARED GLOBAL, LLC
 1309 LOUISVILLE AVENUE, MONROE, LA 71201
 318-323-8900 OFFICE
 JOB No. R3871_001

EXISTING ACCESS ROAD VICINITY MAP

BLACK RIVER 15-10 STATE COM X #4H

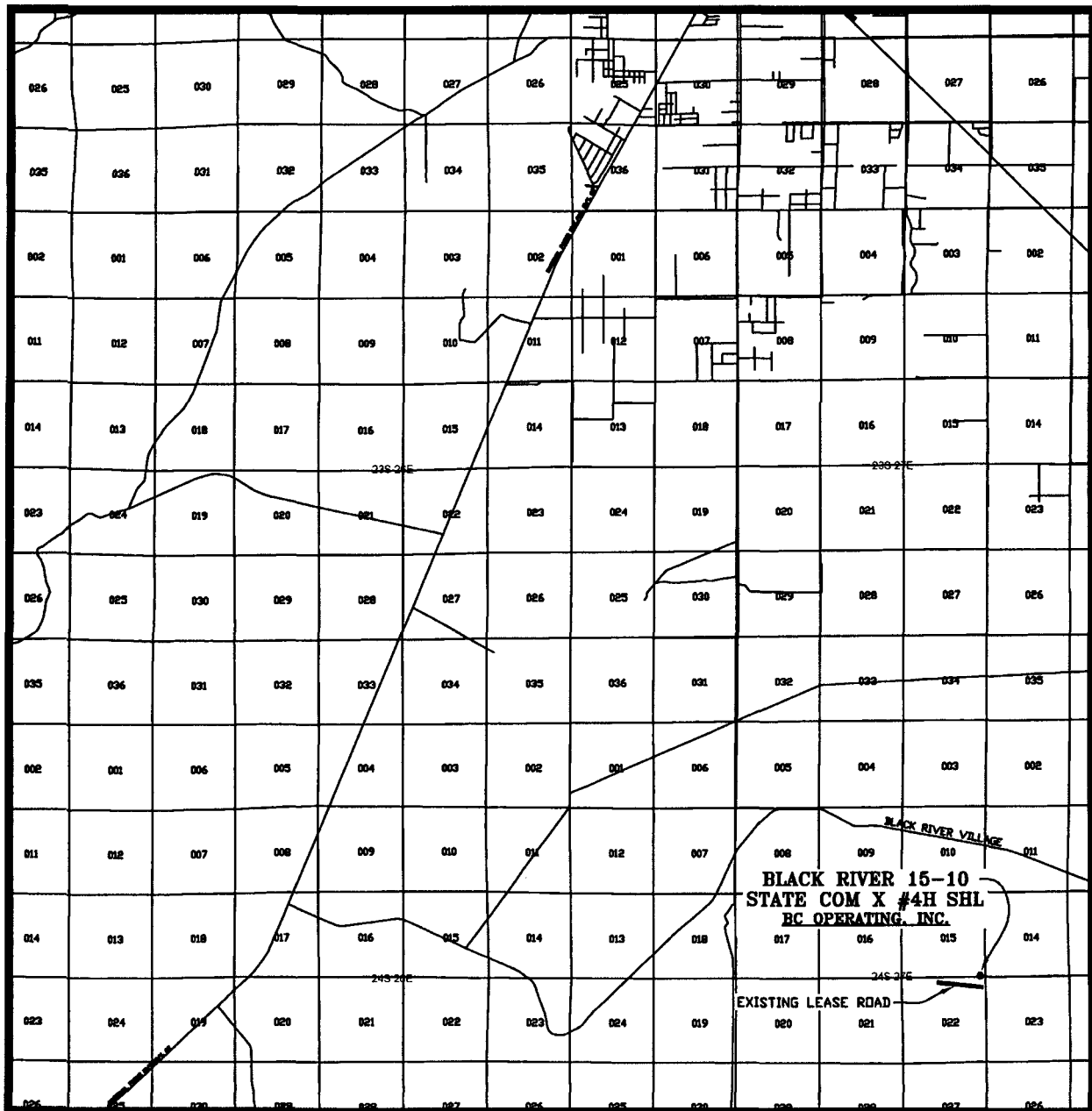
170' FSL & 360' FEL

SEC. 15 TWP. 24-S RGE. 27-E

SURVEY: N.M.P.M.

COUNTY: EDDY

U.S.G.S. TOPOGRAPHIC MAP: BOND DRAW, N.M.



SCALE: 1" = 2 MILES

PREPARED BY:
R-SQUARED GLOBAL, LLC
1309 LOUISVILLE AVENUE, MONROE, LA 71201
318-323-8900 OFFICE
JOB No. R3671_001