

# NM OIL CONSERVATION

ARTESIA DISTRICT

DISTRICT I  
1625 N. French Dr., Hobbs, NM 88240  
Phone: (505) 391-6161 Fax: (505) 393-0720  
DISTRICT II  
111 S. First St., Artesia, NM 88210  
Phone: (505) 748-1283 Fax: (505) 748-0720  
DISTRICT III  
1800 Rio Pecos Rd., Aztec, NM 87410  
Phone: (505) 334-6178 Fax: (505) 334-6170  
DISTRICT IV  
1220 S. St. Francis Dr., Santa Fe, NM 87505  
Phone: (505) 476-3460 Fax: (505) 476-3462

DEC 19 2016

RECEIVED

State of New Mexico  
Energy, Minerals & Natural Resources Department  
OIL CONSERVATION DIVISION  
1220 South St. Francis Dr.  
Santa Fe, New Mexico 87505

Form C-102  
Revised August 1, 2011  
Submit one copy to appropriate  
District Office  
☐ AMENDED REPORT

## WELL LOCATION AND ACREAGE DEDICATION PLAT

API Number 30-015-42014	Pool Code 10380	Pool Name CASS DRAW; BONE SPRING
Property Code 316682	Property Name WARREN FEE	Well Number 1
OGRID No. 246289	Operator Name RKI EXPLORATION & PRODUCTION	Elevation 3112'

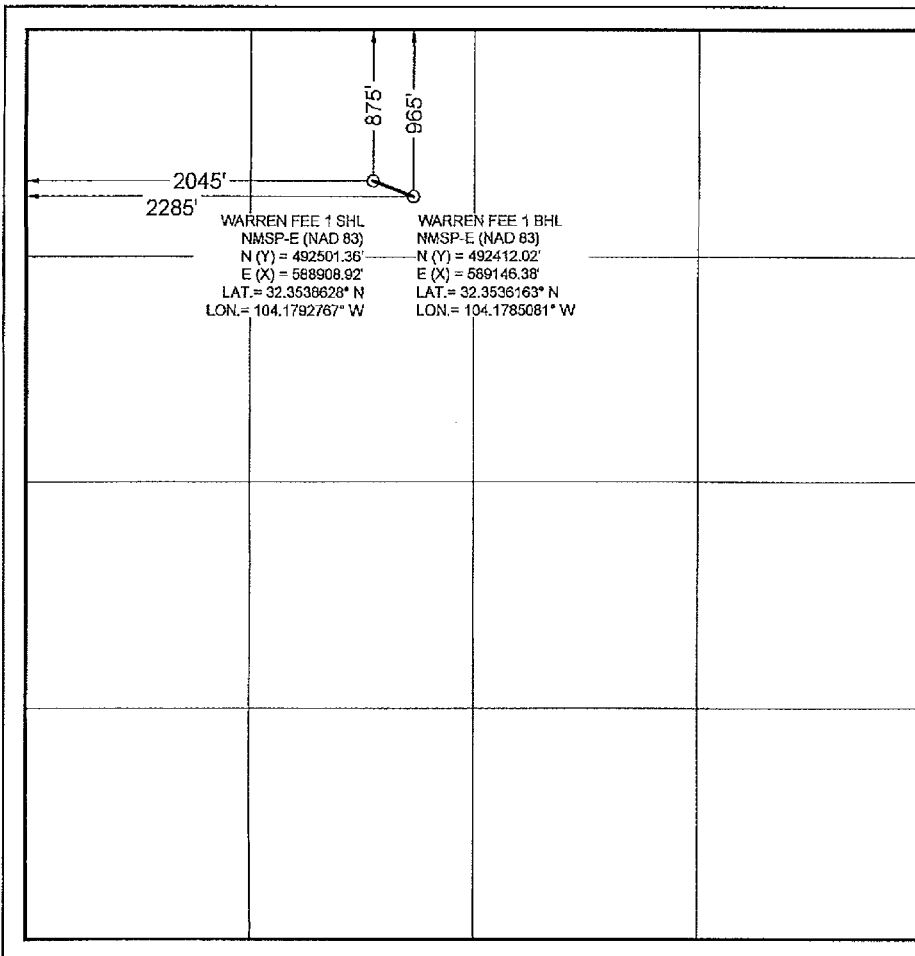
### Surface Location

UL or lot no.	Section	Township	Range	Lot Idn	Feet from the	North/South line	Feet from the	East/West line	County
C	34	22 S	27 E		875	NORTH	2045	WEST	EDDY

### Bottom Hole Location If Different From Surface

UL or lot no.	Section	Township	Range	Lot Idn	Feet from the	North/South line	Feet from the	East/West line	County
C	34	22 S	27 E		965	NORTH	2285	WEST	EDDY
Dedicated Acres 40	Joint or Infill	Consolidated Code	Order No.						

No allowable will be assigned to this completion until all interests have been consolidated or a non-standard unit has been approved by the division.



### OPERATOR CERTIFICATION

I hereby certify that the information contained herein is true and complete to the best of my knowledge and belief, and that this organization either owns a working interest or unleased mineral interest in the land including the proposed bottom hole location or has a right to drill this well at this location pursuant to a contract with an owner of such a mineral or working interest, or to voluntary pooling agreement or a compulsory pooling order heretofore entered by the division.

Signature: *Jessica Demarc* Date: 12/9/16  
Print Name: JESSICA DEMARCE  
E-mail Address: jessica.demarc@duprenenergy.com

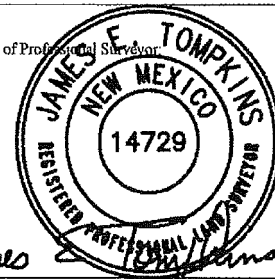
### SURVEYORS CERTIFICATION

I hereby certify that the well location shown on this plat was plotted from field notes of actual surveys made by me or under my supervision, and that the same is true and correct to the best of my belief.

DECEMBER 9, 2016

Date of Survey

Signature and Seal of Professional Surveyor



Job No.: WTC51519

JAMES E. TOMPKINS 14729

Certificate Number