

DISTRICT I
1625 N. French Dr., Hobbs, NM 88240
Phone: (575) 393-6161 Fax: (575) 393-0720

DISTRICT II
811 S. First St., Artesia, NM 88210
Phone: (575) 748-1283 Fax: (575) 748-1283

DISTRICT III
1000 Rio Brazos Road, Aztec, NM 87410
Phone: (505) 334-6178 Fax: (505) 334-6170

DISTRICT IV
1220 S. St. Francis Dr., Santa Fe, NM 87505
Phone: (505) 476-3460 Fax: (505) 476-3462

State of New Mexico
Energy, Minerals & Natural Resources Department
OIL CONSERVATION DIVISION
1220 South St. Francis Dr.
Santa Fe, New Mexico 87505

Form C-102

Revised August 1, 2011

Submit one copy to appropriate
District Office

AMENDED REPORT

HOBBS OCD
FEB 01 2017
REC

WELL LOCATION AND ACREAGE DEDICATION PLAT

API Number 30-015-43360	Pool Code 98220	Pool Name PURPLE SAGE; WOLFCAMP
Property Code 37294	Property Name 20702 HARROUN RANCH FEDERAL COM	Well Number 2H
OGRID No. 260297	Operator Name BTA OIL PRODUCERS	Elevation 2966'

Surface Location

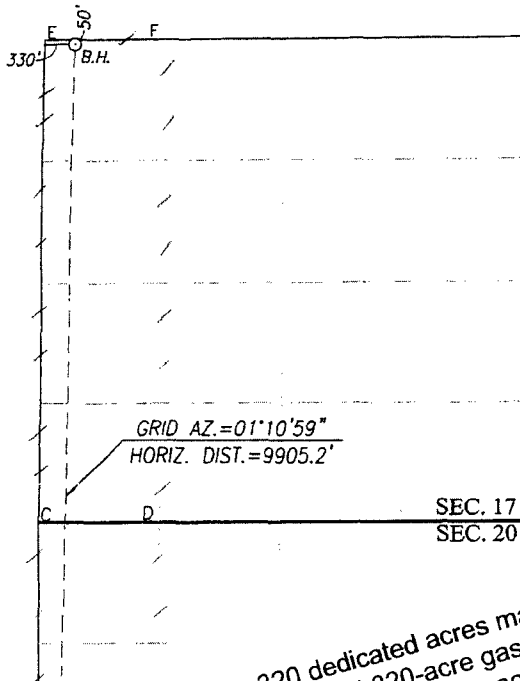
UL or lot No.	Section	Township	Range	Lot Idn	Feet from the	North/South line	Feet from the	East/West line	County
M	20	23-S	29-E		680	SOUTH	180	WEST	EDDY

Bottom Hole Location If Different From Surface

UL or lot No.	Section	Township	Range	Lot Idn	Feet from the	North/South line	Feet from the	East/West line	County
D	17	23-S	29-E		50	NORTH	330	WEST	EDDY

Dedicated Acres 320	Joint or Infill	Consolidation Code	Order No.
------------------------	-----------------	--------------------	-----------

NO ALLOWABLE WILL BE ASSIGNED TO THIS COMPLETION UNTIL ALL INTERESTS HAVE BEEN CONSOLIDATED OR A NON-STANDARD UNIT HAS BEEN APPROVED BY THE DIVISION



SCALE: 1"=2000'

BOTTOM HOLE LOCATION
NAD 83 NME
Y= 477472.2 N
X= 639931.5 E
LAT.=32.312240° N
LONG.=104.014191° W

BOTTOM HOLE LOCATION
NAD 27 NME
Y= 477412.6 N
X= 598748.5 E
LAT.=32.312119° N
LONG.=104.013697° W

CORNER COORDINATES TABLE
NAD 27 NME

A - Y= 466830.5 N, X= 598366.4 E
B - Y= 466841.9 N, X= 599669.7 E
C - Y= 472171.8 N, X= 598349.1 E
D - Y= 472176.3 N, X= 599672.6 E
E - Y= 477459.5 N, X= 598419.2 E
F - Y= 477471.7 N, X= 599735.2 E

CORNER COORDINATES TABLE
NAD 83 NME

A - Y= 466889.9 N, X= 639549.6 E
B - Y= 466901.3 N, X= 640852.9 E
C - Y= 472231.2 N, X= 639532.2 E
D - Y= 472235.8 N, X= 640855.7 E
E - Y= 477519.1 N, X= 639602.1 E
F - Y= 477531.4 N, X= 640918.1 E

GEODETIC COORDINATES
NAD 83 NME
SURFACE LOCATION
Y= 467571.3 N
X= 639727.0 E
LAT.=32.285026° N
LONG.=104.014947° W

GEODETIC COORDINATES
NAD 27 NME
SURFACE LOCATION
Y= 467511.9 N
X= 598543.8 E
LAT.=32.284904° N
LONG.=104.014455° W

OPERATOR CERTIFICATION

I hereby certify that the information herein is true and complete to the best of my knowledge and belief, and that this organization either owns a working interest or unleased mineral interest in the land including the proposed bottom hole location or has a right to drill this well at this location pursuant to a contract with an owner of such mineral or working interest, or to a voluntary pooling agreement or a compulsory pooling order heretofore entered by the division.

Kayla McConnell 1/26/16
Signature Date

KAYLA MCCONNELL
Printed Name

KMCCONNELL@BTAOIL.COM
E-mail Address

SURVEYOR CERTIFICATION

I hereby certify that the well location shown on this plat was plotted from field notes of actual surveys made by me or under my supervision, and that the same is true and correct to the best of my belief.

OCTOBER 20, 2016

Date of Survey
Signature & Seal of Professional Surveyor:

Ronald J. Eidson 10/25/2016
Certificate Number 12641
Ronald J. Eidson 3239

ACK REL W.O. 15110181 JWSC W.O. 16130834

...wells having less than 320 dedicated acres may increase spacing to the standard 320-acre gas spacing by filing application to increase spacing as provided by Division rules...

