

District I
1625 N. French Dr., Hobbs, NM 88240
Phone: (575) 393-6161 Fax: (575) 393-0720
District II
811 S. First St., Artesia, NM 88210
Phone: (575) 748-1283 Fax: (575) 748-9720
District III
1000 Rio Hrazos Road, Aztec, NM 87410
Phone: (505) 334-6178 Fax: (505) 334-6170
District IV
1220 S. St. Francis Dr., Santa Fe, NM 87505
Phone: (505) 476-3460 Fax: (505) 476-3462

State of New Mexico
Energy, Minerals & Natural Resources Department
OIL CONSERVATION DIVISION
1220 South St. Francis Dr.
Santa Fe, NM 87505

NM OIL CONSERVATION

ARTESIA DISTRICT

Form C-102

Revised August 1, 2011

Submit one copy to appropriate District Office

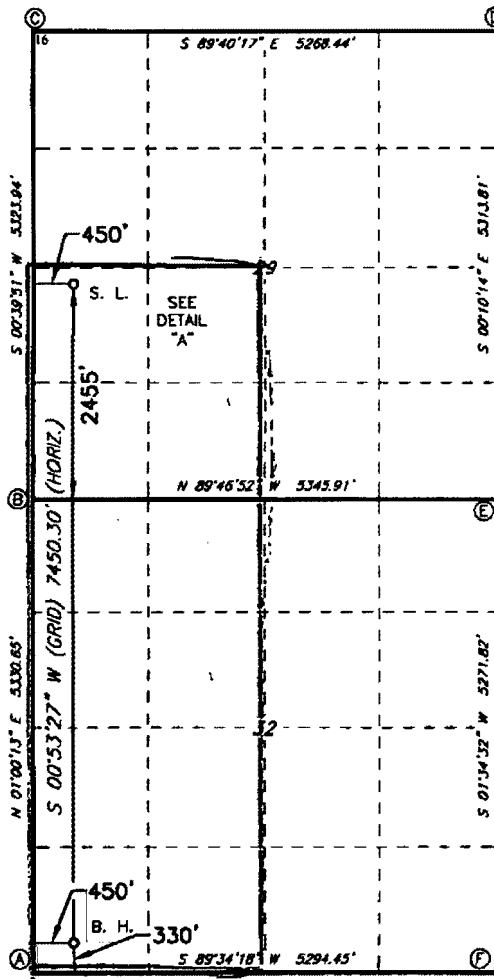
RECEIVED

AMENDED REPORT
2/1/17

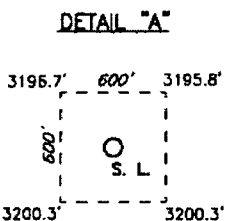
WELL LOCATION AND ACREAGE DEDICATION PLAT

1 API Number 30-015-43498		2 Pool Code 76780 98220		3 Pool Name PURPLE SAGE		4 Well Number 1H ✓	
4 Property Code 315711		5 Property Name VIPER 29/32 WOLM FED COM				6 Elevation 3198'	
7 OGRID NO. 14744		8 Operator Name MEWBOURNE OIL COMPANY					
10 Surface Location							
UL or lot no. L	Section 29	Township 23S	Range 27E	Lot Idn	Feet from the 2455	North/South line SOUTH	Feet From the 450
		East/West line WEST	County EDDY				
11 Bottom Hole Location If Different From Surface							
UL or lot no. M	Section 32	Township 23S	Range 27E	Lot Idn	Feet from the 335'	North/South line SOUTH	Feet from the 414
		East/West line WEST	County EDDY				
12 Dedicated Acres 480	13 Joint or Infill	14 Consolidation Code	15 Order No. NSL-7444 NSP-2049 R-14262				

No allowable will be assigned to this completion until all interest have been consolidated or a non-standard unit has been approved by the division.



GEODETIC DATA
NAD 27 GRID - NM EAST
SURFACE LOCATION
N 463802.2 - E 535416.2
LAT: 32.27505717° N
LONG: 104.21874220° W
BOTTOM HOLE
N 456354.6 - E 535300.4
CORNER DATA
NAD 27 GRID - NM EAST
A: CALCULATED CORNER
N 456021.2 - E 534844.5
B: CALCULATED CORNER
N 461349.8 - E 534937.8
C: CALCULATED CORNER
N 466672.1 - E 534999.5
D: FOUND 1-1/2\"/>



17 OPERATOR CERTIFICATION

I hereby certify that the information contained herein is true and complete to the best of my knowledge and belief, and that this organization either owns a working interest or unleased mineral interest in the land including the proposed bottom hole location or has a right to drill this well at this location pursuant to a contract with an owner of such a mineral or working interest, or to a voluntary pooling agreement or a compulsory pooling order heretofore entered by the division.

Signature: **Jackie Lathan** Date: **3/14/16**
Printed Name: **Jackie Lathan**

E-mail Address

18 SURVEYOR CERTIFICATION

I hereby certify that the well location shown on this plat was plotted from field notes of actual surveys made by me or under my supervision, and that the same is true and correct to the best of my belief.

6-22-2015

Date of Survey

Signature and Seal of Professional Surveyor

19880

Certificate Number

