

District I
1625 N. French Dr., Hobbs, NM 88240
Phone: (575) 393-6161 Fax: (575) 393-0720
District II
811 S. First St., Artesia, NM 88210
Phone: (575) 748-1283 Fax: (575) 748-9720
District III
1000 Rio Brazos Road, Aztec, NM 87410
Phone: (505) 334-6178 Fax: (505) 334-6170
District IV
1220 S. St. Francis Dr., Santa Fe, NM 87505
Phone: (505) 476-3460 Fax: (505) 476-3462

State of New Mexico
Energy, Minerals & Natural Resources Department
NM OIL CONSERVATION
ARTESIA DISTRICT
OIL CONSERVATION DIVISION
1220 South St. Francis Dr.
Santa Fe, NM 87505

Form C-102
Revised August 1, 2011
Submit one copy to appropriate
District Office

MAR 17 2017

☒ AMENDED REPORT

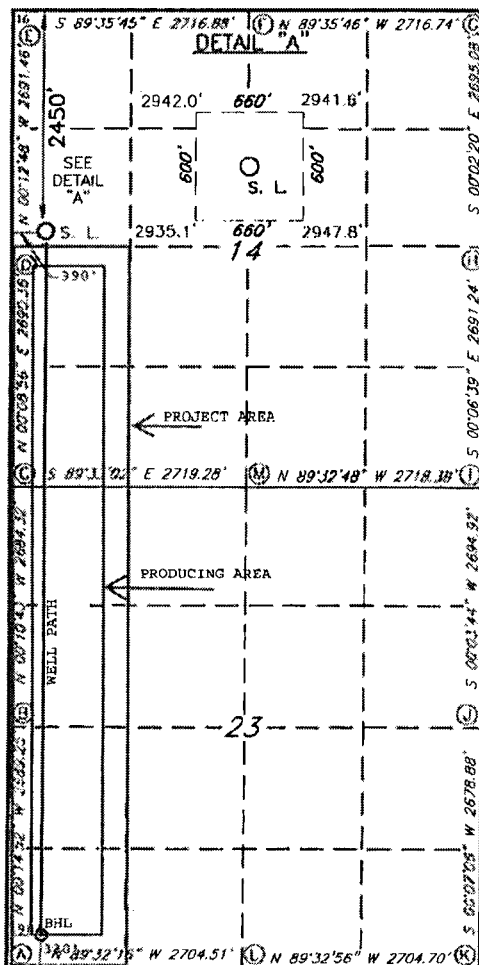
Correct well name

RECEIVED

WELL LOCATION AND ACREAGE DEDICATION PLAT

1 API Number 30-015-43859		2 Pool Code 98220		3 Pool Name Purple Sage 1 WOLFCAMP GAS	
4 Property Code 317543		5 Property Name FULLER 14/23 WLM FED COM			6 Well Number 2H
7 GRID NO. 14744		8 Operator Name MEWBOURNE OIL COMPANY			9 Elevation 2936'
10 Surface Location					
UL or lot no. E	Section 14	Township 26S	Range 29E	Lot Idn 2450	Feet from the NORTH
				Feet from the 390	East/West line WEST
				County EDDY	
11 Bottom Hole Location If Different From Surface					
UL or lot no. M	Section 23	Township 26S	Range 29E	Lot Idn 330	Feet from the SOUTH
				Feet from the 390	East/West line WEST
				County EDDY	
12 Dedicated Acres 240	13 Joint or Infill	14 Consolidation Code	15 Order No.		

No allowable will be assigned to this completion until all interest have been consolidated or a non-standard unit has been approved by the division.



GEODETIC DATA
NAD 27 GRID - NM EAST
SURFACE LOCATION
N 379410.8 - E 615270.4
LAT: 32.04256934 N
LONG: 103.9611624 W

BOTTOM LOCATION
N 371437.4 - E 615223.0

CORNER DATA
NAD 27 GRID - NM EAST
A: FOUND BRASS CAP "1940"
N 371110.0 - E 614894.4
B: FOUND BRASS CAP "1940"
N 373798.7 - E 614882.7
C: FOUND BRASS CAP "1940"
N 376482.4 - E 614874.4
D: FOUND BRASS CAP "1940"
N 379172.2 - E 614881.4

E: FOUND BRASS CAP "1940"
N 381853.1 - E 614871.4
F: FOUND BRASS CAP "1940"
N 381843.9 - E 617587.6
G: FOUND BRASS CAP "1940"
N 381824.7 - E 620303.7
H: FOUND BRASS CAP "1940"
N 379130.2 - E 620305.5

I: FOUND BRASS CAP "1940"
N 376439.6 - E 620310.7

J: FOUND BRASS CAP "1940"
N 373745.2 - E 620307.8

K: FOUND BRASS CAP "1940"
N 371066.9 - E 620302.3

L: FOUND BRASS CAP "1940"
N 371088.2 - E 617598.2

M: FOUND BRASS CAP "1940"
N 376461.1 - E 617593.0

17 OPERATOR CERTIFICATION

I hereby certify that the information contained herein is true and complete to the best of my knowledge and belief, and that this organization either owns a working interest or unleased mineral interest in the land including the proposed bottom hole location or has a right to drill this well at this location pursuant to a contract with an owner of such a mineral or working interest, or to a voluntary pooling agreement or a compulsory pooling order heretofore entered by the division

Signature _____ Date 11-02-16

BRADLEY BISHOP
Printed Name

E-mail Address

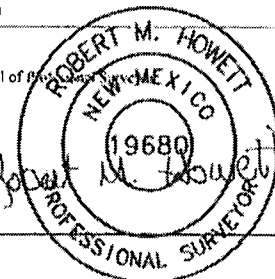
18 SURVEYOR CERTIFICATION

I hereby certify that the well location shown on this plat was plotted from field notes of actual surveys made by me or under my supervision, and that the same is true and correct to the best of my belief.

4-9-15

Date of Survey

Signature and Seal of



19680

Certificate Number