

District I
1625 N. French Dr., Hobbs, NM 88240
Phone: (575) 393-6161 Fax: (575) 393-0720
District II
811 S. First St., Artesia, NM 88210
Phone: (575) 748-1283 Fax: (575) 748-9720
District III
1000 Rio Brazos Road, Aztec, NM 87410
Phone: (505) 334-6178 Fax: (505) 334-6170
District IV
1220 S. St. Francis Dr., Santa Fe, NM 87505
Phone: (505) 476-3460 Fax: (505) 476-3462

State of New Mexico
Energy, Minerals & Natural Resources Department
OIL CONSERVATION DIVISION
1220 South St. Francis Dr.
Santa Fe, NM 87505

Form C-102
Revised August 1, 2011
Submit one copy to appropriate
District Office
 AMENDED REPORT

WELL LOCATION AND ACREAGE DEDICATION PLAT

¹ API Number 30-015-44012	² Pool Code 98220	³ Pool Name Purple Sage Wolfcamp
⁴ Property Code 315004	⁵ Property Name STAMPEDE 34 FEDERAL COM W2	
⁷ GRID No. 217817	⁸ Operator Name ConocoPhillips Company	⁶ Well Number 10H ⁹ Elevation 3138.0'

¹⁰ Surface Location

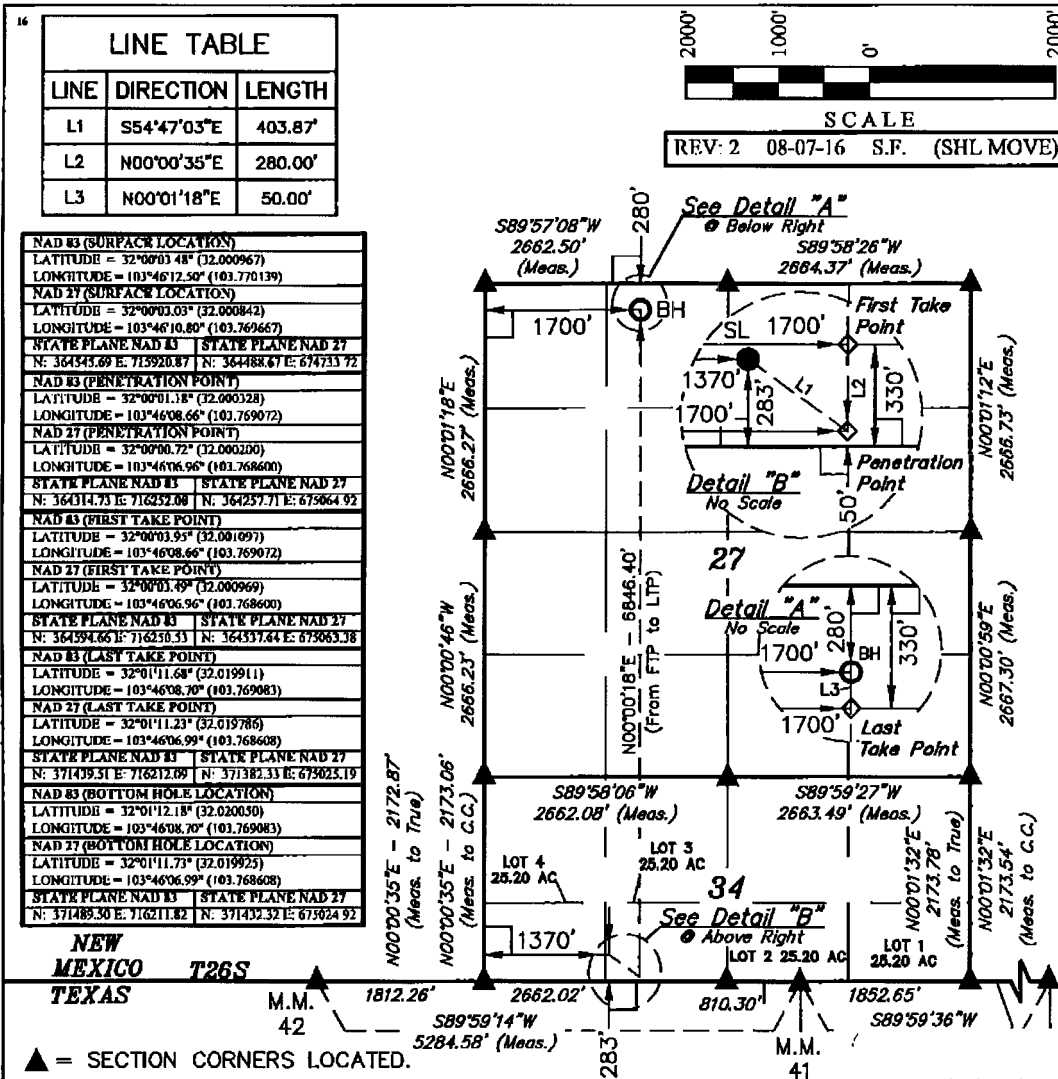
UL or lot no.	Section	Township	Range	Lot Idn	Feet from the	North/South line	Feet from the	East/West line	County
3	34	26 S	31 E		283	SOUTH	1370	WEST	EDDY

¹¹ Bottom Hole Location If Different From Surface

UL or lot no.	Section	Township	Range	Lot Idn	Feet from the	North/South line	Feet from the	East/West line	County
C	27	26 S	31 E		280	NORTH	1700	WEST	EDDY

¹² Dedicated Acres: 450.4
¹³ Joint or Infill: 275.2
¹⁴ Consolidation Code: C
¹⁵ Order No.: R-14262

No allowable will be assigned to this completion until all interests have been consolidated or a non-standard unit has been approved by the division.



"OPERATOR CERTIFICATION"
I hereby certify that the information contained herein is true and complete to the best of my knowledge and belief, and that this organization either owns a working interest or unleased mineral interest in the land including the proposed bottom hole location or has a right to drill this well at this location pursuant to a contract with an owner of such a mineral or working interest, or to a voluntary pooling agreement or a compulsory pooling order heretofore entered by the division.

Ashley Bergen
Signature Date

Ashley Bergen
Printed Name

ashley.bergen@cop.com
E-mail Address

"SURVEYOR CERTIFICATION"
I hereby certify that the well location shown on this plat was plotted from field notes of actual surveys made by me or under my supervision, and that the same is true and correct to the best of my belief.

June 24, 2014
Date of Survey

Signature and Seal of Professional Surveyor:
Nelson J. Marshall

PROFESSIONAL SURVEYOR
NEW MEXICO
12446
NELSON J. MARSHALL-16

...wells having less than 320 dedicated acres may increase spacing to the standard 320-acre gas spacing by filing application to increase spacing as provided by Division rules...