

**DISTRICT I**  
1625 N. French Dr., Hobbs, NM 88240  
Phone: (575) 393-6161 Fax: (575) 393-0720  
**DISTRICT II**  
811 S. First St., Artesia, NM 88210  
Phone: (575) 748-1283 Fax: (575) 748-9720  
**DISTRICT III**  
1000 Rio Brazos Rd., Aztec, NM 87410  
Phone: (505) 334-6178 Fax: (505) 334-6170  
**DISTRICT IV**  
1220 S. St. Francis Dr., Santa Fe, NM 87505  
Phone: (505) 476-3460 Fax: (505) 476-3462

State of New Mexico  
Energy, Minerals & Natural Resources Department  
**OIL CONSERVATION DIVISION**  
1220 South St. Francis Dr.  
Santa Fe, New Mexico 87505

Form C-102  
Revised August 1, 2011  
Submit one copy to appropriate  
District Office  
☒ **AMENDED REPORT**

**WELL LOCATION AND ACREAGE DEDICATION PLAT AS DRILLED PLAT**

API Number <b>30-015-43603</b>	Pool Code <b>98220</b>	Pool Name <b>PURPLE SAGE-WOLFCAMP GAS POOL</b>
Property Code <b>38962</b>	Property Name <b>NORTH BRUSHY DRAW FEDERAL 35</b>	Well Number <b>12H</b>
OGRID No. <b>246289</b>	Operator Name <b>RKI EXPLORATION &amp; PRODUCTION</b>	Elevation <b>3011'</b>

**Surface Location**

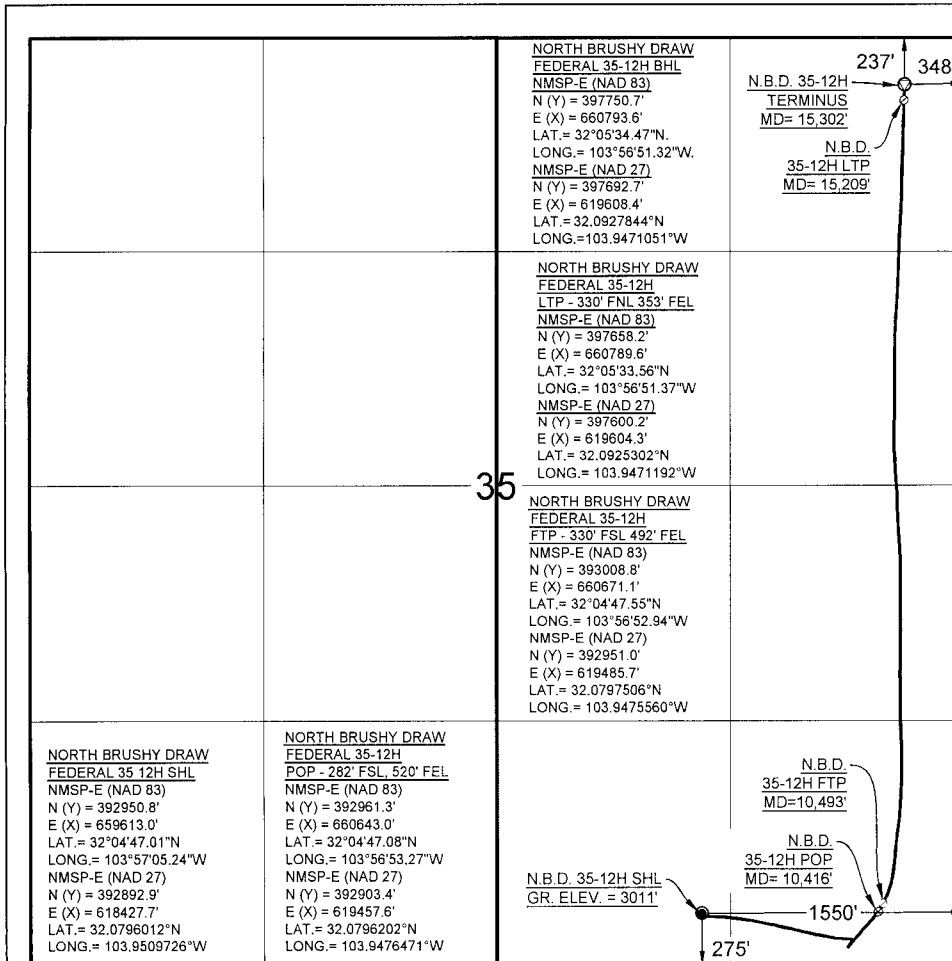
UL or lot no.	Section	Township	Range	Lot Idn	Feet from the	North/South line	Feet from the	East/West line	County
<b>O</b>	<b>35</b>	<b>25S</b>	<b>29E</b>		<b>275</b>	<b>S</b>	<b>1550</b>	<b>E</b>	<b>EDDY</b>

**Bottom Hole Location If Different From Surface**

UL or lot no.	Section	Township	Range	Lot Idn	Feet from the	North/South line	Feet from the	East/West line	County
<b>P</b>	<b>35</b>	<b>25S</b>	<b>29E</b>		<b>237</b>	<b>N</b>	<b>348</b>	<b>E</b>	<b>EDDY</b>

Dedicated Acres <b>320.00</b> E 1/2 OF SEC. 35	Joint or Infill	Consolidated Code	Order No
--	-----------------	-------------------	----------

No allowable will be assigned to this completion until all interests have been consolidated or a non-standard unit has been approved by the division.



**OPERATOR CERTIFICATION**

I hereby certify that the information contained herein is true and complete to the best of my knowledge and belief, and that this organization either owns a working interest or unleased mineral interest in the land including the proposed bottom hole location or has a right to drill this well at this location pursuant to a contract with an owner of such a mineral or working interest, or to voluntary pooling agreement or a compulsory pooling order heretofore entered by the division.

*Josh Walker* 2/27/17  
Signature Date  
josh.walker@upenergy.com  
Print Name  
Josh Walker  
E-mail Address

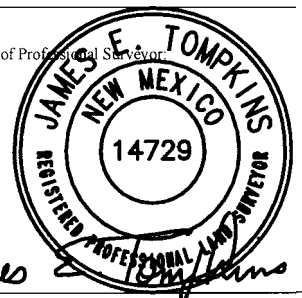
**SURVEYORS CERTIFICATION**

I hereby certify that the well location shown on this plat was plotted from field notes of actual surveys made by me or under my supervision, and that the same is true and correct to the best of my belief.

AUGUST 19, 2016

Date of Survey

Signature and Seal of Professional Surveyor



Job No. WTC51308  
JAMES E. TOMPKINS 14729  
Certificate Number