

# NM OIL CONSERVATION

**DISTRICT I**  
1625 N. French Dr., Hobbs, NM 88240  
Phone: (575) 393-6161 Fax: (575) 393-0720

**DISTRICT II**  
811 S. First St., Artesia, NM 88210  
Phone: (575) 748-1283 Fax: (575) 748-9720

**DISTRICT III**  
1000 Rio Brazos Road, Aztec, NM 87410  
Phone: (505) 334-6178 Fax: (505) 334-6170

**DISTRICT IV**  
1220 S. St. Francis Dr., Santa Fe, NM 87505  
Phone: (505) 476-3460 Fax: (505) 476-3462

ARTESIA DISTRICT

FEB 29 2017

RECEIVED

State of New Mexico

Energy, Minerals & Natural Resources Department

OIL CONSERVATION DIVISION

1220 South St. Francis Dr.  
Santa Fe, New Mexico 87505

Form C-102

Revised August 1, 2011

Submit one copy to appropriate  
District Office

X AMENDED REPORT

## WELL LOCATION AND ACREAGE DEDICATION PLAT

API Number <b>30-015-43995</b>	Pool Code <b>98220</b>	Pool Name <b>Purple Sage - Wolfcamp Gas Pool</b>
Property Code <b>317165</b>	Property Name <b>WILLOW LAKE WA 15</b>	Well Number <b>1H</b>
OGRID No. <b>12361</b>	Operator Name <b>KAISER-FRANCIS OIL COMPANY</b>	Elevation <b>2990'</b>

### Surface Location

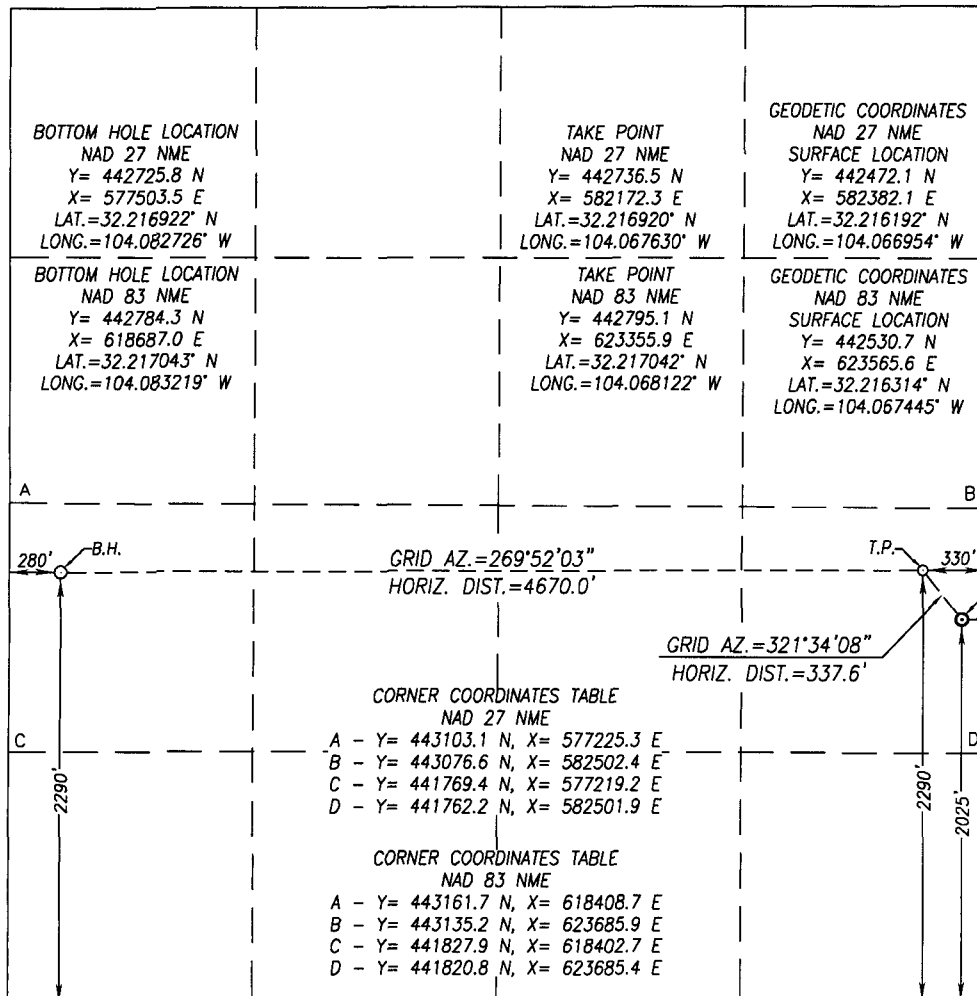
UL or lot No.	Section	Township	Range	Lot Idn	Feet from the	North/South line	Feet from the	East/West line	County
<b>I</b>	<b>15</b>	<b>24S</b>	<b>28E</b>		<b>2025</b>	<b>South</b>	<b>120</b>	<b>East</b>	<b>Eddy</b>

### Bottom Hole Location If Different From Surface

UL or lot No.	Section	Township	Range	Lot Idn	Feet from the	North/South line	Feet from the	East/West line	County
<b>L</b>	<b>15</b>	<b>24S</b>	<b>28E</b>		<b>2290</b>	<b>SOUTH</b>	<b>280</b>	<b>WEST</b>	<b>EDDY</b>

Dedicated Acres	Joint or Infill	Consolidation Code	Order No.
<b>320</b>			

NO ALLOWABLE WILL BE ASSIGNED TO THIS COMPLETION UNTIL ALL INTERESTS HAVE BEEN CONSOLIDATED OR A NON-STANDARD UNIT HAS BEEN APPROVED BY THE DIVISION



### OPERATOR CERTIFICATION

I hereby certify that the information herein is true and complete to the best of my knowledge and belief, and that this organization either owns a working interest or unleased mineral interest in the land including the proposed bottom hole location or has a right to drill this well at this location pursuant to a contract with an owner of such mineral or working interest, or to a voluntary pooling agreement or a compulsory pooling order heretofore entered by the division.

Signature: *C. Jay Valkenburg* Date: *2/21/17*

Printed Name: **Charlotte Van Valkenburg**

E-mail Address: **Charlotv@kfoc.net**

### SURVEYOR CERTIFICATION

I hereby certify that the well location shown on this plat was plotted from field notes of actual surveys made by me or under my supervision, and that the same is true and correct to the best of my belief.

Date of Survey: *11/29/2016*  
Signature & Seal of Professional Surveyor: *Ronald J. Eidson*  
REGISTERED PROFESSIONAL SURVEYOR

Certificate Number: **8239**  
Gary G. Eidson 12641  
Ronald J. Eidson 3239

ACK

JWSC W.O.: 16.11.0878