

DISTRICT I
1625 N. French Dr., Hobbs, NM 88240
Phone: (575) 393-6161 Fax: (575) 393-0720

DISTRICT II
811 S. First St., Artesia, NM 88210
Phone: (575) 748-1283 Fax: (575) 748-9720

DISTRICT III
1000 Rio Brazos Road, Aztec, NM 87410
Phone: (505) 334-6178 Fax: (505) 334-6170

DISTRICT IV
1220 S. St. Francis Dr., Santa Fe, NM 87505
Phone: (505) 476-3460 Fax: (505) 476-3462

State of New Mexico
Energy, Minerals & Natural Resources Department
OIL CONSERVATION DIVISION
1220 South St. Francis Dr.
Santa Fe, New Mexico 87505

APR 14 2017

Revised August 1, 2011

Submit one copy to appropriate
District Office

RECEIVED

AMENDED REPORT

WELL LOCATION AND ACREAGE DEDICATION PLAT

API Number 30-015-43674	Pool Code 98220	Pool Name Purple Sage; Wolfcamp (Gas)
Property Code 39924	Property Name MAD RIVER 13 STATE COM	Well Number. 1H
OGRID No. 249099	Operator Name CAZA OPERATING, LLC	Elevation 3129'

Surface Location

UL or lot No.	Section	Township	Range	Lot Idn	Feet from the	North/South line	Feet from the	East/West line	County
N	13	24-S	27-E		330	SOUTH	2310	WEST	EDDY

Bottom Hole Location If Different From Surface

UL or lot No.	Section	Township	Range	Lot Idn	Feet from the	North/South line	Feet from the	East/West line	County
C	13	24-S	27-E		330	NORTH	1980	WEST	EDDY

Dedicated Acres	Joint or Infill	Consolidation Code	Order No.
320			

NO ALLOWABLE WILL BE ASSIGNED TO THIS COMPLETION UNTIL ALL INTERESTS HAVE BEEN CONSOLIDATED OR A NON-STANDARD UNIT HAS BEEN APPROVED BY THE DIVISION

CORNER COORDINATES TABLE

A	-	Y=445561.1 N, X=557298.8 E
B	-	Y=445569.6 N, X=558642.2 E
C	-	Y=440203.6 N, X=558657.5 E
D	-	Y=440170.5 N, X=557316.5 E

GEODETTIC COORDINATES
NAD 27 NME

SURFACE LOCATION
Y=440524.4 N
X=558283.6 E

BOTTOM HOLE LOCATION
Y=445235.2 N
X=557936.1 E

PRODUCING AREA
GRID AZ. = 355°46'48"
HORIZ. DIST. = 4724.8'

OPERATOR CERTIFICATION
I hereby certify that the information herein is true and complete to the best of my knowledge and belief, and that this organization either owns a working interest or unleased mineral interest in the land including the proposed bottom hole location or has a right to drill this well at this location pursuant to a contract with an owner of such mineral or working interest, or to a voluntary pooling agreement or a compulsory pooling order heretofore entered by the division.

Signature: [Signature] Date: 04/11/2017
Steve Morris
Printed Name
steve.morris@mojoenergy.com
E-mail Address

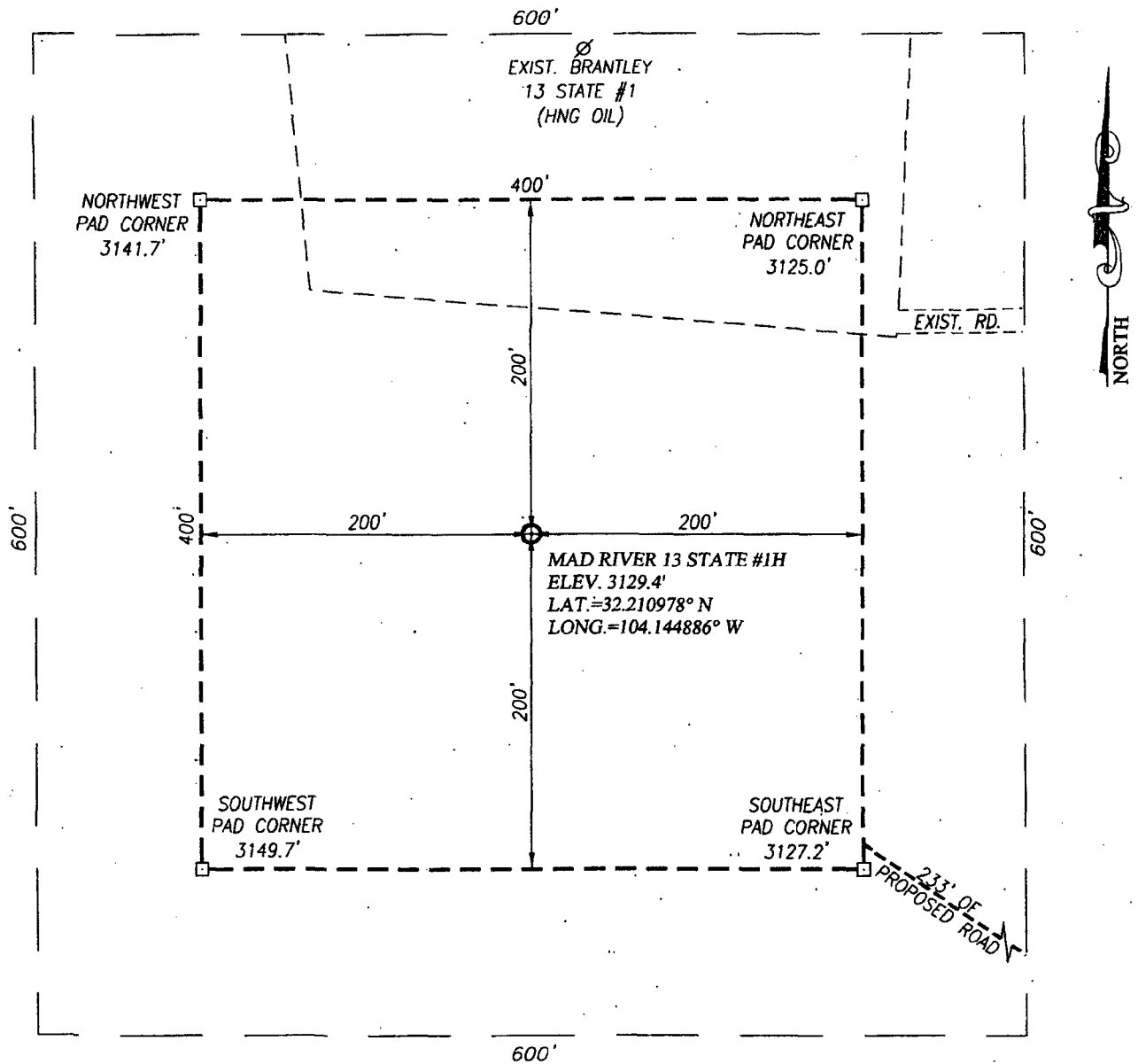
SURVEYOR CERTIFICATION
I hereby certify that the well location shown on this plat was plotted from field notes of actual surveys made by me or under my supervision, and that the same is true and correct to the best of my belief.

APRIL 24, 2013

Date of Survey: 04/11/2017
Signature: [Signature] Seal of Professional Surveyor:
RONALD J. EIDSON
NEW MEXICO
REGISTERED PROFESSIONAL SURVEYOR
3239
05/14/2013
Certificate Number: 0419 Gary G. Eidson 12641
Ronald J. Eidson 3239

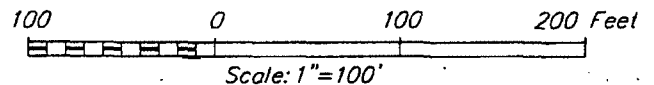
BKL JWSC W.O.: 13.11.0420

SECTION 13, TOWNSHIP 24 SOUTH, RANGE 27 EAST, N.M.P.M.
EDDY COUNTY **NEW MEXICO**



DIRECTIONS TO MAD RIVER 13 STATE #1H:

FROM THE INTERSECTION OF BLACK RIVER VILLAGE (CO. RD. 720) AND ROAD RUNNER (CO. RD. 774) GO SOUTHWEST ON ROAD RUNNER APPROX. 2.2 MILES; TURN RIGHT AND GO WEST APPROX. 0.15 MILES; VEER RIGHT AND CONTINUE NORTHWEST APPROX. 320 FEET; VEER RIGHT AND GO NORTH APPROX. 0.1 MILES. TURN LEFT AND GO WEST APPROX. 0.4 MILES TO A PROPOSED ROAD SURVEY. FOLLOW ROAD SURVEY NORTHWEST APPROX. 0.1 MILE TO THIS LOCATION.



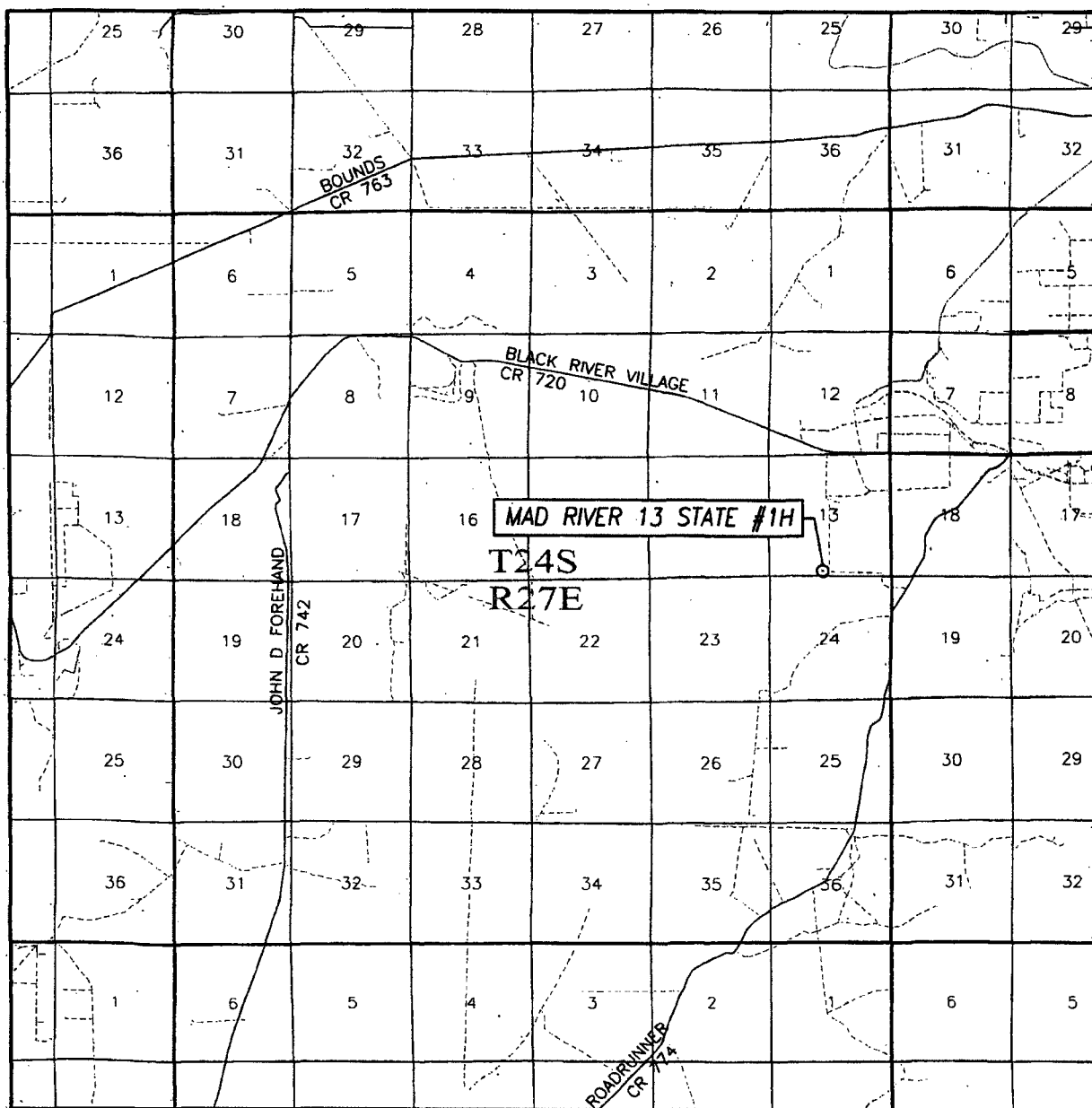
CAZA OPERATING, LLC

MAD RIVER 13 STATE #1H WELL
LOCATED 330 FEET FROM THE SOUTH LINE
AND 2310 FEET FROM THE WEST LINE OF SECTION 13,
TOWNSHIP 24 SOUTH, RANGE 27 EAST, N.M.P.M.,
EDDY COUNTY, NEW MEXICO

PROVIDING SURVEYING SERVICES
 SINCE 1946
JOHN WEST SURVEYING COMPANY
 412 N. DAL PASO
 HOBBS, N.M. 88240
 (575) 393-3117 www.jwsc.biz

Survey Date: 4/24/13	CAD Date: 5/10/13	Drawn By: BKL
W.O. No.: 13110420	Rev.:	Rel. W.O.:
		Sheet 1 of 1

VICINITY MAP



SCALE: 1" = 2 MILES

SEC. 13 TWP. 24-S RGE. 27-E

SURVEY N.M.P.M.

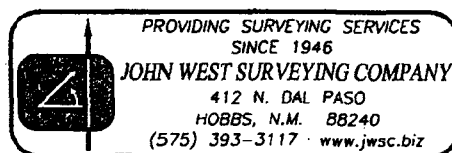
COUNTY EDDY STATE NEW MEXICO

DESCRIPTION 330' FSL & 2310' FWL

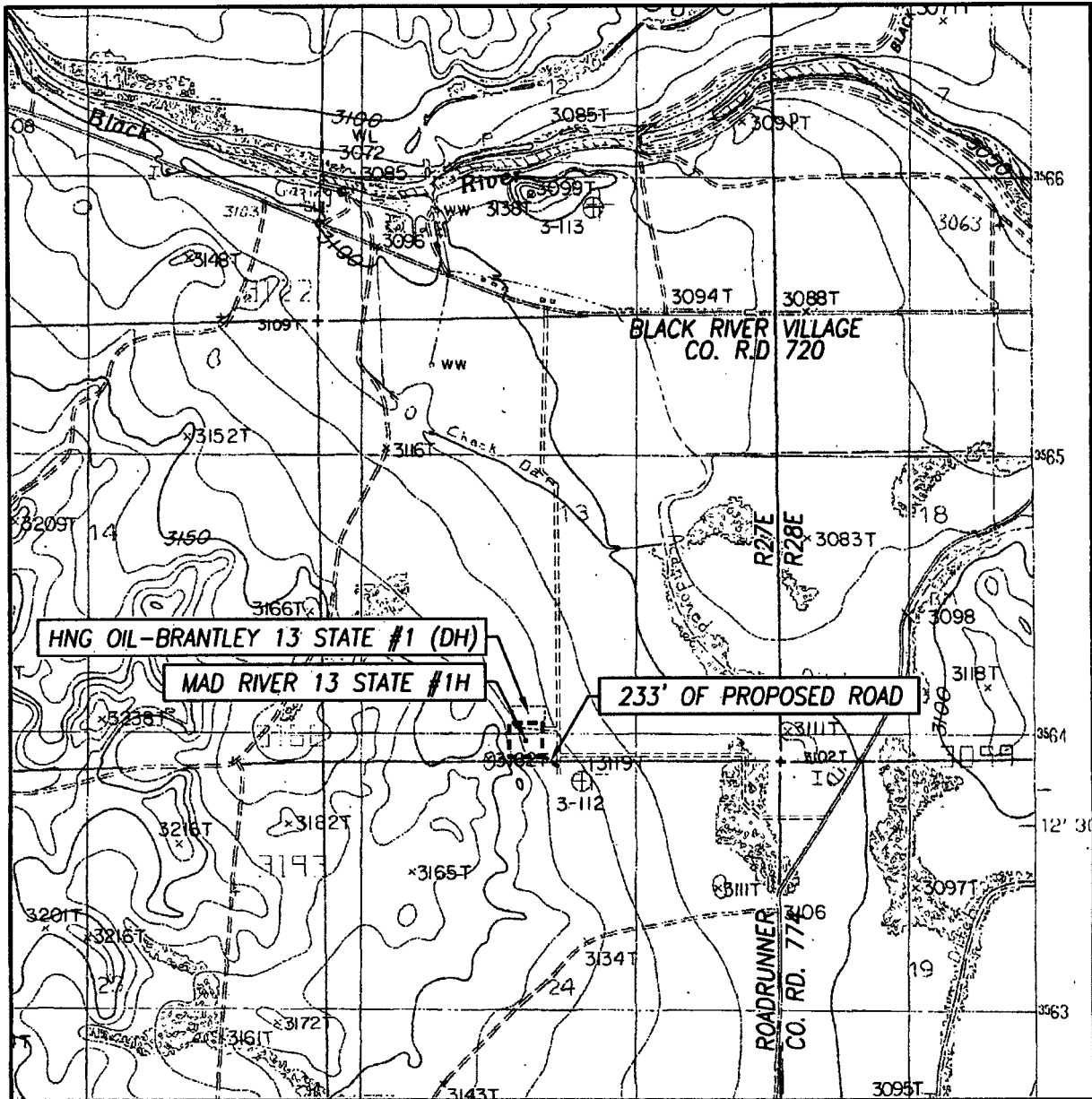
ELEVATION 3129'

OPERATOR CAZA OPERATING, LLC

LEASE MAD RIVER 13 STATE



LOCATION VERIFICATION MAP



SCALE: 1" = 2000'

CONTOUR INTERVAL:
BOND DRAW, N.M. - 10'

SEC. 13 TWP. 24-S RGE. 27-E

SURVEY _____ N.M.P.M.

COUNTY EDDY STATE NEW MEXICO

DESCRIPTION 330' FSL & 2310' FWL

ELEVATION 3129'

OPERATOR CAZA OPERATING, LLC

LEASE MAD RIVER 13 STATE

U.S.G.S. TOPOGRAPHIC MAP
BOND DRAW, N.M.

