

District I
1625 N. French Dr., Hobbs, NM 88240
Phone: (575) 393-6161 Fax: (575) 393-0720
District II
811 S. First St., Artesia, NM 88210
Phone: (575) 748-1283 Fax: (575) 748-9720
District III
1000 Rio Brazos Road, Aztec, NM 87410
Phone: (505) 334-6178 Fax: (505) 334-6170
District IV
1220 S. St. Francis Dr., Santa Fe, NM 87505
Phone: (505) 476-3460 Fax: (505) 476-3462

State of New Mexico
Energy, Minerals & Natural Resources Department
NM OIL CONSERVATION CONSERVATION DIVISION
ARTESIA DISTRICT
1220 South St. Francis Dr.
Santa Fe, NM 87505

Form C-102
Revised August 1, 2011
Submit one copy to appropriate
District Office

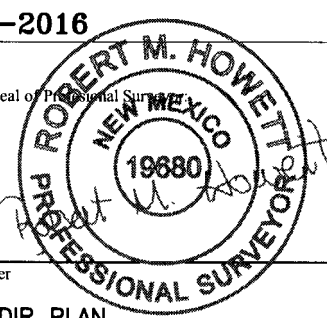
APR 12 2017

☒ AMENDED REPORT

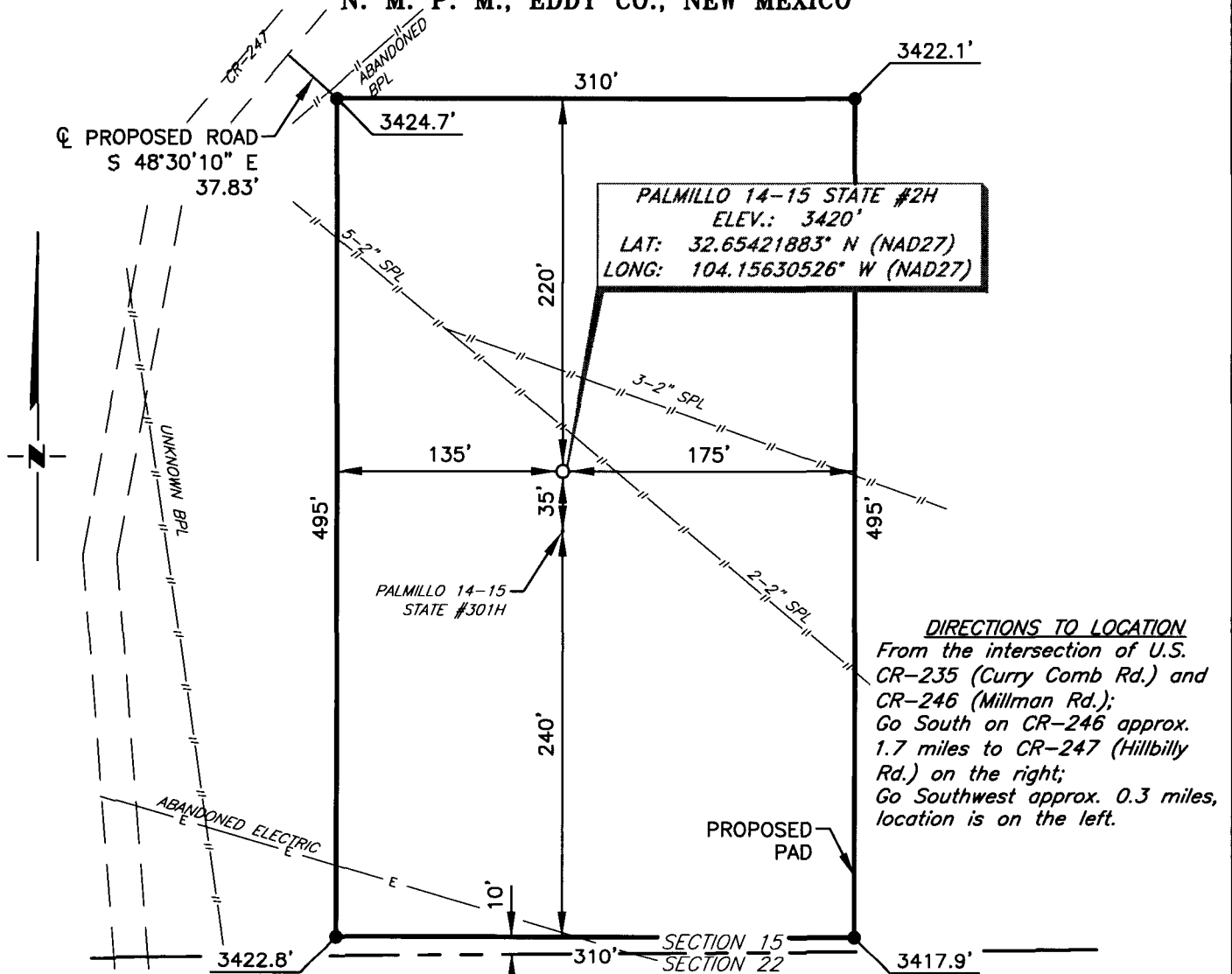
RECEIVED
WELL LOCATION AND ACREAGE DEDICATION PLAT

¹ API Number 30-015- 44043		² Pool Code 96413		³ Pool Name PALMILLO; BONESPRING, SW					
⁴ Property Code		⁵ Property Name PALMILLO 14-15 STATE						⁶ Well Number 2H	
⁷ OGRID NO. 873		⁸ Operator Name APACHE CORPORATION						⁹ Elevation 3420'	
¹⁰ Surface Location									
UL or lot no. P	Section 15	Township 19S	Range 28E	Lot Idn	Feet from the 285	North/South line SOUTH	Feet From the 315	East/West line EAST	County EDDY
¹¹ Bottom Hole Location If Different From Surface									
UL or lot no. P	Section 14	Township 19S	Range 28E	Lot Idn	Feet from the 430	North/South line SOUTH	Feet from the 280	East/West line EAST	County EDDY
¹² Dedicated Acres 160		¹³ Joint or Infill		¹⁴ Consolidation Code		¹⁵ Order No.			

No allowable will be assigned to this completion until all interest have been consolidated or a non-standard unit has been approved by the division.

¹⁶ GEODETIC DATA NAD 27 GRID - NM EAST SURFACE LOCATION N: 601761.4 - E: 554484.6 LAT: 32.65421883° N LONG: 104.15630526° W FIRST TAKE POINT (F.T.P.) N: 601846.6 - E: 554899.7 LAT: 32.65445938° N LONG: 104.15495594° W LAST TAKE POINT (L.T.P.) N: 601846.3 - E: 559663.8 LAT: 32.65470220° N LONG: 104.13947611° W BOTTOM LOCATION N: 601946.7 - E: 559713.8 LAT: 32.65470294° N LONG: 104.13931370° W		CORNER DATA NAD 27 GRID - NM EAST A: FOUND BRASS CAP "1941" N: 601428.9 - E: 549605.0 B: FOUND BRASS CAP "1941" N: 604061.8 - E: 549614.0 C: FOUND BRASS CAP "1941" N: 606698.6 - E: 549623.9 D: FOUND BRASS CAP "1941" N: 606727.2 - E: 552217.4 E: FOUND BRASS CAP "1941" N: 606756.6 - E: 554810.5 F: FOUND BRASS CAP "1941" N: 606778.9 - E: 557407.3 G: FOUND BRASS CAP "1941" N: 606801.8 - E: 560004.8 H: FOUND BRASS CAP "1941" N: 604169.0 - E: 559998.8		CORNER DATA NAD 27 GRID - NM EAST I: FOUND BRASS CAP "1941" N: 601519.0 - E: 559992.8 J: FOUND BRASS CAP "1941" N: 601498.3 - E: 557396.3 K: FOUND BRASS CAP "1941" N: 601479.3 - E: 554798.9 L: FOUND BRASS CAP "1941" N: 601455.6 - E: 552204.4 1: CALCULATED POINT N: 601467.4 - E: 553501.6 2: CALCULATED POINT N: 602785.7 - E: 553504.7 3: CALCULATED POINT N: 602797.4 - E: 554801.8 4: CALCULATED POINT N: 602844.0 - E: 559995.8		17 OPERATOR CERTIFICATION I hereby certify that the information contained herein is true and complete to the best of my knowledge and belief, and that this organization either owns a working interest or unleased mineral interest in the land including the proposed bottom hole location or has a right to drill this well at this location pursuant to a contract with an owner of such a mineral or working interest, or to a voluntary pooling agreement or a compulsory pooling order heretofore entered by the division. Sorina L Flores 1/11/17 Signature SORINA L. FLORES Date Printed Name E-mail Address sorina.flores@apachecorp.com	
18 SURVEYOR CERTIFICATION I hereby certify that the well location shown on this plat was plotted from field notes of actual surveys made by me or under my supervision, and that the same is true and correct to the best of my belief. 11-30-2016 Date of Survey Signature and Seal of Professional Surveyor  19680 Certificate Number 1/10/16 DIR PLAN							

APACHE CORPORATION
PALMILLO 14-15 STATE #2H
(285' FSL & 315' FEL)
SECTION 15, T19S, R28E
N. M. P. M., EDDY CO., NEW MEXICO

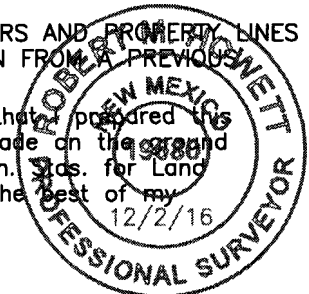


DIRECTIONS TO LOCATION
 From the intersection of U.S. CR-235 (Curry Comb Rd.) and CR-246 (Millman Rd.); Go South on CR-246 approx. 1.7 miles to CR-247 (Hillbilly Rd.) on the right; Go Southwest approx. 0.3 miles, location is on the left.

THIS IS NOT A BOUNDARY SURVEY, APPARENT PROPERTY CORNERS AND PROPERTY LINES ARE SHOWN FOR INFORMATION ONLY. BOUNDARY DATA IS SHOWN FROM A PREVIOUS SURVEY REFERENCED HEREON.

I, R. M. Howett, a N. M. Professional Surveyor, hereby certify that, prepared this unclassified survey of a well location from an actual survey made on the ground under my direct supervision, said survey and plat meet the Min. Stds. for Land Surveying in the State of N. M. and are true and correct to the best of my knowledge and belief.

Robert M. Howett
 Robert M. Howett NM PS 19680



SCALE: 1" = 100'

0 50 100

BEARINGS ARE
 NAD 27 GRID - NM EAST
 DISTANCES ARE
 GROUND.

Firm No.: TX 10193838 NM 4655451

Copyright 2016 - All Rights Reserved

RRC

NO. REVISION DATE

JOB NO.: LS1611379

DWG. NO.: 1611379PAD

308 W. BROADWAY ST., HOBBS, NM 88240 (575) 964-8200

SCALE: 1" = 1000'

DATE: 11-30-2016

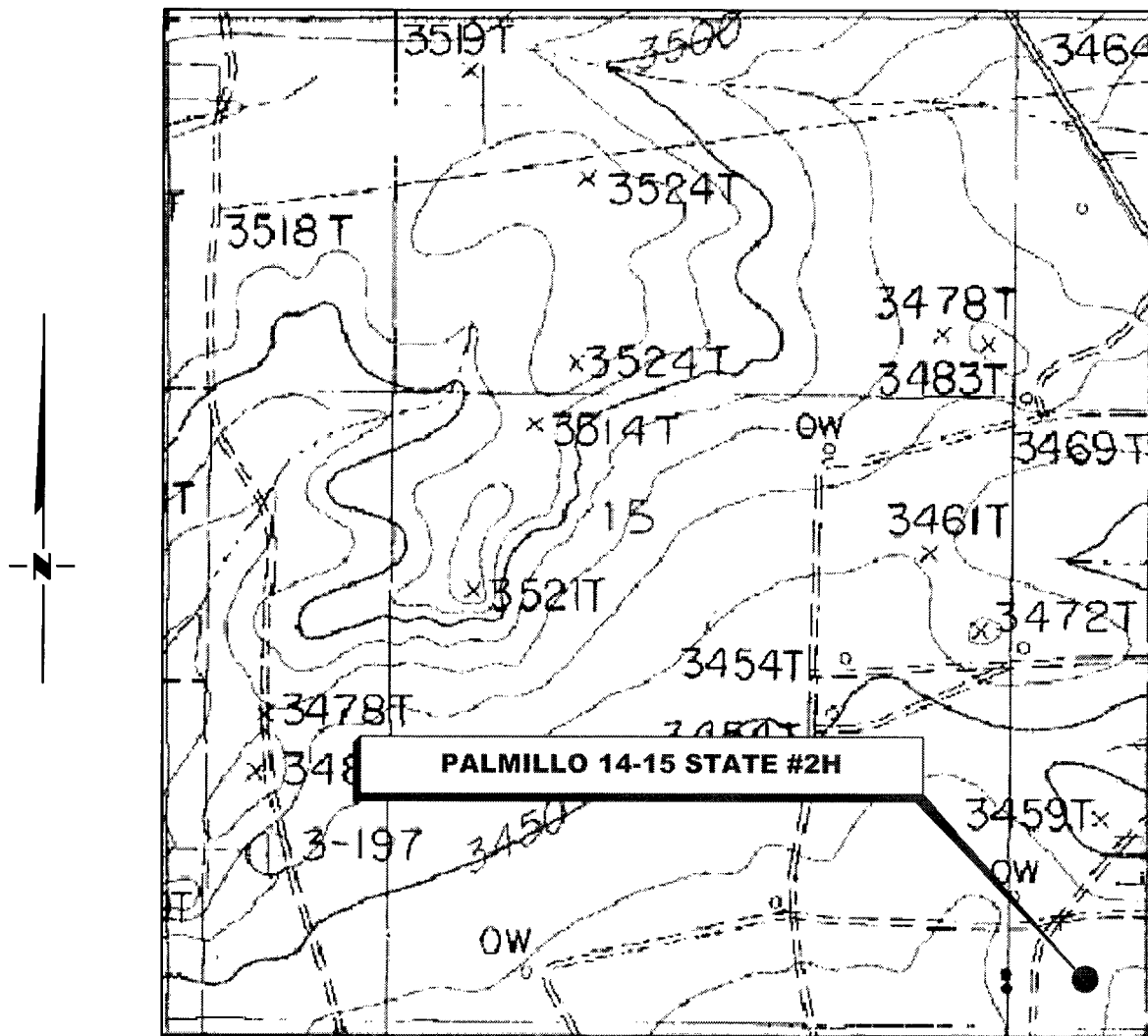
SURVEYED BY: JM/HD

DRAWN BY: CMJ

APPROVED BY: RMH

SHEET: 1 OF 1

LOCATION VERIFICATION MAP



**SECTION 15, TWP. 19 SOUTH, RGE. 28 EAST,
N. M. P. M., EDDY COUNTY, NEW MEXICO**

OPERATOR: Apache Corporation

LEASE: Palmillo 14-15 State

WELL NO.: 2H

ELEVATION: 3420'

LOCATION: 285' FSL & 315' FEL

CONTOUR INTERVAL: 10'

USGS TOPO. SOURCE MAP:

Illinois Camp, NM (P. E. 1985)

Firm No.: TX 10193838 NM 4655451

Copyright 2016 - All Rights Reserved

RRC

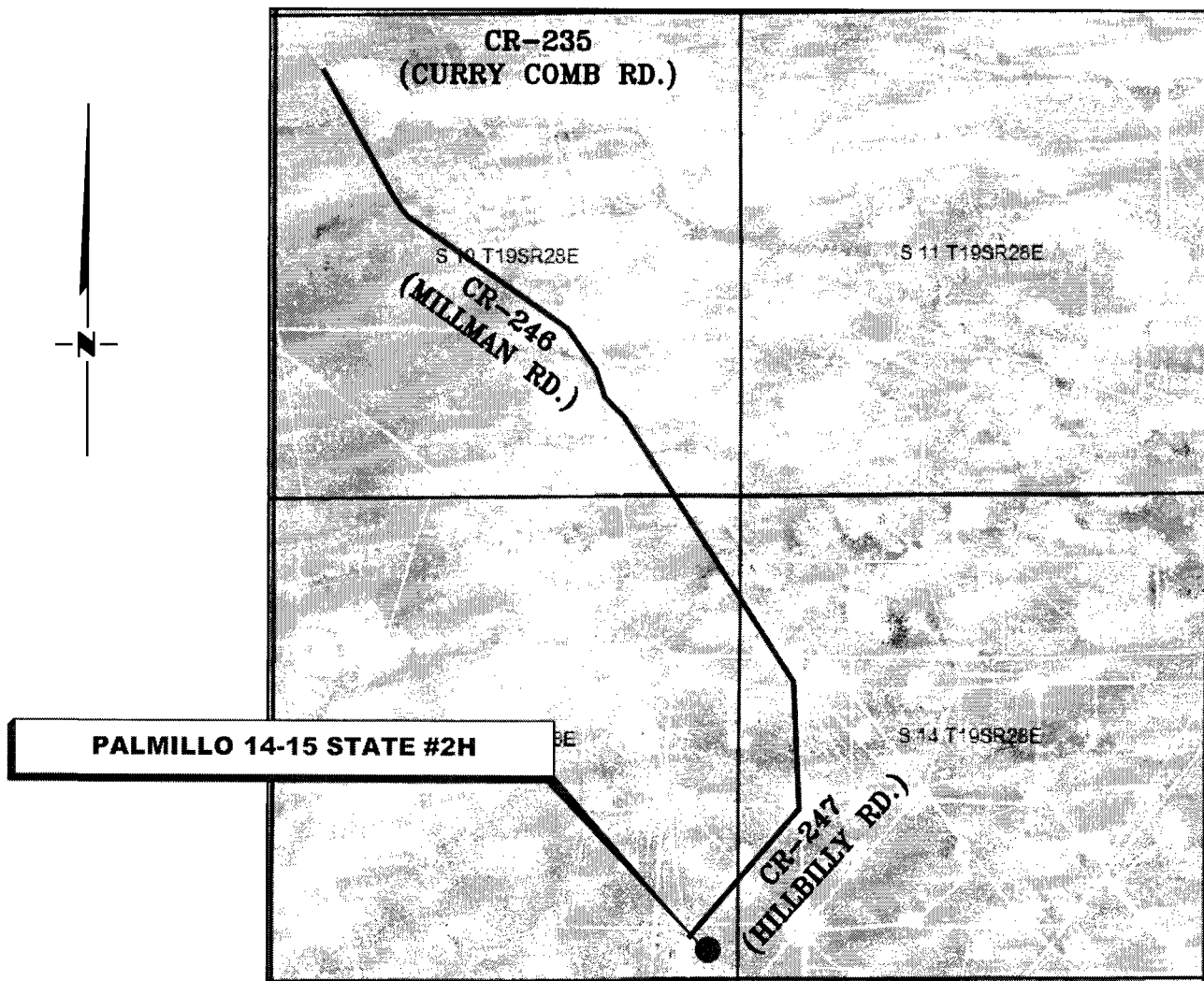
NO.	REVISION	DATE
JOB NO.: LS1611379		
DWG. NO.: 1611379LVM		

308 W. BROADWAY ST., HOBBS, NM 88240 (575) 964-8200

SCALE: 1" = 1000'
DATE: 11-30-2016
SURVEYED BY: JM/HD
DRAWN BY: CMJ
APPROVED BY: RMH
SHEET: 1 OF 1

VICINITY MAP

NOT TO SCALE



**SECTION 15, TWP. 19 SOUTH, RGE. 28 EAST,
N. M. P. M., EDDY COUNTY, NEW MEXICO**

OPERATOR: Apache Corporation
LEASE: Palmillo 14-15 State
WELL NO.: 2H

LOCATION: 285' FSL & 315' FEL
ELEVATION: 3420'

Firm No.: TX 10193838 NM 4655451

Copyright 2016 - All Rights Reserved

RRC

NO.	REVISION	DATE
JOB NO.:	LS1611379	
DWG. NO.:	1611379VM	

308 W. BROADWAY ST., HOBBS, NM 88240 (575) 964-8200

SCALE: 1" = 1000'
DATE: 11-30-2016
SURVEYED BY: JM/HD
DRAWN BY: CMJ
APPROVED BY: RMH
SHEET: 1 OF 1