

District I
1625 N. French Dr., Hobbs, NM 88240
Phone: (575) 393-6161 Fax: (575) 393-0720
District II
811 S. First St., Artesia, NM 88210
Phone: (575) 748-1283 Fax: (575) 748-9720
District III
1000 Rio Brazos Road, Aztec, NM 87410
Phone: (505) 334-6178 Fax: (505) 334-6170
District IV
1220 S. St. Francis Dr., Santa Fe, NM 87505
Phone: (505) 476-3460 Fax: (505) 476-3462

State of New Mexico
Energy, Minerals & Natural Resources Department
OIL CONSERVATION DIVISION
1220 South St. Francis Dr.
Santa Fe, NM 87505

Form C-102
Revised August 1, 2011
Submit one copy to appropriate
District Office

☒ AMENDED REPORT

WELL LOCATION AND ACREAGE DEDICATION PLAT

¹ API Number 30-015- 44045		² Pool Code 96413	³ Pool Name PALMILLO; BONESPRING, SW
⁴ Property Code 317303	⁵ Property Name PALMILLO 14-15 STATE		⁶ Well Number 3H
⁷ GRID NO. 873	⁸ Operator Name APACHE CORPORATION		⁹ Elevation 3462'

¹⁰ Surface Location

UL or lot no.	Section	Township	Range	Lot Idn	Feet from the	North/South line	Feet From the	East/West line	County
H	15	19S	28E		1600	NORTH	450	EAST	EDDY

¹¹ Bottom Hole Location If Different From Surface

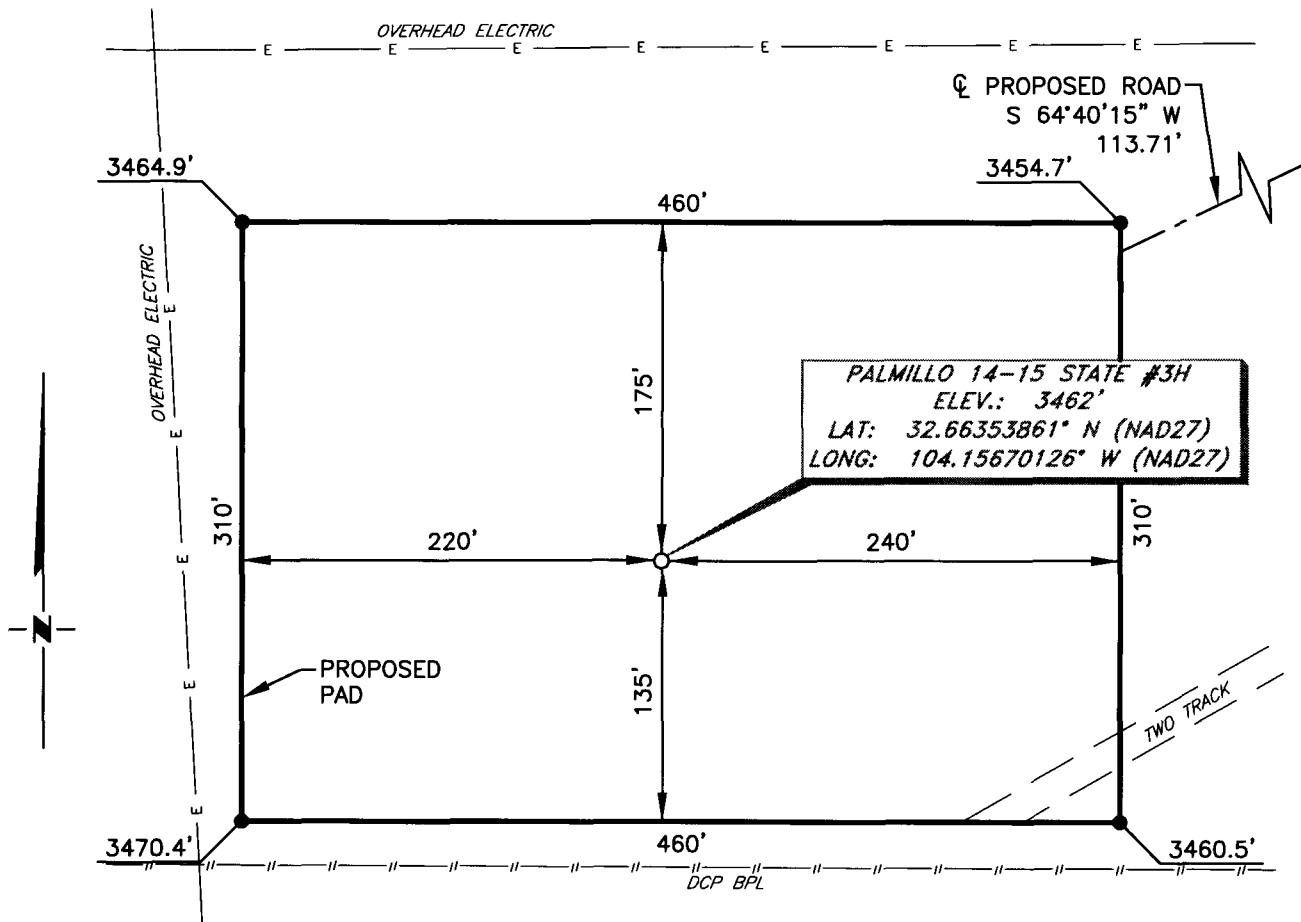
UL or lot no.	Section	Township	Range	Lot Idn	Feet from the	North/South line	Feet from the	East/West line	County
H	14	19S	28E		1650	NORTH	280	EAST	EDDY

¹² Dedicated Acres 160	¹³ Joint or Infill	¹⁴ Consolidation Code	¹⁵ Order No.
--------------------------------------	-------------------------------	----------------------------------	-------------------------

No allowable will be assigned to this completion until all interest have been consolidated or a non-standard unit has been approved by the division.

¹⁶ GEODETIC DATA NAD 27 GRID - NM EAST SURFACE LOCATION N: 605151.7 - E: 554357.1 LAT: 32.66353861° N LONG: 104.15670126° W FIRST TAKE POINT (F.T.P.) N: 605111.0 - E: 554906.9 LAT: 32.66342405° N LONG: 104.15491483° W LAST TAKE POINT (L.T.P.) N: 605149.3 - E: 559671.1 LAT: 32.66350656° N LONG: 104.13943340° W BOTTOM LOCATION N: 605149.8 - E: 559721.1 LAT: 32.66350757° N LONG: 104.13927096° W		CORNER DATA NAD 27 GRID - NM EAST A: FOUND BRASS CAP "1941" N: 601428.9 - E: 549605.0 B: FOUND BRASS CAP "1941" N: 604061.8 - E: 549614.0 C: FOUND BRASS CAP "1941" N: 606698.6 - E: 549623.9 D: FOUND BRASS CAP "1941" N: 606727.2 - E: 552217.4 E: FOUND BRASS CAP "1941" N: 606756.6 - E: 554810.5 F: FOUND BRASS CAP "1941" N: 606778.9 - E: 557407.3 G: FOUND BRASS CAP "1941" N: 606801.8 - E: 560004.8 H: FOUND BRASS CAP "1941" N: 604169.0 - E: 559998.8		CORNER DATA NAD 27 GRID - NM EAST I: FOUND BRASS CAP "1941" N: 601519.0 - E: 559992.8 J: FOUND BRASS CAP "1941" N: 601498.3 - E: 557396.3 K: FOUND BRASS CAP "1941" N: 601479.3 - E: 554798.9 L: FOUND BRASS CAP "1941" N: 601455.6 - E: 552204.4 1: CALCULATED POINT N: 604103.9 - E: 553507.8 2: CALCULATED POINT N: 605422.9 - E: 553510.9 3: CALCULATED POINT N: 605437.2 - E: 554807.6 4: CALCULATED POINT N: 605485.4 - E: 560001.8 5: CALCULATED POINT N: 604117.9 - E: 554804.7		¹⁷ OPERATOR CERTIFICATION I hereby certify that the information contained herein is true and complete to the best of my knowledge and belief, and that this organization either owns a working interest or unleased mineral interest in the land including the proposed bottom hole location or has a right to drill this well at this location pursuant to a contract with an owner of such a mineral or working interest, or to a voluntary pooling agreement or a compulsory pooling order heretofore entered by the division. Sorina L Flores 1/13/2017 Signature Date SORINA L. FLORES Printed Name sorina.flores@apachecorp.com E-mail Address
				¹⁸ SURVEYOR CERTIFICATION I hereby certify that the well location shown on this plat was plotted from field notes of actual surveys made by me or under my supervision, and that the same is true and correct to the best of my belief. 11-29-2016 Date of Survey Signature and Seal of Professional Surveyor 19680 Certificate Number 1/10/16 DIR PLAN		

APACHE CORPORATION
PALMILLO 14-15 STATE #3H
(1600' FNL & 450' FEL)
SECTION 15, T19S, R28E
N. M. P. M., EDDY CO., NEW MEXICO



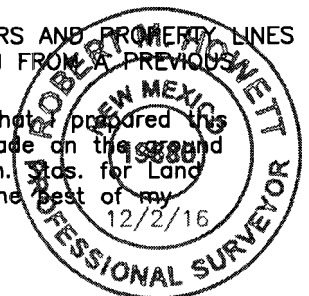
DIRECTIONS TO LOCATION

*From the intersection of U.S. CR-235 (Curry Comb Rd.) and CR-246 (Millman Rd.);
 Go South on CR-246 approx. 1.4 miles to a lease road on the right;
 Turn right and go West to the existing Millman Unit #199 well pad;
 Go to Northwest corner of existing pad to a proposed road;
 Go Southwest on proposed road approx. 350 feet to location.*

THIS IS NOT A BOUNDARY SURVEY, APPARENT PROPERTY CORNERS AND PROPERTY LINES ARE SHOWN FOR INFORMATION ONLY. BOUNDARY DATA IS SHOWN FROM A PREVIOUS SURVEY REFERENCED HEREON.

I, R. M. Howett, a N. M. Professional Surveyor, hereby certify that I prepared this unclassified survey of a well location from an actual survey made on the ground under my direct supervision, said survey and plat meet the Min. Stds. for Land Surveying in the State of N. M. and are true and correct to the best of my knowledge and belief.

Robert M. Howett
 Robert M. Howett NM PS 19680



SCALE: 1" = 100'
 0 50 100
 BEARINGS ARE
 NAD 27 GRID - NM EAST
 DISTANCES ARE
 GROUND.

Firm No.: TX 10193838 NM 4655451

Copyright 2016 - All Rights Reserved

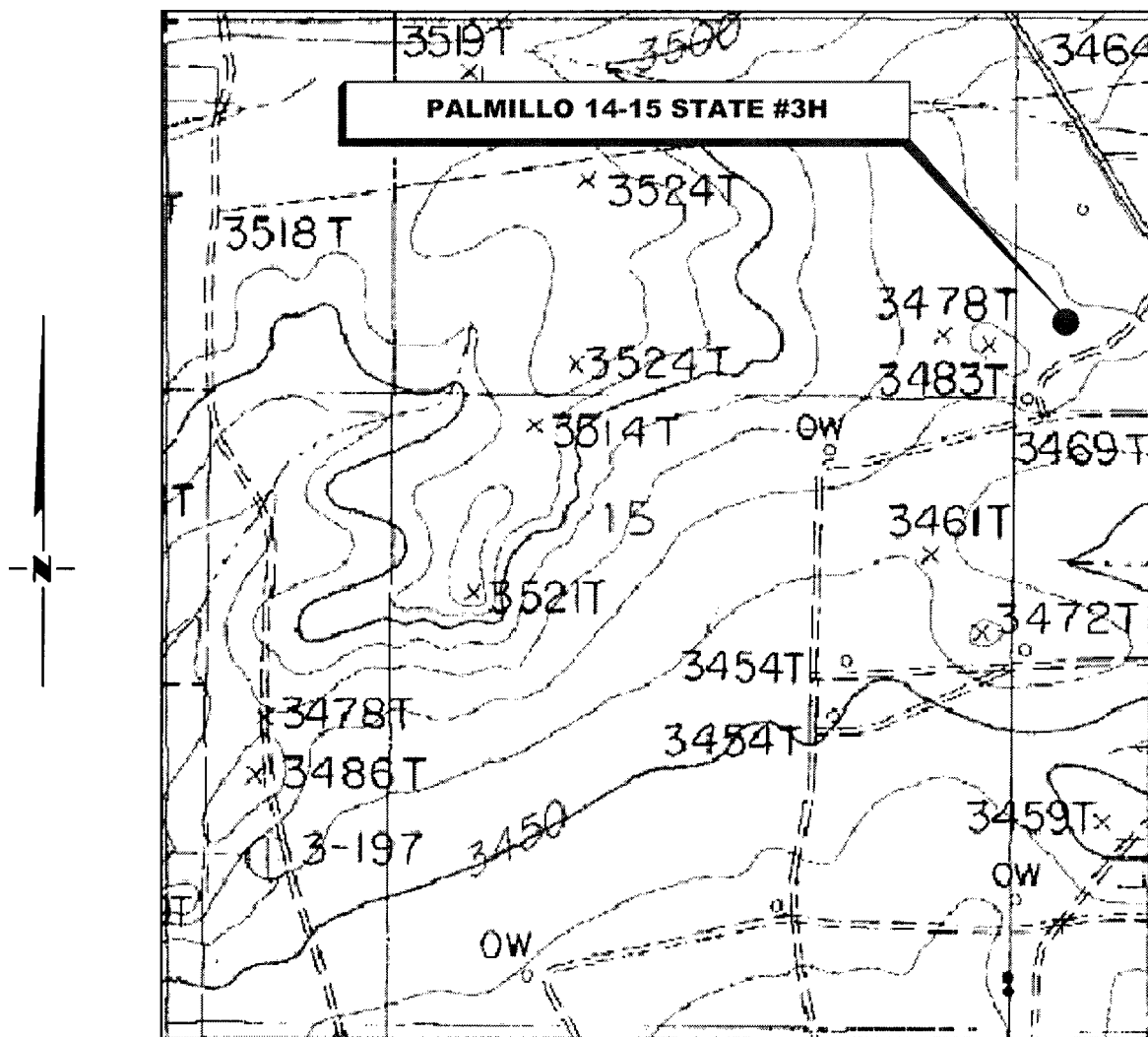
NO.	REVISION	DATE
JOB NO.:	LS1611381	
DWG. NO.:	1611381PAD	

RRC

308 W. BROADWAY ST., HOBBS, NM 88240 (575) 964-8200

SCALE: 1" = 1000'
DATE: 11-29-2016
SURVEYED BY: JM/HD
DRAWN BY: CMJ
APPROVED BY: RMH
SHEET: 1 OF 1

LOCATION VERIFICATION MAP



**SECTION 15, TWP. 19 SOUTH, RGE. 28 EAST,
N. M. P. M., EDDY COUNTY, NEW MEXICO**

OPERATOR: Apache Corporation
LEASE: Palmillo 14-15 State
WELL NO.: 3H
ELEVATION: 3462'

LOCATION: 1600' FNL & 450 FEL
CONTOUR INTERVAL: 10'
USGS TOPO. SOURCE MAP:
Illinois Camp, NM (P. E. 1985)

Firm No.: TX 10193838 NM 4655451

Copyright 2016 - All Rights Reserved

RRC

NO.	REVISION	DATE

JOB NO.: LS1611381

DWG. NO.: 1611381LVM

308 W. BROADWAY ST., HOBBS, NM 88240 (575) 964-8200

SCALE: 1" = 1000'

DATE: 11-30-2016

SURVEYED BY: JM/HD

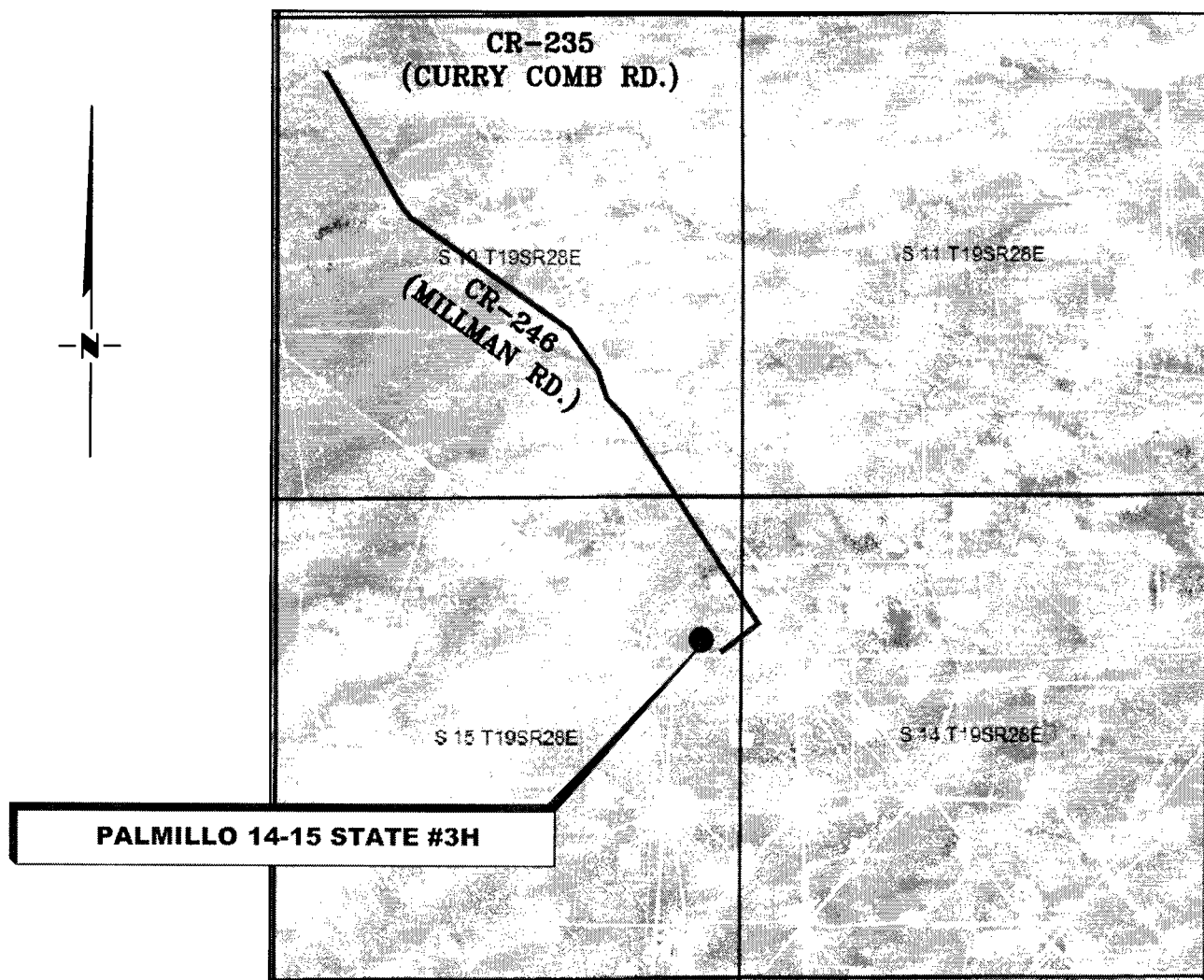
DRAWN BY: CMJ

APPROVED BY: RMH

SHEET: 1 OF 1

VICINITY MAP

NOT TO SCALE



PALMILLO 14-15 STATE #3H

**SECTION 15, TWP. 19 SOUTH, RGE. 28 EAST,
N. M. P. M., EDDY COUNTY, NEW MEXICO**

OPERATOR: Apache Corporation

LOCATION: 1600' FNL & 450' FEL

LEASE: Palmillo 14-15 State

ELEVATION: 3462'

WELL NO.: 3H

Firm No.: TX 10193838 NM 4655451

Copyright 2016 - All Rights Reserved

RRC

NO.	REVISION	DATE
JOB NO.: LS1611381		
DWG. NO.: 1611381VM		

308 W. BROADWAY ST., HOBBS, NM 88240 (575) 964-8200

SCALE: 1" = 1000'
DATE: 11-30-2016
SURVEYED BY: JM/HD
DRAWN BY: CMJ
APPROVED BY: RMH
SHEET: 1 OF 1

N. M. P. M., EDDY CO., NEW MEXICO



N. T. S.

STATE OF
NEW MEXICO

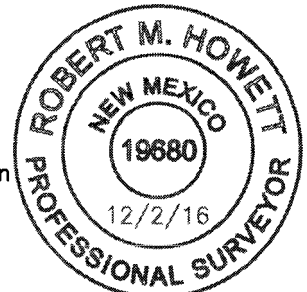
0 500' 1000'

LEGEND

Firm No.: TX 10193838 NM 4655451

Robert M. Howett

Robert M. Howett NM PS 19680



Copyright 2016 – All Rights Reserved

NO.	REVISION	DATE
JOB NO.: LS1611381		
DWG. NO.: 1611381RD1		

RRC

308 W. BROADWAY ST., HOBBS, NM 88240 (575) 964-8200

SCALE: 1" = 1000'
DATE: 11-30-2016
SURVEYED BY: JM/HD
DRAWN BY: CMJ
APPROVED BY: RMH
SHEET: 1 OF 2

APACHE CORPORATION
PROPOSED ACCESS ROAD FROM THE MILLMAN UNIT #199
TO THE PALMILLO 14-15 STATE #3H
SECTION 15, T19S, R28E
N. M. P. M., EDDY CO., NEW MEXICO

DESCRIPTION

A strip of land 20 feet wide, being 113.71 feet or 6.892 rods in length, lying in Section 15, Township 19 South, Range 28 East, N. M. P. M., Eddy County, New Mexico, being 10 feet left and 10 feet right of the following described survey of a centerline across State of New Mexico land:

BEGINNING at Engr. Sta. 0+00, a point in Northeast quarter of Section 15, which bears, S 04°31'45" W, 1,401.23 feet from a brass cap, stamped "1941", found for the Northeast corner of Section 15;

Thence S 64°40'15" W, 113.71 feet, to Engr. Sta. 1+13.71, the End of Survey, a point in Northeast quarter of Section 15, which bears, S 59°14'59" E, 2,769.75 feet from a brass cap, stamped "1941", found for the North quarter corner of Section 15.

Said strip of land contains 0.052 acres, more or less, and is allocated by forties as follows:

SE 1/4 NE 1/4	6.892 Rods	0.052 Acres
---------------	------------	-------------

Firm No.: TX 10193838 NM 4655451

Copyright 2016 - All Rights Reserved

NO.	REVISION	DATE
JOB NO.: LS1611381		
DWG. NO.: 1611381RD2		

RRC

308 W. BROADWAY ST., HOBBS, NM 88240 (575) 964-8200

SCALE: 1" = 1000'
DATE: 11-30-2016
SURVEYED BY: JM/HD
DRAWN BY: CMJ
APPROVED BY: RMH
SHEET: 2 OF 2