

UNITED STATES  
DEPARTMENT OF THE INTERIOR  
BUREAU OF LAND MANAGEMENTNMOCD  
ArtesiaFORM APPROVED  
OMB NO. 1004-0137  
Expires: January 31, 2018**SUNDRY NOTICES AND REPORTS ON WELLS**  
*Do not use this form for proposals to drill or to re-enter an abandoned well. Use form 3160-3 (APD) for such proposals.*5. Lease Serial No.  
NMNM11592

6. If Indian, Allottee or Tribe Name

7. If Unit or CA/Agreement, Name and/or No.

8. Well Name and No.  
GRYNBERG FEDERAL 19. API Well No.  
30-005-61275-00-S110. Field and Pool or Exploratory Area  
PECOS SLOPE-ABO11. County or Parish, State  
CHAVES COUNTY, NM**SUBMIT IN TRIPLICATE - Other instructions on page 2**

1. Type of Well

☐ Oil Well ☒ Gas Well ☐ Other2. Name of Operator  
JACK GRYNBERG & ASSOCIATES

Contact: RANDY EDELEN

E-Mail: r.edelen@grynberg.com

3a. Address  
3600 S. YOSEMITE SUITE 900  
DENVER, CO 802373b. Phone No. (include area code)  
Ph: 303-850-7490  
Fx: 303-850-7498

4. Location of Well (Footage, Sec., T., R., M., or Survey Description)

Sec 29 T5S R24E SWNE 1980FNL 1980FEL

**12. CHECK THE APPROPRIATE BOX(ES) TO INDICATE NATURE OF NOTICE, REPORT, OR OTHER DATA**

## TYPE OF SUBMISSION

- ☒
- Notice of Intent
- 
- ☐
- Subsequent Report
- 
- ☐
- Final Abandonment Notice

## TYPE OF ACTION

- |   |   |  |   |
|---|---|--|---|
| <input type="checkbox"/> Acidize              | <input type="checkbox"/> Deepen               | <input type="checkbox"/> Production (Start/Resume) | <input type="checkbox"/> Water Shut-Off |
| <input type="checkbox"/> Alter Casing         | <input type="checkbox"/> Hydraulic Fracturing | <input type="checkbox"/> Reclamation               | <input type="checkbox"/> Well Integrity |
| <input type="checkbox"/> Casing Repair        | <input type="checkbox"/> New Construction     | <input checked="" type="checkbox"/> Recomplete     | <input type="checkbox"/> Other          |
| <input type="checkbox"/> Change Plans         | <input type="checkbox"/> Plug and Abandon     | <input type="checkbox"/> Temporarily Abandon       |   |
| <input type="checkbox"/> Convert to Injection | <input type="checkbox"/> Plug Back            | <input type="checkbox"/> Water Disposal            |   |

13. Describe Proposed or Completed Operation: Clearly state all pertinent details, including estimated starting date of any proposed work and approximate duration thereof. If the proposal is to deepen directionally or recompletable horizontally, give subsurface locations and measured and true vertical depths of all pertinent markers and zones. Attach the Bond under which the work will be performed or provide the Bond No. on file with BLM/BIA. Required subsequent reports must be filed within 30 days following completion of the involved operations. If the operation results in a multiple completion or recompletable in a new interval, a Form 3160-4 must be filed once testing has been completed. Final Abandonment Notices must be filed only after all requirements, including reclamation, have been completed and the operator has determined that the site is ready for final inspection.

Request Permission to recompletable well as follows:

Estimated start date May 8, 2017

We anticipate approximately 10 days to complete this work.

Procedure:

Notify NMOCD and BLM Rep.

Clean off and blade location and road.

Blade with minimal disturbance to allow access and safe working area.

Set and test anchors.

MIRU completion rig.

Bleed pressure off well.

Remove tree and install BOPE. Test to 3,000PSI.

**Accepted For Record Only! Approval Subject  
To Putting Well On Continuous Production  
And Keeping Well On Continuous Production  
Or Plugging Well With An Approved Plugging  
Program!**NMOCD CONSERVATION  
ARTESIA DISTRICT

14. I hereby certify that the foregoing is true and correct.

Electronic Submission #371019 verified by the BLM Well Information System

For JACK GRYNBERG &amp; ASSOCIATES, sent to the Roswell

Committed to AFMSS for processing by DAVID GLASS on 03/24/2017 (17DRG0123SE)

Name (Printed/Typed) RICHARD MILLER

Title DRILLING MANAGER

Signature (Electronic Submission)

Date 03/24/2017

**THIS SPACE FOR FEDERAL OR STATE OFFICE USE****ACCEPTED FOR RECORD****(ORIG. SCD.) DAVID R. GLASS**

Approved By

Title

Date

Conditions of approval, if any, are attached. Approval of this notice does not warrant or certify that the applicant holds legal or equitable title to those rights in the subject lease which would entitle the applicant to conduct operations thereon.

Office

Title 18 U.S.C. Section 1001 and Title 43 U.S.C. Section 1212, make it a crime for any person knowingly and willfully to make to any department or agency of the United States any false, fictitious, or fraudulent statements or presentations as to any matter within its jurisdiction.

(Instructions on page 2)

**\*\* BLM REVISED \*\* BLM REVISED \*\* BLM REVISED \*\* BLM REVISED \*\* BLM REVISED \*\*****ACCEPTED FOR 3 MONTH PERIOD 4-12-17**  
**ENDING JUN 24 2017**  
**RUP**

## **Additional data for EC transaction #371019 that would not fit on the form**

### **32. Additional remarks, continued**

Function BOP and hold safety meeting regarding BOP drill and pressure control.  
Pull and stand back 3,565 feet of 2 3/8 inch tbg. Inspect condition of tbg and replace as needed.  
Run in bit and casing scraper on tbg to ~4,141 feet PBTD.  
Run CBL, GR, CCL. Assume TOC will be approx. 901 feet for planning.  
Propose to shoot new perms

Attempt to flow well up 4 1/2 inch casing.  
Run 2 3/8 inch Tbg and pkr to 3,852.  
Acidize (1st) with 5,000 gallons 12% HCl+3% Hydrofluoric, 1,600cuft N2/bbl 2665 gal KCl, 5000 gal 12% & 3%, 1300 gal KCL.  
Reverse out, swab and attempt to flow well. Hook to sales line.

**Grynberg Federal #1, Sec 29 5S 24E, Chaves Cnty NM, API# 30-005-61275****Request Permission to recomplate and possibly abandon well as follows:****Status:**

Drilled 14 3/4" hole to 901'. Set 904' of 10 3/4" 32.75# casing. Cmt with 600sx.

Drilled 7 7/8" hole to ~4180'. Set 4177' of 4 1/2" 10.5# casing. Top of cement unknown. (Cemented with 1900sx, assume TOC at 901' per Sdy of 1/4/82 for planning purposes, will run CBL)

2 3/8" tubing at 3565'.

Existing Perforations: 3615'-3826'.

**Procedure:**

Notify NMOCD and BLM Rep.

Clean off and blade location and road.

Blade with minimal disturbance to allow access and safe working area.

Set and test anchors.

MIRU completion rig.

Bleed pressure off well.

Remove tree and install BOPE. Test to 3000PSI.

Function BOP and hold safety meeting regarding BOP drill and pressure control.

Pull and stand back 3565' of 2 3/8" tbg. Inspect condition of tbg and replace as needed.

Run in bit and casing scraper on tbg to ~4141 PBD'.

Run CBL, GR, CCL. Assume TOC will be approx. 901' for planning.

Propose to shoot new perfs at:

New 2017 Perfs	
3858-64	6
3870-74	4
3884-3904	10
3933-53	10
3962-75	13
3980-4000	20
4008-16	8
4026-34	8
4038-48	10
4052-98	46
	135 Ft. - 2spf

Attempt to flow well up 4 1/2" casing.

Run 2 3/8" Tbg and pkr to 3852.

Acidize (1<sup>st</sup>) with 5000 gallons 12% HCl+3% Hydrofluoric, 1600cuft N2/bbl ...665 gal KCl,,5000 gal 12% & 3%,,1300 gal KCL.

Reverse out, swab and attempt to flow well. Hook to sales line.

If no flow and recompletion was not successful, Pull 2 3/8" tbg.

### **REQUEST PERMISSION TO ABANDON WELL AS FOLLOWS**

Set CIBP at 3595' (25' above top perf.) on Wireline.

#### **Plug #1: 25 sxs from 3595' to 3261'**

Notify BLM Rep 48 hours prior to MIT. TIH tubing to 3595' and set a 25 sxs Class B cement plug on top CIBP inside casing from 3595' to 3261' to isolate perforations and to cover Abo top at 3615'. (25 sx in casing covers 25 x 1.2 / .0896 cuft/ft = 334 feet)

PUH to 2000'; WOC 4 hours and TIH to tag TOC at 3495' or higher. Pressure test casing MIT to 500 PSI for 30 minutes with BLM Rep on location.

Above TOC, spot approximately 16 bbl (3261-2250=1011'x.0159 b/f=16 bbls) gel mud (25 sxs/100 bbl.) up to 2250' inside casing. TOH with tubing. Lay down all but 2250'.

#### **Plug #2: 25 sxs from 2250' to 2150', assume CBL shows TOC at 901'.**

Set cement 100' plug inside 4 1/2" casing with 25 sxs Class B cement from 2250'- up to 2150'.

Then TOH with tubing to 1000' and WOC 4 hours. TIH to tag TOC at 2150' or higher.

Above TOC, spot approximately 20 bbl (2150-901=1249'x.0159 b/f=19.8 bbls) gel mud (25 sxs/100 bbl.) up to 951'. TOH with tubing. Lay down all but 851'.

#### **Plug #3: 70 sxs from 951' to 851'. Depending on TOC from CBL, assuming TOC is below 951'.**

Rig up wireline and perforate 4 holes at 951' (50' below 10 3/4" casing shoe). TIH with tubing to 951' and set 100' plug inside and outside with 70 sxs Class B cement from 951' up to 851'.

Then TOH with tubing laying down all but 851'. WOC 4 hours and TIH to tag TOC; must tag at 851' or higher.

Above TOC, spot approximately 13 bbl (851-60=794'x.0159 b/f=12.6 bbls) gel mud (25 sxs/100 bbl.) up to 60'. TOH laying down tubing.

#### **Plug #4: top out 60' to fill 4-1/2" casing and 200' in the 4-1/2" x 10 3/4" annulus**

TIH with tubing to 60' and fill 4-1/2" casing to surface. TOH & LD.

Run in 1" pipe as far as possible to 200' in the 4-1/2" x 10 3/4" annulus and pump cement to fill to surface.

Cut off casing and wellhead below GL and install dry hole marker.

Check 10 3/4" casing x 14 3/4" open hole annulus. Run 1" to 200' and fill with cmt if needed.

RDMO service rig. Submit completion forms to BLM.

Prepared by: Richard Miller, [r.miller@grynberg](mailto:r.miller@grynberg), 303-881-5440

# Grynberg Petroleum Company

## Grynberg Federal #1, sec 29

33.8452759, -104.4438171 NAD83

Current Schematic and Recompletion Plan, P&A Plan in RED, Revised 3/23/2017

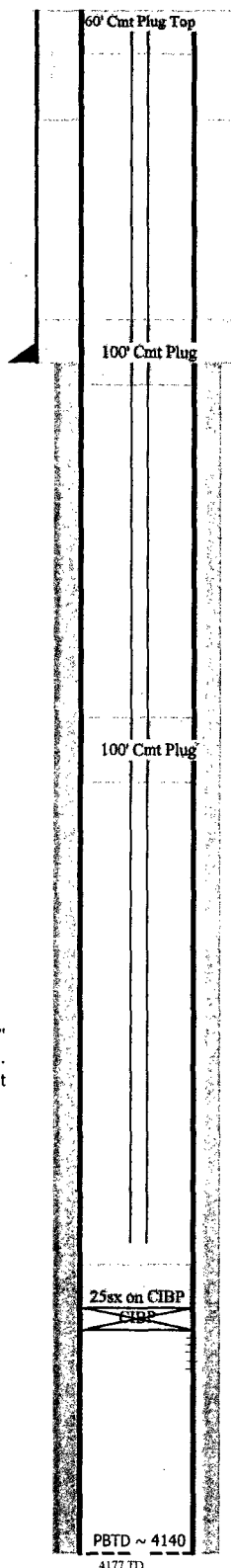
Sec 29, 5S, 24E  
1980FNL 1980FEL  
Chavez Cnty, NM  
API 30-005-61275

901' of 14 3/4" hole, 10 3/4" 32# casing  
Cmt'd w/ 600'sx

Sundry of 1/4/82 says TOC 901'.  
Will run CBL to confirm.

4 1/2" 10.5# Casing in 7 7/8" hole set at 4177'  
Cmt'd with 1900 sx. 50/50 poz, no CBL ran.  
alc TOC-1900sx1.5=2850/.2278cuft/ft=12,511' of cmt height  
Sundry of 1/4/82 says TOC 901'.

Richard Miller, Drlg Mgr.  
303-881-5440  
r.miller@grynberg.com



Install Dry Hole Marker

PLUG #4 - 60' on top inside 4 1/2" csg.  
top out betw 10 3/4" & 4 1/2" with 200' of 1".  
Check 10 3/4" x 14 3/4" annulus,  
Top out using of 200' of 1" if not full.

GL: 4111'  
Spud Date: 12/12/81

PLUG #3 -100' Cmt Plug Inside and Outside 4 1/2"  
25sx from 951'-851', will run CBL  
WOC 4 hrs and tag.  
Perf 4 1/2" and fill 50' inside 10 3/4" x 4 1/2" annulus i

### Proposed Abandonment Plan in RED

PLUG #2 -100' + Cmt Plug Inside 4 1/2" csg  
25sx from 2250'-2150' thru perfs.  
WOC 4 hrs and tag.

TOC UNKNOWN, no CBL ran  
Assume TOC is 901' per Sdy of 1/4/82 for planning  
Will run CBL and adjust plan as needed

Abo 3615-3826

Remove 3565' of 2 3/8" Tbg.

PLUG #1 -25 sx of cmt on top of CIBP at 3595'  
WOC 4 hrs and tag.  
P&A with CIBP at 3595'. 25' above top perf

Orig Perfs -  
3615-3617  
3627-3731  
3634-3642  
3656-3670  
3760-3768  
3790-3802  
3813-3823

New 2017 Perfs		
3858-64	6	
3870-74	4	
3884-3904	10	
3933-53	10	
3962-75	13	
3980-4000	20	
4008-16	8	
4026-34	8	
4038-48	10	
4052-98	46	
		135 Ft. - 2spf

Not to Scale