

District I
1625 N. French Dr., Hobbs, NM 88240
Phone: (575) 393-6161 Fax: (575) 393-9720
District II
411 S. First St., Artesia, NM 88210
Phone: (575) 748-1283 Fax: (575) 748-9720
District III
1000 Rio Bonito Road, Aztec, NM 87410
Phone: (505) 334-6178 Fax: (505) 334-6170
District IV
1220 S. St. Francis Dr., Santa Fe, NM 87505
Phone: (505) 476-3460 Fax: (505) 476-3462

State of New Mexico
Energy, Minerals & Natural Resources Department
OIL CONSERVATION DIVISION
1220 South St. Francis Dr.
Santa Fe, NM 87505

Form C-102
Revised August 1, 2011
Submit one copy to appropriate
District Office

☒ AMENDED REPORT
(As-Drilled)

WELL LOCATION AND ACREAGE DEDICATION PLAT

| | | |
|-----------------------------------|---|---|
| API Number 30-015-44016 | Pool Code 96473 | Pool Name Pierce Crossing Bone Spring, East |
| Property Code 304790 | Property Name CEDAR CANYON "28" FEDERAL | Well Number 9H |
| OGRID No. 16696 | Operator Name OXY USA INC. | Elevation 2948.0' |

Surface Location

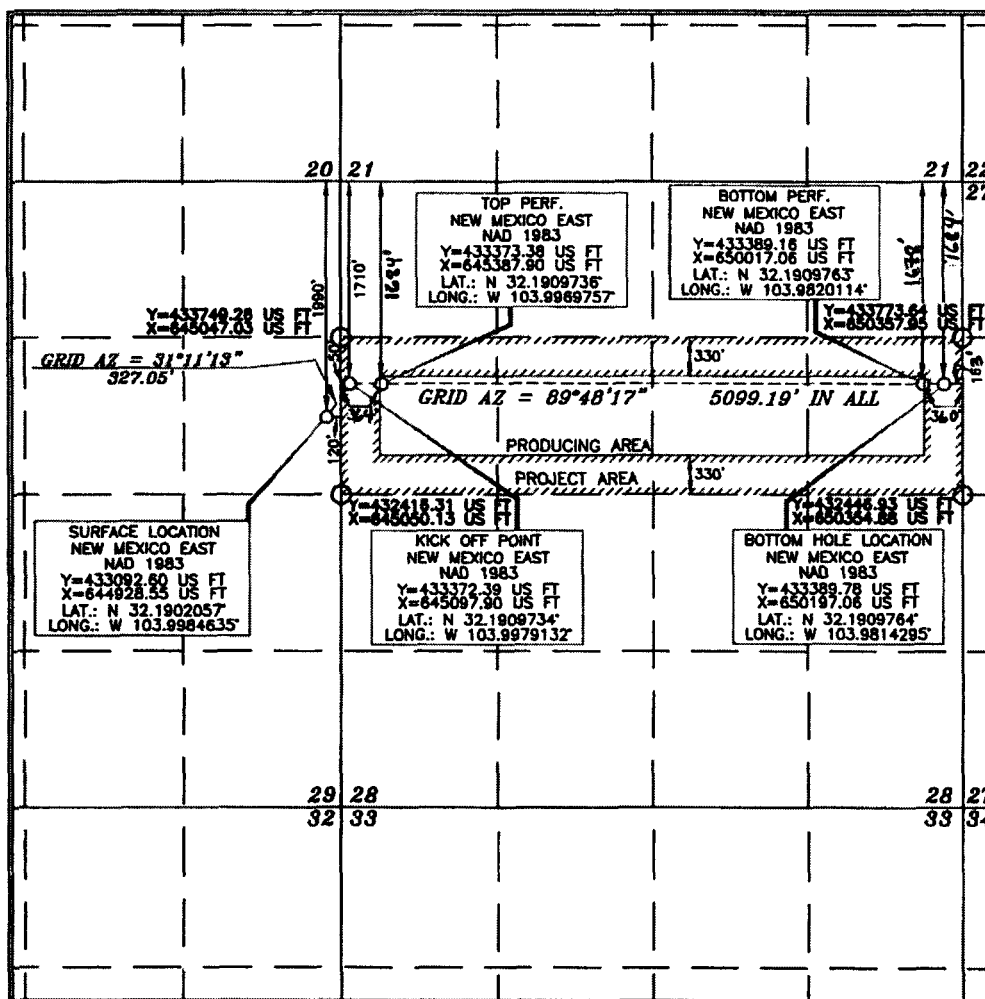
| UL or lot no. | Section | Township | Range | Lot Idn | Feet from the | North/South line | Feet from the | East/West line | County |
|---------------|-----------|-----------------|--------------------------|---------|---------------|------------------|---------------|----------------|-------------|
| H | 29 | 24 SOUTH | 29 EAST, N.M.P.M. | | 1990' | NORTH | 120' | EAST | EDDY |

Bottom Hole Location If Different From Surface

| UL or lot no. | Section | Township | Range | Lot Idn | Feet from the | North/South line | Feet from the | East/West line | County |
|---------------|-----------|-----------------|--------------------------|---------|------------------------------|------------------|----------------------------|----------------|-------------|
| H | 28 | 24 SOUTH | 29 EAST, N.M.P.M. | | 1710' 1684' | NORTH | 160' 163' | EAST | EDDY |

| | | | |
|-------------------------------|-----------------------------|--------------------|---|
| Dedicated Acres 160 | Joint or Infill 4 | Consolidation Code | Order No. BP - 1678 FNL 360 FEL TP - 1684 FNL 364 FWL |
|-------------------------------|-----------------------------|--------------------|---|

No allowable will be assigned to this completion until all interests have been consolidated or a non-standard unit has been approved by the division.



OPERATOR CERTIFICATION

I hereby certify that the information contained herein is true and complete to the best of my knowledge and belief, and that this organization either owns a working interest or undivided mineral interest in the land including the proposed bottom hole location or has a right to drill this well at this location pursuant to a contract with an owner of such a mineral or working interest, or to a voluntary pooling agreement or a compulsory pooling order heretofore approved by the division.

Signature: *[Signature]* Date: **4/13/17**
Printed Name: **Jana Mendiola**
Email Address: **janalyn-mendiola@oxy.com**

SURVEYOR CERTIFICATION

I hereby certify that the well location shown on this plat was placed from valid and proper surveys made by me or under my supervision, and that the same is true and correct to the best of my belief.

Date of Survey: **JULY 14, 2016**
Signature and Seal of Professional Surveyor: *[Signature]*
Certificate Number: **15079**

WO# 160714WL-b-XY (Rev. A) (KA)