

DISTRICT I
1625 N. French Dr., Hobbs, NM 88240
Phone: (575) 393-6161 Fax: (575) 393-0720
DISTRICT II
811 S. First St., Artesia, NM 88210
Phone: (575) 748-1283 Fax: (575) 748-9720
DISTRICT III
1000 Rio Brazos Rd., Aztec, NM 87410
Phone: (505) 334-6178 Fax: (505) 334-6170
DISTRICT IV
1220 S. St. Francis Dr., Santa Fe, NM 87505
Phone: (505) 476-3460 Fax: (505) 476-3462

NM OIL CONSERVATION

State of New Mexico
Energy, Minerals & Natural Resources Department
OIL CONSERVATION DIVISION
1220 South St. Francis Dr.
Santa Fe, New Mexico 87505

Form C-102

Revised August 1, 2011

Submit one copy to appropriate
District Office

☒ AMENDED REPORT

APR 25 2017

RECEIVED

WELL LOCATION AND ACREAGE DEDICATION PLAT

API Number 30-015-43314	Pool Code 98220	Pool Name PURPLE SAGE - WOLFCAMP GAS POOL
Property Code	Property Name LONGVIEW FEDERAL 31	Well Number 5H
OGRID No. 246289	Operator Name RKI EXPLORATION & PRODUCTION	Elevation 3096.6

Surface Location

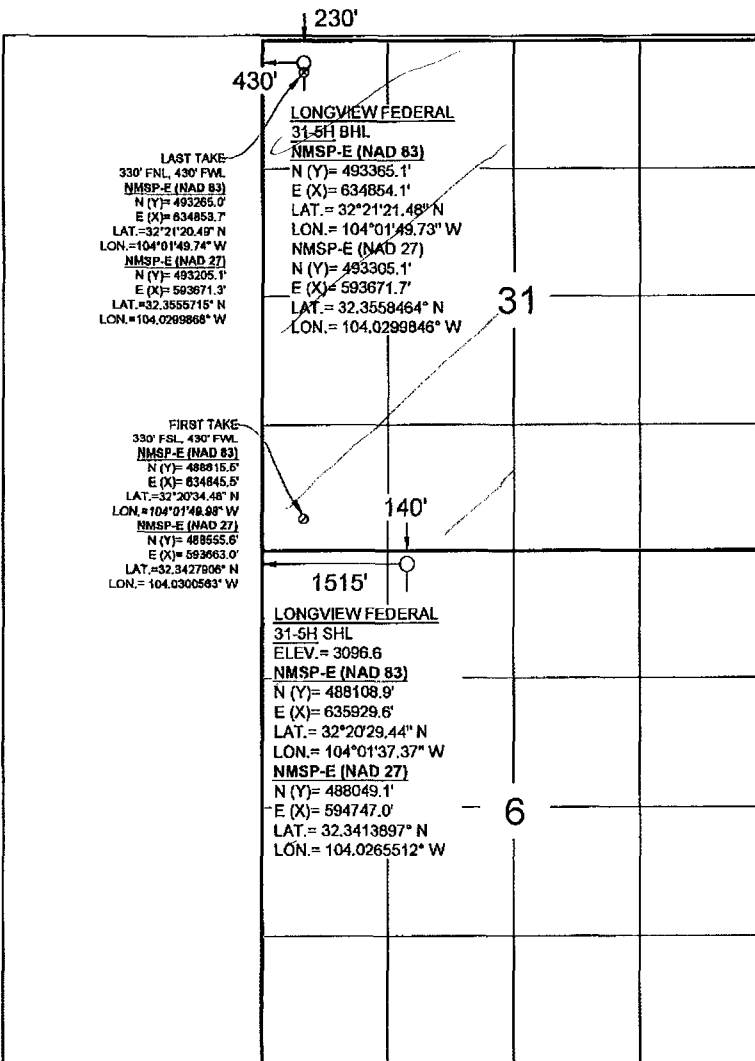
UL or lot no.	Section	Township	Range	Lot Idn	Feet from the	North/South line	Feet from the	East/West line	County
C	6	23 S	29 E		140	NORTH	1515	WEST	EDDY

Bottom Hole Location If Different From Surface

UL or lot no.	Section	Township	Range	Lot Idn	Feet from the	North/South line	Feet from the	East/West line	County
D	31	22 S	29 E		230	NORTH	430	WEST	EDDY

Dedicated Acres 310.2	Joint or Infill	Consolidated Code	Order No.
--------------------------	-----------------	-------------------	-----------

No allowable will be assigned to this completion until all interests have been consolidated or a non-standard unit has been approved by the division.



OPERATOR CERTIFICATION

I hereby certify that the information contained herein is true and complete to the best of my knowledge and belief, and that this organization either owns a working interest or unleased mineral interest in the land including the proposed bottom hole location or has a right to drill this well at this location pursuant to a contract with an owner of such a mineral or working interest, or to voluntary pooling agreement or a compulsory pooling order heretofore entered by the division.

Signature: Jessica Delance
Date: 4/14/17
Print Name: Jessica Delance
E-mail Address: Jessica.Delance@npceenergy.com

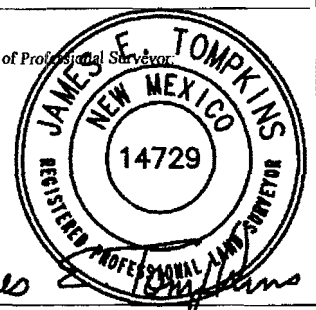
SURVEYORS CERTIFICATION

I hereby certify that the well location shown on this plat was plotted from field notes of actual surveys made by me or under my supervision, and that the same is true and correct to the best of my belief.

APRIL 11, 2017

Date of Survey

Signature and Seal of Professional Surveyor



Job No.: WTC51791
JAMES E. TOMPKINS 14729
Certificate Number