

District I
1625 N. French Dr., Hobbs, NM 88240
Phone: (575) 393-6161 Fax: (575) 393-0720
District II
811 S. First St., Artesia, NM 88210
Phone: (505) 748-1283 Fax: (505) 748-9720
District III
1000 Rio Brazos Road, Aztec, NM 87410
Phone: (505) 334-6178 Fax: (505) 334-6170
District IV
1220 S. St. Francis Dr., Santa Fe, NM 87505
Phone: (505) 476-3460 Fax: (505) 476-3462

State of New Mexico
Energy, Minerals & Natural Resources Department
OIL CONSERVATION DIVISION
1220 South St. Francis Dr.
Santa Fe, NM 87505

Form C-102
Revised August 1, 2011
Submit one copy to appropriate
District Office
☒ AMENDED REPORT

JUN 09 2017

WELL LOCATION AND ACREAGE DEDICATION RECEIVED

¹ API Number 30-015-41380	² Pool Code 98199	³ Pool Name Parkway; Bone Spring, West
⁴ Property Code 38568	⁵ Property Name ONYX PWU "29"	
⁷ OGRID No. 6137	⁸ Operator Name DEVON ENERGY PRODUCTION COMPANY, L.P.	⁶ Well Number 7H
		⁹ Elevation 3304.0

¹⁰ Surface Location

UL or lot no.	Section	Township	Range	Lot Idn	Feet from the	North/South line	Feet from the	East/West line	County
I	30	19 S	29 E		1800	SOUTH	175	EAST	EDDY

¹¹ Bottom Hole Location If Different From Surface

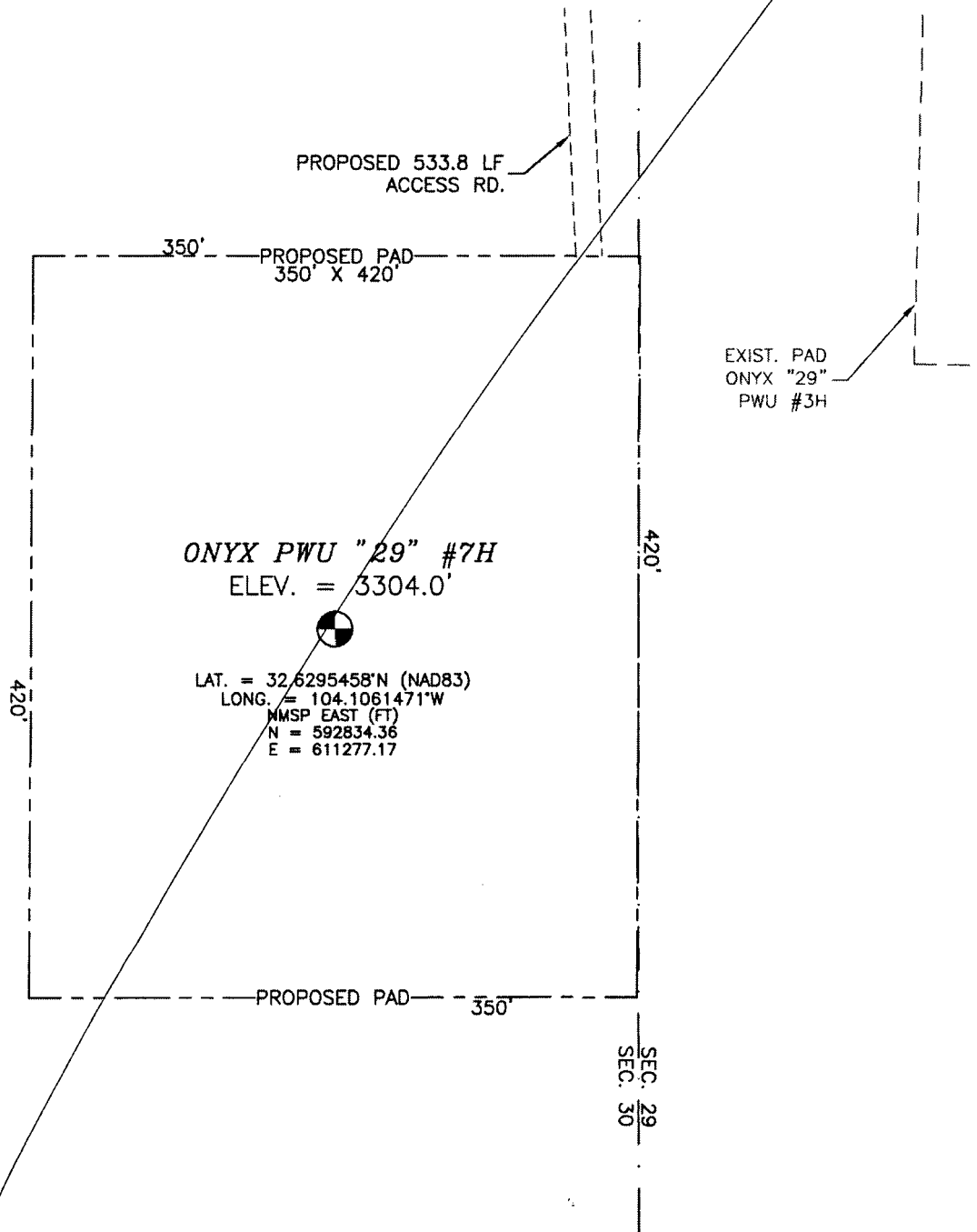
UL or lot no.	Section	Township	Range	Lot Idn	Feet from the	North/South line	Feet from the	East/West line	County
L	29	19 S	29 E		1958	SOUTH	325	WEST	EDDY

¹² Dedicated Acres 160	¹³ Joint or Infill	¹⁴ Consolidation Code	¹⁵ Order No.
---	-------------------------------	----------------------------------	-------------------------

No allowable will be assigned to this completion until all interests have been consolidated or a non-standard unit has been approved by the division.

<p>17 OPERATOR CERTIFICATION I hereby certify that the information contained herein is true and complete to the best of my knowledge and belief, and that this organization either owns a working interest or unleased mineral interest in the land including the proposed bottom hole location or has a right to drill this well at this location pursuant to a contract with an owner of such a mineral or working interest, or to a voluntary pooling agreement or a compulsory pooling order heretofore entered by the division.</p> <p><i>Erin Workman</i> Signature 03/15/2017 Date</p> <p>Erin Workman Printed Name Erin.workman@dmv.com E-mail Address</p>		<p>18 SURVEYOR CERTIFICATION I hereby certify that the well location shown on this plat was plotted from field notes of actual surveys made by me or under my supervision, and that the same is true and correct to the best of my belief.</p> <p>JULY 9, 2012 Date of Survey</p> <p><i>[Signature]</i> Signature and Seal of Professional Surveyor Certificate Number 11001 F. JARAMILLO, PLS 12797 SURVEY NO. 951A</p>
--	--	---

SECTION 30, TOWNSHIP 19 SOUTH, RANGE 29 EAST, N.M.P.M.
EDDY COUNTY, STATE OF NEW MEXICO



010 50 100 200

SCALE 1" = 100'
DIRECTIONS TO LOCATION

FROM THE INTERSECTION OF CR 210 (OLD LOCO) AND CR 235
(CURRY COMB) GO NORTHWEST ON CR 235 FOR APPROX. 1.4 MILES.
GO SOUTH (YELLOW CATTLE GUARD) FOR APPROX. 1.8 MILES TO
ONYX #3H WELL. LOCATION IS APPROX. 250 FT WEST.

DEVON ENERGY PRODUCTION COMPANY, L.P.
ONYX PWU "29" #7H
LOCATED 1800 FT. FROM THE SOUTH LINE
AND 175 FT. FROM THE EAST LINE OF
SECTION 30, TOWNSHIP 19 SOUTH,
RANGE 29 EAST, N.M.P.M.
EDDY COUNTY, STATE OF NEW MEXICO

JULY 19, 2012

SURVEY NO. 951A

MADRON SURVEYING, INC. 301 SOUTH CANAL (575) 234-3341 CARLSBAD, NEW MEXICO