

District I - (575) 393-6161

1625 N. French Dr., Hobbs, NM 88241

District II - (575) 748-1283

811 S. First St., Artesia, NM 88210

District III - (505) 334-6178

1000 Rio Brazos Rd., Aztec, NM 87410

District IV - (505) 476-3460

1220 S. St. Francis Dr., Santa Fe, NM 87505

**NM OIL CONSERVATION**

**ARTESIA DISTRICT**

**OIL CONSERVATION DIVISION**

**JUN 09 2017**

1220 South St. Francis Dr.

Santa Fe, NM 87505

**RECEIVED**

WELL API NO.

30-015-26342

5. Indicate Type of Lease

STATE ☐ FEE ☒

6. State Oil & Gas Lease No.

7. Lease Name or Unit Agreement Name

Ceniza AGZ Com

8. Well Number

1

9. OGRID Number

025575

10. Pool name or Wildcat

North Dagger Draw Upper Penn

**SUNDRY NOTICES AND REPORTS ON WELLS**

(DO NOT USE THIS FORM FOR PROPOSALS TO DRILL OR TO DEEPEN OR PLUG BACK TO A DIFFERENT RESERVOIR. USE "APPLICATION FOR PERMIT" (FORM C-101) FOR SUCH PROPOSALS.)

1. Type of Well: Oil Well ☒ Gas Well ☐ Other

2. Name of Operator

EOG Y Resources, Inc.

3. Address of Operator

104 South Fourth Street, Artesia, NM 88210

4. Well Location

Unit Letter P : 660 feet from the South line and 660 feet from the East line

Section 2 Township 20S Range 24E NMPM Eddy County

11. Elevation (Show whether DR, RKB, RT, GR, etc.)

3608'GR

**12. Check Appropriate Box to Indicate Nature of Notice, Report or Other Data**

**NOTICE OF INTENTION TO:**

PERFORM REMEDIAL WORK ☐ PLUG AND ABANDON ☒  
TEMPORARILY ABANDON ☐ CHANGE PLANS ☐  
PULL OR ALTER CASING ☐ MULTIPLE COMPL ☐  
DOWNHOLE COMMINGLE ☐  
CLOSED-LOOP SYSTEM ☐  
OTHER: ☐

**SUBSEQUENT REPORT OF:**

REMEDIAL WORK ☐ ALTERING CASING ☐  
COMMENCE DRILLING OPNS. ☐ P AND A ☐  
CASING/CEMENT JOB ☐  
OTHER: ☐

13. Describe proposed or completed operations. (Clearly state all pertinent details, and give pertinent dates, including estimated date of starting any proposed work). SEE RULE 19.15.7.14 NMAC. For Multiple Completions: Attach wellbore diagram of proposed completion or recompletion.

**RESUBMIT**

EOG Y Resources, Inc. plans to plug and abandon this well as follows:

1. MIRU all safety equipment as needed. NU BOP. No casing recovery will be attempted as production casing is cemented to surface.
2. Set a 7" CIBP at 7540' with 25 sx Class "H" cement on top. *WOC & TAG*
3. Spot a 30 sx Class "C" cement plug from 5355'-5525', this will place a plug across stage tool and Wolfcamp top. WOC and tag, reset if necessary.
4. Spot a 30 sx Class "C" cement plug from 3254'-3424', this will place a plug across Bone Spring top.
5. The TOC should be near surface, but our CBL only goes to 5000'. So from here out we are going to perforate at each plug to ensure that cement is present behind casing.
6. Perforate 4 shots at 2150'. Pressure up on the casing to 500 psi. If we can pump into the perfs spot a 50 sx Class "C" cement plug inside and outside casing from 2000'-2150'. If the casing holds pressure, spot a 150' plug inside the casing from 2000'-2150'. WOC and tag, reset if necessary. This will place a plug across Glorieta top.
7. Perforate 4 shots at 1355'. Pressure up on casing to 500 psi. If we pump into the perfs spot a 50 sx Class "C" cement plug inside and outside casing from 1205'-1355'. If casing holds pressure, spot a 150' plug inside casing from 1205'-1355'. WOC and tag, reset if necessary. This will place a plug across surface casing shoe.
8. Perforate 4 shots at 150'. Pressure up on casing to 500 psi. If we can pump into the perfs spot a 50 sx Class "C" cement plug inside and outside casing from surface to 150'. If the casing holds pressure, spot a 150' plug inside casing from 0-150'. WOC and tag plug, reset if necessary. This will place a plug at surface.
9. Remove all surface equipment and weld dry hole marker per regulations.

Wellbore schematics attached

Spud Date:

Rig Release Date:

Approved for plugging of well bore entry. This well is under bond and is retained pending receipt of C-103 (Subsequent Report of Well Plugging) which may be found at OCD Web Page under Form: www.cmr.d.state.nm.us/oed.

**WELL MUST BE PLUGGED BY 6/12/18**

I hereby certify that the information above is true and complete to the best of my knowledge and belief.

SIGNATURE Tina Huerta TITLE Regulatory Specialist DATE June 6, 2017

Type or print name Tina Huerta E-mail address: tina\_huerta@eogresources.com PHONE: 575-748-4168

**For State Use Only**

APPROVED BY: Robert L. Byrd TITLE COMPLIANCE OFFICER DATE 6/12/2017

Conditions of Approval (if any): SEE ATTACHED COA-5

WELL NAME: Ceniza AGZ Com # 1 FIELD: Dagger Draw South

LOCATION: 660' FSL & 660' FEL of Section 2-20S-24E Eddy Co., NM

GL: 3,608' ZERO: 14' KB: 3,622'

SPUD DATE: 08/02/90 COMPLETION DATE: 10/03/90

COMMENTS: API No.: 30-015-26342

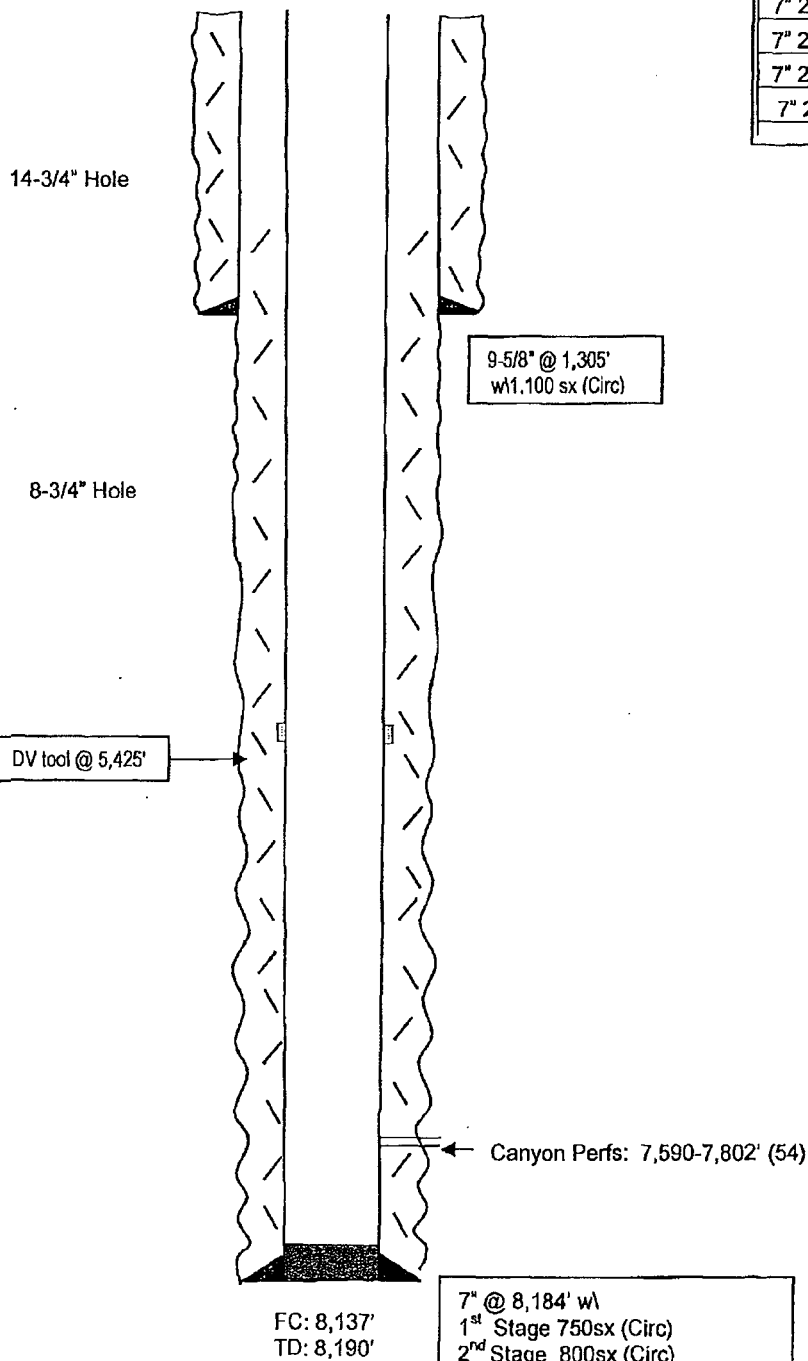
#### CASING PROGRAM

|                         |        |
|-------------------------|--------|
| 9-5/8" 36# J-55         | 1,305' |
| 7" 26# J-55 LT&C 4 jts  |        |
| 7" 23# N-80 LT&C 22 jts |        |
| 7" 23# J-55 LT&C 91 jts |        |
| 7" 26# J-55 LT&C 67 jts |        |
| 7" 26# N-80 LT&C 15 jts | 8,184' |

**Before**

#### TOPS

|          |        |
|----------|--------|
| SA       | 501'   |
| Glorieta | 2,100' |
| BS       | 3,324' |
| WC       | 5,423' |
| Canyon   | 7,540' |

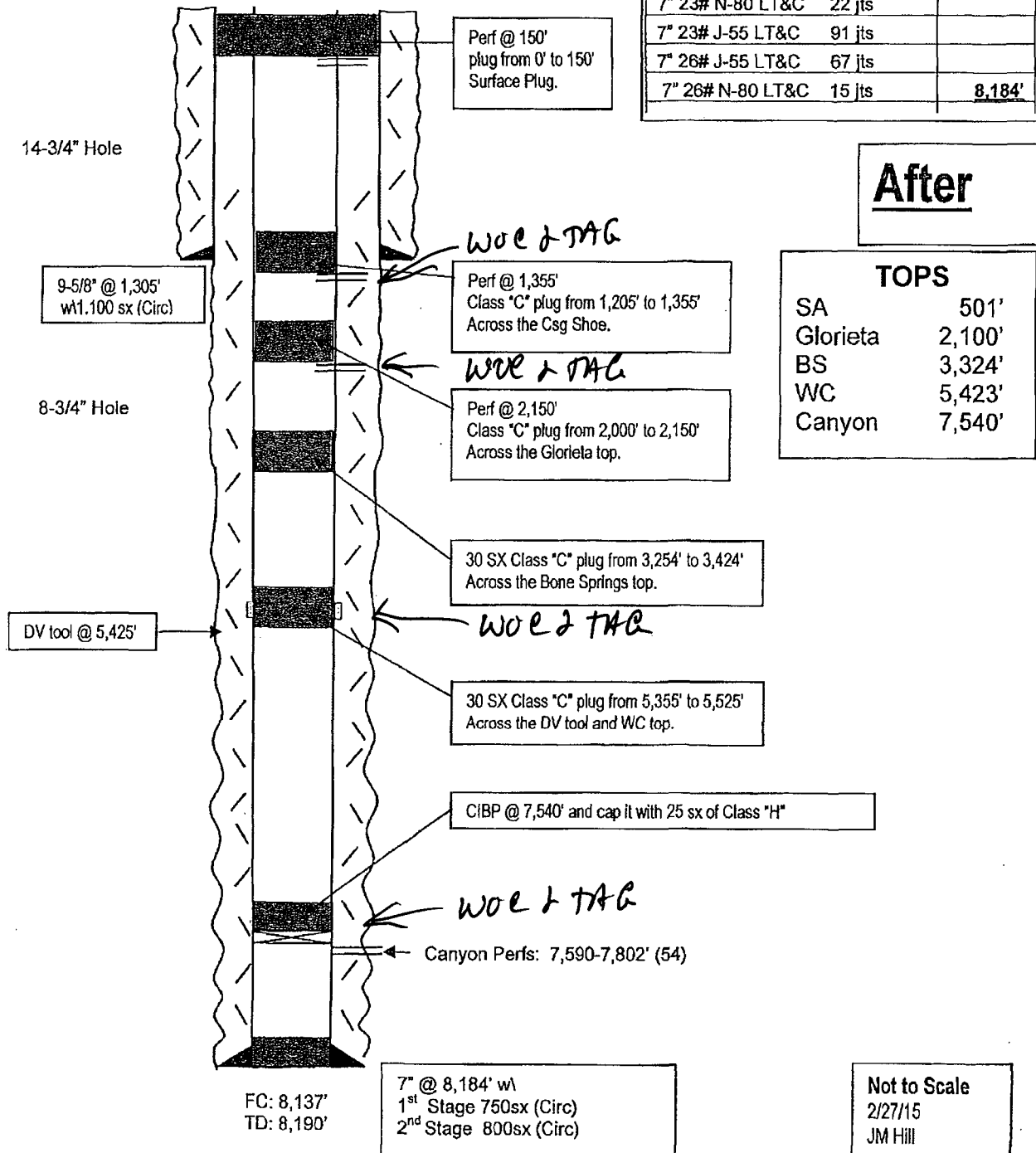


Not to Scale  
2/27/15  
JM Hill

WELL NAME: Ceniza AGZ Com # 1 FIELD: Dagger Draw South  
 LOCATION: 660' FSL & 660' FEL of Section 2-20S-24E Eddy Co., NM  
 GL: 3,608' ZERO: 14' KB: 3,622'  
 SPUD DATE: 08/02/90 COMPLETION DATE: 10/03/90  
 COMMENTS: API No.: 30-015-26342

# CASING PROGRAM

|                  |        |        |
|------------------|--------|--------|
| 9-5/8" 36# J-55  |        | 1,305' |
| 7" 26# J-55 LT&C | 4 jts  |        |
| 7" 23# N-80 LT&C | 22 jts |        |
| 7" 23# J-55 LT&C | 91 jts |        |
| 7" 26# J-55 LT&C | 67 jts |        |
| 7" 26# N-80 LT&C | 15 jts | 8,184' |



## CONDITIONS FOR PLUGGING AND ABANDONMENT

### District II / Artesia N.M.

The following is a guide or checklist in preparation of a plugging program, this is not all inclusive and care must be exercised in establishing special plugging programs in unique and unusual cases, **Notify NMOCD District Office II at (575)-748-1283 at least 24 hours before beginning work.**

1. A notice of intent to plug and abandon a wellbore is required to be approved before plugging operations are conducted. A cement evaluation tool is required in order to ensure isolation of producing formations, protection of water and correlative rights. A cement bond log or other accepted cement evaluation tool is to be provided to the division for evaluation if one has not been previously run or if the well did not have cement circulated to surface during the original casing cementing job or subsequent cementing jobs.
2. Closed loop system is to be used for entire plugging operation. Upon completion, contents of steel pits are to be hauled to a permitted disposal location.
3. Trucking companies being used to haul oilfield waste fluids to a disposal – commercial or private – shall have an approved NMOCD C-133 permit. A copy of this permit shall be available in each truck used to haul waste products. It is the responsibility of the operator as well as the contractor, to verify that this permit is in place prior to performing work. Drivers shall be able to produce a copy upon request of an NMOCD Field inspector.
4. Filing a subsequent C-103 will serve as notification that the well has been plugged.
5. A final C-103 shall be filed (and a site inspection by NMOCD Inspector to determine if the location is satisfactorily cleaned, all equipment, electric poles and trash has been removed to Meet NMOCD standards) before bonding can be released.
6. **Squeeze pressures are not to exceed 500 psi, unless approval is given by NMOCD.**
7. Produced water **will not** be used during any part of the plugging operation.
8. Mud laden fluids must be placed between all cement plugs mixed at 25 sacks per 100 bbls of water.
9. All cement plugs will be a minimum of 100' in length or a minimum of 25 sacks of cement, whichever is greater. 50' of calculated cement excess required for inside casing plugs and 100% calculated cement excess required on outside casing plugs.
10. **Class 'C' cement will be used above 7500 feet.**
11. **Class 'H' cement will be used below 7500 feet.**
12. **A cement plug is required to be set 50' above and 50' below, casing stubs, DV tools, attempted casing cut offs, cement tops outside casing, salt sections and anywhere the casing is perforated, these plugs require a 4 hour WOC and then will be tagged**
13. **All Casing Shoes Will Be Perforated 50' below shoe depth and Attempted to be Squeezed, cement needs to be 50' above and 50' Below Casing Shoe inside the Production Casing**
14. When setting the top out cement plug in production, intermediate and surface casing, wellbores should remain full at least 30 minutes after plugs are set
15. **A CIBP is to be set within 100' of production perforations, capped with 100' of cement, WOC 4 hours and tag.**

16. A CIBP with 35' of cement may be used in lieu of the 100' plug if set with a bailer. This plug will be placed within 100' of the top perforation, **(WOC 4 hrs and tag)**.
17. No more than **3000'** is allowed between cement plugs in cased hole and **2000'** in open hole.
18. Some of the Formations to be isolated with cement plugs are: These plugs to be set to isolate formation tops
  - A) Fusselman
  - B) Devonian
  - C) Morrow
  - D) Wolfcamp
  - E) Bone Springs
  - F) Delaware
  - G) Any salt sections
  - H) Abo
  - I) Glorieta
  - J) Yates.
  - K) **Potash---** (In the R-111-P Area (Potash Mine Area), a solid cement plug must be set across the salt section. Fluid used to mix the cement shall be saturated with the salts that are common to the section penetrated and in suitable proportions, not more than 3% calcium chloride (by weight of cement) will be considered the desired mixture whenever possible, **WOC 4 hours and tag, this plug will be 50' below the bottom and 50' above the top of the Formation.**
19. **If cement does not exist behind casing strings at recommended formation depths**, the casing can be cut and pulled with plugs set at recommended depths. If casing is not pulled, perforations will be shot and cement squeezed behind casing, WOC and tagged. These plugs will be set 50' below formation bottom to 50' above formation top inside the casing

#### **DRY HOLE MARKER REQUIREMENTS**

The operator shall mark the exact location of the plugged and abandoned well with a steel marker not less than four inches in diameter, 3' below ground level with a plate of at least ¼" welded to the top of the casing and the dry hole marker welded on the plate with the following information welded on the dry hole marker:

**1. Operator name   2. Lease and Well Number   3.API Number   4. Unit Letter   5. Quarter Section (feet from the North, South, East or West)   6. Section, Township and Range   7. Plugging Date   8. County**

#### **(SPECIAL CASES)**

##### **AGRICULTURE OR PRARIE CHICKEN BREEDING AREAS**

In these areas, a below ground marker is required with all pertinent information mentioned above on a plate, set 3' below ground level, a picture of the plate will be supplied to NMOCD for record, the exact location of the marker (longitude and latitude by GPS) will be provided to NMOCD (We typically require a current survey to verify the GPS)