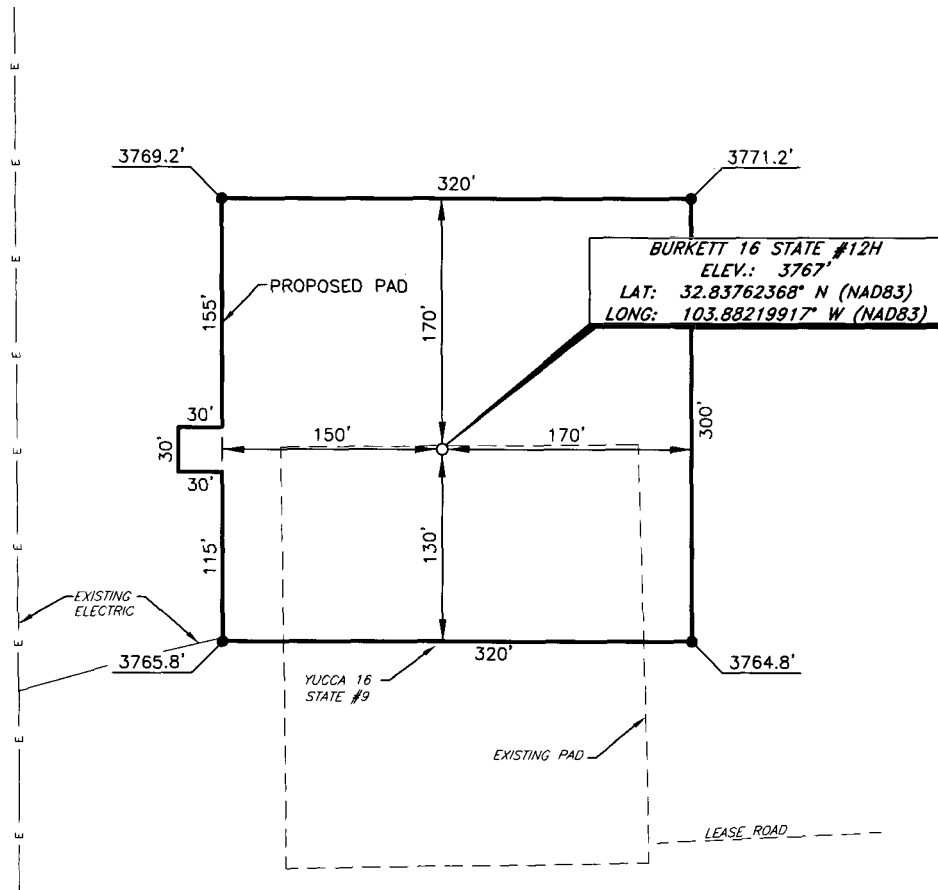




COG OPERATING, LLC  
BURKETT 16 STATE #12H  
(1520' FNL & 330' FWL)  
SECTION 16, T17S, R31E  
N. M. P. M., EDDY CO., NEW MEXICO



DIRECTIONS TO LOCATION

From the intersection of US Hwy 82 and CR-223 (Sweet Gum Rd.)  
Go Northwest on CR-223 approx. 1.4 miles to a lease road on the left;  
Turn left and go West approx. 0.1 miles to a lease road on the right;  
Turn right and go Northwest approx. 0.3 miles to a lease road on the right;  
Turn right and go North approx. 0.1 miles to a lease road on the left;  
Turn left and go West approx. 0.1 miles to the Yucca State #9;  
Location is approx. 103 feet North of existing well location.

I, R. M. Howett, a N. M. Professional Surveyor, hereby certify that I prepared this unclassified survey of a well location from an actual survey made on the ground under my direct supervision, said survey and plat meet the Min. Stds. for Land Surveying in the State of N. M. and are true and correct to the best of my knowledge and belief.

*Robert M. Howett*  
Robert M. Howett NM PS 19680



SCALE: 1" = 100'  
0 50 100  
BEARINGS ARE  
NAD 83 GRID - NM EAST  
DISTANCES ARE  
GROUND.

Firm No.: TX 10193838 NM 4655451

Copyright 2016 - All Rights Reserved

NO.	REVISION	DATE
JOB NO.:	LS140488D2	
DWG. NO.:	140488DPAD	

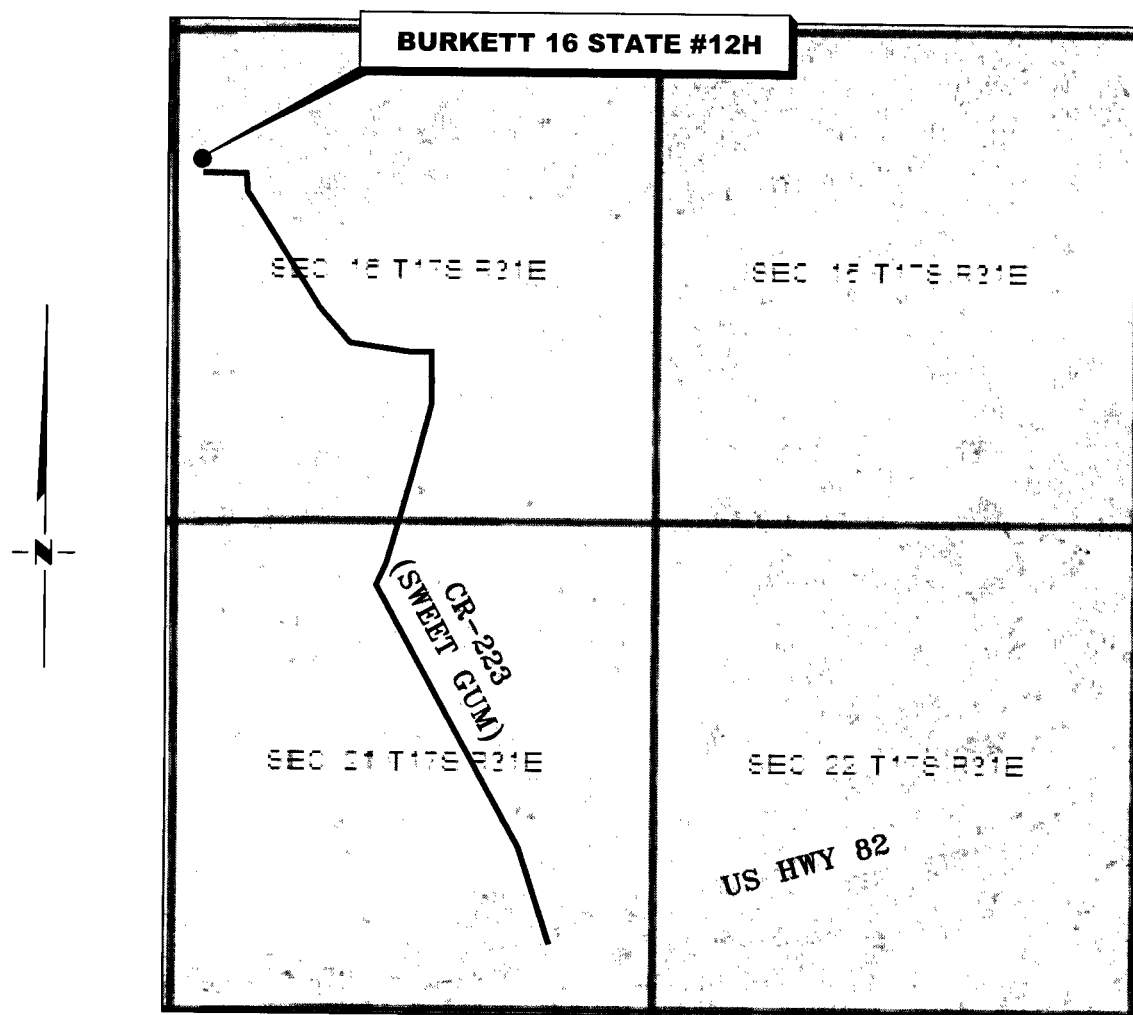
**RRC**

308 W. BROADWAY ST., HOBBS, NM 88240 (575) 964-8200

SCALE: 1" = 100'
DATE: 2-24-2015
SURVEYED BY: GB/BC
DRAWN BY: LPS
APPROVED BY: RMH
SHEET: 1 OF 1

# VICINITY MAP

NOT TO SCALE



*SECTION 16, TWP. 17 SOUTH, RGE. 31 EAST,  
N. M. P. M., EDDY CO., NEW MEXICO*

OPERATOR: COG Operating, LLC  
 LEASE: Burkett 16 State  
 WELL NO.: 12H

LOCATION: 1520' FNL & 330' FWL  
 ELEVATION: 3767'

Firm No.: TX 10193838 NM 4655451

Copyright 2016 - All Rights Reserved

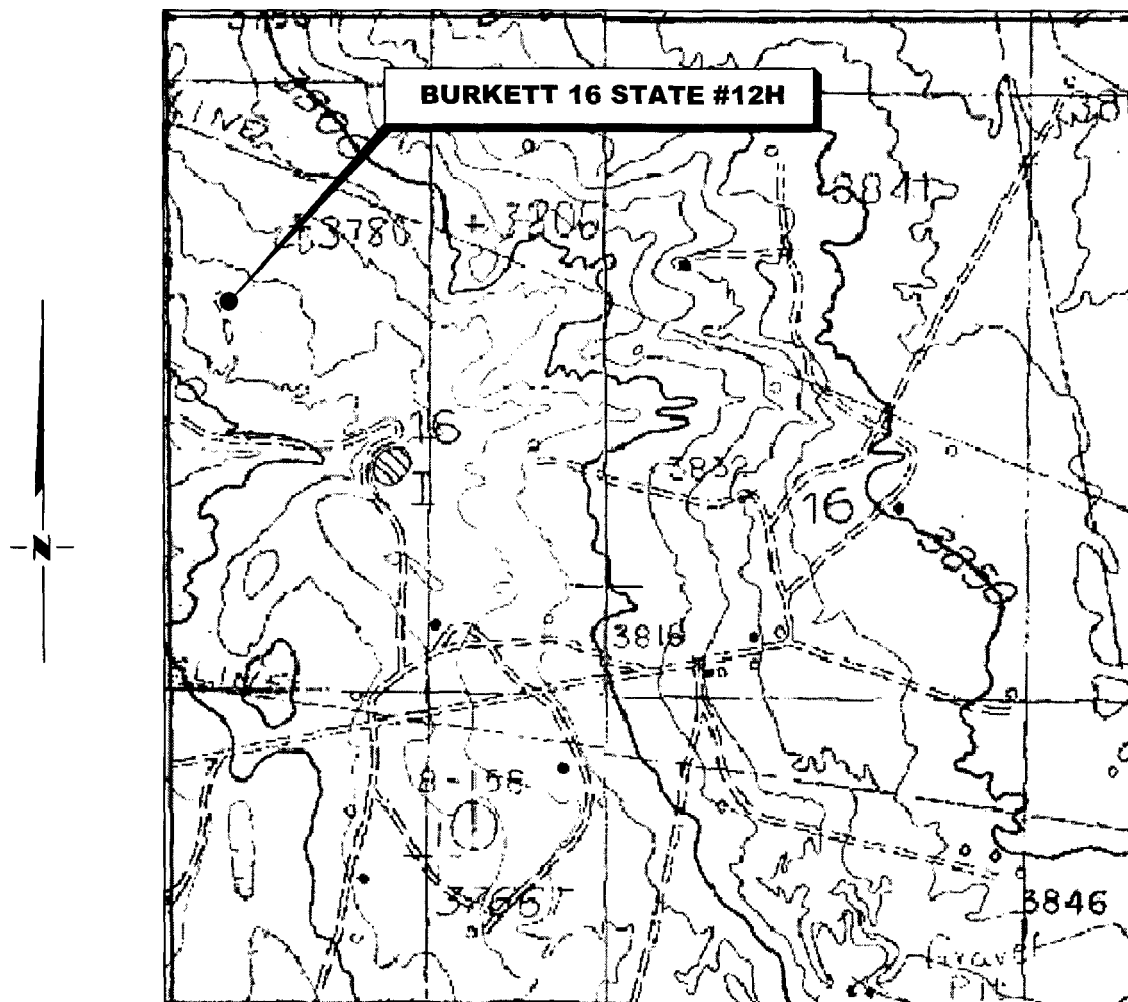
NO.	REVISION	DATE
JOB NO.: LS140488D2		
DWG. NO.: 140488DLVM		

# RRC

308 W. BROADWAY ST., HOBBS, NM 88240 (575) 964-8200

SCALE: 1" = 1000'
DATE: 2-24-2015
SURVEYED BY: GB/BC
DRAWN BY: LPS
APPROVED BY: RMH
SHEET: 1 OF 1

# LOCATION VERIFICATION MAP



*SECTION 16, TWP. 17 SOUTH, RGE. 31 EAST,  
N. M. P. M., EDDY CO., NEW MEXICO*

OPERATOR: COG Operating, LLC  
LEASE: Burkett 16 State  
WELL NO.: 12H  
ELEVATION: 3767'

LOCATION: 1520' FNL & 330' FWL  
CONTOUR INTERVAL:  
USGS TOPO. SOURCE MAP:  
Loco Hills, NM (P.E. 1985)

Firm No.: TX 10193838 NM 4655451

Copyright 2016 - All Rights Reserved

NO.	REVISION	DATE
JOB NO.:	LS140488D2	
DWG. NO.:	140488DLVM	

# RRC

308 W. BROADWAY ST., HOBBS, NM 88240 (575) 964-8200

SCALE: 1" = 1000'
DATE: 2-24-2015
SURVEYED BY: GB/BC
DRAWN BY: LPS
APPROVED BY: RMH
SHEET: 1 OF 1