

District I  
1625 N. French Dr., Hobbs, NM 88240  
Phone: (575) 393-6161 Fax: (575) 393-0720  
District II  
811 S. First St., Artesia, NM 88210  
Phone: (575) 748-1283 Fax: (575) 748-9720  
District III  
1000 Rio Brazos Road, Aztec, NM 87410  
Phone: (505) 334-6178 Fax: (505) 334-6170  
District IV  
1220 S. St. Francis Dr., Santa Fe, NM 87505  
Phone: (505) 476-3460 Fax: (505) 476-3462

**NM OIL CONSERVATION**  
**ARTESIA DISTRICT**  
State of New Mexico  
Energy, Minerals & Natural Resources Department  
**OIL CONSERVATION DIVISION**  
1220 South St. Francis Dr.  
Santa Fe, NM 87505

Form C-102  
Revised August 1, 2011  
Submit one copy to appropriate  
District Office

☐ AMENDED REPORT

**WELL LOCATION AND ACREAGE DEDICATION PLAT**

1 API Number <b>30-015-43155</b>	2 Pool Code <b>98220</b>	3 Pool Name <b>Purple Sage; Wolfcamp (Gas)</b>
4 Property Code <b>314871</b>	5 Property Name <b>BOSTON 7 W2MP FEE</b>	
7 OGRID NO. <b>14744</b>	8 Operator Name <b>MEWBOURNE OIL COMPANY</b>	
		6 Well Number <b>1H</b>
		9 Elevation <b>3089'</b>

**10 Surface Location**

UL or lot no.	Section	Township	Range	Lot Idn	Feet from the	North/South line	Feet From the	East/West line	County
<b>4</b>	<b>7</b>	<b>24S</b>	<b>28E</b>		<b>330</b>	<b>SOUTH</b>	<b>185</b>	<b>WEST</b>	<b>EDDY</b>

**11 Bottom Hole Location If Different From Surface**

UL or lot no.	Section	Township	Range	Lot Idn	Feet from the	North/South line	Feet from the	East/West line	County
<b>P</b>	<b>7</b>	<b>24S</b>	<b>28E</b>		<b>445</b>	<b>South</b>	<b>340</b>	<b>East</b>	<b>Eddy</b>

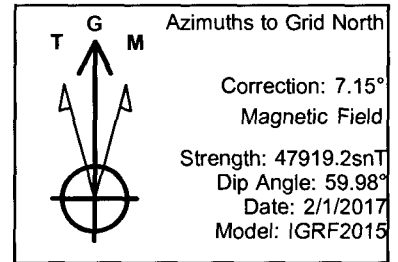
12 Dedicated Acres <b>319.25</b>	13 Joint or Infill	14 Consolidation Code	15 Order No.
-------------------------------------	--------------------	-----------------------	--------------

No allowable will be assigned to this completion until all interest have been consolidated or a non-standard unit has been approved by the division.

<p>16 (B)</p> <p style="text-align: center;">N 89°35'04" E 5311.25'</p> <p style="text-align: center;">LOT 1</p> <p style="text-align: center;">GEODETIC DATA NAD 27 GRID - NM EAST</p> <p style="text-align: center;">SURFACE LOCATION N 445917.7 - E 561513.2</p> <p style="text-align: center;">LAT: 32.22578830° N LONG: 104.13441139° W</p> <p style="text-align: center;">LOT 2</p> <p style="text-align: center;">7</p> <p style="text-align: center;">LOT 3</p> <p style="text-align: center;">CORNER DATA NAD 27 GRID - NM EAST</p> <p style="text-align: center;">A: FOUND BRASS CAP "1942" N 445586.7 - E 561329.0</p> <p style="text-align: center;">B: FOUND BRASS CAP "1942" N 450901.4 - E 561318.4</p> <p style="text-align: center;">C: FOUND ALUM CAP "ILLEGIBLE" N 450939.9 - E 566628.3</p> <p style="text-align: center;">D: CALCULATED CORNER N 445618.4 - E 566654.1</p> <p style="text-align: center;">LOT 4</p> <p style="text-align: center;">S 89°39'32" W 5326.41'</p> <p style="text-align: center;">185' S. L.</p> <p style="text-align: center;">330'</p>	<p>17 OPERATOR CERTIFICATION</p> <p>I hereby certify that the information contained herein is true and complete to the best of my knowledge and belief, and that this organization either owns a working interest or unleased mineral interest in the land including the proposed bottom hole location or has a right to drill this well at this location pursuant to a contract with an owner of such a mineral or working interest, or to a voluntary pooling agreement or a compulsory pooling order heretofore entered by the division.</p> <p>Signature: <u>Jackie Lathan</u> Date: <u>5/30/15</u></p> <p>Printed Name: <u>Jackie Lathan</u></p> <p>E-mail Address: _____</p> <p>18 SURVEYOR CERTIFICATION</p> <p>I hereby certify that the well location shown on this plat was plotted from field notes of actual surveys made by me or under my supervision, and that the same is true and correct to the best of my belief.</p> <p style="text-align: center;"><b>5-27-2015</b></p> <p>Date of Survey</p> <p>Signature and Seal of Professional Surveyor: <u>Robert M. Howett</u></p> <p style="text-align: center;"><b>19680</b></p> <p>Certificate Number</p>
--	--

Company Name: Newbourn Oil Company  
 Boston 7 W2MP FEE 1H  
 Eddy County, New Mexico  
 Rig: Patterson #243  
 Created By: Shane Robbins  
 Date: 02/23/2017

Boston 7 W2MP FEE 1H  
 Eddy County, New Mexico  
 Q170163 & WT-170135  
 Design #2



PROJECT DETAILS: Eddy County, New Mexico

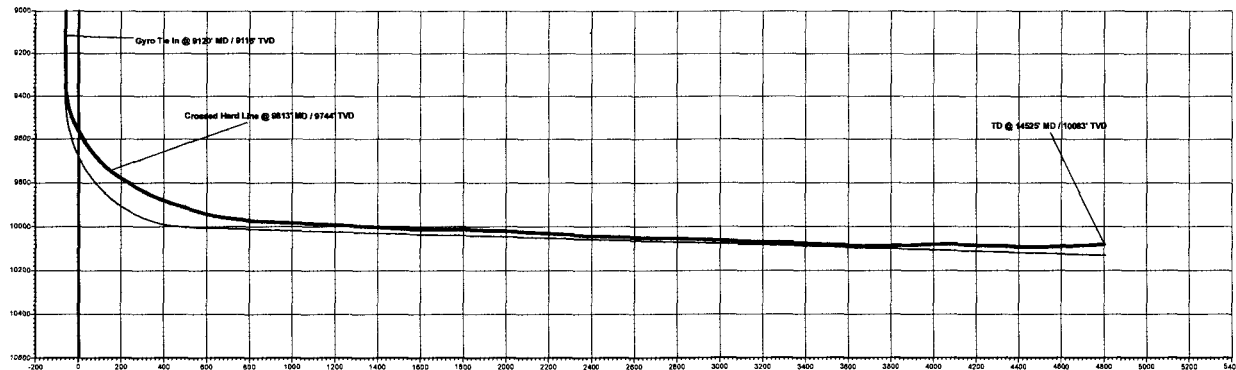
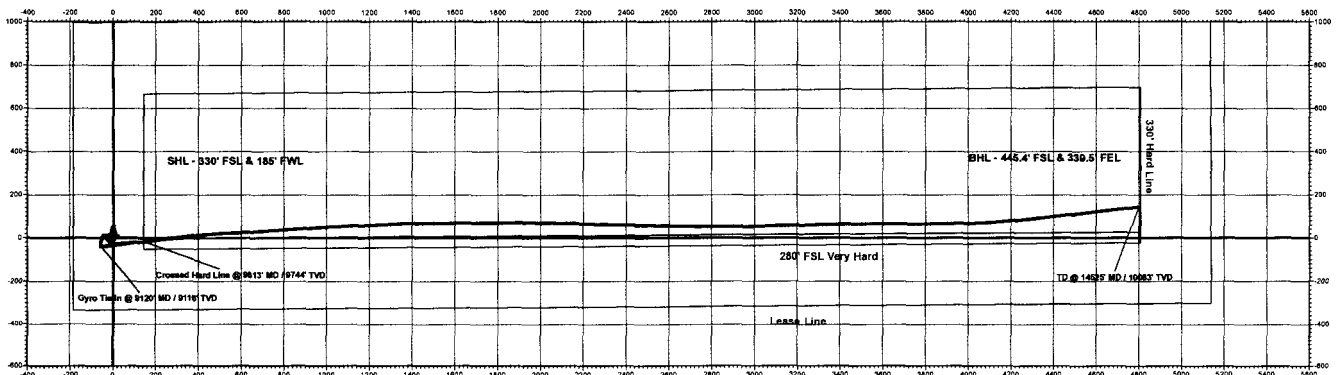
Geodetic System: US State Plane 1927 (Exact solution)  
 Datum: NAD 1927 (NADCON CONUS)  
 Ellipsoid: Clarke 1866  
 Zone: New Mexico East 3001  
 System Datum: Mean Sea Level

WELL DETAILS: Boston 7 W2MP FEE 1H

		Ground Level: 3088.0			
+N-S	+E-W	North	East	Latitude	Longitude
0.0	0.0	445917.70	961513.20	32° 12' 32.858" N	104° 8' 3.881" W

ANNOTATIONS

MD	Inc	Azi	TVD	+N-S	+E-W	V Sect	Departure	Annotation
9120.0	1.12	189.16	9115.8	-36.1	-58.8	-59.0	245.5	Gyro Tie In @ 9120' MD / 9116' TVD
9813.2	52.79	83.68	9744.3	-16.8	145.9	145.8	458.0	Crossed Hard Line @ 9813' MD / 9744' TVD
14525.0	92.00	83.10	10092.7	144.1	4799.2	4800.0	5119.9	TD @ 14525' MD / 10093' TVD



Vertical Section at 89.66° (200 usf/in)