

# NM OIL CONSERVATION

ARTESIA DISTRICT

## DISTRICT I

1625 N. French Dr., Hobbs, NM 88240  
Phone: (575) 393-6161 Fax: (575) 393-0720

## DISTRICT II

811 S. First St., Artesia, NM 88210

Phone: (575) 748-1283 Fax: (505) 334-6178

## DISTRICT III

1000 Rio Brazos Road, Aztec, NM 87410

Phone: (505) 334-6178 Fax: (505) 334-6170

## DISTRICT IV

1220 S. St. Francis Dr., Santa Fe, NM 87505

Phone: (505) 476-3460 Fax: (505) 476-3462

State of New Mexico  
Energy, Minerals & Natural Resources Department

## OIL CONSERVATION DIVISION

1220 South St. Francis Dr.  
Santa Fe, New Mexico 87505

Form C-102

Revised August 1, 2011

Submit one copy to appropriate  
District Office

□ AMENDED REPORT

## WELL LOCATION AND ACREAGE DEDICATION PLAT

API Number 30-015- <b>44274</b>	Pool Code <b>97917</b>	Pool Name Dodd; Glorieta-Upper Yeso ✓
Property Code 308195	Property Name <b>DODD FEDERAL UNIT</b>	Well Number <b>908H</b>
OGRID No. 229137	Operator Name <b>COG OPERATING, LLC</b>	Elevation <b>3626'</b>

### Surface Location

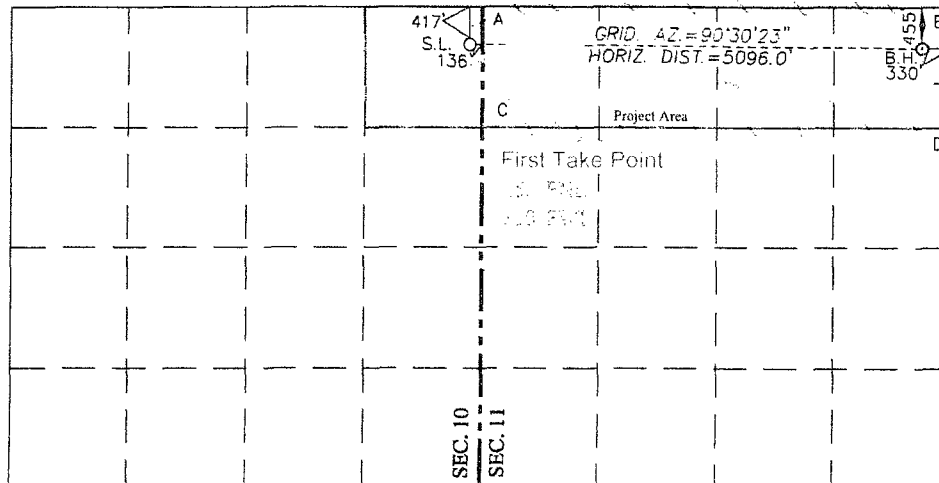
UL or lot No.	Section	Township	Range	Lot Idn	Feet from the	North/South line	Feet from the	East/West line	County
<b>A</b>	<b>10</b>	<b>17-S</b>	<b>29-E</b>		<b>417</b>	<b>NORTH</b>	<b>136</b>	<b>EAST</b>	<b>EDDY</b>

### Bottom Hole Location If Different From Surface

UL or lot No.	Section	Township	Range	Lot Idn	Feet from the	North/South line	Feet from the	East/West line	County
<b>A</b>	<b>11</b>	<b>17-S</b>	<b>29-E</b>		<b>455</b>	<b>NORTH</b>	<b>330</b>	<b>EAST</b>	<b>EDDY</b>

Dedicated Acres	Joint or Infill	Consolidation Code	Order No.
<b>160</b>			

NO ALLOWABLE WILL BE ASSIGNED TO THIS COMPLETION UNTIL ALL INTERESTS HAVE BEEN CONSOLIDATED OR A NON-STANDARD UNIT HAS BEEN APPROVED BY THE DIVISION



### OPERATOR CERTIFICATION

I hereby certify that the information herein is true and complete to the best of my knowledge and belief, and that this organization either owns a working interest or unleased mineral interest in the land including the proposed bottom hole location or has a right to drill this well at this location pursuant to a contract with an owner of such mineral or working interest, or to a voluntary pooling agreement or a compulsory pooling order heretofore entered by the division.

Signature: \_\_\_\_\_ Date: **02/15/2017**

Printed Name: **Robyn M. Russell**

E-mail Address: **Russell@concho.com**

### SURVEYOR CERTIFICATION

I hereby certify that the well location shown on this plat was plotted from field notes of actual surveys made by me or under my supervision, and that the same is true and correct to the best of my belief.

**JANUARY 13, 2012**

Date of Survey: **3239**  
Signature & Seal of Professional Surveyor: \_\_\_\_\_

Certificate Number: **Gary G. Eidson 12641**  
**Ronald J. Eidson 3239**

ACK Rel WO#12.13.1398 JWSC W.O.: 17.13.0096

GEODETIC COORDINATES  
NAD 27 NME  
SURFACE LOCATION  
Y=674912.6 N  
X=585777.6 E  
LAT.=32.855107° N  
LONG.=104.054004° W

### CORNER COORDINATES TABLE

NAD 27 NME  
A - Y=675329.9 N, X=585912.5 E  
B - Y=675322.3 N, X=591200.5 E  
C - Y=674009.3 N, X=585916.2 E  
D - Y=674002.2 N, X=591205.2 E

GEODETIC COORDINATES  
NAD 27 NME  
BOTTOM HOLE LOCATION  
Y=674867.5 N  
X=590872.2 E  
LAT.=32.854945° N  
LONG.=104.037414° W

GEODETIC COORDINATES  
NAD 83 NME  
SURFACE LOCATION  
Y=674976.1 N  
X=626956.6 E  
LAT.=32.855222° N  
LONG.=104.054513° W

### CORNER COORDINATES TABLE

NAD 83 NME  
A - Y=675393.4 N, X=627091.5 E  
B - Y=675385.9 N, X=632379.5 E  
C - Y=674072.8 N, X=627095.2 E  
D - Y=674065.8 N, X=632384.2 E

GEODETIC COORDINATES  
NAD 83 NME  
BOTTOM HOLE LOCATION  
Y=674931.1 N  
X=632051.2 E  
LAT.=32.855060° N  
LONG.=104.037924° W